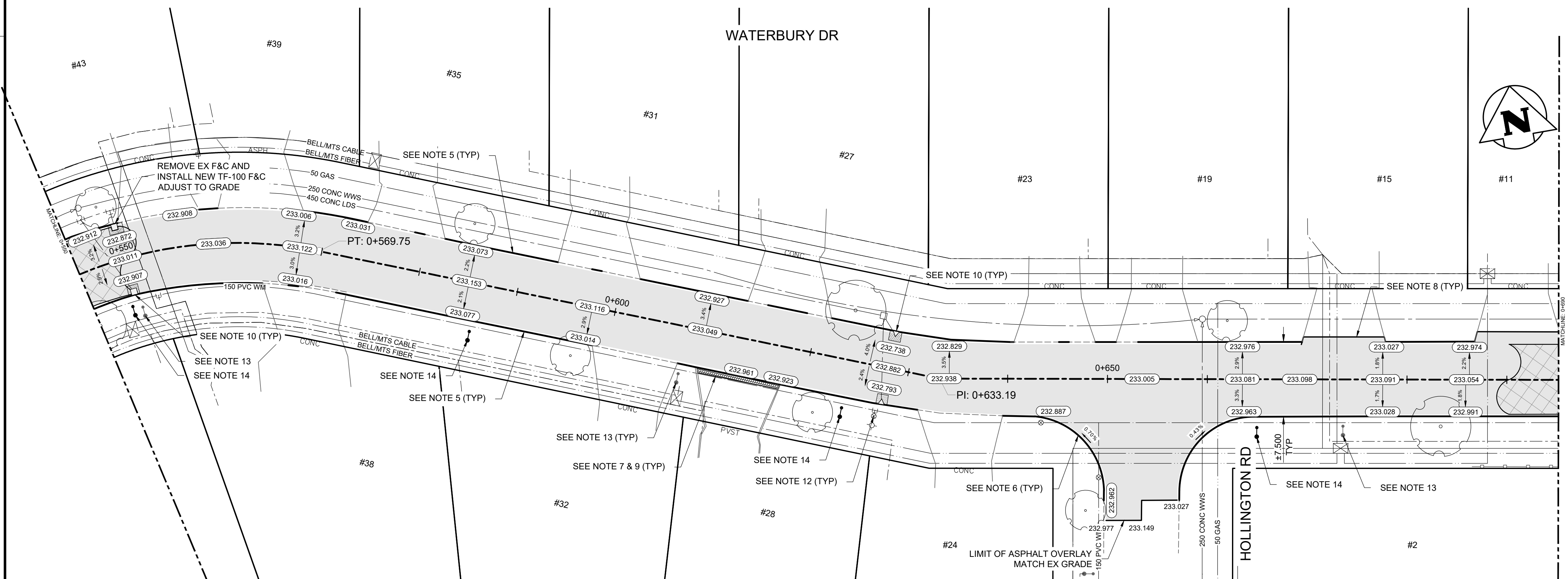


CONSTRUCTION NOTES:

1. ALL WORK AND MATERIALS TO BE IN ACCORDANCE WITH LATEST REVISION OF THE CITY OF WINNIPEG STANDARD CONSTRUCTION SPECIFICATIONS.
2. LEGAL PLAN AND UNDERGROUND INFORMATION FROM CITY OF WINNIPEG LBIS.
3. LOCATION OF EXISTING UTILITIES/SERVICES TO BE CONFIRMED IN THE FIELD BY THE CONTRACTOR.
4. CONTRACTOR TO TAKE PRECAUTIONARY STEPS TO AVOID DAMAGE FROM CONSTRUCTION ACTIVITIES TO TREES WITHIN THE LIMITS OF CONSTRUCTION. REFER TO SPECIFICATION E5-PROTECTION OF EXISTING TREES.
5. MILL EXIST MOUNTABLE CURB AND CONSTRUCT BARRIER CURB DOWELED SD-205 (100 mm REVEAL).
6. REMOVE EXISTING CURB AND CONSTRUCT MODIFIED BARRIER CURB SD-203B (100 mm REVEAL).
7. CONSTRUCT 75 mm LIP CURB SD-202B.
8. OVERLAY EXISTING CURB AND APPROACH WITH ASPHALT TO LIMITS SHOWN.
9. REGRADE EXISTING PAVING STONES.
10. REMOVE MOUNTABLE CURB AND GUTTER FRAME AND COVER AP-015, AP-016, AND INSTALL BARRIER CURB FRAME AND COVER AP-011, AP-012. ADJUST TO GRADE. COMPLETE CATCH BASIN/CATCH PIT CURB ISOLATIONS IN ACCORDANCE WITH SD-220E.
11. ADJUST MANHOLE AND CATCH BASIN RIMS TO NEW GRADES.
12. ADJUST WATER VALVES AND CURB STOPS TO NEW GRADES.
13. REMOVE EXISTING STREET LIGHT POLE AND BASE.
14. INSTALL NEW STREET LIGHT BASE AND POLE.
15. CB AND CP LEADS TO BE INSTALLED TO INVERT ELEVATIONS AS SHOWN. ALL CB AND CP LEADS TO BE INSTALLED AT MIN 2.0% SLOPE AND AS DIRECTED BY CONTRACT ADMINISTRATOR.
16. LIMITS OF BOULEVARD GRADING TO BE FINALIZED IN THE FIELD BY THE CONTRACT ADMINISTRATOR.
17. LAMP STANDARDS, HYDRO POLES AND ANCHORS THAT REQUIRE TEMPORARY SUPPORT, REMOVAL OR REPLACEMENT, TO BE DONE AT THE EXPENSE OF THE CONTRACTOR, AS NECESSARY. REFER TO SPECIFICATION E30-WORKING AROUND MANITOBA HYDRO POLES.
18. ALL DIMENSIONS ARE TO BACK OF CURB.



METRIC

WHOLE NUMBERS INDICATE MILLIMETRES
DECIMAL NUMBERS INDICATE METRES

WARNING

IF POWER EQUIPMENT OR EXPLOSIVES ARE TO BE USED FOR EXCAVATION ON THIS PROJECT THE CONTRACTOR MUST:

1. NOTIFY THE GAS COMPANY OF THE PROPOSED LOCATION OF EXCAVATION.
2. TAKE PRECAUTION TO AVOID DAMAGE TO GAS COMPANY INSTALLATIONS SEE PROVINCIAL REGULATION 210/72 FOR DETAILS.
3. OBTAIN EXCAVATION PERMITS PRIOR TO CONSTRUCTION.



EXISTING	LEGEND-PLAN	PROPOSED	EXISTING	LEGEND-PLAN	PROPOSED	EXISTING	LEGEND-PROFILE	PROPOSED
	HYDRANT			CONCRETE			WATERMAIN	
	VALVE			ASPHALT			LAND DRAINAGE SEWER	
	MANHOLE			SIDEWALK			WASTE WATER SEWER	
	CATCH BASIN			PAVING STONES			HYDRANT	
	CATCH PIT			PARTIAL DEPTH REPAIR			VALVE	
	WATERMAIN			PROPERTY LINE			NORTH/WEST GUTTER	
	300 LBS LAND DRAINAGE SEWER			ELEVATION			SOUTH/EAST GUTTER	
	250 WWS WASTE WATER SEWER			CURB RAMP			NORTH/WEST DITCH	
	HYDRO			DETECTABLE TILE			SOUTH/EAST DITCH	
	M.T.S.							
	100 GAS							

UNDERGROUND STRUCTURES

LOCATION OF UNDERGROUND STRUCTURES AS SHOWN ARE BASED ON THE BEST INFORMATION AVAILABLE. BUT NO GUARANTEE IS GIVEN THAT ALL EXISTING UTILITIES ARE SHOWN OR THAT THE GIVEN LOCATIONS ARE EXACT. CONFIRMATION OF EXISTENCE AND EXACT LOCATION OF ALL SERVICES MUST BE OBTAINED FROM THE INDIVIDUAL UTILITIES BEFORE PROCEEDING WITH CONSTRUCTION.



DESIGNED BY	KHL	REVIEWED BY	JT/DL/JNC
DRAWN BY	KHL	APPROVED BY	JNC
SCALE:	H = 1:250 V = 1:10	RELEASED FOR CONSTRUCTION	xx
		STREETS PROJECT ENGINEER	
		DATE	26.03.17

CONSULTANT DRAWING NO.
704-INF-MB103048-01-C021



THE CITY OF WINNIPEG
PUBLIC WORKS DEPARTMENT

2026 LOCAL STREET RENEWAL PROGRAM
26-R-03

CITY DRAWING NUMBER
P-3599-21
SHEET OF
21 25

MAJOR REHABILITATION
WATERBURY DRIVE (STA 0+550 TO STA 0+690)
PLAN AND PROFILE

C021