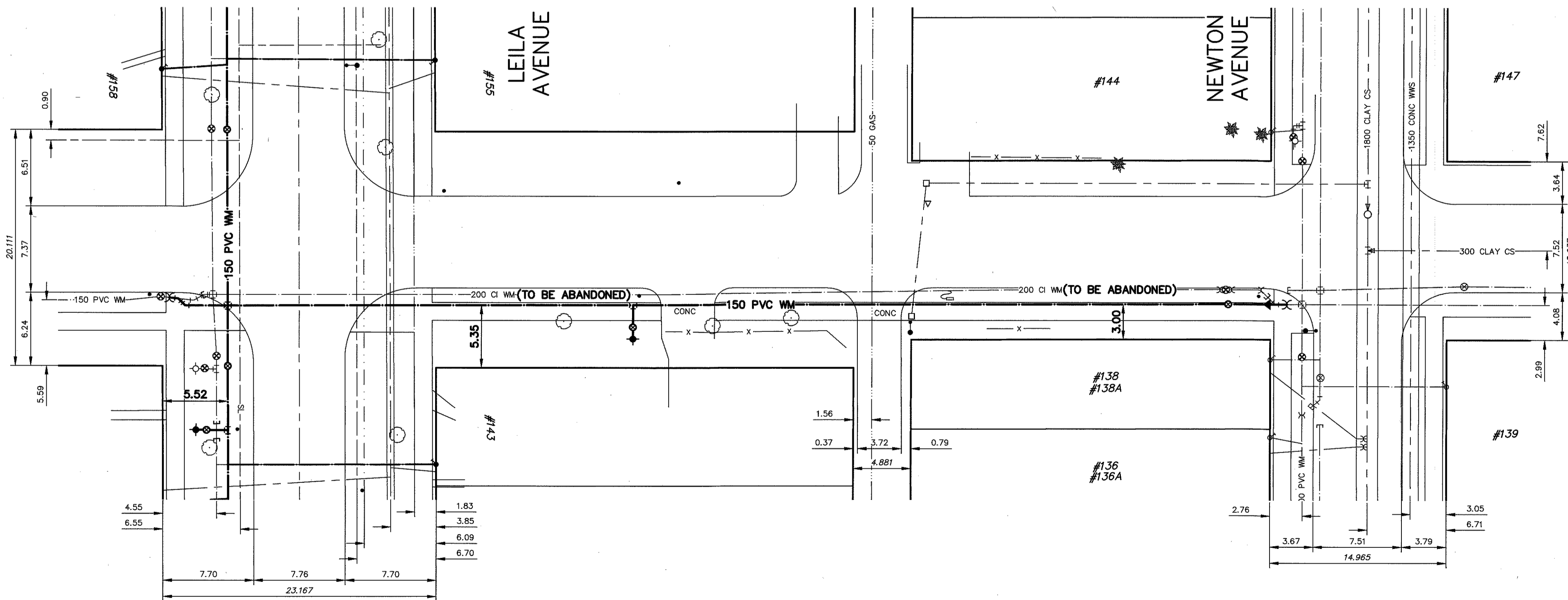


NOTE: CHAINAGES SHOWN ALONG E R OF MARYMOUND WAY

FOR CONTINUATION
SEE DWG C10

MARYMOUND WAY

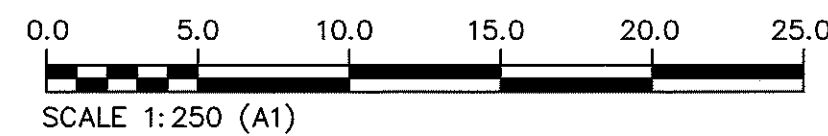


FOR CONTINUATION
SEE DWG C10

**ENGINEERS
GEOSCIENTISTS
MANITOBA**
Certificate of Authorization
KGS Group
No. 245

METRIC
WHOLE NUMBERS INDICATE MILLIMETRES
DECIMALIZED NUMBERS INDICATE METRES

FOR INDEX PAGE
SEE D-17449



WARNING
IF POWER EQUIPMENT OR EXPLOSIVES ARE TO BE USED FOR EXCAVATION ON THIS PROJECT THE CONTRACTOR MUST:
1) NOTIFY THE GAS COMPANY OF THE PROPOSED LOCATION OF EXCAVATION.
2) TAKE PRECAUTION TO AVOID DAMAGE TO GAS COMPANY INSTALLATIONS.
SEE PROVINCIAL REGULATION 210/72 FOR DETAILS

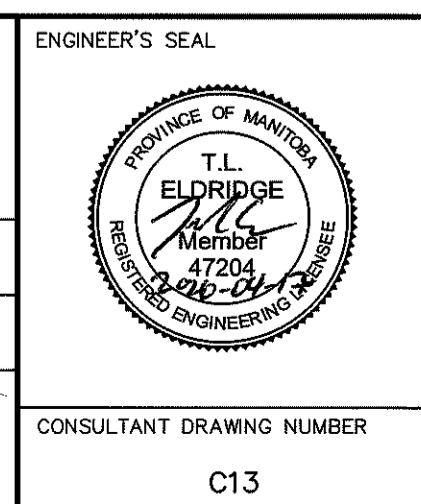
**LOCATION APPROVED
UNDERGROUND STRUCTURES**
SUPV. U/G STRUCTURES COMMITTEE DATE
NOTE:
LOCATION OF UNDERGROUND STRUCTURES AS SHOWN ARE BASED ON THE BEST INFORMATION AVAILABLE BUT NO GUARANTEE IS GIVEN THAT ALL EXISTING UTILITIES ARE SHOWN OR THAT THE GIVEN LOCATIONS ARE EXACT. CONFIRMATION OF EXISTENCE AND EXACT LOCATION OF ALL SERVICES MUST BE OBTAINED FROM THE INDIVIDUAL UTILITIES BEFORE PROCEEDING WITH CONSTRUCTION.

| | |
|--|------------|
| VERTICAL DATUM: CGVD28 (HT2.0 Geoid) | |
| HORIZONTAL DATUM: NAD83 (June 1990), Zone 14 | |
| DESIGNED BY | JOM |
| CHECKED BY | SLF |
| DRAWN BY | GEL |
| APPROVED BY | TLE |
| SCALE: | |
| HORIZONTAL | 1:250 |
| VERTICAL | 1:50 |
| ISSUED FOR TENDER | 2026/04/17 |
| DATE | TLE |
| BY | |
| DATE | |
| NO. | |
| REVISIONS | |

KGS GROUP

ENGINEER'S SEAL

DESIGNED BY: JOM
CHECKED BY: SLF
DRAWN BY: GEL
APPROVED BY: TLE
SCALE: HORIZONTAL 1:250, VERTICAL 1:50
RELEASED FOR CONSTRUCTION
CONSULTANT DRAWING NUMBER: C13



THE CITY OF WINNIPEG
WATER AND WASTE DEPARTMENT
ENGINEERING SERVICES DIVISION

2026 WATER MAIN RENEWALS
CONTRACT 7
MARYMOUND WAY
LEILA AVENUE TO
NEWTON AVENUE

SHEET 13 OF 17
CITY DRAWING NUMBER
D-17460