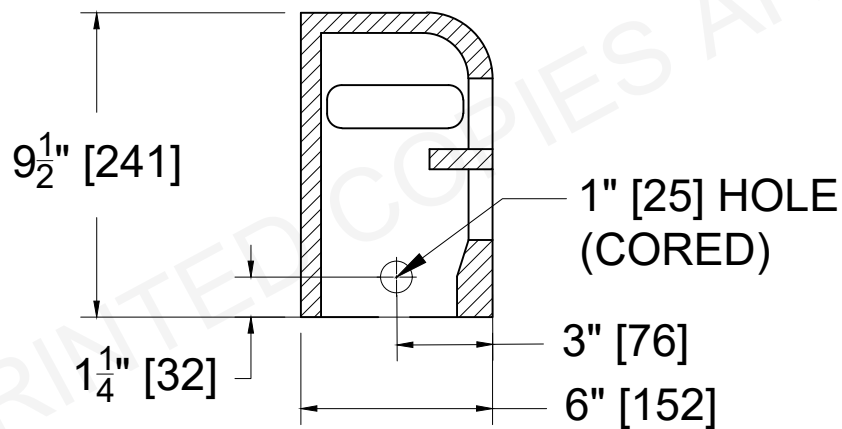
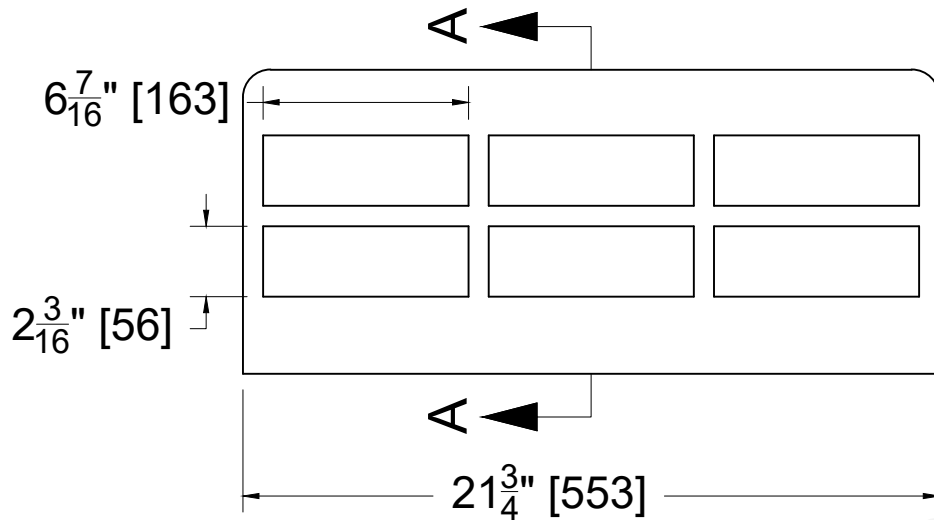


# **APPENDIX 'I'**

## **BARRIER CURB INLET DETAILS**



**SECTION A-A**

TF-103    ASTM A48 CL35B    D&L FOUNDRY    Ⓟ  
MM/DD/YYYY    AASHTO M306



**D&L Foundry, Inc.**  
**"The Iron Men"**  
MADE IN THE USA

THE INFORMATION CONTAINED IN THIS DRAWING IS THE SOLE PROPERTY OF D&L FOUNDRY. ANY REPRODUCTION IN PART OR AS A WHOLE WITHOUT THE WRITTEN PERMISSION OF D&L FOUNDRY IS PROHIBITED

**PART NUMBER**

**TF-103SI**

**DATE**

9/15/20

11/2/21

11/5/21

**DESCRIPTION**

DRAWING OF EXISTING PART

ECR 2276 - CHANGE SLOT IN SIDE TO A HOLE TO MATCH THE PATTERN

ECR 2281 - ADD CENTER MARK AND DIMENSIONS OF SIDE HOLE LOCATION

**DRAWN**

DF

DF

DF

**APPROVED**

D.C.

D.C.

D.C.

GRAY IRON  
CONFORMS TO  
ASTM A48 CL35B

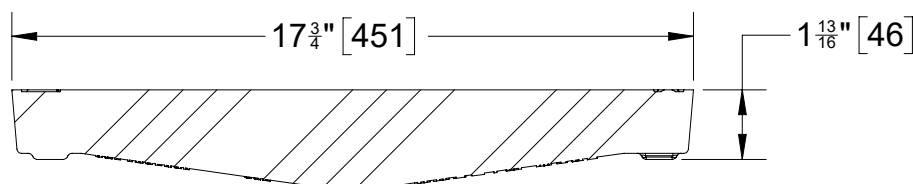
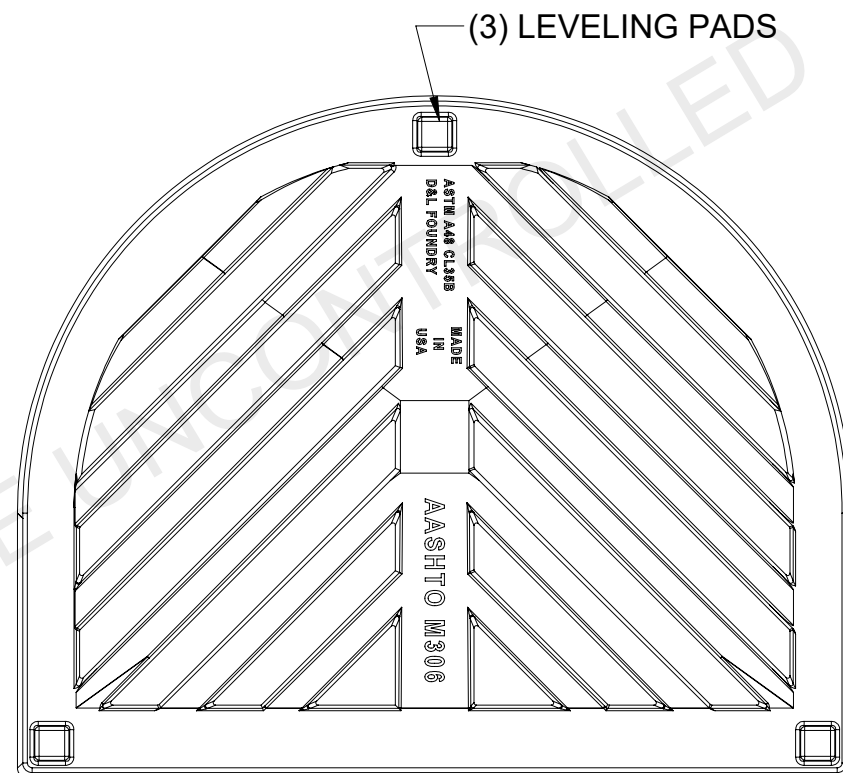
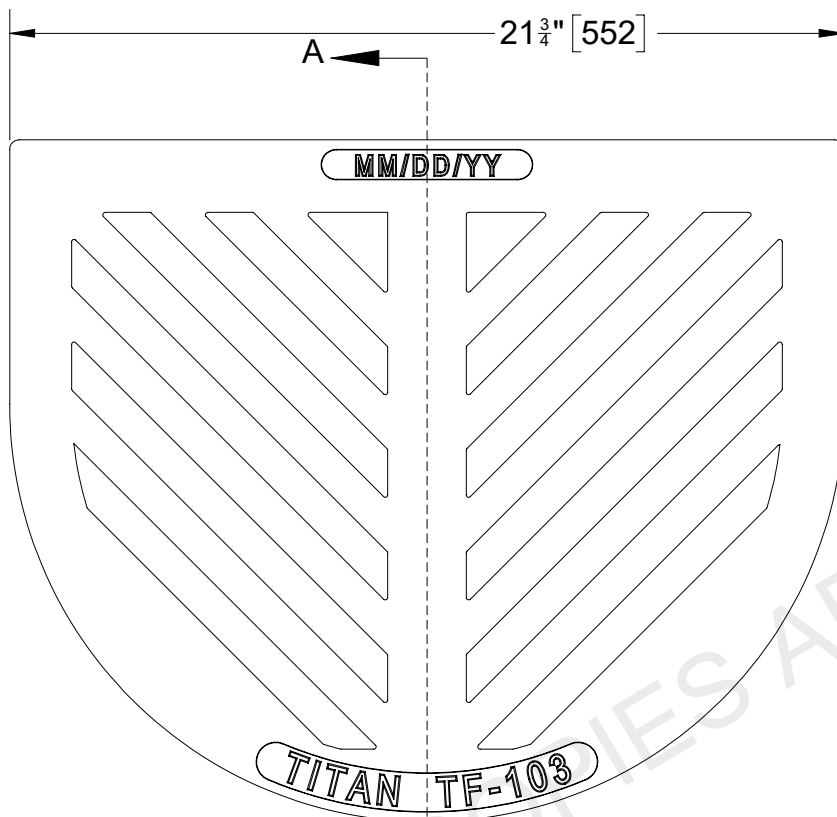
AASHTO M306

**REFERENCE INFORMATION**

**TOOLING NUMBERS**  
**PATTERN LOCATION**  
TOOLS  
COPE: -6237  
DRAG: -6238  
COPE: -6237  
DRAG: -6238  
DESIGNATES MACHINED SURFACE

**TOLERANCES**

ALL TOLERANCES ARE  $\pm \frac{1}{16}$ " PER FOOT, OR 1.6 MM PER 300 MM MEASUREMENTS LESS THAN ONE FOOT ARE  $\pm \frac{1}{16}$ ", OR 1.6 MM UNLESS OTHERWISE SPECIFIED



SECTION A-A



NOTES: 5X1 GRATE BARS



**D&L Foundry, Inc.**  
**"The Iron Men"**  
 MADE IN THE USA  
 THE INFORMATION CONTAINED IN THIS DRAWING IS THE SOLE PROPERTY OF D&L FOUNDRY, ANY REPRODUCTION IN PART OR AS WHOLE WITHOUT THE WRITTEN PERMISSION OF D&L FOUNDRY IS PROHIBITED

**PART NUMBER**  
**TF-103G**  
**MODIFIED**

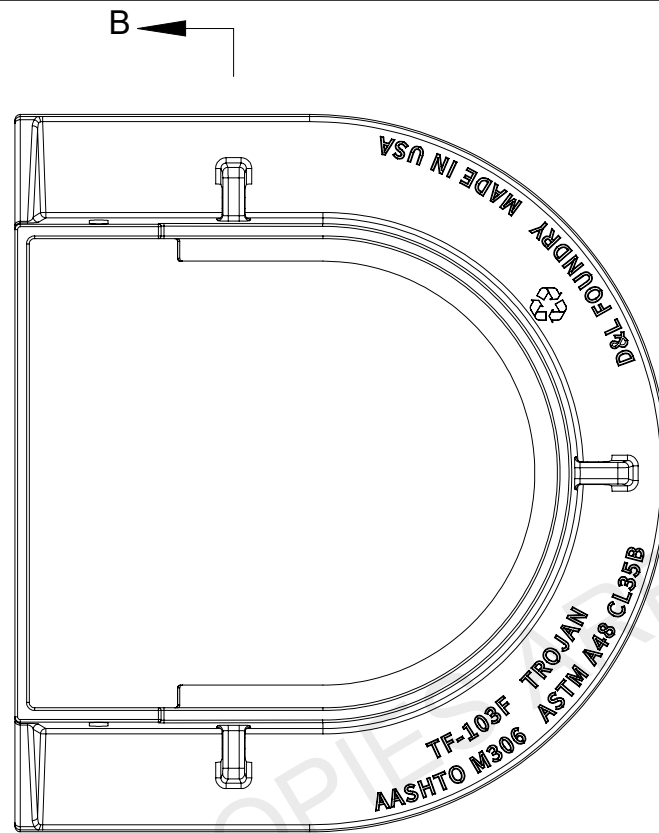
DATE	DESCRIPTION	DRAWN	APPROVED
7/18/24	NEW GRATE DESIGN FOR TF-103 SERIES	D.C.	

GRAY IRON CONFORMS TO  
 ASTM A48 CL35B  
 AASHTO M306  
  
 AASHTO M306

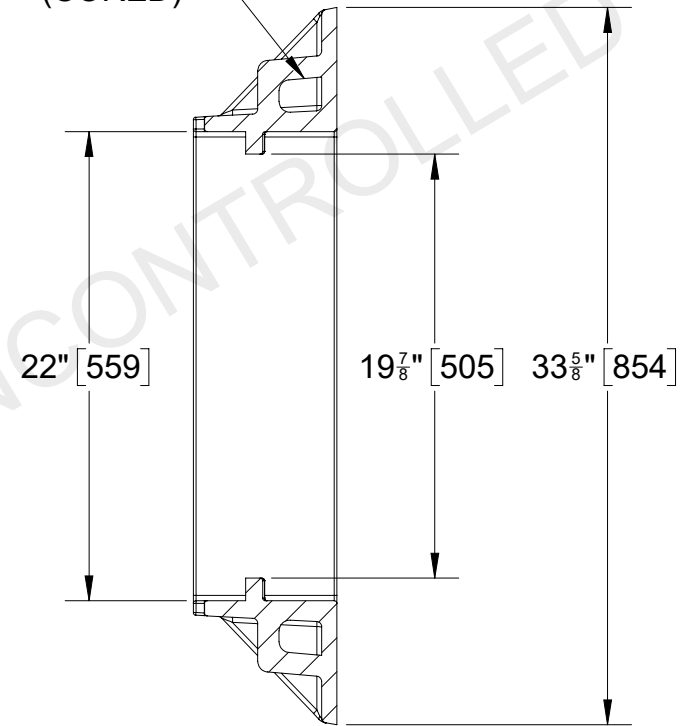
REFERENCE INFORMATION	
TOOLING NUMBERS	
TOOLS	PATTERN
COPE: -NEW	LOCATION
DRAG: -NEW	DRAG: -NEW
DESIGNATES MACHINED SURFACE	

TOLERANCE

ALL TOLERNCES ARE  $\pm \frac{1}{32}"$  PER FOOT,  
 OR 1.6 MM PER 300MM  
 MEASUREMENTS LESS THAN ONE FOOT [300MM]  
 ARE  $\pm \frac{1}{32}"$ , OR 1.6MM  
 UNLESS OTHERWISE SPECIFIED

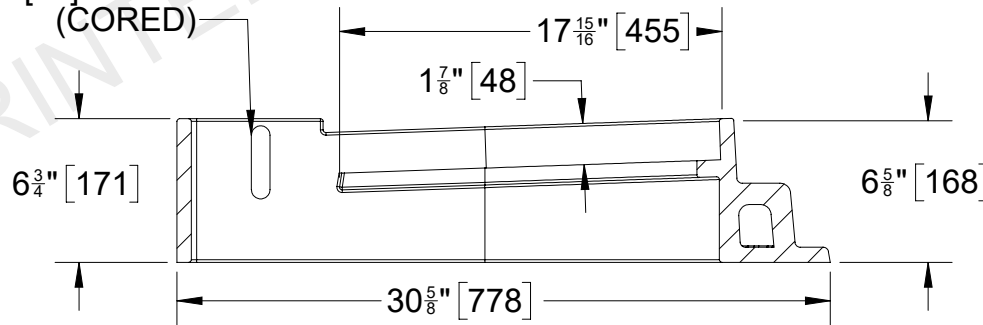


(3) LIFTING EYES  
(CORED)



SECTION B-B

(2) 1" [25] X 3" [76] SLOTS  
(CORED)



SECTION A-A



**D&L Foundry, Inc.**  
**"The Iron Men"**  
MADE IN THE USA

THE INFORMATION CONTAINED IN THIS DRAWING  
IS THE SOLE PROPERTY OF D&L FOUNDRY, ANY  
REPRODUCTION IN PART OR AS WHOLE  
WITHOUT THE WRITTEN PERMISSION OF D&L  
FOUNDRY IS PROHIBITED

PART NUMBER

**TF-103F  
MODIFIED**

DATE

7/18/24

DESCRIPTION

NEW PATTERN FOR TF-103 SERIES

DRAWN

APPROVED

D.C.

GRAY IRON CONFORMS TO  
ASTM A48 CL35B  
AASHTO M306

AASHTO M306

REFERENCE INFORMATION

TOOLING NUMBERS  
PATTERN LOCATION  
TOOLS COPE: -NEW COPE: -NEW  
DRAG: -NEW DRAG: -NEW

DESIGNATES MACHINED SURFACE

TOLERANCE

ALL TOLERNCES ARE  $\pm \frac{1}{32}$  PER FOOT,  
OR 1.6 MM PER 300MM  
MEASUREMENTS LESS THAN ONE FOOT [300MM]  
ARE  $\pm \frac{1}{16}$ , OR 1.6MM  
UNLESS OTHERWISE SPECIFIED