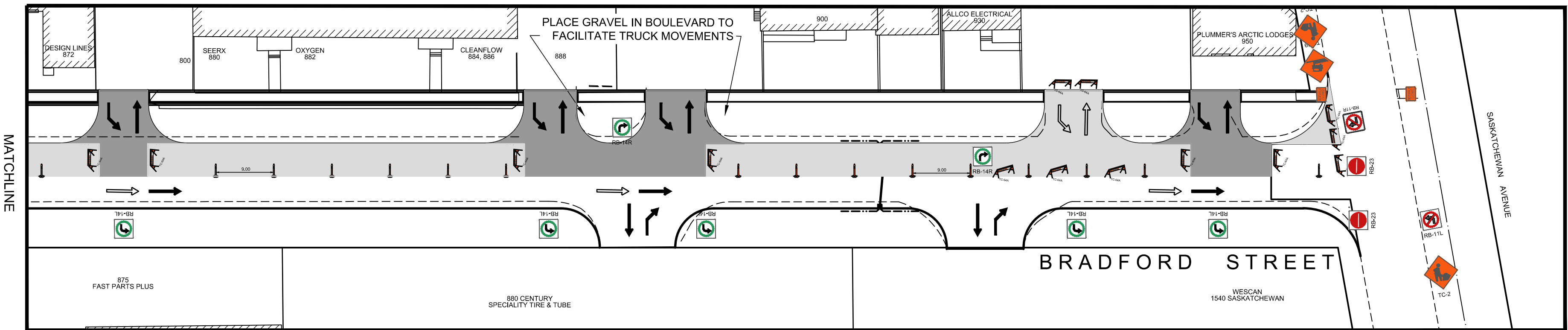


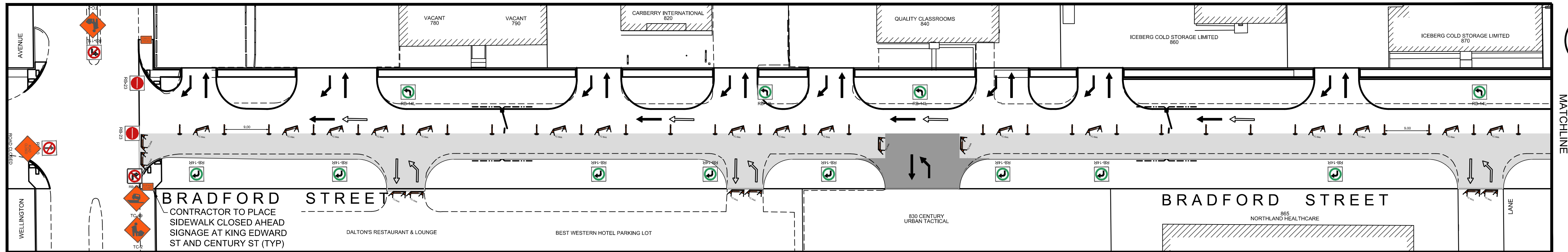
BRADFORD STREET- WELLINGTON AVENUE TO SASKATCHEWAN AVENUE STAGE 1 - PLAN VIEW

Scale 1:500



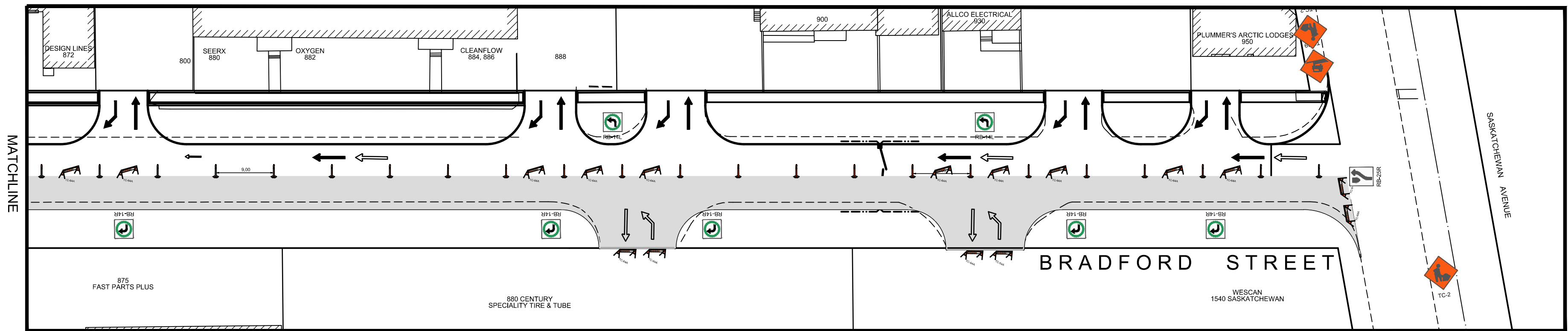
BRADFORD STREET- WELLINGTON AVENUE TO SASKATCHEWAN AVENUE STAGE 1 - PLAN VIEW

Scale 1:500



BRADFORD STREET- WELLINGTON AVENUE TO SASKATCHEWAN AVENUE STAGE 2 - PLAN VIEW

Scale 1:500



BRADFORD STREET- WELLINGTON AVENUE TO SASKATCHEWAN AVENUE STAGE 2 - PLAN VIEW

Scale 1:500

LEGEND

- STAGE 1A / STAGE 2A WORK AREA
- STAGE 1B / STAGE 2B WORK AREA
- STAGE 1A / STAGE 2A TRAFFIC
- STAGE 1B / STAGE 2B TRAFFIC

- NOTES:
- ALL TEMPORARY SIGNAGE AND TRAFFIC CONTROL TO BE IN ACCORDANCE WITH THE LATEST EDITION OF THE MANUAL OF TEMPORARY TRAFFIC CONTROL ON CITY STREETS.
  - CONTRACTOR TO MAINTAIN VEHICLE ACCESS TO ALL SIDE STREETS AND PRIVATE APPROACHES AS PER THE TRAFFIC MANAGEMENT AND CONSTRUCTION STAGING PLAN. CONTRACTOR TO COORDINATE TEMPORARY APPROACH CLOSURES IN ADVANCE WITH AFFECTED PROPERTIES AND AS APPROVED BY THE CONTRACT ADMINISTRATOR.
  - CONSTRUCTION STAGING SHOWN IS FOR CONSTRUCTION OF CONCRETE PAVEMENT. CONTINUOUS EXCAVATION AND PLACEMENT OF BASE AND SUB-BASE MATERIALS WILL BE PERMITTED, PROVIDED THE CONTRACTOR COORDINATES/MAINTAINS ACCESS WITH THE AFFECTED PROPERTIES.
  - PROPERLY EQUIPPED FLAG PERSONS ARE REQUIRED WHEN MOVING ANY CONSTRUCTION VEHICLES INTO OR OUT OF TRAFFIC.
  - CONTRACTOR TO INSTALL AND MAINTAIN ALL REQUIRED SIGNAGE, CONTRACTOR IS RESPONSIBLE FOR TRAFFIC CONTROL SIGNAGE AND REGULATORY SIGNAGE, WHICH INCLUDES POSTING PARKING RESTRICTIONS FOR CONSTRUCTION ACCESS.
  - TYPICAL SPACING BETWEEN POLYPOSTS IS 9.0m.
  - MAINTAIN PEDESTRIAN ACCESS ON WEST SIDEWALK DURING STAGE 2.

LOCATION APPROVED UNDERGROUND STRUCTURES

SUPV. U/G STRUCTURES COMMITTEE DATE

NOTE: LOCATION OF UNDERGROUND STRUCTURES AS SHOWN ARE BASED ON THE BEST INFORMATION AVAILABLE, BUT NO GUARANTEE IS GIVEN THAT ALL EXISTING UTILITIES ARE SHOWN OR THAT THE GIVEN LOCATIONS ARE EXACT. CONFIRMATION OF EXISTENCE AND EXACT LOCATION OF ALL SERVICES MUST BE OBTAINED FROM THE INDIVIDUAL UTILITIES BEFORE PROCEEDING WITH CONSTRUCTION.

B.M. ELEV.

0	ISSUED FOR TENDER	03/12/2026	BC		
A	ISSUED FOR REVIEW	03/02/2026	BC		
NO.	REVISIONS	DATE	BY	DATE	

AECOM

DESIGNED BY	BC	CHECKED BY	RC
DRAWN BY	PAAP	APPROVED BY	RC
HOR. SCALE:	1:500	RELEASED FOR CONSTRUCTION BY:	
VERTICAL:	N/A		
DATE	28/01/2026	DATE	

ENGINEER'S SEAL

CONSULTANT DRAWING NO. CT-01

ENGINEERS GEOSCIENTISTS MANITOBA

Certificate of Authorization  
AECOM Canada ULC  
No. 4671 Date: 03/12/2026

METRIC

WHOLE NUMBERS INDICATE MILLIMETRES  
DECIMALIZED NUMBERS INDICATE METRES

Winnipeg

THE CITY OF WINNIPEG  
PUBLIC WORKS DEPARTMENT  
ENGINEERING DIVISION

2026 LOCAL STREET  
RENEWAL PROGRAM

CITY DRAWING NUMBER

SHEET 01 OF 36

BRADFORD STREET  
TRAFFIC MANAGEMENT AND CONSTRUCTION STAGING PLAN