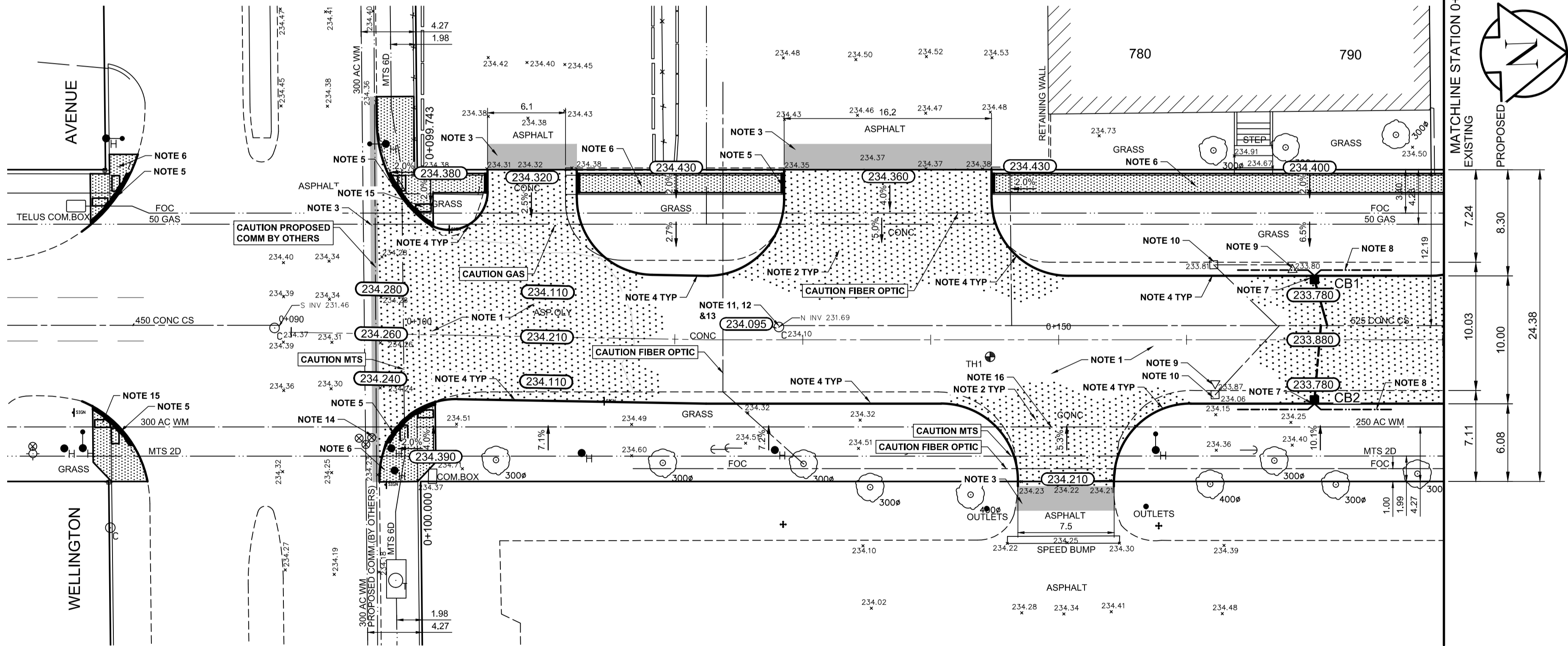


TYPICAL BRADFORD STREET CROSS SECTION  
Scale N.T.S.

CATCH BASIN TABLE								
ITEM	RIM ELEV.	Sta	INVERT					LEAD
			EAST	WEST	NORTH	SOUTH	SEWER	
CB01	233.780	0+169.91	232.130		232.780	232.780	231.560	525mm CS, 3.7m
CB02	233.780	0+169.91		232.130	232.780	232.780	231.560	525mm CS, 5.8m

- REFERENCE NOTES:
- PAVEMENT DIMENSIONS ARE TO BACK OF CURB
  - BASELINE IS CENTRE LINE ROADWAY
  - PROPERTY LINES OBTAINED FROM CITY OF WINNIPEG L.B.I.S., AND NO SCALE FACTOR WAS APPLIED
  - REFER TO AECOM FIELD BOOK NO. 5215
  - REFER TO DRAWING CT-05 FOR PROPOSED PAVEMENT GEOMETRY

- CONSTRUCTION NOTES:
- REMOVE EXISTING PAVEMENT AND CONSTRUCT NEW 250mm PLAIN DOWELLED CONCRETE PAVEMENT
  - REMOVE EXISTING PAVEMENT AND CONSTRUCT NEW 200mm REINFORCED CONCRETE PAVEMENT
  - REMOVE EXISTING ASPHALT PAVEMENT AND PLACE NEW ASPHALT PAVEMENT TYPE MS1
  - CONSTRUCT NEW MODIFIED BARRIER CURB (180mm HT. INTEGRAL)
  - CONSTRUCT NEW RAMP CURB (10-12mm HT. INTEGRAL)
  - CONSTRUCT NEW 100mm CONCRETE SIDEWALK
  - INSTALL NEW CURB AND GUTTER INLET c/w 1800mm CATCHBASIN (SD-024) AND CONNECT 250mm PVC LDS TO EXISTING 525mm COMBINED SEWER
  - INSTALL NEW 150mm SUBDRAIN 6.0m ON EACH SIDE OF CATCH BASIN
  - REMOVE EXISTING CATCH PIT AND ABANDON LEAD
  - REMOVE EXISTING CATCH BASIN AND ABANDON LEAD
  - ADJUST EXISTING MANHOLE TO GRADE
  - REMOVE EXISTING FRAME AND COVER AND PLACE NEW FRAME AND COVER (AP-006/AP-007)
  - INSTALL NEW CAST IRON RISER RING
  - ADJUST EXISTING WATER VALVE TO GRADE
  - INSTALL DETECTABLE SURFACE WARNING TILE
  - CONTRACTOR TO LOCATE AND INSULATE LONG SIDE OF WATER SERVICES



**ENGINEERS  
SCIENTISTS  
MANITOBA**  
Certificate of Authorization  
AECOM Canada ULC.  
No. 4671 Date: 03/12/2026

**METRIC**  
WHOLE NUMBERS INDICATE MILLIMETRES  
DECIMALIZED NUMBERS INDICATE METRES

EXISTING	LEGEND - PLAN	PROPOSED	EXISTING	LEGEND - PLAN	PROPOSED	EXISTING	LEGEND - PROFILE	PROPOSED
150 mm W.M.	WATERMAIN	150 mm W.M.	HYDRO	M.T.S.	HYDRO	PROFILE	N/W GUTTER	
300mm L.D.S.	LAND DRAINAGE SEWER	300mm L.D.S.	CONCRETE	CONCRETE	CONCRETE	S/E GUTTER		
250mm W.W.S.	WASTEWATER SEWER	250mm W.W.S.	ASPHALT	ASPHALT	ASPHALT	N/W PROPERTY LINE		
MANHOLE	MANHOLE	MANHOLE	PROPERTY LINE	PROPERTY LINE	PROPERTY LINE	S/E PROPERTY LINE		
CATCH BASIN	CATCH BASIN	CATCH BASIN	SURVEY BAR	SURVEY BAR	SURVEY BAR			
CATCH PIT	CATCH PIT	CATCH PIT	ELEVATION	ELEVATION	ELEVATION			
TRAFFIC SIGNAL POLE	TRAFFIC SIGNAL POLE	TRAFFIC SIGNAL POLE	TREE	TREE	TREE			
STREET LIGHT	STREET LIGHT	STREET LIGHT	SIDEWALK RAMP	SIDEWALK RAMP	SIDEWALK RAMP			
GAS	GAS	GAS	CONCRETE SIDEWALK	CONCRETE SIDEWALK	CONCRETE SIDEWALK			
			FENCE	FENCE	FENCE			

LOCATION APPROVED  
UNDERGROUND STRUCTURES

SUPV. U/G STRUCTURES  
COMMITTEE

NOTE:  
LOCATION OF UNDERGROUND STRUCTURES AS SHOWN ARE BASED ON THE BEST INFORMATION AVAILABLE. BUT NO GUARANTEE IS GIVEN THAT THE GIVEN LOCATIONS ARE EXACT. CONFIRMATION OF EXISTENCE AND EXACT LOCATION OF ALL SERVICES MUST BE OBTAINED FROM THE INDIVIDUAL UTILITIES BEFORE PROCEEDING WITH CONSTRUCTION.

B.M. ELEV. 12 - S.E. Cor. King Edward St. & Saskatchewan Ave., Tblt. in N. Conc. foundation No. 945 King Edward St., 1m E. & 0.7m below brick of N.W. Cor. of Bldg.

ELEVATION: 234.972			
0	ISSUED FOR TENDER	03/12/2026	BC
A	ISSUED FOR REVIEW	03/02/2026	BC
NO.	REVISIONS	DATE	BY

**AECOM**

DESIGNED BY	BC	CHECKED BY	RC
DRAWN BY	RAM	APPROVED BY	RC
HOR. SCALE:	1:250	RELEASED FOR CONSTRUCTION BY:	
VERTICAL:	1:10	DATE	24/10/2025

ENGINEER'S SEAL

CONSULTANT DRAWING NO.  
CT-06

**THE CITY OF WINNIPEG**  
PUBLIC WORKS DEPARTMENT  
ENGINEERING DIVISION

2026 LOCAL STREET RENEWAL PROGRAM BRADFORD STREET	CITY DRAWING NUMBER
CONCRETE PAVEMENT RECONSTRUCTION WELLINGTON AVENUE TO STATION 0+180 PLAN/PROFILE	SHEET 06 OF 36