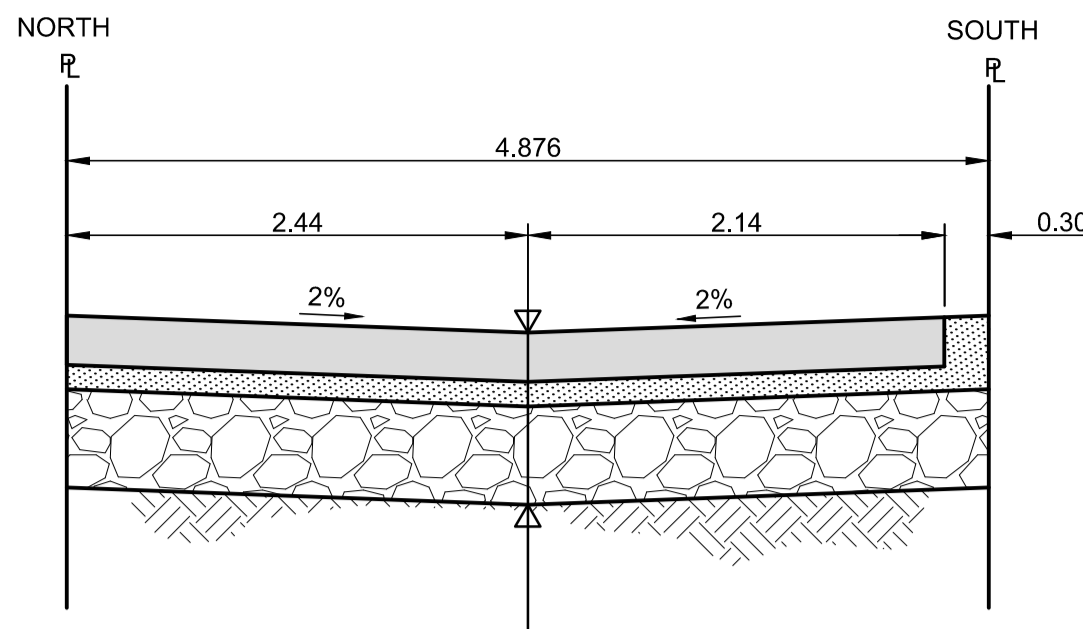


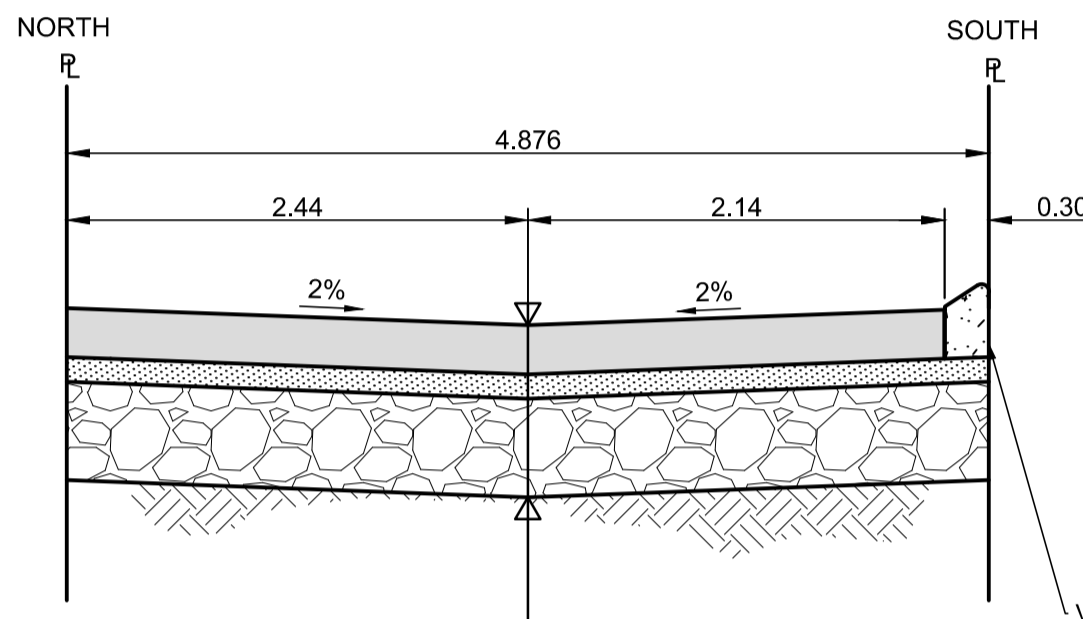
TESTHOLE TH2



50 ASPHALT (TYPE MS1)
70 ASPHALT (TYPE MS2)
100 GRANULAR A LESTONE BASE COURSE
350 - 50mm GRANULAR B RCA SUBBASE (PLACED IN TWO LIFTS, 125mm OVER 225mm)
CLASS A GEOGRID
SEPARATION/FILTRATION GEOTEXTILE FABRIC
PREPARED SUBGRADE

SECTION - TYPICAL

Scale NTS



50 ASPHALT (TYPE MS1)
70 ASPHALT (TYPE MS2)
100 GRANULAR A LESTONE BASE COURSE
350 - 50mm GRANULAR B RCA SUBBASE (PLACED IN TWO LIFTS, 125mm OVER 225mm)
CLASS A GEOGRID
SEPARATION/FILTRATION GEOTEXTILE FABRIC
PREPARED SUBGRADE

SECTION - LIP CURB

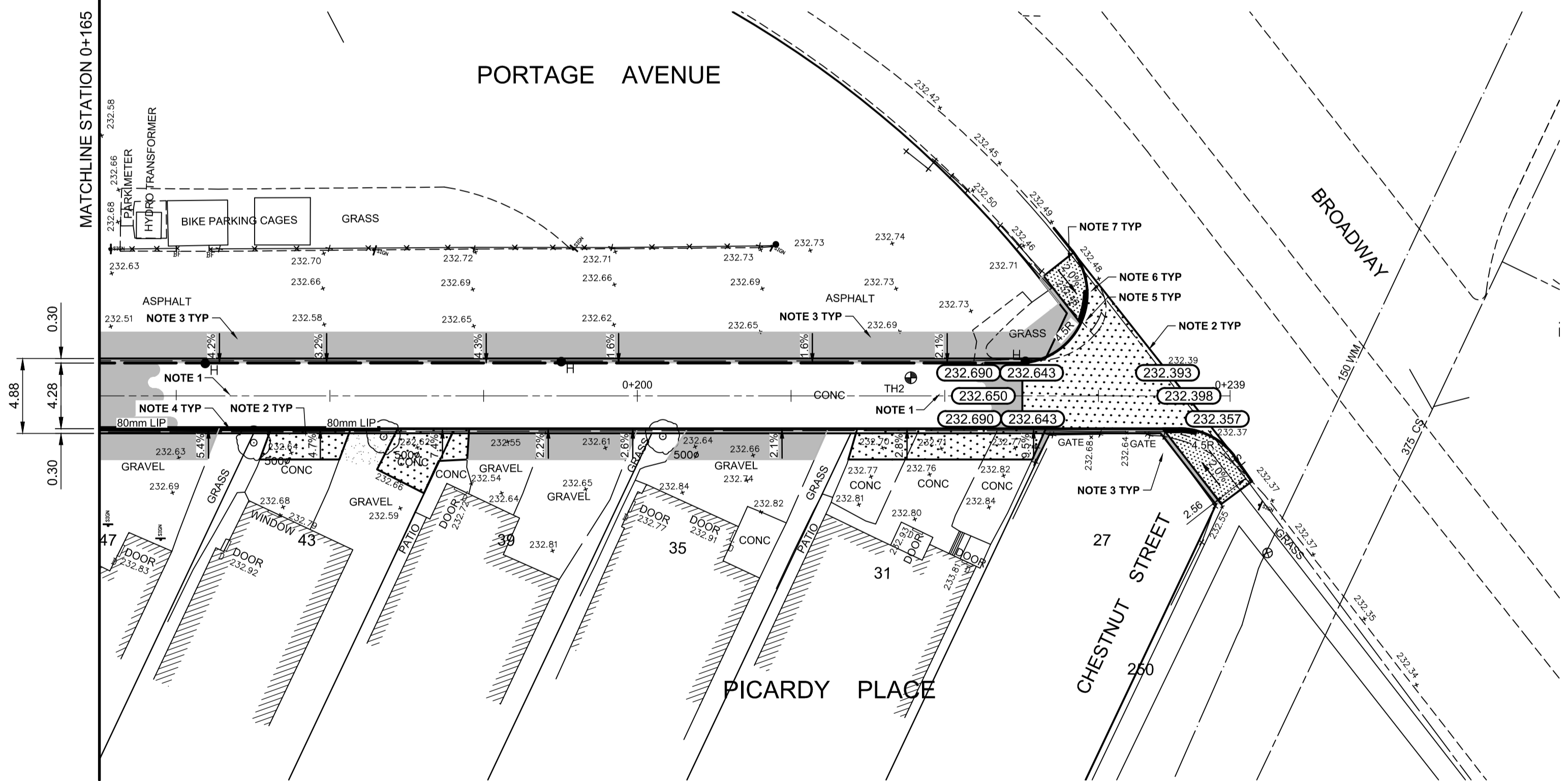
Scale NTS

REFERENCE NOTES:

- PAVEMENT DIMENSIONS ARE TO BACK OF CURB
- PROPERTY LINES OBTAINED FROM CITY OF WINNIPEG L.B.I.S., AND NO SCALE FACTOR WAS APPLIED
- REFER TO AECOM FIELD BOOK NO. 5212

CONSTRUCTION NOTES:

- REMOVE EXISTING PAVEMENT AND CONSTRUCT NEW 50mm TYPE MS1 AND 75mm TYPE MS2 ASPHALT PAVEMENT
- REMOVE EXISTING PAVEMENT AND CONSTRUCT NEW 200mm REINFORCED CONCRETE PAVEMENT
- REMOVE EXISTING PAVEMENT AND CONSTRUCT NEW 75mm TYPE MS1 ASPHALT PAVEMENT
- CONSTRUCT NEW MOUNTABLE CURB (80mm HT. MONOLITHIC)
- CONSTRUCT NEW CURB RAMP (10-12mm REVEAL HT. INTEGRAL)
- CONSTRUCT NEW MODIFIED BARRIER CURB (180mm HT. INTEGRAL)
- RENEW EXISTING 100mm CONCRETE SIDEWALK



Certificate of Authorization

AECOM Canada ULC.

No. 4671 Date: 03/12/2026

METRIC

WHOLE NUMBERS INDICATE MILLIMETRES
DECIMALIZED NUMBERS INDICATE METRES

EXISTING	LEGEND - PLAN	PROPOSED	EXISTING	LEGEND - PLAN	PROPOSED	EXISTING	LEGEND - PROFILE	PROPOSED
150 mm W.M.	WATERMAIN	150 mm W.M.	HYDRO	M.T.S.	HYDRO	PROFILE	N/W GUTTER	
300mm L.D.S.	VALVE	300mm L.D.S.	CONCRETE	CONCRETE	CONCRETE	S/E GUTTER		
250mm W.W.S.	LAND DRAINAGE SEWER	250mm W.W.S.	ASPHALT	ASPHALT	ASPHALT	N/W PROPERTY LINE		
	WASTEWATER SEWER		PROPERTY LINE	PROPERTY LINE	PROPERTY LINE	S/E PROPERTY LINE		
	MANHOLE		SURVEY BAR	SURVEY BAR	SURVEY BAR			
	CATCH BASIN		ELEVATION	ELEVATION	ELEVATION			
	CATCH PIT		TREE	TREE	TREE			
	TRAFFIC SIGNAL POLE		SIDEWALK RAMP	SIDEWALK RAMP	SIDEWALK RAMP			
	STREET LIGHT		CONCRETE SIDEWALK	CONCRETE SIDEWALK	CONCRETE SIDEWALK			
	GAS		FENCE	FENCE	FENCE			

LOCATION APPROVED UNDERGROUND STRUCTURES

SUPV. U/G STRUCTURES COMMITTEE

NOTE:
LOCATION OF UNDERGROUND STRUCTURES AS SHOWN ARE BASED ON THE BEST INFORMATION AVAILABLE. BUT NO GUARANTEE IS GIVEN THAT ALL EXISTING UTILITIES ARE SHOWN OR THAT THE GIVEN LOCATIONS ARE EXACT. CONFIRMATION OF EXISTENCE AND EXACT LOCATION OF ALL SERVICES MUST BE OBTAINED FROM THE INDIVIDUAL UTILITIES BEFORE PROCEEDING WITH CONSTRUCTION.

B.M. 65 - S.E. Cor. Portage Ave. & Chestnut St., 19mm dia. x 6.1m I.B. ELEV. in Valve Box, 2m W. of E.L. Chestnut St. & 0.3m S. of S.L. Portage Ave.

ELEVATION: 232.440

0 ISSUED FOR TENDER 03/12/2026 BC
A ISSUED FOR REVIEW 03/02/2026 BC
NO. REVISIONS DATE BY

AECOM

DESIGNED BY BC

CHECKED BY RC

DRAWN BY RAM

APPROVED BY RC

HOR. SCALE: 1:250

RELEASED FOR CONSTRUCTION BY:

VERTICAL: 1:10

DATE

ENGINEER'S SEAL



PUBLIC WORKS DEPARTMENT
ENGINEERING DIVISION

2026 LOCAL STREET RENEWAL PROGRAM
PORTAGE AVENUE & PICARDY PLACE ALLEY

CITY DRAWING NUMBER

SHEET 34 OF 36

ASPHALT PAVEMENT RECONSTRUCTION
STATION 0+165 TO BROADWAY
PLAN/PROFILE