

- REFERENCE NOTES:**
- A. PAVEMENT DIMENSIONS ARE TO BACK OF CURB
  - B. PROPERTY LINES OBTAINED FROM CITY OF WINNIPEG L.B.I.S., AND NO SCALE FACTOR WAS APPLIED
  - C. REFER TO AECOM FIELD BOOK NO. 5172

- CONSTRUCTION NOTES:**
1. PLANE ASPHALT PAVEMENT (50-100mm DEPTH)
  2. REMOVE ASPHALT PAVEMENT
  3. REMOVE CONCRETE PAVEMENT
  4. REMOVE CONCRETE BARRIER CURB (SEPARATE)
  5. REMOVE 100mm CONCRETE SIDEWALK
  6. CONSTRUCT NEW ASPHALT PAVEMENT OVERLAY (TYPE MS1/MS2 85mm AVERAGE THICKNESS)
  7. REMOVE EXISTING CONCRETE PAVEMENT AND CONSTRUCT NEW 200mm REINFORCED CONCRETE PAVEMENT c/w ASPHALT PAVEMENT OVERLAY (TYPE MS1/MS2 85mm AVERAGE THICKNESS)
  8. CONSTRUCT NEW MULTI-USE ASPHALT PATH (REFER TO SP19, DETAIL 1)
  9. INSTALL NEW MONOLITHIC CONCRETE BARRIER CURB AND SPLASH STRIP (150mm HT, 750mm WIDTH) (SD-223A)
  10. INSTALL NEW MONOLITHIC CONCRETE MODIFIED BARRIER CURB AND SPLASH STRIP (150mm HT, 750mm WIDTH) (SD-223A)
  11. RENEW CONCRETE BARRIER CURB (150mm HT, DOWELLED)
  12. RENEW 100mm CONCRETE SIDEWALK
  13. INSTALL CONCRETE CURB RAMP (8-12mm HT, MONOLITHIC)
  14. INSTALL NEW 100mm CONCRETE SIDEWALK
  15. INSTALL NEW MONOLITHIC CONCRETE BULLNOSE AND MEDIAN SLAB
  16. INSTALL DETECTABLE WARNING SURFACE TILE
  17. REMOVE EXISTING CATCH PIT / CATCH BASIN
  18. INSTALL NEW 1800mm CATCH BASIN (SD-024) c/w BARRIER CURB AND GUTTER INLET FRAME AND COVER (AP-011/AP-012) AND CONNECT 250mm  $\phi$  PVC SEWER SERVICE TO EXISTING 450 CONC CS
  19. INSTALL NEW 1800mm CATCH BASIN (SD-024) c/w BARRIER CURB AND GUTTER INLET FRAME AND COVER (AP-011/AP-012) AND CONNECT 250mm  $\phi$  PVC SEWER SERVICE TO EXISTING LEAD
  20. INSTALL NEW 1200mm CATCH BASIN (SD-024) c/w BARRIER CURB AND GUTTER INLET FRAME AND COVER (AP-011/AP-012) AND CONNECT 250mm  $\phi$  PVC SEWER SERVICE TO NEW CB
  21. INSTALL NEW CATCH PIT (SD-023) c/w BARRIER CURB AND GUTTER INLET FRAME AND COVER (AP-011/AP-012) AND CONNECT 250mm  $\phi$  PVC SEWER SERVICE TO EXISTING CB
  22. ADJUST EXISTING MANHOLE / CATCH BASIN TO GRADE
  23. INSTALL CAST IRON RISER RING
  24. REPLACE SOLID FRAME AND COVER (AP-006/AP-007)
  25. ADJUST EXISTING WATER VALVE TO GRADE
  26. ADJUST EXISTING WATER SERVICE SHUTOFF VALVE
  27. REMOVE EXISTING CONCRETE PAVEMENT AND CONSTRUCT NEW 200mm REINFORCED CONCRETE PAVEMENT c/w SEPARATION GEOTEKILE (150mm SUB-BASE (50mm SIZE), 50mm BASE COURSE, ASPHALT PAVEMENT OVERLAY TYPE MS1/MS2 85mm AVERAGE THICKNESS)

**PRELIMINARY  
NOT FOR CONSTRUCTION**

**ENGINEERS  
GEOSCIENTISTS  
MANTOBA**  
Certificate of Authorization  
AECOM Canada ULC  
No. 4671

**METRIC**  
WHOLE NUMBERS INDICATE MILLIMETRES  
DECIMALIZED NUMBERS INDICATE METRES

150 mm W.W.S.	WATERMAIN	150 mm W.W.S.	HYDRO	PROFILE	LOCATION APPROVED UNDERGROUND STRUCTURES
Hydrant	HYDRANT	Hydrant	M.T.S.	WB GUTTER	
Valve	VALVE	Valve	CONCRETE	WB MEDIAN GUTTER	
300mm L.D.S.	LAND DRAINAGE SEWER	300mm L.D.S.	ASPHALT	EB GUTTER	
250mm W.W.S.	WASTEWATER SEWER	250mm W.W.S.	PROPERTY LINE	EB MEDIAN GUTTER	
Manhole	MANHOLE	Manhole	SURVEY BAR		
Catch Basin	CATCH BASIN	Catch Basin	ELEVATION (35.750)		
Catch Pit	CATCH PIT	Catch Pit	TREE		
Traffic Signal Pole	TRAFFIC SIGNAL POLE	Traffic Signal Pole	SIDEWALK RAMP		
Street Light	STREET LIGHT	Street Light	CONCRETE SIDEWALK		
Gas	GAS	Gas	FENCE		
EXISTING	LEGEND - PLAN	PROPOSED	EXISTING	LEGEND - PROFILE	PROPOSED

**PLAN**  
Scale 1:250

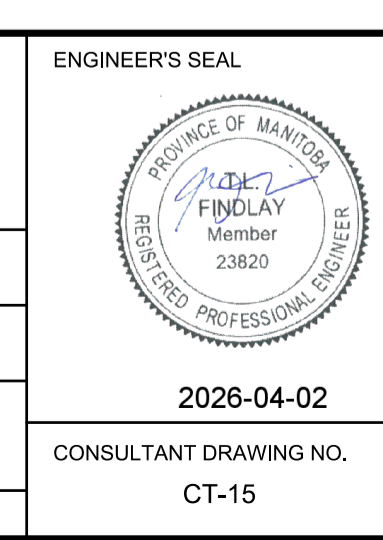
**LOCATION APPROVED UNDERGROUND STRUCTURES**

SUPV. U/G STRUCTURES COMMITTEE DATE

NOTE:  
LOCATION OF UNDERGROUND STRUCTURES AS SHOWN ARE BASED ON THE BEST INFORMATION AVAILABLE. BUT NO GUARANTEE IS GIVEN THAT ALL EXISTING UTILITIES ARE SHOWN OR THAT THE GIVEN LOCATIONS ARE EXACT. CONFIRMATION OF EXISTENCE AND EXACT LOCATION OF ALL SERVICES MUST BE OBTAINED FROM THE INDIVIDUAL UTILITIES BEFORE PROCEEDING WITH CONSTRUCTION.

B.M. 84R523 - S.W. Cor. Corydon Ave. & Park Blvd. N., Tbl. on top of 0.05 m dia. x 2.4 m iron pipe 2.6 m N. of S.L. of Corydon Ave. & 6.2 m E. of W.L. of Park Blvd. N. ELEVATION: 233.773  
HORIZONTAL: Northing: 552315.364, Easting: 627893.162

DESIGNED BY	JRC	CHECKED BY	TLF
DRAWN BY	RAM	APPROVED BY	TLF
HOR. SCALE:	1:250	RELEASED FOR CONSTRUCTION BY:	
VERTICAL:	1:10	DATE	04/02/2026



**THE CITY OF WINNIPEG**  
PUBLIC WORKS DEPARTMENT  
ENGINEERING DIVISION

2026 REGIONAL STREET RENEWAL PROGRAM  
CORYDON AVENUE

ASPHALT PAVEMENT REHABILITATION  
STATION 1+545 TO STATION 1+675 WEST BOUND  
PLAN-PROFILE

CITY DRAWING NUMBER P-3601-15  
SHEET 16 OF 28

2026-04-02  
CONSULTANT DRAWING NO. CT-15