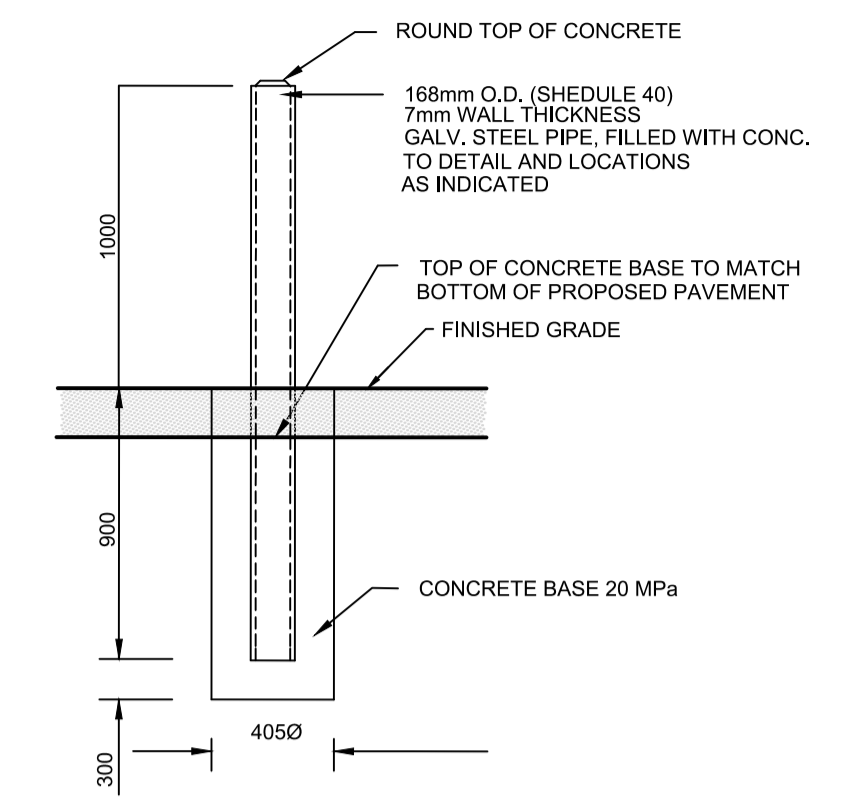
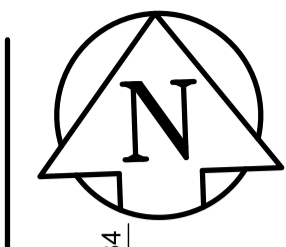
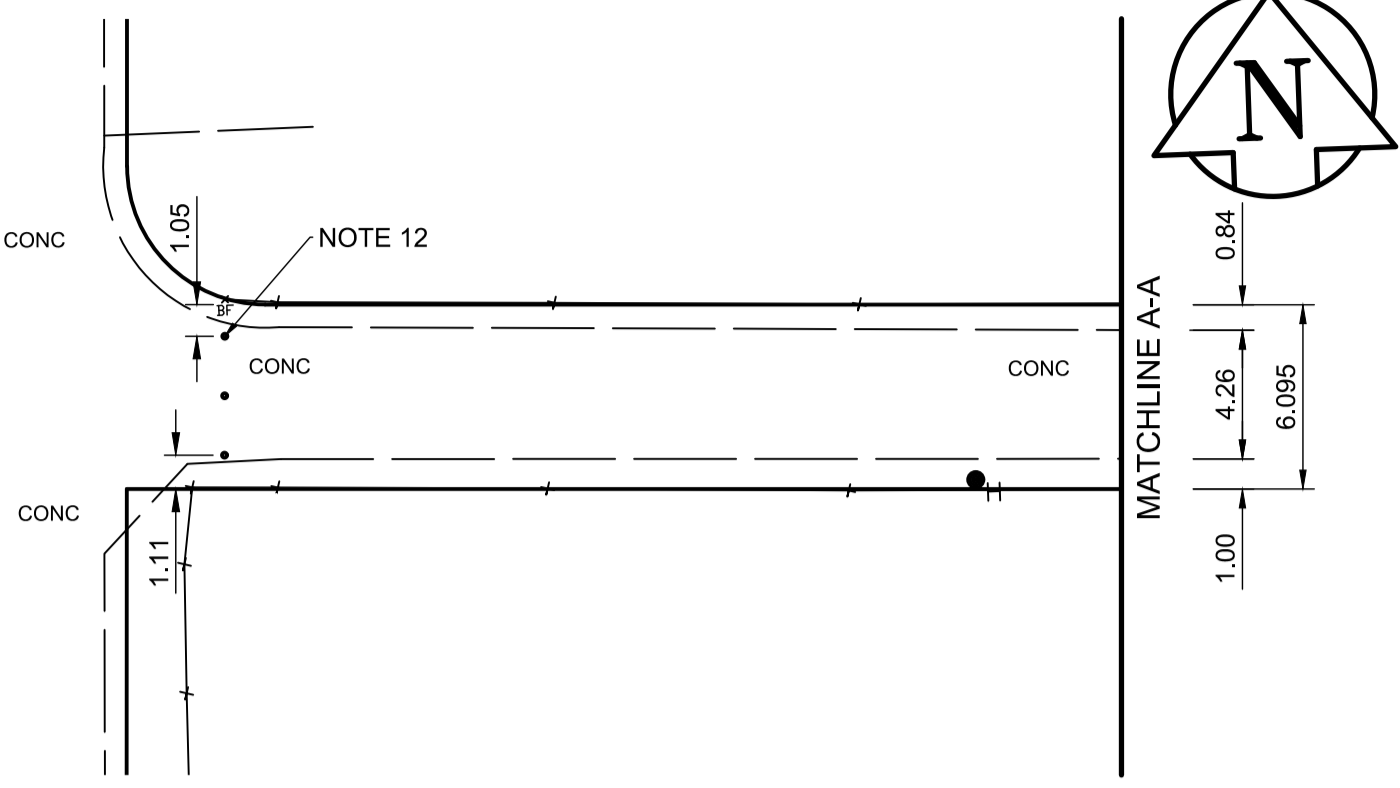
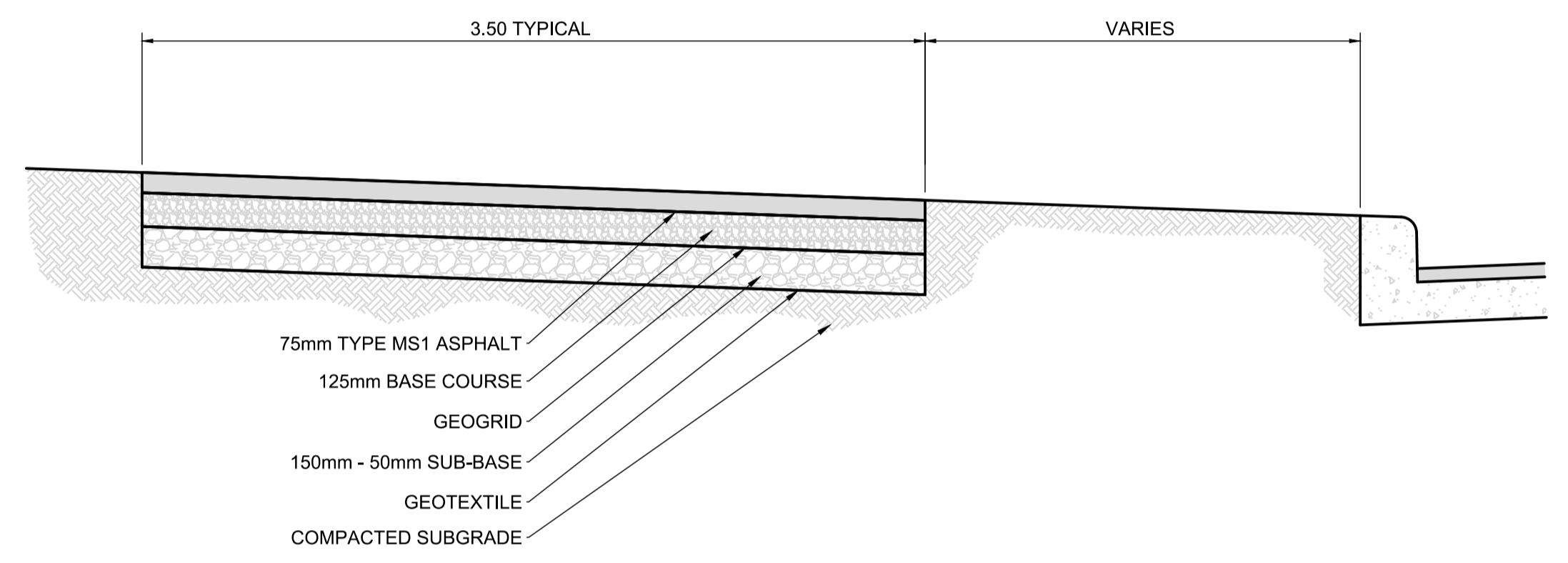


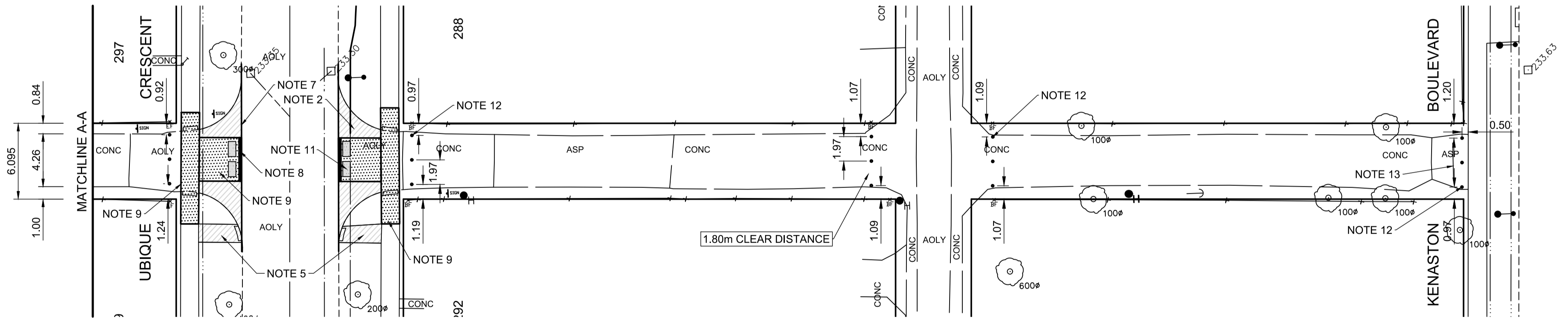
PLAN
Scale 1:250



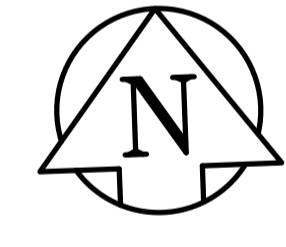
DETAIL 2 - BOLLARD
Scale NTS



DETAIL 1 - MULTI-USE ASPHALT PATHWAY STRUCTURE
Scale NTS



PLAN
Scale 1:250



- REFERENCE NOTES:**
- A. PAVEMENT DIMENSIONS ARE TO BACK OF CURB
 - B. PROPERTY LINES OBTAINED FROM CITY OF WINNIPEG L.B.I.S., AND NO SCALE FACTOR WAS APPLIED
 - C. REFER TO AECOM FIELD BOOK NO. 5172
- CONSTRUCTION NOTES:**
1. PLANE ASPHALT PAVEMENT (50-100mm DEPTH)
 2. REMOVE CONCRETE PAVEMENT
 3. REMOVE CONCRETE SIDEWALK
 4. REMOVE CONCRETE BARRIER CURB (SEPARATE)
 5. CONSTRUCT NEW ASPHALT PAVEMENT OVERLAY (TYPE MS1/MS2 75mm AVERAGE THICKNESS)
 6. CONSTRUCT ASPHALT MULTI-USE PATH
 7. INSTALL CONCRETE BARRIER CURB (150mm HT, DOWELLED)
 8. INSTALL CONCRETE CURB RAMP (8-12mm HT, MONOLITHIC)
 9. INSTALL NEW 100mm CONCRETE SIDEWALK
 10. INSTALL NEW MONOLITHIC CONCRETE CURB AND SIDEWALK
 11. INSTALL DETECTABLE SURFACE WARNING TILE
 12. INSTALL BOLLARD (REFER TO DETAIL)
 13. REMOVE JERSEY BARRIER

PRELIMINARY
NOT FOR CONSTRUCTION

ENGINEERS
GEOSCIENTISTS
MANITOBA
Certificate of Authorization
AECOM Canada ULC
No. 4671

METRIC
WHOLE NUMBERS INDICATE MILLIMETRES
DECIMALIZED NUMBERS INDICATE METRES

150 mm W.M.	WATERMAIN	150 mm W.M.	HYDRO	— — — — —	— — — — —	— — — — —	— — — — —	— — — — —
◇	HYDRANT	◆	M.T.S.	— — — — —	— — — — —	— — — — —	— — — — —	— — — — —
⊙	VALVE	⊙	CONCRETE	— — — — —	— — — — —	— — — — —	— — — — —	— — — — —
300mm L.D.S.	LAND DRAINAGE SEWER	300mm L.D.S.	ASPHALT	— — — — —	— — — — —	— — — — —	— — — — —	— — — — —
250mm W.W.S.	WASTEWATER SEWER	250mm W.W.S.	PROPERTY LINE	— — — — —	— — — — —	— — — — —	— — — — —	— — — — —
○	MANHOLE	⊕	SURVEY BAR	— — — — —	— — — — —	— — — — —	— — — — —	— — — — —
□	CATCH BASIN	235.750	ELEVATION	(35.750)	— — — — —	— — — — —	— — — — —	— — — — —
▽	CATCH PIT	300#	TREE	— — — — —	— — — — —	— — — — —	— — — — —	— — — — —
↑	TRAFFIC SIGNAL POLE	— — — — —	SIDEWALK RAMP	— — — — —	— — — — —	— — — — —	— — — — —	— — — — —
↑	STREET LIGHT	— — — — —	CONCRETE SIDEWALK	— — — — —	— — — — —	— — — — —	— — — — —	— — — — —
— — — — —	GAS	— — — — —	FENCE	— — — — —	— — — — —	— — — — —	— — — — —	— — — — —
EXISTING	LEGEND - PLAN	PROPOSED	EXISTING	LEGEND - PLAN	PROPOSED	EXISTING	LEGEND - PROFILE	PROPOSED

LOCATION APPROVED UNDERGROUND STRUCTURES

SUPV. U/G STRUCTURES COMMITTEE DATE

NOTE:
LOCATION OF UNDERGROUND STRUCTURES AS SHOWN ARE BASED ON THE BEST INFORMATION AVAILABLE. BUT NO GUARANTEE IS GIVEN THAT ALL EXISTING UTILITIES ARE SHOWN OR THAT THE GIVEN LOCATIONS ARE EXACT. CONFIRMATION OF EXISTENCE AND EXACT LOCATION OF ALL SERVICES MUST BE OBTAINED FROM THE INDIVIDUAL UTILITIES BEFORE PROCEEDING WITH CONSTRUCTION.

B.M. ELEV.	84R523 - S.W. Cor. Corydon Ave. & Park Blvd. N., Tbl. on top of 0.05 m dia. x 2.4 m iron pipe 2.6 m N. of S.L. of Corydon Ave. & 6.2 m E. of W.L. of Park Blvd. N. ELEVATION: 233.773		
HORIZONTAL	Northing: 5525315.364, Easting: 627893.162		
NO.	REVISIONS	DATE	BY
1	ISSUED FOR ADDENDUM 01	04/02/2026	TLF
0	ISSUED FOR TENDER	03/26/2026	TLF

AECOM

DESIGNED BY	JRC	CHECKED BY	TLF
DRAWN BY	RAM	APPROVED BY	TLF
HOR. SCALE:	1:250	RELEASED FOR CONSTRUCTION BY:	
VERTICAL:	N/A	DATE	04/02/2026

ENGINEER'S SEAL

PROVINCE OF MANITOBA
REGISTERED PROFESSIONAL ENGINEER
FINLAY
Member
23820
2026-04-02

CONSULTANT DRAWING NO.
CT-19

THE CITY OF WINNIPEG PUBLIC WORKS DEPARTMENT ENGINEERING DIVISION		CITY DRAWING NUMBER P-3601-19
2024 REGIONAL STREET RENEWAL PROGRAM CORYDON AVENUE		SHEET 20 OF 28
ASPHALT PAVEMENT REHABILITATION DONCASTER STREET AND LOCKSTON AVENUE - MULTI-USE PATH PLAN		