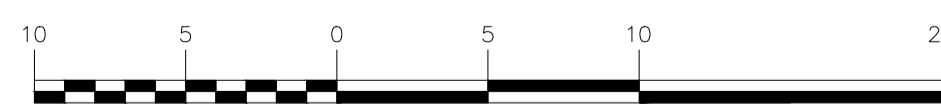
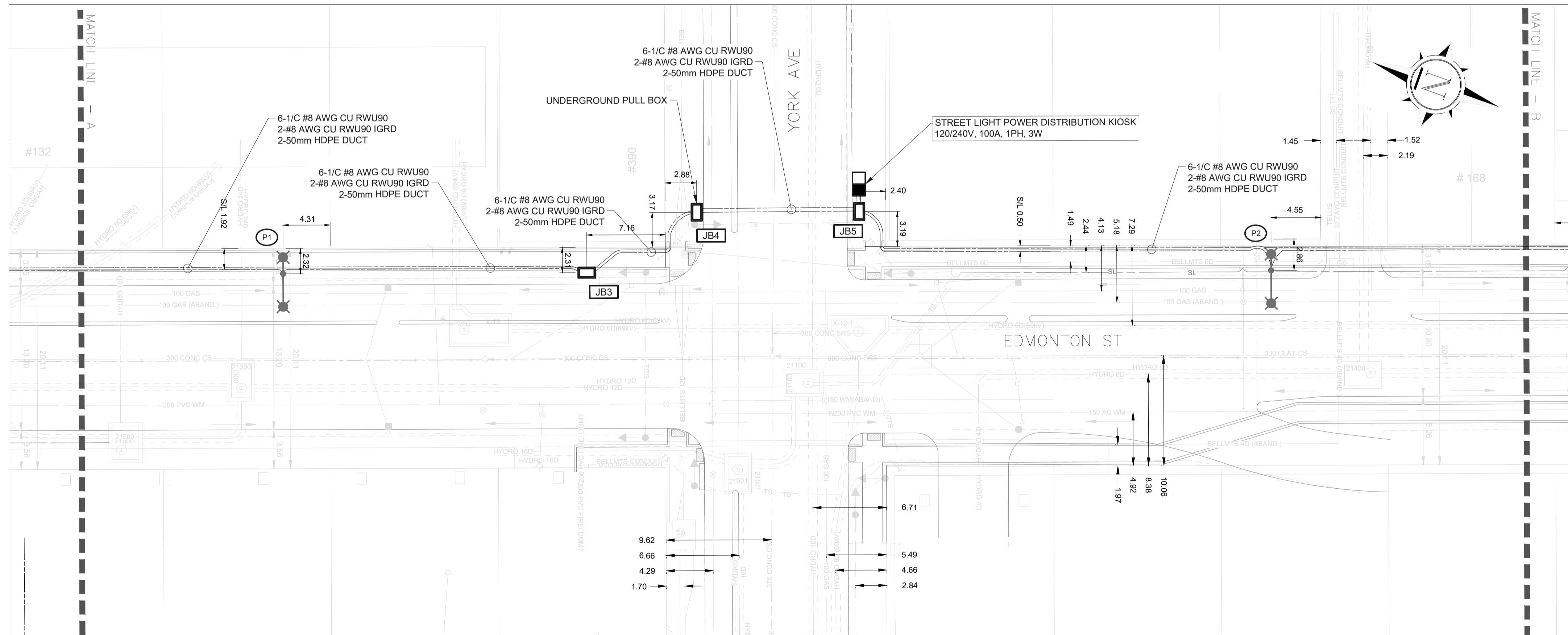
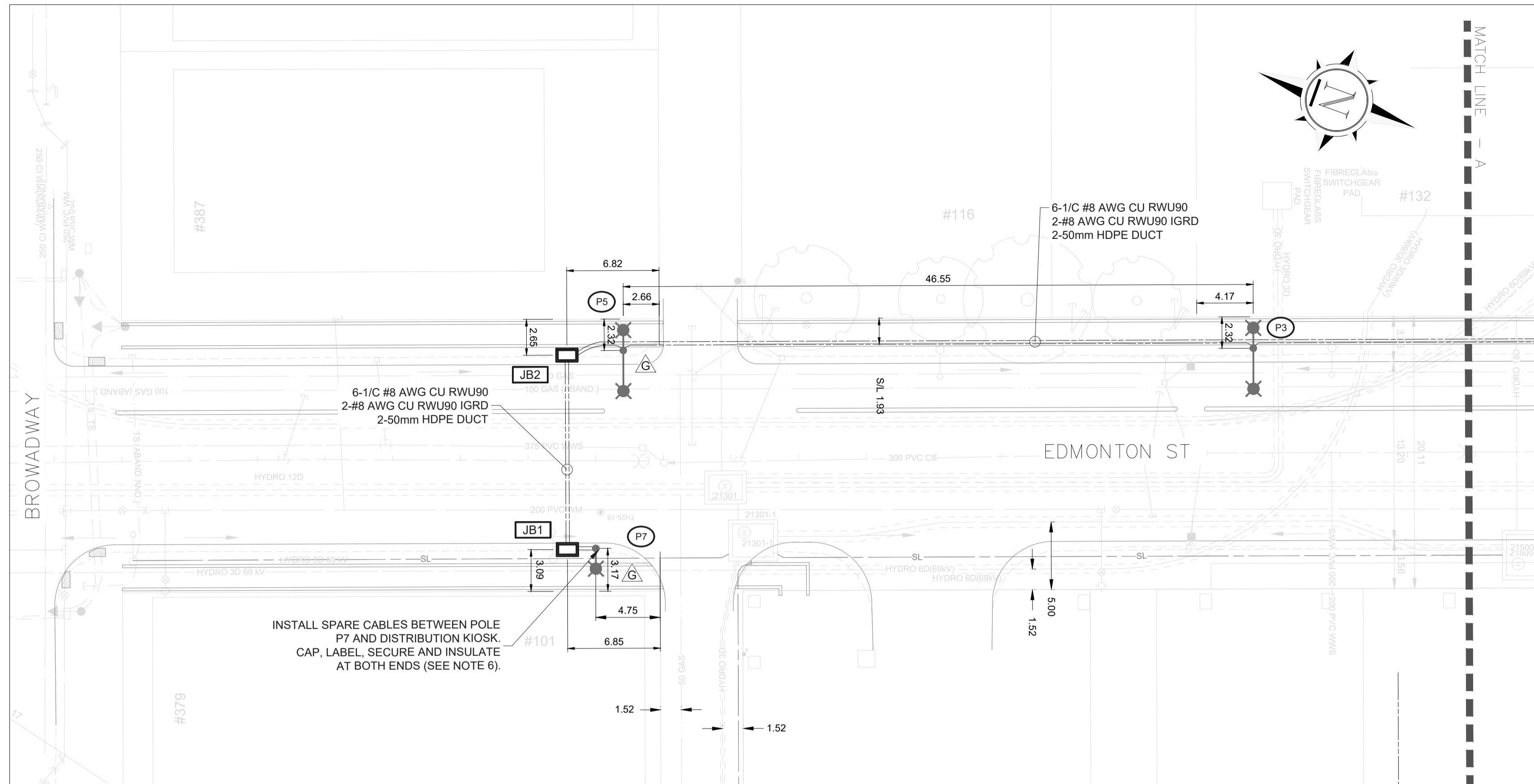
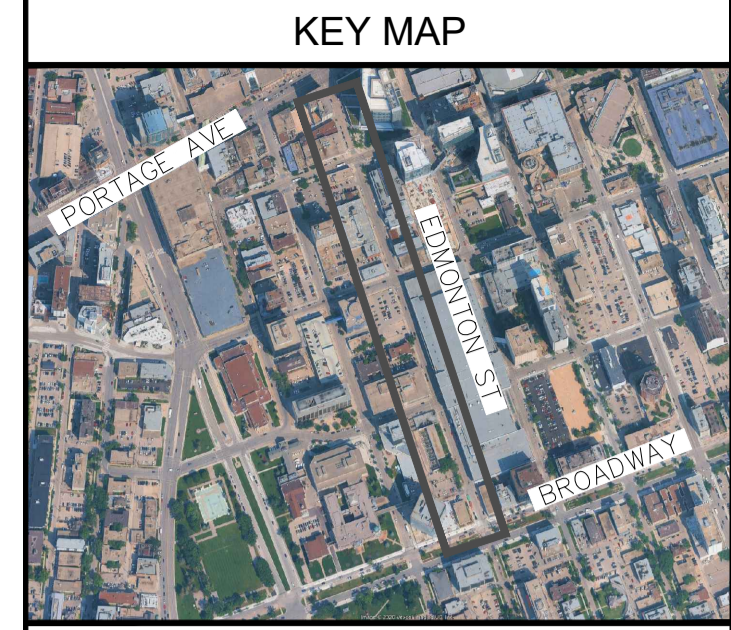


**APPENDIX 'M'**

**STREET LIGHTING AND  
PEDESTRIAN LIGHTING  
DESIGN DRAWINGS**



PLAN  
1:250



EDMONTON ST  
WINNIPEG, MB

- LEGEND — STREETLIGHTING:**
- STREETLIGHT POWER DISTRIBUTION PANEL
  - STREETLIGHT JUNCTION BOX/PULL BOX
  - STREETLIGHT DUCT
  - BASE MOUNTED 15FT POLE C/W PEDESTRIAN LUMINAIRE
  - BASE MOUNTED 35FT POLE C/W ROADWAY LUMINAIRE
  - BASE MOUNTED 35FT POLE C/W PEDESTRIAN & ROADWAY LUMINAIRE
  - GROUND ROD/PLATE

- GENERAL NOTES:**
1. VERIFY LOCATIONS OF UTILITIES AND PROTECT AGAINST DAMAGE DURING CONSTRUCTION.
  2. COORDINATE POLE FOOTING AND POWER LOCATIONS WITH CIVIL AND LANDSCAPE DRAWINGS.
  3. CONDUIT TRENCH LINE IS SHOWN FOR APPROXIMATE ROUTING. CONTRACTOR SHALL CONFIRM AND COORDINATE ROUTING OF CONDUIT WITH SITE CONDITIONS.
  4. WHERE CONDUITS ARE ROUTED UNDER ROADWAYS, COORDINATE DEPTH OF BURIAL WITH CITY OF WINNIPEG REQUIREMENTS AND UTILITY CROSSINGS.
  5. SOME ELECTRICAL SYMBOLS ARE ENLARGED FOR CLARITY AND DO NOT REPRESENT THEIR ACTUAL SIZE.
  6. REDUNDANT LOOP FEED CONDUCTORS SHALL NOT BE CONNECTED TO THE ENERGIZED CIRCUIT DURING NORMAL OPERATION. CONNECT ONLY AS REQUIRED FOR MAINTENANCE OR RESTORATION.

ClickBefore  
YouDigMB.com

**PRELIMINARY**

NO.	DATE	REVISIONS	BY
0	2024-02-13	ISSUED FOR TENDER	A.M.

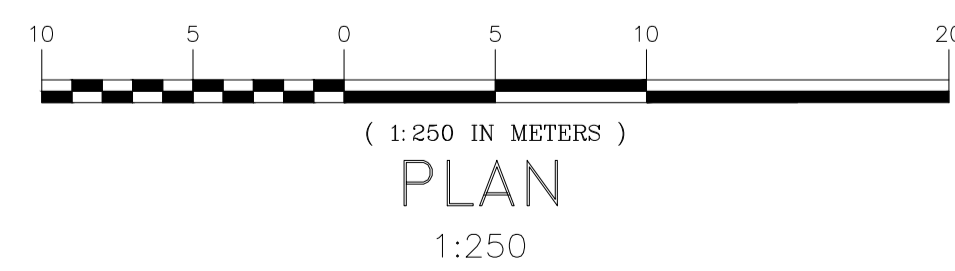
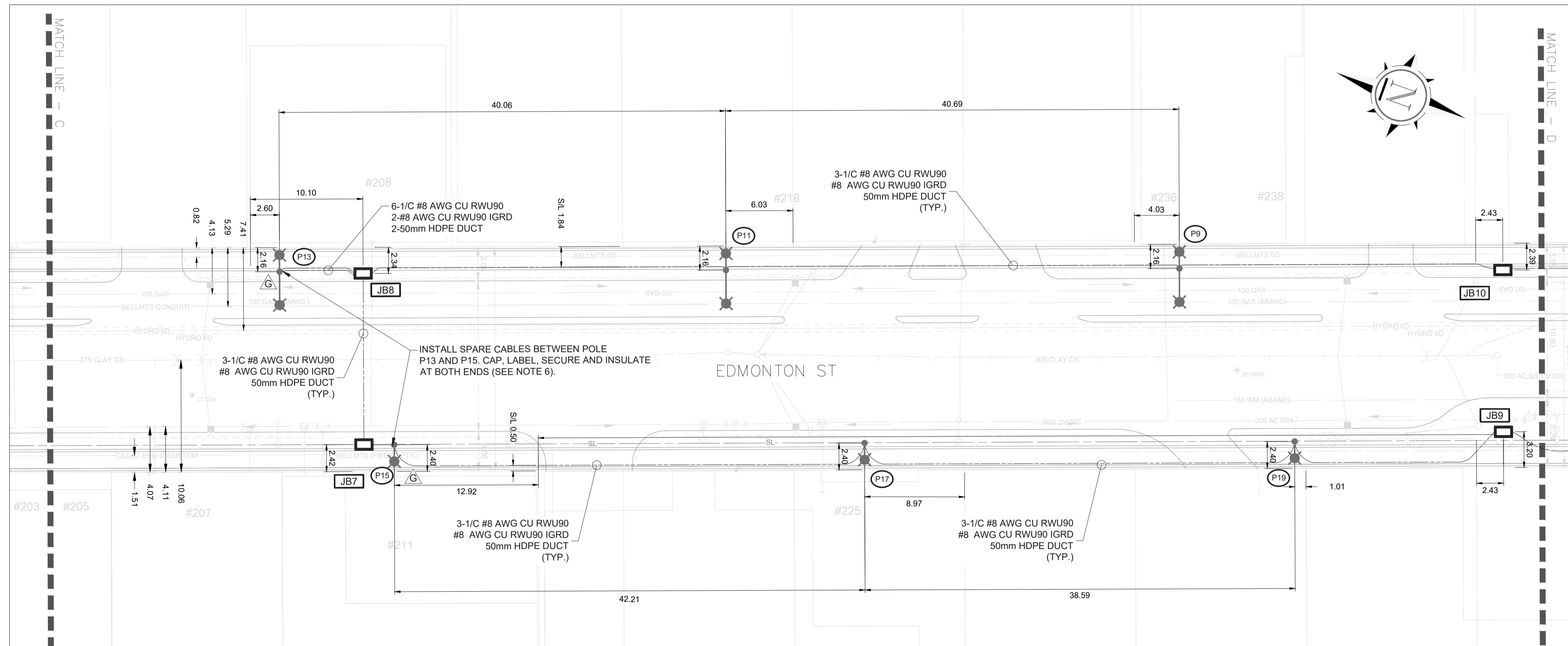
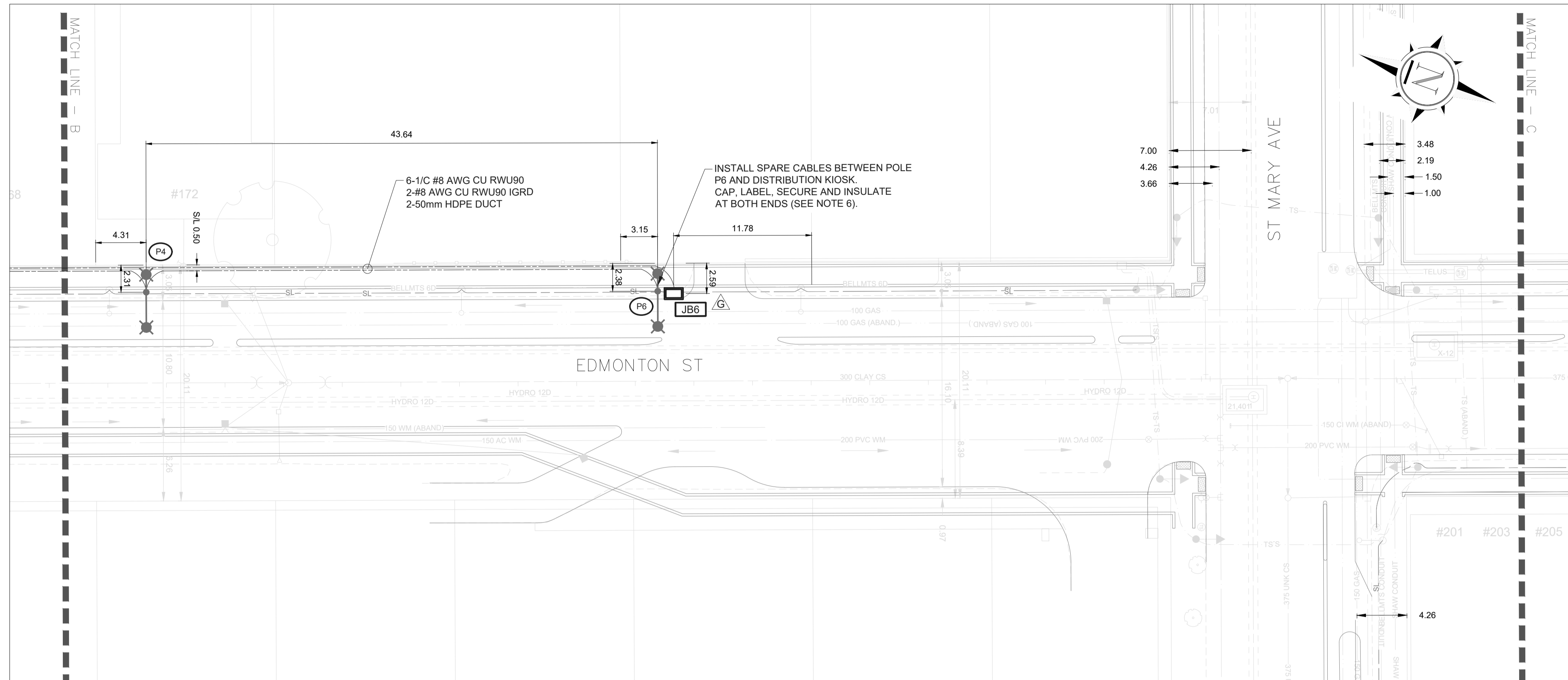
PREPARED FOR: PREPARED BY:



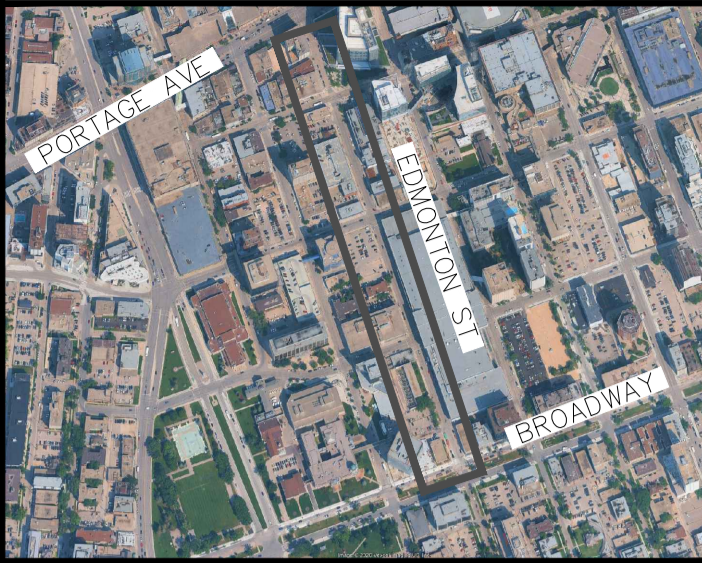
DESCRIPTION:  
EDMONTON-PORTAGE TO BROADWAY STREETLIGHTS

LOCATION:  
EDMONTON ST  
WINNIPEG, MB

DESIGNED BY: A.M.	DATE: 2024-02-13
DRAWN BY: M.M.	SIZE: ISO_A1
CONTRACTOR'S REFERENCE NO. 0019930	SCALE: 1:250
CLIENT'S PROJECT NO.	PLAN: 1 OF 5



KEY MAP



AREA: EDMONTON ST WINNIPEG, MB

LEGEND — STREETLIGHTING:

- STREETLIGHT POWER DISTRIBUTION PANEL
- STREETLIGHT JUNCTION BOX/PULL BOX
- STREETLIGHT DUCT
- BASE MOUNTED 15FT POLE C/W PEDESTRIAN LUMINAIRE
- BASE MOUNTED 35FT POLE C/W ROADWAY LUMINAIRE
- BASE MOUNTED 35FT POLE C/W PEDESTRIAN & ROADWAY LUMINAIRE
- GROUND ROD/PLATE

GENERAL NOTES:

1. VERIFY LOCATIONS OF UTILITIES AND PROTECT AGAINST DAMAGE DURING CONSTRUCTION.
2. COORDINATE POLE FOOTING AND POWER LOCATIONS WITH CIVIL AND LANDSCAPE DRAWINGS.
3. CONDUIT TRENCH LINE IS SHOWN FOR APPROXIMATE ROUTING. CONTRACTOR SHALL CONFIRM AND COORDINATE ROUTING OF CONDUIT WITH SITE CONDITIONS.
4. WHERE CONDUITS ARE ROUTED UNDER ROADWAYS, COORDINATE DEPTH OF BURIAL WITH CITY OF WINNIPEG REQUIREMENTS AND UTILITY CROSSINGS.
5. SOME ELECTRICAL SYMBOLS ARE ENLARGED FOR CLARITY AND DO NOT REPRESENT THEIR ACTUAL SIZE.
6. REDUNDANT LOOP FEED CONDUCTORS SHALL NOT BE CONNECTED TO THE ENERGIZED CIRCUIT DURING NORMAL OPERATION. CONNECT ONLY AS REQUIRED FOR MAINTENANCE OR RESTORATION.

ClickBefore YouDigMB.com

**PRELIMINARY**

NO.	DATE	REVISIONS	BY
0	2026-02-13	ISSUED FOR TENDER	A.M.

PREPARED FOR: PREPARED BY:



DESCRIPTION: EDMONTON-PORTAGE TO BROADWAY STREETLIGHTS

LOCATION: EDMONTON ST WINNIPEG, MB

DESIGNED BY: A.M.	DATE: 2026-02-13
DRAWN BY: M.M.	SIZE: ISO_A1
CONTRACTOR'S REFERENCE NO.: 0019930	SCALE: 1:250
CLIENT'S PROJECT NO.:	PLAN: 2 OF 5

KEY MAP



AREA: EDMONTON ST WINNIPEG, MB

LEGEND - STREETLIGHTING:

- STREETLIGHT POWER DISTRIBUTION PANEL
- STREETLIGHT JUNCTION BOX/PULL BOX
- STREETLIGHT DUCT
- BASE MOUNTED 15FT POLE C/W PEDESTRIAN LUMINAIRE
- BASE MOUNTED 35FT POLE C/W ROADWAY LUMINAIRE
- BASE MOUNTED 35FT POLE C/W PEDESTRIAN & ROADWAY LUMINAIRE
- GROUND ROD/PLATE

GENERAL NOTES:

1. VERIFY LOCATIONS OF UTILITIES AND PROTECT AGAINST DAMAGE DURING CONSTRUCTION.
2. COORDINATE POLE FOOTING AND POWER LOCATIONS WITH CIVIL AND LANDSCAPE DRAWINGS.
3. CONDUIT TRENCH LINE IS SHOWN FOR APPROXIMATE ROUTING. CONTRACTOR SHALL CONFIRM AND COORDINATE ROUTING OF CONDUIT WITH SITE CONDITIONS.
4. WHERE CONDUITS ARE ROUTED UNDER ROADWAYS, COORDINATE DEPTH OF BURIAL WITH CITY OF WINNIPEG REQUIREMENTS AND UTILITY CROSSINGS.
5. SOME ELECTRICAL SYMBOLS ARE ENLARGED FOR CLARITY AND DO NOT REPRESENT THEIR ACTUAL SIZE.
6. REDUNDANT LOOP FEED CONDUCTORS SHALL NOT BE CONNECTED TO THE ENERGIZED CIRCUIT DURING NORMAL OPERATION. CONNECT ONLY AS REQUIRED FOR MAINTENANCE OR RESTORATION.

ClickBefore YouDigMB.com

**PRELIMINARY**

NO.	DATE	REVISIONS	BY
0	2026-02-13	ISSUED FOR TENDER	A.M.

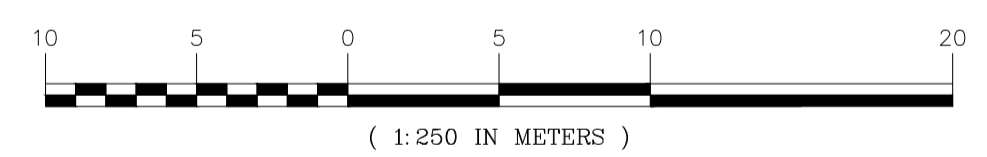
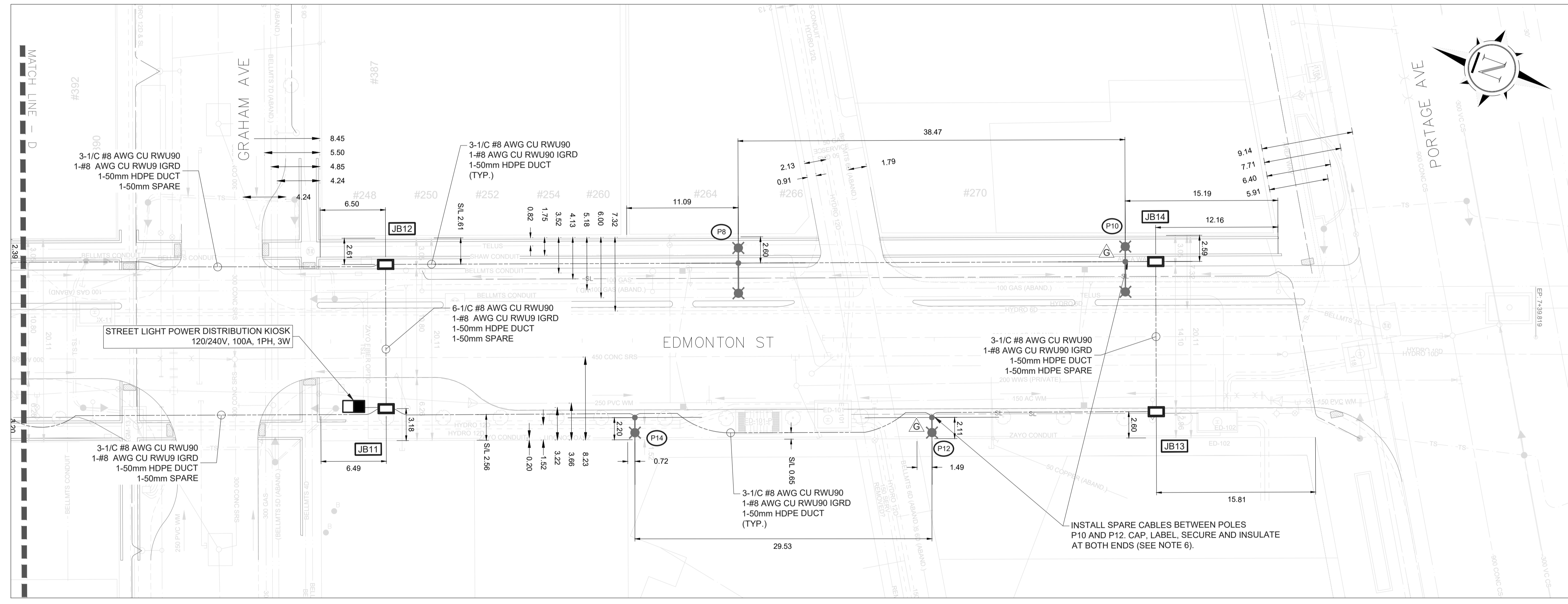
PREPARED FOR: PREPARED BY:



DESCRIPTION: EDMONTON-PORTAGE TO BROADWAY STREETLIGHTS

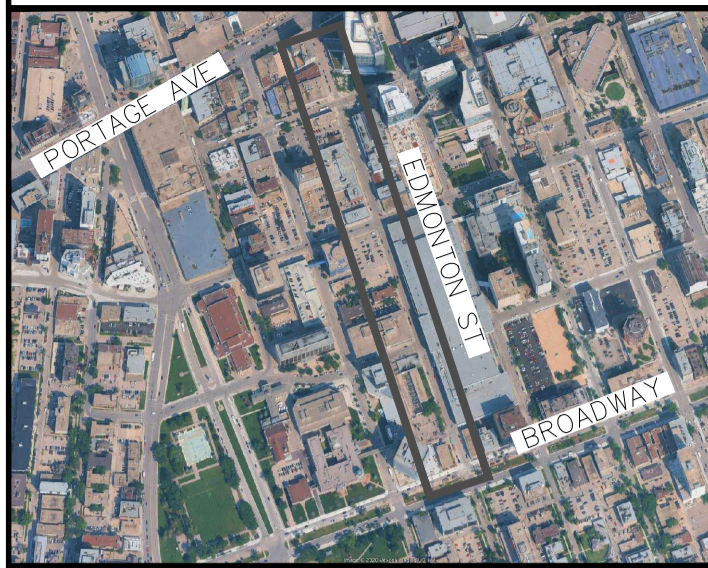
LOCATION: EDMONTON ST WINNIPEG, MB

DESIGNED BY: A.M.	DATE: 2026-02-13
DRAWN BY: M.M.	SIZE: ISO_A1
CONTRACTOR'S REFERENCE NO.: 0019930	SCALE: 1:250
CLIENT'S PROJECT NO.:	PLAN: 3 OF 5



PLAN  
1:250

KEY MAP



AREA: EDMONTON ST  
WINNIPEG, MB

LEGEND - STREETLIGHTING:

- STREETLIGHT POWER DISTRIBUTION PANEL
- STREETLIGHT JUNCTION BOX/PULL BOX
- STREETLIGHT DUCT
- BASE MOUNTED 15FT POLE C/W PEDESTRIAN LUMINAIRE
- BASE MOUNTED 35FT POLE C/W ROADWAY LUMINAIRE
- BASE MOUNTED 35FT POLE C/W PEDESTRIAN & ROADWAY LUMINAIRE
- GROUND ROD/PLATE

GENERAL NOTES:

1. VERIFY LOCATIONS OF UTILITIES AND PROTECT AGAINST DAMAGE DURING CONSTRUCTION.
2. COORDINATE POLE FOOTING AND POWER LOCATIONS WITH CIVIL AND LANDSCAPE DRAWINGS.
3. CONDUIT TRENCH LINE IS SHOWN FOR APPROXIMATE ROUTING. CONTRACTOR SHALL CONFIRM AND COORDINATE ROUTING OF CONDUIT WITH SITE CONDITIONS.
4. WHERE CONDUITS ARE ROUTED UNDER ROADWAYS, COORDINATE DEPTH OF BURIAL WITH CITY OF WINNIPEG REQUIREMENTS AND UTILITY CROSSINGS.
5. SOME ELECTRICAL SYMBOLS ARE ENLARGED FOR CLARITY AND DO NOT REPRESENT THEIR ACTUAL SIZE.
6. REDUNDANT LOOP FEED CONDUCTORS SHALL NOT BE CONNECTED TO THE ENERGIZED OPERATION. CONNECT ONLY AS REQUIRED FOR MAINTENANCE OR RESTORATION.

ClickBefore  
YouDigMB.com

**PRELIMINARY**

NO.	DATE	REVISIONS	BY
0	2026-02-13	ISSUED FOR TENDER	A.M.

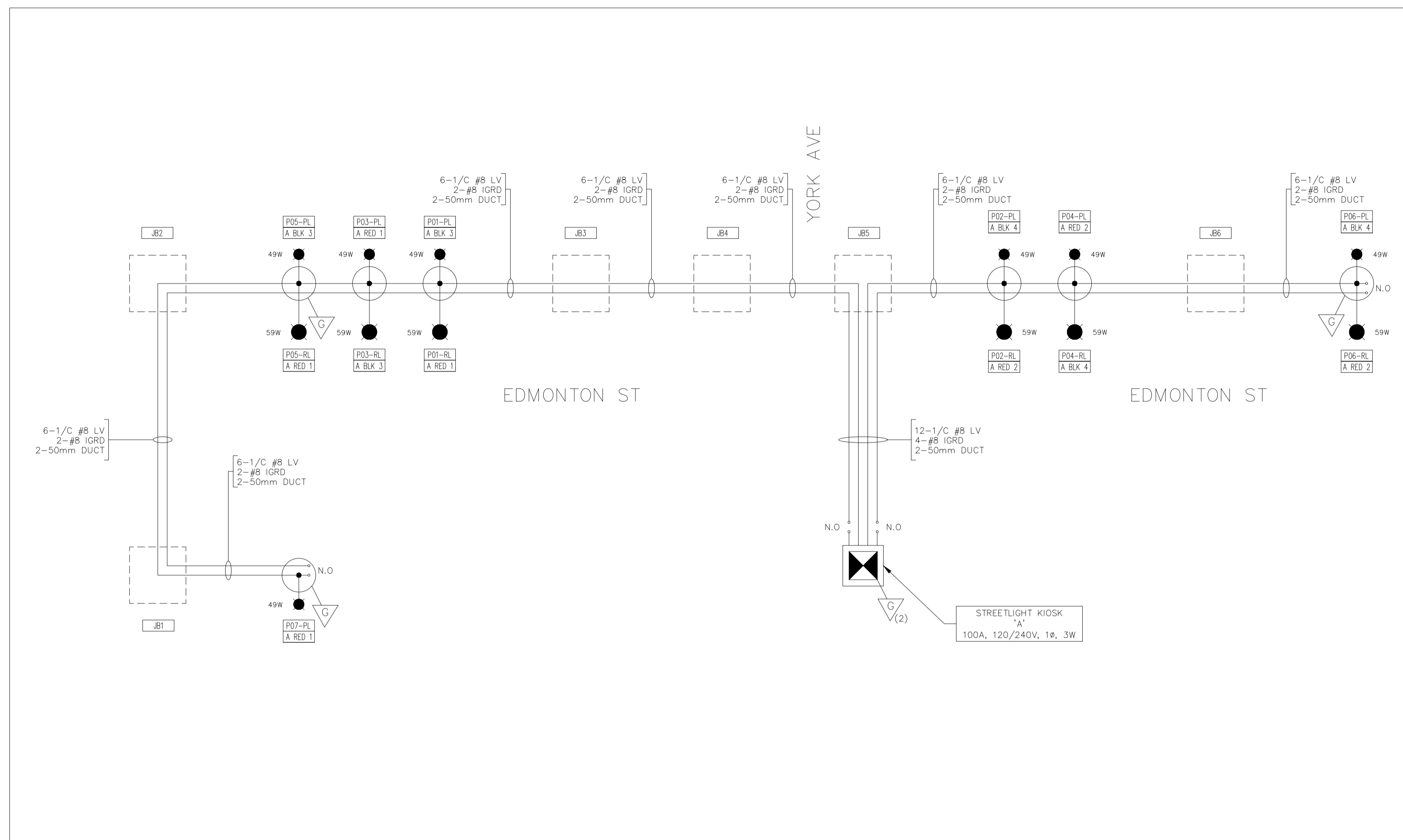
PREPARED FOR: PREPARED BY:



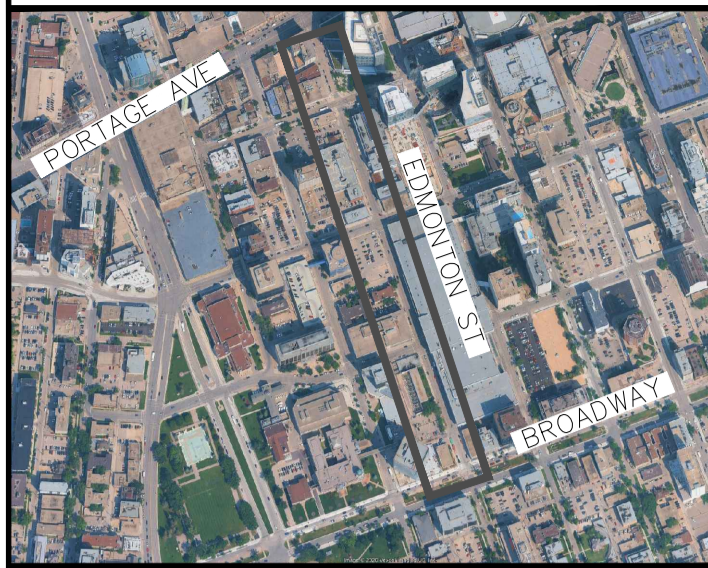
DESCRIPTION: EDMONTON-PORTAGE TO BROADWAY STREETLIGHTS

LOCATION: XXXXXXXX  
WINNIPEG, MB

DESIGNED BY: A.M.	DATE: 2026-02-13
DRAWN BY: M.M.	SIZE: ISO_A1
CONTRACTOR'S REFERENCE NO.: 0019930	SCALE: 1:250
CLIENT'S PROJECT NO.:	PLAN: 4 OF 5



KEY MAP



AREA: EDMONTON ST  
WINNIPEG, MB

LEGEND - STREETLIGHTING:

- STREETLIGHT POWER DISTRIBUTION PANEL
- STREETLIGHT JUNCTION BOX/PULL BOX
- STREETLIGHT DUCT
- BASE MOUNTED 15FT POLE C/W PEDESTRIAN LUMINAIRE
- BASE MOUNTED 35FT POLE C/W ROADWAY LUMINAIRE
- BASE MOUNTED 35FT POLE C/W PEDESTRIAN & ROADWAY LUMINAIRE
- GROUND ROD/PLATE

GENERAL NOTES:

1. VERIFY LOCATIONS OF UTILITIES AND PROTECT AGAINST DAMAGE DURING CONSTRUCTION.
2. COORDINATE POLE FOOTING AND POWER LOCATIONS WITH CIVIL AND LANDSCAPE DRAWINGS.
3. CONDUIT TRENCH LINE IS SHOWN FOR APPROXIMATE ROUTING. CONTRACTOR SHALL CONFIRM AND COORDINATE ROUTING OF CONDUIT WITH SITE CONDITIONS.
4. WHERE CONDUITS ARE ROUTED UNDER ROADWAYS, COORDINATE DEPTH OF BURIAL WITH CITY OF WINNIPEG REQUIREMENTS AND UTILITY CROSSINGS.
5. SOME ELECTRICAL SYMBOLS ARE ENLARGED FOR CLARITY AND DO NOT REPRESENT THEIR ACTUAL SIZE.
6. REDUNDANT LOOP FEED CONDUCTORS SHALL NOT BE CONNECTED TO THE ENERGIZED CIRCUIT DURING NORMAL OPERATION. CONNECT ONLY AS REQUIRED FOR MAINTENANCE OR RESTORATION.

ClickBefore  
YouDigMB.com

**PRELIMINARY**

NO.	DATE	REVISIONS	BY
0	2026-02-13	ISSUED FOR TENDER	A.M.

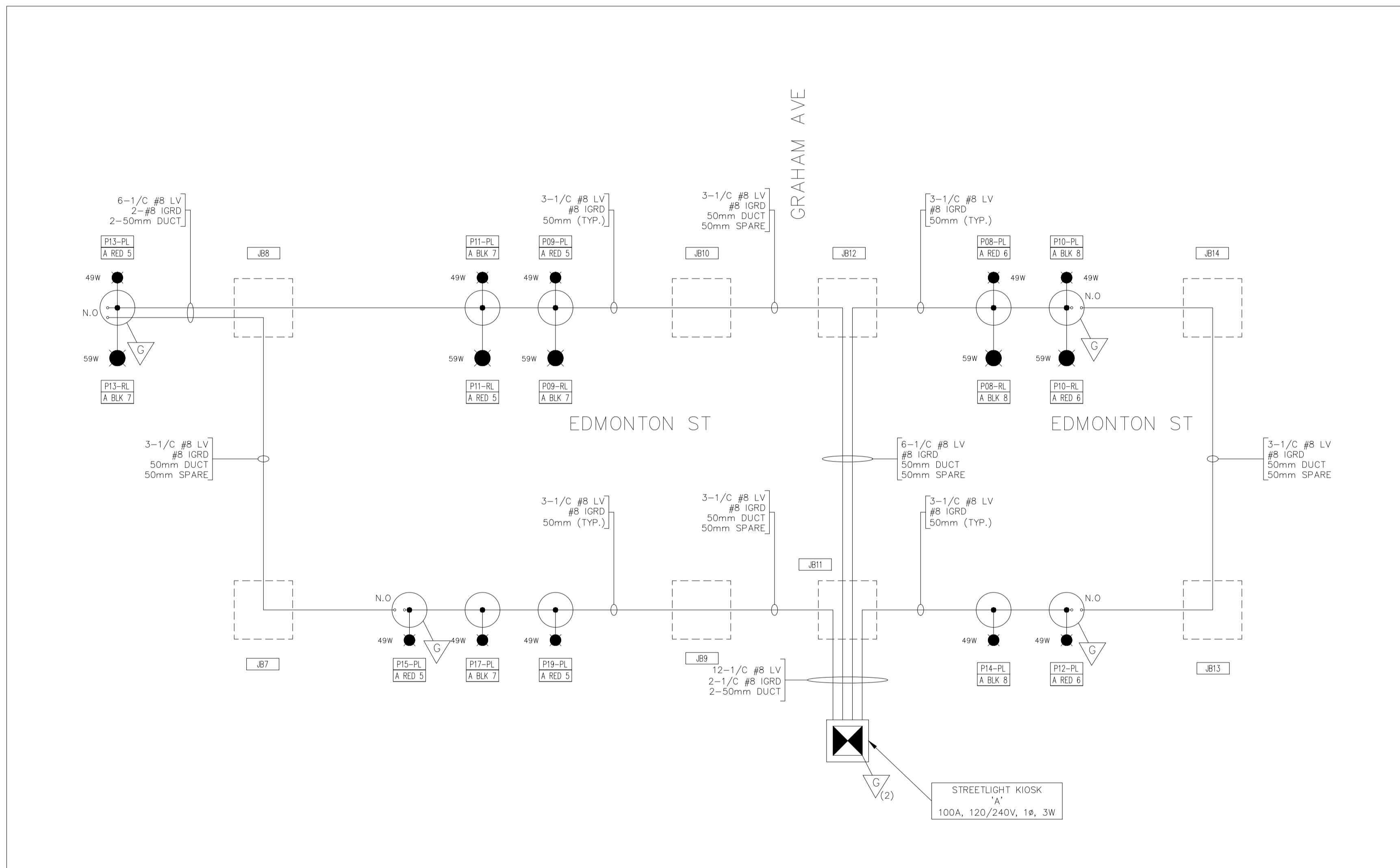
PREPARED FOR: PREPARED BY:



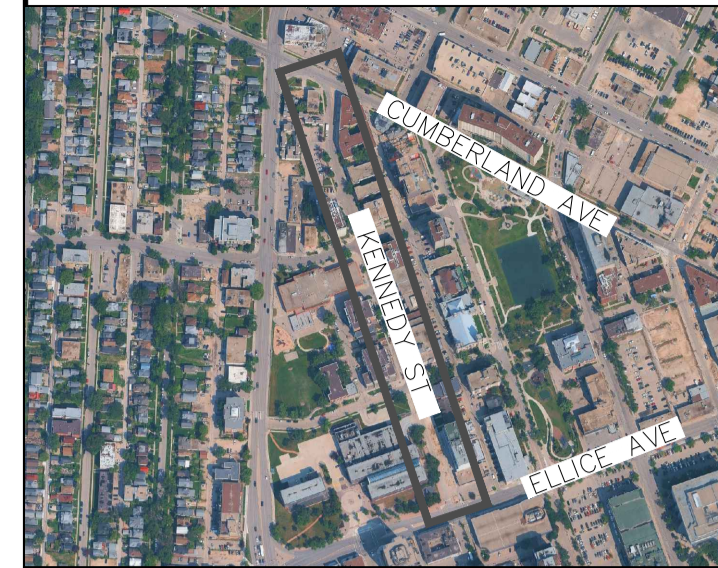
DESCRIPTION: EDMONTON-PORTAGE TO BROADWAY STREETLIGHTS

LOCATION: EDMONTON ST  
WINNIPEG, MB

DESIGNED BY: A.M.	DATE: 2026-02-13
DRAWN BY: M.M.	SIZE: ISO_A1
CONTRACTOR'S REFERENCE NO.: 0019930	SCALE: 1:250
CLIENT'S PROJECT NO.:	PLAN: 5 OF 5



KEY MAP



AREA: KENNEDY ST WINNIPEG, MB

LEGEND - STREETLIGHTING:

- STREETLIGHT POWER DISTRIBUTION PANEL
- STREETLIGHT JUNCTION BOX/PULL BOX
- STREETLIGHT DUCT
- BASE MOUNTED 15FT POLE C/W PEDESTRIAN LUMINAIRE AND RECEPTACLE
- BASE MOUNTED 35FT POLE C/W ROADWAY LUMINAIRE AND RECEPTACLE
- BASE MOUNTED 35FT POLE C/W PEDESTRIAN + ROADWAY LUMINAIRE AND RECEPTACLE
- GROUND ROD/PLATE

GENERAL NOTES:

1. VERIFY LOCATIONS OF UTILITIES AND PROTECT AGAINST DAMAGE DURING CONSTRUCTION.
2. COORDINATE POLE FOOTING AND POWER LOCATIONS WITH CIVIL AND LANDSCAPE DRAWINGS.
3. CONDUIT TRENCH LINE IS SHOWN FOR APPROXIMATE ROUTING. CONTRACTOR SHALL CONFIRM AND COORDINATE ROUTING OF CONDUIT WITH SITE CONDITIONS.
4. WHERE CONDUITS ARE ROUTED UNDER ROADWAYS, COORDINATE DEPTH OF BURIAL WITH CITY OF WINNIPEG REQUIREMENTS AND UTILITY CROSSINGS.
5. SOME ELECTRICAL SYMBOLS ARE ENLARGED FOR CLARITY AND DO NOT REPRESENT THEIR ACTUAL SIZE.
6. REDUNDANT LOOP FEED CONDUCTORS SHALL NOT BE CONNECTED TO THE ENERGIZED CIRCUIT DURING NORMAL OPERATION. CONNECT ONLY AS REQUIRED FOR MAINTENANCE OR RESTORATION.

ClickBefore YouDigMB.com

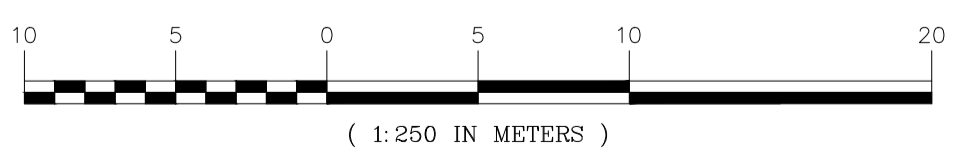
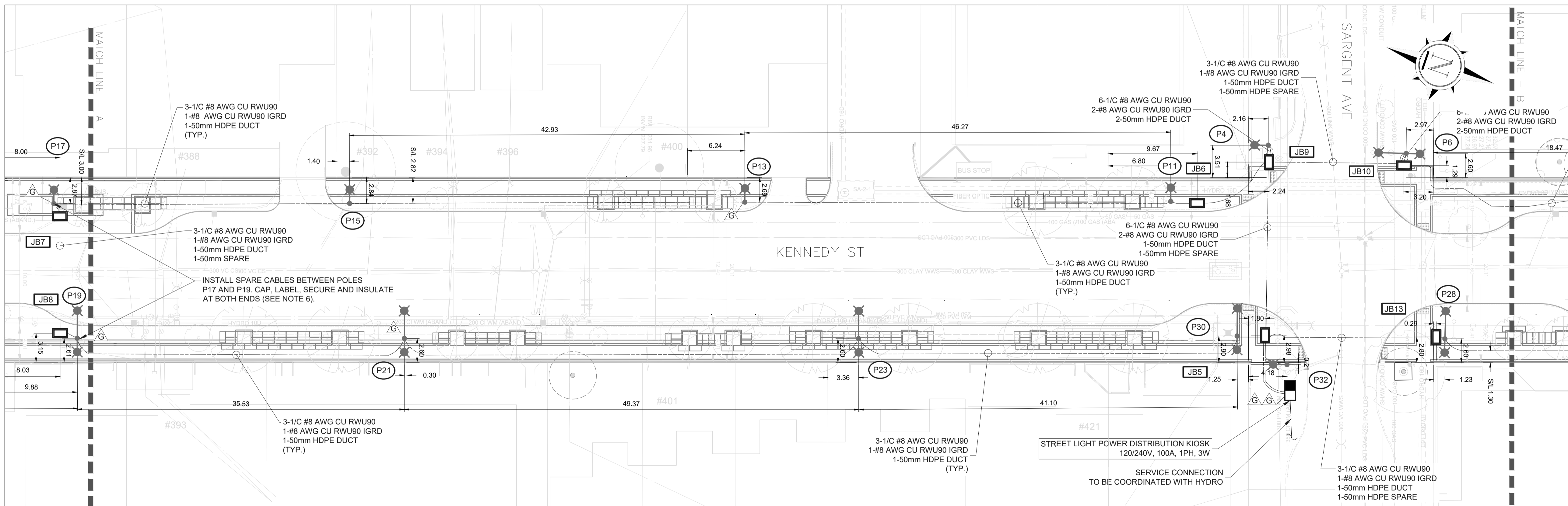
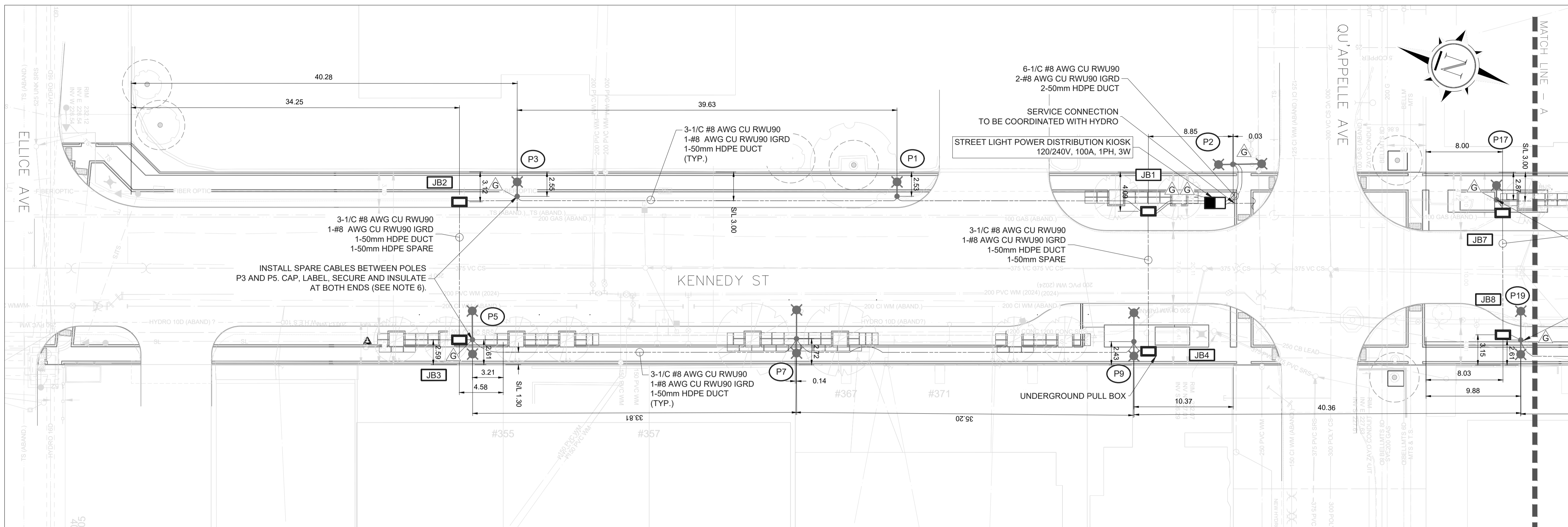
**PRELIMINARY**

NO.	DATE	REVISIONS	BY
0	2026-02-13	ISSUED FOR TENDER	A.M.

PREPARED FOR: PREPARED BY:

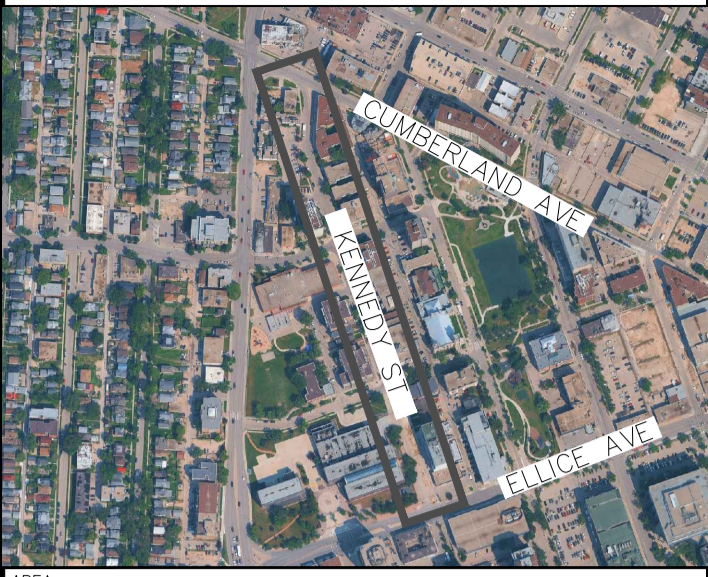


DESCRIPTION: KENNEDY-ELLICE TO CUMBERLAND STREETLIGHTS	
LOCATION: KENNEDY ST WINNIPEG, MB	
DESIGNED BY: A.M.	DATE: 2026-02-13
DRAWN BY: M.M.	SIZE: ISO_A1
CONTRACTOR'S REFERENCE NO.: 0019930	SCALE: 1:250
CLIENT'S PROJECT NO.:	PLAN: 1 OF 4



PLAN 1:250

KEY MAP



AREA: KENNEDY ST  
WINNIPEG, MB

LEGEND — STREETLIGHTING:

- STREETLIGHT POWER DISTRIBUTION PANEL
- STREETLIGHT JUNCTION BOX/PULL BOX
- STREETLIGHT DUCT
- BASE MOUNTED 15FT POLE C/W LUMINAIRE AND RECEPTACLE
- BASE MOUNTED 35FT POLE C/W ROADWAY LUMINAIRE AND RECEPTACLE
- BASE MOUNTED 35FT POLE C/W PEDESTRIAN LUMINAIRE AND RECEPTACLE
- GROUND ROD/PLATE

GENERAL NOTES:

1. VERIFY LOCATIONS OF UTILITIES AND PROTECT AGAINST DAMAGE DURING CONSTRUCTION.
2. COORDINATE POLE FOOTING AND POWER LOCATIONS WITH CIVIL AND LANDSCAPE DRAWINGS.
3. CONDUIT TRENCH LINE IS SHOWN FOR APPROXIMATE ROUTING. CONTRACTOR SHALL CONFIRM AND COORDINATE ROUTING OF CONDUIT WITH SITE CONDITIONS.
4. WHERE CONDUITS ARE ROUTED UNDER ROADWAYS, COORDINATE DEPTH OF BURIAL WITH CITY OF WINNIPEG REQUIREMENTS AND UTILITY CROSSINGS.
5. SOME ELECTRICAL SYMBOLS ARE ENLARGED FOR CLARITY AND DO NOT REPRESENT THEIR ACTUAL SIZE.
6. REDUNDANT LOOP FEED CONDUCTORS SHALL NOT BE CONNECTED TO THE ENERGIZED CIRCUIT DURING NORMAL OPERATION. CONNECT ONLY AS REQUIRED FOR MAINTENANCE OR RESTORATION.



**PRELIMINARY**

NO.	DATE	REVISIONS	BY
0	2026-02-13	ISSUED FOR TENDER	A.J.M.

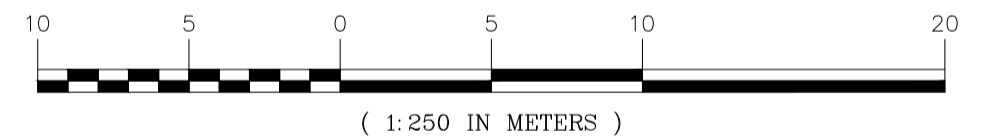
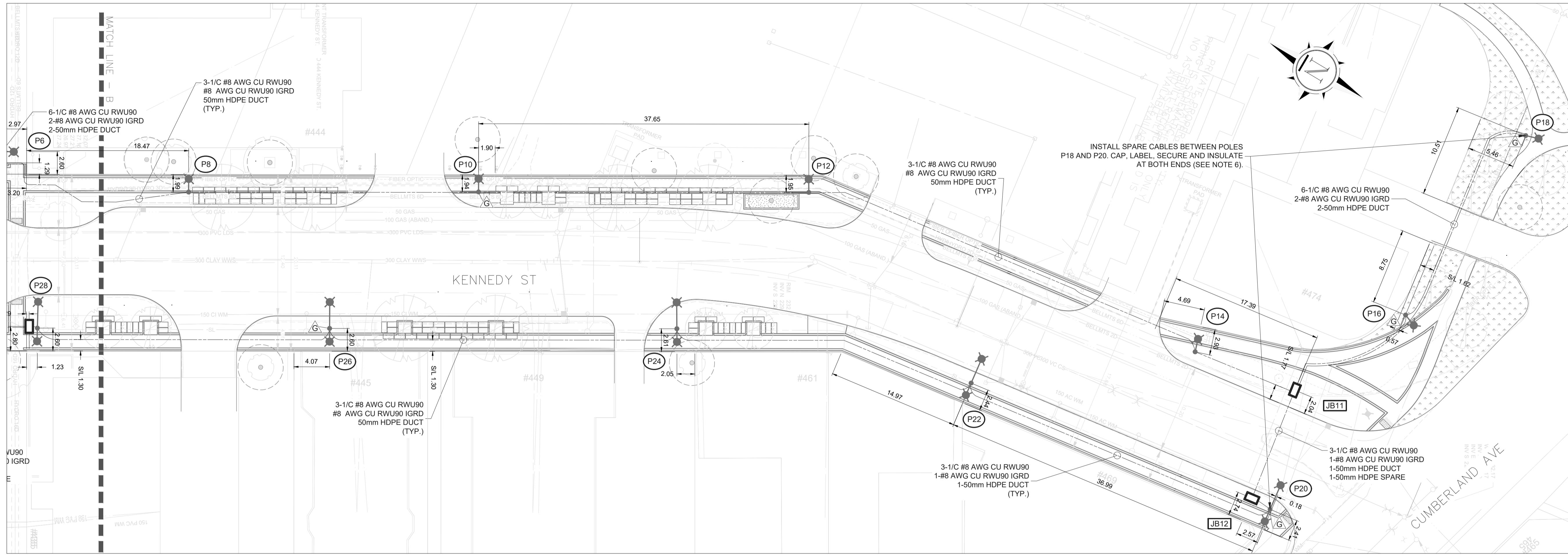
PREPARED FOR: PREPARED BY:



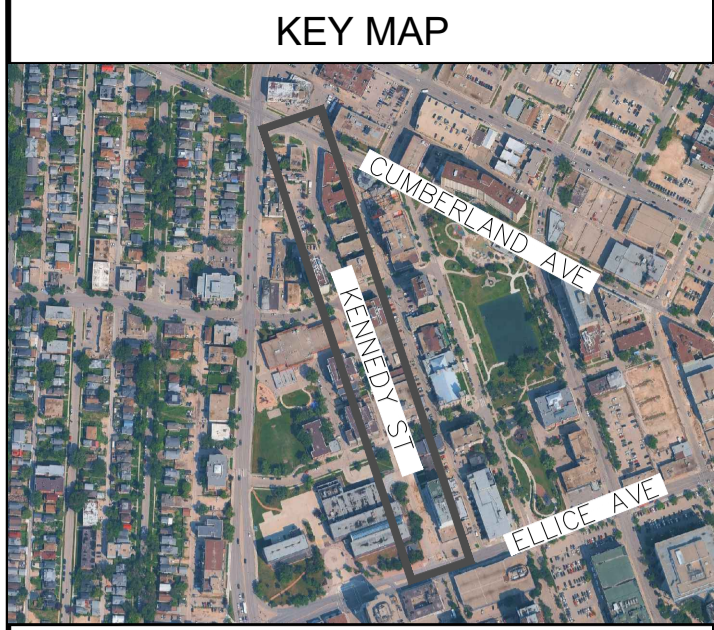
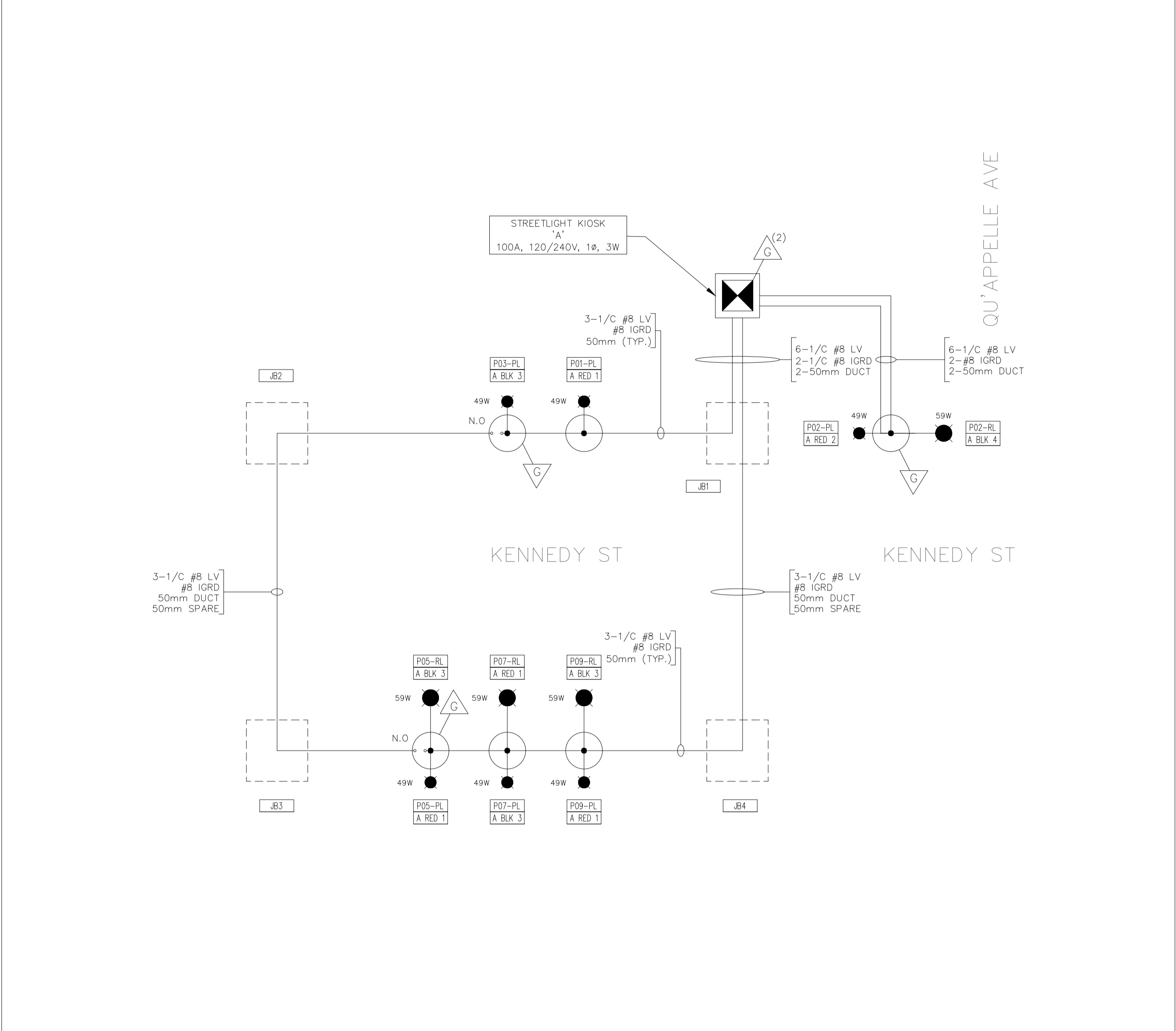
DESCRIPTION: KENNEDY-ELLICE TO CUMBERLAND STREETLIGHTS

LOCATION: KENNEDY ST  
WINNIPEG, MB

DESIGNED BY: A.J.M.	DATE: 2026-02-13
DRAWN BY: M.J.M.	SIZE: ISO_A1
CONTRACTOR'S REFERENCE NO.: 0019930	SCALE: 1:250
CLIENT'S PROJECT NO.:	PLAN: 2 OF 4



PLAN  
1:250



AREA: KENNEDY ST WINNIPEG, MB

LEGEND - STREETLIGHTING:

- STREETLIGHT POWER DISTRIBUTION PANEL
- STREETLIGHT JUNCTION BOX/PULL BOX
- STREETLIGHT DUCT
- BASE MOUNTED 15FT POLE C/W PEDESTRIAN LUMINAIRE
- BASE MOUNTED 35FT POLE C/W ROADWAY LUMINAIRE
- BASE MOUNTED 35FT POLE C/W PEDESTRIAN & ROADWAY LUMINAIRE
- GROUND ROD/PLATE

GENERAL NOTES:

1. VERIFY LOCATIONS OF UTILITIES AND PROTECT AGAINST DAMAGE DURING CONSTRUCTION.
2. COORDINATE POLE FOOTING AND POWER LOCATIONS WITH CIVIL AND LANDSCAPE DRAWINGS.
3. CONDUIT TRENCH LINE IS SHOWN FOR APPROXIMATE ROUTING. CONTRACTOR SHALL CONFIRM AND COORDINATE ROUTING OF CONDUIT WITH SITE CONDITIONS.
4. WHERE CONDUITS ARE ROUTED UNDER ROADWAYS, COORDINATE DEPTH OF BURIAL WITH CITY OF WINNIPEG REQUIREMENTS AND UTILITY CROSSINGS.
5. SOME ELECTRICAL SYMBOLS ARE ENLARGED FOR CLARITY AND DO NOT REPRESENT THEIR ACTUAL SIZE.
6. REDUNDANT LOOP FEED CONDUCTORS SHALL NOT BE CONNECTED TO THE ENERGIZED CIRCUIT DURING NORMAL OPERATION. CONNECT ONLY AS REQUIRED FOR MAINTENANCE OR RESTORATION.



**PRELIMINARY**

NO.	DATE	REVISIONS	BY
0	2026-02-13	ISSUED FOR TENDER	A.M.

PREPARED FOR: PREPARED BY:

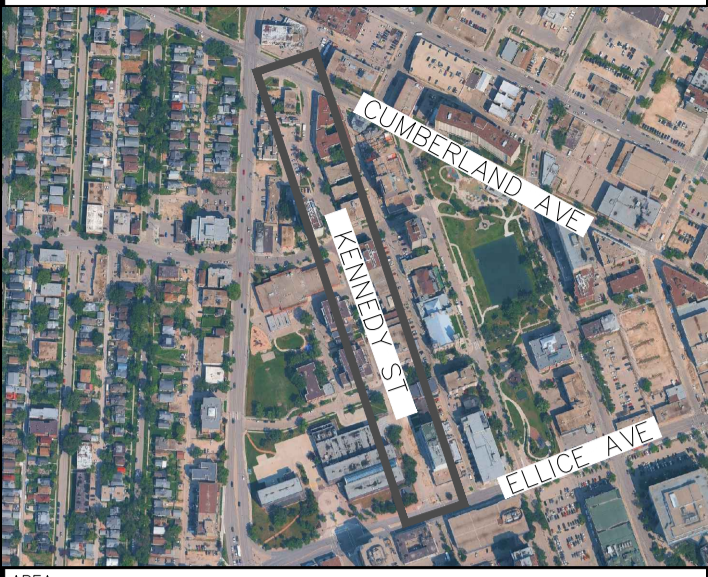


DESCRIPTION: KENNEDY-ELlice TO CUMBERLAND STREETLIGHTS

LOCATION: KENNEDY ST WINNIPEG, MB

DESIGNED BY: A.M.	DATE: 2026-02-13
DRAWN BY: M.M.	SIZE: ISO_A1
CONTRACTOR'S REFERENCE NO.: 0019930	SCALE: 1:250
CLIENT'S PROJECT NO.:	PLAN: 3 OF 4

KEY MAP



AREA: KENNEDY ST WINNIPEG, MB

LEGEND — STREETLIGHTING:

- STREETLIGHT POWER DISTRIBUTION PANEL
- STREETLIGHT JUNCTION BOX/PULL BOX
- STREETLIGHT DUCT
- BASE MOUNTED 15FT POLE C/W PEDESTRIAN LUMINAIRE
- BASE MOUNTED 35FT POLE C/W ROADWAY LUMINAIRE
- BASE MOUNTED 35FT POLE C/W PEDESTRIAN & ROADWAY LUMINAIRE
- GROUND ROD/PLATE

GENERAL NOTES:

1. VERIFY LOCATIONS OF UTILITIES AND PROTECT AGAINST DAMAGE DURING CONSTRUCTION.
2. COORDINATE POLE FOOTING AND POWER LOCATIONS WITH CIVIL AND LANDSCAPE DRAWINGS.
3. CONDUIT TRENCH LINE IS SHOWN FOR APPROXIMATE ROUTING. CONTRACTOR SHALL CONFIRM AND COORDINATE ROUTING OF CONDUIT WITH SITE CONDITIONS.
4. WHERE CONDUITS ARE ROUTED UNDER ROADWAYS, COORDINATE DEPTH OF BURIAL WITH CITY OF WINNIPEG REQUIREMENTS AND UTILITY CROSSINGS.
5. SOME ELECTRICAL SYMBOLS ARE ENLARGED FOR CLARITY AND DO NOT REPRESENT THEIR ACTUAL SIZE.
6. REDUNDANT LOOP FEED CONDUCTORS SHALL NOT BE CONNECTED TO THE ENERGIZED CIRCUIT DURING NORMAL OPERATION. CONNECT ONLY AS REQUIRED FOR MAINTENANCE OR RESTORATION.



**PRELIMINARY**

NO.	DATE	REVISIONS	BY
0	2026-02-13	ISSUED FOR TENDER	A.M.

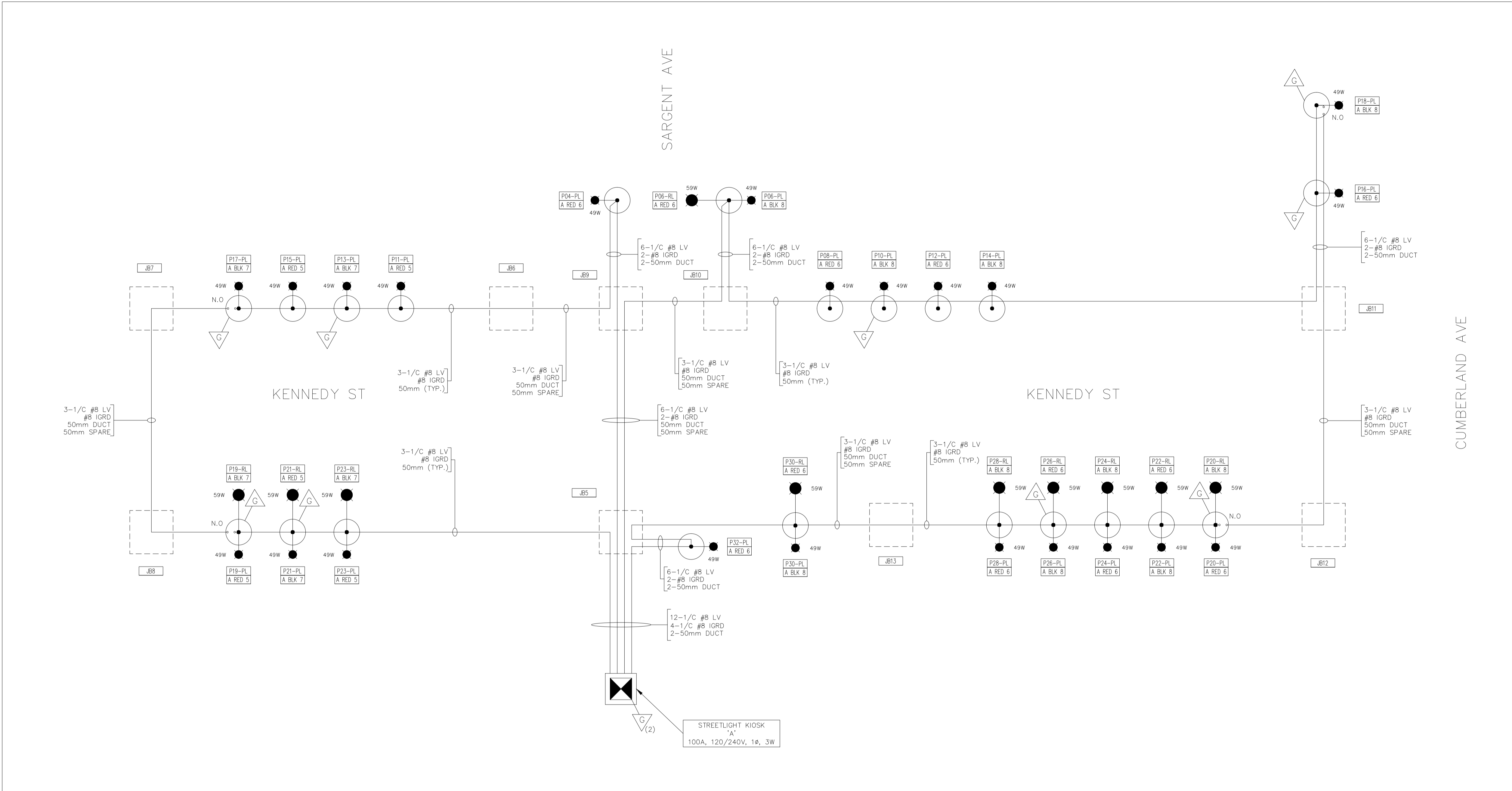
PREPARED FOR: PREPARED BY:

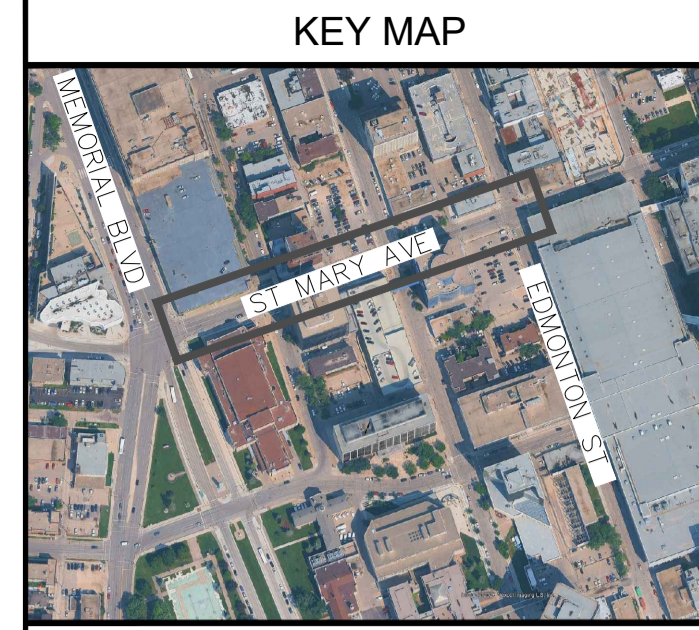
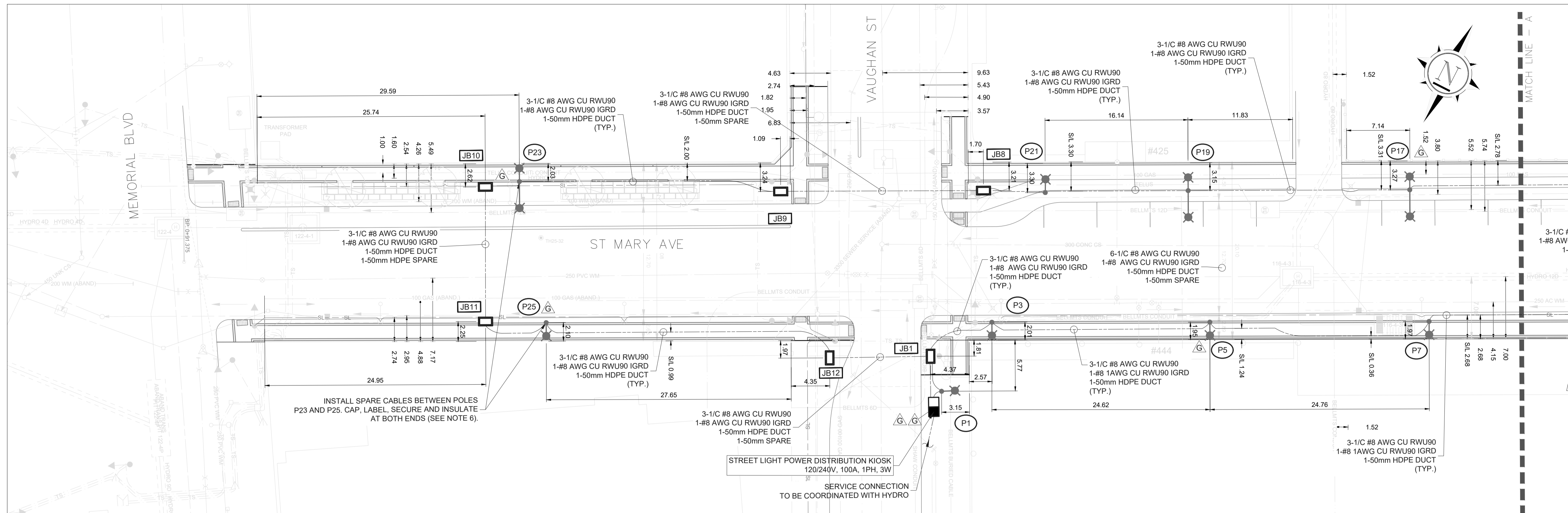


DESCRIPTION: KENNEDY-ELLICE TO CUMBERLAND STREETLIGHTS

LOCATION: KENNEDY ST WINNIPEG, MB

DESIGNED BY: A.M.	DATE: 2026-02-13
DRAWN BY: M.M.	SIZE: ISO_A1
CONTRACTOR'S REFERENCE NO.: 0019930	SCALE: 1:250
CLIENT'S PROJECT NO.:	PLAN: 4 OF 4





ST MARY AVE  
WINNIPEG, MB

LEGEND - STREETLIGHTING:

- STREETLIGHT POWER DISTRIBUTION PANEL
- STREETLIGHT JUNCTION BOX/PULL BOX
- STREETLIGHT DUCT
- BASE MOUNTED 15FT POLE C/W PEDESTRIAN LUMINAIRE AND RECEPTACLE
- BASE MOUNTED 35FT POLE C/W ROADWAY LUMINAIRE AND RECEPTACLE
- BASE MOUNTED 35FT POLE C/W PEDESTRIAN + ROADWAY LUMINAIRE AND RECEPTACLE
- GROUND ROD/PLATE

GENERAL NOTES:

1. VERIFY LOCATIONS OF UTILITIES AND PROTECT AGAINST DAMAGE DURING CONSTRUCTION.
2. COORDINATE POLE FOOTING AND POWER LOCATIONS WITH CIVIL AND LANDSCAPE DRAWINGS.
3. CONDUIT TRENCH LINE IS SHOWN FOR APPROXIMATE ROUTING. CONTRACTOR SHALL CONFIRM AND COORDINATE ROUTING OF CONDUIT WITH SITE CONDITIONS.
4. WHERE CONDUITS ARE ROUTED UNDER ROADWAYS, COORDINATE DEPTH OF BURIAL WITH CITY OF WINNIPEG REQUIREMENTS AND UTILITY CROSSINGS.
5. SOME ELECTRICAL SYMBOLS ARE ENLARGED FOR CLARITY AND DO NOT REPRESENT THEIR ACTUAL SIZE.
6. REDUNDANT LOOP FEED CONDUCTORS SHALL NOT BE CONNECTED TO THE ENERGIZED CIRCUIT DURING NORMAL OPERATION. CONNECT ONLY AS REQUIRED FOR MAINTENANCE OR RESTORATION.



**PRELIMINARY**

NO.	DATE	REVISIONS	BY
0	2026-02-13	ISSUED FOR TENDER	W.H.

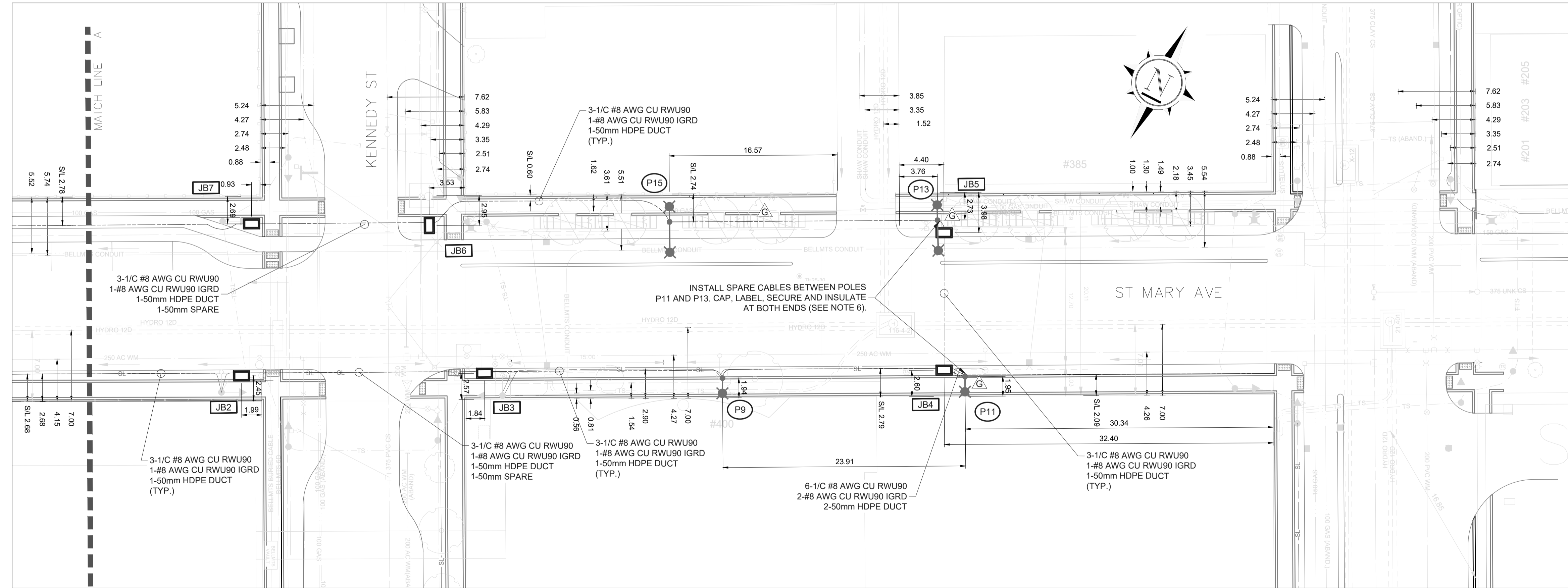
PREPARED FOR: PREPARED BY:



DESCRIPTION: ST MARY-EDMONTON-VAUGHAN STREETLIGHTS

LOCATION: ST MARY AVE WINNIPEG, MB

DESIGNED BY: W.H.	DATE: 2026-02-13
DRAWN BY: M.M.	SIZE: ISO_A1
CONTRACTOR'S REFERENCE NO.: 0019930	SCALE: 1:250
CLIENT'S PROJECT NO.:	PLAN: 1 OF 2



PLAN  
1:250

KEY MAP



AREA  
ST MARY AVE  
WINNIPEG, MB

LEGEND - STREETLIGHTING:

- STREETLIGHT POWER DISTRIBUTION PANEL
- STREETLIGHT JUNCTION BOX/PULL BOX
- STREETLIGHT DUCT
- BASE MOUNTED 15FT POLE C/W PEDESTRIAN LUMINAIRE
- BASE MOUNTED 35FT POLE C/W ROADWAY LUMINAIRE
- BASE MOUNTED 35FT POLE C/W PEDESTRIAN & ROADWAY LUMINAIRE
- GROUND ROD/PLATE

GENERAL NOTES:

1. VERIFY LOCATIONS OF UTILITIES AND PROTECT AGAINST DAMAGE DURING CONSTRUCTION.
2. COORDINATE POLE FOOTING AND POWER LOCATIONS WITH CIVIL AND LANDSCAPE DRAWINGS.
3. CONDUIT TRENCH LINE IS SHOWN FOR APPROXIMATE ROUTING. CONTRACTOR SHALL CONFIRM AND COORDINATE ROUTING OF CONDUIT WITH SITE CONDITIONS.
4. WHERE CONDUITS ARE ROUTED UNDER ROADWAYS, COORDINATE DEPTH OF BURIAL WITH CITY OF WINNIPEG REQUIREMENTS AND UTILITY CROSSINGS.
5. SOME ELECTRICAL SYMBOLS ARE ENLARGED FOR CLARITY AND DO NOT REPRESENT THEIR ACTUAL SIZE.
6. REDUNDANT LOOP FEED CONDUCTORS SHALL NOT BE CONNECTED TO THE ENERGIZED CIRCUIT DURING NORMAL OPERATION. CONNECT ONLY AS REQUIRED FOR MAINTENANCE OR RESTORATION.



**PRELIMINARY**

NO.	DATE	REVISIONS	BY
0	2026-02-13	ISSUED FOR TENDER	W.H.

PREPARED FOR: \_\_\_\_\_ PREPARED BY: \_\_\_\_\_



DESCRIPTION: ST MARY-EDMONTON-VAUGHAN STREETLIGHTS

LOCATION: ST MARY AVE  
WINNIPEG, MB

DESIGNED BY: W.H.	DATE: 2026-02-13
DRAWN BY: M.M.	SIZE: ISO_A1
CONTRACTOR'S REFERENCE NO.: 0019930	SCALE: 1:250
CLIENT'S PROJECT NO.:	PLAN: 2 OF 2

