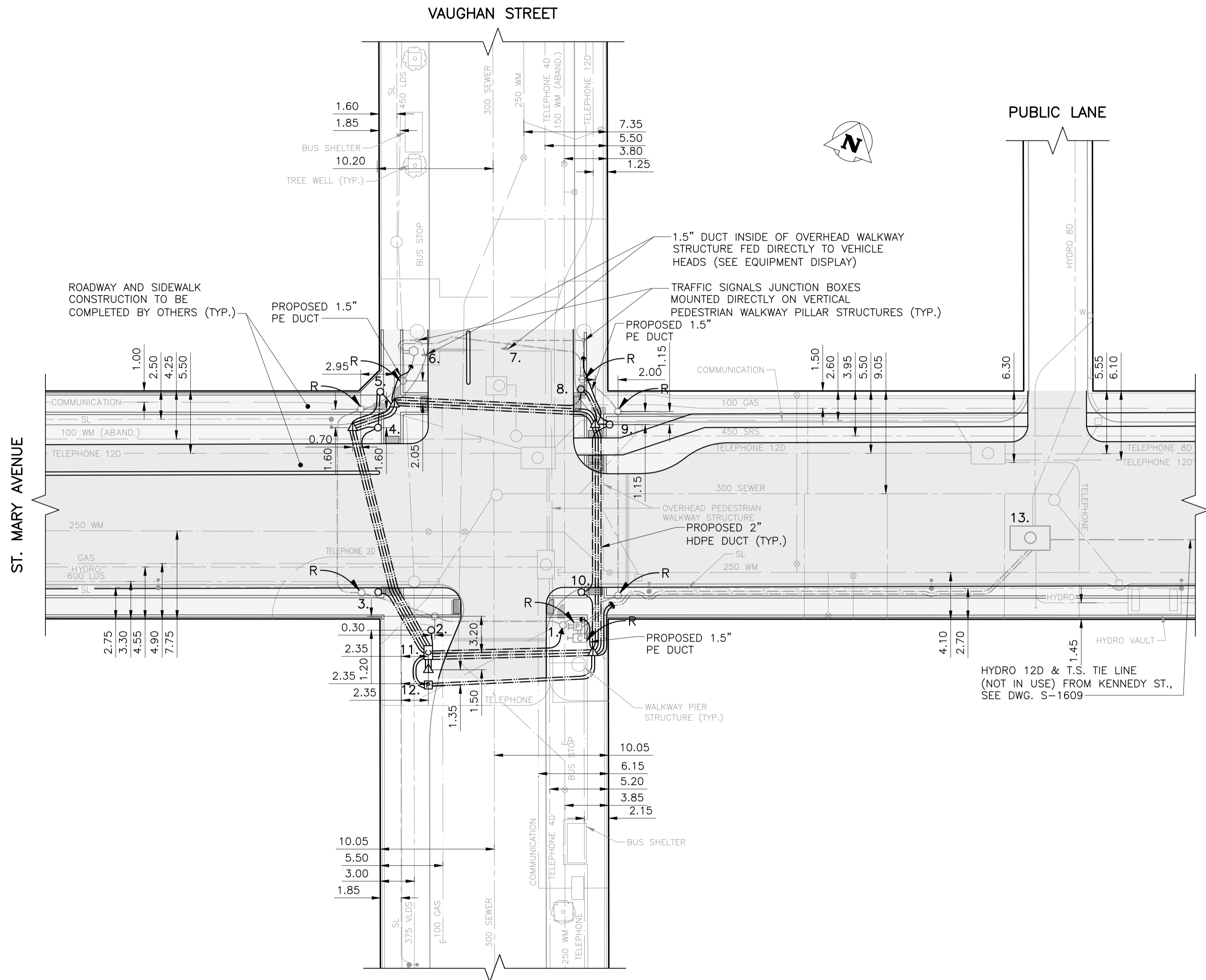


APPENDIX 'N'

**TRAFFIC SIGNALS
PRELIMINARY DRAWINGS**

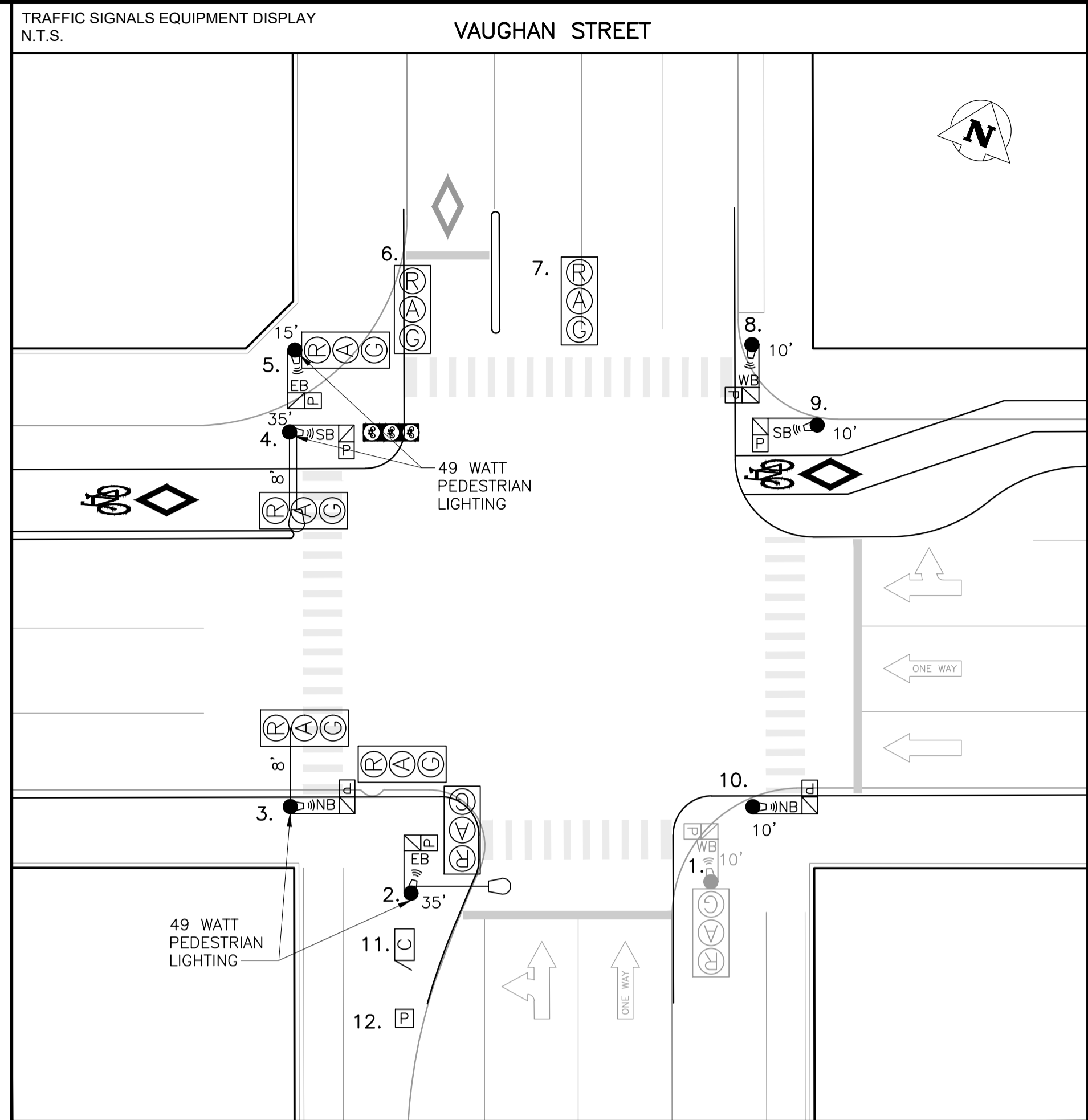
CONSTRUCTION NOTES:

- PROJECT SCOPE**
1. INSTALL CONDUIT, BASES AND PITS AS SHOWN.
 2. TOTAL LENGTH OF SERVICE CABLE: XXm.
 3. INSTALL EQUIPMENT AS SHOWN.
 4. TIMINGS REQUIRED.
- PROJECT COORDINATION**
1. COORDINATE WORK WITH MARK VOGT, (204) 962-2320.



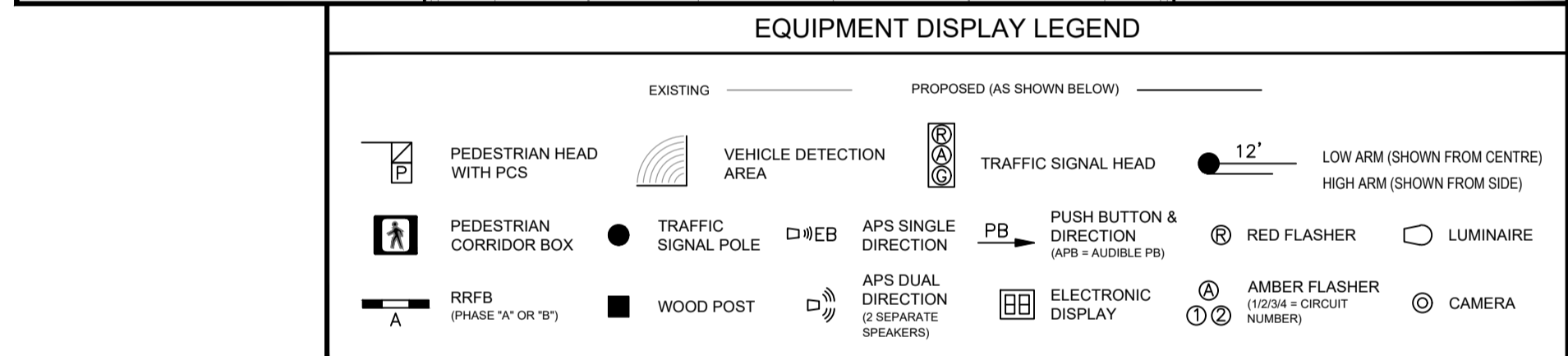
PLAN VIEW: UNDERGROUND CONSTRUCTION

1:250



ST. MARY AVENUE

VAUGHAN STREET



NO.	EQUIPMENT LIST	ARM	BASE	B.B.	NO.	EQUIPMENT LIST	ARM	BASE	B.B.
1.	10' SIGNAL & 49 WATT PEDESTRIAN LIGHTING		A	A	7.	MOUNTED ON S. SIDE OF OVERHEAD WALKWAY STRUCT.			
2.	35' SIGNAL FOR 90 WATT (9000 LUMEN) LUMINAIRE & 49 WATT PEDESTRIAN LIGHTING		OD	DD	8.	10' SIGNAL		G	G
3.	CANTILEVER & 49 WATT PEDESTRIAN LIGHTING	8'	OD	DC	9.	10' SIGNAL		G	G
4.	35' SIGNAL FOR 240 WATT (22000 LUMEN) LUMINAIRE & 49 WATT PEDESTRIAN LIGHTING	8'	OD	DD	10.	10' SIGNAL		G	G
5.	10' SIGNAL & 49 WATT PEDESTRIAN LIGHTING		G	G	11.	332 CABINET/170 CONTROLLER			
6.	MOUNTED ON UNDERSIDE OF OVERHEAD WALKWAY STRUCT.				12.	DISCONNECT PEDESTAL			
					13.	HYDRO_MH #116-4-3 SERVICE: T.S. TIE LINE EAST			

INTERNAL REVIEW			
TIMINGS (INITIAL):	NEW TIMINGS?	DATE	INITIALS
TIMINGS (PRE-FC):	NEW TIMINGS?	DATE	INITIALS
OPERATIONS:	DAYS REQUIRED	DATE	INITIALS
UNDERGROUND CONSTRUCTABILITY:	DAYS REQUIRED	DATE	INITIALS
LAB:	REQUIRE FC DWG?	DAYS REQUIRED	DATE
TMC:		DATE	INITIALS
STREET LIGHTING:		DATE	INITIALS
TRAFFIC MANAGEMENT:		DATE	INITIALS

TRAFFIC SIGNALS UNDERGROUND LEGEND		SIGNAL BASE BOLT SQUARE TYPES	
EXISTING	PROPOSED (AS SHOWN BELOW)	BOLT SQUARE (B.S.) DIA.	
ABANDONED	DISCONNECTED (LOOPS ONLY)	TYPE "A" - 8 1/8"	
1 1/2" PE CONDUIT	POLE BASE	TYPE "B" - 6 3/4"	
2" PE CONDUIT	WOOD POST	TYPE "C" - 8 1/8" SCREW TYPE	
4" PVC CONDUIT	CONTROLLER BASE	TYPE "D" - 12 3/4" x 1 1/4" DIA. BOLTS, 24" DIA.	
AERIAL / BURIED CABLE	PEDESTAL BASE	TYPE "E" - 12 3/4" x 1 1/4" DIA. BOLTS, 28" DIA.	
CONDUIT STUB	TERMINAL BASE	TYPE "F" - 9 9/16" SCREW TYPE	
BREAK-IN	SERVICE BOX (PIT)	TYPE "G" - 8 1/8" x 1 1/4" DIA. BOLTS, 89mm PROJ.	
SPICE	24" PRECAST PIT	TYPE "H" - 8 1/8" x 1 1/4" DIA. BOLTS, 76mm PROJ.	
SAW-CUT LOOPS	30" PRECAST PIT	TYPE "I" - 9 7/8" SCREW TYPE	
PERFORMED LOOPS	36" PRECAST PIT	TYPE "J" - 10 5/8" x 1 1/4" DIA. BOLTS	
	REMOVAL	TYPE "K" - 10 5/8" x 1 1/4" DIA. BOLTS	
		TYPE "L" - 6" x 5/8" DIA. BOLTS	
		TYPE "M" - 8 1/8" x 5/8" DIA. BOLTS	
		TYPE "PM" - 8 1/8" x 1 1/4" DIA. BOLTS	

EXISTING	LEGEND	PROPOSED	EXISTING	LEGEND	PROPOSED	EXISTING	LEGEND	PROPOSED
150 WM	WATERMAIN	150 WM	PROPERTY LINE	100 GAS	GAS	100 GAS	TELEPHONE	TELEPHONE
HYDRANT	HYDRANT	VALVE	SURVEY MARKER	TELEPHONE	TELEPHONE	TELEPHONE	COMMUNICATION	COMMUNICATION
SHUTOFF VALVE	SHUTOFF VALVE	SEWER	ROADWAY	COMMUNICATION	COMMUNICATION	COMMUNICATION	WOOD POLE	WOOD POLE
MANHOLE	MANHOLE	300 SEWER	SIDEWALK	COMMUNICATION	COMMUNICATION	COMMUNICATION	STREET LIGHT	STREET LIGHT
CATCH BASIN	CATCH BASIN	CURB INLET	CURB & CURB RAMP	COMMUNICATION	COMMUNICATION	COMMUNICATION	RAILWAY POLE	RAILWAY POLE
HYDRO	HYDRO	HYDRO	WARNING TILE	COMMUNICATION	COMMUNICATION	COMMUNICATION	GUY-WIRE	GUY-WIRE
			CULVERT	COMMUNICATION	COMMUNICATION	COMMUNICATION	FENCE	FENCE
			BUILDING	COMMUNICATION	COMMUNICATION	COMMUNICATION	GUARDRAIL	GUARDRAIL
			TREE	COMMUNICATION	COMMUNICATION	COMMUNICATION		

UNDERGROUND STRUCTURES		CONSTRUCTION REVISIONS	
PENDING			
UNDERGROUND STRUCTURES ID	DATE (YYYY/MM/DD)		
PENDING			
WATER & WASTE REVIEW ID			

ACCOUNTS:		ENGINEER'S SEAL:	
A.B.	PENDING		
DESIGNED BY			
A.B.			
DRAWN BY			
CHECKED BY			
A	ISSUED FOR INTERNAL REVIEW	DATE (YYYY/MM/DD)	BY
NO.	REVISION	DATE (YYYY/MM/DD)	BY

LIABILITY DISCLAIMER NOTICE:
 THE DIGITAL INFORMATION PROVIDED FOR YOUR CONVENIENCE HEREIN IS FOR USE AT YOUR OWN RISK. THE CITY OF WINNIPEG, PUBLIC WORKS DEPARTMENT, SHALL ASSUME NO RESPONSIBILITY FOR THE INFORMATION AND IT SHOULD NOT BE CONSTRUED AS ASSULT INFORMATION. THE INFORMATION SHOULD BE USED FOR PLANNING PURPOSES ONLY AND SHOULD BE VERIFIED BY SURVEY. THE DEPARTMENT SHALL NOT IN ANY WAY SUPPORT ANY LIABILITY WHATSOEVER TO ANY PARTY FOR INJURY, LOSS OR DAMAGES SUFFERED BY SUCH PARTY ARISING FROM THEIR USE OF, OR RELIANCE UPON, THIS INFORMATION.

PRELIMINARY
 NOT FOR CONSTRUCTION

THE CITY OF WINNIPEG
 PUBLIC WORKS DEPARTMENT
 TRANSPORTATION DIVISION

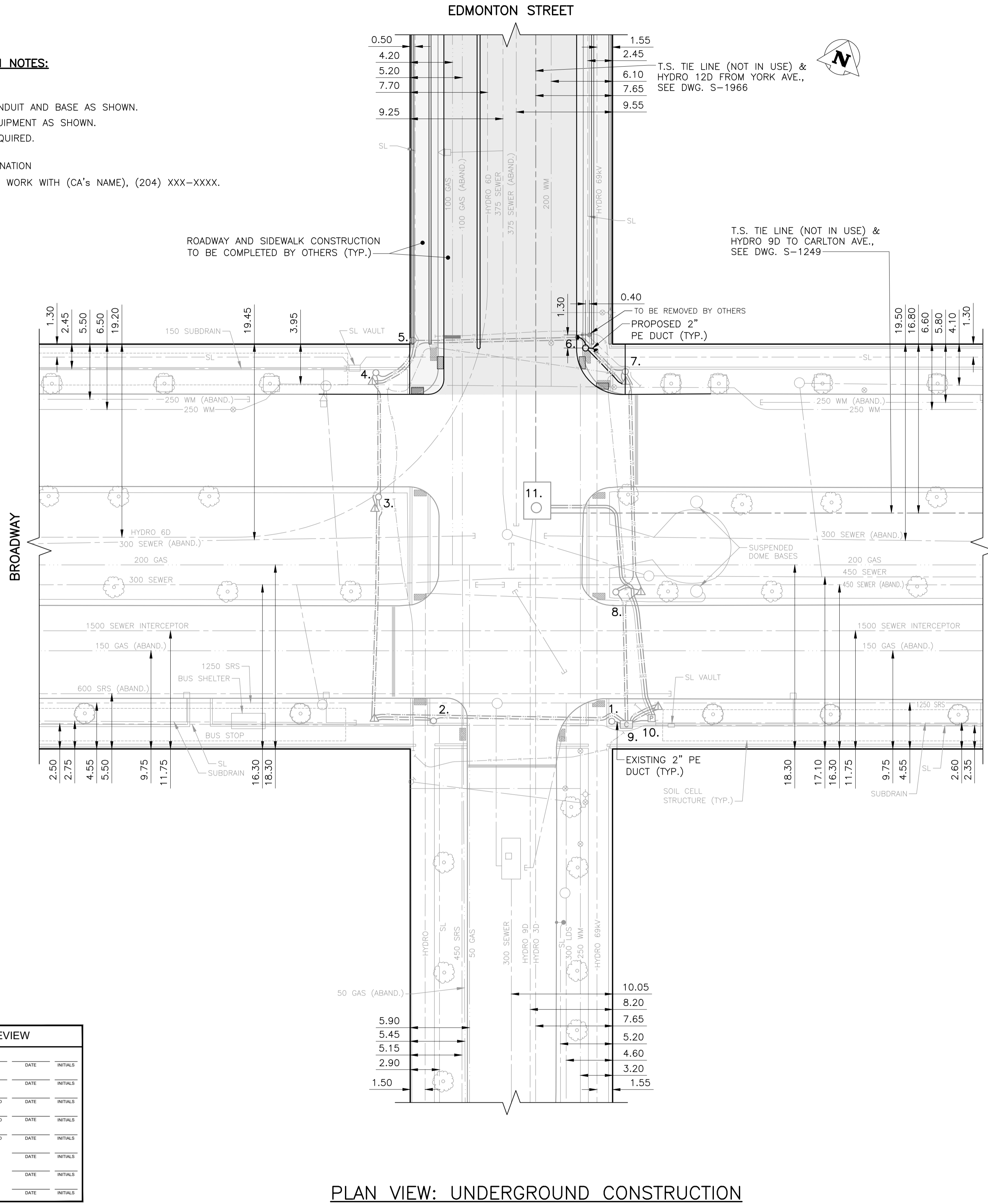
TRAFFIC SIGNALS
 ST. MARY AVE. & VAUGHAN ST.

UNITS: ALL DIMENSIONS ARE IN METERS UNLESS OTHERWISE NOTED
 DRAWING NUMBER: S-1084

CONSTRUCTION NOTES:

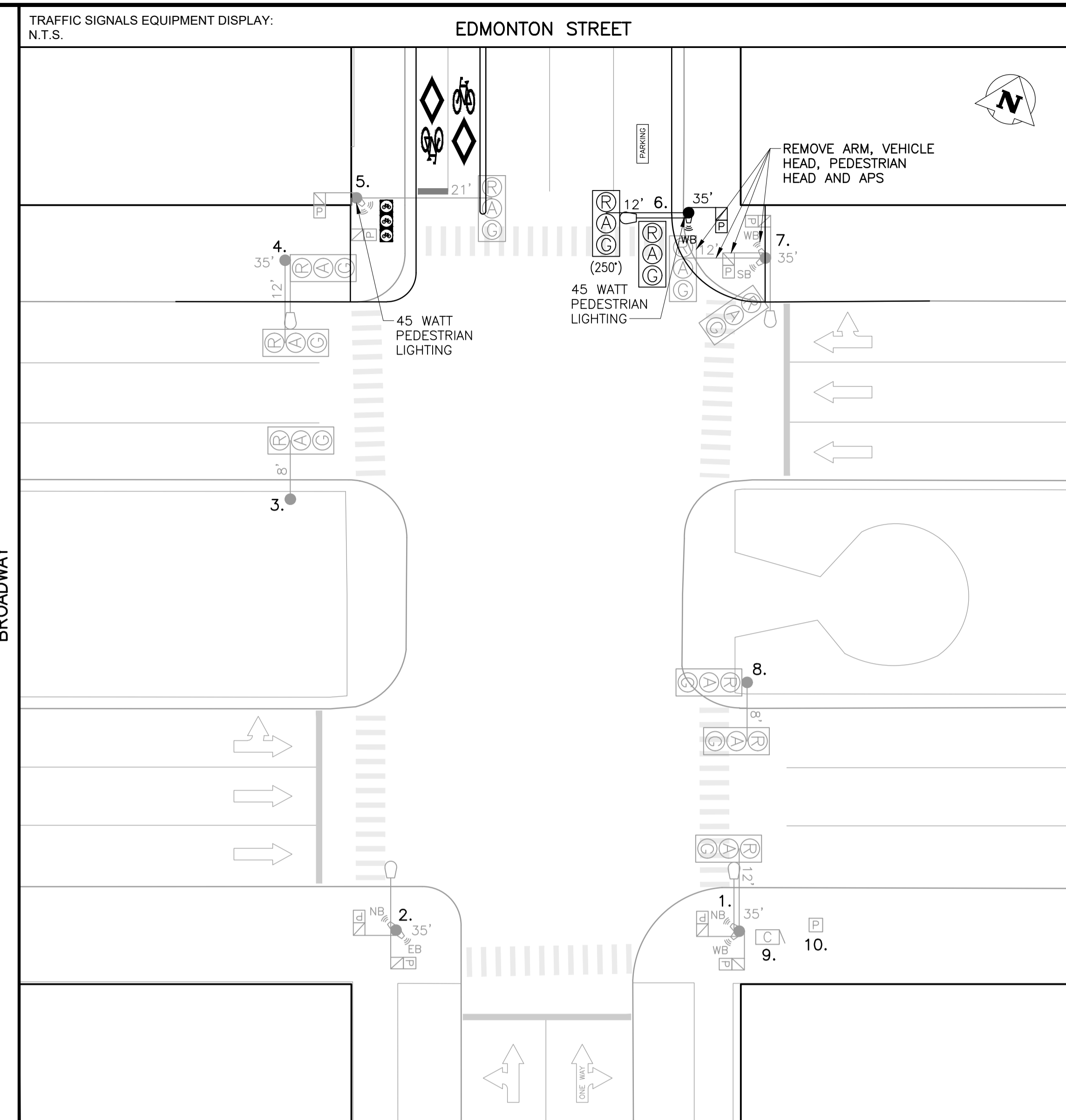
- PROJECT SCOPE**
1. INSTALL CONDUIT AND BASE AS SHOWN.
 2. INSTALL EQUIPMENT AS SHOWN.
 3. TIMINGS REQUIRED.

- PROJECT COORDINATION**
1. COORDINATE WORK WITH (CA'S NAME), (204) XXX-XXXX.



PLAN VIEW: UNDERGROUND CONSTRUCTION
1:250

INTERNAL REVIEW			
TIMINGS (INITIAL):	NEW TIMING(S)?	DATE	INITIALS
TIMINGS (PRE-FC):	NEW TIMING(S)?	DATE	INITIALS
OPERATIONS:	DAYS REQUIRED	DATE	INITIALS
UNDERGROUND CONSTRUCTABILITY:	DAYS REQUIRED	DATE	INITIALS
LAB:	REQUIRE IFC DWG?	DAYS REQUIRED	DATE
TMC:		DATE	INITIALS
STREET LIGHTING:		DATE	INITIALS
TRAFFIC MANAGEMENT:		DATE	INITIALS



EQUIPMENT DISPLAY LEGEND				TRAFFIC SIGNALS UNDERGROUND LEGEND			SIGNAL BASE BOLT SQUARE TYPES				
EXISTING	PROPOSED (AS SHOWN BELOW)	NO.	EQUIPMENT LIST	ARM	BASE	B.B.	EXISTING	PROPOSED (AS SHOWN BELOW)	DISCONNECTED (LOOPS ONLY)	BOLT SQUARE (B.S.)	DIA.
	PEDESTRIAN HEAD WITH PCS	1.	35' SIGNAL FOR 240 WATT (20000 LUMEN) LUMINAIRE	12'	OD	DD				TYPE "A" - 8 1/8"	
	PEDESTRIAN CORRIDOR BOX	2.	35' SIGNAL FOR 240 WATT (20000 LUMEN) LUMINAIRE		G	GD				TYPE "B" - 6 3/4"	
	RRFB (PHASE 'W' OR 'E')	3.	CANTILEVER	8'	OD	DC				TYPE "C" - 8 1/8" SCREW TYPE	
	VEHICLE DETECTION AREA	4.	35' SIGNAL FOR 240 WATT (20000 LUMEN) LUMINAIRE		OD	DD				TYPE "D" - 12 3/4" x 1 1/4" DIA. BOLTS, 24" DIA.	
	PUSH BUTTON & DIRECTION (APS - AUDIBLE FB)	5.	CANTILEVER FOR 45 WATT PEDESTRIAN LIGHTING	21'	G	FIXED				TYPE "E" - 8 1/8" PRECAST, 1 1/4" DIA. BOLTS, 28" DIA.	
	APS SINGLE DIRECTION (2 SEPARATE SPEAKERS)	6.	35' SIGNAL FOR 150 WATT (15000 LUMEN) LUMINAIRE & 45 WATT PEDESTRIAN LIGHTING	12'	OD	DD				TYPE "F" - 9 9/16" SCREW TYPE	
	TRAFFIC SIGNAL HEAD	7.	35' SIGNAL FOR 240 WATT (20000 LUMEN) LUMINAIRE	12'	G	GD				TYPE "G" - 8 1/8", 1 1/4" DIA. BOLTS, 89mm PROJ.	
	TRAFFIC SIGNAL POLE	8.	CANTILEVER	8'	G	GC				TYPE "H" - 8 1/8", 1 1/4" DIA. BOLTS, 76mm PROJ.	
	WOOD POST	9.	332 CABINET/170 CONTROLLER							TYPE "I" - 6", 5/8" DIA. BOLTS	
	ELECTRONIC DISPLAY	10.	DISCONNECT PEDESTAL							TYPE "J" - 9 7/8" SCREW TYPE	
	RED FLASHER	11.	HYDRO MH No. 21302 SERVICE: TIE LINE NORTH & EAST							TYPE "K" - 10 5/8", 1 1/4" DIA. BOLTS	
	AMBER FLASHER (CIRCUIT NUMBER)									TYPE "L" - 6", 5/8" DIA. BOLTS	
	LUMINAIRE									TYPE "M" - 8 1/8", 5/8" DIA. BOLTS	
	CAMERA									TYPE "N" - 8 1/8", 5/8" DIA. BOLTS	
	LOW ARM (SHOWN FROM CENTRE)										
	HIGH ARM (SHOWN FROM SIDE)										

EXISTING	LEGEND	PROPOSED	EXISTING	LEGEND	PROPOSED	EXISTING	LEGEND	PROPOSED
150 WM	WATERMAIN	150 WM	PROPERTY LINE	100 GAS	GAS	100 GAS	TELEPHONE	TELEPHONE
HYDRANT	HYDRANT	VALVE	SURVEY MARKER	COMMUNICATION	COMMUNICATION	TELEPHONE	COMMUNICATION	COMMUNICATION
SHUTOFF VALVE	SHUTOFF VALVE	SEWER	ROADWAY	WOOD POLE	WOOD POLE	STREET LIGHT	STREET LIGHT	STREET LIGHT
MANHOLE	MANHOLE	300 SEWER	SIDEWALK	RAILWAY POLE	RAILWAY POLE	GUY-WIRE	GUY-WIRE	GUY-WIRE
CATCH BASIN	CATCH BASIN	CURB INLET	CURB & CURB RAMP	FENCE	FENCE	GUARDRAIL	GUARDRAIL	GUARDRAIL
HYDRO	HYDRO	HYDRO	WARNING TILE	CULVERT	CULVERT	BUILDING	BUILDING	BUILDING
HYDRO	HYDRO	HYDRO	CULVERT	BUILDING	BUILDING	TREE	TREE	TREE

UNDERGROUND STRUCTURES	
PENDING	DATE (YYYY/MM/DD)
PENDING	
PENDING	

CONSTRUCTION REVISIONS			
NO.	REVISION	DATE (YYYY/MM/DD)	BY
A	ISSUED FOR INTERNAL REVIEW	2026/02/03	R.S.

DESIGNED BY	R.S.
DRAWN BY	R.S.
CHECKED BY	C.H.
APPROVED BY	R.S.

ACCOUNTS: WT PENDING

ENGINEER'S SEAL: PRELIMINARY NOT FOR CONSTRUCTION

THE CITY OF WINNIPEG
PUBLIC WORKS DEPARTMENT
TRANSPORTATION DIVISION

TRAFFIC SIGNALS
BROADWAY & EDMONTON ST.

UNITS: ALL DIMENSIONS ARE IN METERS UNLESS OTHERWISE NOTED

DRAWING NUMBER: S-1371