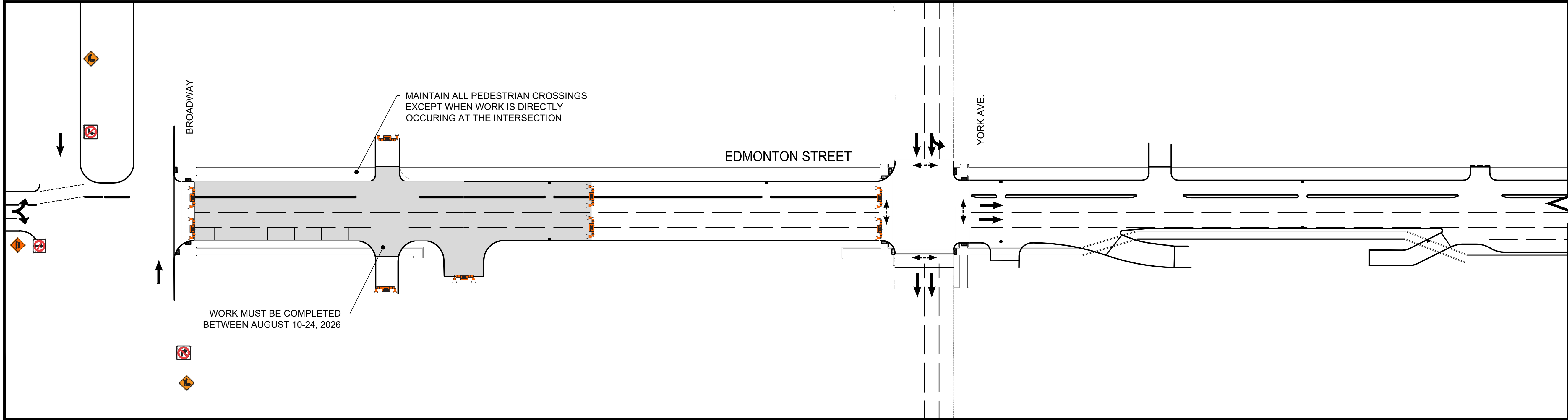


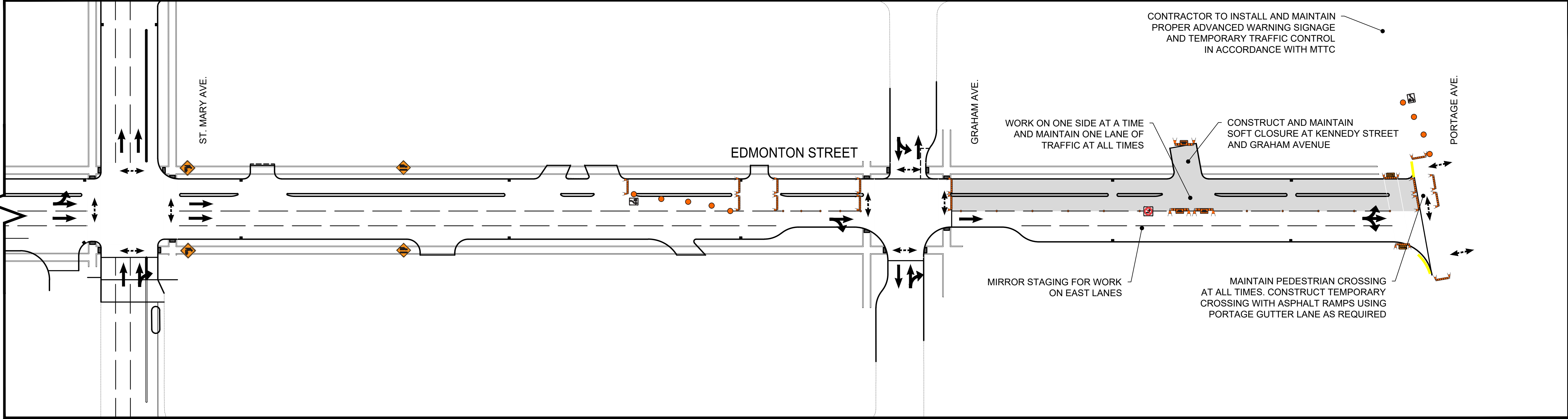
EDMONTON - PHASE 3

SCALE 1:500



EDMONTON - PHASE 3

SCALE 1:500



METRIC

WHOLE NUMBERS INDICATE MILLIMETRES
DECIMALIZED NUMBERS INDICATE METRES

FOR INFORMATION ONLY

**ENGINEERS
GEOSCIENTISTS
MANITOBA**
Certificate of Authorization
WSP Canada Inc.
No. 5750

NOTES:

1. ALL TRAFFIC SIGNAGE AND TEMPORARY TRAFFIC CONTROL TO CONFORM WITH THE LATEST REVISION OF THE CITY OF WINNIPEG MANUAL OF TEMPORARY TRAFFIC CONTROL ON CITY STREETS
2. CONTRACTOR SHALL MAINTAIN SAFE AND ACCESSIBLE PEDESTRIAN CROSSINGS. ALL CROSSINGS TO ADEQUATELY DELINEATE THE PATH OF TRAVEL FOR THOSE WITH VISUAL OR MOBILITY IMPAIRMENTS.
3. CONTRACTOR SHALL MAINTAIN ACCESS TO ALL PRIVATE APPROACHES AT ALL TIMES. REQUIRED CLOSURES OF PRIVATE APPROACHES TO BE APPROVED BY THE CONTRACT ADMINISTRATOR. CONTRACTOR TO ADVISE PROPERTY OWNERS 24 HOURS IN ADVANCE OF ANY CLOSURE.
4. CONTRACTOR TO INSTALL AND MAINTAIN SOFT CLOSURES AS REQUIRED FOR ALL SIDESTREET AND ALLEY CLOSURES DURING ALL PHASE.
5. PARKING TO BE REMOVED AT THE TIME OF CONSTRUCTION

LEGEND



PHASE 5 CONSTRUCTION



WSP Canada Inc.
1600 Buffalo Place
Winnipeg, MB R3T 6B8
t. 204.477.6650
f. 204.474.2864
www.wsp.com



THE CITY OF WINNIPEG
PUBLIC WORKS DEPARTMENT
ENGINEERING SERVICES DIVISION

**2026 DOWNTOWN PAVEMENT
RENEWALS**
EDMONTON STREET - PHASE 3
TEMPORARY TRAFFIC SIGNAGE

DRAWING NUMBER
P-3596-33

TENDER NO.
3-2026