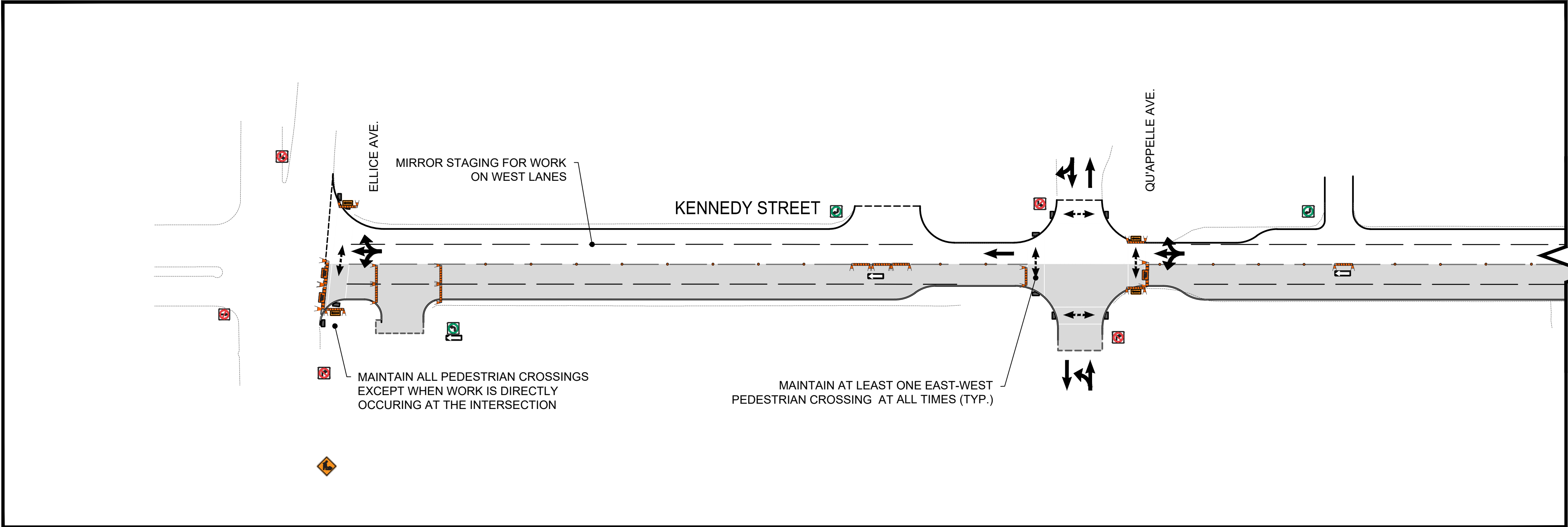
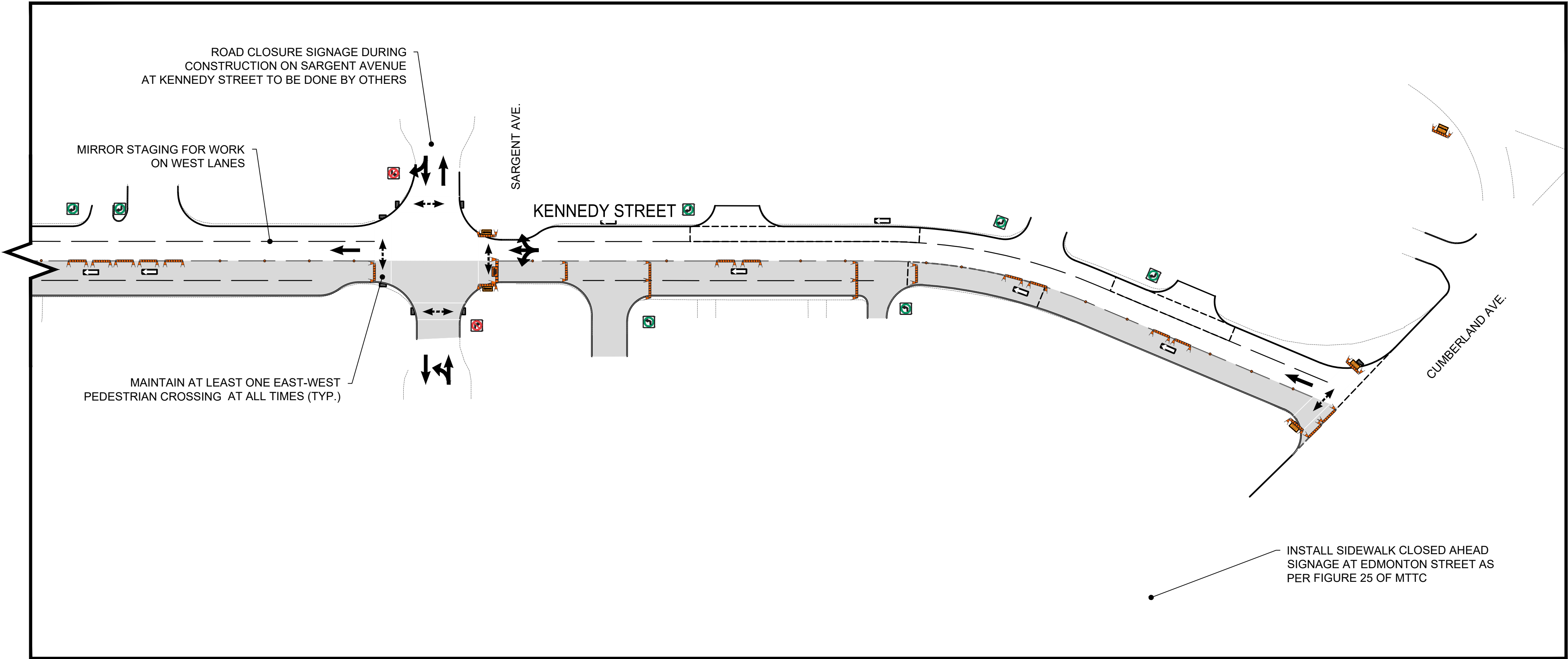


KENNEDY  
SCALE 1:500



KENNEDY  
SCALE 1:500



- NOTES:
1. ALL TRAFFIC SIGNAGE AND TEMPORARY TRAFFIC CONTROL TO CONFORM WITH THE LATEST REVISION OF THE CITY OF WINNIPEG MANUAL OF TEMPORARY TRAFFIC CONTROL ON CITY STREETS
  2. CONTRACTOR SHALL MAINTAIN SAFE AND ACCESSIBLE PEDESTRIAN CROSSINGS. ALL CROSSINGS TO ADEQUATELY DELINEATE THE PATH OF TRAVEL FOR THOSE WITH VISUAL OR MOBILITY IMPAIRMENTS.
  3. CONTRACTOR SHALL MAINTAIN ACCESS TO ALL PRIVATE APPROACHES AT ALL TIMES. REQUIRED CLOSURES OF PRIVATE APPROACHES TO BE APPROVED BY THE CONTRACT ADMINISTRATOR. CONTRACTOR TO ADVISE PROPERTY OWNERS 24 HOURS IN ADVANCE OF ANY CLOSURE.
  4. CONTRACTOR TO INSTALL AND MAINTAIN SOFT CLOSURES AS REQUIRED FOR ALL SIDESTREET AND ALLEY CLOSURES DURING ALL PHASE.
  5. PARKING TO BE REMOVED AT THE TIME OF CONSTRUCTION

LEGEND



CONSTRUCTION AREA



WSP Canada Inc.  
1600 Buffalo Place  
Winnipeg, MB R3T 6B8  
t. 204.477.8650  
f. 204.474.2864  
www.wsp.com

METRIC

WHOLE NUMBERS INDICATE MILLIMETRES  
DECIMALIZED NUMBERS INDICATE METRES

**ENGINEERS  
GEOSCIENTISTS  
MANITOBA**  
Certificate of Authorization  
WSP Canada Inc.  
No. 5750

FOR INFORMATION ONLY



**THE CITY OF WINNIPEG**  
PUBLIC WORKS DEPARTMENT  
ENGINEERING SERVICES DIVISION

2026 DOWNTOWN PAVEMENT  
RENEWALS  
KENNEDY STREET  
TEMPORARY TRAFFIC SIGNAGE

DRAWING NUMBER  
P-3596-36

TENDER NO.  
3-2026