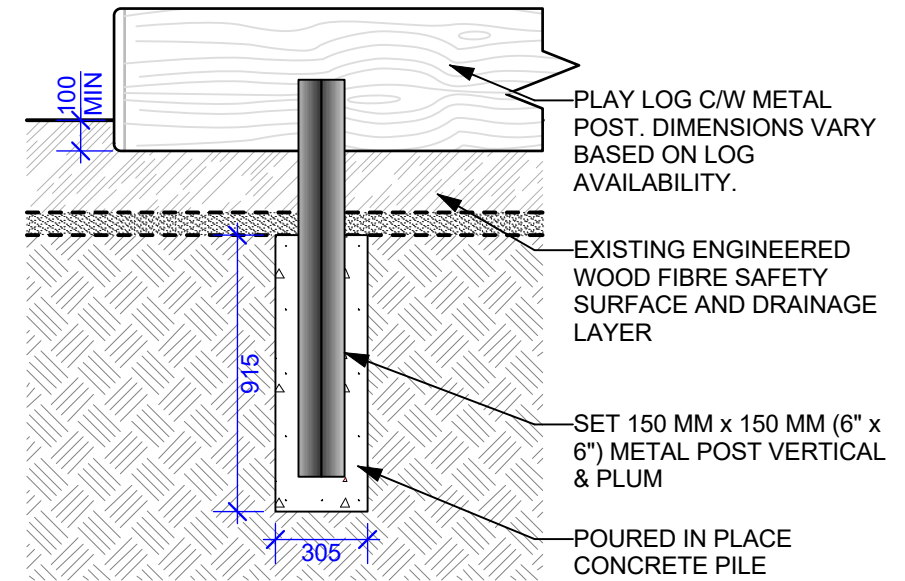


**1 LOG STEPPER**  
Scale: 1:25



**2 PLAY LOG**  
Scale: 1:25

CONTRACTOR TO CONFIRM ALL DIMENSIONS AND REPORT ANY DISCREPANCIES TO CONTRACT ADMINISTRATOR PRIOR TO CONSTRUCTION. LOCATION OF UNDERGROUND STRUCTURES AS SHOWN ARE BASED ON THE BEST INFORMATION AVAILABLE BUT NO GUARANTEE IS GIVEN THAT ALL EXISTING UTILITIES ARE SHOWN OR THAT THE GIVEN LOCATIONS ARE EXACT. CONFIRMATION OF EXISTENCE AND EXACT LOCATION OF ALL SERVICES MUST BE OBTAINED FROM THE INDIVIDUAL UTILITIES BEFORE PROCEEDING WITH CONSTRUCTION.



THE CITY OF WINNIPEG  
Planning, Property and Development Department  
Planning and Land Use Division  
Unit 15 - 30 Fort Street, Winnipeg, MB, (R3C 4X5)

DESIGNED BY	<b>TB</b>	CHECKED BY	
DRAWN BY	<b>TB</b>	APPROVED BY	
HORIZ. SCALE	<b>1:250</b>		
VERT. SCALE			
DATE	<b>MARCH 2026</b>		

MANAGER, PARK AND OPEN SPACES	DATE
MANAGER, PLANNING AND LAND USE DIVISION	DATE

DRAWING TITLE <b>HESPELER PARK PLAYGROUND REDEVELOPMENT</b> Details
SITE ADDRESS <b>25 HESPELER AVE</b>

DRAWING NO. <b>H.7-E.4</b>
BID OPPORTUNITY NO. <b>306-2026</b>