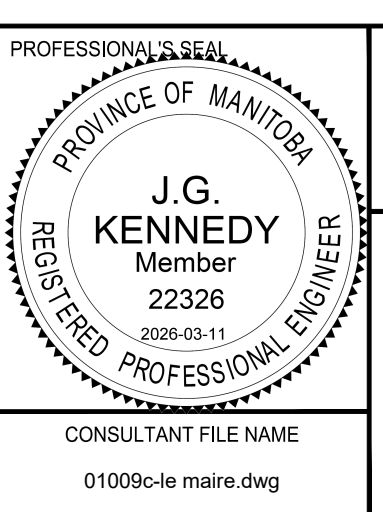
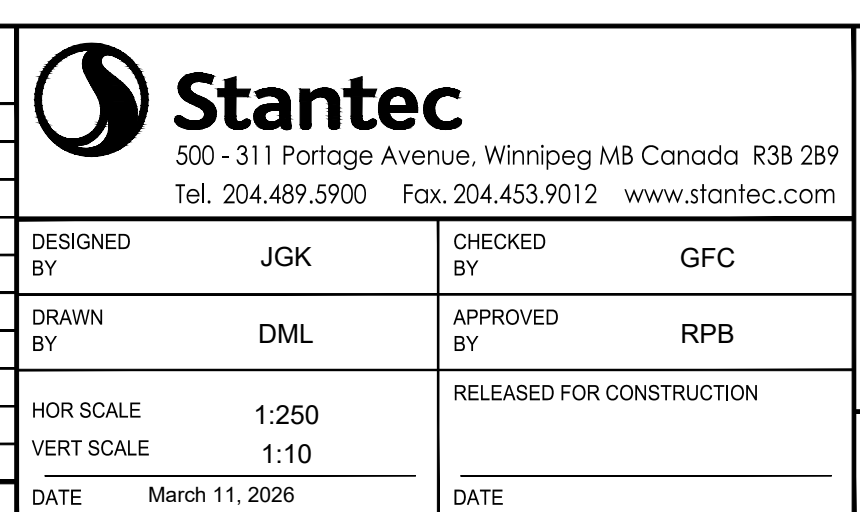



## TYPICAL PAVEMENT SECTION

ASPHALT REHABILITATION

SCALE: NTS

LOCATION APPROVED	
UNDERGROUND STRUCTURES	
SUPR. U/G STRUCTURES COMMITTEE	DATE
<p><b>NOTE:</b></p> <p>LOCATION OF UNDERGROUND STRUCTURES AS SHOWN ARE BASED ON THE BEST INFORMATION AVAILABLE BUT NO GUARANTEE IS GIVEN THAT ALL EXISTING UTILITIES ARE SHOWN OR THAT THE GIVEN LOCATIONS ARE EXACT. CONFIRMATION OF EXISTENCE AND EXACT LOCATION OF ALL SERVICES MUST BE OBTAINED FROM THE INDIVIDUAL UTILITIES BEFORE PROCEEDING WITH CONSTRUCTION.</p>	

[illegible][illegible]



**Winnipeg**

# THE CITY OF WINNIPEG

## PUBLIC WORKS DEPARTMENT

### ENGINEERING DIVISION

## 2026 LOCAL STREET RENEWAL PROGRAM

### LE MAIRE STREET ALLEY

#### SOUTH LIMIT TO NORTH LIMIT

#### REHABILITATION

#### PAVING AND GRADING

STA 0+250 TO STA 0+380

CITY DRAWING NUMBER  
**N/A**

---

SHEET **17** OF **41**

---

DRAWING NUMBER  
**17**