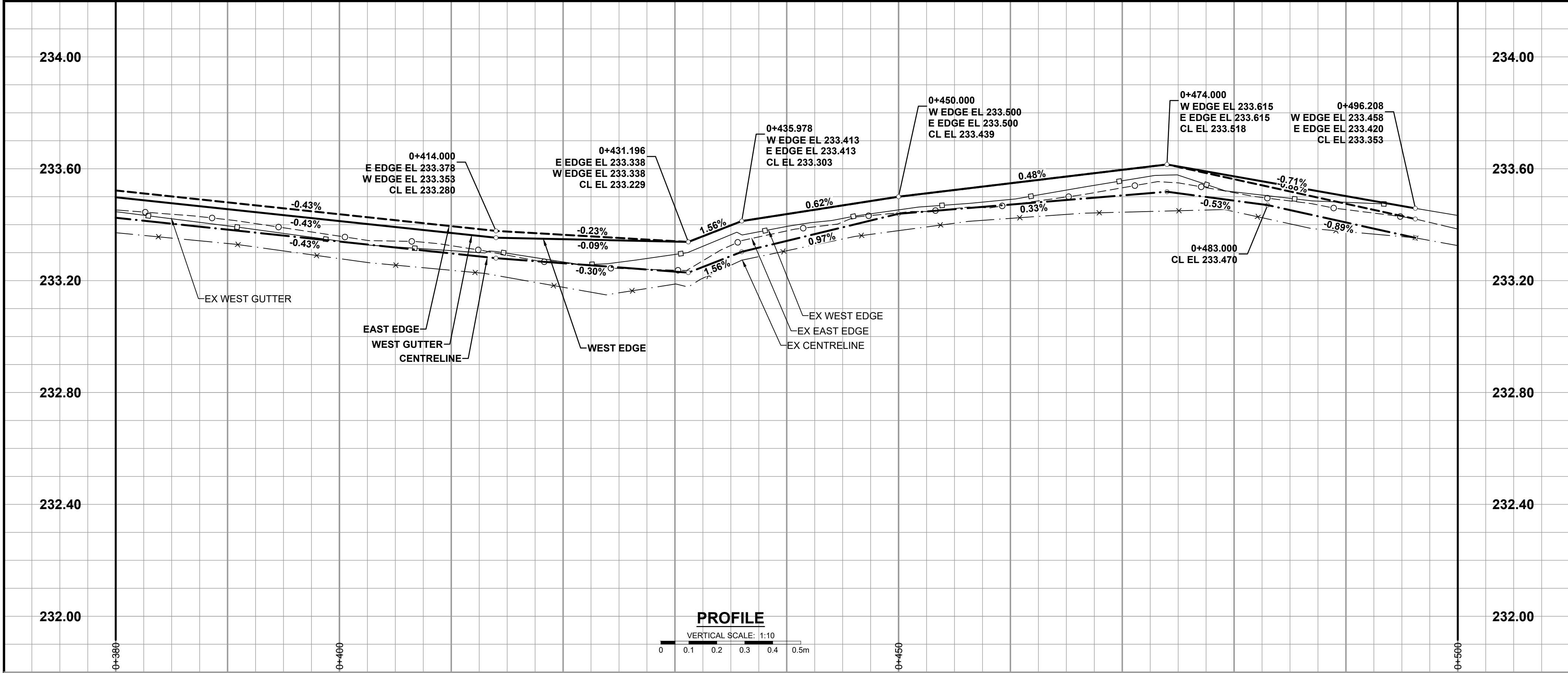
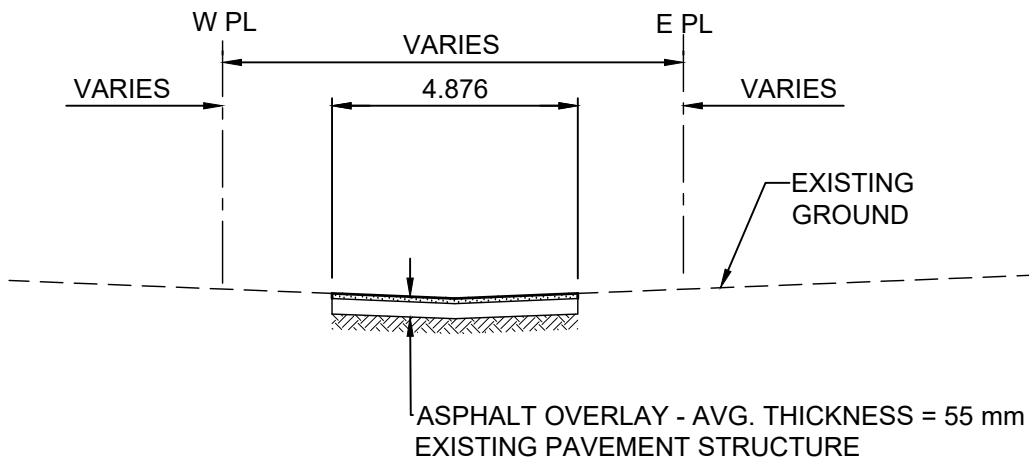
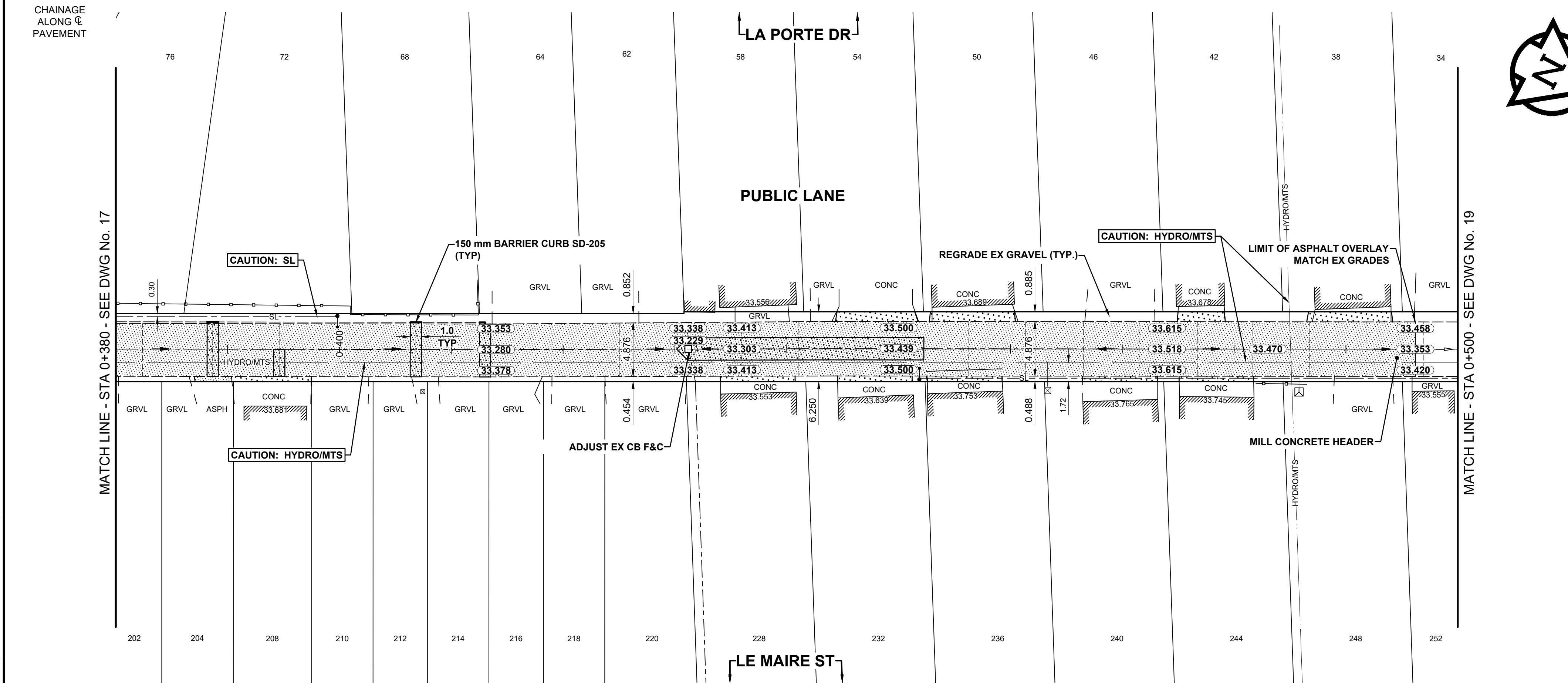


ISO A1 - 594mm x 841mm



- NOTES
1. ADJUST MH AND CB RIMS TO NEW GRADES.
 2. LAMP STANDARDS, HYDRO POLES, AND ANCHORS THAT REQUIRE TEMPORARY SUPPORT, REMOVAL OR REPLACEMENT, TO BE DONE SO AT THE EXPENSE OF THE CONTRACTOR AS NECESSARY.
 3. CONTRACTOR TO REGRADE/RENEW EXISTING PRIVATE SIDEWALKS TO LIMITS AS SHOWN. SIDEWALKS TO BE RENEWED WITH CONCRETE UNLESS NOTED OTHERWISE.
 4. CONTRACTOR TO TAKE PRECAUTIONARY STEPS TO PROTECT EXISTING TREES WITHIN THE LIMITS OF CONSTRUCTION FROM DAMAGE FROM CONSTRUCTION ACTIVITIES AS OUTLINED IN THE SPECIFICATIONS.
 5. CONTRACTOR TO CONFIRM THE LOCATION OF ALL UTILITIES/SERVICES IN THE FIELD PRIOR TO CONSTRUCTION.
 6. MODIFIED BARRIER CURB TO BE USED AT ALL INTERSECTION RADII, BACK LANE RADII AND BULLNOSES.
 7. CONTRACTOR TO OVERLAY DRIVEWAYS TO ENSURE POSITIVE DRAINAGE TO NEW STREET GRADES. FINAL LIMITS TO BE DETERMINED IN THE FIELD BY CONTRACT ADMINISTRATOR.
 8. CB SD-023 & SD-024 OFFSETS ARE DIMENSIONED TO BOC. CB SD-025 OFFSETS ARE DIMENSIONED O/C.
 9. REFER TO TENDER FOR DETAILS REGARDING TRAFFIC MANAGEMENT.
 10. MATCH EXISTING GRADES AT DOOR SILLS.
 11. ADJUST EXISTING WATER VALVES AND WATER SERVICE CURB STOPS TO GRADE.
 12. ADD 200.000 m TO ABBREVIATED ELEVATIONS TO OBTAIN GEODETIC ELEVATIONS.



TYPICAL PAVEMENT SECTION
ASPHALT REHABILITATION
SCALE: NTS

METRIC
WHOLE NUMBERS INDICATE MILLIMETRES
DECIMALIZED NUMBERS INDICATE METRES

EXISTING	LEGEND - PLAN	PROPOSED	EXISTING	LEGEND - PLAN	PROPOSED	EXISTING	LEGEND - PLAN	PROPOSED
	HYDRANT			LDS / WWS			CONCRETE	
	CURB STOP			GAS			ASPHALT	
	CATCH BASIN / CATCH PIT			HYDRO / STREET LIGHT			GRAVEL	
	POLE			CURB RENEWAL			DITCH FLOW	
	TRAFFIC SIGNAL POLE			RAMP CURB			CULVERT	
	SURVEY BAR			ELEVATIONS			SEWER FLOW DIRECTION	
	GEODETIC BENCH MARK			TREE / TREELINE			TEST HOLE / CORE HOLE	
	EXISTING			EXISTING			EXISTING	

LOCATION APPROVED
UNDERGROUND STRUCTURES

SUPR. U/G STRUCTURES DATE

NOTE:
LOCATION OF UNDERGROUND STRUCTURES AS SHOWN ARE BASED ON THE BEST INFORMATION AVAILABLE BUT NO GUARANTEE IS GIVEN THAT ALL EXISTING UTILITIES ARE SHOWN OR THAT THE GIVEN LOCATIONS ARE EXACT. CONFIRMATION OF EXISTENCE AND EXACT LOCATION OF ALL SERVICES MUST BE OBTAINED FROM THE INDIVIDUAL UTILITIES BEFORE PROCEEDING WITH CONSTRUCTION.

BM	ELEV				
0	ISSUED FOR TENDER	26/03/11	JGK		
No.	REVISIONS	YY/MM/DD	BY	DATE	March 11, 2026

Stantec
500 - 311 Portage Avenue, Winnipeg M8 Canada R3B 2B9
Tel. 204.489.5900 Fax. 204.453.9012 www.stantec.com

DESIGNED BY	JGK	CHECKED BY	GFC
DRAWN BY	DML	APPROVED BY	RPB
RELEASED FOR CONSTRUCTION			
HOR SCALE 1:250 VERT SCALE 1:10			
DATE March 11, 2026			

PROFESSIONAL SEAL
PROVINCE OF MANITOBA
REGISTERED PROFESSIONAL ENGINEER
J.G. KENNEDY
Member
22326
2026-03-11
CONSULTANT FILE NAME
01009c-le maire.dwg

THE CITY OF WINNIPEG
PUBLIC WORKS DEPARTMENT
ENGINEERING DIVISION

2026 LOCAL STREET RENEWAL PROGRAM
LE MAIRE STREET ALLEY
SOUTH LIMIT TO NORTH LIMIT
REHABILITATION
PAVING AND GRADING
STA 0+380 TO STA 0+500

CITY DRAWING NUMBER	N/A
SHEET OF	18 41
DRAWING NUMBER	18

U:\12501009\0300_drawing\0302_sheet_files\02_civil\01009c-le maire.dwg Last Saved: 3/11/2026 11:35 AM by kberard Plotted: 3/11/2026 12:56 PM by Bertrand, Kevin