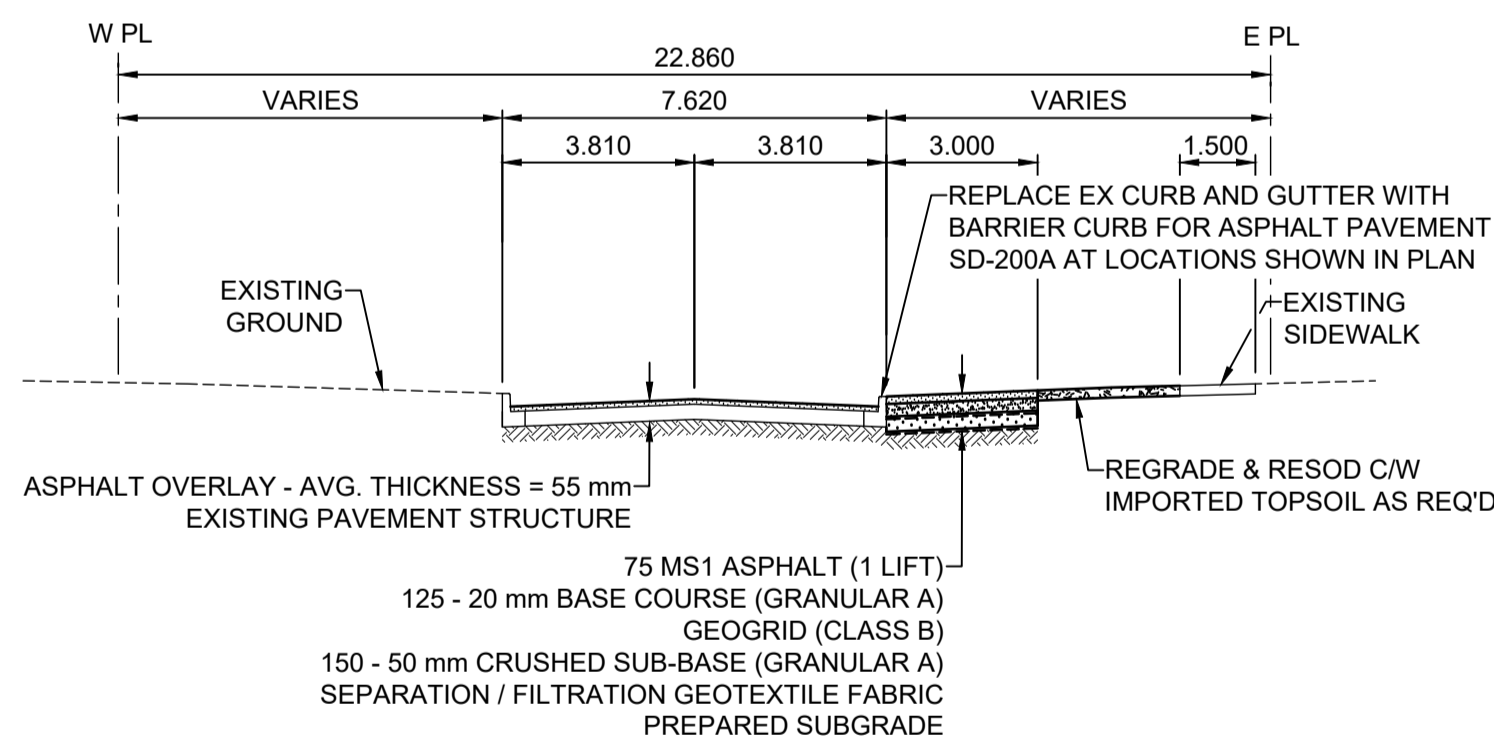
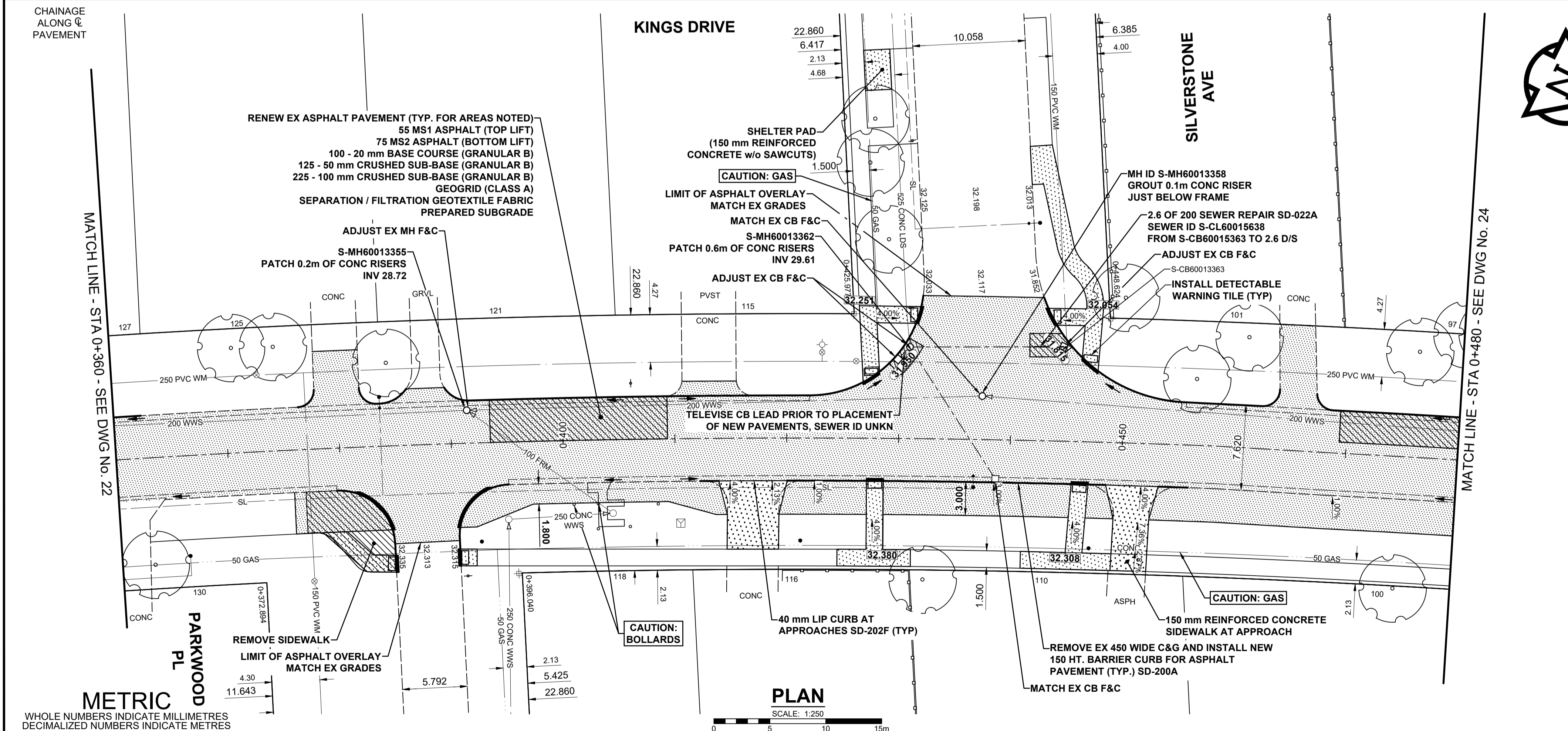
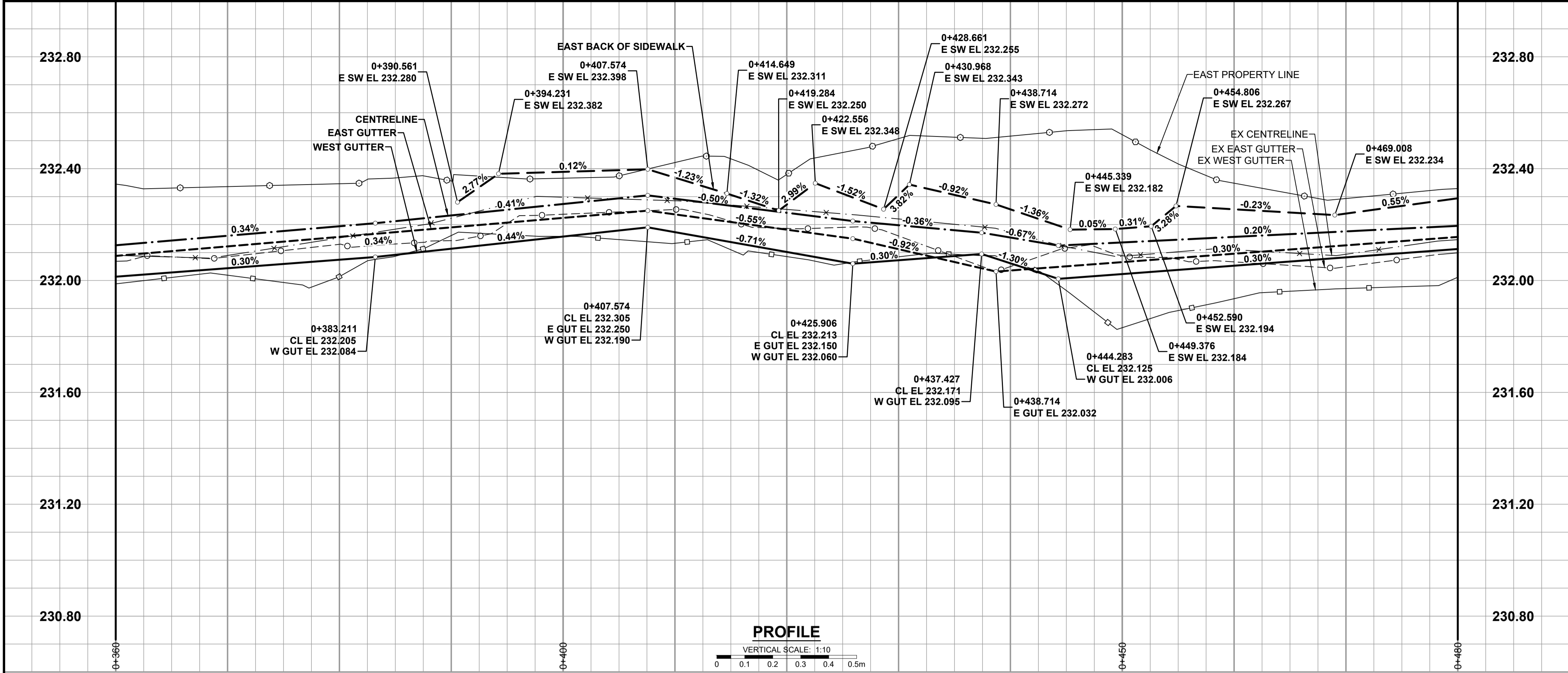


ISO A1 - 594mm x 841mm
U:\12501090\0300_drawing\0302_sheet_files\02_civil\01009c-kings drive.dwg
Last Saved: 3/11/2026 11:53 AM by kberard
Plotted: 3/11/2026 12:58 PM by Berard, Kevin



TYPICAL PAVEMENT SECTION
ASPHALT REHABILITATION
SCALE: NTS

EXISTING	LEGEND - PLAN	PROPOSED	EXISTING	LEGEND - PLAN	PROPOSED	EXISTING	LEGEND - PLAN	PROPOSED
○	HYDRANT	◆	---	LDS / WWS	---	---	CONCRETE	---
⊗	VALVE	⊗	---	WATER MAIN	---	---	CONC SIDEWALK / MEDIAN	---
○	CURB STOP	○	---	GAS	---	---	ASPHALT	---
○	MANHOLE	●	---	TRAFFIC SIGNALS	---	---	PAVING STONE	---
□	CATCH BASIN / CATCH PIT	■	---	HYDRO / STREET LIGHT	---	---	GRAVEL	---
△	CURB INLET	▲	---	COMMUNICATIONS	---	---	PLANING / REMOVAL	---
•	POLE	•	---	CURB RENEWAL	---	---	DITCH FLOW	---
•	LIGHT STANDARD	•	---	PROPERTY LINE	---	---	TOP OF SLOPE	---
•	TRAFFIC SIGNAL POLE	•	---	RAMP CURB	---	---	CULVERT	---
+	SURVEY BAR	+	---	ELEVATIONS	---	---	SEWER FLOW DIRECTION	---
⊕	GEODETIC BENCH MARK	⊕	---	TREE / TREELINE	---	---	TEST HOLE / CORE HOLE	---

EXISTING	LEGEND - PLAN	PROPOSED
---	CONCRETE	---
---	CONC SIDEWALK / MEDIAN	---
---	ASPHALT	---
---	PAVING STONE	---
---	GRAVEL	---
---	PLANING / REMOVAL	---
---	DITCH FLOW	---
---	TOP OF SLOPE	---
---	CULVERT	---
---	SEWER FLOW DIRECTION	---
---	TEST HOLE / CORE HOLE	---

EXISTING	LEGEND - PLAN	PROPOSED
---	CONCRETE	---
---	CONC SIDEWALK / MEDIAN	---
---	ASPHALT	---
---	PAVING STONE	---
---	GRAVEL	---
---	PLANING / REMOVAL	---
---	DITCH FLOW	---
---	TOP OF SLOPE	---
---	CULVERT	---
---	SEWER FLOW DIRECTION	---
---	TEST HOLE / CORE HOLE	---

EXISTING	LEGEND - PLAN	PROPOSED
---	CONCRETE	---
---	CONC SIDEWALK / MEDIAN	---
---	ASPHALT	---
---	PAVING STONE	---
---	GRAVEL	---
---	PLANING / REMOVAL	---
---	DITCH FLOW	---
---	TOP OF SLOPE	---
---	CULVERT	---
---	SEWER FLOW DIRECTION	---
---	TEST HOLE / CORE HOLE	---

EXISTING	LEGEND - PLAN	PROPOSED
---	CONCRETE	---
---	CONC SIDEWALK / MEDIAN	---
---	ASPHALT	---
---	PAVING STONE	---
---	GRAVEL	---
---	PLANING / REMOVAL	---
---	DITCH FLOW	---
---	TOP OF SLOPE	---
---	CULVERT	---
---	SEWER FLOW DIRECTION	---
---	TEST HOLE / CORE HOLE	---

Stantec
500 - 311 Portage Avenue, Winnipeg M8 Canada R3B 2B9
Tel. 204.489.5900 Fax. 204.453.9012 www.stantec.com

DESIGNED BY

CHKD BY

DRAWN BY

HOR SCALE

VERT SCALE

DATE

JGK

GFC

KMB

1:250

1:10

March 11, 2026

PROFESSIONAL SEAL

PROVINCE OF MANITOBA

REGISTERED PROFESSIONAL ENGINEER

J.G. KENNEDY

Member

22326

2025-03-11

CONSULTANT FILE NAME

01009c-kings drive.dwg

THE CITY OF WINNIPEG
PUBLIC WORKS DEPARTMENT
ENGINEERING DIVISION

2026 LOCAL STREET RENEWAL PROGRAM
KINGS DRIVE
KILKENNY DR TO SEIER BAY
REHABILITATION
PAVING AND GRADING
STA 0+360 TO STA 0+480

CITY DRAWING NUMBER

N/A

SHEET

23

OF

41

DRAWING NUMBER

23

- NOTES**
- ADJUST MH AND CB RIMS TO NEW GRADES.
 - LAMP STANDARDS, HYDRO POLES, AND ANCHORS THAT REQUIRE TEMPORARY SUPPORT, REMOVAL OR REPLACEMENT, TO BE DONE SO AT THE EXPENSE OF THE CONTRACTOR AS NECESSARY.
 - CONTRACTOR TO REGRADE/RENEW EXISTING PRIVATE SIDEWALKS TO LIMITS AS SHOWN. SIDEWALKS TO BE RENEWED WITH CONCRETE UNLESS NOTED OTHERWISE.
 - CONTRACTOR TO TAKE PRECAUTIONARY STEPS TO PROTECT EXISTING TREES WITHIN THE LIMITS OF CONSTRUCTION FROM DAMAGE FROM CONSTRUCTION ACTIVITIES AS OUTLINED IN THE SPECIFICATIONS.
 - CONTRACTOR TO CONFIRM THE LOCATION OF ALL UTILITIES/SERVICES IN THE FIELD PRIOR TO CONSTRUCTION.
 - MODIFIED BARRIER CURB TO BE USED AT ALL INTERSECTION RADII, BACK LANE RADII AND BULLNOSES.
 - CONTRACTOR TO OVERLAY DRIVEWAYS TO ENSURE POSITIVE DRAINAGE TO NEW STREET GRADES. FINAL LIMITS TO BE DETERMINED IN THE FIELD BY CONTRACT ADMINISTRATOR.
 - CB SD-023 & SD-024 OFFSETS ARE DIMENSIONED TO BOC. CB SD-025 OFFSETS ARE DIMENSIONED O/C.
 - REFER TO TENDER FOR DETAILS REGARDING TRAFFIC MANAGEMENT.
 - ADJUST EXISTING WATER VALVES AND WATER SERVICE CURB STOPS TO GRADE.
 - ADD 200.000 m TO ABBREVIATED ELEVATIONS TO OBTAIN GEODETIC ELEVATIONS.