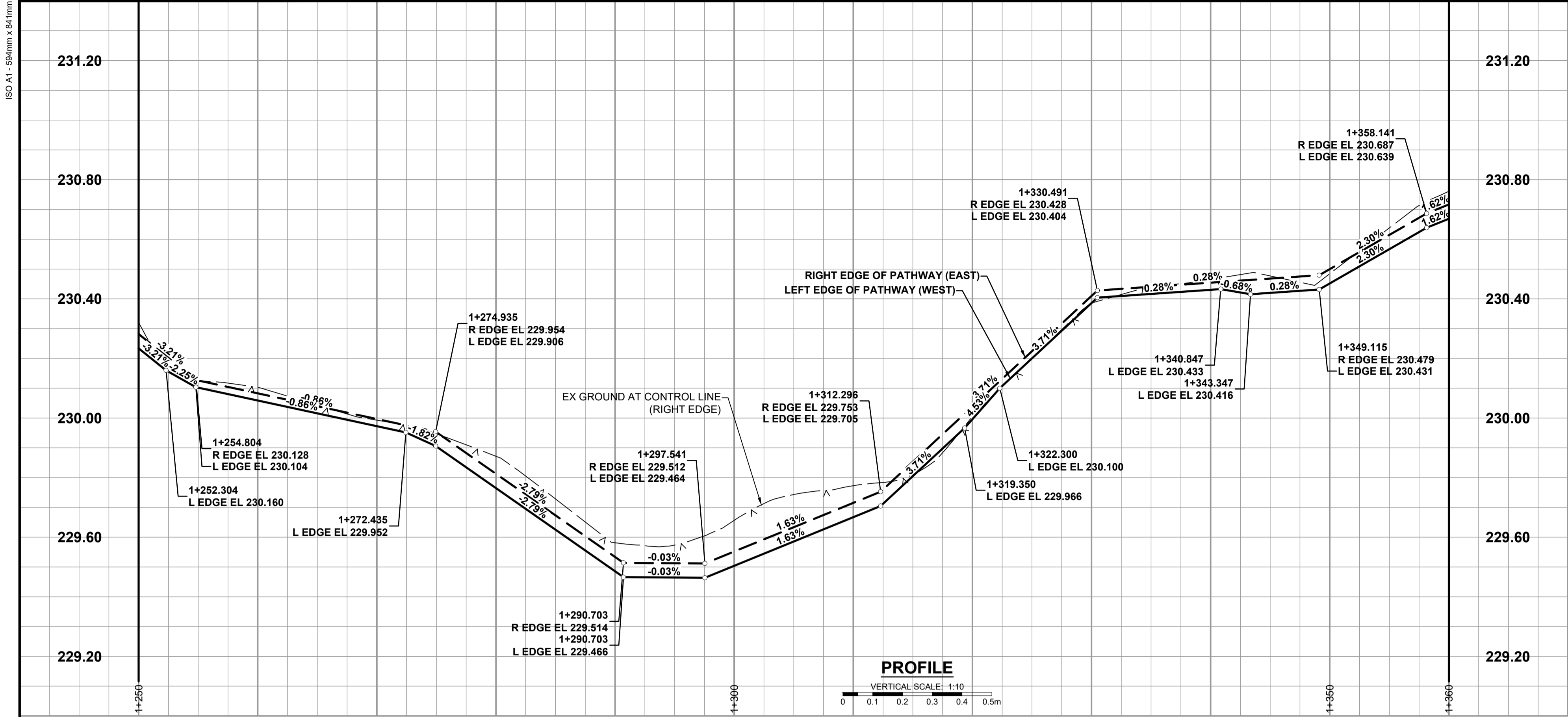
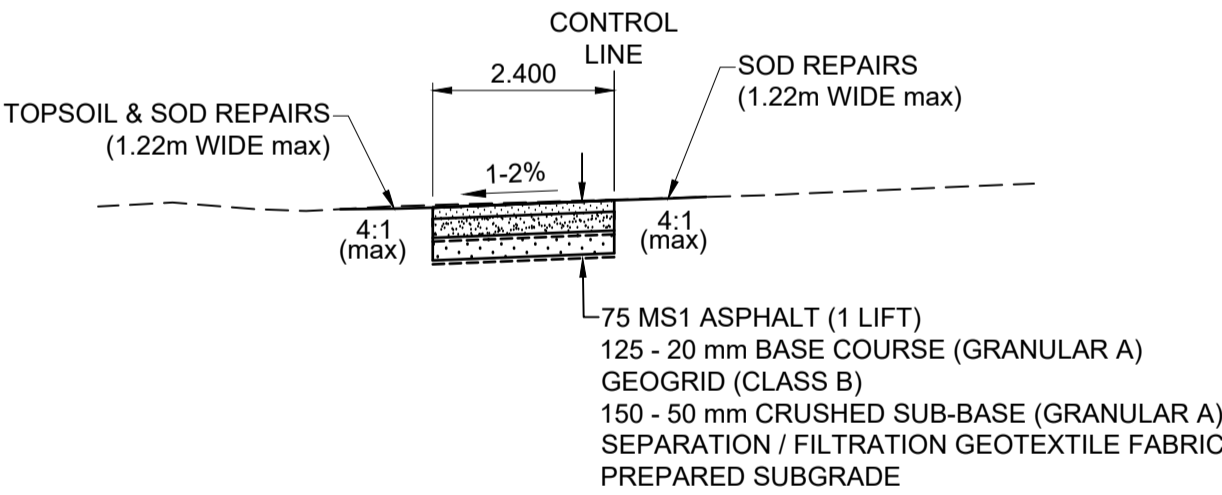
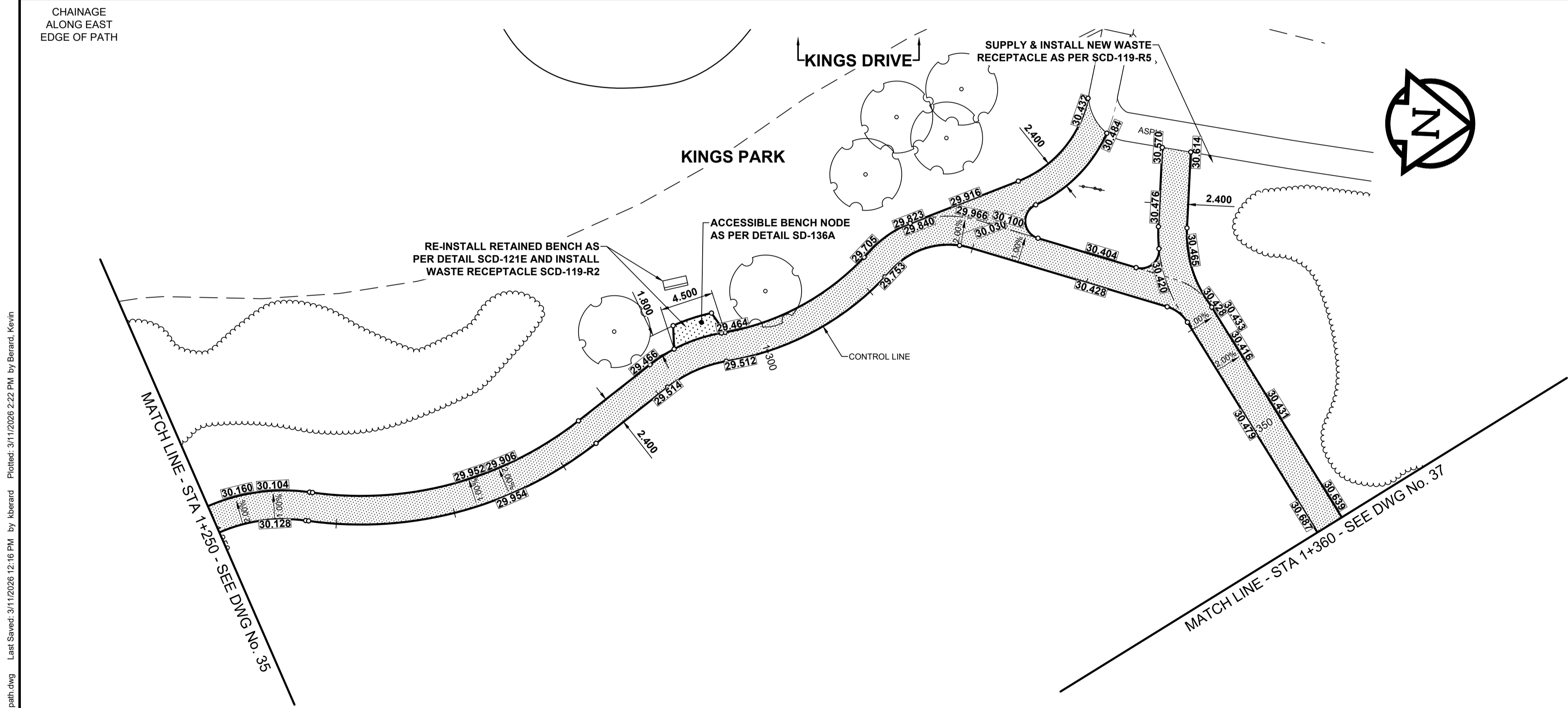


ISO A1 - 594mm x 841mm



- NOTES
1. CONTRACTOR TO TAKE PRECAUTIONARY STEPS TO PROTECT EXISTING TREES WITHIN THE LIMITS OF CONSTRUCTION FROM DAMAGE FROM CONSTRUCTION ACTIVITIES AS OUTLINED IN THE SPECIFICATIONS.
 2. CONTRACTOR TO CONFIRM THE LOCATION OF ALL UTILITIES/SERVICES IN THE FIELD PRIOR TO CONSTRUCTION.
 3. REFER TO TENDER FOR DETAILS REGARDING TRAFFIC MANAGEMENT.
 4. ADD 200.000 m TO ABBREVIATED ELEVATIONS TO OBTAIN GEODETIC ELEVATIONS.



TYPICAL PATHWAY SECTION
ASPHALT PATHWAY
SCALE: NTS

METRIC
WHOLE NUMBERS INDICATE MILLIMETRES
DECIMALIZED NUMBERS INDICATE METRES



⊕	HYDRANT	◆	---	LDS / WWS	---	CONCRETE	
⊙	VALVE	⊙	---	WATER MAIN	---	CONC SIDEWALK / MEDIAN	
⊖	CURB STOP	⊖	---	GAS	---	ASPHALT	
○	MANHOLE	●	---	TRAFFIC SIGNALS	---	PAVING STONE	
□	CATCH BASIN / CATCH PIT	■	---	HYDRO / STREET LIGHT	---	GRAVEL	
△	CURB INLET	▲	---	COMMUNICATIONS	---	PLANING / REMOVAL	
•	POLE	•	---	CURB RENEWAL	---	DITCH FLOW	
•	LIGHT STANDARD	•	---	PROPERTY LINE	---	TOP OF SLOPE	
•	TRAFFIC SIGNAL POLE	•	---	RAMP CURB	---	CULVERT	
⊕	SURVEY BAR	⊕	---	ELEVATIONS	(33.333)	SEWER FLOW DIRECTION	
⊕	GEODETIC BENCH MARK	⊕	---	TREE / TREELINE	---	TEST HOLE / CORE HOLE	
EXISTING	LEGEND - PLAN	PROPOSED	EXISTING	LEGEND - PLAN	PROPOSED	EXISTING	LEGEND - PLAN

LOCATION APPROVED
UNDERGROUND STRUCTURES

SUPR. U/G STRUCTURES DATE

NOTE:
LOCATION OF UNDERGROUND STRUCTURES AS SHOWN ARE BASED ON THE BEST INFORMATION AVAILABLE BUT NO GUARANTEE IS GIVEN THAT ALL EXISTING UTILITIES ARE SHOWN OR THAT THE GIVEN LOCATIONS ARE EXACT. CONFIRMATION OF EXISTENCE AND EXACT LOCATION OF ALL SERVICES MUST BE OBTAINED FROM THE INDIVIDUAL UTILITIES BEFORE PROCEEDING WITH CONSTRUCTION.

BM	ELEV				
0	ISSUED FOR TENDER	26/03/11	JGK		
No.	REVISIONS	YY/MM/DD	BY		

Stantec
500 - 311 Portage Avenue, Winnipeg M8 Canada R3B 2B9
Tel. 204.489.5900 Fax. 204.453.9012 www.stantec.com

DESIGNED BY	MEE	CHECKED BY	JGK
DRAWN BY	KMB	APPROVED BY	RPB
RELEASED FOR CONSTRUCTION			
DATE March 11, 2026			

PROFESSIONAL'S SEAL
PROVINCE OF MANITOBA
J.G. KENNEDY
Member
22326
2026-03-11
REGISTERED PROFESSIONAL ENGINEER

CONSULTANT FILE NAME
01009c-kings park path.dwg

THE CITY OF WINNIPEG
PUBLIC WORKS DEPARTMENT
ENGINEERING DIVISION

2026 LOCAL STREET RENEWAL PROGRAM
KINGS PARK PATHWAY
WEST LEG OF PATH TO EAST LEG OF PATH
ASPHALT PATHWAY CONSTRUCTION
PAVING AND GRADING
STA 1+250 TO STA 1+360

CITY DRAWING NUMBER	N/A
SHEET OF	36 OF 41
DRAWING NUMBER	36

ENGINEERS
GEOSCIENTISTS
MANITOBA
Certificate of Authorization
Stantec Consulting Ltd.
No. 1301

TENDER No. 33-2026

U:\132501009\0300_drawing\0302_sheet_files\02_civil\01009c-kings park path.dwg Last Saved: 3/11/2026 12:16 PM by kberard Plotted: 3/11/2026 2:22 PM by Bernard, Kevin