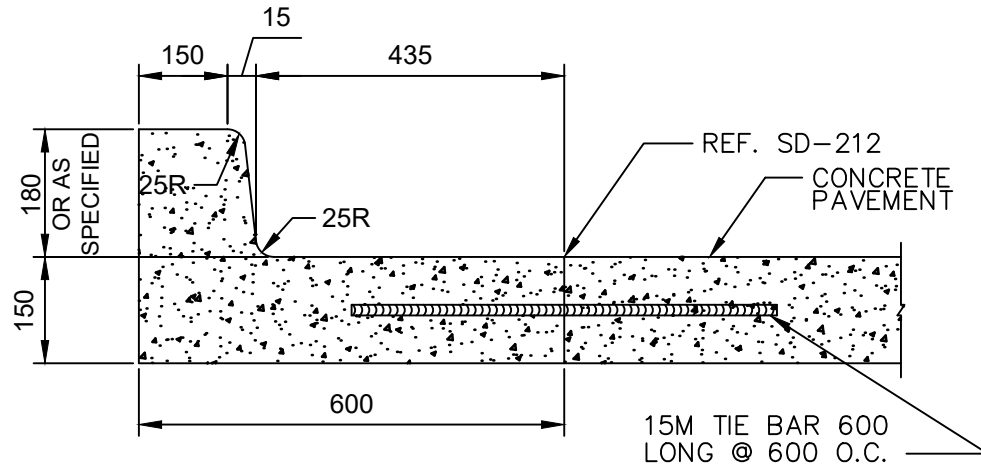
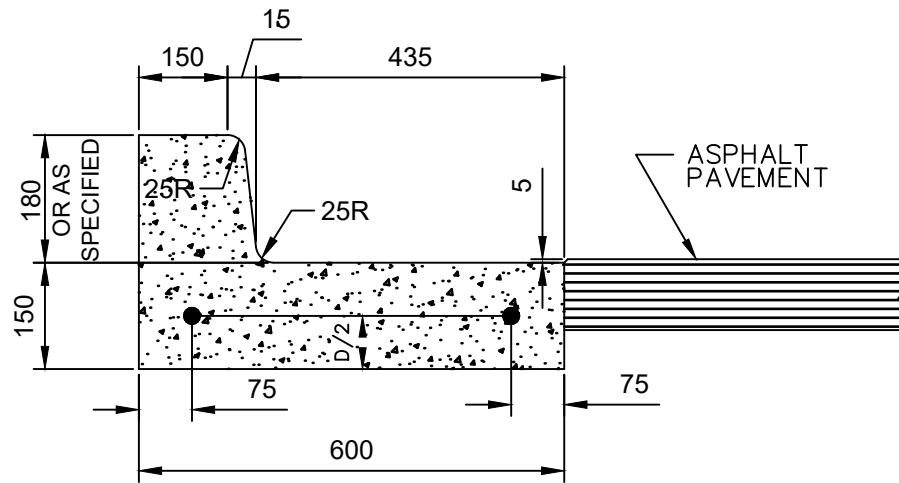


# **APPENDIX 'C'**

## **STANDARD DETAILS**



CURB AND GUTTER  
FOR CONCRETE PAVEMENTS



CURB AND GUTTER  
FOR ASPHALT PAVEMENTS

- NOTE: 1. REDUCE CURB HEIGHT TO 40.  
APPLICABLE FOR PRIVATE  
APPROACHES ON LOCAL RESIDENTIAL  
STREETS. REF SD-202B
2. TRANSVERSE SAW CUT EVERY 3000  
OR AT PAVEMENT JOINTS.

3. THIS DETAIL SHALL ONLY BE  
USED FOR REPAIRS OF EXISTING  
CURB AND GUTTER OR AS  
DIRECTED BY THE CONTRACT  
ADMINISTRATOR.

DIMENSIONS IN MILLIMETRES



THE CITY OF WINNIPEG  
PUBLIC WORKS DEPARTMENT

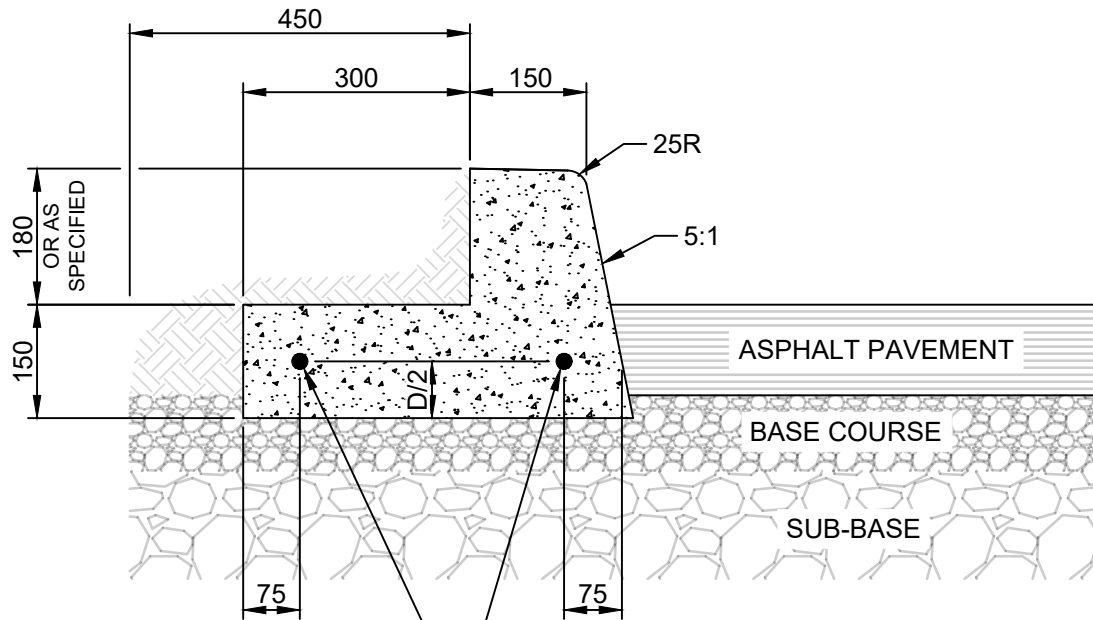
Reference Spec. No.  
CW 3325

Revisions			
No.	Date	Description	By
1.	OCT 24	ADDED NOTE 3	R.B.

CURB AND GUTTER

Designed By: B.P.	Drawn By: R.B.	Scale : N.T.S.
Checked By: D.R.K.	Date: 2008-12-15	Drawing No.
Approved: PAVEMENT MANAGEMENT BRANCH		SD-200





FOR CONSTRUCTION JOINTS:  
 19.1mm DOWELS 450 LONG;  
 LUBRICATED WITH ASPHALTIC  
 CUT-BACK.

NOTES:

1. TRANSVERSE SAW CUT EVERY 3m OR AT PAVEMENT JOINTS
2. TRANSVERSE SAW CUTS ARE TO BE A MAXIMUM DEPTH OF 25mm
3. FACE OF CURB SHALL BE SEALED IN ACCORDANCE WITH CW 3250

DIMENSIONS IN MILLIMETRES



**THE CITY OF WINNIPEG**  
 PUBLIC WORKS DEPARTMENT

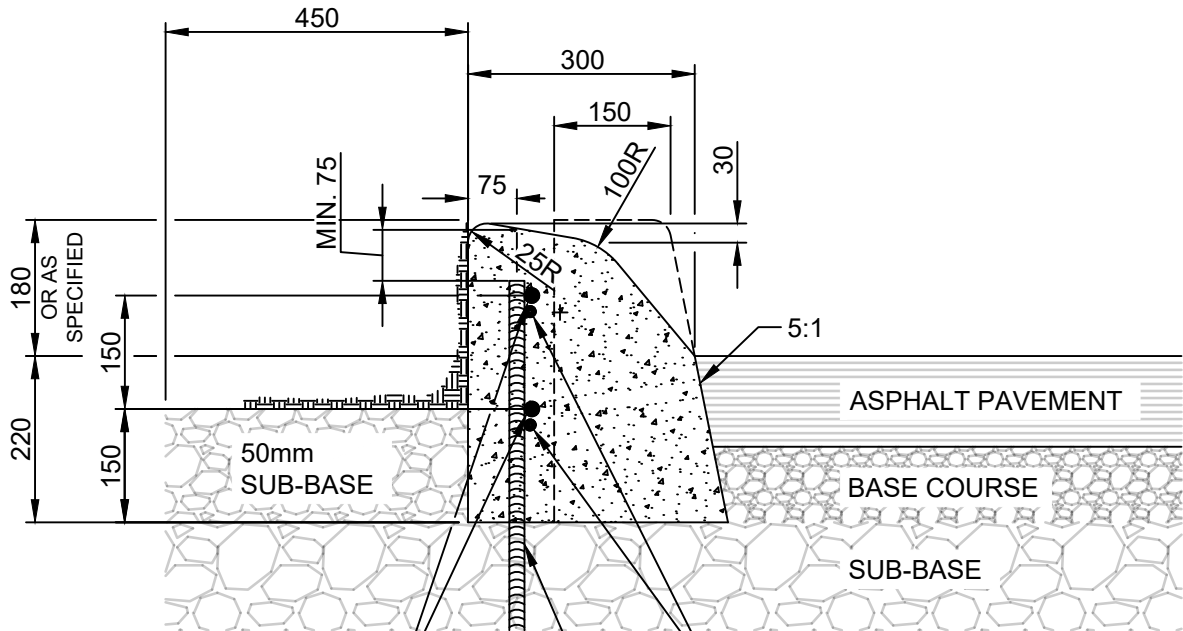
Reference Spec. No.  
 CW 3325

Revisions

No.	Date	Description	By

**BARRIER CURB AND  
 REVERSED GUTTER FOR  
 ASPHALT PAVEMENT**

Designed By: A.G.	Drawn By: T.K.	Scale : N.T.S
Checked By: B.K.	Date: 2025-12-15	Drawing No.
Approved: PAVEMENT MANAGEMENT BRANCH		SD-200B



FOR CONSTRUCTION JOINTS:  
 2-19.1mm DOWELS 450 LONG  
 PLACED EVERY 6m;  
 LUBRICATED WITH ASPHALTIC  
 CUT-BACK.

10M LONGITUDINAL  
 DEFORMED BARS

20M TIE BAR 600  
 LONG @ 600 O.C.

NOTES:

1. TRANSVERSE SAW CUT EVERY 3m OR AT PAVEMENT JOINTS
2. TRANSVERSE SAW CUTS ARE TO BE A MAXIMUM DEPTH OF 25mm
3. FACE OF CURB SHALL BE SEALED IN ACCORDANCE WITH CW 3250

DIMENSIONS IN MILLIMETRES



**THE CITY OF WINNIPEG**  
 PUBLIC WORKS DEPARTMENT

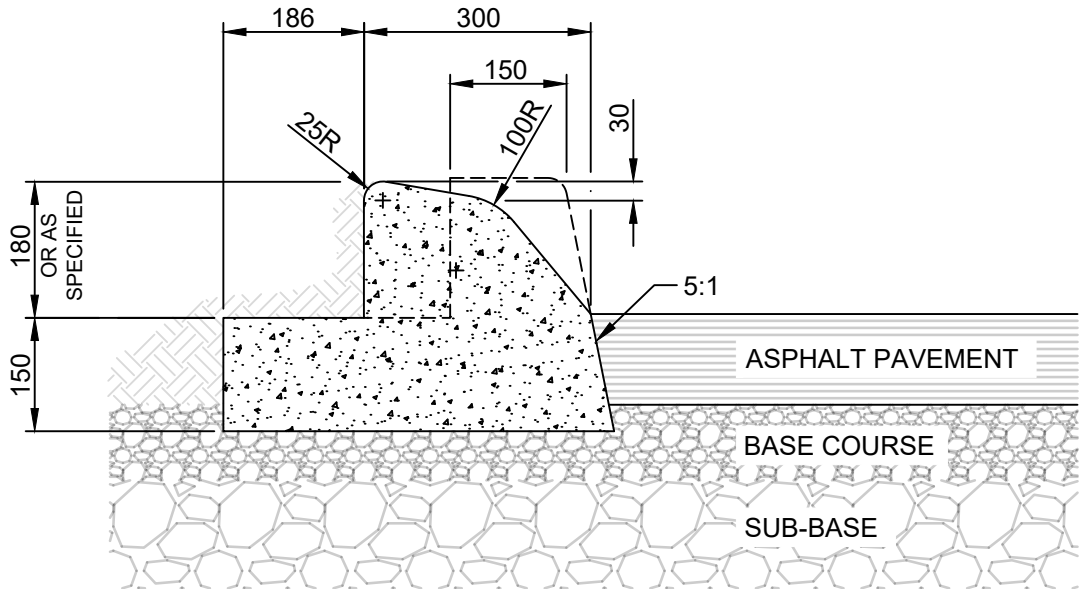
Reference Spec. No.  
 CW 3325

Revisions

No.	Date	Description	By

**MODIFIED BARRIER  
 CURB FOR ASPHALT  
 PAVEMENT**

Designed By: A.G.	Drawn By: R.B.	Scale : N.T.S
Checked By: B.K.	Date: 2025-12-15	Drawing No. SD-203C
Approved: PAVEMENT MANAGEMENT BRANCH		



NOTES:

1. TRANSVERSE SAW CUT EVERY 3m OR AT PAVEMENT JOINTS
2. TRANSVERSE SAW CUTS ARE TO BE A MAXIMUM DEPTH OF 25mm
3. FOR CONSTRUCTION JOINTS INSTALL TWO 19.1mm DOWELS 450 LONG; LUBRICATED WITH ASPHALTIC CUT-BACK. REF SD-200B.
4. FACE OF CURB SHALL BE SEALED IN ACCORDANCE WITH CW 3250

DIMENSIONS IN MILLIMETRES



**THE CITY OF WINNIPEG**  
PUBLIC WORKS DEPARTMENT

Reference Spec. No.  
CW 3325

Revisions

No.	Date	Description	By

**MODIFIED BARRIER CURB  
WITH REVERSED GUTTER  
FOR ASPHALT PAVEMENT**

Designed By:  
A.G.

Drawn By:  
T.K.

Scale :  
N.T.S

Checked By:  
B.K.

Date:  
2025-12-15

Drawing No.

Approved:  
PAVEMENT MANAGEMENT BRANCH

SD-203D

SAWCUT FULL-DEPTH PRIOR TO AND FOR THE FULL LENGTH OF CURB REMOVAL

REPLACE ASPHALT FOR FULL LANE WIDTH OR AS DIRECTED BY CONTRACT ADMINISTRATOR

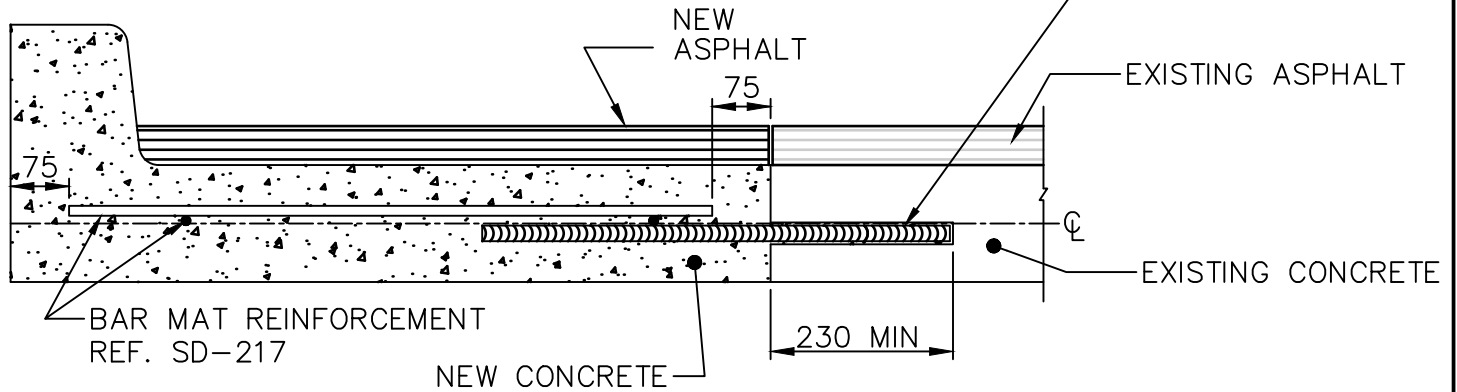
EXISTING CONCRETE

EXISTING CURB, SLAB AND ASPHALT TO BE REMOVED (REINFORCING NOT SHOWN)

100 MIN.

PAVEMENT REMOVAL


600 LONG TIE BARS:  
 15M @ 600 O.C. FOR PAVEMENTS D<200  
 20M @ 600 O.C. FOR PAVEMENTS D=200  
 25M @ 600 O.C. FOR PAVEMENTS D>200



PAVEMENT WIDENING

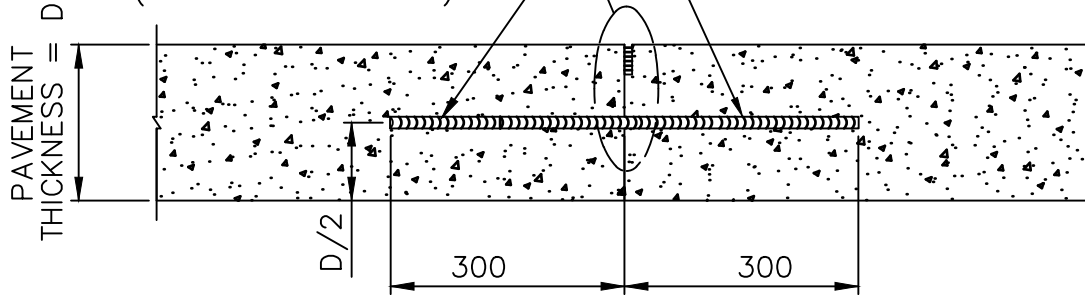
NOTE:  
 TRANSVERSE SAWCUT TYP. 4.0-5.0m  
 OR AT PAVEMENT JOINTS.

DIMENSIONS IN MILLIMETRES

 <p><b>THE CITY OF WINNIPEG</b> PUBLIC WORKS DEPARTMENT</p>	Revisions			
	No.	Date	Description	By
Reference Spec. No. CW 3230, CW 3310	2.	MAY 25	TIE BAR SIZE AND TRANSVERSE SAWCUT	R.B.
	1.	JAN 03	GENERAL REVISION	L.W.B.
PAVEMENT WIDENING (CONCRETE PAVEMENT WITH ASPHALT OVERLAY)	Designed By:		Drawn By:	Scale :
	A.G.		R.B.	N.T.S.
	Checked By:		Date:	Drawing No.
B.K.		2025-12-15	SD-208	
Approved:				
PAVEMENT MANAGEMENT BRANCH				

BUTT JOINT  
REF. SD-212

BAR MAT REINFORCEMENT  
REF. SD-217  
(WHERE APPLICABLE)

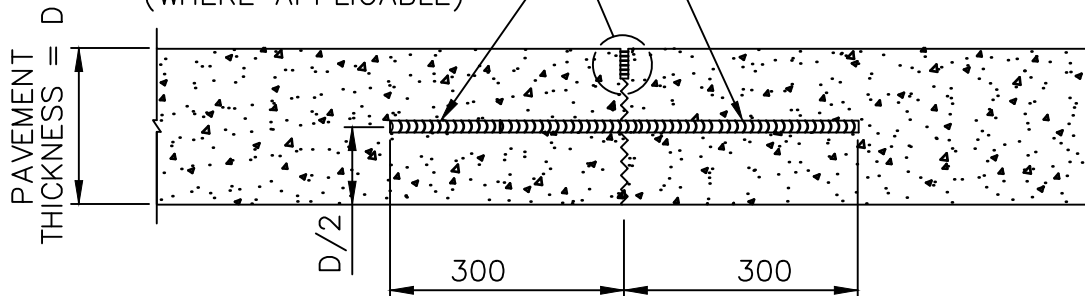


600 LONG TIE BARS:  
15M @ 600 O.C. FOR PAVEMENTS  $D < 200$   
20M @ 600 O.C. FOR PAVEMENTS  $D = 200$   
25M @ 600 O.C. FOR PAVEMENTS  $D > 200$

FORMED LONGITUDINAL JOINT

SAWN JOINT REF. SD-212

BAR MAT REINFORCEMENT  
REF. SD-217  
(WHERE APPLICABLE)



600 LONG TIE BARS:  
15M @ 600 O.C. FOR PAVEMENTS  $D < 200$   
20M @ 600 O.C. FOR PAVEMENTS  $D = 200$   
25M @ 600 O.C. FOR PAVEMENTS  $D > 200$

SAWN LONGITUDINAL JOINT

DIMENSIONS IN MILLIMETRES



**THE CITY OF WINNIPEG**  
PUBLIC WORKS DEPARTMENT

Reference Spec. No.  
CW 3230, CW 3310

Revisions

No.	Date	Description	By
1.	OCT 24	TIE BAR SIZE	A.G.

LONGITUDINAL JOINT FOR  
CONCRETE PAVEMENT

Designed By:  
L.S.W.L.

Drawn By:  
R.B.

Scale :  
N.T.S.

Checked By:  
D.R.K.

Date:  
2025-12-15

Drawing No.

Approved:  
PAVEMENT MANAGEMENT BRANCH

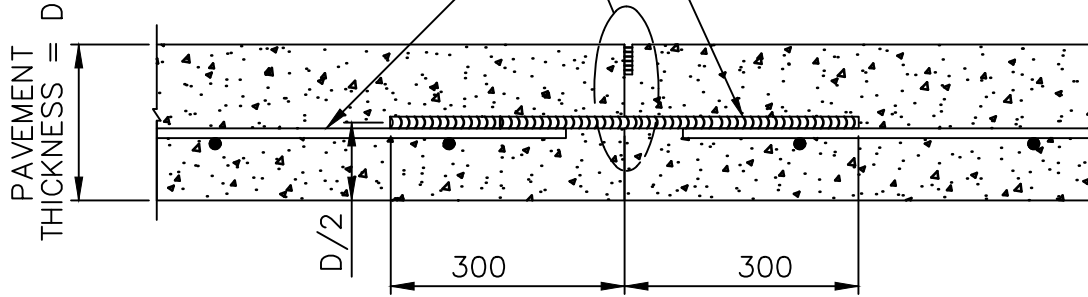
SD-210A

BUTT JOINT  
REF. SD-212

BAR MAT REINFORCEMENT  
REF. SD-217  
(WHERE APPLICABLE)

600 LONG TIE BARS:

- 15M @ 600 O.C. FOR PAVEMENTS  $D < 200$
- 20M @ 600 O.C. FOR PAVEMENTS  $D = 200$
- 25M @ 600 O.C. FOR PAVEMENTS  $D > 200$



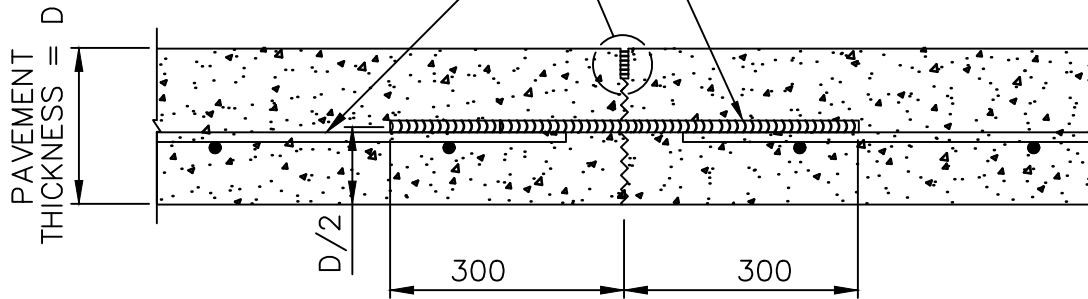
FORMED LONGITUDINAL JOINT

SAWN JOINT REF. SD-212

BAR MAT REINFORCEMENT  
REF. SD-217  
(WHERE APPLICABLE)

600 LONG TIE BARS:

- 15M @ 600 O.C. FOR PAVEMENTS  $D < 200$
- 20M @ 600 O.C. FOR PAVEMENTS  $D = 200$
- 25M @ 600 O.C. FOR PAVEMENTS  $D > 200$



SAWN LONGITUDINAL JOINT

DIMENSIONS IN MILLIMETRES



**THE CITY OF WINNIPEG**  
PUBLIC WORKS DEPARTMENT

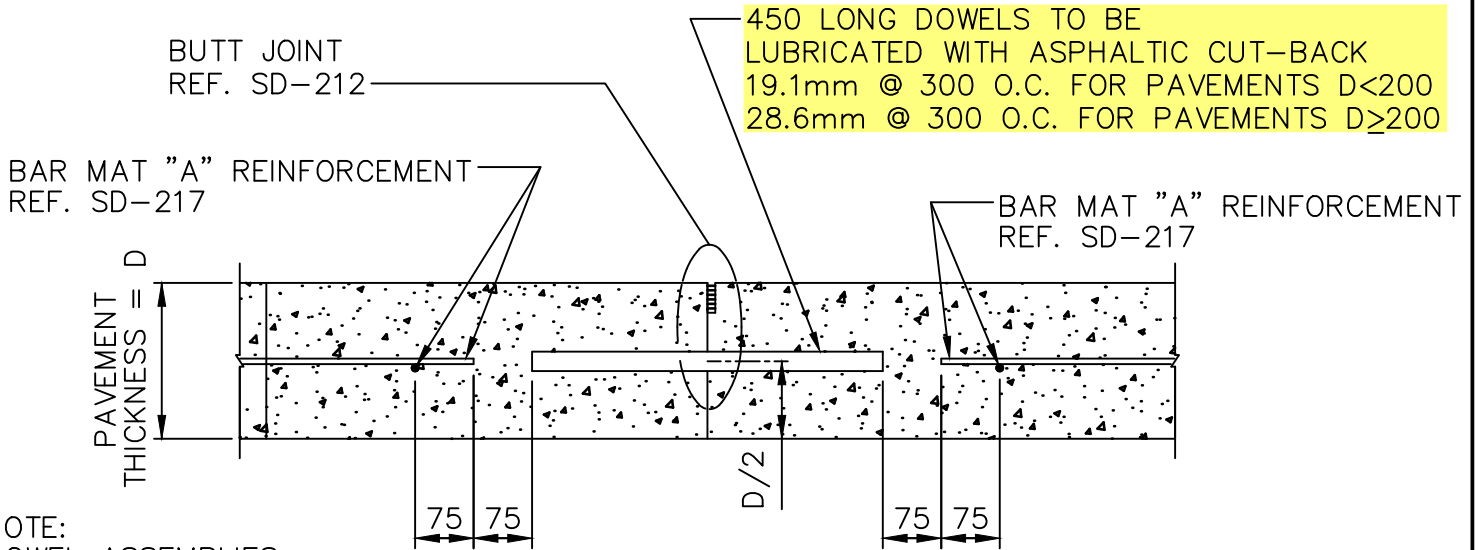
Reference Spec. No.  
CW 3230, CW 3310

Revisions

No.	Date	Description	By

LONGITUDINAL JOINT FOR  
CONCRETE PAVEMENTS WITH BAR  
MAT REINFORCEMENT

Designed By: A.G.	Drawn By: R.B.	Scale : N.T.S.
Checked By: B.K.	Date: 2025-12-15	Drawing No.
Approved: PAVEMENT MANAGEMENT BRANCH		SD-210B



NOTE:  
DOWEL ASSEMBLIES  
NOT SHOWN

CONSTRUCTION JOINT MAT "A"

DIMENSIONS IN MILLIMETRES



**THE CITY OF WINNIPEG**  
PUBLIC WORKS DEPARTMENT

Reference Spec. No.  
CW 3230, CW 3310

Revisions

No.	Date	Description	By
1.	OCT 24	GENERAL REVISION	R.B.

**CONSTRUCTION JOINT  
FOR REINFORCED  
CONCRETE PAVEMENT**

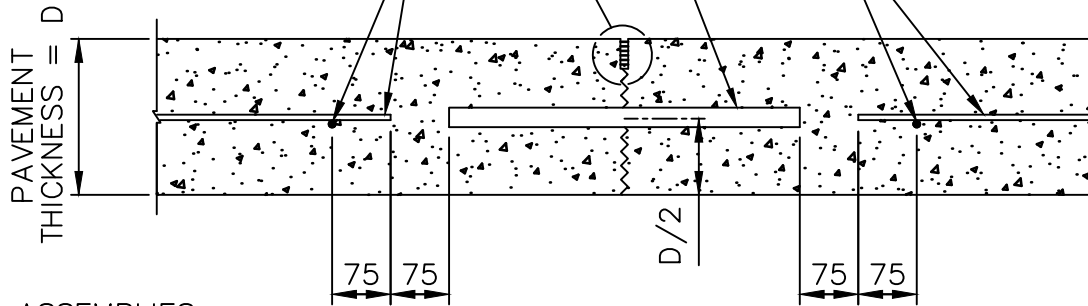
Designed By: A.G.	Drawn By: R.B.	Scale : N.T.S.
Checked By: B.K.	Date: 2025-12-15	Drawing No. SD-211A
Approved: PAVEMENT MANAGEMENT BRANCH		

SAWN JOINT REF. SD-212

BAR MAT "A" REINFORCEMENT  
REF. SD-217

450 LONG DOWELS TO BE  
LUBRICATED WITH ASPHALTIC CUT-BACK  
19.1mm @ 300 O.C. FOR PAVEMENTS D<200  
28.6mm @ 300 O.C. FOR PAVEMENTS D≥200

BAR MAT "A" REINFORCEMENT  
REF. SD-217



NOTE:  
DOWEL ASSEMBLIES  
NOT SHOWN

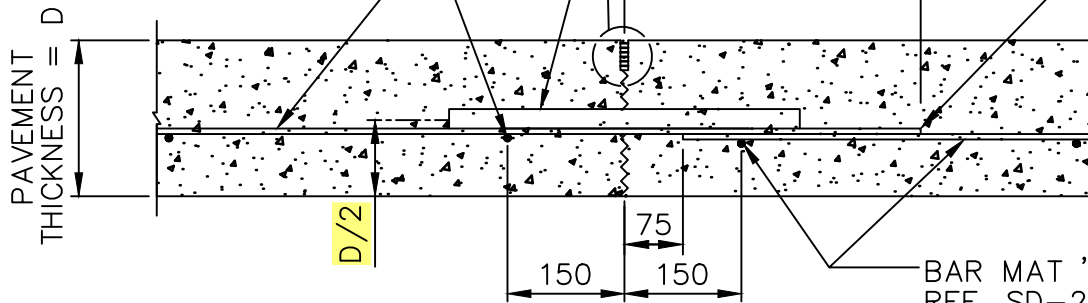
CONTRACTION JOINT MAT "A"

450 LONG DOWELS TO BE  
LUBRICATED WITH ASPHALTIC CUT-BACK  
19.1mm @ 300 O.C. FOR PAVEMENTS D<200  
28.6mm @ 300 O.C. FOR PAVEMENTS D≥200

EXTENSION OF LONGITUDINAL BAR  
TO BE LUBRICATED WITH ASPHALTIC  
CUT-BACK PRIOR TO CONCRETE  
PLACEMENT

BAR MAT 'B' REINFORCEMENT  
REF. SD-217

SAWN JOINT REF. SD-212



BAR MAT 'A' REINFORCEMENT  
REF. SD-217

CONTRACTION JOINT MAT "B"

DIMENSIONS IN MILLIMETRES



**THE CITY OF WINNIPEG**  
PUBLIC WORKS DEPARTMENT

Reference Spec. No.  
CW 3230, CW 3310

Revisions

No.	Date	Description	By

CONTRACTION JOINT  
FOR REINFORCED  
CONCRETE PAVEMENT

Designed By:  
A.G.

Drawn By:  
R.B.

Scale :  
N.T.S.

Checked By:  
B.K.

Date:  
2025-12-15

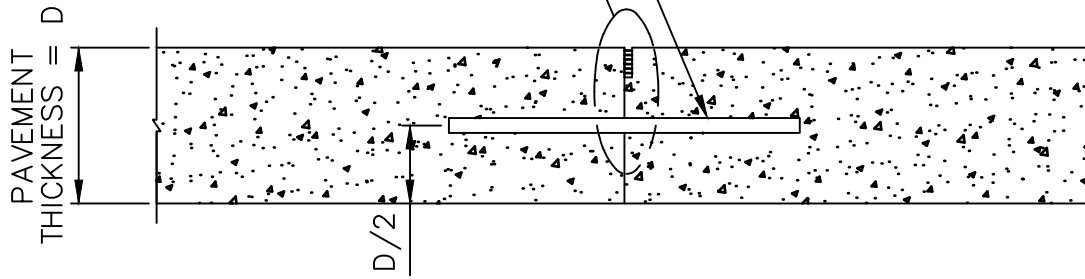
Drawing No.

Approved:  
PAVEMENT MANAGEMENT BRANCH

SD-211B

BUTT JOINT REF. SD-212

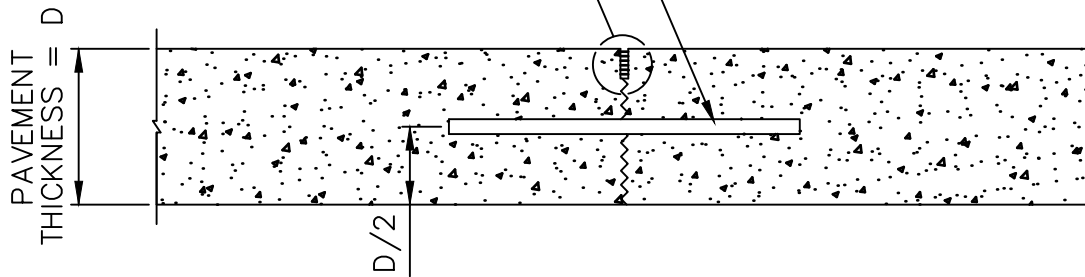
450 LONG DOWELS TO BE LUBRICATED WITH ASPHALTIC CUT-BACK  
 19.1mm @ 300 O.C. FOR PAVEMENTS  $D < 200$   
 28.6mm @ 300 O.C. FOR PAVEMENTS  $D \geq 200$



CONSTRUCTION JOINT

SAWN JOINT REF. SD-212

450 LONG DOWELS TO BE LUBRICATED WITH ASPHALTIC CUT-BACK  
 19.1mm @ 300 O.C. FOR PAVEMENTS  $D < 200$   
 28.6mm @ 300 O.C. FOR PAVEMENTS  $D \geq 200$



CONTRACTION JOINT

NOTE: DOWEL ASSEMBLIES NOT SHOWN.

DIMENSIONS IN MILLIMETRES



**THE CITY OF WINNIPEG**  
 PUBLIC WORKS DEPARTMENT

Reference Spec. No.  
 CW 3230, CW 3310

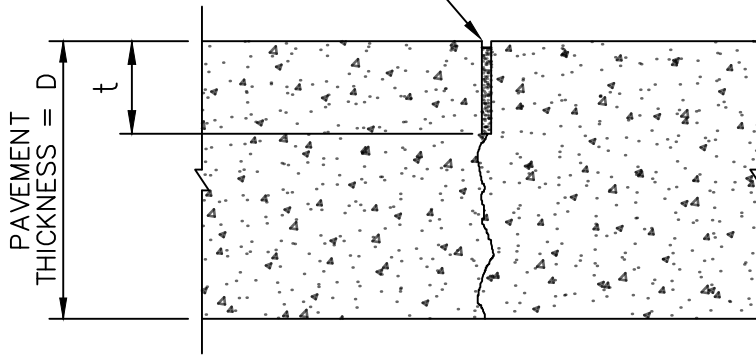
Revisions			
No.	Date	Description	By
1.	OCT 24	GENERAL REVISION	A.G.

CONSTRUCTION JOINT AND  
 CONTRACTION JOINT FOR  
 PLAIN DOWELLED  
 CONCRETE PAVEMENT

Designed By: L.S.W.L.	Drawn By: R.B.	Scale : N.T.S.
Checked By: D.R.K.	Date: 2025-12-15	Drawing No.
Approved: PAVEMENT MANAGEMENT BRANCH		SD-211C

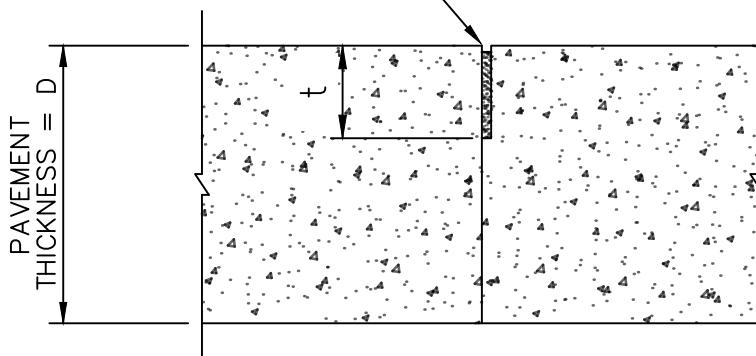
TRANSVERSE JOINT:  $t=D/3$   
 LONGITUDINAL JOINT:  $t=D/4$

SEE DETAIL "A"

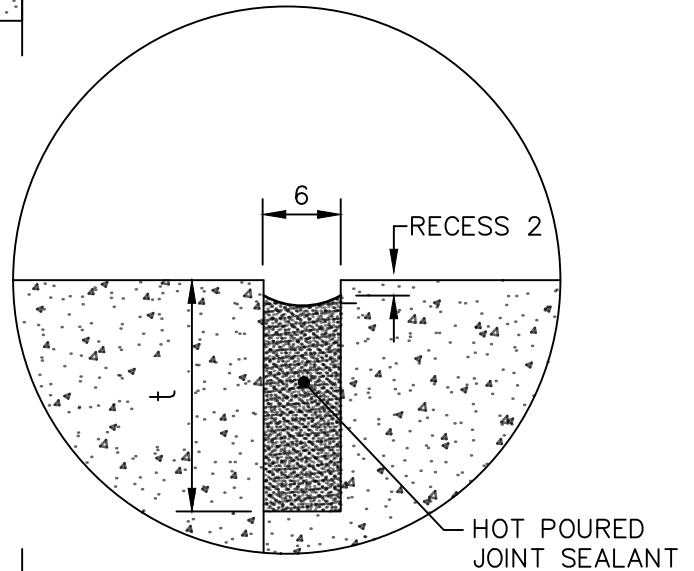


SAWN JOINT

SEE DETAIL "A"



BUTT JOINT



DETAIL "A"

NOTES:

1. SEALING OF CONCRETE JOINTS NOT REQUIRED IF THE JOINTS ARE BEING OVERLAYED WITH ASPHALT.
2. REINFORCING NOT SHOWN.

DIMENSIONS IN MILLIMETRES



**THE CITY OF WINNIPEG**  
 PUBLIC WORKS DEPARTMENT

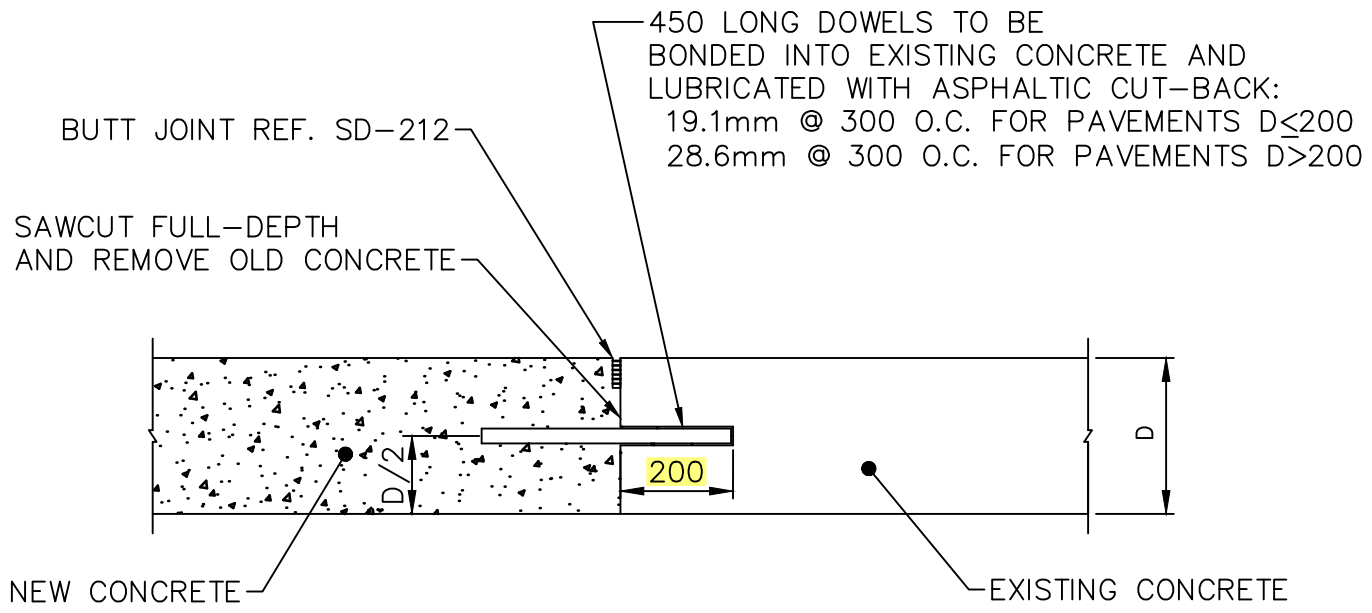
Reference Spec. No.  
 CW 3230, CW 3310

Revisions

No.	Date	Description	By
2.	MAY 25	SAW CUT WIDTH AND DEPTH	R.B.
1.	OCT 06	GENERAL REVISION	L.W.B.

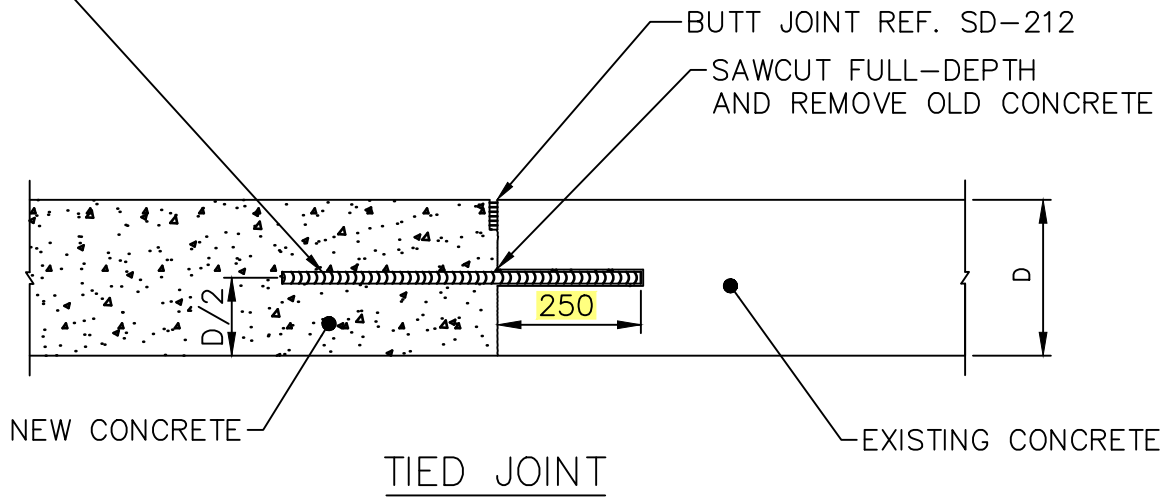
SAWN JOINT AND BUTT JOINT FOR  
 CONCRETE PAVEMENTS

Designed By: A.G.	Drawn By: R.B.	Scale : N.T.S.
Checked By: B.K.	Date: 2025-12-15	Drawing No.
Approved: PAVEMENT MANAGEMENT BRANCH		SD-212



TRANSVERSE (MOVING) JOINT

600 LONG TIE BARS:  
 15M @ 600 O.C. FOR PAVEMENTS D<200  
 20M @ 600 O.C. FOR PAVEMENTS D=200  
 25M @ 600 O.C. FOR PAVEMENTS D>200  
 WITH MINIMUM 2 BARS PER SIDE



TIED JOINT

NOTE:  
 BAR MAT REINFORCEMENT  
 NOT SHOWN REF. SD-217

DIMENSIONS IN MILLIMETRES



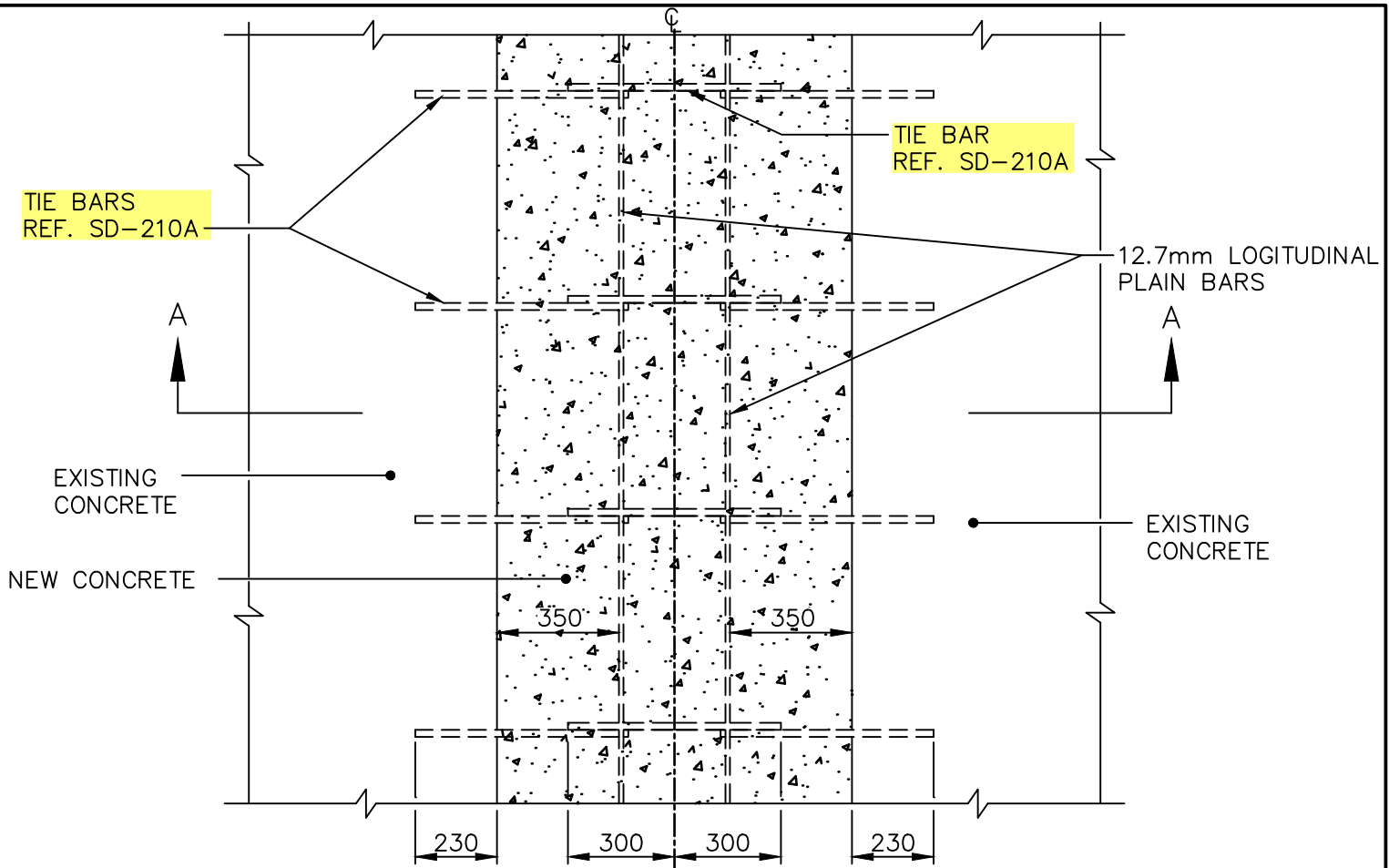
**THE CITY OF WINNIPEG**  
 PUBLIC WORKS DEPARTMENT

Reference Spec. No.  
 CW 3230, CW 3310

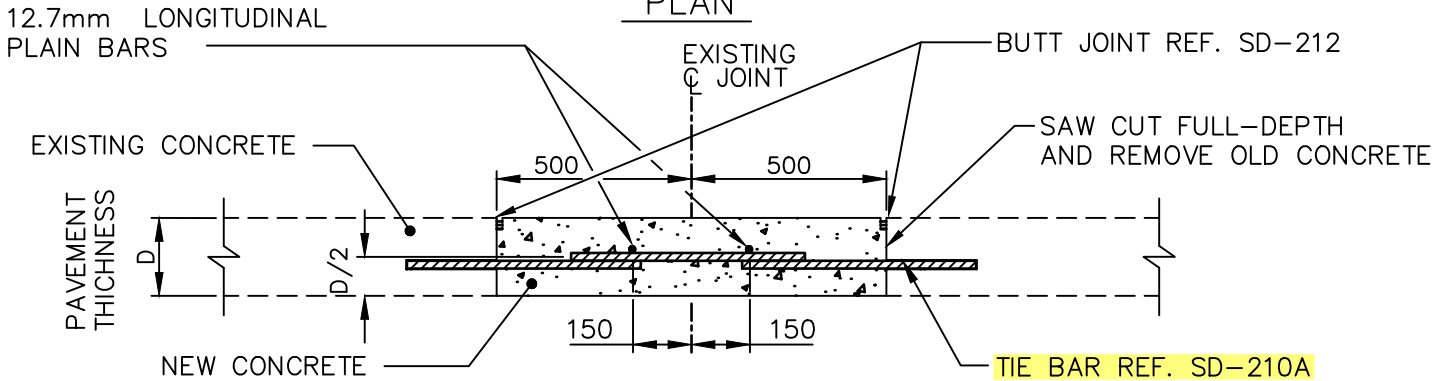
Revisions			
No.	Date	Description	By
2.	OCT 24	TIE BAR DETAILS	A.G.
1.	OCT 13	GENERAL REVISION	L.W.B.

FULL-DEPTH PATCHES AND  
 SLAB REPLACEMENT

Designed By: B.P.	Drawn By: R.B.	Scale : N.T.S.
Checked By: D.R.K.	Date: 2025-12-15	Drawing No. SD-213B
Approved: PAVEMENT MANAGEMENT BRANCH		



PLAN



SECTION A-A

NOTE:

1. IF JOINT REPAIR IS GREATER THAN 1000 WIDE ON EITHER SIDE OF THE JOINT, USE ADDITIONAL 12.7mm LONGITUDINAL PLAIN BARS AT 450 O.C. OR USE BAR MAT REF. SD-217.
2. INSTALL DOWELS AT PATCH ENDS, REF. SD-213B.

DIMENSIONS IN MILLIMETRES



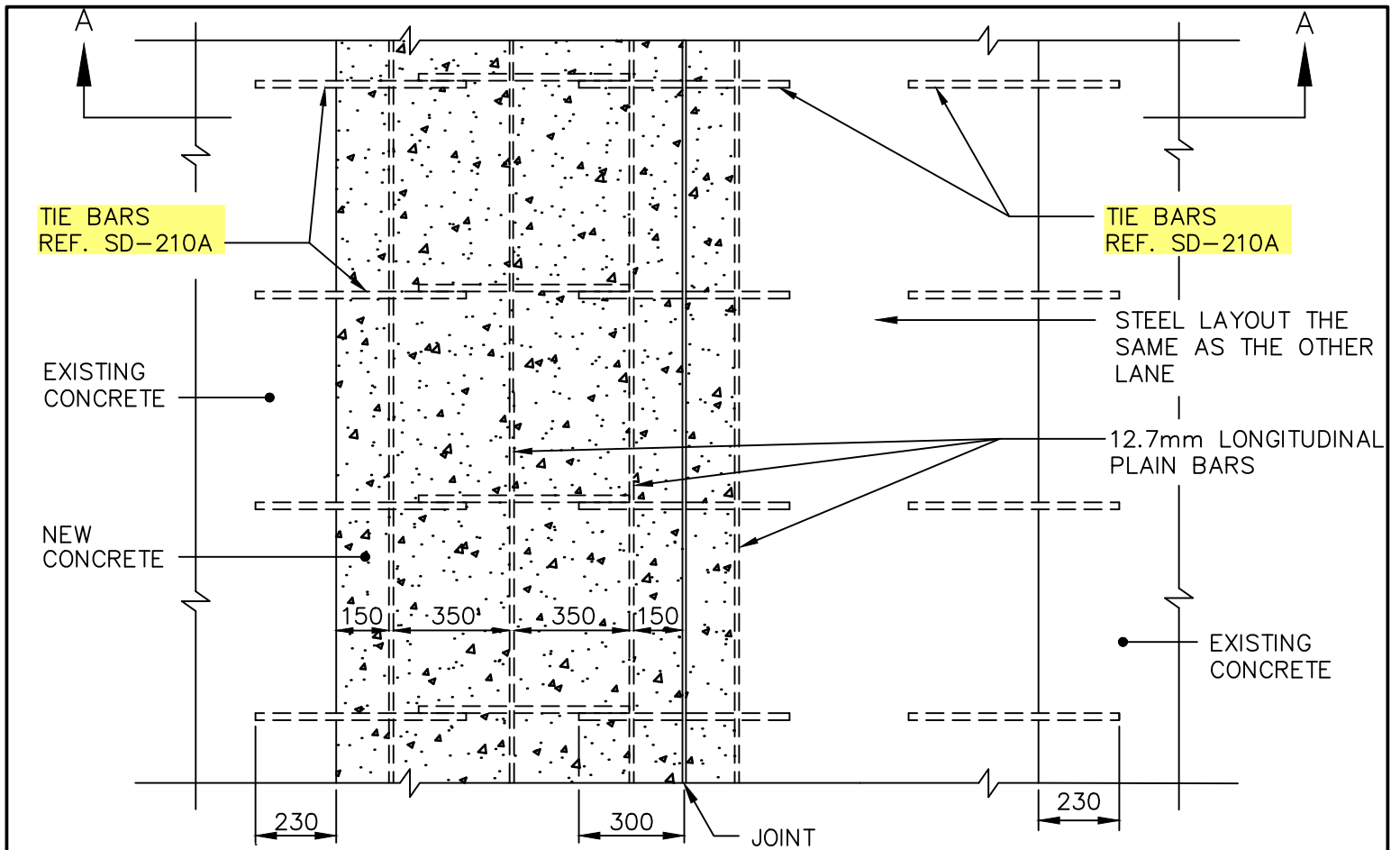
**THE CITY OF WINNIPEG**  
PUBLIC WORKS DEPARTMENT

Reference Spec. No.  
CW 3230, CW 3310

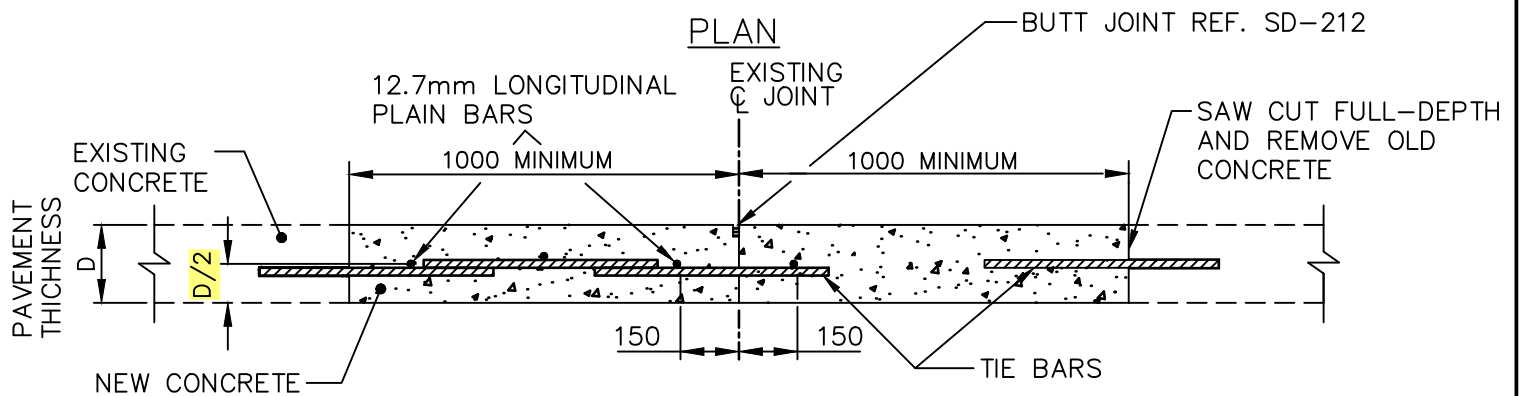
Revisions			
No.	Date	Description	By
3.	OCT 24	TIE BAR DETAILS	A.G.
2.	FEB 04	GENERAL REVISION	J.G.
1.	JAN 03	GENERAL REVISION	A.P.

LONGITUDINAL JOINT  
REPAIR DETAILS  
FULL-WIDTH PATCH  
(BOTH SIDES AT SAME TIME)

Designed By: L.S.W.L.	Drawn By: R.B.	Scale : N.T.S.
Checked By: B.P.	Date: 2025-12-15	Drawing No. SD-214A
Approved: PAVEMENT MANAGEMENT BRANCH		



PLAN



SECTION A-A

NOTE:

1. IF JOINT REPAIR IS GREATER THAN 1000 WIDE ON EITHER SIDE OF THE JOINT, USE ADDITIONAL 12.7mm LONGITUDINAL PLAIN BARS AT 450 O.C. OR USE BAR MAT REF. SD-217.
2. INSTALL DOWELS AT PATCH ENDS, REF. SD-213B.

DIMENSIONS IN MILLIMETRES



**THE CITY OF WINNIPEG**  
PUBLIC WORKS DEPARTMENT

Reference Spec. No.  
CW 3230, CW 3310

Revisions

No.	Date	Description	By
1.	OCT 24	TIE BAR DETAILS AND LOCATION	A.G.

LONGITUDINAL JOINT  
REPAIR DETAILS  
LANE-AT-A-TIME PATCH

Designed By:  
L.S.W.L.

Drawn By:  
R.B.

Scale :  
N.T.S.

Checked By:  
B.P.

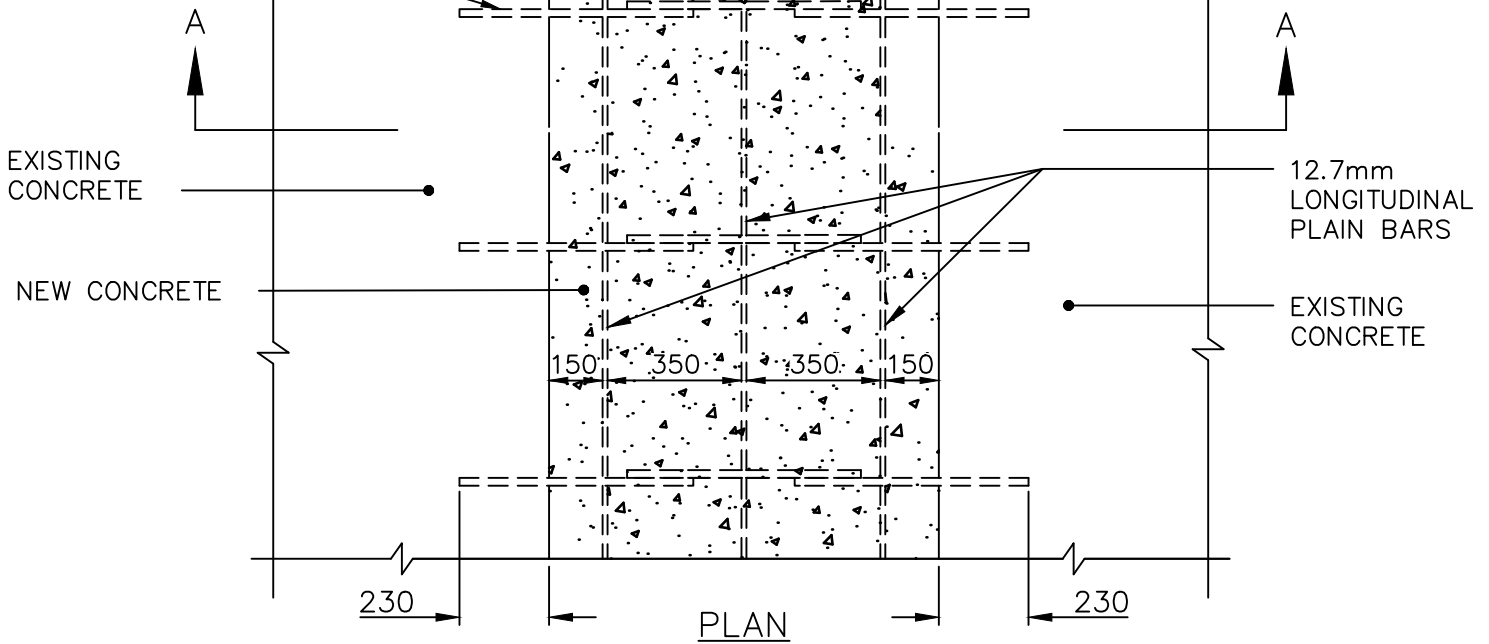
Date:  
2025-12-15

Drawing No.

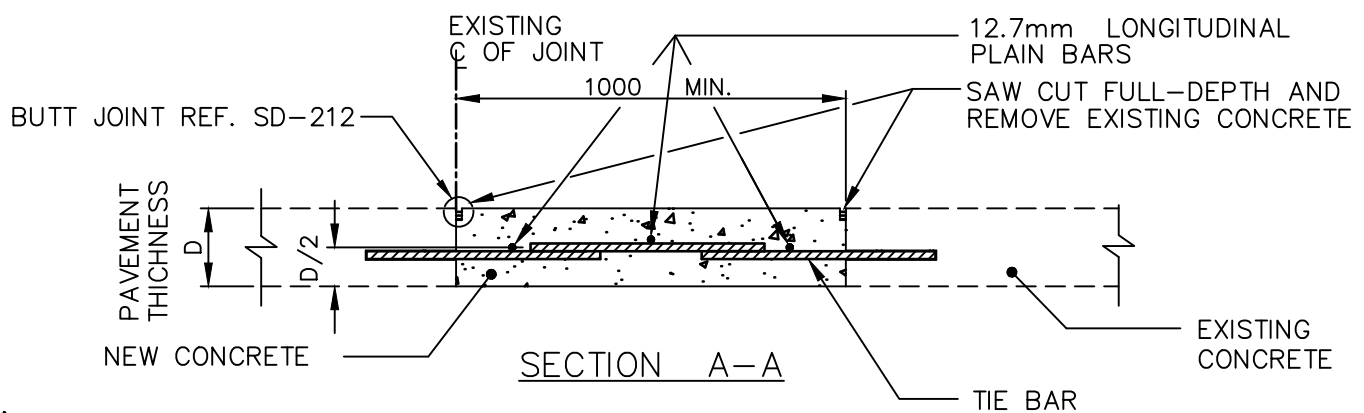
Approved:  
PAVEMENT MANAGEMENT BRANCH

SD-214B

TIE BARS  
REF. SD-210A



PLAN



SECTION A-A

NOTE:

1. IF JOINT REPAIR IS GREATER THAN 1000 WIDE ON EITHER SIDE OF THE JOINT, USE ADDITIONAL 12.7mm LONGITUDINAL PLAIN BARS AT 450 O.C. OR USE BAR MAT REF. SD-217.
2. INSTALL DOWELS AT PATCH ENDS, REF. SD-213B.

DIMENSIONS IN MILLIMETRES



**THE CITY OF WINNIPEG**  
PUBLIC WORKS DEPARTMENT

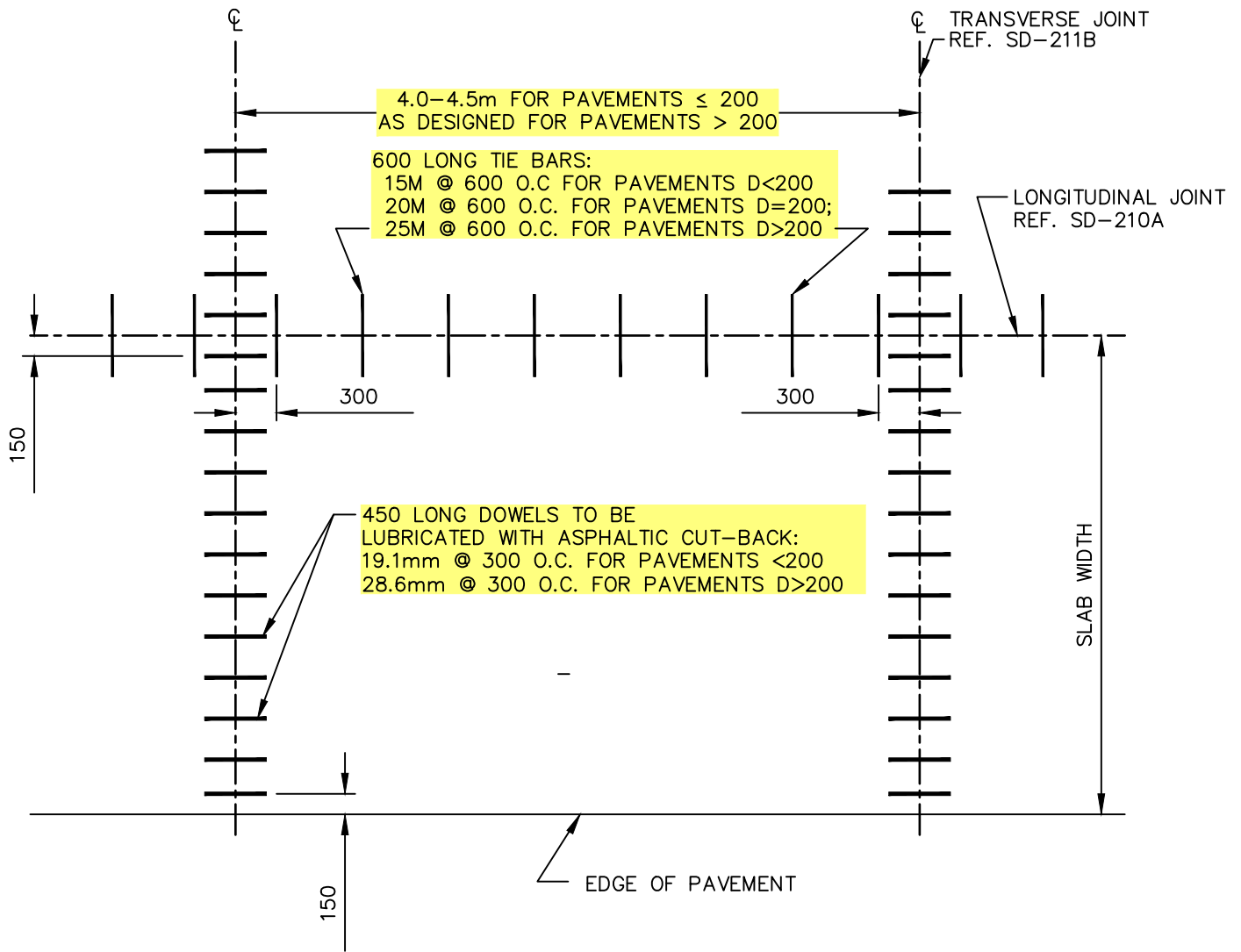
Reference Spec. No.  
CW 3230, CW 3310

Revisions

No.	Date	Description	By
3.	OCT 24	TIE BAR DETAILS	A.G.
2.	FEB 04	GENERAL REVISION	J.G.
1.	JAN 03	GENERAL REVISION	L.W.B.

LONGITUDINAL JOINT PATCH DETAILS  
ONE SIDE ONLY

Designed By: L.S.W.L.	Drawn By: R.B.	Scale : N.T.S.
Checked By: B.P.	Date: 2025-12-15	Drawing No. SD-214C
Approved: PAVEMENT MANAGEMENT BRANCH		



**THE CITY OF WINNIPEG**  
PUBLIC WORKS DEPARTMENT

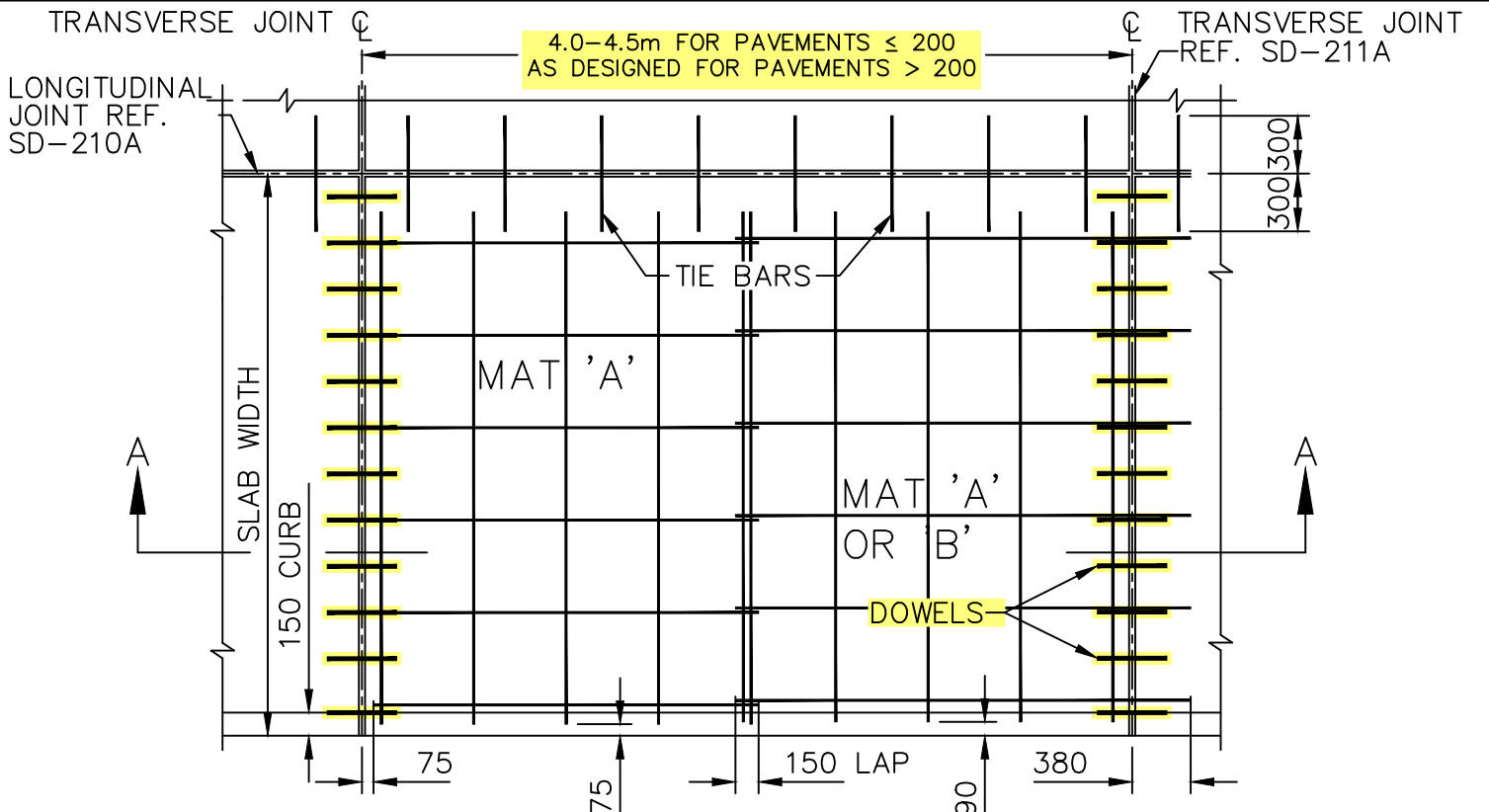
Reference Spec. No.  
CW 3230, CW 3310

Revisions

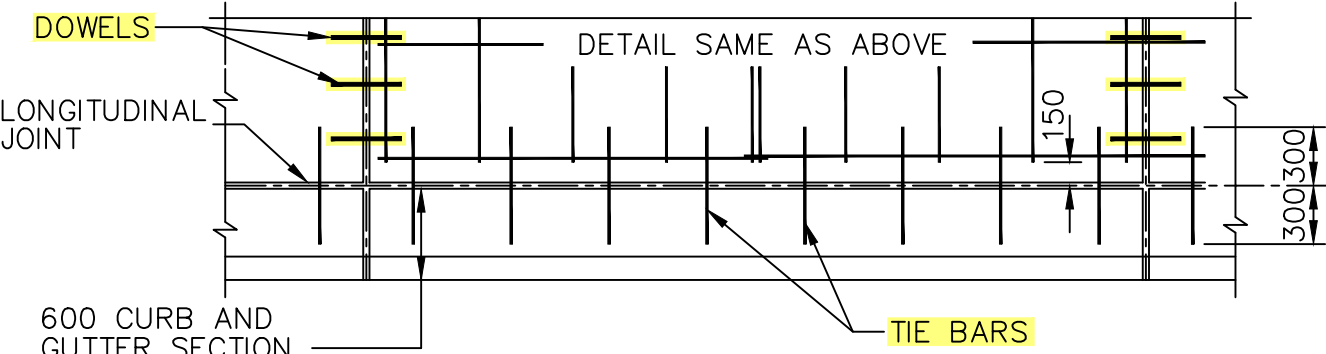
No.	Date	Description	By
2.	OCT 24	TIE BAR AND DOWEL DETAILS	R.B.
1.	DEC 31	GENERAL REVISION	A.R.

LOAD TRANSFER DEVICE FOR  
PLAIN DOWELLED CONCRETE  
PAVEMENT

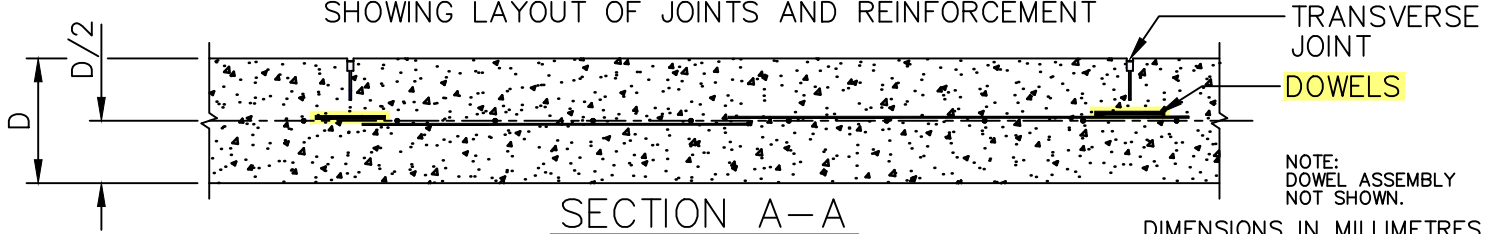
Designed By: A.G.	Drawn By: R.B.	Scale : N.T.S.
Checked By: B.K.	Date: 2025-12-15	Drawing No. SD-215
Approved: PAVEMENT MANAGEMENT BRANCH		



PART PLAN OF PAVEMENT WITH CURB  
SHOWING LAYOUT OF JOINTS AND REINFORCEMENT



PART PLAN OF PAVEMENT WITH CURB AND GUTTER  
SHOWING LAYOUT OF JOINTS AND REINFORCEMENT



SECTION A-A  
DIMENSIONS IN MILLIMETRES



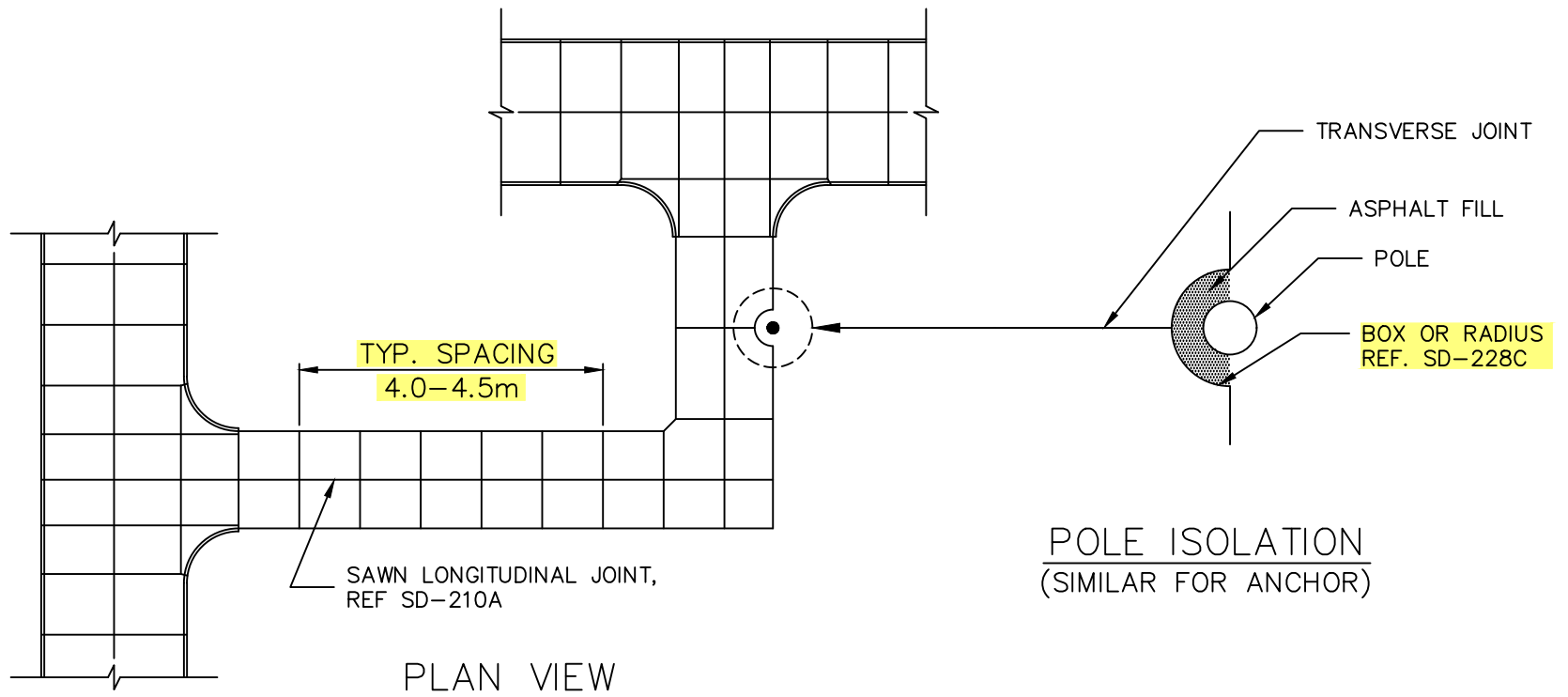
**THE CITY OF WINNIPEG**  
PUBLIC WORKS DEPARTMENT

Reference Spec. No.  
CW 3230, CW 3310

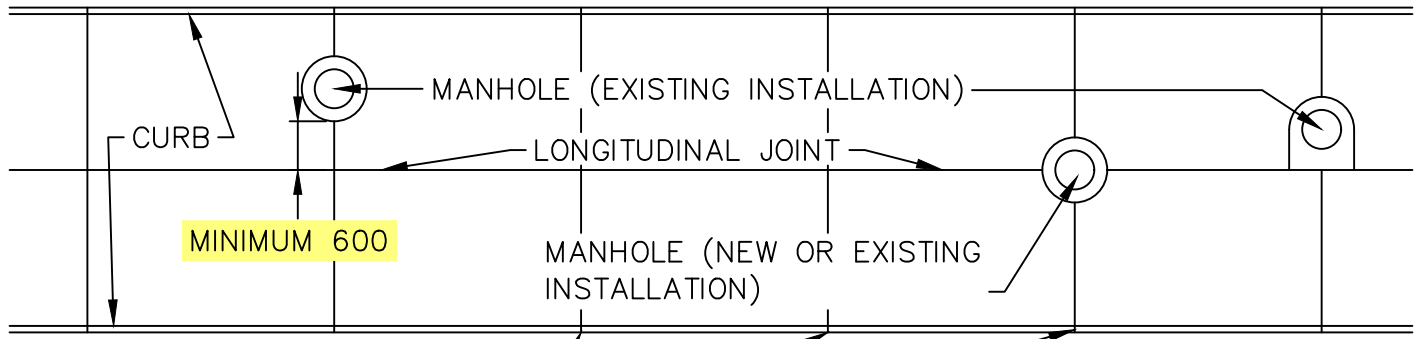
Revisions			
No.	Date	Description	By
1.	OCT 24	ADDED DOWELS	R.B.
1.	JAN 03	GENERAL REVISION	L.W.B.

STEEL REINFORCEMENT FOR  
REINFORCED CONCRETE  
PAVEMENT

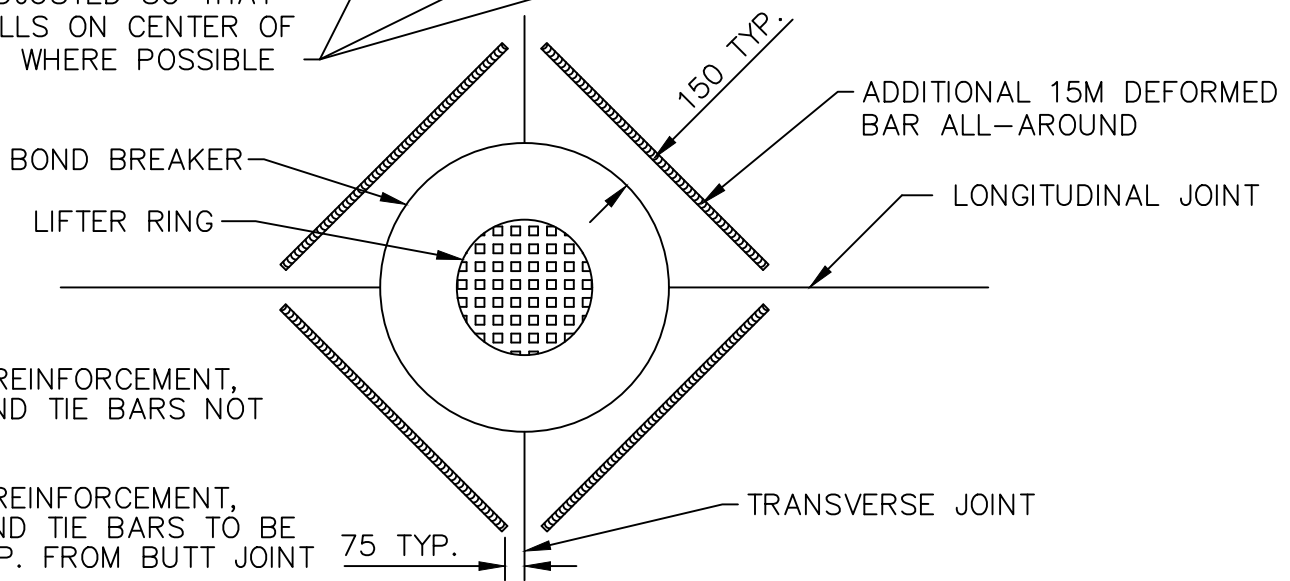
Designed By: A.G.	Drawn By: R.B.	Scale : N.T.S.
Checked By: B.K.	Date: 2025-12-15	Drawing No.
Approved: PAVEMENT MANAGEMENT BRANCH		SD-216



 <b>THE CITY OF WINNIPEG</b> PUBLIC WORKS DEPARTMENT	Revisions		
Reference Spec No. CW 3230, CW 3310	1.	OCT 24	GENERAL REVISION
<b>TYPICAL PUBLIC LANE DETAILS</b>	No.	Date	Description
	By		
	Designed By: S.L.W.L.	Drawn By: R.B.	Scale : N.T.S.
	Checked By: A.G.	Date: 2025-12-15	Drawing No.
	Approved: PAVEMENT MANAGEMENT BRANCH		SD-219



TRANSVERSE JOINT SPACING TO BE ADJUSTED SO THAT JOINT FALLS ON CENTER OF MANHOLE WHERE POSSIBLE

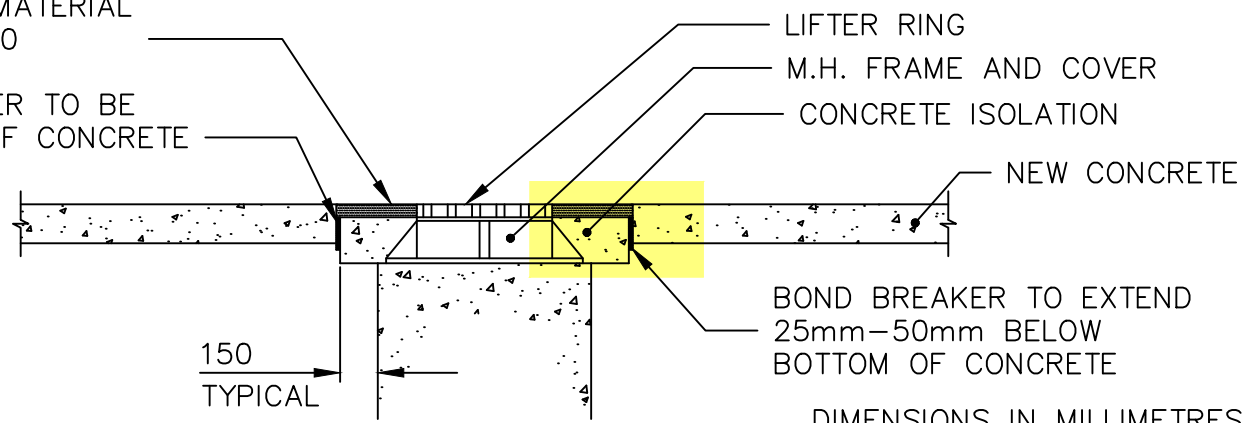


NOTE:

1. BAR MAT REINFORCEMENT, DOWELS AND TIE BARS NOT SHOWN
2. BAR MAT REINFORCEMENT, DOWELS AND TIE BARS TO BE 100mm TYP. FROM BUTT JOINT

ASPHALT MATERIAL MINIMUM 50

BOND BREAKER TO BE BELOW TOP OF CONCRETE AND SEALED



DIMENSIONS IN MILLIMETRES



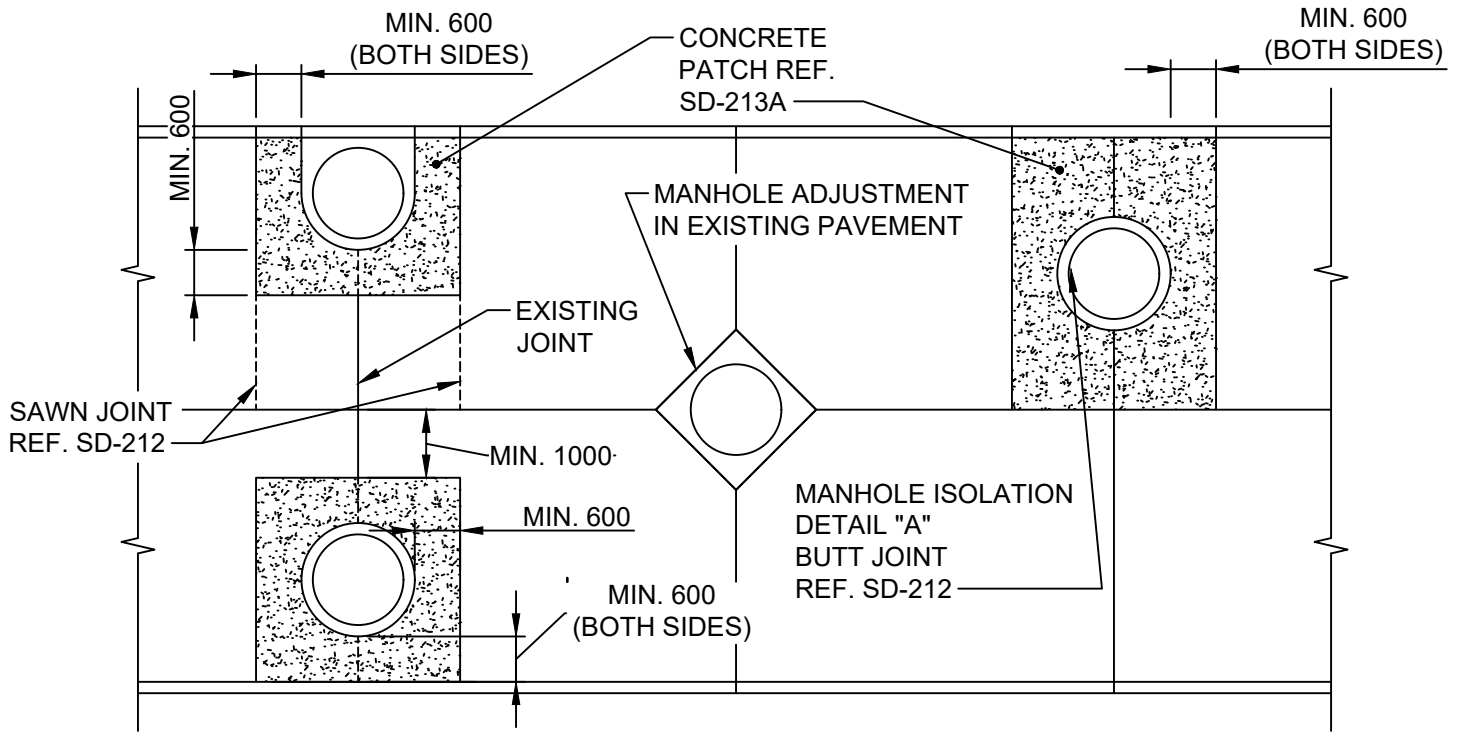
**THE CITY OF WINNIPEG**  
PUBLIC WORKS DEPARTMENT

Reference Spec No.  
CW 3310

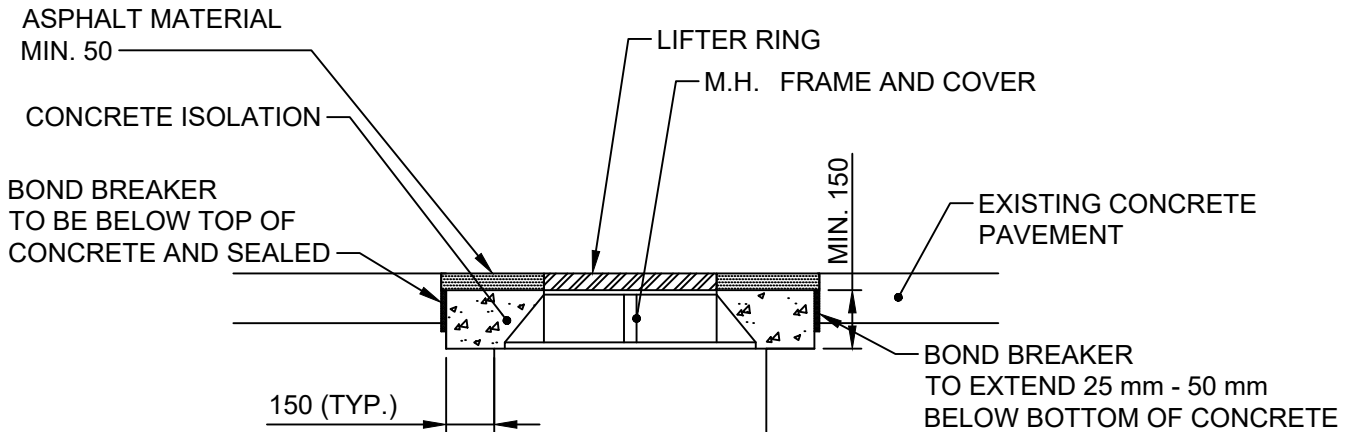
Revisions			
No.	Date	Description	By
2.	DEC 25	GENERAL REVISION	A.G.
1.	JAN 03	GENERAL REVISION	L.W.B.

MANHOLE ISOLATION  
DETAIL FOR CONCRETE  
PAVEMENTS

Designed By: L.S.W.L.	Drawn By: R.B.	Scale : N.T.S.
Checked By: D.R.K.	Date: 2025-12-15	Drawing No. SD-220A
Approved: PAVEMENT MANAGEMENT BRANCH		



**ISOLATION FOR M.H.  
ADJUSTMENT OR RESTORATION**



**DETAIL "A"**

DIMENSIONS IN MILLIMETRES



**THE CITY OF WINNIPEG**  
PUBLIC WORKS DEPARTMENT

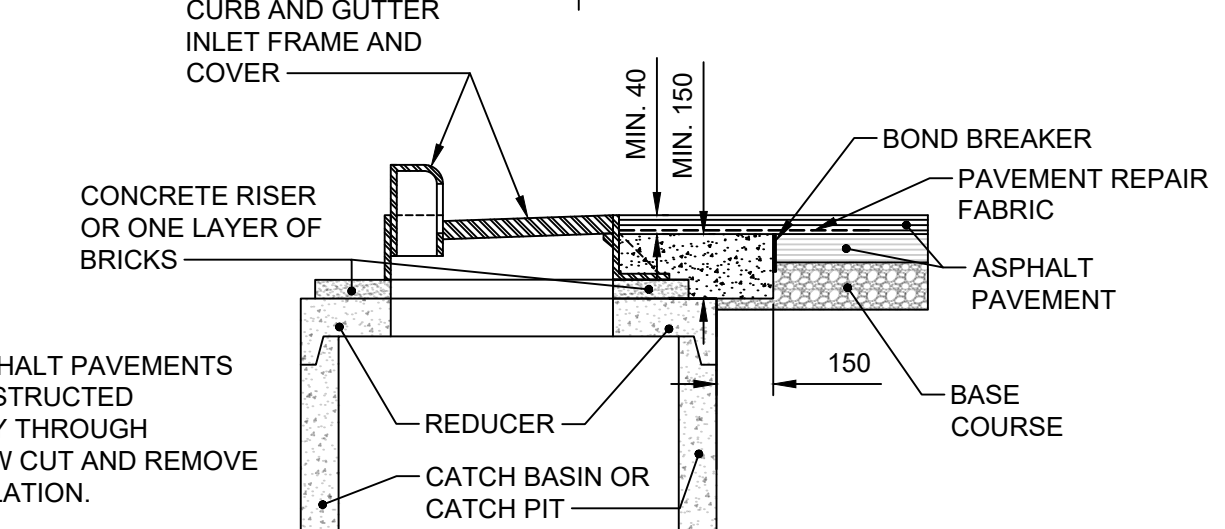
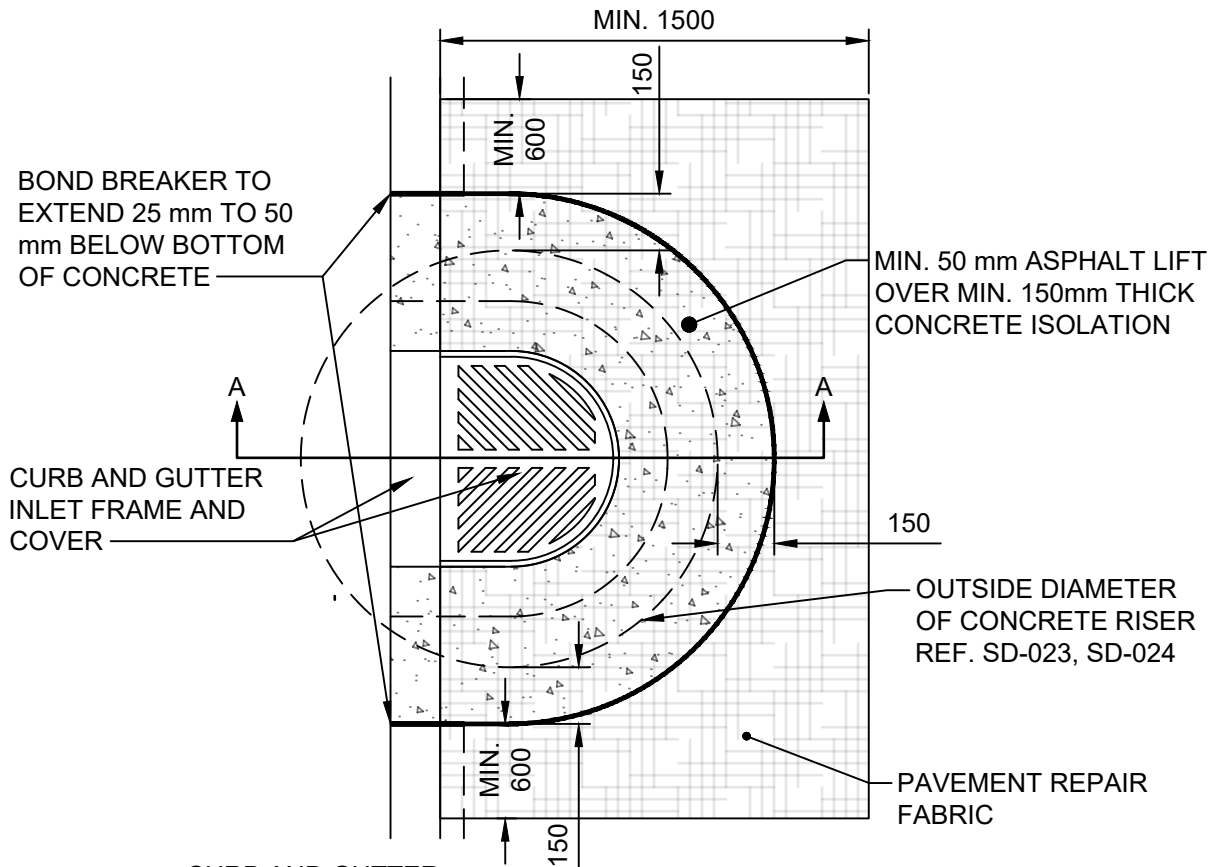
Reference Spec. No.  
CW 3210, CW 3230, CW 3310

Revisions

No.	Date	Description	By
1.	DEC 25	GENERAL REVISION	R.B.

MANHOLE ISOLATION DETAIL  
IN EXISTING PAVEMENTS

Designed By: A.G.	Drawn By: R.B.	Scale : N.T.S.
Checked By: B.K.	Date: 2025-12-15	Drawing No. SD-220B
Approved: PAVEMENT MANAGEMENT BRANCH		



**NOTE:**  
CURB FOR ASPHALT PAVEMENTS SHALL BE CONSTRUCTED CONTINUOUSLY THROUGH ISOLATION. SAW CUT AND REMOVE CURB FOR ISOLATION.

**SECTION A-A**

DIMENSIONS IN MILLIMETRES



**THE CITY OF WINNIPEG**  
PUBLIC WORKS DEPARTMENT

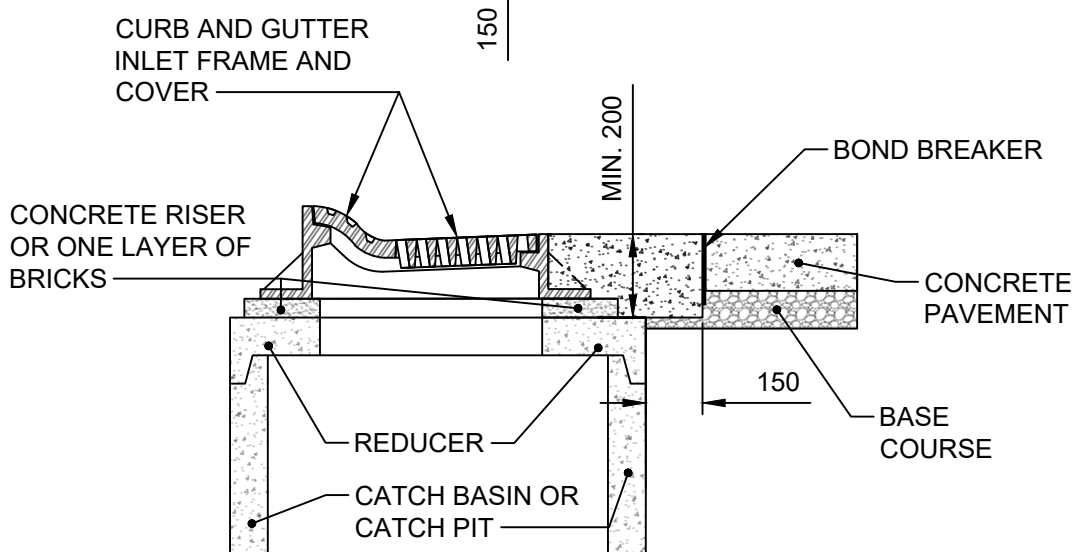
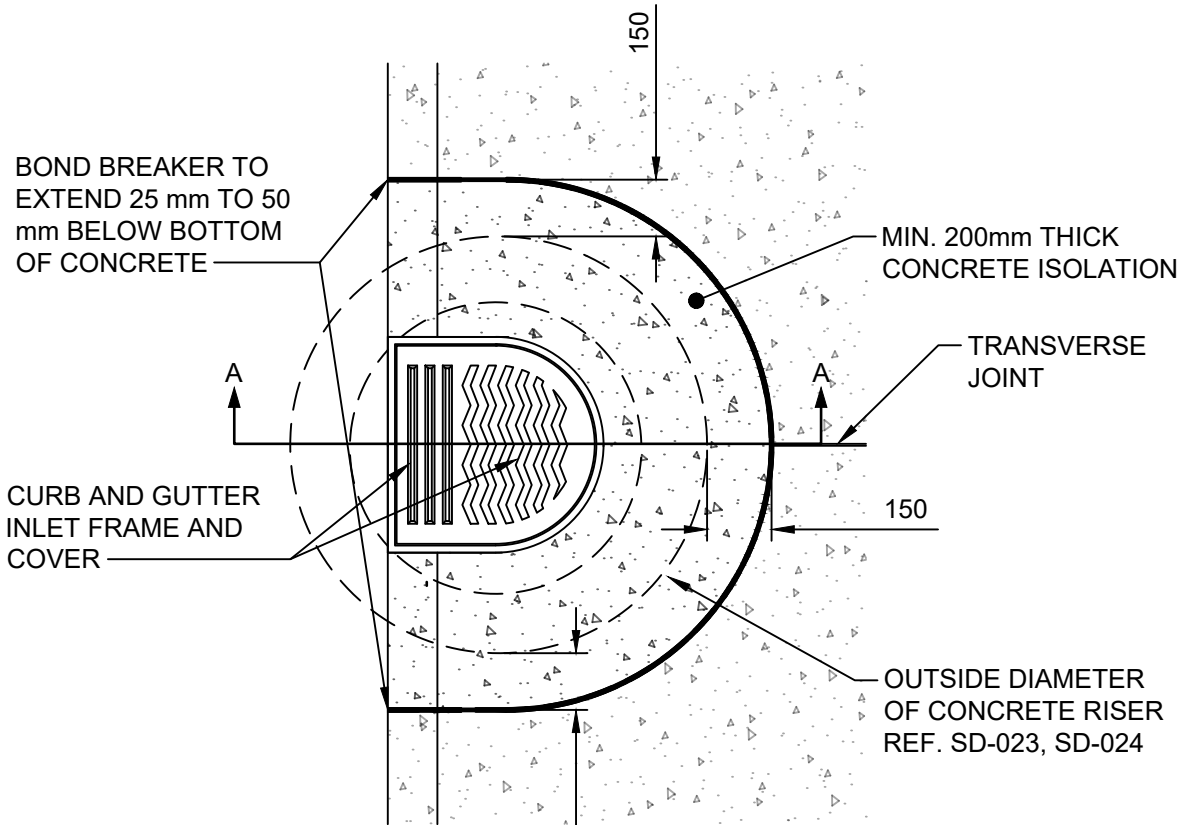
Reference Spec. No.  
CW 3325

Revisions			

**BARRIER CURB AND GUTTER INLET ISOLATION DETAIL FOR NEW ASPHALT PAVEMENTS**

No.	Date	Description	By

Designed By: A.G.	Drawn By: T.K.	Scale : N.T.S.
Checked By: B.K.	Date: 2025-12-15	Drawing No.
Approved: PAVEMENT MANAGEMENT BRANCH		SD-220E



**SECTION A-A**

DIMENSIONS IN MILLIMETRES



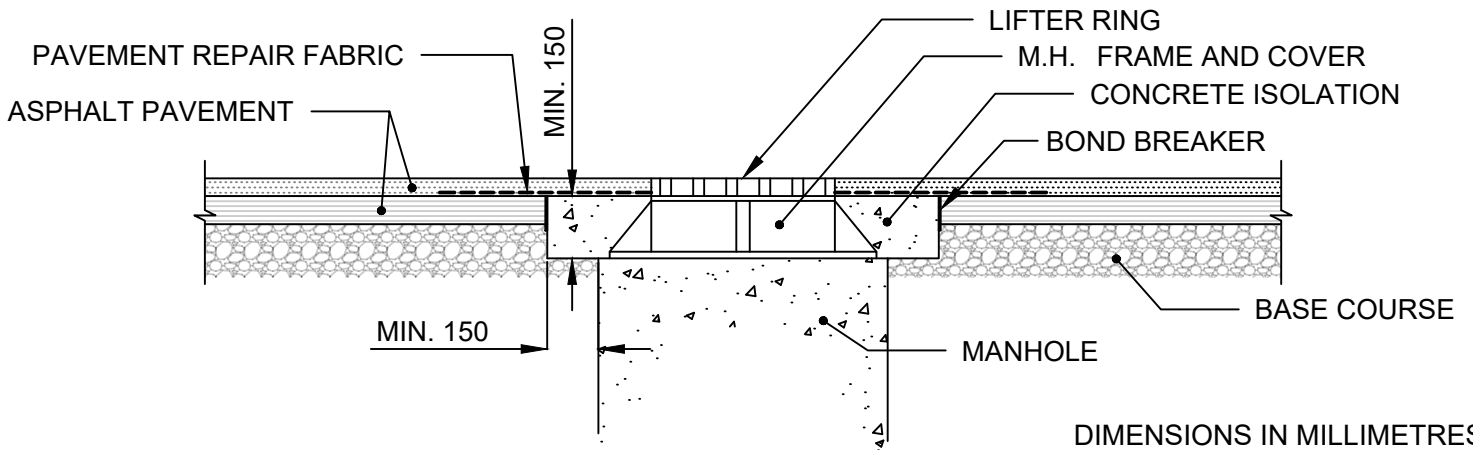
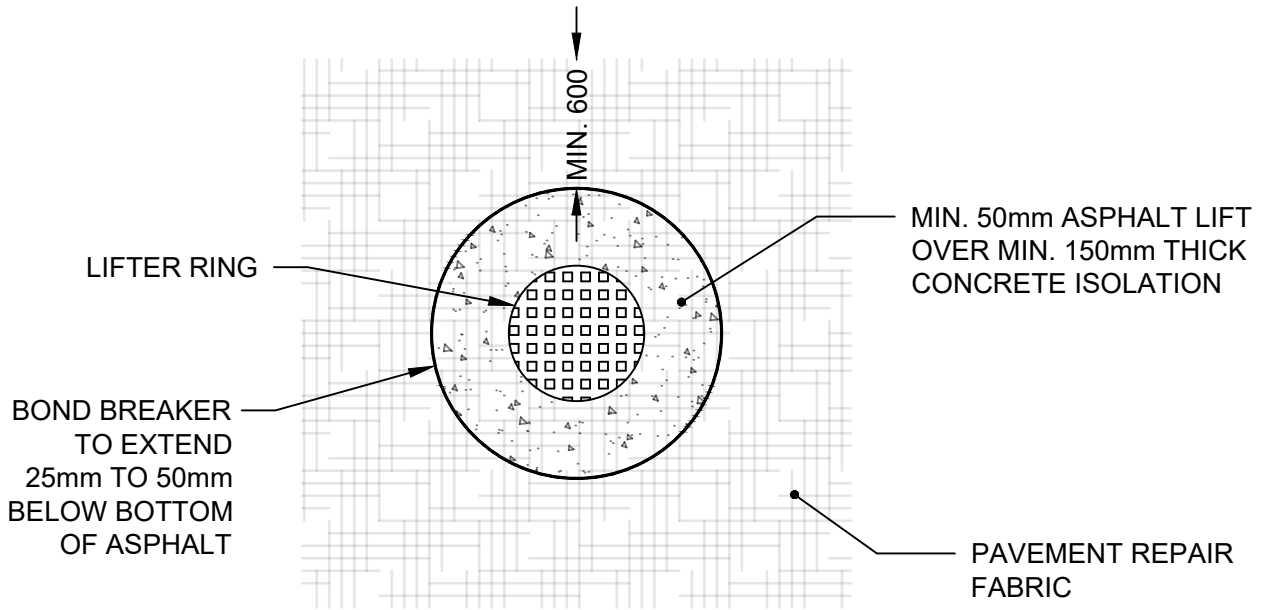
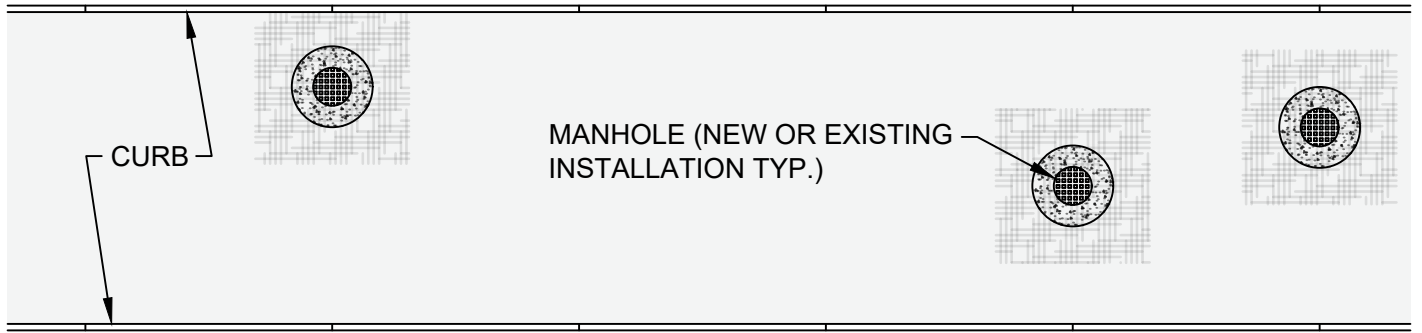
**THE CITY OF WINNIPEG**  
PUBLIC WORKS DEPARTMENT

Reference Spec. No.  
CW 3325

Revisions			
No.	Date	Description	By

LIP CURB AND GUTTER INLET  
ISOLATION DETAIL FOR EXPOSED  
CONCRETE PAVEMENTS

Designed By: A.G.	Drawn By: T.K.	Scale : N.T.S.
Checked By: B.K.	Date: 2025-12-15	Drawing No.
Approved: PAVEMENT MANAGEMENT BRANCH		SD-220F



DIMENSIONS IN MILLIMETRES



**THE CITY OF WINNIPEG**  
PUBLIC WORKS DEPARTMENT

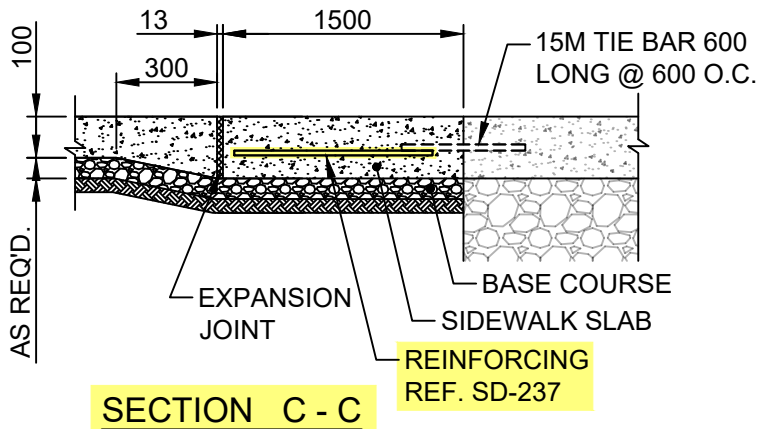
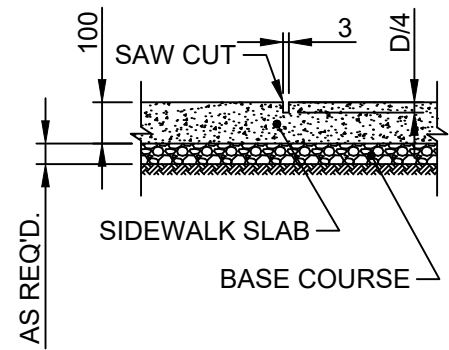
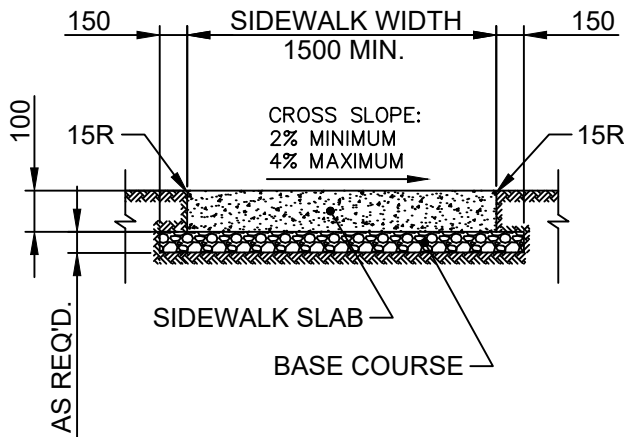
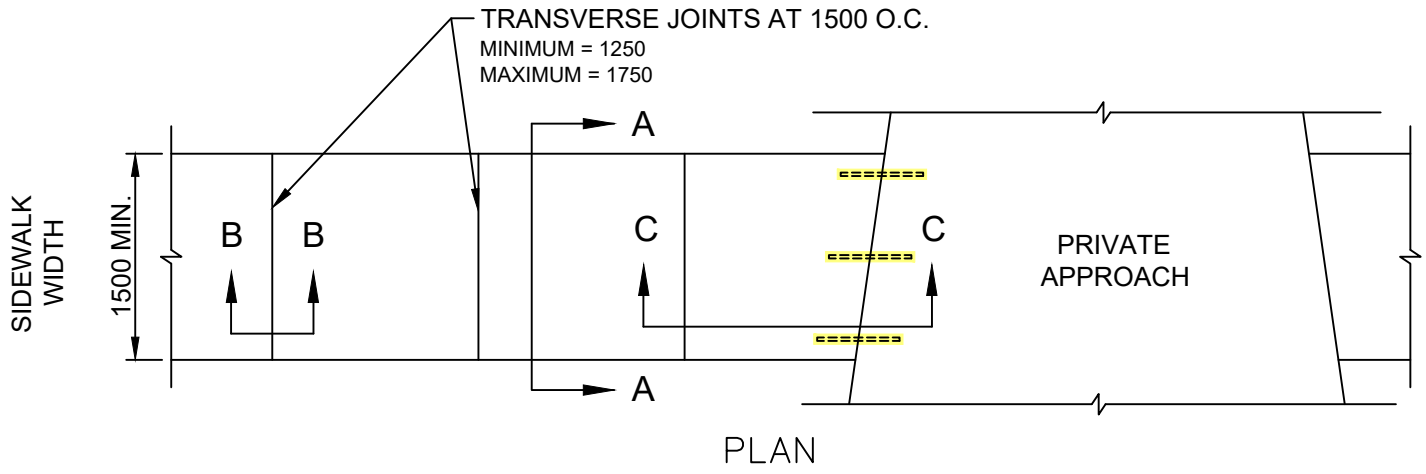
Reference Spec No.  
CW 3310

**MANHOLE ISOLATION  
DETAIL FOR ASPHALT  
PAVEMENTS**

Revisions

No.	Date	Description	By

Designed By: A.G.	Drawn By: T.K.	Scale : N.T.S.
Checked By: B.K.	Date: 2026-1-15	Drawing No. SD-220G
Approved: PAVEMENT MANAGEMENT BRANCH		



NOTE:

1. SIDEWALK SLAB SURFACE WILL BE GIVEN A TEXTURED BROOM FINISH. NO EDGER MARKS WILL BE LEFT
2. LONGITUDINAL JOINTS AT 1500 O.C. MAXIMUM
3. FOR PRIVATE APPROACHES WITH CURBS, CURB RAMPS SHALL BE INSTALLED

DIMENSIONS IN MILLIMETRES

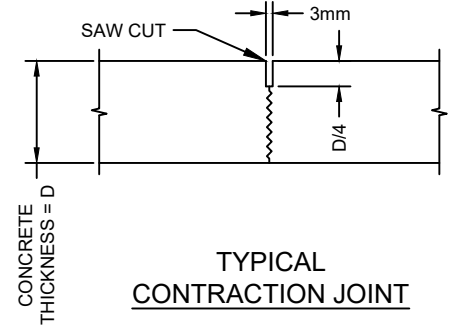
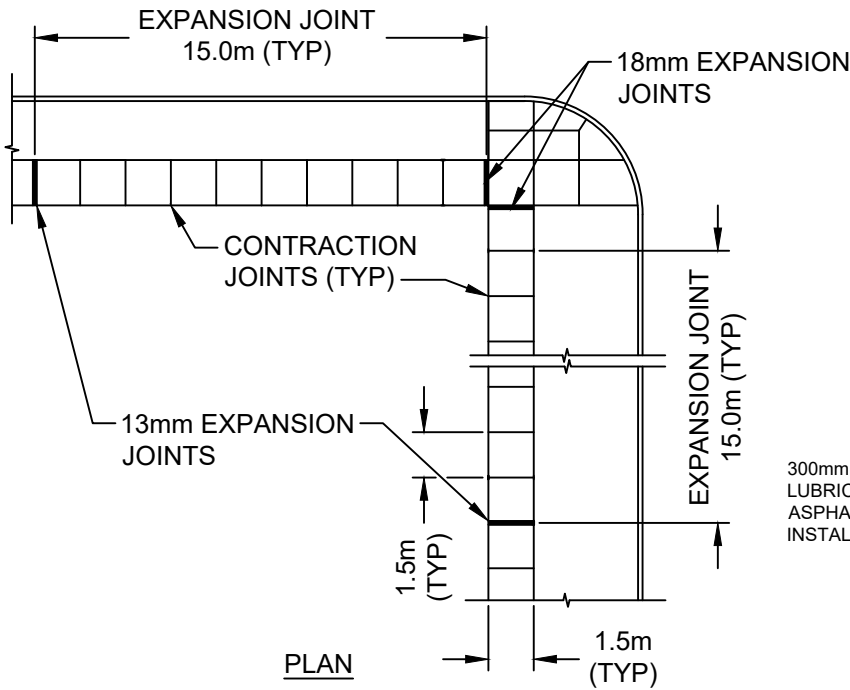


THE CITY OF WINNIPEG  
PUBLIC WORKS DEPARTMENT

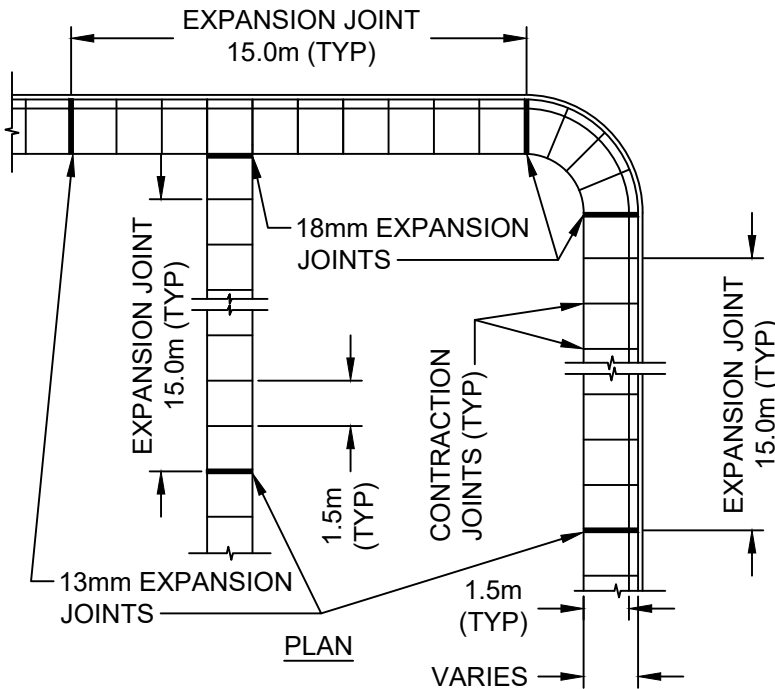
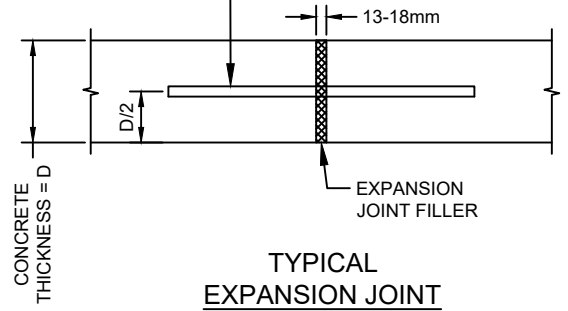
Reference Spec. No.  
CW 3235, CW 3310, CW 3325

CONCRETE SIDEWALK

Revisions			
No.	Date	Description	By
1.	DEC 25	ADDED TIE BARS AND REINFORCING	T.K.
Designed By: A.G. Drawn By: R.B. Scale: N.T.S.			
Checked By: B.K. Date: 2025-12-15 Drawing No. SD-228A			
Approved: PAVEMENT MANAGEMENT BRANCH			



300mm LONG 10M DOWELS  
LUBRICATED WITH  
ASPHALTIC CUT-BACK,  
INSTALLED 450mm O/C



**NOTES:**

1. IF SIDEWALK IS CONSTRUCTED DURING COLD WEATHER CONCRETING PERIOD, EXPANSION JOINTS SHALL BE INSTALLED EVERY 12.0m
2. EXPANSION JOINTS SHALL NOT BE INSTALLED WHEN CONSTRUCTING MONOLITHIC CURB AND SIDEWALK
3. EXPANSION JOINTS SHALL BE INSTALLED WHEN INSTALLING SEPARATE CONCRETE SPLASH STRIP
4. WHEN REPLACING HEAVED PANELS IN AN EXISTING SIDEWALK, EXPANSION JOINTS SHALL BE INSTALLED ON BOTH ENDS OF THE REPLACED PANELS
5. DOWELS SHALL BE DRILLED AND EXPANSION JOINT FILLER INSTALLED WHEN TYING INTO EXISTING SIDEWALK



**THE CITY OF WINNIPEG**  
PUBLIC WORKS DEPARTMENT

Reference Spec. No.  
CW 3325

Revisions

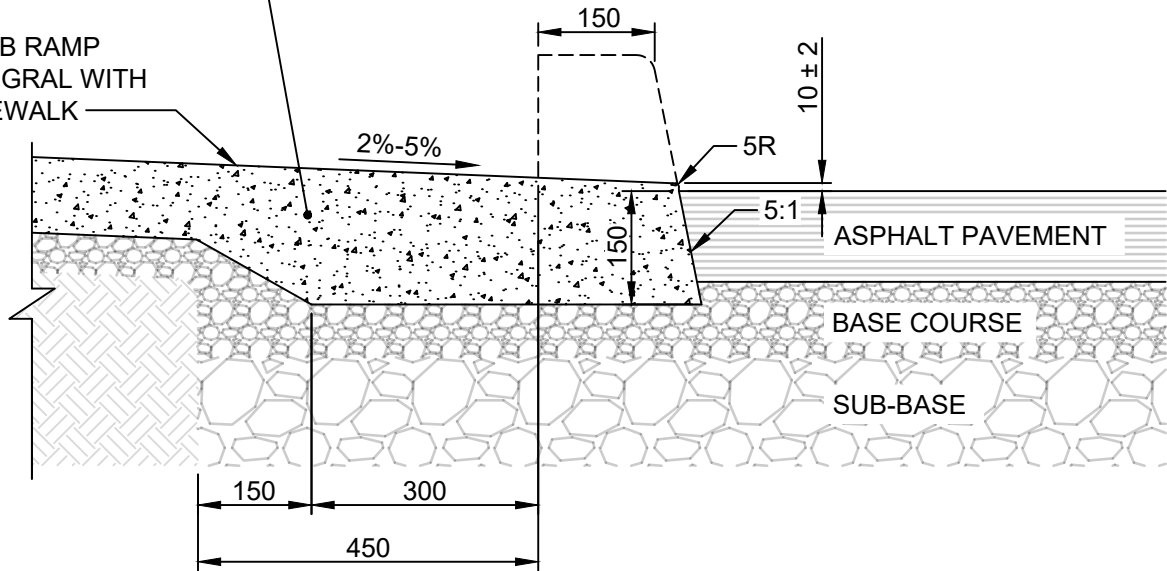
No.	Date	Description	By

**SIDEWALK EXPANSION JOINTS**

Designed By: A.G.	Drawn By: R.B.	Scale : N.T.S.
Checked By: B.K.	Date: 2025-12-15	Drawing No.
Approved: PAVEMENT MANAGEMENT BRANCH		SD-228D

EXISTING OR  
PROPOSED SIDEWALK

CURB RAMP  
INTEGRAL WITH  
SIDEWALK



NOTES:

1. TRANSVERSE SAW CUT EVERY 3m OR AT PAVEMENT JOINTS
2. TRANSVERSE SAW CUTS ARE TO BE A MAXIMUM DEPTH OF 25mm
3. FACE OF CURB SHALL BE SEALED IN ACCORDANCE WITH CW 3250

DIMENSIONS IN MILLIMETRES



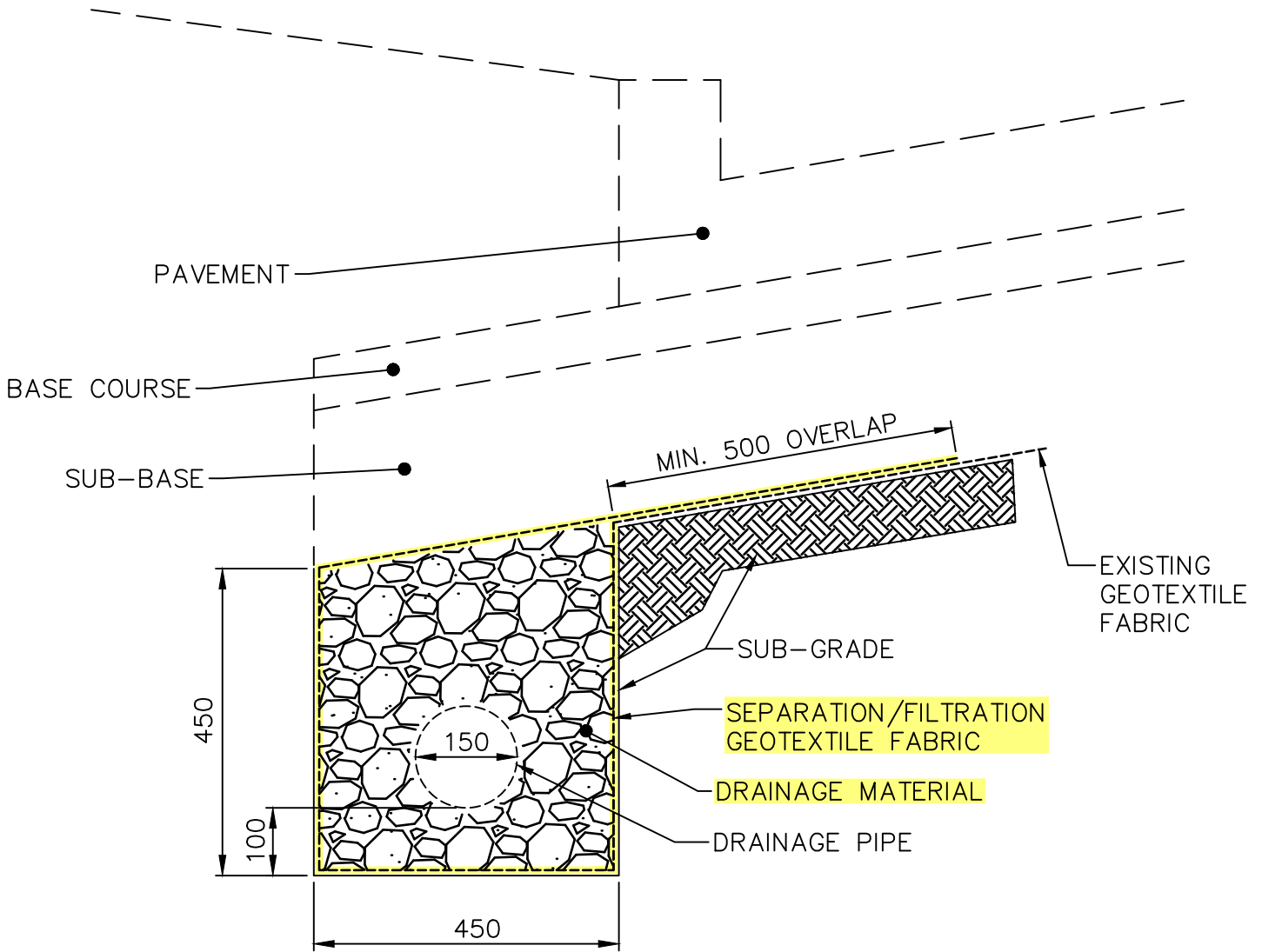
**THE CITY OF WINNIPEG**  
PUBLIC WORKS DEPARTMENT

Reference Spec. No.  
CW 3325

**CURB RAMP FOR  
ASPHALT PAVEMENT**

Revisions			
No.	Date	Description	By

Designed By: A.G.	Drawn By: T.K.	Scale : N.T.S
Checked By: B.K.	Date: 2025-12-15	Drawing No. SD-229F
Approved: PAVEMENT MANAGEMENT BRANCH		



DIMENSIONS IN MILLIMETERS



**THE CITY OF WINNIPEG**  
PUBLIC WORKS DEPARTMENT

Reference Spec. No.  
CW 3110, CW 3120, CW 3130

Revisions

No.	Date	Description	By
1.	DEC 25	GENERAL REVISION	A.G.

SUBDRAIN INSTALLATION  
DETAIL

Designed By: B.P.	Drawn By: R.B.	Scale : N.T.S.
Checked By: A.G.	Date: 2025-12-15	Drawing No.
Approved: PAVEMENT MANAGEMENT BRANCH		SD-245