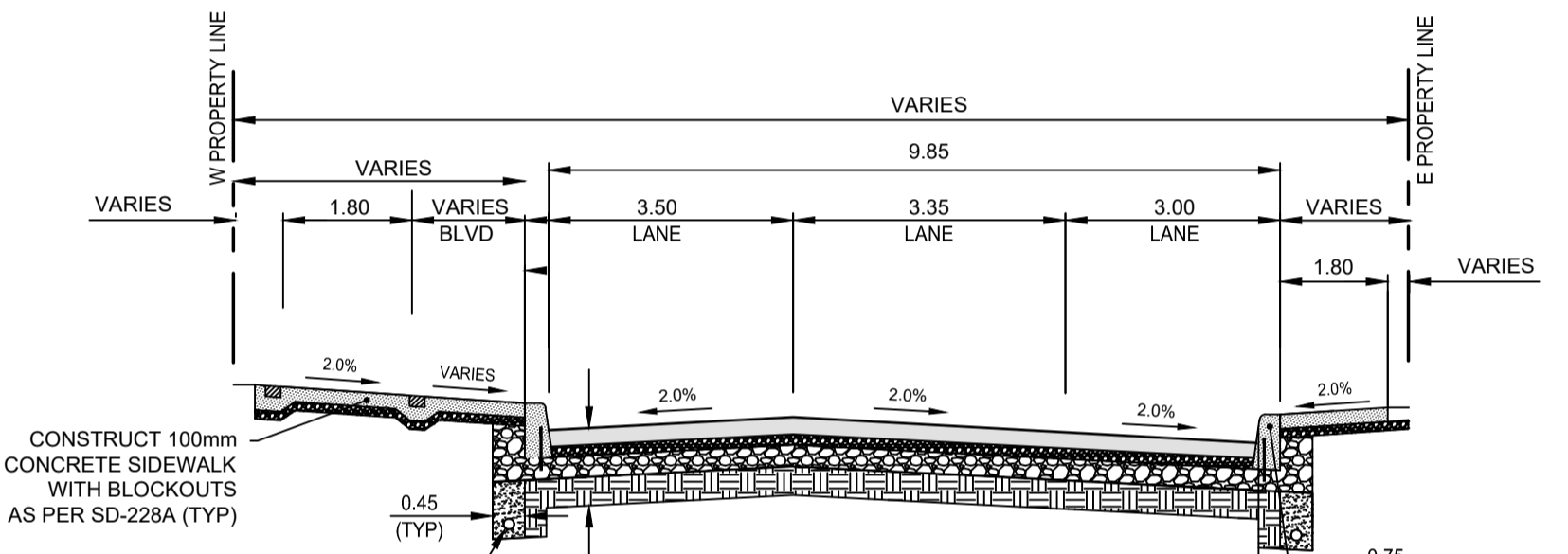
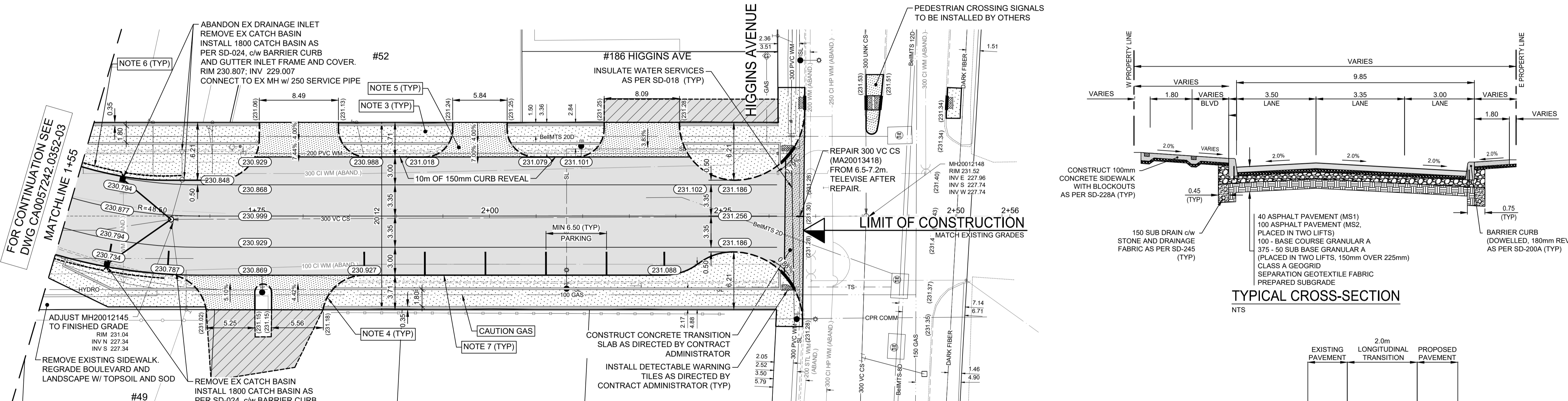
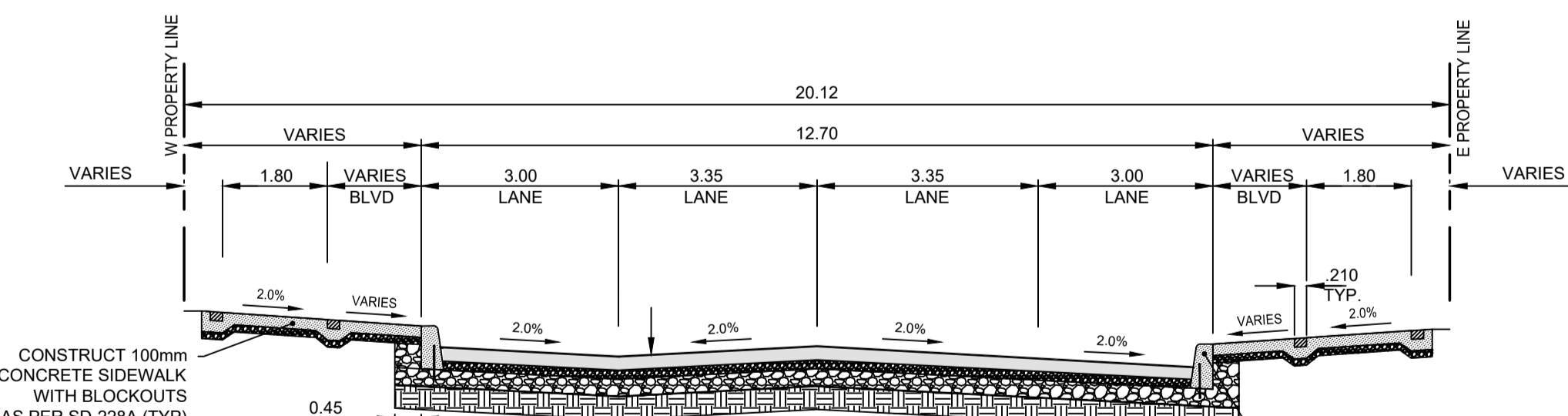


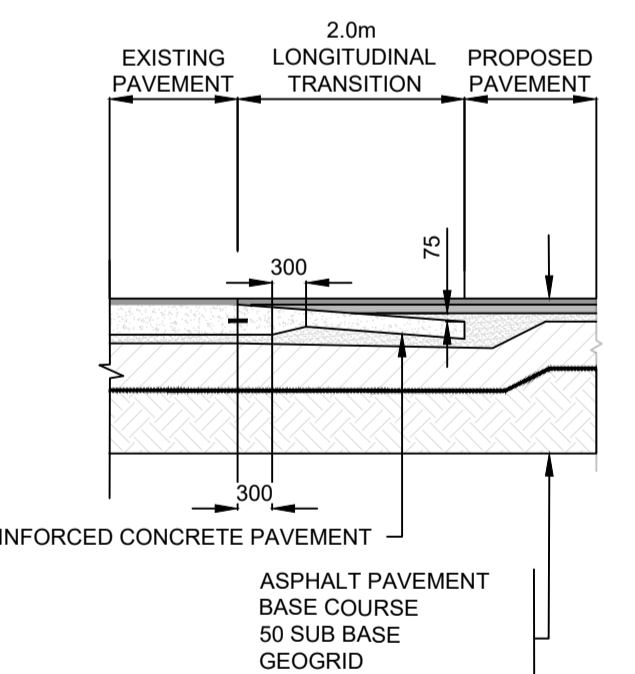
**AUSTIN STREET**



**TYPICAL CROSS-SECTION**  
NTS



**TYPICAL CROSS-SECTION**  
NTS



**TYPICAL TRANSITION SLAB**  
NTS

- NOTES:**
- ALL WORK AND MATERIALS TO BE IN ACCORDANCE WITH THE LATEST REVISION OF THE CITY OF WINNIPEG STANDARD CONSTRUCTION SPECIFICATIONS.
  - ALL ROADWAY DIMENSIONS SHOWN ARE TO BACK OF CURB.
  - EXISTING SIDEWALK TO BE RENEWED AS PER SD-228A AND AS DIRECTED BY CONTRACT ADMINISTRATOR.
  - MODIFIED BARRIER CURB TO BE CONSTRUCTED AT ALL INTERSECTION RADI AND ALLEY RADI.
  - CONSTRUCT 200mm REINFORCED CONCRETE APPROACHES WITH 75mm GRANULAR A BASE COURSE, 300mm - 50mm GRANULAR A SUB-BASE AND SEPARATION/FILTRATION GEOTEXTILE.
  - INSTALL 6.0m SUBDRAINS IN EACH DIRECTION AT ALL CATCH BASIN INSTALLATIONS AS PER CW-3120.
  - CONSTRUCT BARRIER CURB AS PER SD-200A AND AS DIRECTED BY CONTRACT ADMINISTRATOR.
  - CONTRACTORS TO TAKE PRECAUTIONARY STEPS TO PROTECT EXISTING TREES WITHIN THE LIMITS OF CONSTRUCTION FROM DAMAGE FROM CONSTRUCTION ACTIVITIES AS OUTLINED IN THE SPECIFICATIONS.
  - CONTRACTOR TO CONFIRM THE LOCATION OF ALL UTILITIES/SERVICES IN THE FIELD PRIOR TO CONSTRUCTION.
  - LAMP STANDARDS, HYDRO POLES, AND ANCHORS THAT REQUIRE TEMPORARY SUPPORT, REMOVAL OR REPLACEMENT, TO BE DONE SO AT THE EXPENSE OF THE CONTRACTOR AS NECESSARY.
  - ALL BOULEVARDS TO BE SODDED UNLESS OTHERWISE NOTED.
  - ADJUST ALL WATER VALVES, HYDRANTS, MANHOLES, AND CATCH BASINS IN WORK AREA TO GRADE.

EXISTING	LEGEND-PLAN	PROPOSED	EXISTING	LEGEND-PLAN	PROPOSED	EXISTING	LEGEND-PLAN	PROPOSED
---	WATER MAIN	---	---	VALVE	---	---	EDGE OF SIDEWALK	---
---	LAND DRAINAGE SEWER	---	---	CURB STOP	---	---	EDGE OF ASPHALT	---
---	WASTE WATER SEWER	---	---	HYDRO POLE & LIGHT STANDARD	---	---	EDGE OF CONCRETE	---
---	HYDRO	---	---	LIGHT STANDARD OR TRAFFIC SIGNAL	---	---	MODIFIED BARRIER CURB	---
---	GAS	---	---	HYDRO POLE / ANCHOR	---	---	BARRIER CURB	---
---	COMMUNICATIONS	---	---	FENCE	---	---	BARRIER CURB AND GUTTER	---
---	SIGNALS	---	---	PROPERTY LINE	---	---	PAVING STONE	---
○	MANHOLE	●	---	TEST HOLE / PAVEMENT CORE	---	---	CONCRETE SIDEWALK	---
△	CATCH BASIN/CATCH PIT	■	---	ELEVATIONS	(231.000)	---	CONCRETE SLAB	---
□	CURB INLET	▼	---	CURB RAMP	---	---	ASPHALT	---
◇	UTILITIES ADJUSTED	△ ○	---	DETECTABLE WARNING SURFACE TILE	---	---	MILLED SURFACE	---
◇	HYDRANT	◆	---			---	PAVEMENT REPAIR FABRIC	---

**LOCATIONS APPROVED UNDERGROUND STRUCTURES**

SIGNED BY: \_\_\_\_\_ DATE: \_\_\_\_\_

SUPV U/G STRUCTURES: \_\_\_\_\_ DATE: \_\_\_\_\_

LOCATION OF UNDERGROUND STRUCTURES AS SHOWN ARE BASED ON THE BEST INFORMATION AVAILABLE BUT NO GUARANTEE IS GIVEN THAT ALL EXISTING UTILITIES ARE SHOWN OR THAT THE GIVEN LOCATIONS ARE EXACT CONFIRMATION OF EXISTENCE AND EXACT LOCATION OF ALL SERVICES MUST BE OBTAINED FROM THE INDIVIDUAL UTILITIES BEFORE PROCEEDING

NO.	ISSUED FOR TENDER	DATE	BY
1	20200408		K.G.

G.S.M. TOH @ EAST OF AUSTIN ST ON HIGGINS AVE  
ELEV. 232.575

**wsp**

DESIGNED BY: K.G./E.M. CHECKED BY: S.M.  
DRAWN BY: W.DO. APPROVED BY: K.G.

HOR. SCALE: 1:250  
VERTICAL: 1:10

RELEASED FOR CONSTRUCTION

DATE: DECEMBER 2025

WSP Canada Inc.  
1600 Buffalo Place  
Winnipeg, MB R3T 6B8  
t. 204.477.6650  
f. 204.474.2864  
www.wsp.com

ENGINEERS SEAL  
PROVINCE OF MANITOBA  
K.L. GROFF  
REGISTERED PROFESSIONAL ENGINEER  
2026-04-07

CONSULTANT ACAD DWG. NO.  
CA0057242.0352-04

**FOR TENDER PURPOSES ONLY**  
**NOT FOR CONSTRUCTION**

**METRIC**  
WHOLE NUMBERS INDICATE MILLIMETRES  
DECIMALIZED NUMBERS INDICATE METRES

**ENGINEERS GEOSCIENTISTS MANITOBA**  
Certificate of Authorization  
WSP Canada Inc.  
No. 5750

**THE CITY OF WINNIPEG**  
PUBLIC WORKS DEPARTMENT  
ENGINEERING SERVICES DIVISION

2026 LOCAL INDUSTRIAL STREET RENEWALS

AUSTIN STREET  
HENRY AVE TO HIGGINS AVE  
ASPHALT RECONSTRUCTION  
STA. 1+55 TO STA. 2+33.89

CITY DRAWING NUMBER  
SHEET 04 OF 18

TENDER NO.  
48-2026

Apr 07, 2026 - 1:38pm L:\Projects\2025\02 - Transportation\CA0057242.0352 - 2026 Street Renewals\_26-R-06-02 Drawings\03\_Work\_Dwg\CA0057242.0352\_Austin St\_Plan\_Profile.dwg - tab:48-2026\_Drawing\_CAO057242.0352-04-RO