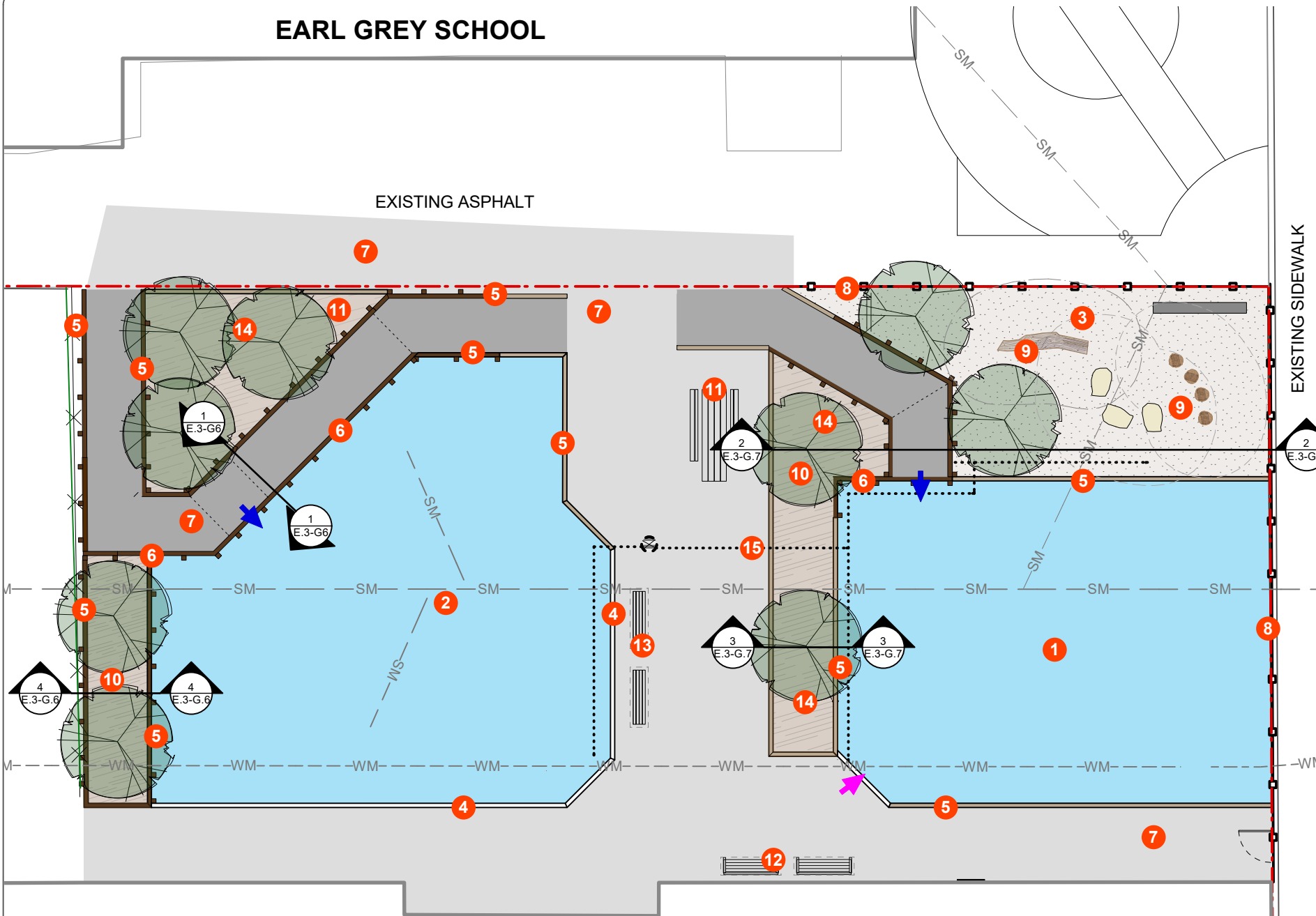


EARL GREY SCHOOL

EXISTING ASPHALT



MATERIAL NOTES

1. ALL WORK TO CONFORM TO CURRENT CITY OF WINNIPEG STANDARD CONSTRUCTION SPECIFICATIONS AND DETAILS UNLESS OTHERWISE NOTED.
2. DIMENSIONS ARE IN METERS UNLESS OTHERWISE NOTED.
3. DO NOT SCALE DRAWING.
4. PROTECT EXISTING TREES TO REMAIN, TYP.

EARL GREY COMMUNITY CENTRE

LEGEND

- EXISTING FENCE
- PROPOSED FENCE
- WATER MAIN

- SEWER MAIN
- PROPERTY LINE
- SUBSURFACE DRAINAGE
- CATCH BASIN

LEGEND

- 1 SUPPLY & INSTALL NEW AGES 2-5 PLAY EQUIPMENT ON STRINGER SYSTEM INCLUDING A PLATFORM STRUCTURE WITH RAMP ACCESS AND ACCESSIBLE SEESAW WITH POURED IN PLACE RUBBER SAFETY SURFACING TO COMPLY WITH CSA, CONSUMER PRODUCT SAFETY COMMISSION (CPSC) AND ASTM 1292-99 STANDARDS FOR PLAYGROUND SURFACING IMPACT ATTENUATION FOR PROPOSED PLAY EQUIPMENT FALL HEIGHTS. PREPARE AND INSTALL BASE AS PER CITY OF WINNIPEG STANDARDS AND MANUFACTURER'S SPECIFICATIONS (152 SM)
 - 2 SUPPLY & INSTALL NEW AGES 5-12 PLAY EQUIPMENT ON STRINGER SYSTEM INCLUDING A PLATFORM STRUCTURE WITH RAMP ACCESS AND POURED IN PLACE RUBBER SAFETY SURFACING TO COMPLY WITH CSA, CONSUMER PRODUCT SAFETY COMMISSION (CPSC) AND ASTM 1292-99 STANDARDS FOR PLAYGROUND SURFACING IMPACT ATTENUATION FOR PROPOSED PLAY EQUIPMENT FALL HEIGHTS. PREPARE AND INSTALL BASE AS PER CITY OF WINNIPEG STANDARDS AND MANUFACTURER'S SPECIFICATIONS (181 SM)
 - 3 SUPPLY & INSTALL 200 mm DEPTH ENGINEERED WOOD FIBRE SAFETY SURFACING AS PER MANUFACTURER'S SPECIFICATIONS AND SUBSURFACE DRAINAGE LAYER AS PER SCD-650 (72 SM)
 - 4 SUPPLY & INSTALL 1-TIER (25 LM) TIMBER EDGING, AS PER DETAIL 1/E.3-G7
 - 5 SUPPLY & INSTALL 2-TIER (73 LM) AND 3-TIER (35 LM) TIMBER EDGING AS PER SCD-651 AND DETAIL 4/E.3-G6
 - 6 SUPPLY & INSTALL 4-TIER (22 LM), 5-TIER (11 LM) AND 6-TIER (13 LM) TIMBER RETAINING WALL AS PER DETAIL 4/E.3-G6. EXTENTS AS PER LAYOUT PLAN
 - 7 SUPPLY & INSTALL ASPHALT PATHWAY C/W SEPARATION GEOTEXTILE FABRIC (LIGHT GREY 262 SM) OR COMBIGRID REINFORCING GEOTEXTILE (DARK GREY 46 SM) AS PER SCD-648 (GEOTEXTILE) OR DETAIL 1/E.3-G6 (COMBIGRID). ALL QUANTITIES ARE PROJECT TOTALS
 - 8 SUPPLY & INSTALL TIMBER AND CHAIN LINK FENCE (36 LM) WITH GATE AS PER E.3-G8
 - 9 SUPPLY & INSTALL FIELDSTONE BOULDERS (3) (APPROX 1M X 1M), LOG STEPPERS (4), AND PLAY LOG (1), AS PER DETAILS E.3-G9
 - 10 SUPPLY & INSTALL WOOD MULCH GROUNDCOVER (77 SM) AS PER DETAIL 2/E.3-G6
 - 11 SUPPLY & INSTALL ACCESSIBLE PICNIC TABLE AS PER SCD-122A (1)
 - 12 SUPPLY & INSTALL TACHE BENCHES AS PER SCD-121E (2)
 - 13 SUPPLY & INSTALL BACKLESS TACHE BENCHES AS PER SCD-121D (2)
 - 14 SUPPLY & INSTALL S/M SIZED 65mm CAL. TREES (9) AS PER DETAIL 3/E.3-G7. TREE SPECIES TO BE APPROVED BY CONTRACT ADMINISTRATOR
 - 15 SUPPLY & INSTALL SUBSURFACE DRAINAGE TIED INTO EXISTING CATCH BASIN AS PER SCD-661 AND CW-3120 (28 LM). DRAINAGE LINE SHOWN FOR REFERENCE, BIDDER TO DETERMINE ROUTE OF SUBSURFACE DRAINAGE
- ➡ APPROXIMATE LOCATION OF ACCESSIBLE ELEVATED PLATFORM ENTRY TO PLAY STRUCTURE (DETAIL 1/E.3-G6)
- ➡ ACCESSIBLE ENTRY (1) AS PER SCD-615C

CONTRACTOR TO CONFIRM ALL DIMENSIONS AND REPORT ANY DISCREPANCIES TO CONTRACT ADMINISTRATOR PRIOR TO CONSTRUCTION. LOCATION OF UNDERGROUND STRUCTURES AS SHOWN ARE BASED ON THE BEST INFORMATION AVAILABLE BUT NO GUARANTEE IS GIVEN THAT ALL EXISTING UTILITIES ARE SHOWN OR THAT THE GIVEN LOCATIONS ARE EXACT. CONFIRMATION OF EXISTENCE AND EXACT LOCATION OF ALL SERVICES MUST BE OBTAINED FROM THE INDIVIDUAL UTILITIES BEFORE PROCEEDING WITH CONSTRUCTION.



THE CITY OF WINNIPEG
Planning, Property and Development Department
Planning and Land Use Division
Unit 15 - 30 Fort Street, Winnipeg, MB, (R3C 4X5)

DESIGNED BY

MA

CHECKED BY

DRAWN BY

MA

APPROVED BY

HORIZ. SCALE

1:175

VERT. SCALE

DATE

January 2026

MANAGER,
PARK AND OPEN SPACES

DATE

MANAGER,
PLANNING AND LAND USE DIVISION

DATE

DRAWING TITLE

Earl Grey CC
Playground Redevelopment
Materials Plan

SITE ADDRESS 360 Cockburn St. N.

DRAWING NO.

E.3-G2

BID OPPORTUNITY NO.
55-2026