

EARL GREY
SCHOOL

LAYOUT NOTES

1. ALL WORK TO CONFORM TO CURRENT CITY OF WINNIPEG STANDARD CONSTRUCTION SPECIFICATIONS AND DETAILS UNLESS OTHERWISE NOTED.
2. DIMENSIONS ARE IN METERS UNLESS OTHERWISE NOTED.
3. DO NOT SCALE DRAWING.
4. DIMENSIONS OF TIMBER EDGING AND WALL ARE TO OUTSIDE OF EDGING, UNLESS OTHERWISE NOTED.
5. LAYOUT TO BE APPROVED BY CONTRACT ADMINISTRATOR
6. CONTRACTOR TO VERIFY DIMENSIONS AND CONFORMANCE OF PLAY EQUIPMENT SAFETY ZONES AND REPORT ANY DISCREPANCIES TO CONTRACT ADMINISTRATOR.

POINT OF ORIGIN:
NORTH-EAST
CORNER OF
EXISTING FENCE
POST

COCKBURN ST.

EARL GREY
COMMUNITY
CENTRE

LEGEND

- SM — SEWER MAIN
— WM — WATER MAIN
— SM — PROPERTY LINE
— WM — SUBSURFACE DRAINAGE
— WM — CATCH BASIN

CONTRACTOR TO CONFIRM ALL DIMENSIONS AND REPORT ANY DISCREPANCIES TO CONTRACT ADMINISTRATOR PRIOR TO CONSTRUCTION. LOCATION OF UNDERGROUND STRUCTURES AS SHOWN ARE BASED ON THE BEST INFORMATION AVAILABLE BUT NO GUARANTEE IS GIVEN THAT ALL EXISTING UTILITIES ARE SHOWN OR THAT THE GIVEN LOCATIONS ARE EXACT. CONFIRMATION OF EXISTENCE AND EXACT LOCATION OF ALL SERVICES MUST BE OBTAINED FROM THE INDIVIDUAL UTILITIES BEFORE PROCEEDING WITH CONSTRUCTION.

DRAWING TITLE
**Earl Grey CC
Playground Redevelopment
Layout Plan**

SITE ADDRESS 360 Cockburn St. N.

DRAWING NO.

E.3-G4

BID OPPORTUNITY NO.
55-2026



THE CITY OF WINNIPEG
Planning, Property and Development Department
Planning and Land Use Division
Unit 15 - 30 Fort Street, Winnipeg, MB, (R3C 4X5)

DESIGNED BY MA

CHECKED BY

DRAWN BY MA

APPROVED BY

HORIZ. SCALE 1:175
VERT. SCALE

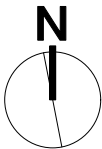
DATE January 2026

MANAGER,
PARK AND OPEN SPACES

DATE

MANAGER,
PLANNING AND LAND USE DIVISION

DATE



0 2 6 10 m