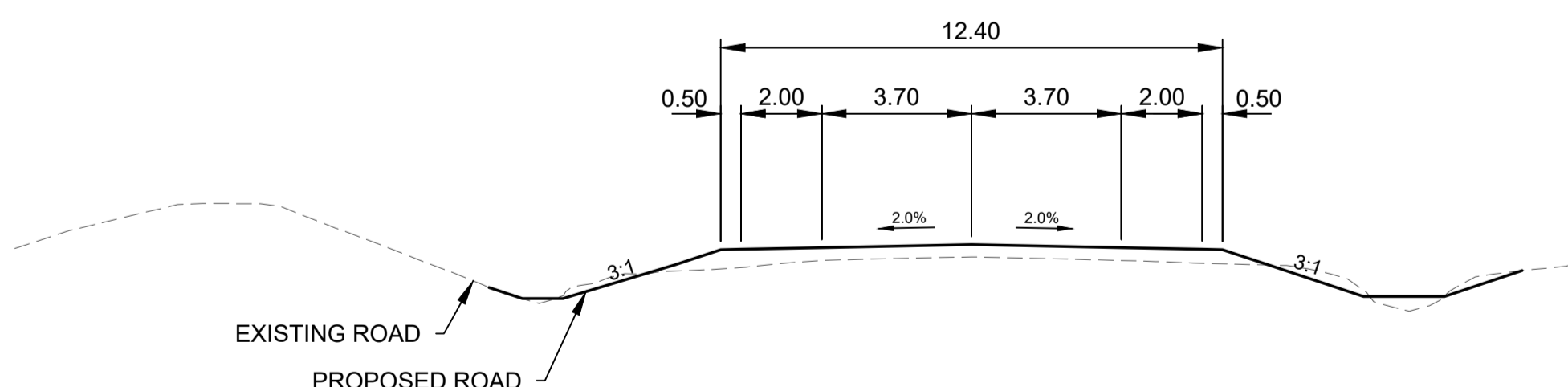
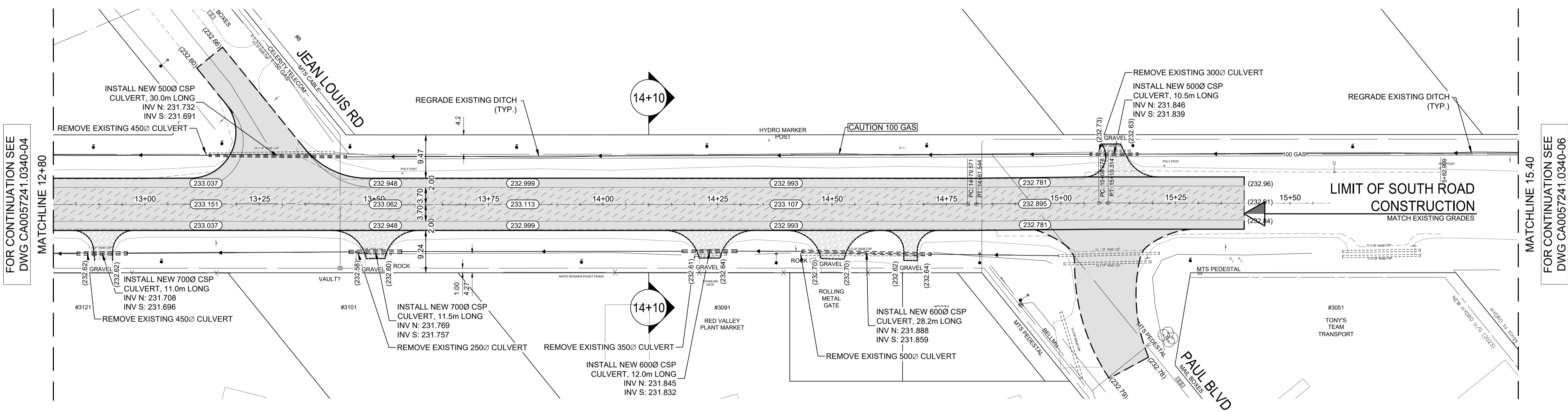
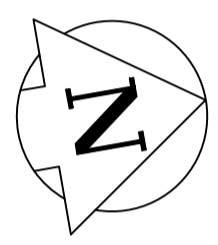


ST. MARY'S ROAD



CROSS-SECTION - STATION 14+10
SCALE 1:150

- NOTES:
1. ALL WORK AND MATERIALS ARE IN ACCORDANCE WITH THE LATEST REVISION OF THE CITY OF WINNIPEG STANDARD CONSTRUCTION SPECIFICATIONS.
 2. CONTRACTOR CONFIRMED THE LOCATION OF ALL UTILITIES/SERVICES IN THE FIELD PRIOR TO CONSTRUCTION.
 3. ALL ROADWAY DIMENSIONS SHOWN ARE TO EDGE OF PAVEMENT.
 4. CONTRACTORS TOOK PRECAUTIONARY STEPS TO PROTECT EXISTING TREES WITHIN THE LIMITS OF CONSTRUCTION FROM DAMAGE FROM CONSTRUCTION ACTIVITIES AS OUTLINED IN THE SPECIFICATIONS.
 5. LAMP STANDARDS, HYDRO POLES, AND ANCHORS THAT REQUIRED TEMPORARY SUPPORT, REMOVAL OR REPLACEMENT, WERE DONE SO AT THE EXPENSE OF THE CONTRACTOR AS NECESSARY.
 6. ADJUSTED ALL WATER VALVES, HYDRANTS, MANHOLES, AND CATCH BASINS IN WORK AREA TO GRADE.
 7. ALL ROADS TO MATCH EXISTING.
 8. PRIVATE APPROACHES TO BE REINSTATE WITH SAME MATERIAL AS EXISTING.

EXISTING	LEGEND-PLAN	PROPOSED	EXISTING	LEGEND-PLAN	PROPOSED	EXISTING	LEGEND-PLAN	PROPOSED
---	WATER MAIN	---	---	VALVE	---	---	EDGE OF SIDEWALK	---
---	LAND DRAINAGE SEWER	---	---	CURB STOP	---	---	EDGE OF ASPHALT	---
---	WASTE WATER SEWER	---	---	HYDRO POLE & LIGHT STANDARD	---	---	EDGE OF CONCRETE	---
---	HYDRO	---	---	LIGHT STANDARD OR TRAFFIC SIGNAL	---	---	MODIFIED BARRIER CURB	---
---	GAS	---	---	HYDRO POLE / ANCHOR	---	---	BARRIER CURB	---
---	COMMUNICATIONS	---	---	FENCE	---	---	BARRIER CURB AND GUTTER	---
---	SIGNALS	---	---	PROPERTY LINE	---	---	PAVING STONE	---
○	MANHOLE	●	---	TEST HOLE / PAVEMENT CORE	---	---	CONCRETE SLAB	---
□	CATCH BASIN/CATCH PIT	■	---	ELEVATIONS	(231.000)	---	RUBBLIZATION	---
△	CURB INLET	▼	---	CURB RAMP	---	---	ASPHALT	---
◇	UTILITIES ADJUSTED	△ ○	---	DETECTABLE WARNING SURFACE TILE	---	---	MILLED SURFACE	---
◇	HYDRANT	◆	---			---	PAVEMENT REPAIR FABRIC	---

LOCATIONS APPROVED UNDERGROUND STRUCTURES	
SIGNED BY:	DATE
SUPV U/G STRUCTURES	DATE
LOCATION OF UNDERGROUND STRUCTURES AS SHOWN ARE BASED ON THE BEST INFORMATION AVAILABLE BUT NO GUARANTEE IS GIVEN THAT ALL EXISTING UTILITIES ARE SHOWN OR THAT THE GIVEN LOCATIONS ARE EXACT CONFIRMATION OF EXISTENCE AND EXACT LOCATION OF ALL SERVICES. MUST BE OBTAINED FROM THE INDIVIDUAL UTILITIES BEFORE PROCEEDING.	
G.S.M. ELEV.	IRON BAR @ 225M NORTH OF LIMIT OF NORTH ROAD CONSTRUCTION
232.205	
7	
6	
5	
4	
3	
2	
1	
0	
NO.	ISSUED FOR TENDER
	03/05/2026
	S.S.
	DATE
	BY
	DATE
	DECEMBER 2025

		WSP Canada Inc. 1600 Buffalo Place Winnipeg, MB R3T 6B8 t. 204.477.6650 f. 204.474.2864 www.wsp.com	
DESIGNED BY	E.L.	CHECKED BY	S.S.
DRAWN BY	G.Z.	APPROVED BY	S.S.
HOR. SCALE	1:500	RELEASED FOR CONSTRUCTION	
VERTICAL	1:20		
NO.	REVISIONS	DATE	BY

ENGINEERS SEAL	
CONSULTANT ACAD DWG. NO.	CA0057241.0340-05

FOR TENDER PURPOSES ONLY
NOT FOR CONSTRUCTION

METRIC
WHOLE NUMBERS INDICATE MILLIMETRES
DECIMALIZED NUMBERS INDICATE METRES

ENGINEERS GEOSCIENTISTS MANITOBA
Certificate of Authorization
WSP Canada Inc.
No. 5750

THE CITY OF WINNIPEG
PUBLIC WORKS DEPARTMENT
ENGINEERING SERVICES DIVISION

ST. MARY'S ROAD (SOUTH)
PLAN AND PROFILE
CONCRETE RUBBLIZATION
STA. 12+80 TO STA. 15.40

CITY DRAWING NUMBER: P-3600-05
SHEET 05 OF 17
TENDER NO. 69-2026