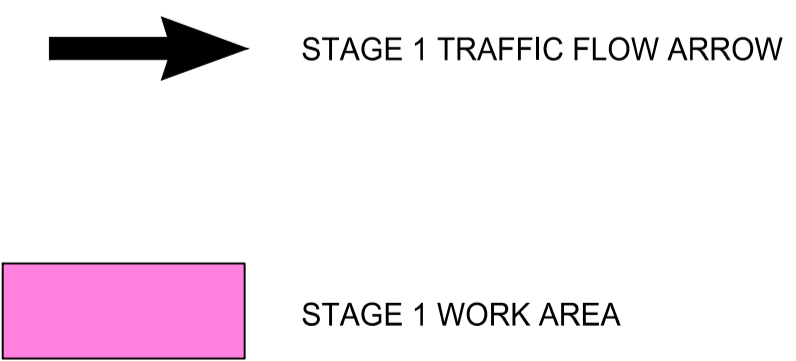
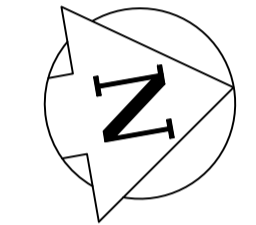
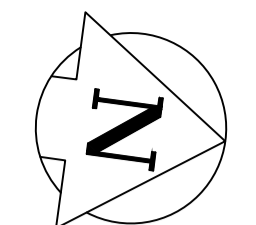
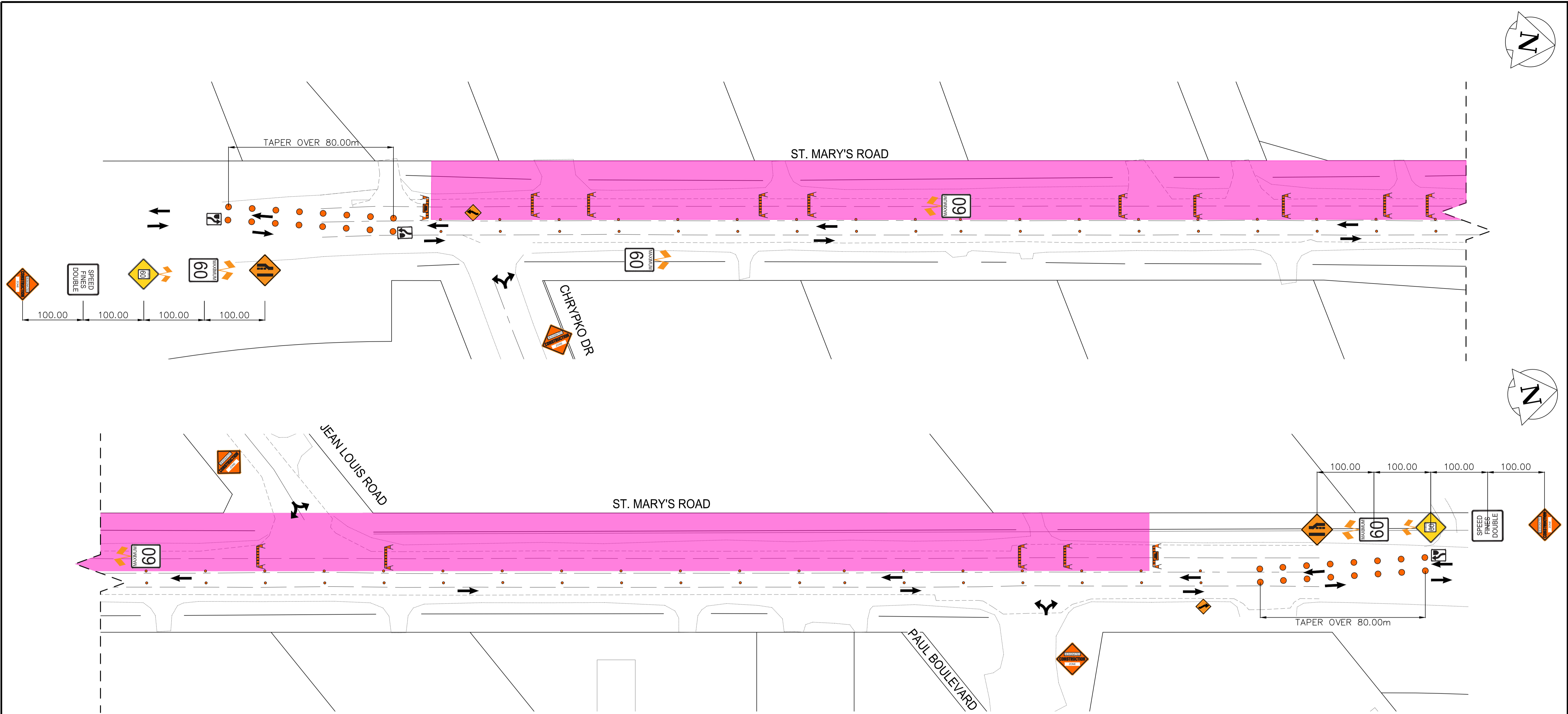


Mar 05, 2026 - 1:37pm  
 L:\Projects\2025\02 - Transportation\CA0057241\_0340 - 2026 Street Renewals-St. Mary's Road\02 Drawings\03\_Work\_Dwg\CA0057241\_0340\_St. Mary's Rd\_Staging&Signage\_recover.dwg -tab:69-2026\_Drawing\_P-3600-16-R0



- NOTES:**
1. ALL TRAFFIC SIGNAGE AND TEMPORARY TRAFFIC CONTROL TO CONFORM WITH THE LATEST REVISION OF THE CITY OF WINNIPEG MANUAL OF TEMPORARY TRAFFIC CONTROL ON REGIONAL STREETS
  2. TRAFFIC TO BE MAINTAINED IN THE NORTHBOUND AND SOUTHBOUND DIRECTION FOR STAGES 1 & 2.
  3. TRAFFIC CONTROL TO BE MIRRORED AFTER COMPLETION OF STAGE 1 WORK TO COMMENCE STAGE 2 WORK.

**FOR INFORMATION ONLY**

**METRIC**  
 WHOLE NUMBERS INDICATE MILLIMETRES  
 DECIMALIZED NUMBERS INDICATE METRES

**ENGINEERS  
 GEOSCIENTISTS  
 MANITOBA**  
 Certificate of Authorization  
 WSP Canada Inc.  
 No. 5750

**THE CITY OF WINNIPEG**  
 PUBLIC WORKS DEPARTMENT  
 ENGINEERING SERVICES DIVISION

**ST. MARY'S ROAD PAVEMENT RENEWAL**  
 ST. MARY'S ROAD - STAGE 1 & 2  
 STAGING & TEMPORARY TRAFFIC SIGNAGE

WSP Canada Inc.  
 1600 Buffalo Place  
 Winnipeg, MB R3T 6B8  
 t. 204.477.6650  
 f. 204.474.2864  
 www.wsp.com