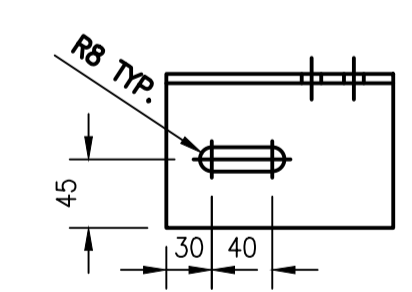
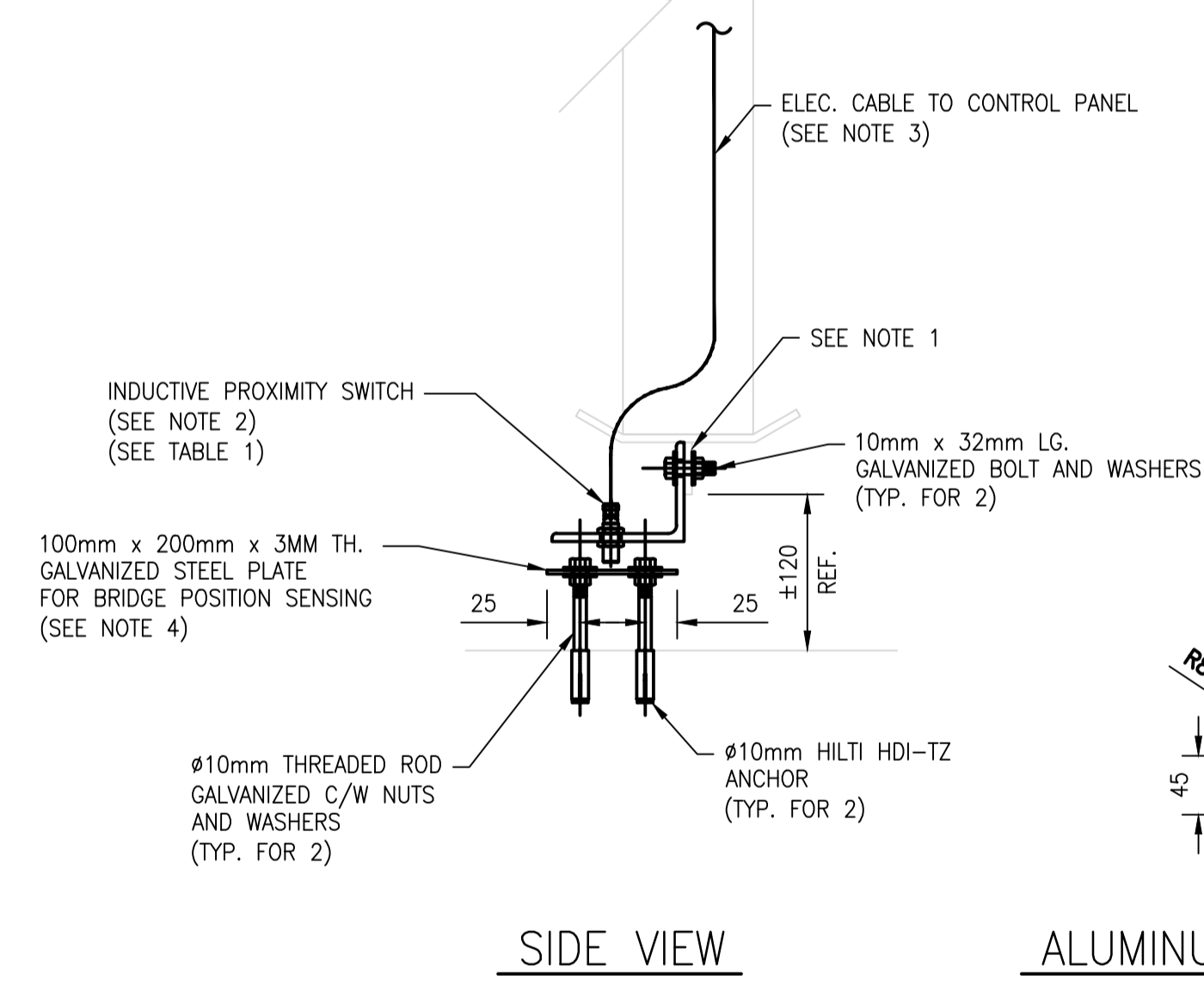
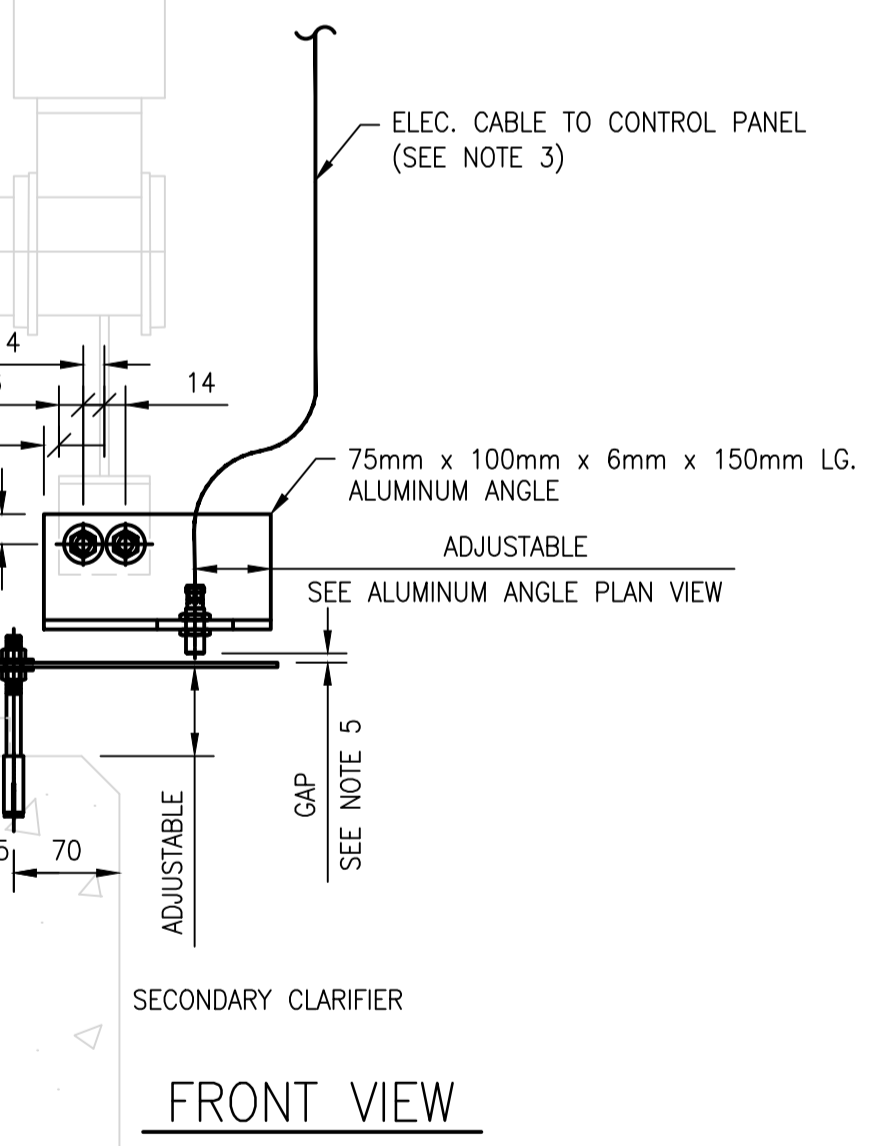


CONSTRUCTION NOTES:

1. DRILL NEW 13mm HOLES IN EXISTING ALUMINIUM PLATE AND NEW ALUMINIUM ANGLE TO ACCOMMODATE NEW #10mm BOLTS.
2. PROVIDE AND INSTALL NEW INDUCTIVE PROXIMITY SWITCH AND MOUNT ONTO ALUMINIUM ANGLE. REFER TO SPECIFICATION 409100 FOR PROXIMITY SWITCH REQUIREMENTS.
3. ROUTE PROXIMITY SWITCH CABLE INSIDE FLEXIBLE OR ALUMINIUM RIGID CONDUIT TO CONTROL PANEL, AVOIDING MOVING COMPONENTS, AND IN A MANNER SUCH THAT THE CONDUIT WILL NOT BE SUBJECT TO DAMAGE. DO NOT MAKE INTERMEDIATE FIELD CONNECTIONS. COIL EXCESS CABLING INSIDE CONTROL PANEL. PROVIDE VAPOUR-TIGHT CABLE GLAND ON END OF CONDUIT AT PROXIMITY SWITCH. SEAL CONDUIT AT ENTRY TO CONTROL PANEL.
4. PROVIDE AND INSTALL NEW GALVANIZED STEEL PLATE FOR BRIDGE POSITION SENSING. PLATE TO BE MOUNTED AT MIDDLE ALONG THE LENGTH OF THE CLARIFIER TO ALLOW FOR THE CONTROL SYSTEM TO SAMPLE THE SLUDGE DEPTH WHEN THE BRIDGE IS IN THE MID-TRAVEL POSITION. COORDINATE WITH THE CONTRACT ADMINISTRATOR FOR EXACT POSITION.
5. ADJUST THE GAP BETWEEN THE PROXIMITY SWITCH AND GALVANIZED STEEL PLATE TO ENSURE RELIABLE SENSING OF BRIDGE POSITION. GAP TO BE IN ACCORDANCE WITH PROXIMITY SWITCH MANUFACTURER RECOMMENDATIONS.

TABLE 1 - PROXIMITY SWITCHES

BRIDGE NO.	CLARIFIER NO.	PROXIMITY SWITCH TAG	LOOP DRAWING
1	12	ZS-S712	1-0101-AILD-S017
2	13	ZS-S713	1-0101-AILD-S018
3	16	ZS-S716	1-0101-AILD-S019
4	17	ZS-S717	1-0101-AILD-S020
5	20	ZS-S720	1-0101-AILD-S021
6	21	ZS-S721	1-0101-AILD-S022
7	24	ZS-S724	1-0101-AILD-S023
8	25	ZS-S725	1-0101-AILD-S024

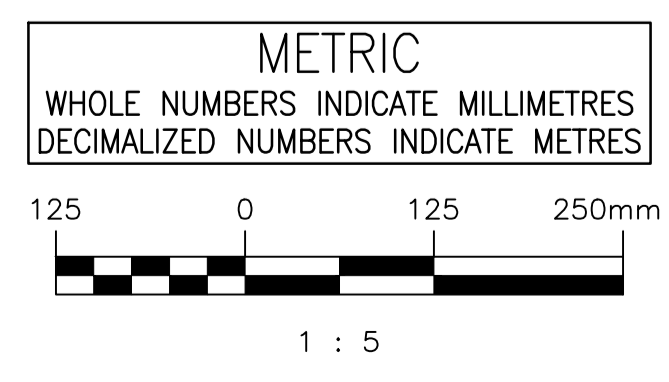


FRONT VIEW

SIDE VIEW

ALUMINIUM ANGLE PLAN VIEW

INDUCTIVE PROXIMITY SWITCH MOUNTING DETAIL
SCALE: 1:5



ES ENGINEERS GEOSCIENTISTS MANITOBA
Certificate of Authorization
AtkinsRéalis Canada Inc.
No. 4489

THE CITY OF WINNIPEG
Winnipeg WATER AND WASTE DEPARTMENT

NORTH END SEWAGE TREATMENT PLANT
SECONDARY CLARIFIERS SLUDGE BLANKET LEVEL DETECTION
INSTALLATION DETAILS
INDUCTIVE PROXIMITY SWITCH
ZS-S712 TO ZS-S725

CITY DRAWING NUMBER	SHEET	REV.	SIZE
1-0101-ADTL-S002	00	00	A1

NO.	REVISIONS	DATE	DESIGN	CHECK
00	ISSUED FOR CONSTRUCTION	2026/01/30	CAF	BC

AtkinsRéalis
148 Nature Park Way, Winnipeg, Manitoba
Canada R3P 0X7 204-786-8080

DESIGNED BY: C. FETTERLY
CHECKED BY: B. CLEVEN
DRAWN BY: C. FETTERLY
APPROVED BY: B. CLEVEN
SCALE: 1:5
ISSUED FOR CONSTRUCTION
BY: A. KIAYEE
DATE: 2025/05/14
DATE: 2026/01/30

CONSULTANT NO.:

ENGINEER'S SEAL

1-0101-AGAD-S001	INSTRUMENT LOCATION PLAN
DRAWING NUMBER	REFERENCE DRAWINGS