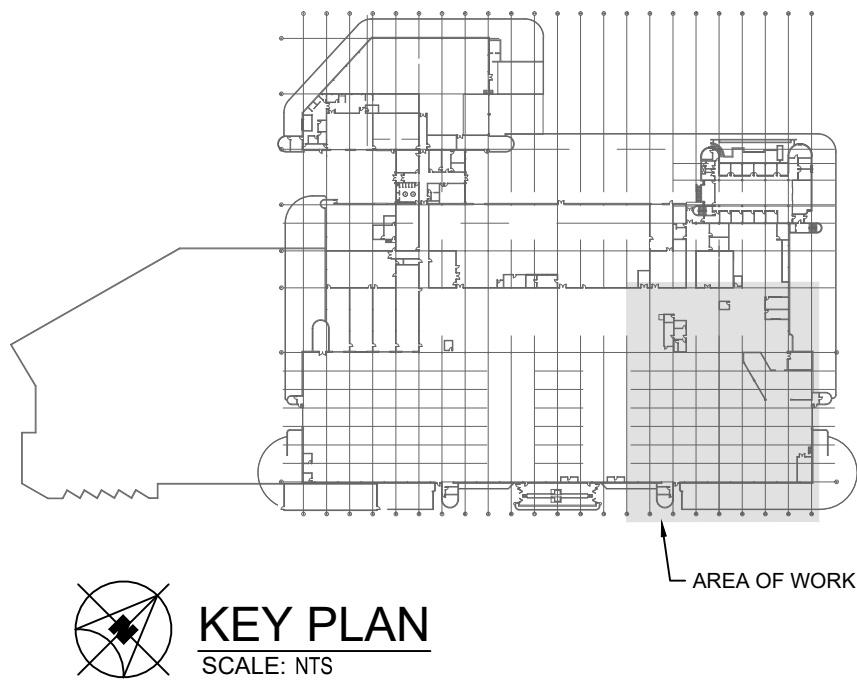


1 PARTIAL ROOF PLAN - PLUMBING - NEW CONSTRUCTION
SCALE: 1/16"=1'-0"
M2.2

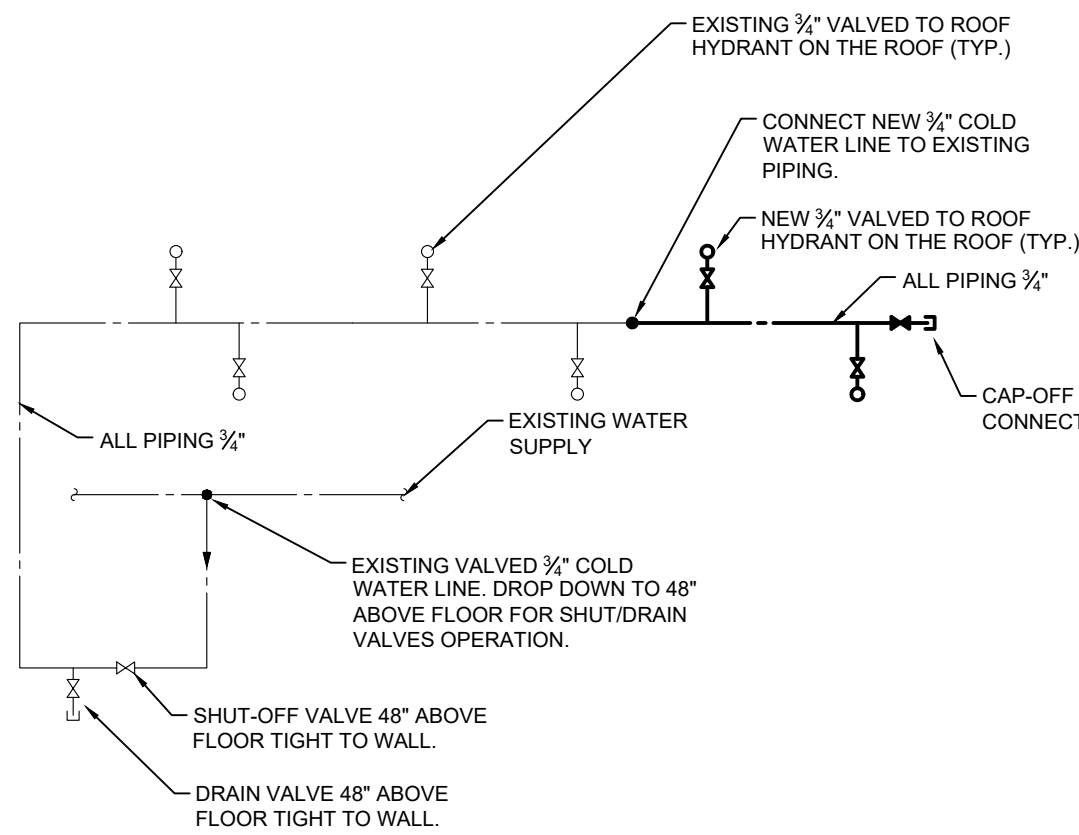


GENERAL NOTES

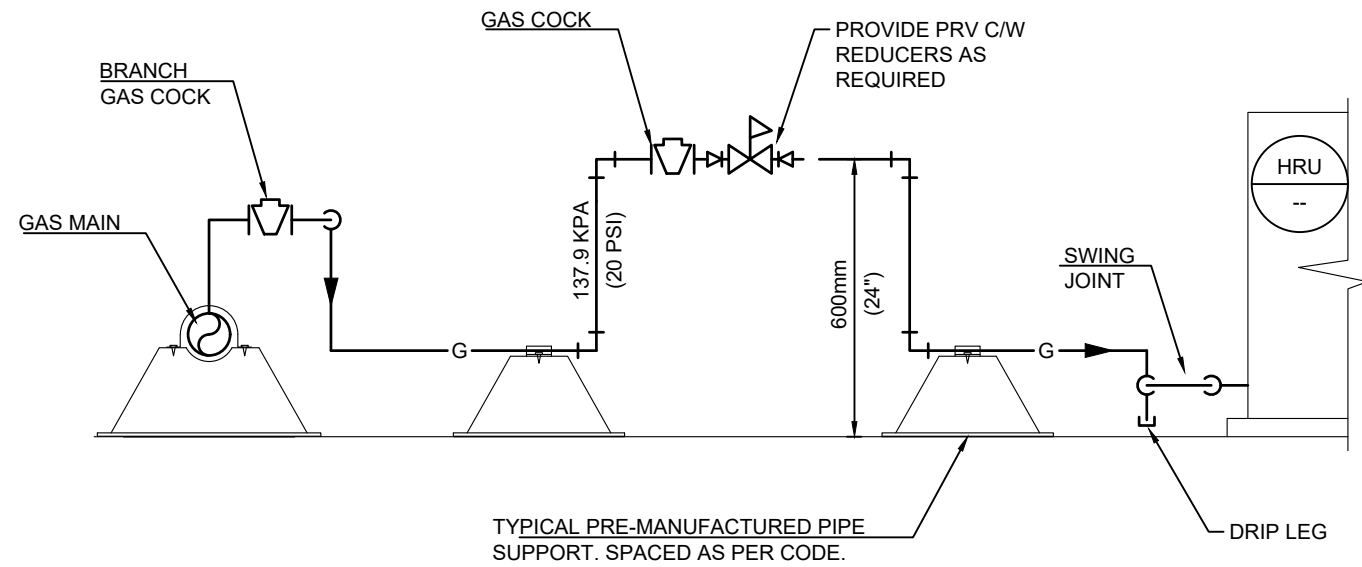
- ALL ABANDONED EQUIPMENT AND SERVICES WITHIN AREA OF WORK SHALL BE REMOVED.
- THIS BUILDING MAY CONTAIN ASBESTOS. REFER TO FRONT END SPECIFICATIONS FOR FURTHER INFORMATION.
- PRIOR TO DEMOLISHING AND REMOVAL OF THE EXISTING EQUIPMENT, COORDINATE WITH THE CITY. RETURN EQUIPMENT TO THE CITY AS REQUIRED.
- REFER TO ROOF DETAILS AND SPECIFICATIONS FOR ALL NEW AND CAPPED OPENINGS.
- FOR DRAWING CLARITY, NOT ALL MECHANICAL EQUIPMENT, PIPING AND DUCTWORK HAS BEEN SHOWN.

KEY NOTES

- INSTALL NEW FLUE VENT IN ACCORDANCE WITH MANUFACTURER REQUIREMENTS. PROVIDE WEATHER TIGHT SEAL IN ACCORDANCE WITH ROOF DETAIL AND MATCH THE CONSTRUCTION AND FINISH FROM ADJACENT CONDITION. CONTRACTOR TO CONFIRM EXACT LOCATION ON SITE. MAINTAIN REQUIRED SEPARATION DISTANCE FROM COMBUSTION AIR INTAKE AS PER GAS CODE.
- NEW COMBUSTION INTAKE THROUGH ROOF. PROVIDE WEATHER TIGHT SEAL IN ACCORDANCE WITH ROOF DETAIL AND MATCH THE CONSTRUCTION AND FINISH FROM ADJACENT CONDITION. CONTRACTOR TO CONFIRM EXACT LOCATION ON SITE.
- NEW 20PSI NATURAL GAS PIPE FROM BELOW SERVING NEW HRU.
- NEW NON FREEZE ROOF HYDRANT LOCATED BESIDE HRU. COORDINATE FINAL LOCATION ON SITE. REFER TO ROOF HYDRANT SCHEMATIC DETAIL ON THIS DRAWING.
- PROVIDE CONDENSATE DRAIN TO DISCHARGE ONTO ROOF C/W HEAT TRACE (BY ELECTRICAL DIVISION) AND INSULATION.
- NEW HRU. REFER TO DRAWING M4.2 FOR FURTHER INFORMATION.
- NEW NATURAL GAS REGULATOR VENT THROUGH ROOF. PROVIDE WEATHER TIGHT SEAL. CONTRACTOR TO CONFIRM EXACT LOCATION ON SITE.



2 ROOF HYDRANT SCHEMATIC DETAIL
SCALE: NTS
M2.2



3 TYPICAL PRESSURE REDUCING VALVE DETAIL
SCALE: NTS
M2.2

FILE NAME AND PATH: G:\Projects\2025\25-330 Transit East High Bay Ventilation Upgrade\03 CAD\3 Misc\PHASE 0323330_M2.2_P1.dwg
LAYOUT: M2.2
LAST SAVED BY: jh
DATE PLOTTED: January 9, 2026 8:15:28 AM

0	ISSUED FOR CONSTRUCTION	JH	27/03/2026
LETTER OR NUMBER	DESCRIPTION	BY	DDMMYY

ENGINEERS
GEOSCIENTISTS
MANITOBA
Certificate of Authorization
SMS Engineering Ltd.
No. 166



SMS Engineering
770 Bradford Street Winnipeg, Canada (204) 775-0291
smseng.com

Project Title
**TRANSIT MAINTENANCE
AND REPAIR BUILDING
MECHANICAL UPGRADE -
EAST HIGH BAY**

WINNIPEG

Drawing Title
**PARTIAL ROOF PLAN -
PLUMBING -
NEW CONSTRUCTION**

MAINTOBA

Drawn By
AP
Checked By
AJ
Approved By
JH
Scale
AS NOTED
Date
MARCH 2026
Project No.
25-330-01
Revision Number
0
Drawing Number
M2.2
Sheet Order
07 OF 10

