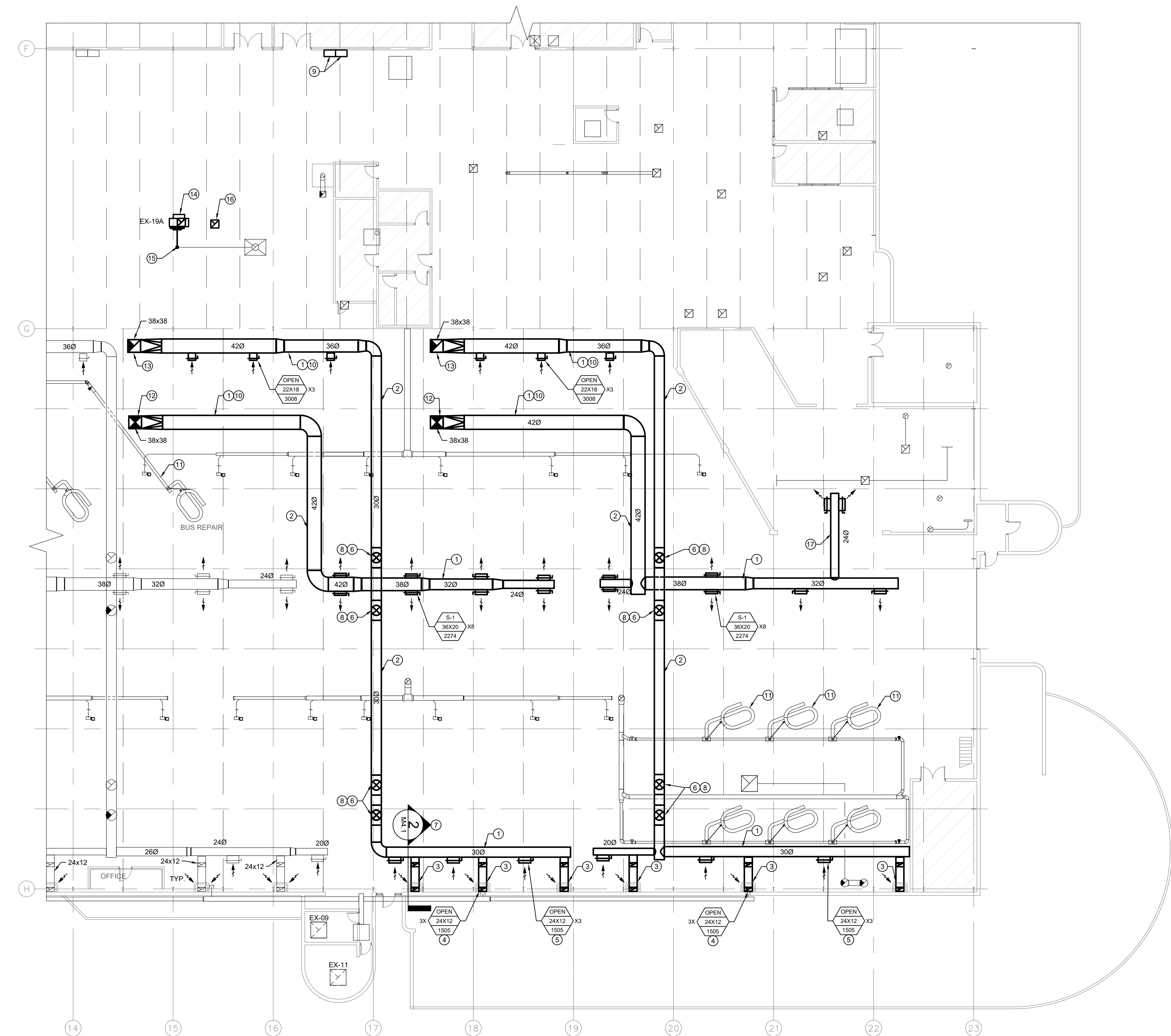
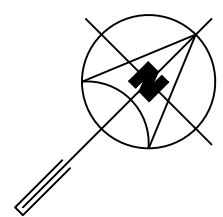
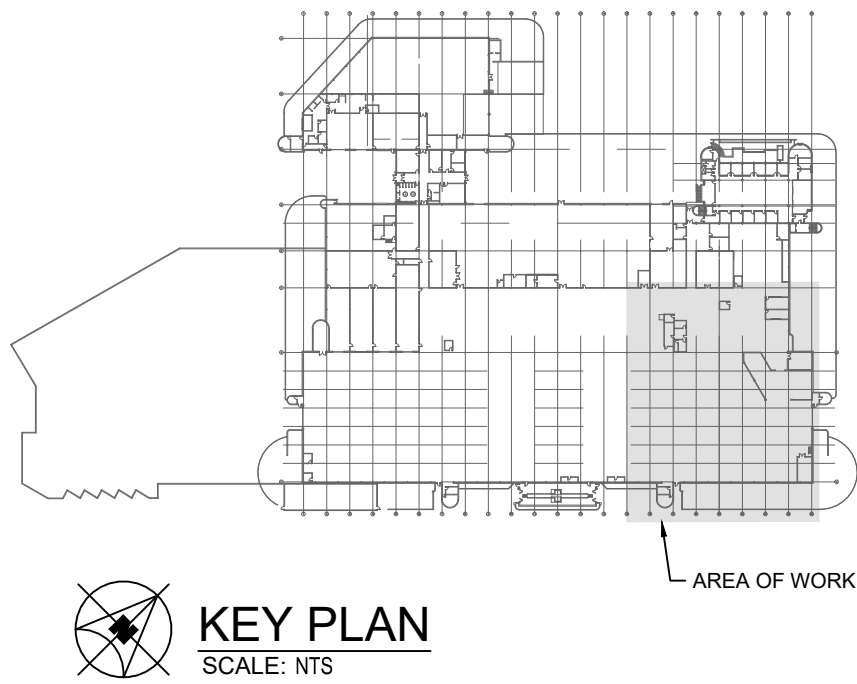


FILE NAME AND PATH: G:\Projects\2025\25-330 Transit East High Bay Ventilation Upgrade\03 CAD\3 Main\FloorPlan\0323330\_M4.1\_PV\_1.dwg  
LAYOUT: M4.1 LAST SAVED BY: jh DATE PLOTTED: January 9, 2026 8:12:28 AM



 **1 PARTIAL MAIN FLOOR PLAN - VENTILATION - NEW CONSTRUCTION**  
M4.1 SCALE: 1/16"=1'-0"

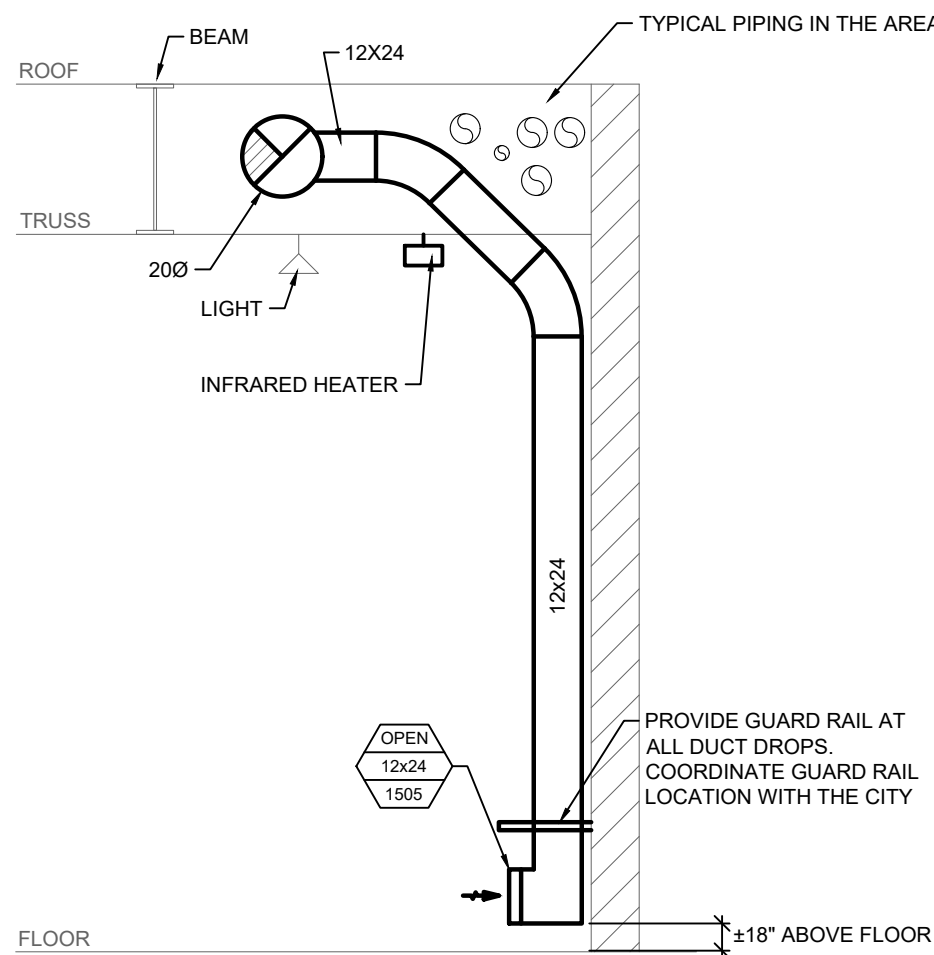


## GENERAL NOTES

- ALL ABANDONED EQUIPMENT AND SERVICES WITHIN AREA OF WORK SHALL BE REMOVED.
- THIS BUILDING MAY CONTAIN ASBESTOS. REFER TO FRONT END SPECIFICATIONS FOR FURTHER INFORMATION.
- PRIOR TO DEMOLISHING AND REMOVAL OF THE EXISTING EQUIPMENT, COORDINATE WITH THE CITY. RETURN EQUIPMENT TO THE CITY AS REQUIRED.
- THE WORK AREA IS OCCUPIED 24/7. DURING THE HOURS OF 7:00 AM TO 2:30 PM, IT IS THE BUSIEST TIME FOR THE AREA AND IT IS PREFERRED THAT NO MORE THAN TWO HOIST SPACES ARE IMPACTED BY THE SCOPE OF WORK BUT ADDITIONAL HOISTS MAY BE IMPACTED WITH SUFFICIENT NOTICE AND APPROVAL. DURING THE HOURS OF 2:30 PM TO 7:00 AM, THE AREA IS LESS BUSY AND APPROVAL FOR ADDITIONAL HOISTS TO BE IMPACTED WILL BE MORE EASILY OBTAINED. COORDINATE WITH THE CITY PRIOR TO COMMENCEMENT OF WORK. UPON COMPLETION OF WORK AT THE END OF EACH SHIFT, CLEAN UP THE AREA OF WORK TO ENSURE THE HOISTS ARE NOT IMPACTED.
- FOR DRAWING CLARITY, NOT ALL MECHANICAL EQUIPMENT, PIPING AND DUCTWORK HAS BEEN SHOWN.
- CAUTION SHOULD BE TAKEN TO PREVENT SILICA RELEASE AND FUMES INSIDE THE GARAGE.

## KEY NOTES @

- DUCT RUNNING EAST/WEST TO BE RUN THROUGH JOIST WEBS.
- DUCT RUNNING NORTH/SOUTH TO BE RECESSED UP BETWEEN JOISTS.
- RUN DUCTWORK DOWN THE WALL. SUPPORT DUCT FROM WALL. COORDINATE FINAL DROP DOWN LOCATION WITH THE CITY PRIOR TO INSTALLATION.
- EXHAUST DUCT OPENING C/W WIRE MESH AT LOW LEVEL  $\pm 18"$  ABOVE FLOOR. PROVIDE GUARD RAIL AROUND DUCT.
- EXHAUST DUCT OPENING C/W WIRE MESH AT HIGH LEVEL.
- OFFSET EXHAUST DUCT TO AVOID SUPPLY DUCT/EXISTING SERVICE PIPES.
- REFER TO 2/M4.1 FOR DETAIL.
- ENSURE DUCT DROP HEIGHT DOES NOT IMPACT THE FULL LIFT OF BUS.
- PROVIDE NEW CONTROLLER FOR HRU-5 & 6 AT APPROXIMATELY THIS LOCATION AND TIE INTO EXISTING JOHNSON CONTROL METASYS SYSTEM. REFER TO ELECTRICAL FOR POWER SUPPLY REQUIREMENTS.
- REFER TO SPECIFICATION SECTION 238010 CLAUSE 2.3.2 FOR DUCT PRESSURE CLASS CONSTRUCTION REQUIREMENTS.
- ENSURE THAT NO FUMES FROM GAS FIRED CONSTRUCTION EQUIPMENT ARE RELEASED INTO THE AREA OF WORK. CONTRACTOR MAY UTILIZE EXISTING TAIL PIPE EXHAUST FOR SOURCE CAPTURE OF FUME EXHAUST WITH THE APPROVAL FROM THE CITY. CONTRACTOR SHALL ASSUME ALL COSTS TO TEMPORARILY MODIFY SYSTEM TO EXTEND EXHAUST INLET TO GAS FIRED CONSTRUCTION EQUIPMENT AND TO RESTORE BACK TO ORIGINAL ARRANGEMENT. COORDINATE WITH THE CITY PRIOR TO PROCEEDING.
- SUPPLY AIR DUCT DOWN FROM HIGH ROOF. REFER TO DRAWING M4.2 FOR CONTINUATION.
- EXHAUST AIR DUCT UP TO HIGH ROOF. REFER TO DRAWING M4.2 FOR CONTINUATION.
- RELOCATE EXISTING EXHAUST FAN AND ASSOCIATED DUCT FROM ROOF TO APPROXIMATELY THIS LOCATION. EXACT LOCATION TO BE DETERMINED ON SITE.
- CONNECT NEW 120 EXHAUST DUCT TO EXISTING DUCT APPROXIMATELY IN THIS LOCATION. EXACT LOCATION TO BE DETERMINED ON SITE.
- RELOCATE EXISTING INTAKE DUCT C/W FAN LOCATED ON ROOF TO APPROXIMATELY THIS LOCATION. EXACT LOCATION TO BE DETERMINED ON SITE.
- DUCT PENETRATION THROUGH BLOCK WALL. COORDINATE WALL OPENING WITH STRUCTURAL DIVISION.



**2 EXHAUST DUCT SECTION VIEW**  
M4.1 SCALE: NTS



**Winnipeg Transit**

 <b>ENGINEERS GEOSCIENTISTS MANITOBA</b> Certificate of Authorization <b>SMS Engineering Ltd.</b> No. 166						 770 Bradford Street Winnipeg, Canada (204) 775-0291 smseng.com		Project Title <b>TRANSIT MAINTENANCE AND REPAIR BUILDING MECHANICAL UPGRADE - EAST HIGH BAY</b>	Drawing Title <b>PARTIAL MAIN FLOOR PLAN - VENTILATION - NEW CONSTRUCTION</b>	Drawn By AP Checked By AJ Approved By JH Scale AS NOTED Date MARCH 2026 Project No. 25-330-01	Revision Number <b>0</b> Drawing Number <b>M4.1</b> Sheet Order <b>09 OF 10</b>
0	ISSUED FOR CONSTRUCTION	JH	27/03/2026					WINNIPEG	MANITOBA		
LETTER OR NUMBER	DESCRIPTION	BY	DDMMYY								