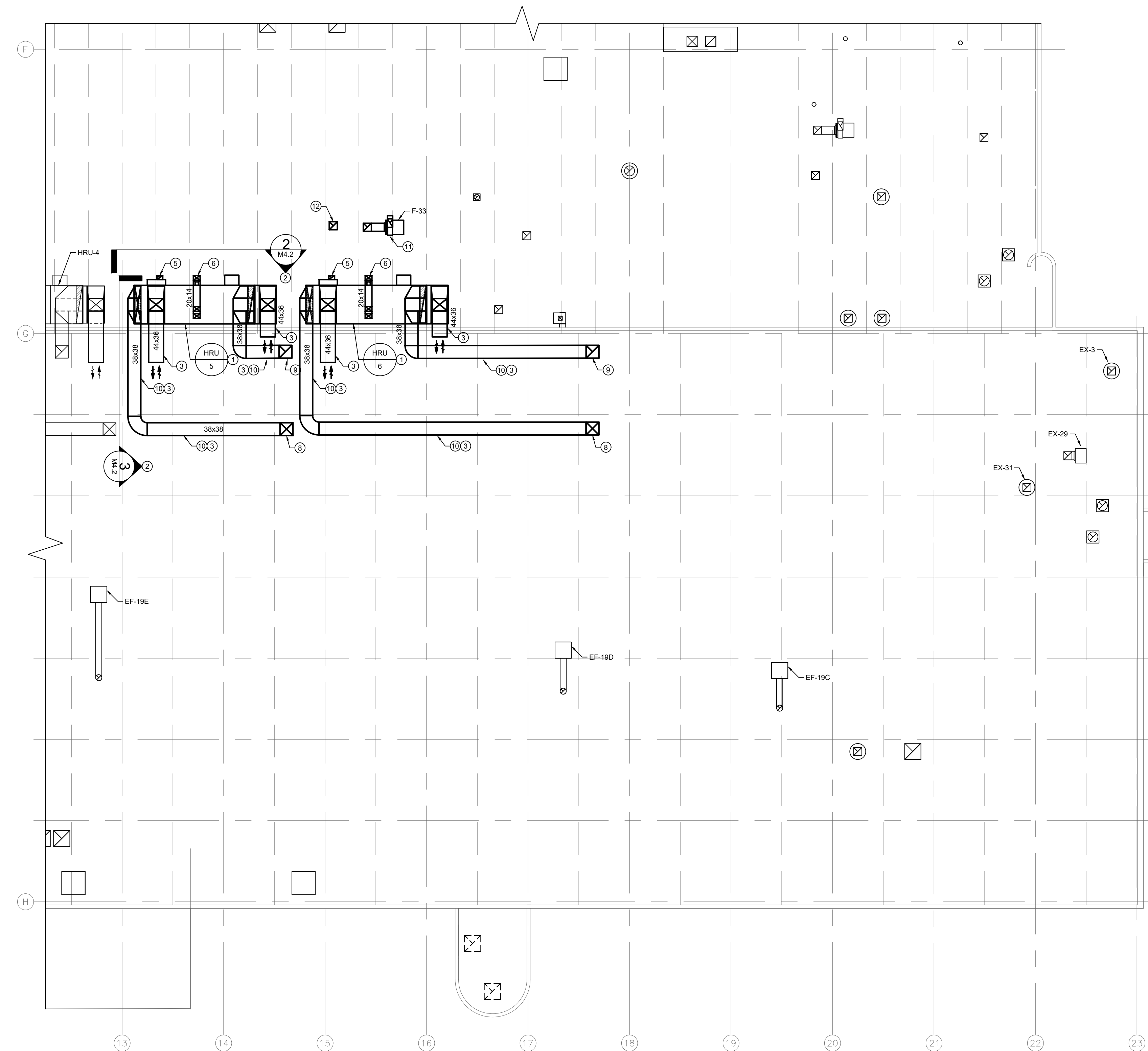
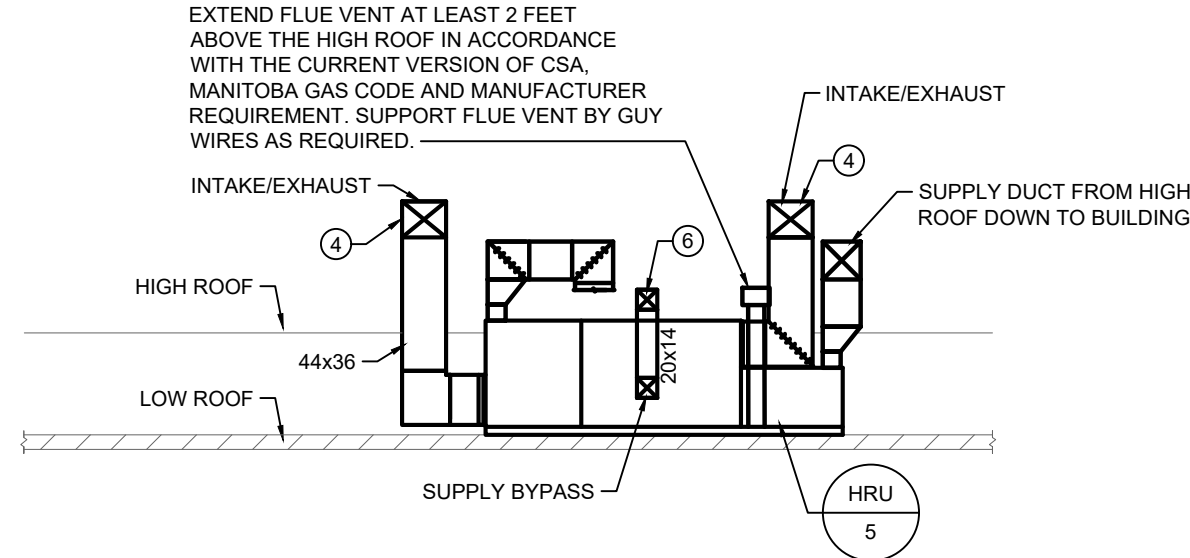


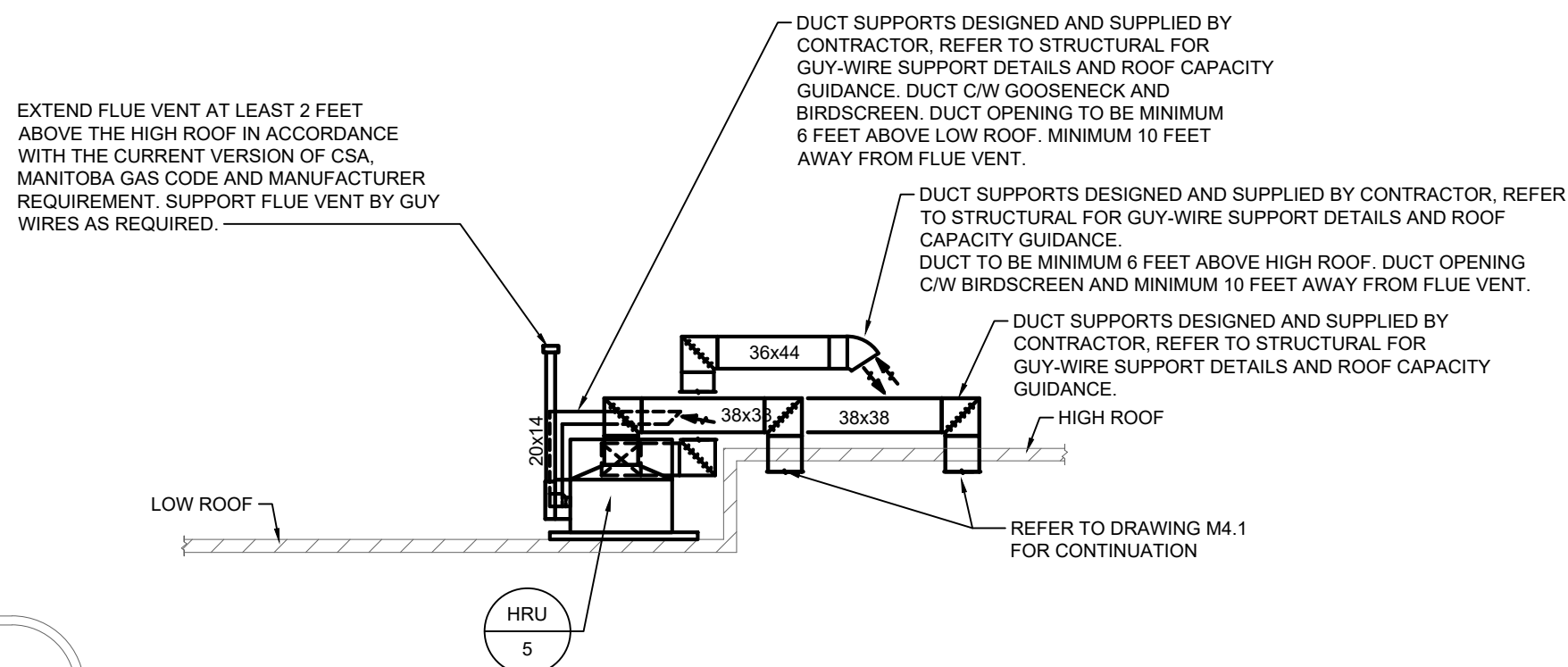
FILE NAME AND PATH: C:\Projects\2025\25-330 Transit East High Bay Ventilation Upgrade\0 CAD\3 Mess\PHASE 03\23330_M4.2_RV_R_1.dwg
LAYOUT: M4.2
LAST SAVED BY: jh
DATE PLOTTED: January 9, 2026 8:15:28 AM



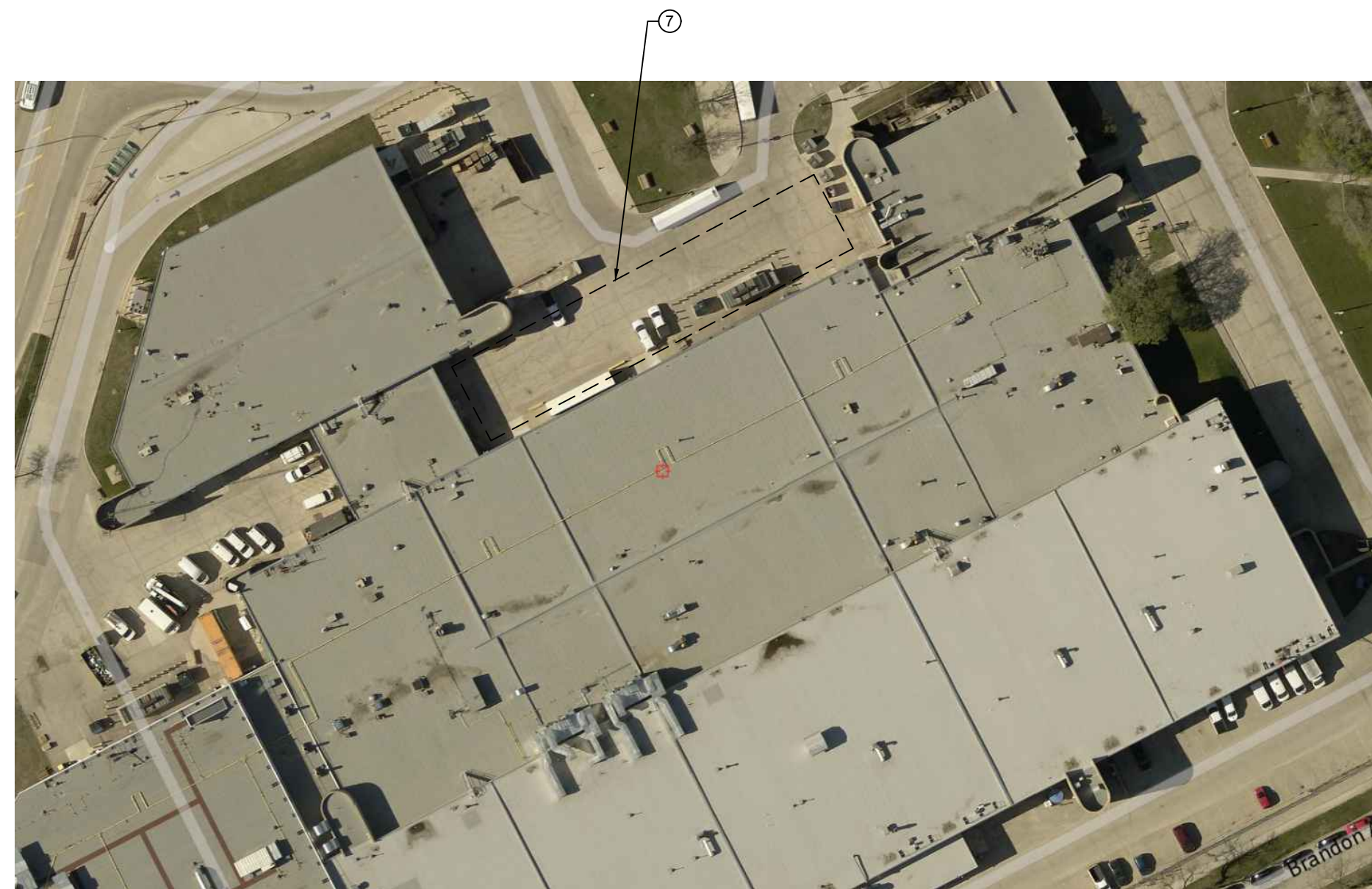
1 PARTIAL ROOF PLAN - VENTILATION - NEW CONSTRUCTION
SCALE: 1/16"=1'-0"



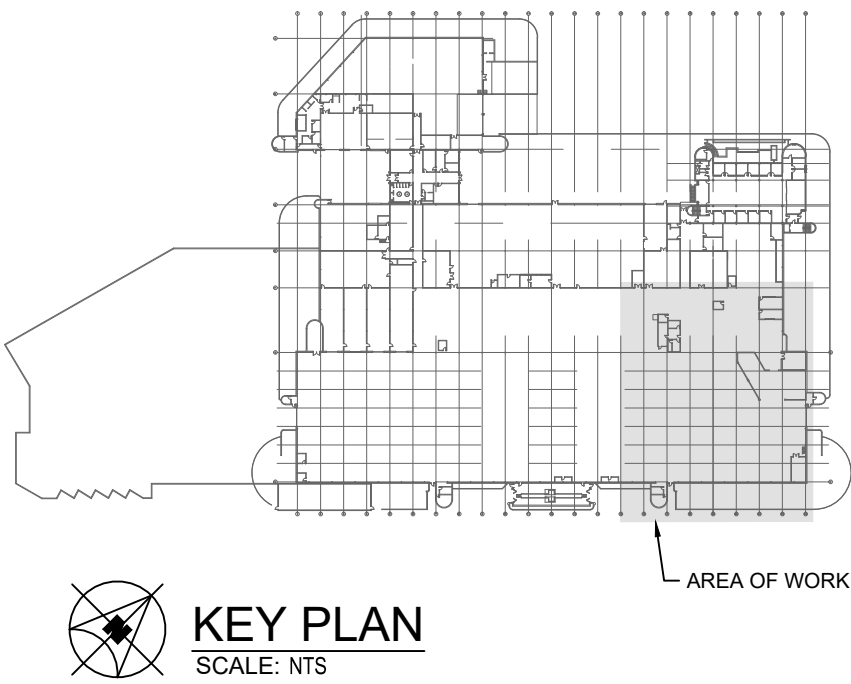
2 HRU SECTION VIEW
SCALE: NTS



3 HRU SECTION VIEW
SCALE: NTS



4 HRU CRANE LOCATION
SCALE: NTS



GENERAL NOTES

- ALL ABANDONED EQUIPMENT AND SERVICES WITHIN AREA OF WORK SHALL BE REMOVED.
- THIS BUILDING MAY CONTAIN ASBESTOS. REFER TO FRONT END SPECIFICATIONS FOR FURTHER INFORMATION.
- PRIOR TO DEMOLISHING AND REMOVAL OF THE EXISTING EQUIPMENT, COORDINATE WITH THE CITY. RETURN EQUIPMENT TO THE CITY AS REQUIRED.
- FOR DRAWING CLARITY, NOT ALL MECHANICAL EQUIPMENT, PIPING AND DUCTWORK HAS BEEN SHOWN.

KEY NOTES

- NEW HRU: PRE-PURCHASED UNDER A SEPARATE SUPPLY AND DELIVERY CONTRACT. MECHANICAL CONTRACTOR SHALL ACCEPT DELIVERY OF UNITS AT SITE AND BE RESPONSIBLE FOR OFFLOADING THE UNITS.
- REFER TO DETAIL DRAWINGS ON THIS SHEET.
- REFER TO SPECIFICATION SECTION 238010 CLAUSE 2.3.2 FOR DUCT PRESSURE CLASS CONSTRUCTION REQUIREMENTS.
- PROVIDE NEW DUCT TO HRU OPENING C/W GOOSENECK AND BIRDSCREEN.
- EXTEND HRU FLUE VENT ABOVE HIGH ROOF. CONTRACTOR TO COORDINATE FINAL HEIGHT ON SITE.
- PROVIDE NEW DUCT TO BYPASS INTAKE C/W GOOSENECK AND BIRDSCREEN.
- CONTRACTOR IS RESPONSIBLE FOR COORDINATING DELIVERY OF HRU'S TO SITE AND ALL COSTS OF STORING THE HRU'S OFFSITE AS REQUIRED. THE NORTH SIDE OF EXISTING BUILDING MAY BE A SUITABLE LOCATION TO CRANE BUT WOULD REQUIRE FINAL REVIEW AND DISCUSSION WITH TRANSIT. CONTRACTOR SHALL BE RESPONSIBLE FOR ALL COSTS AND COORDINATE WITH THE CITY TO ACCOMPLISH CRANING PROCEDURES. NO ADDITIONAL PAYMENT WILL BE PROVIDED FOR OVERTIME WORK.
- SUPPLY AIR DUCT DOWN TO THE BUILDING FROM HIGH ROOF. REFER TO DRAWING M4.1 FOR CONTINUATION.
- EXHAUST AIR DUCT FROM BUILDING UP THROUGH HIGH ROOF. REFER TO DRAWING M4.1 FOR CONTINUATION.
- DUCT ON ROOF TO BE ELEVATED FROM FINISHED ROOFING.
- RELOCATE EXISTING INTAKE FAN AND ASSOCIATED DUCTWORK THROUGH ROOF TO APPROXIMATELY THIS LOCATION. ENSURE REQUIRED CLEARANCES FROM HRU ARE MAINTAINED. EXACT LOCATION TO BE DETERMINED ON SITE.
- RELOCATE EXISTING EXHAUST DUCT THROUGH ROOF TO APPROXIMATELY THIS LOCATION. ENSURE REQUIRED CLEARANCES FROM HRU ARE MAINTAINED. EXACT LOCATION TO BE DETERMINED ON SITE.



Winnipeg Transit

 ENGINEERS GEOSCIENTISTS MANITOBA Certificate of Authorization SMS Engineering Ltd. No. 166						 770 Bradford Street Winnipeg, Canada (204) 775-0291 smseng.com		Project Title TRANSIT MAINTENANCE AND REPAIR BUILDING MECHANICAL UPGRADE - EAST HIGH BAY	Drawing Title PARTIAL ROOF PLAN - VENTILATION - NEW CONSTRUCTION	Drawn By AP Checked By AJ Approved By JH Scale AS NOTED Date MARCH 2026 Project No. 25-330-01	Revision Number 0 Drawing Number M4.2 Sheet Order 10 OF 10
0	ISSUED FOR CONSTRUCTION	JH	27/03/2026					WINNIPEG	MAINTOBA		
LETTER OR NUMBER	DESCRIPTION	BY	DDMMYY								