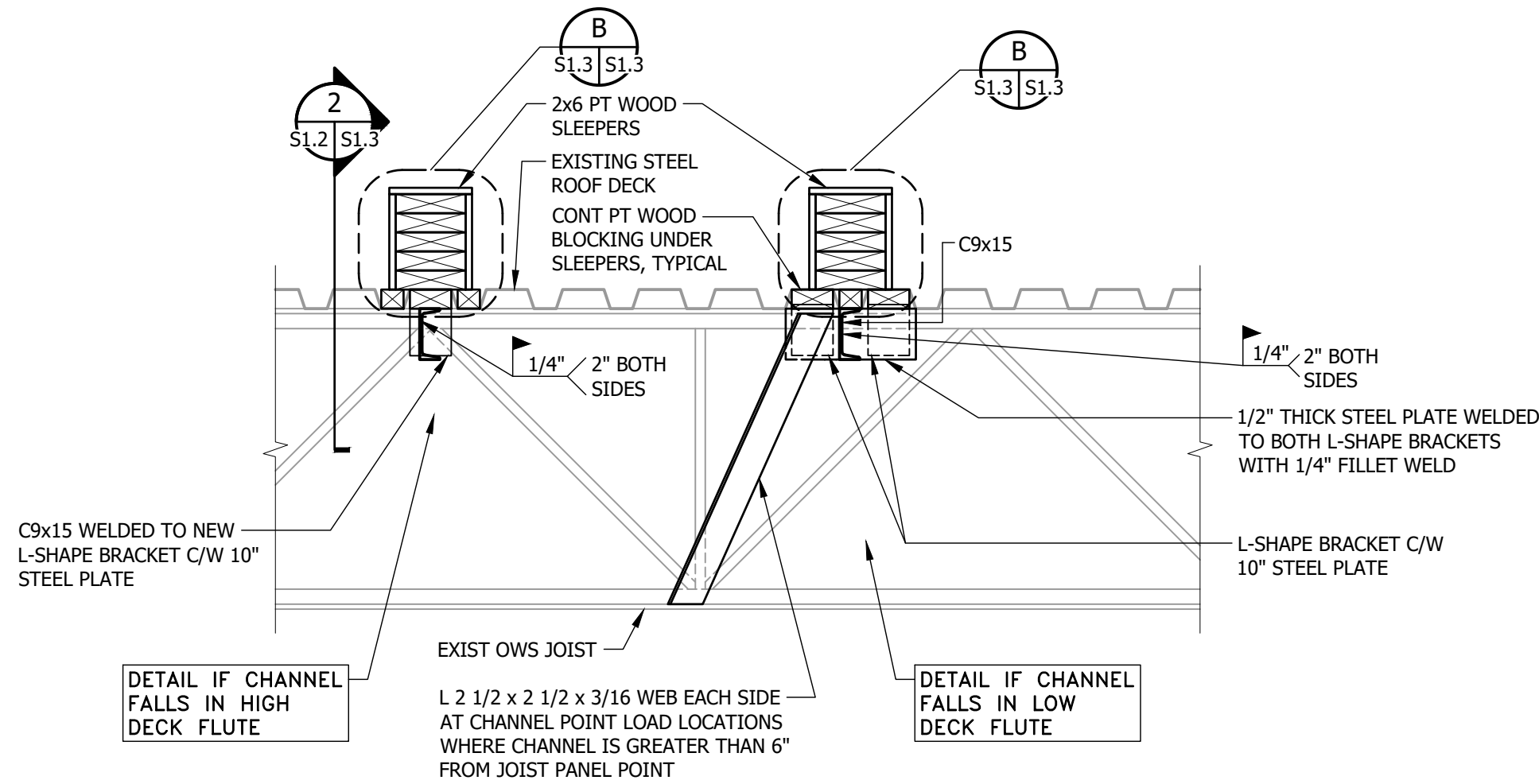
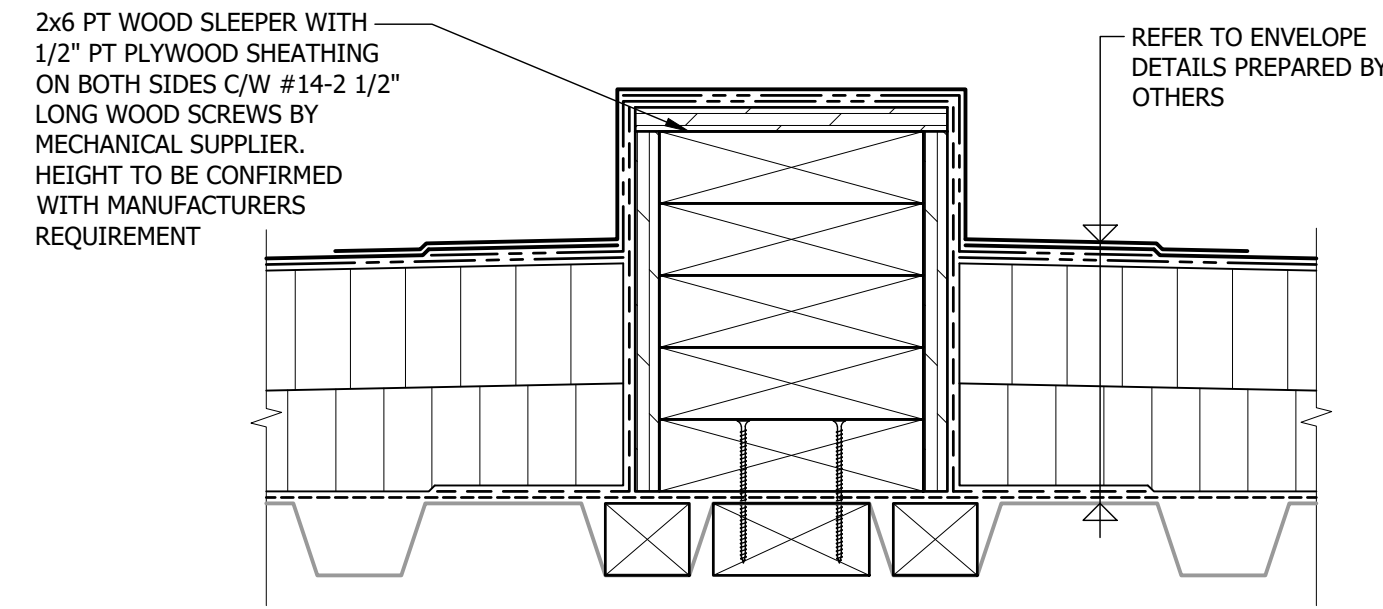


**2 SECTION**  
S1.2 S1.3 1'-1/2" = 1'-0"

- TYPICAL CHANNEL TO EXISTING JOIST CONNECTION DETAIL
- EXISTING STEEL DECK NOT SHOWN FOR CLARITY

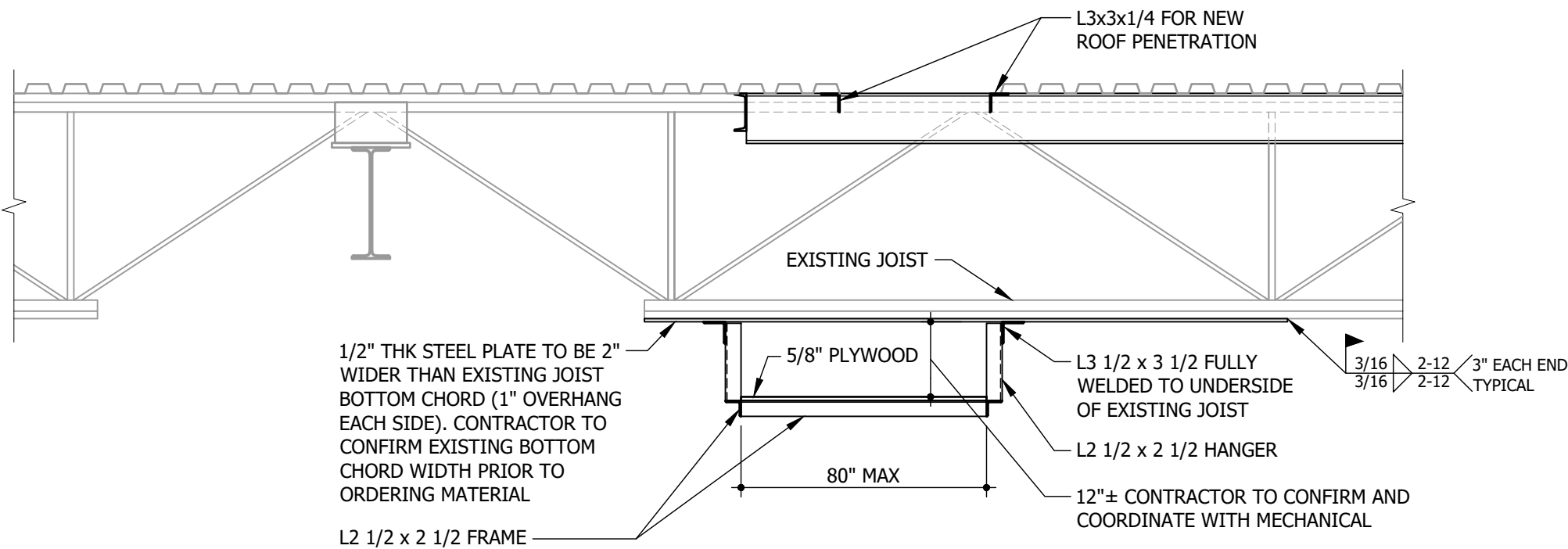


**SUPPLEMENTAL STEEL SUPPORT BELOW MECHANICAL UNITS**  
S1.3 1" = 1'-0"

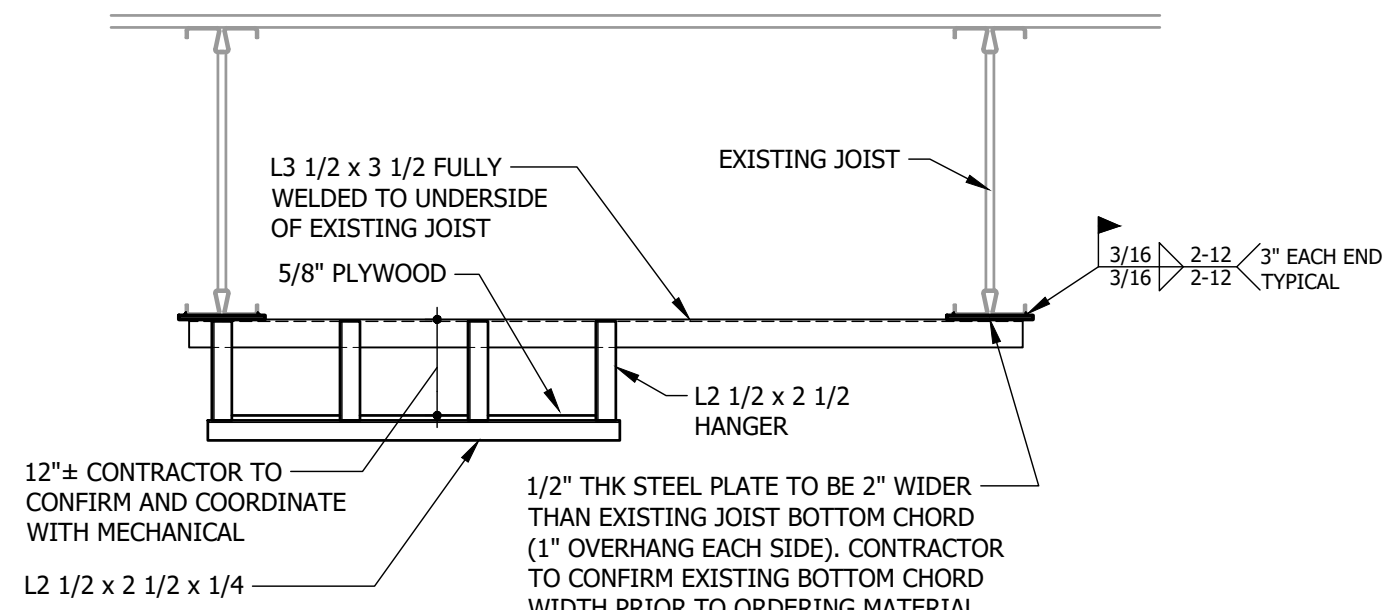


**B WOOD SLEEPER DETAIL**  
S1.3 S1.3 3" = 1'-0"

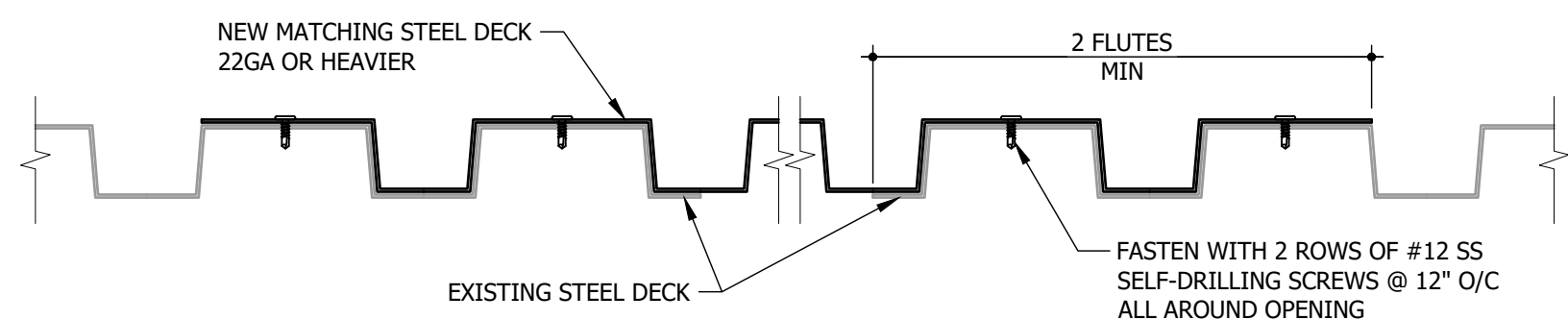
- SCREWS NOT SHOWN FOR CLARITY
- CONTRACTOR TO PROVIDE PHOTOS OF WOOD BLOCKING IN STEEL DECK HIGH AND LOW FLUTES PRIOR TO SLEEPER INSTALLATION.



**3 SECTION**  
S1.2 S1.3 1/2" = 1'-0"



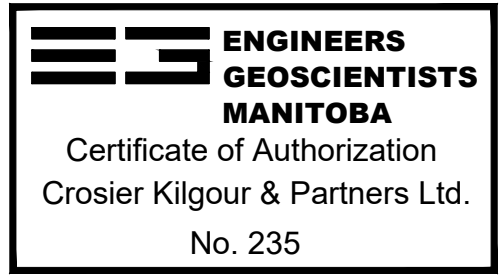
**4 SECTION**  
S1.2 S1.3 1/2" = 1'-0"



**C TYPICAL STEEL DECK REPAIR DETAIL**  
S1.3 3" = 1'-0"

- CONTRACTOR TO CONFIRM NO ELECTRICAL CONDUIT IN FLUTES PRIOR TO INSTALLING SCREWS
- CONTRACTOR CONTACT STRUCTURAL CONSULTANT FOR FURTHER ANALYSIS IF EXISTING OPENING EDGE PERPENDICULAR TO FLUTES IS LARGER THAN 16"

FILE NAME AND PATH: C:\Users\Kurt\OneDrive - Crosier Kilgour & Partners Ltd. - Transit Maintenance HVAC Upgrade Phase 3 - General\05 Drawings\0205-0048 - Transit HVAC Upgrade.dwg  
LAYOUT: S1.3  
LAST SAVED BY: Kurt Fougen  
DATE PLOTTED: February 9, 2026 2:53:37 PM



0	ISSUED FOR CONSTRUCTION	JAL	27/03/26
LETTER OR NUMBER	DESCRIPTION	BY	DD/MM/YY



Project Title	TRANSIT MAINTENANCE AND REPAIR BUILDING MECHANICAL UPGRADE - EAST HIGH BAY	Drawing Title	SECTION AND DETAILS
WINNIPEG	MAINTOBA	Drawn By	KGT
		Checked By	AL
		Approved By	JAL
		Scale	AS NOTED
		Date	MARCH 2026
		Project No.	25-330-01
		Revision Number	0
		Drawing Number	S1.3
		Sheet Order	3 OF 3

