

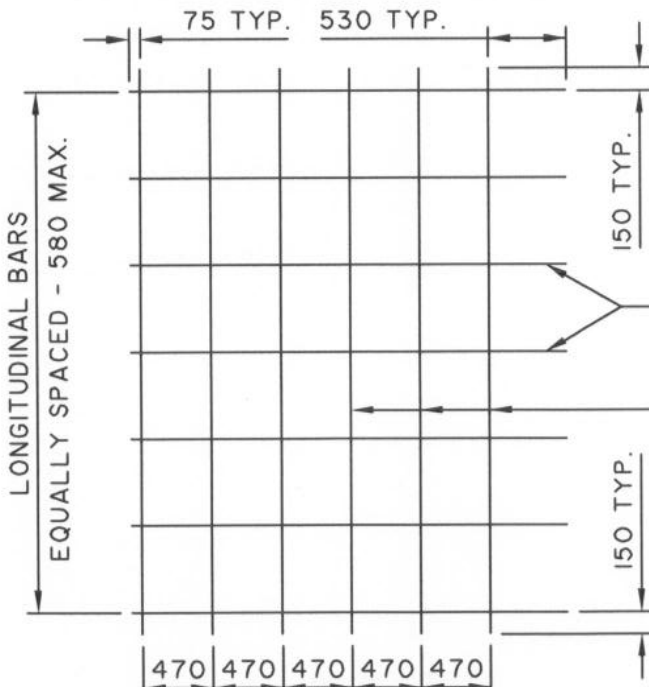
**BAR MAT 'A' REINFORCEMENT**

12.7mm LONGITUDINAL PLIAN BARS, 2500 LONG.

12.7mm TRAVERSE PLAIN BARS, LENGHT OF BARS = SLAB WIDTH - 150

**NOTE**

- 1) ALL BAR MAT JOINTS TO BE ELECTRICALLY SPOT WELDED.
- 2) ALL DIMENSIONS ARE TO CENTRES OF BARS.



**BAR MAT 'B' REINFORCEMENT**

12.7mm LONGITUDINAL PLAIN BARS, 2955 LONG.

12.7mm TRANSVERSE PLAIN BARS, LENGTH OF BARS = SLAB WIDTH - 150

DIMENSIONS ARE IN MILLIMETRES



**THE CITY OF WINNIPEG**  
PUBLIC WORKS DEPARTMENT

Reference Spec. No.  
CW 3230, CW 3310

Revisions			
No.	Date	Description	By
1.	JAN. 03	GENERAL REVISION	lwb

**LAYOUT FOR TYPE "A" AND "B"  
BAR MAT REINFORCEMENT  
5000 JOINT SPACING**

Designed By: B.P.	Drawn By: A.R.	Scale : <b>N.T.S.</b>
Checked By: D.R.K.	Date: 03-01-28	Drawing No. <b>SD-217</b>
Approved: SURFACE WORKS COMMITTEE		