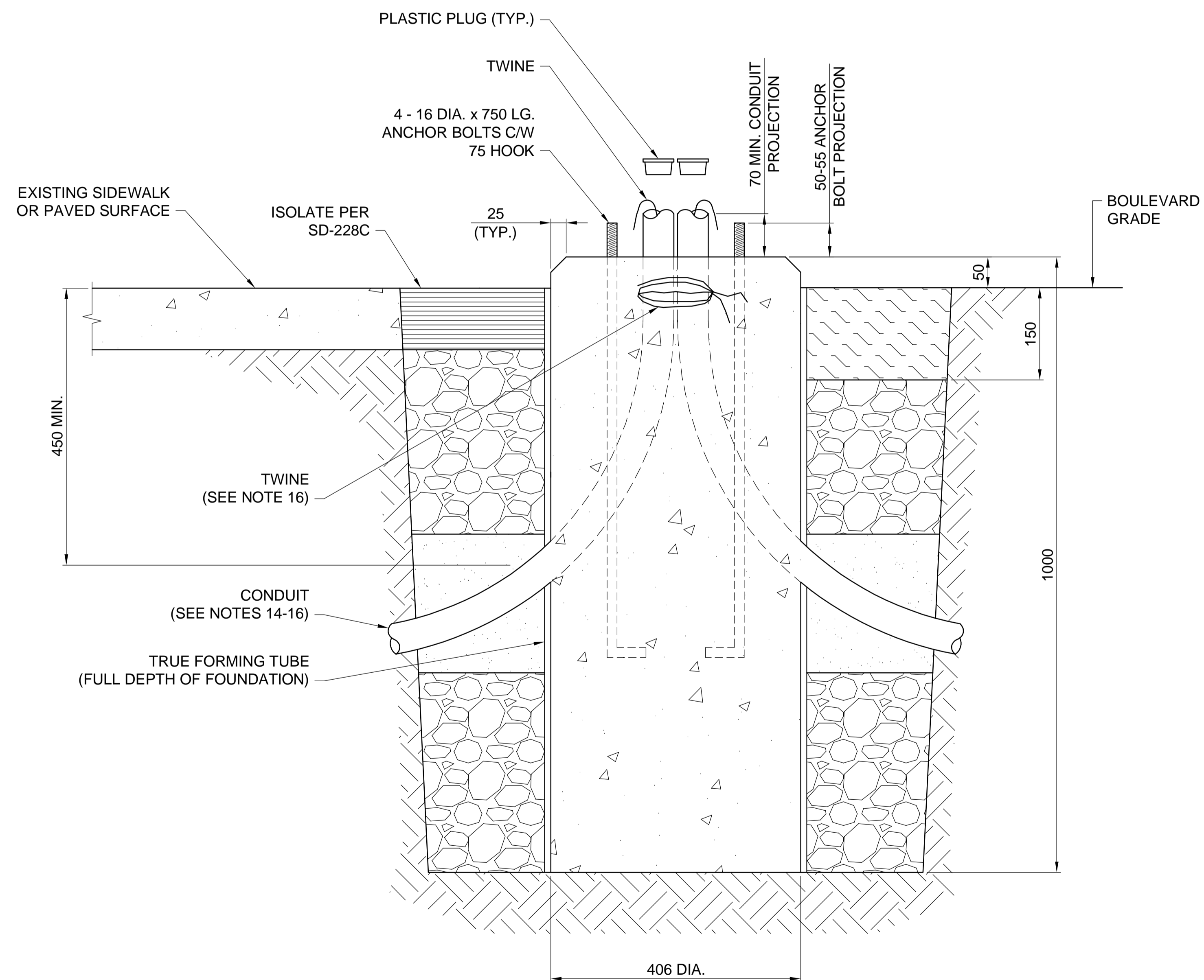


**PLAN**  
1:5



**A SECTION**  
1:5

**NOTES**

**INSTALLATION:**

1. LOCATE THE PILE BY MARKING THE CENTER AND OFFSET LOCATIONS BEFORE EXCAVATING.
2. EXCAVATION SHALL BE BY SOFT DIG OR AUGER DRILL.
3. FOUNDATION SHALL BE FORMED WITH 406 mm DIA. TRUE FORMING TUBE.
4. FOLLOWING A MINIMUM 24 HOUR CONCRETE CURING PERIOD, THE CONTRACTOR SHALL:
  - 4.1. REMOVE AND SALVAGE BASE TEMPLATE, NUTS AND TOP RING FORM.
  - 4.2. STRIP THE TOP PORTION OF THE TUBULAR FORMS MINIMUM 150 mm BELOW FINISHED PAVED SURFACE OR BOULEVARD GRADE.
  - 4.3. REMOVE SOILS OR STAINS FROM THE EXPOSED CONCRETE.
5. BACKFILL SHALL CONFORM TO THE REQUIREMENTS OF SD-342.

**ANCHOR BOLTS:**

6. ANCHOR BOLTS SHALL BE SUPPLIED BY CONTRACT ADMINISTRATOR. ANCHOR BOLT TEMPLATE AND TOP RING FORM SHALL BE SUPPLIED BY THE CONTRACTOR.
7. ANCHOR BOLTS SHALL BE ASTM F1554, MINIMUM YIELD STRENGTH OF 380 MPa (50 ksi).
8. ALL PARTS OF THE ANCHOR BOLT ASSEMBLY (1 STRUCTURAL ANCHOR BOLT, 2 FINISH NUTS, 2 FLAT WASHERS) SHALL BE HOT DIP GALVANIZED (FULL LENGTH) IN ACCORDANCE WITH THE LATEST EDITION OF ASTM A123 WITH NET RETENTION OF 610 g/m<sup>2</sup>.
9. ALL NUTS SHALL BE TAPPED OVERSIZE PRIOR TO GALVANIZING.
10. VERIFY ORIENTATION OF ANCHOR BOLTS WITH SITE LAYOUT DRAWINGS.
11. REFER TO INTERSECTION DESIGN DRAWINGS AND SD-318 FOR ALIGNMENT OF ANCHOR BOLTS.
12. THREADED PORTION OF ANCHOR BOLTS SHALL BE PROTECTED FROM FOULING PRIOR TO CONCRETE POUR.
13. ANCHOR BOLT PROJECTION SHALL BE 50-55 mm.

**CONDUITS:**

14. CONDUITS SHALL HAVE A MINIMUM BEND RADIUS OF 500 mm.
15. VERIFY ORIENTATION AND DIAMETER OF CONDUITS WITH SITE LAYOUT DRAWINGS.
16. ALL CONDUITS SHALL BE BUNDLED INTO A GROUP IN CENTER OF BASE AND TIED TOGETHER BELOW THE TOP OF THE BASE PRIOR TO CONCRETE POUR. INSTALL PLASTIC PLUGS PRIOR TO CONCRETE POUR.

**CONCRETE BASE:**

17. CONCRETE SHALL BE IN ACCORDANCE WITH CAN/CSA SPECIFICATION: A23.1 (LATEST EDITION).
  - 17.1. CEMENT: TYPE HS SULPHATE RESISTANT, S1 EXPOSURE.
  - 17.2. CONCRETE STRENGTH: 35 MPa AT 56 DAYS.
  - 17.3. MAXIMUM AGGREGATE SIZE: 20 mm.
  - 17.4. AIR CONTENT: 5 - 8%.
18. ALL EXPOSED CONCRETE EDGES SHALL HAVE A 25 mm CHAMFER.

METRIC

WHOLE NUMBERS INDICATE MILLIMETRES  
DECIMALIZED NUMBERS INDICATE METRES



B.M. ELEV. --	DESIGNED BY MNA				CITY DRAWING NUMBER SD-315.D
	DRAWN BY MDG				SHEET 1 OF 1
	CHECKED BY MNA/DRA				CONSULTANT DRAWING NUMBER N/A
	APPROVED BY DRA				
	HOR. SCALE 1:5	RELEASED FOR CONSTRUCTION	CONSULTANT PROJECT NUMBER 23-5906		
	VERTICAL 1:5	DATE --			
1 ISSUED FOR CONSTRUCTION	23/06/14	DRA			
NO. REVISIONS	DATE	BY	DATE		