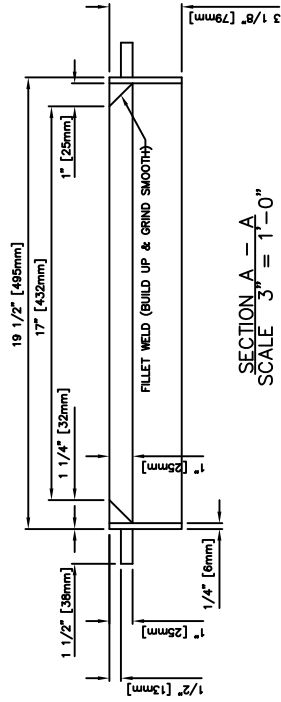
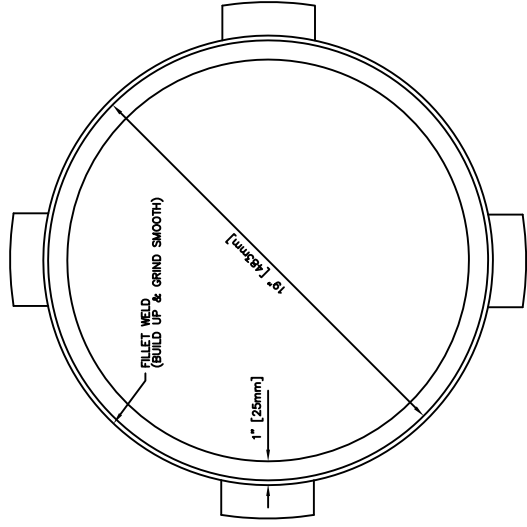


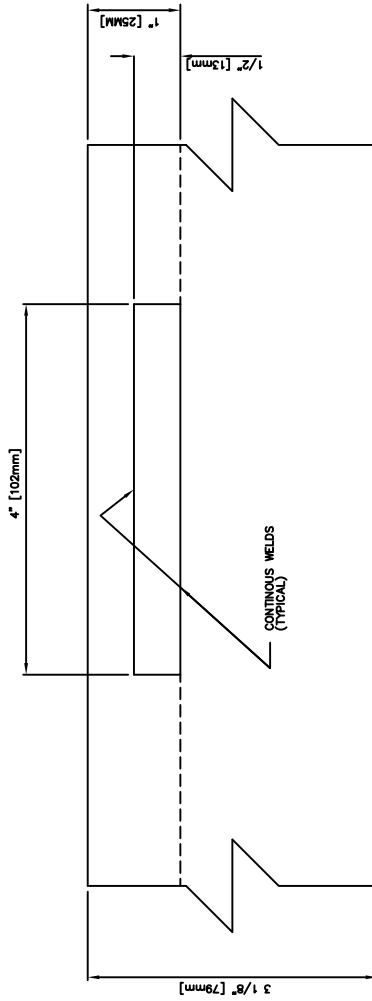
PLAN VIEW
SCALE 3" = 1'-0"



SECTION A - A
SCALE 3" = 1'-0"



BOTTOM VIEW
SCALE 3" = 1'-0"



SECTION B - B
SCALE 1" = 1"

NOTES.

1. TOP RING FORM REQUIRED FOR ST-60 BASE INSTALLATIONS.
2. RING = 1/4" THICK STEEL. HANDLES = 1/2" STEEL.
3. ALL WELDS ON TOP & BOTTOM SURFACES SHALL BE CONTINUOUS AND GROUND SMOOTH.
4. IMPERIAL ARE IN WHOLE NUMBERS AND METRIC NUMBERS ARE IN BRACKETS.
5. TOP SURFACE TO BE GRIND SMOOTH.
6. COPIES OF ORIGINAL DRAWINGS AVAILABLE FROM TRAFFIC SIGNALS.

REFERENCE SPEC. NO.	CW 3620	ENGINEER'S SEAL	
DESIGNED BY	CHECKED BY	SCALE AS NOTED	DATE
DRAWN BY lwb	APPROVED BY		
		REVISIONS	NO. DATE BY