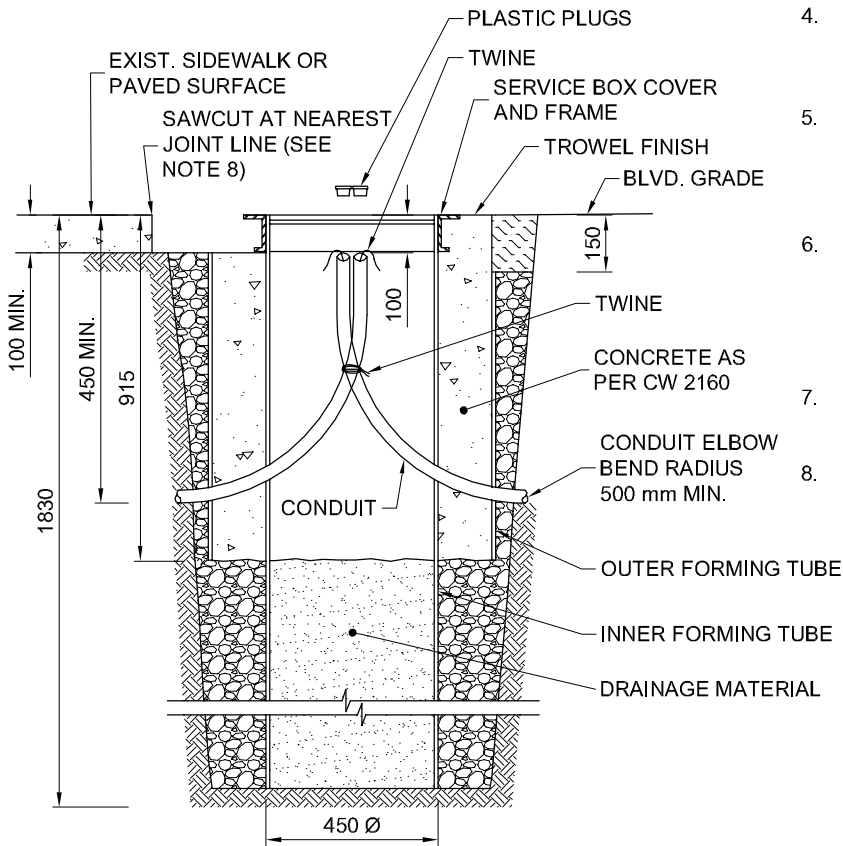


PLAN VIEW



SECTION A-A

NOTES:

1. INSTALL 450 mm Ø TRUE INNER FORMING TUBE TO THE BOTTOM OF THE EXCAVATION. FILL THE TUBE WITH DRAINAGE MATERIAL, TO DEPTH SHOWN.
2. INSTALL 760 mm Ø TRUE OUTER FORMING TUBE, CONCENTRIC WITH THE INNER FORM AND SUPPORTED BY THE COMPACTED BACKFILL.
3. ALL CONDUITS MUST BE BUNDLED INTO A GROUP IN CENTRE OF BASE, AND TIED TOGETHER BELOW THE TOP OF THE BASE PRIOR TO CONCRETE POUR. INSTALL PLASTIC PLUGS PRIOR TO CONCRETE POUR.
4. INSTALL SERVICE BOX COVER TO BE FLUSH WITH PAVEMENT, SIDEWALK OR BOULEVARD FINISH GRADE.
5. CONCRETE SHALL CONFORM TO REQUIREMENTS OF CW 2160 (LATEST EDITION) FOR TYPE A STRUCTURES (MONOLITHIC SEWERS AND REINFORCED STRUCTURES).
6. FOLLOWING 24 HOUR MINIMUM CONCRETE CURING TIME, STRIP THE TOP PORTION OF THE OUTER TUBULAR FORM A MINIMUM 150mm BELOW FINISHED PAVED SURFACE OR BOULEVARD GRADE.
7. BACKFILL SHALL CONFORM TO REQUIREMENTS OF SD-342.
8. POUR TOP OF SERVICE BOX MONOLITHICALLY WITH ADJACENT SIDEWALK (BY OTHERS).

DIMENSIONS ARE IN MILLIMETRES  
(UNLESS OTHERWISE NOTED)



**THE CITY OF WINNIPEG**  
PUBLIC WORKS DEPARTMENT

Revisions

Reference Spec. No.  
CW 3620-R5

No.	Date	Description	By
3	12/11/14	REVISED BY DILLON CONSULTING	DBW
2	FEB. 92	DRAINAGE MATERIAL	
1	OCT. 90	DRAINAGE MATERIAL	

SERVICE BOX – CAST IN PLACE

Designed By: C.K.	Drawn By: A.R.	Scale : N.T.S.
Checked By: -	Date: 95-03-06	Drawing No.
Approved:		SD-320