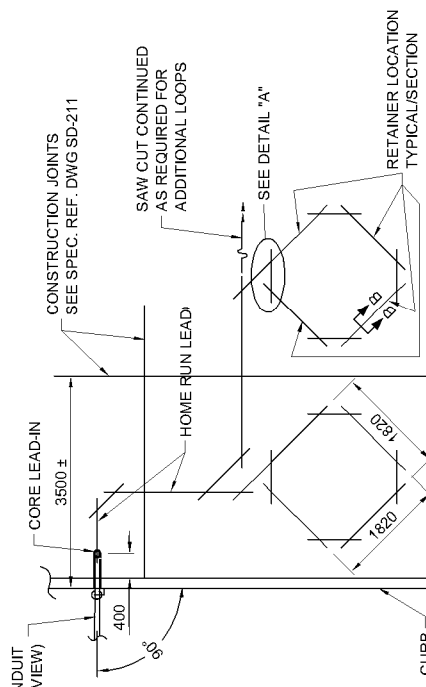


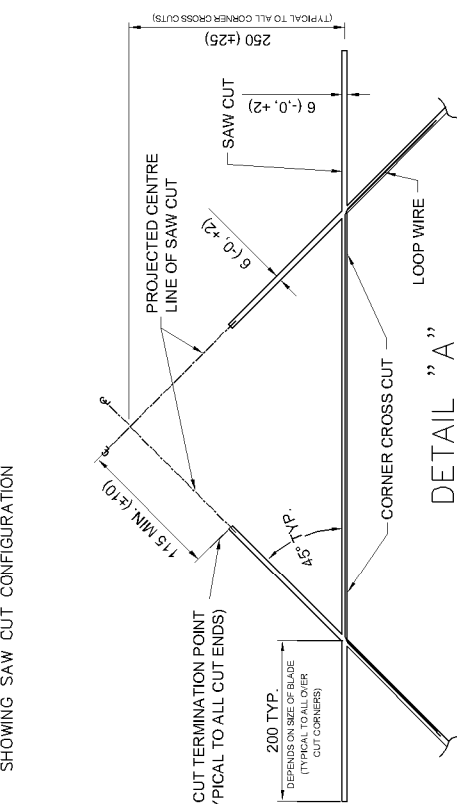
**TYPICAL PLAN VIEW**  
SHOWING SAW CUT CONFIGURATION

NOTES:

1. MARK AND CUT THE LOOP IN THE LOCATION SUPPLIED ON THE CONSTRUCTION DRAWING.
2. MEASURE AND CONFIRM ADEQUATE WIRE SLOT DEPTH PRIOR TO INSTALLING AND TESTING THE LOOP WIRE.
3. HOME RUN LEAD MUST EXIT DETECTOR LOOP FROM EITHER END OF MOST "CENTRE OF LANE" ANGLE CUT AND REMAIN IN CENTRE AREA OF LANE PARALLEL TO CURB UNTIL A 90° ENTRY CAN BE MADE TO THE LEAD-IN.
4. EXISTING CORE LEAD-IN DIMENSION MAY VARY.
5. SAW THROUGH FULL DIAMETER OF CORE LEAD-IN PIPE TO ENSURE FULL DEPTH IS MAINTAINED AT LOWER ENTRY POINT.
6. INSTALL OAKUM AFTER LOOP WIRE INSTALLED AND BEFORE JOINT SEALANT PLACED.
7. MAXIMUM TWO LOOPS PER HOME RUN.



**PROFILE VIEW**  
SHOWING DETECTOR FEEDER PIPE INSTALLATION



**SECTION B-B**  
SAW CUT CROSS SECTION DETAIL  
SHOWING WIRE/RETAINER/SEALANT PLACEMENT WITHIN SAW CUT

DIMENSIONS ARE IN MILLIMETRES  
(UNLESS OTHERWISE NOTED)

<p>Reference Spec. No. CW 3620</p>		<p>Scale: N.T.S.</p>	
		<p>Designed By: N.K.B.</p>	<p>Drawn By: B.H.</p>
<p>Revisions</p>		<p>Checked By: N.K.B.</p>	<p>Date: 09/03/25</p>
		<p>Approved:</p>	<p>Drawing No. SD-330</p>
No.	Date	Description	By
3	12/11/14	REVISED BY DILLON CONSULTING	DBW
2	09/03/09	REVISED CONSTRUCTION NOTES	N.B.
1	01/03/26	REVISED TO SIGNALS SPEC/CAO FILE	N.B.