

Contexte

Le quartier de Windsor Park compte plusieurs petits parcs. Dans deux d'entre eux, soit les parcs Agate et Durham, les équipements de jeu figurent parmi les plus vieux du secteur et doivent être remplacés. On dispose d'un montant maximal de 210 000 \$ pour réaménager les parcs Agate et Durham grâce au programme d'amélioration des parcs et des loisirs. Afin de répondre aux différents besoins des usagers en matière de loisirs, la Ville de Winnipeg (la Ville) travaille de concert avec les intervenants et les résidents pour déterminer la meilleure façon d'investir pour l'avenir de ces deux parcs de quartier.

Participation

Le processus de participation visait à consulter les intervenants et la population afin de déterminer la meilleure façon d'améliorer deux parcs de quartier, cela dans le but de répondre aux besoins variés des différents usagers. Les avis concernant l'utilisation actuelle de ces parcs et ce que l'on devrait en faire ont été recueillis grâce à un tableau d'affichage à la nouvelle bibliothèque de Windsor Park, un sondage en ligne et un atelier en personne.

Promotion

Les activités de participation publique ont été annoncées au moyen de ce qui suit. Tout le contenu était fourni en français et en anglais, à moins d'indication contraire.

- Site Web de la Ville de Winnipeg
- Communiqué diffusé le 12 avril 2018
- Publications sur la page Facebook, qui compte 16 797 abonnés – quatre publications : 12, 15, 23 et 30 avril
- Publications sur le compte Twitter, qui compte 78 700 abonnés – quatre publications : 12, 15, 23 et 30 avril
- Bulletin de participation publique de la Ville de Winnipeg, qui compte plus de 5 300 abonnés – mention dans deux bulletins, le 12 et

le 26 avril – en anglais seulement

- Prospectus livré à environ 40 résidences entourant les deux parcs
- Annonce sur Facebook – en anglais seulement
- Invitation envoyée par courriel aux intervenants du quartier, dans laquelle on annonçait la tenue de l'atelier
- Tableau d'affichage à la bibliothèque de Windsor Park

Ce que nous avons retenu

Tableau d'affichage à la bibliothèque de Windsor Park

Pendant les deux semaines qui ont précédé l'atelier public, les visiteurs et visiteuses de la bibliothèque de Windsor Park ont eu l'occasion de laisser une note sur ce qu'ils appréciaient des équipements extérieurs dans le quartier de Windsor Park, ou ce qu'ils amélioreraient. Au total, 17 punaises ont été placées sur la carte. Des remarques générales sur le secteur ont été transmises aux membres du personnel de la Ville. Pour les parcs Agate et Durham, les remarques les plus courantes étaient les suivantes :

- Nécessité d'améliorer le parc Durham (trois remarques)
- Ajout d'arbustes et de plantes indigènes dans les deux parcs (deux remarques)

Atelier public

Durant l'atelier, les participants ont réalisé trois activités de groupe : ils ont passé en revue les options dans le secteur en matière de loisirs, ont parlé de l'utilisation et des avantages des deux parcs et ont classé les améliorations en ordre d'importance.

Lors de la dernière activité, les participants ont voté pour les équipements qu'ils préféreraient pour les parcs Durham et Agate. Tous les résultats de l'atelier sont fournis à l'annexe F. Le classement est fondé sur le nombre de votes pour chaque équipement.

Parc Durham

1. Nouvelle structure de jeu (27 votes)
2. Bancs/table de pique-nique (16 votes)
3. Arbustes et plantes indigènes/insectes pollinisateurs (15 votes)
4. Sentiers améliorés (14 votes)
5. Balançoires (6 votes)

6. Éclairage (3 votes)
7. Bac à sable (1 vote)

Parc Agate

1. Aire de détente/table de pique-nique (31 votes)
2. Équipement d'exercice (12 votes)
3. Borne de protection sur le chemin de fer (10 votes)
4. Balançoires (7 votes)
5. Structure de jeu (6 votes)

Sondage en ligne

Le sondage en ligne visait à recueillir l'avis des gens du quartier sur les problèmes dans les parcs, l'utilisation de ceux-ci et les points forts, ainsi que sur les équipements précis qu'ils aimeraient avoir.

Tous les résultats du sondage sont fournis à l'annexe G.

Parc Agate

- Selon les répondants, les priorités pour le parc Agate étaient les suivantes : remplacer ou améliorer l'équipement récréatif, considéré comme vieux et dangereux (28 %), remplacer ou améliorer les clôtures pour protéger les enfants des routes et du chemin de fer adjacent (25 %), améliorer l'éclairage (9 %), améliorer la gestion des déchets (9 %), rendre le parc, jugé ennuyeux, plus attrayant (9 %).
- Au total, 16 % des répondants ont indiqué qu'ils utilisaient le parc Agate tous les jours, 15 % ont dit l'utiliser chaque semaine et 14 % ont dit l'utiliser chaque mois, alors que 12 % ne l'utilisent qu'une fois par année. Seules les personnes qui ont dit visiter le parc devaient répondre aux questions sur la façon dont ils utilisaient le parc. Quarante-trois pour cent (43 %) des répondants n'avaient jamais visité le parc Agate.
- Les répondants ont indiqué se rendre au parc Agate principalement pour accompagner de jeunes enfants (77 %) et pour profiter du plein air (45 %).
- Les répondants ont précisé qu'ils utilisaient le plus souvent les balançoires (88 %), le portique d'escalade (70 %), la table de pique-nique (50 %) et le bac à sable (38 %).
- Les répondants qui visitent le parc ont dit que

les trois éléments qu'ils aimeraient le plus voir ajoutés ou améliorés sont un terrain de jeu pour les enfants de 2 à 12 ans (75 %), une nouvelle clôture (52 %) et des sentiers piétonniers (50 %).

Parc Durham

- Selon les répondants, les priorités pour le parc Durham étaient les suivantes : remplacer ou améliorer l'équipement récréatif, considéré comme vieux ou dangereux (39 %), ajouter de l'éclairage (9 %), ajouter des arbres ou de l'ombre (9 %).
- Au total, 5 % des répondants ont indiqué qu'ils utilisaient le parc Durham tous les jours, 21 % ont dit l'utiliser chaque semaine et 13 % ont dit l'utiliser chaque mois, alors que 16 % ne l'utilisent qu'une fois par année. Seules les personnes qui ont dit visiter le parc devaient répondre aux questions sur la façon dont ils utilisaient le parc. Quarante-cinq pour cent (45 %) des répondants n'avaient jamais visité le parc Durham.
- Les répondants ont indiqué se rendre au parc Agate principalement pour accompagner de jeunes enfants (73 %), pour profiter du plein air (58 %) et pour promener leur chien en laisse (22 %).
- Les répondants ont indiqué qu'ils utilisaient le plus souvent les balançoires (79 %), la glissade (55 %), le portique d'escalade (47 %) et le banc (39 %).
- Les répondants qui visitent le parc ont dit que les trois éléments qu'ils aimeraient le plus voir ajoutés ou améliorés sont un terrain de jeu pour les enfants de 2 à 12 ans (83 %), l'éclairage (54 %) et des sentiers piétonniers (39 %).

Date	Activité	Niveau de participation
Lancé le 12 avril 2018	Site Web	612 pages consultées
Du 12 avril au 3 mai 2018	Sondage en ligne	83 sondages remplis
Du 12 au 26 avril 2018	Tableau d'affichage	À la bibliothèque de Windsor Park; 17 punaises et notes placées sur le tableau
26 avril 2018	Atelier public	20 participants

Ce que nous avons retenu – éléments demandés	Inclusion dans les plans*
Nouvel équipement récréatif pour les enfants de toutes capacités	De nouvelles structures de jeu pour les enfants de 2 à 12 ans seront intégrées aux rénovations des deux parcs. Une balançoire accessible sera ajoutée à chaque parc. L'équipement récréatif comprendra diverses composantes qui favoriseront les interactions sociales et interpersonnelles, le jeu coopératif, le jeu imaginatif/cognitif, le développement de la motricité globale et fine ainsi que les activités axées sur le mouvement. Les terrains de jeu seront conçus selon les principes de conception universelle pour des jeux inclusifs, ce qui comprendra des jeux tactiles et auditifs, l'intégration d'éléments accessibles en fauteuil roulant et des aménagements appropriés pour les personnes atteintes d'une déficience visuelle.
Aires de détente et bancs	Des bancs et des tables de pique-nique seront placés dans les deux parcs, dans des aires de détente désignées. Une zone de silence sera aménagée dans le parc Agate.
Amélioration des sentiers	Le parc Agate comprendra un trottoir et une rampe d'accès en béton sur l'emprise, ainsi qu'un sentier accessible à surface granulée menant à la structure de jeu et à l'aire de détente. Le parc Durham comprendra un sentier accessible à surface granulée, des aires de détente ainsi qu'un sentier traversant le centre du parc. Mentionnons également que le trottoir en béton entre le parc Durham et la baie Durham sera remplacé.
Clôture	Une clôture en bois à poteaux et à rails sera installée au parc Agate et servira de barrière visuelle séparant le parc du sentier informel et du chemin de fer au-delà de la limite de propriété.
Biodiversité des plantes	Des arbustes à fleurs sont inclus dans les plans, autour de la zone de silence dans le parc Agate, cela afin d'attirer et d'alimenter les insectes pollinisateurs et d'accroître la biodiversité. Un arbre sera ajouté dans le parc Durham, à côté de la nouvelle structure de jeu, afin de créer plus d'ombre et d'accroître la biodiversité.
Aire gazonnée pour les sports d'extérieur	Les aires gazonnées demeureront intactes dans les deux parcs pour que les gens puissent pratiquer des sports et des loisirs de manière informelle, non organisée.
Solution aux excréments de chien	De nouvelles poubelles sont incluses dans les plans des deux parcs afin de faciliter l'élimination des excréments de chien.
Éclairage supplémentaire	Aucun éclairage supplémentaire n'est prévu dans les plans, compte tenu des coûts et des fonds limités dont on dispose.
Équipement d'exercice pour adultes au parc	Aucun équipement d'exercice pour adultes n'est prévu dans les plans, compte tenu des coûts et du fait que la population préfère grandement de

Agate

l'équipement récréatif pour enfants.

*Les éléments indiqués figurent dans les plans proposés et pourraient changer selon les autorisations et le financement.

Prochaines étapes

S'appuyant sur la rétroaction obtenue, l'équipe responsable du projet a soumis des plans dans le but d'offrir à la communauté des lieux de jeu, de loisirs et de rencontre.

Les plans comprennent de l'équipement récréatif accessible, plusieurs aires de détente, des équipements améliorés, de la végétation qui favorisera la biodiversité et alimentera les insectes pollinisateurs, des panneaux d'affichage, de nouvelles clôtures et bornes, ainsi que des sentiers et des trottoirs neufs et améliorés, et accessibles. Des espaces ouverts gazonnés seront conservés dans chacun des parcs.

Le contrat fera l'objet d'un appel d'offres au cours de l'été 2018. Les travaux de construction devraient commencer à l'automne 2018 ou au printemps 2019.

Les plans conceptuels sont fournis à l'annexe A.

Annexe A – Plans conceptuels

Annexe B – Communiqué

Annexe C – Publications dans les médias sociaux

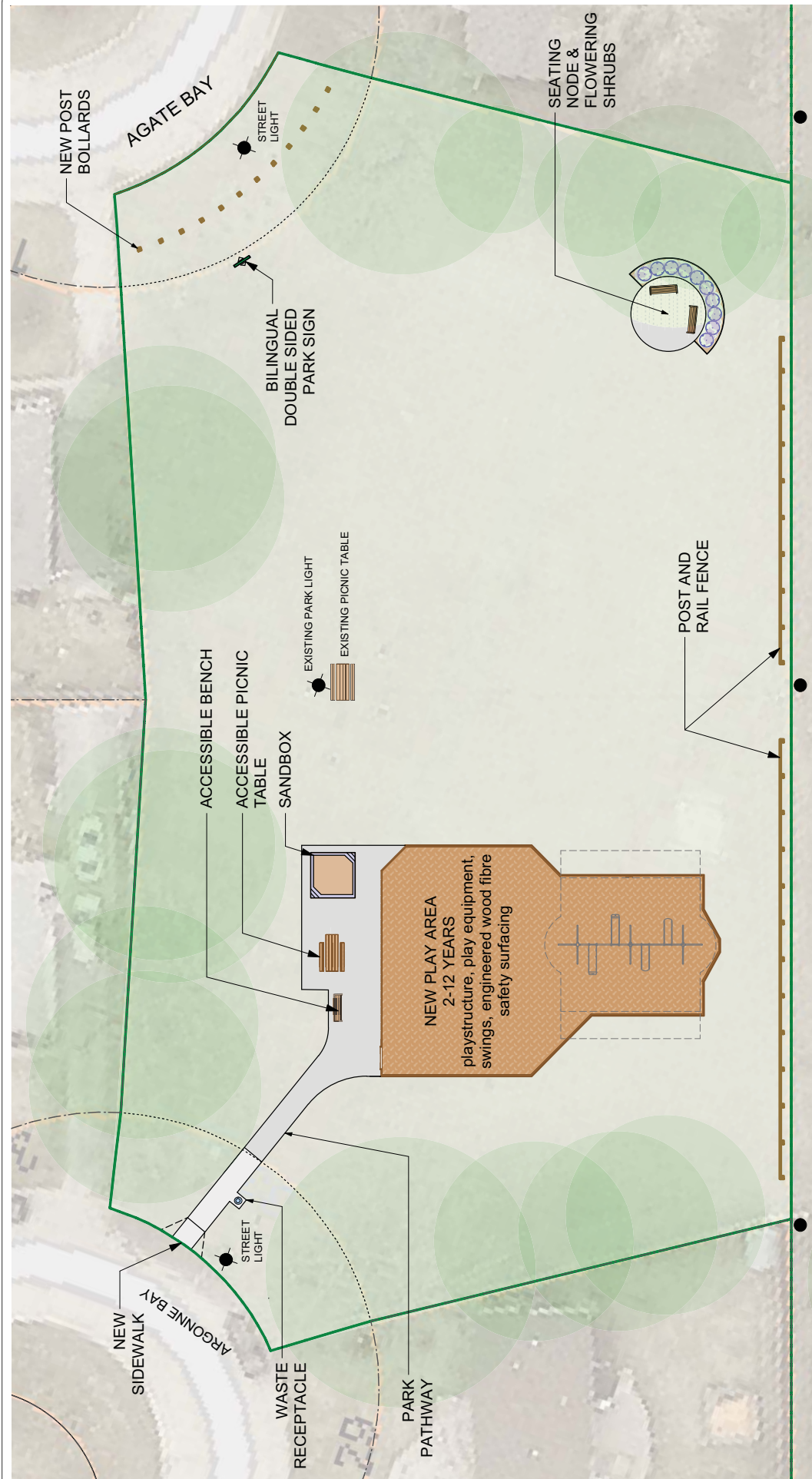
Annexe D – Tableau d'affichage, avec résultats

Annexe E – Cahier de consultation pour l'atelier

Annexe F – Tableaux de présentation et soumissions de l'atelier

Annexe G – Sondage en ligne, avec résultats

Appendix A - Conceptual designs



DRAWING TITLE

**Agate Park
Playground Redevelopment
Proposed Plan**

SITE ADDRESS 33 Argonne Bay



SCALE 1:250

DATE June 2018

THE CITY OF WINNIPEG
Planning, Property and Development Department
Planning and Land Use Division
Unit 15 - 30 Fort Street, Winnipeg, MB, (R3C 4X5)





THE CITY OF WINNIPEG
 Planning, Property and Development Department
 Planning and Land Use Division
 Unit 15 - 30 Fort Street, Winnipeg, MB, (R3C 4X5)



SCALE 1:450
 DATE June 2018

DRAWING TITLE
**Durham Park
 Playground Redevelopment
 Proposed Plan**
 SITE ADDRESS 57 DULUTH BAY

Appendix B - News release



INFORMATION - COMMUNIQUÉ

For immediate release
Thursday, April 12, 2018

Public invited to provide input on the redevelopment of two parks in the Windsor Park neighbourhood.

Winnipeg, MB – Winnipeggers are invited to attend a public workshop on April 24 to provide feedback on redeveloping two parks in the Windsor Park neighbourhood: Agate Park and Durham Park.

Agate Park (33 Argonne Bay) and Durham Park (57 Duluth Bay) have some of the most aged play equipment in the Windsor Park area and are in need of replacement. There is up to \$210,000 to redevelop these two parks through the Parks and Recreation Enhancement Program. To add to the diverse recreational needs of users, the City of Winnipeg is working with stakeholders and residents to determine the best way to invest in the future of these two neighbourhood parks.

The City wants to hear from the public to help determine future park enhancements at these two sites. The public can provide input through an online survey, or through an in-person workshop. The [online survey](#) will be open until May 1, 2018. The in-person public workshop will be held:

Date: Tuesday, April 24, 2018

Time: 6 p.m. to 8 p.m.

Location: Windsor Park Library, community room, [1195 Archibald St.](#)

Format: Brief presentation at 6 p.m., followed by table discussions

Those interested in attending are asked to [RSVP](#). For more information, please visit winnipeg.ca/WindsorParkparks.

-30-

Media inquiries should be directed to the City of Winnipeg Media Inquiry Line at 204-986-6000 or via email at City-MediaInquiry@winnipeg.ca.

Follow us on Facebook: facebook.com/cityofwinnipeg

Follow us on Twitter: twitter.com/cityofwinnipeg



INFORMATION - COMMUNIQUÉ

Pour publication immédiate

Le jeudi 12 avril 2018

Les membres du public sont invités à donner leur avis sur le réaménagement de deux parcs du quartier de Windsor Park

Winnipeg, Manitoba – La population winnipégoise est invitée à participer à un atelier public le 24 avril 2018 pour donner leur avis sur le réaménagement de deux parcs du quartier de Windsor Park : le parc Agate et le parc Durham.

Le parc Agate (33, baie Argonne) et le parc Durham (57, baie Duluth) ont des structures de jeu qui comptent parmi les plus vieilles de Windsor Park et qui doivent être remplacées. Par l'entremise du programme d'amélioration des parcs et des loisirs, un financement allant jusqu'à 210 000 \$ a été alloué au réaménagement de ces deux parcs. Pour répondre aux besoins divers des usagers en matière de loisirs, la Ville de Winnipeg travaille de concert avec les parties intéressées et les résidents en vue de déterminer la meilleure façon d'investir dans l'avenir de ces deux parcs de voisinage.

La Ville souhaite aborder ses citoyens en vue de déterminer quelles améliorations devraient être apportées aux deux sites. Les membres du public peuvent transmettre leur avis en répondant à un sondage en ligne ou en participant à un atelier en personne. On peut répondre au [sondage en ligne](#) jusqu'au 1^{er} mai 2018. L'atelier public aura lieu à la date, à l'heure et à l'adresse qui suivent :

Date : Mardi 24 avril 2018

Heure : 18 h - 20 h

Lieu : Salle communautaire de la bibliothèque de Windsor Park, au [1195, rue Archibald](#)

Format : Courte présentation à 18 h, suivie de discussions en groupe

On demande aux personnes qui souhaitent participer à l'atelier de [confirmer leur présence](#). Pour plus de renseignements, prière de visiter winnipeg.ca/parcsdewindsorpark.

Les médias peuvent obtenir des renseignements directement de la ligne des médias de la Ville de Winnipeg, au 204-986-6000, ou par courrier électronique, à City-MediaInquiry@winnipeg.ca.

Suivez-nous sur Facebook : facebook.com/cityofwinnipeg

Suivez-nous sur Twitter : twitter.com/cityofwinnipeg

Appendix C - Sample social media posts



City of Winnipeg – Municipal Government



Published by Hootsuite [?] · April 23 · 🌐

How do you use the greenspaces in Windsor Park? Come to a public workshop tomorrow to discuss improvements to Agate Park and Durham Park.

Learn more or fill out an online survey at winnipeg.ca/WindsorParkparks



 1,068 people reached

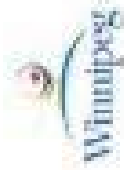
Boost Post

 Like

 Comment

 Share





City of Winnipeg  @cityofwinnipeg · Apr 15

How do you use parks in Windsor Park? We're looking for your feedback!

bit.ly/2DCchTi #engagewpg



1



3

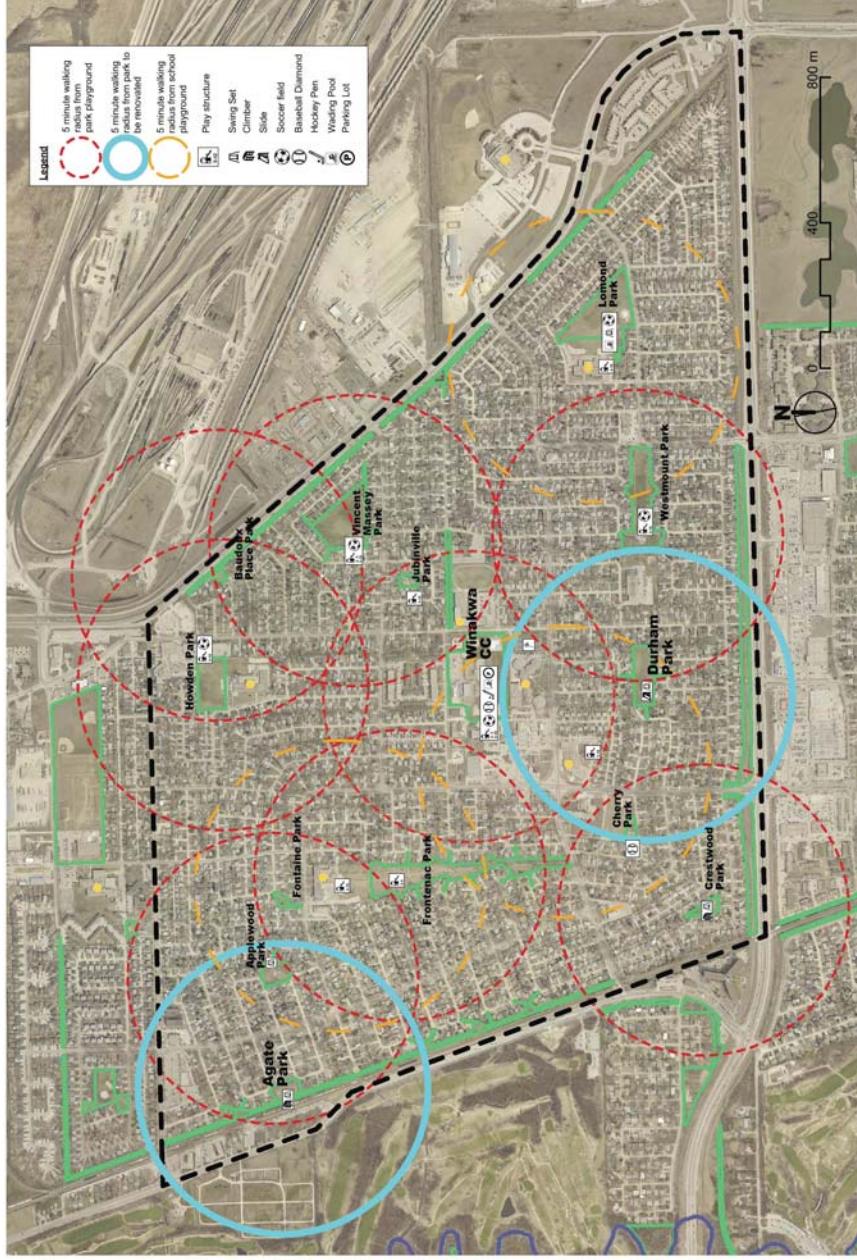


3



Appendix D - Pin board and results

Windsor Park Neighbourhood Parks Redevelopment



The Windsor Park neighbourhood has several small neighbourhood parks. Two of these parks, Agate Park and Durham Park (circled in blue), have some of the most aged play equipment in the area and are in need of replacement. There is up to \$210,000 to redevelop Agate Park and Durham Park through the Parks and Recreation Enhancement Program. To add to the diverse recreational needs of users, the City of Winnipeg is working with stakeholders and residents to determine the best way to invest in the future of these two neighbourhood parks.

**What do you value about outdoor amenities in Windsor Park?
What would you improve?**

Place a pin and note on the board.

Use a **green pin** to indicate what you value.

Use a **red pin** to indicate something that could be improved.

Have more to say? Join us at a **public workshop** to discuss park issues and opportunities in greater depth with fellow community members and City staff.

Date: Tuesday, April 24, 2018

Time: 6 p.m. – 8 p.m.

Location: Windsor Park Library, community room, 1195 Archibald St.

RSVP: Register online or call 204-986-4243.

Fill out our online survey at winnipeg.ca/WindsorParkparks

If you require alternate formats or ASL interpretation to participate, please contact 204-986-4243 or email City-Engage@winnipeg.ca.

Appendix E - Workshop workbook



Tuesday, April 24, 2018

6 p.m. to 8 p.m.

Windsor Park Library, community room, 1195 Archibald St.

winnipeg.ca/WindsorParkparks

Agenda

Activity	Details	Duration
Workshop introduction	Introduce format and activities	10 min
Activity 1: Recreation options in area	Group work activity	20 min
Activity 2: Park enhancements	Group work activity Report Back	30 min 10 min
Break (10 min)		
Activity 3: Enhancement ranking	Choose top three enhancements Voting	20 min
Closing remarks and exit survey	Please complete a survey to provide additional feedback	20 min

Instructions

- The workbook you have been provided includes three tasks:
 - Task 1: Discuss and map current recreational opportunities in the area.
 - Task 2: Provide suggestions for new park enhancements in Agate Park and Durham Park.
 - Task 3: Select top enhancements for Agate Park and Durham Park and vote for your favorites.
- Discussions will be facilitated in a group setting. Each group shall identify a recorder and someone to report back.
- The **recorder** will:
 - Record your group's ideas in point form on the maps.
- The **reporter** will:
 - Ensure the group is staying on time to complete all parts of the activity before reporting back.

TASK 1: RECREATION OPTIONS IN AREA (20 min)

Goal: Identify parks and recreational activities available in the area and recreational activities that are missing in the area.

Instructions:

Step 1: As a group, review the *Task 1* map of adjacent parks and current recreational activities available in the area.

Step 2: Discuss which park areas and recreational activities are currently well used and why. Record the main points from the group discussion on the map use the markers provided.

Step 3: Discuss the recreational activities that are missing from the area or that are difficult to access. Record the main points from the group discussion on the map use the markers provided.

Consider the following:

- Which user groups should we be considering when redeveloping parks in this area?
- What amenities should commonly be available within a five minute walking distance?
- Which area parks, if any, are in your opinion overused ?

Notes:

TASK 2: PARK ENHANCEMENTS (30 min)

Goal: As a group, discuss current values and use of Agate Park and Durham Park. Provide suggestions for new park enhancements, keeping in mind what is and isn't currently available in the area.

Instructions:

Step 1: As a group, reflect on Agate Park as it is right now. Discuss and record on the map what you like about the park. Consider the following:

- What do you usually use the park for?
- What do you want to use the park for?
- What do you like about the way that people are currently using the park?
- What don't you like about this park?

Step 2: Open the *Task 2 Agate Park* package and review the potential park enhancements.

Step 3: Place your group's preferred park enhancements on the map in the location where you would like them to appear. Add notes on the backside of the enhancements explaining your selections. When selecting park enhancements, consider the following:

- What currently is and isn't available in the area?
- What are current issues with the park and how could they be improved?

Step 4: Also provided is blank paper that can be cut into shapes. These can be used to add additional enhancements to the park that were not available in the package provided. Describe the enhancement on the back of the paper and place it on the map.

Step 5: Discuss why you have not placed some of the possible park enhancements on the map. Add notes on the back of these elements and place them back in the envelope.

Step 6: As a group, reflect on Durham Park as it is right now. Discuss and record on the map what you like about the park. Repeat steps 2-5 as they apply to Durham Park.

Notes:

At the end of the task, the project team will photograph your map. Each group will present their map the larger group (10 min).

TASK 3: ENHANCEMENT RANKING AND VOTING (20 min)

Goal: Vote for the park enhancements from all of the groups that you would like to see most.

Instructions:

Step 1: As a group, select the top three enhancements from your Task 2 Agate Park map and write them on the paper provided.

Step 2: As a group, select the top three enhancements from your Task 2 Durham Park map and write them on the paper provided.

Step 3: Walk around the room and review the other groups' top three enhancements on their maps.

Step 4: Each individual will be provided with five blue stickers and five red stickers.

Blue stickers = relate to Agate Park

Red stickers = relate to Durham Park

Vote for your favorite park enhancements by placing one or more stickers next to the enhancements you would like to see in Agate Park and Durham Park.

Notes:

Thank you for participating today!

Appendix F - Workshop boards/submissions

Table 1



Legend

	5 minute walking radius from park playground
	5 minute walking radius from park to be renovated
	5 minute walking radius from school playground
	Play structure
	Swing Set
	Climber
	Slide
	Soccer field
	Baseball Diamond
	Hockey Pen
	Wading Pool
	Parking Lot



Windsor Park Parks

Scale: 1:6000

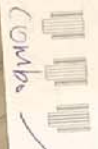
- activities for adults
 - dogs
 - winter activities
 - paths
- fewer kids?*



LIGHT STANDARD
2 PLANTERS
BOLLARD FENCE

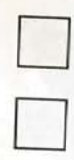


Park Sign
- \$2,000 each



Picnic Table - \$1,500 each

Bench - \$1,500 each



Sandbox - \$1,500 each



Bollard Fence \$1,500/10 bollards



Swing Set - \$20,000



Play Structure - \$50,000+

Granular Pathway (1.8 m / 6' wide) - \$6,000 per 50 m length

ARGONNE
BAY

AGATE BAY



Agate Park

Scale: 1:200



Light

Granular Pathway (1.8 m / 6' wide) - \$6,000 per 50 m length

Park Sign each
\$3,000

Bench - \$1,500 each

PATHWAY

Swing S

Sandbox - \$1,500 each

PLAYGROUND

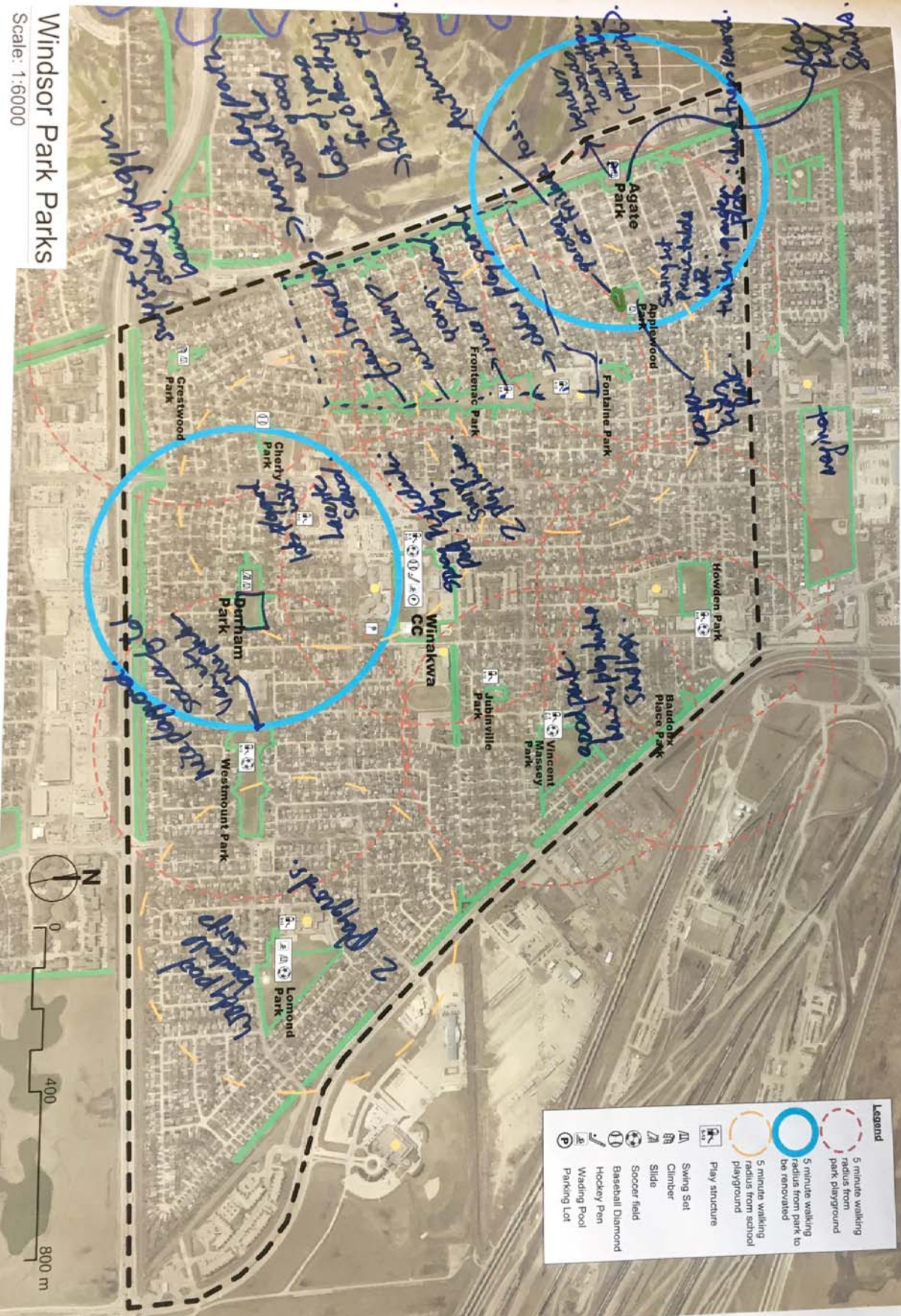


Durham Park
Scale: 1:200

Table 2

Windsor Park Parks

Scale: 1:6000



- lot of parks, but not maintained.
- not attractive.
- doesn't attract use.
- Durham Park decisions. 1st bit of Summer.
- W/In 5 min → Somewhere to sit & linger.
- more playgrounds.

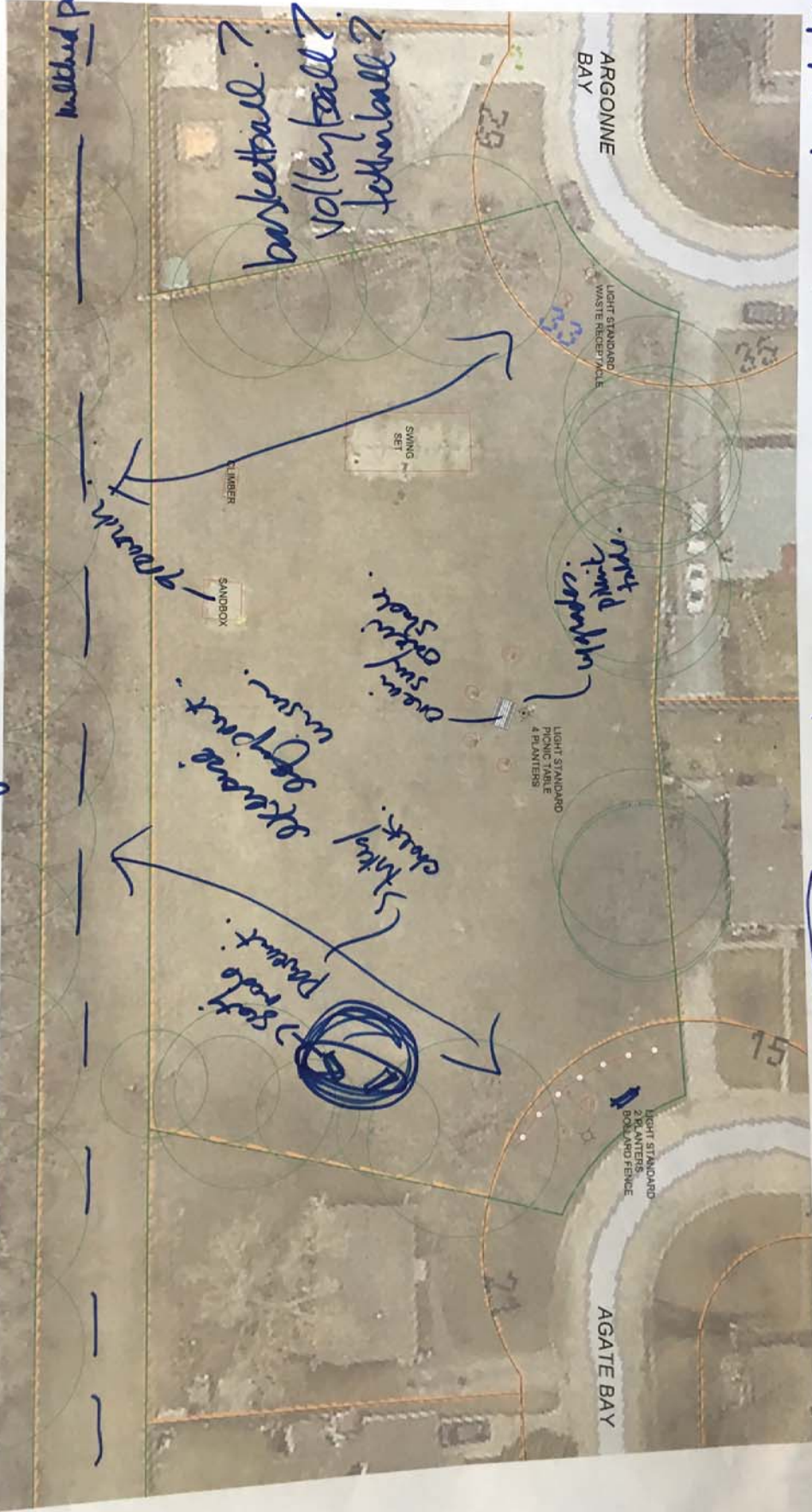
- skatepark?
- volleyball court.
- basketball.

Agate Park
 Scale: 1:200



sidewalk

*walkway
 cross country
 ski trails
 - not fair*



*Remove top of soccer field.
 - chairs in pits.*

*... park
 - water pump*

*Multi-purposed for
 - basketball court
 - basketball
 - volleyball
 - teetherball*

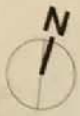
Table 3



Durham Park
Scale: 1:200

Agate Park

Scale: 1:200



- upgrade walking path (along train track)
- clear in winter for dog walking.

Table 4



Windsor Park Neighbourhoods Parks Redevelopment



Durham Park
Scale: 1:200



Appendix G - Online survey and results

Q1 What amenities would you like to see added to the Windsor Park neighbourhood?

Answered: 71 Skipped: 12

#	RESPONSES	DATE
1	Easier access to recreation and parks. More greenspace and natural (non-concrete) running/walking paths.	5/25/2018 7:19 PM
2	Actually it would be beneficial to have a comprehensive master plan for the neighbourhood to provide a framework and strategy for future development of any kind. Such a plan would consider public space amenities in a broader context.	5/2/2018 6:31 AM
3	new playground structures, improved pathways, benches, picnic tables	5/1/2018 8:19 AM
4	NAture trail. Small climbing wall. Swings. Spinning feature.	4/30/2018 10:01 PM
5	Swings and playground for kids	4/30/2018 9:34 PM
6	Play structure for younger ages 1-4. More benches and garbages at park entrances. Updated splash park Stretching or outdoor workout equipment for adults beside walking/jogging paths Fence at Agate park and updated swings	4/30/2018 9:22 PM
7	new climbing structures	4/30/2018 7:06 PM
8	Toboggan run, nature/outdoor exploration park (features like Assiniboine park).	4/30/2018 4:03 PM
9	Fenced play area for children, a play structure for children 2-12, as well as an updated swing set and more walking trails, trees, benches.	4/30/2018 3:41 PM
10	Updated play equipment for kids. My children go to the daycare nearby and Agate is the closest park with terrible amenities for children. I also live inWP, and its a very fast changing place with lots of young families putting in roots here. I feel like the parks need to reflect the new wave of families. More family oriented things.	4/30/2018 3:17 PM
11	Swings, play structure, sand box, benches	4/30/2018 3:14 PM
12	Large climbing structure, swing set, slides and jungle gym and water pad.	4/30/2018 3:08 PM
13	Fenced in playground. Up to date swing set and play structure for 2-12 yr olds	4/30/2018 3:06 PM
14	Durham park is not an offleashe park for dogs. Maybe at the east end, could have a fenced offleashe / on leashe area. Since no one follows the rules and lets their dog run free.	4/30/2018 1:08 PM
15	Walking trails, trees, benches, play structures	4/30/2018 11:51 AM
16	New play equipement for children ages 2-12 - slides, monkey bars, swings, accessible equipement for kids,sandboxes walking trails, benches and trees closer to the playgrounds.	4/29/2018 7:34 PM
17	More playgrounds for toddlers; more walking paths; splash pad	4/29/2018 12:16 PM
18	A fence, a play structure for children 2-12, as well as an updated swing set. More walking trails, trees, and benches.	4/29/2018 11:55 AM
19	Children play equipment	4/29/2018 8:07 AM
20	Fence Playstructure for small kids Swings updated & appropriate for toddlers and older children	4/28/2018 9:25 PM
21	Fence for Agate Park	4/28/2018 8:23 PM
22	the first priority is the fence to keep little ones safe from roads, the second is big updated swing set for as much kids as possible and various slides, the third is trees	4/28/2018 8:09 PM
23	Crosswalk with lights to cross by agate park	4/28/2018 2:58 PM
24	For Agate Park New swing set Updated play structure More trees and walking paths Flowers	4/28/2018 2:42 PM
25	Updates to the parks that are very out dated. More trees and no removal of existing green space.	4/28/2018 1:22 PM
26	Splash pads	4/26/2018 11:39 AM

Windsor Park Neighbourhood Parks Redevelopment

27	Splash pad Updated play ground with multi. Slides , bridges , great for all ages of 3 to 14. So kids want to go out and play , kids are too bored these days with being simple play ground	4/26/2018 9:32 AM
28	Splash pad. Nature playground. Upgraded playgrounds	4/25/2018 8:37 PM
29	Parks for all ages from preschool, school age, teenagers to adults	4/25/2018 12:53 PM
30	Swings in fontaine park. Why were they removed	4/25/2018 10:59 AM
31	More toddler friendly parks and equipment, special needs accommodations as well!	4/24/2018 5:17 PM
32	Climbing wall/ninja warrior like structures and balance obstacle, rebound nets, skate board park.....activity types for middle aged kids ages 8-11	4/24/2018 4:44 PM
33	handicapped accessible park.	4/23/2018 8:28 PM
34	Update Durham Park. Outdoor Ice rink and or tabogan run.	4/23/2018 7:43 PM
35	Shelter/seating near playgrounds	4/23/2018 9:07 AM
36	More equipment/updated equipment at Howden park. Plus, proper landscaping and drainage at Howden park.	4/21/2018 10:21 PM
37	Gardens with Indigenous plants to support pollinators	4/21/2018 3:48 PM
38	I'm of the strong opinion that road repair should come before parks. I live on Agate Bay and only know of two children on my stretch of the bay. Drake is in such poor condition as well as many other road ways with in Windsor Park.	4/21/2018 2:17 PM
39	We need to start thinking more about the environment and our pollinators, so I would like to see patches of native wildflowers and grasses to support biodiversity. The best part is that native plants and grasses don't need maintenance because they've evolved to thrive in the area. This land was once covered with native grasses and flowers, but non-native lawns have taken over. Ultimately, I would love to see each park have a monarch way station. And it would be relatively inexpensive to do so. Park benches near the patches would be lovely too. I'm pretty sure it would be great for publicity as well. Here is the waystation information. I'm pretty sure it would be great for publicity as well. Here is the way station information. https://www.monarchwatch.org/waystations/	4/20/2018 10:37 AM
40	I would like a new updated play structure added to the Durham park . It also needs benches to sit on. Many children use this park and it has dated and unsafe play equipment.	4/19/2018 4:36 PM
41	Slides climbing structure graded ground around all structures to allow water run off.	4/19/2018 10:27 AM
42	Dog park	4/17/2018 7:44 PM
43	A splash park with shallow pool.	4/17/2018 12:46 PM
44	Age appropriate equipment. A structure for younger and a structure for older kids 6+ Teeter totter / sandbox Kildonan Place Park structure is fantastic and great for all ages. Maybe a smaller version. Ecole Lacerte also has a few nice structures.	4/17/2018 8:52 AM
45	Any time of newer play structure would be appreciated. It is a huge open field(Durham park) so soccer goals or something that would utilize the entire park. A winter slide would be an amazing addition.	4/16/2018 6:28 PM
46	A clean dry synthetic turf field	4/16/2018 1:03 PM
47	Splash pad with a slide. Good play structure for both little ones and big ones.(not dangerous to the younger ones)	4/16/2018 11:13 AM
48	New improved play structures / park benches	4/16/2018 9:18 AM
49	Splash Pad	4/16/2018 1:32 AM
50	Nature playground; new play structure; skateboard park; dog friendly areas (enclosed area); better lighting	4/15/2018 7:14 PM
51	Splash pad/park	4/15/2018 3:39 PM
52	Decent restaurants and grocery stores.	4/15/2018 2:42 PM
53	Splash park (agate) or skate/bike park (Durham). Toddler friendly equipment, community flower and vegetable gardens. Climbing walls.	4/15/2018 11:26 AM
54	Swings, benches, picnic tables	4/15/2018 1:14 AM

Windsor Park Neighbourhood Parks Redevelopment

55	I would love to see a nice splash pad and many of the playground equipment is outdated. I live on Fontaine crescent and we had a small park with a swing set. It was removed in 2017, but not replaced. I wish it could be replaced.	4/14/2018 6:51 PM
56	play structure, soccer nets, boards for skating rink in winter	4/14/2018 4:45 PM
57	More kid friendly play structures, swings, soccer nets, possibly even a splash pad For Durham Park	4/14/2018 4:45 PM
58	Picnic tables covered by a canopy	4/14/2018 4:29 PM
59	Benches and picnic tables	4/14/2018 4:03 PM
60	A splash pad!	4/14/2018 3:56 PM
61	Something for pre teens. Skate park	4/14/2018 3:53 PM
62	play structures, small climbing walls, slides, swings,	4/13/2018 3:25 PM
63	A skate park in an appropriate location would work well. Many non-pubic sites are being used for this purpose currently.	4/13/2018 9:47 AM
64	Swings and slides.	4/13/2018 7:54 AM
65	New, modern play structures	4/13/2018 6:38 AM
66	Splash pad, safer playground equipment for younger children/toddlers	4/12/2018 9:43 PM
67	a new playground at agate park to replace old play equipment	4/12/2018 4:08 PM
68	Splash pad Nature Playground	4/12/2018 3:17 PM
69	More play equipment for kids	4/12/2018 1:12 PM
70	Skateboard park, dog park.	4/12/2018 12:41 PM
71	would love to see a bike park and maybe a Parkour place appropriate for early teens. Maybe a splash area. Sledding for the winter	4/12/2018 12:11 PM

Q2 What outdoor activities would you not like to see added to the Windsor Park neighbourhood?

Answered: 45 Skipped: 38

#	RESPONSES	DATE
1	I don't want to see children playing on the streets... they should be in a park away from traffic and concrete.	5/25/2018 7:19 PM
2	nothing I can think of	5/1/2018 8:19 AM
3	Play structure for only 5-12.	4/30/2018 9:22 PM
4	Smoking and drinking.	4/30/2018 3:41 PM
5	Adult equipment. You go for a walk and all you see is families.	4/30/2018 3:17 PM
6	Tennis courts	4/30/2018 3:08 PM
7	A new play area for durham park. The ones here are old and dangerous	4/30/2018 1:08 PM
8	Sandbox	4/30/2018 11:51 AM
9	Adult fitness equipment. Windsor park is up and coming with lots of young families moving in and starting small families. There are lots of gyms nearby. I want to see more things for us young families to go to. On our street alone in 5 years most of the elderly population moved out and young families moved in. We now have 18 kids on our street in 5 years.	4/29/2018 7:34 PM
10	Skate park	4/29/2018 12:16 PM
11	Dog leash activities/park	4/29/2018 8:07 AM
12	Just want it to be toddler friendly	4/28/2018 9:25 PM
13	Bike lanes	4/28/2018 8:23 PM
14	I'm open to having many activities available	4/28/2018 2:42 PM
15	fence, a play structure for children 2-12, as well as an updated swing set. Outside of those 3 top priorities more walking trails, trees, benches	4/28/2018 2:38 PM
16	I don't that we need to have more skating rinks and I don't there is a need to take away of the existing green spaces as in formal concrete structures	4/28/2018 1:22 PM
17	n/a	4/26/2018 11:39 AM
18	Something simple, that only could keep very young kids entertained for a little bit of time.	4/26/2018 9:32 AM
19	Skate park. Tennis courts.	4/25/2018 8:37 PM
20	Nothing comes to mind	4/24/2018 5:17 PM
21	No more wading pools or soccer fields.	4/24/2018 4:44 PM
22	winter slides	4/23/2018 8:28 PM
23	I'm not sure it's the best allocation of community money to fix up Agate park when it's located on the edge of the community and only serves half of the radius that it reaches.	4/23/2018 9:07 AM
24	If the park is close to houses, basketball courts should be a no-no. The bouncing of the ball within ~50 - ~75 feet of a house is surprisingly loud and incredibly annoying.	4/20/2018 10:37 AM
25	Sand boxes they just become litter boxes.	4/19/2018 10:27 AM
26	?	4/17/2018 7:44 PM
27	Baseball diamonds, we have may all within blocks of each other	4/16/2018 6:28 PM
28	Sand boxes.	4/16/2018 11:13 AM
29	Boulders	4/15/2018 7:14 PM

Windsor Park Neighbourhood Parks Redevelopment

30	Green space is nice. This is an aging community, I think we should be looking at catering more to this community	4/15/2018 2:42 PM
31	N/A	4/15/2018 11:26 AM
32	Sandbox	4/15/2018 1:14 AM
33	Off leash dog park, bike trails. I think we have plenty of trails nearby.	4/14/2018 6:51 PM
34	? nothing comes to mind	4/14/2018 4:45 PM
35	N/a	4/14/2018 4:45 PM
36	No idea	4/14/2018 3:53 PM
37	skateboard park	4/13/2018 3:25 PM
38	Pay-for-use facilities	4/13/2018 9:47 AM
39	Expensive equipment that won't be used.	4/13/2018 7:54 AM
40	???	4/13/2018 6:38 AM
41	no more round planters	4/12/2018 4:08 PM
42	None - anything that the community can use is great	4/12/2018 3:17 PM
43	Sand box	4/12/2018 1:12 PM
44	Play structures, they are not used it seems.	4/12/2018 12:41 PM
45	splash areas to cool off in the summer. sledding in the winter. Overall newer structures and maybe an orchard.	4/12/2018 12:11 PM

Q3 Are there specific locations outside of Agate Park and Durham Park where you would like to see changes?

Answered: 48 Skipped: 35

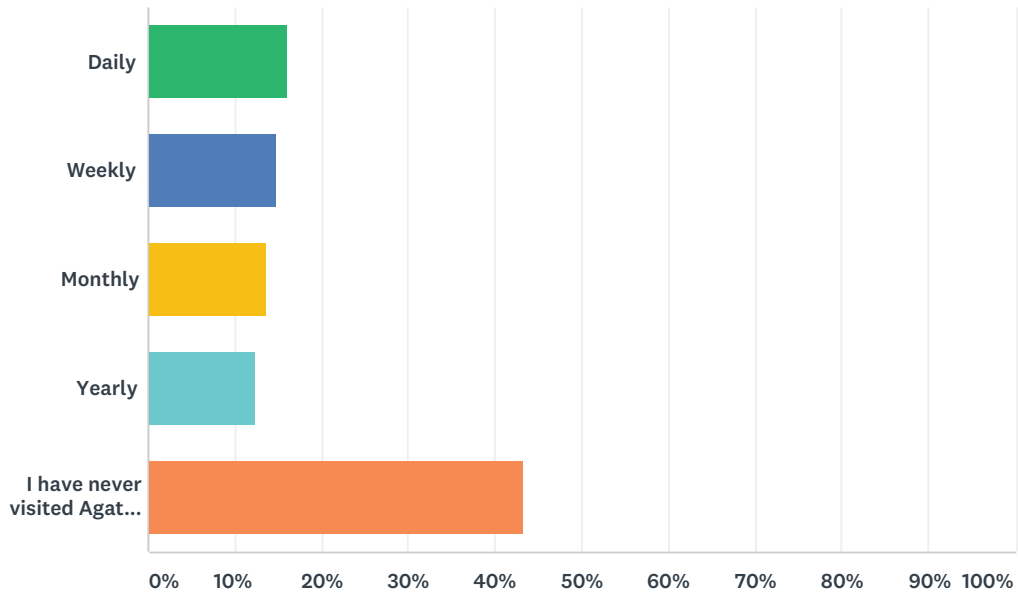
#	RESPONSES	DATE
1	I would like to know what the plans are for the old library given its great location at the heart of our community.	5/2/2018 6:31 AM
2	no	5/1/2018 8:19 AM
3	Please reinstall the swing set at Fontaine Park. That swing set was demolished last year. My kids are so upset about that. We missed our swings at Fontaine Park. Please bring them back!	4/30/2018 9:45 PM
4	Please put the swings back in Fontain Park. Swings and sandbox were dismantled last year. This park in on the way to/from school for many kids!	4/30/2018 9:34 PM
5	More garbages at Vincent Massey park. Better lighting at dusk at Vincent Massey and jubinville	4/30/2018 9:22 PM
6	Applewood park - small play structure with a slide. Remove the sandbox at Applewood park - it is just a giant cat litter box.	4/30/2018 8:39 PM
7	Applewood Park - small play structure needed (slide).	4/30/2018 4:03 PM
8	No.	4/30/2018 3:41 PM
9	No	4/30/2018 3:17 PM
10	No	4/30/2018 3:08 PM
11	No .	4/30/2018 1:08 PM
12	No, Agate has absolutely nothing for kids, it really needs to be updated. Tons of kids in the area with lots of home daycares. Also there is low income housing near by and they really have nothing. It needs to be a park for the families and for our community. There is nothing in that corner of Windsor Park.	4/29/2018 7:34 PM
13	Maginot field	4/29/2018 12:16 PM
14	No comment	4/28/2018 2:42 PM
15	My focus is on Agate Park and making the path to it safer to get too.	4/28/2018 1:22 PM
16	Splash pad at Lamond Park	4/26/2018 11:39 AM
17	Southdale , no idea where parks are that arnt close to water, I go to Windsor area for parks. I feel open water should be fenced in , right at the school is a elementary near open water. And I know that is something to bond to happen. Kids are very interested in water.	4/26/2018 9:32 AM
18	Upgrade the wading pool by general vanier to a splash pad.	4/25/2018 8:37 PM
19	just more maintenance of all the foot paths. Overgrown trees on the paths. To the grass in the parks mowed more often instead of letting them get to high an uninviting	4/25/2018 12:53 PM
20	Yes Fontaine Park has been stripped clean last year	4/25/2018 10:59 AM
21	Not sure if it's part of the townhouses but behind Windsor Park convenience could use an upgrade!	4/24/2018 5:17 PM
22	both parks need major upgrade of play structures and swings for children with disabilities as other are parks have. Durham is a HUGE park with plenty of room for soccer or football goal posts. This would make it more usable for all ages. Pea gravel is difficult to get a wheel chair or wagon through. Handicapped swings are not very useful if you cannot get the child to them. Play structure with a ramp to allow children to experience play with others are available. We see many children in wheelchairs in the area. How wonderful to have a friendlier park for them. Slides, of course slides for various ages.	4/23/2018 8:28 PM
23	Howden park	4/21/2018 10:21 PM

Windsor Park Neighbourhood Parks Redevelopment

24	Yes, as mentioned in #1, I think we need to think about biodiversity and the environment and put in dedicated native flower and grass beds, with park benches nearby. If we could make them all into monarch waystations, that would be even better. Again, it would likely be inexpensive and make for some brilliant publicity, and set a great example for other areas of the city. The Roi would be fantastic!!!	4/20/2018 10:37 AM
25	The old library site could be used as a gathering place for teens or seniors.. Spears road could use some beautifying. Also more bike paths would be very nice.	4/19/2018 4:36 PM
26	Start with these. Don't try to do the whole community with small funds.	4/19/2018 10:27 AM
27	General Vanier: parts of field outside of soccer pitch are in poor condition with holes and dips.	4/17/2018 7:44 PM
28	Upgrade the candy cane splash pad.	4/17/2018 12:46 PM
29	Westmount Park	4/17/2018 8:52 AM
30	A lot of the other parks have seen updates and or have way more equipment then these.	4/16/2018 6:28 PM
31	no	4/16/2018 9:18 AM
32	Paths need upgrading as they are cracking	4/15/2018 7:14 PM
33	Lomond park. We live on Penfold Crescent. The field around the soccer pitch is very uneven and hard for kids to run around in, so filling in some spots would be great. Would be nice to add a splash feature to the wading pool and even a play structure close to swing.	4/15/2018 3:39 PM
34	I can't think of any at this time	4/15/2018 2:42 PM
35	Windsor Park pool needs a makeover.	4/15/2018 11:26 AM
36	Just what I mentioned before. I would love to have the swings back at the Fontaine crescent park	4/14/2018 6:51 PM
37	no	4/14/2018 4:45 PM
38	Nope we live less than 5 minute walk from Durham Park	4/14/2018 4:45 PM
39	More benches to sit on. Any park in Windsor Park.	4/14/2018 4:03 PM
40	Fixed streets. Windsor park is starting to look pretty beat up	4/14/2018 3:53 PM
41	cherry park, crestwood park, westmount park, just upgrades, maintenance	4/13/2018 3:25 PM
42	Frontenac park	4/13/2018 7:54 AM
43	Pathways into the park rejuvenated. They have not been touched since we moved into the area in 1980.	4/13/2018 6:38 AM
44	Westmount park- fix the drain in the parking lot so it isn't a giant puddle/ice rink in the winter/spring. Can't walk there with a stroller	4/12/2018 9:43 PM
45	all the old playground equipment updated	4/12/2018 4:08 PM
46	If a splashpad can't be done at Algate or Durham, at the community centre it would be great.	4/12/2018 3:17 PM
47	Westmount park is great and well used, I would like to see money going there as Durham many do not know about it.	4/12/2018 12:41 PM
48	overall newer structures suited for pre-teens.	4/12/2018 12:11 PM

Q4 How often do you visit Agate Park?

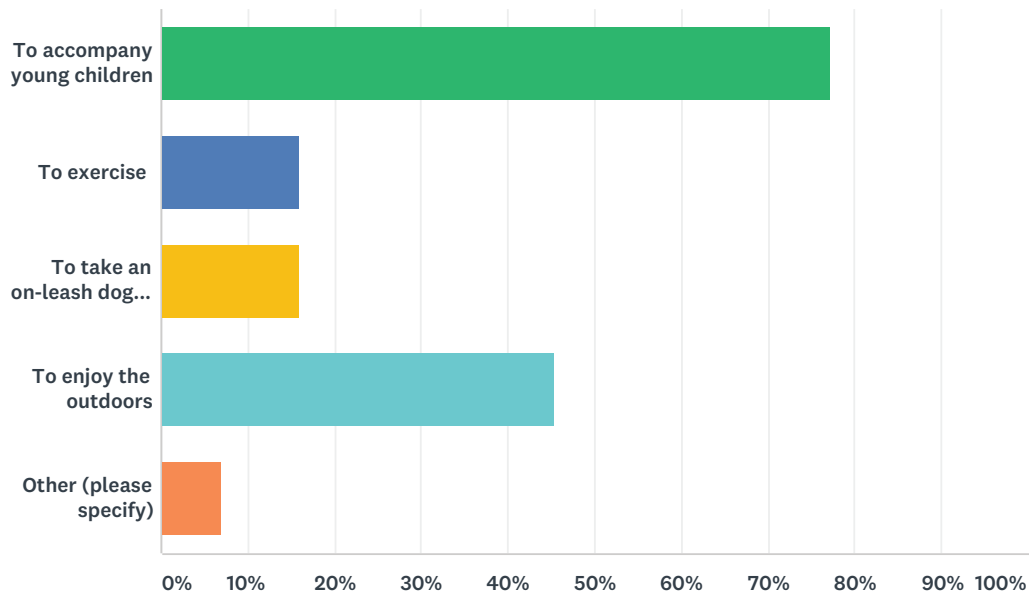
Answered: 81 Skipped: 2



ANSWER CHOICES	RESPONSES	
Daily	16.05%	13
Weekly	14.81%	12
Monthly	13.58%	11
Yearly	12.35%	10
I have never visited Agate Park	43.21%	35
TOTAL		81

Q5 What best describes the reason you visit Agate Park ? (check all that apply)

Answered: 44 Skipped: 39

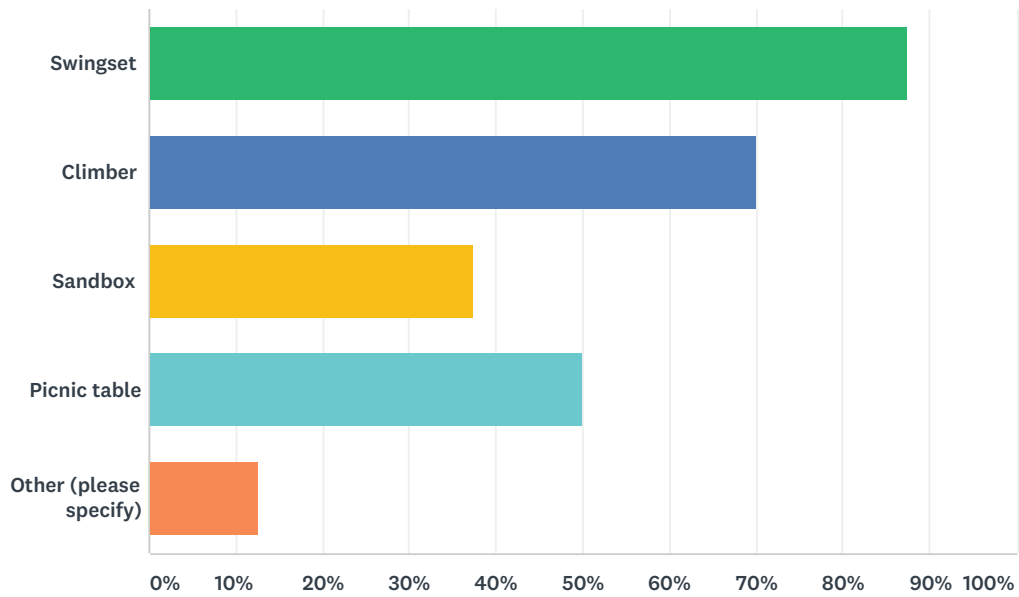


ANSWER CHOICES	RESPONSES
To accompany young children	77.27% 34
To exercise	15.91% 7
To take an on-leash dog for a walk	15.91% 7
To enjoy the outdoors	45.45% 20
Other (please specify)	6.82% 3
Total Respondents: 44	

#	OTHER (PLEASE SPECIFY)	DATE
1	Passing through on a run/walk.	4/30/2018 8:51 PM
2	My children attends alot with their daycare	4/30/2018 3:18 PM
3	wide open space for free play and picnics!	4/28/2018 1:27 PM

Q6 What park equipment do you use when visiting Agate Park? (check all that apply)

Answered: 40 Skipped: 43



ANSWER CHOICES	RESPONSES
Swingset	87.50% 35
Climber	70.00% 28
Sandbox	37.50% 15
Picnic table	50.00% 20
Other (please specify)	12.50% 5
Total Respondents: 40	

#	OTHER (PLEASE SPECIFY)	DATE
1	Passing through	4/28/2018 9:31 PM
2	slides	4/28/2018 8:15 PM
3	Garbage - recycling??	4/28/2018 3:00 PM
4	a fence, more trees, mixed of benches and picnic tables	4/28/2018 1:27 PM
5	Greenspace	4/15/2018 1:16 AM

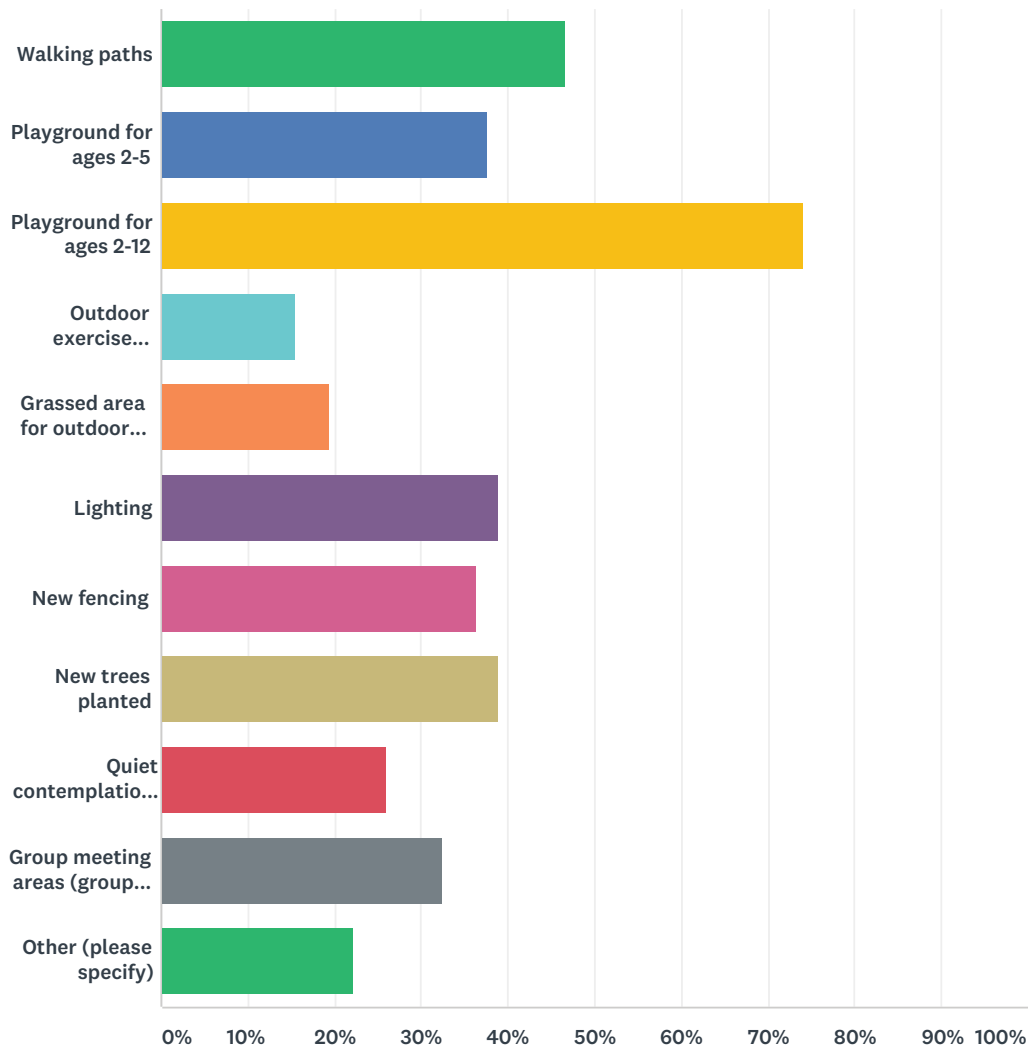
Q7 Are there any park issues that need to be addressed at Agate Park?

Answered: 28 Skipped: 55

#	RESPONSES	DATE
1	- better fencing to protect children from train tracks - pathways would be nice	5/1/2018 8:21 AM
2	No	4/30/2018 9:47 PM
3	Play structure is old and not safe	4/30/2018 9:37 PM
4	Updated swing set Play structure for 2-5 Fence around park	4/30/2018 9:25 PM
5	There isn't anything there to make it worth visiting except an old swing set.	4/30/2018 8:51 PM
6	The fence and everything else (outdated)	4/30/2018 3:18 PM
7	The park needs a fence.	4/30/2018 3:17 PM
8	Cleanliness, grass being cared for	4/30/2018 3:09 PM
9	The equipment is old, outdated, better fencing. Just needs to be more accessible and revived for kids to use. There are 2 roads and the railway close by so a safety concern.	4/29/2018 7:36 PM
10	Waste cleanup	4/29/2018 12:18 PM
11	More trees, landscaping	4/29/2018 8:08 AM
12	It needs a fence to keep kids safe.	4/28/2018 8:25 PM
13	it should be well fenced to provide more safety for the youngest ones	4/28/2018 8:15 PM
14	Yes	4/28/2018 3:00 PM
15	Some of the play equipment is very old. New swing set and play structure would be great!	4/28/2018 2:44 PM
16	A fence	4/28/2018 2:39 PM
17	It need to be kept up! our children really love playing there, so a fence and a safe path are very important	4/28/2018 1:27 PM
18	Not enough entertainment for kids	4/26/2018 9:40 AM
19	just become more modern	4/25/2018 12:55 PM
20	No it's just boring lol	4/24/2018 5:19 PM
21	Dog waste pick up	4/21/2018 2:21 PM
22	Lighting - safety	4/15/2018 7:15 PM
23	Lighting, terrain is uneven, the équipement is outdated.	4/15/2018 11:28 AM
24	The ground is uneven and needs some leveling.	4/15/2018 1:16 AM
25	The equipment is dated and needs updating	4/14/2018 6:52 PM
26	trim the bushes by the railway tracks	4/14/2018 4:05 PM
27	better playground	4/12/2018 4:10 PM
28	It's dark	4/12/2018 1:12 PM

Q8 What type of amenities would you like to see added or enhanced in Agate park? Please select your top three.

Answered: 77 Skipped: 6



ANSWER CHOICES	RESPONSES	
Walking paths	46.75%	36
Playground for ages 2-5	37.66%	29
Playground for ages 2-12	74.03%	57
Outdoor exercise equipment	15.58%	12
Grassed area for outdoor sport	19.48%	15
Lighting	38.96%	30
New fencing	36.36%	28
New trees planted	38.96%	30
Quiet contemplation/reading areas (single benches)	25.97%	20

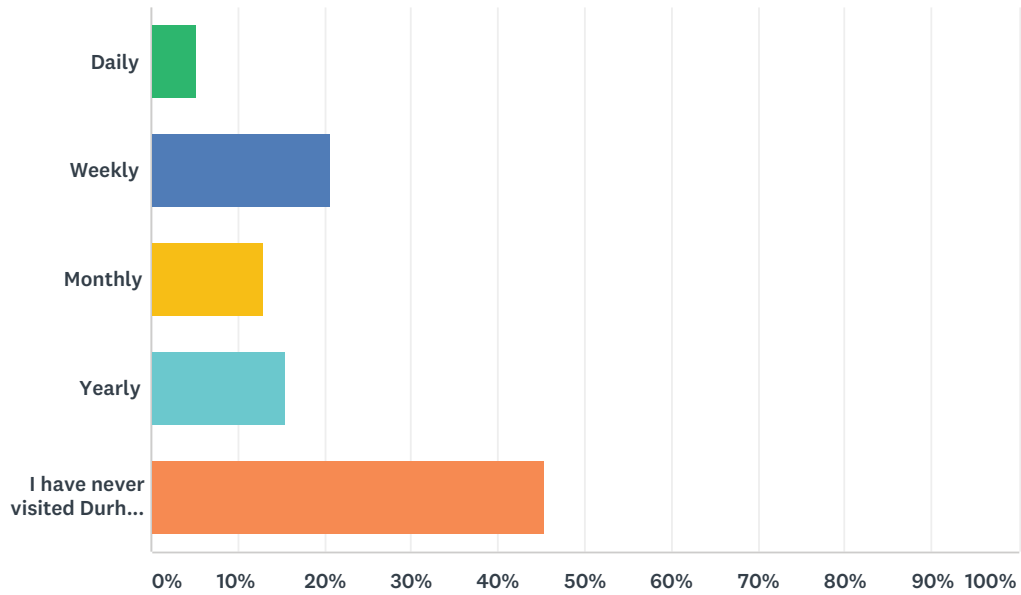
Windsor Park Neighbourhood Parks Redevelopment

Group meeting areas (groups of benches/picnic tables)	32.47%	25
Other (please specify)	22.08%	17
Total Respondents: 77		

#	OTHER (PLEASE SPECIFY)	DATE
1	No other things just trees why do I have to pick three? It is not big enough for walking paths and a lot of equipment that then has to be maintained - is there anything wrong with just wanting green space, parks with trees	5/2/2018 6:35 AM
2	Updated swing set.	4/30/2018 8:51 PM
3	Recycling and safety lights and crosswalk when crossing Elizabeth	4/28/2018 3:00 PM
4	revamp sand box or upgraded swing set	4/28/2018 1:27 PM
5	splash pad	4/26/2018 11:40 AM
6	Unknown	4/23/2018 7:44 PM
7	Gardens with indigenous plants for pollinators	4/21/2018 3:49 PM
8	I only selected these items because it would not let me proceed with out making 3 selections	4/21/2018 2:21 PM
9	Native grass and wildflower areas (in combination with the quiet contemplation/reading areas mentioned above). Monarch way stations, preferably.	4/20/2018 10:39 AM
10	As I do not know this park I cannot really comment.	4/19/2018 4:38 PM
11	Bench for parents to sit and watch their kids play.	4/19/2018 10:32 AM
12	No comment. Unlikely we would visit unless there was a feature unique to Windsor Park area.	4/16/2018 1:35 AM
13	I have never visited this park, so hard to choose.	4/15/2018 3:42 PM
14	A lot of people who live in WP have lived here since it was built, please keep them in mind. Maybe lawn bowling, shuffle board	4/15/2018 2:47 PM
15	Splash pad	4/15/2018 11:28 AM
16	Family oriented	4/14/2018 4:46 PM
17	I didn't even know that was a park	4/14/2018 3:58 PM

Q9 How often do you visit Durham Park?

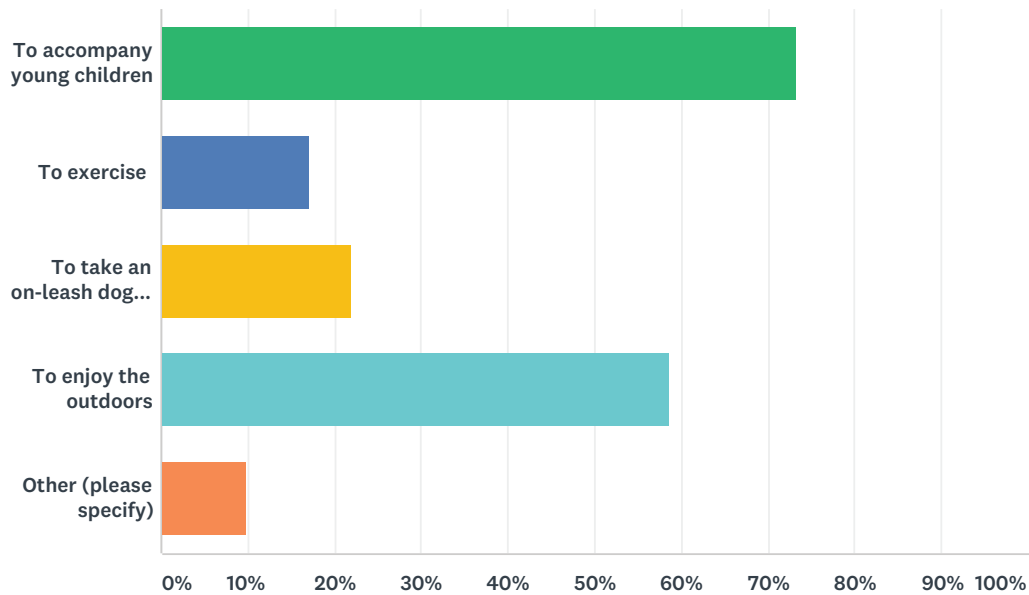
Answered: 77 Skipped: 6



ANSWER CHOICES	RESPONSES	
Daily	5.19%	4
Weekly	20.78%	16
Monthly	12.99%	10
Yearly	15.58%	12
I have never visited Durham Park	45.45%	35
TOTAL		77

Q10 What best describes the reason you visit Durham Park ? (check all that apply)

Answered: 41 Skipped: 42

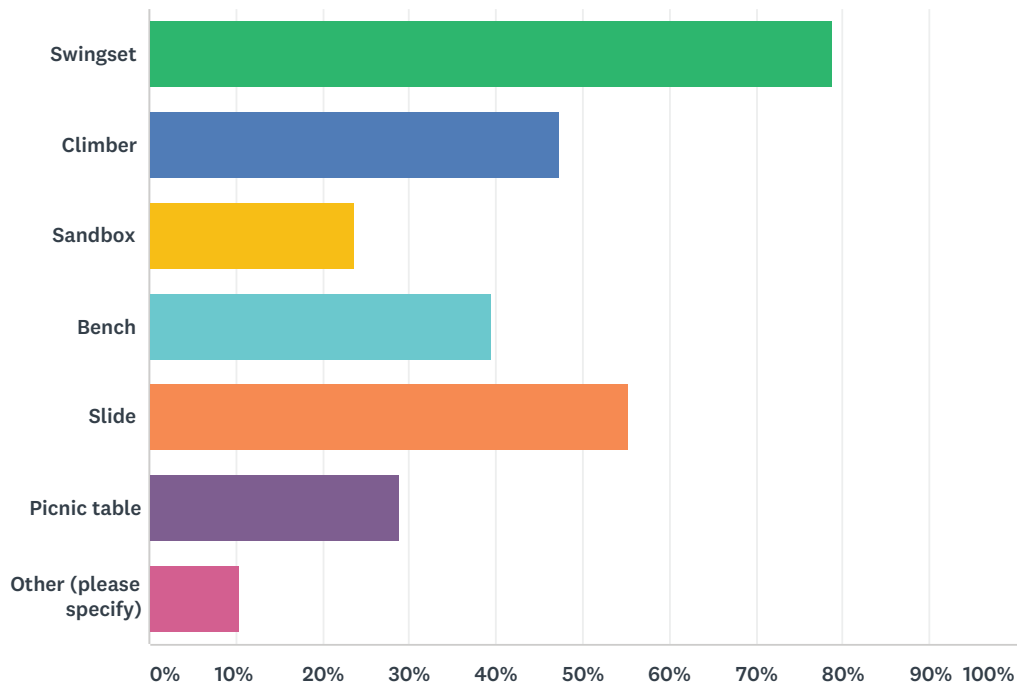


ANSWER CHOICES	RESPONSES
To accompany young children	73.17% 30
To exercise	17.07% 7
To take an on-leash dog for a walk	21.95% 9
To enjoy the outdoors	58.54% 24
Other (please specify)	9.76% 4
Total Respondents: 41	

#	OTHER (PLEASE SPECIFY)	DATE
1	My home backs onto the park so I use it to connect to places in my neighbourhood	5/2/2018 6:40 AM
2	Z	4/30/2018 9:28 PM
3	Cycling/walking around neighbourhood	4/16/2018 1:38 AM
4	Used to live in the area. Now sometimes bring my kids there.	4/13/2018 6:40 AM

Q11 What park equipment do you use when visiting Durham Park? (check all that apply)

Answered: 38 Skipped: 45



ANSWER CHOICES	RESPONSES	
Swingset	78.95%	30
Climber	47.37%	18
Sandbox	23.68%	9
Bench	39.47%	15
Slide	55.26%	21
Picnic table	28.95%	11
Other (please specify)	10.53%	4
Total Respondents: 38		

#	OTHER (PLEASE SPECIFY)	DATE
1	We used to use the swings and slide when the kids were young now we use the open space for activities with our extended family	5/2/2018 6:40 AM
2	Park benches and native flower/grass beds.	4/20/2018 10:41 AM
3	There is nothing else there	4/16/2018 6:32 PM
4	I sit on the grass	4/14/2018 4:00 PM

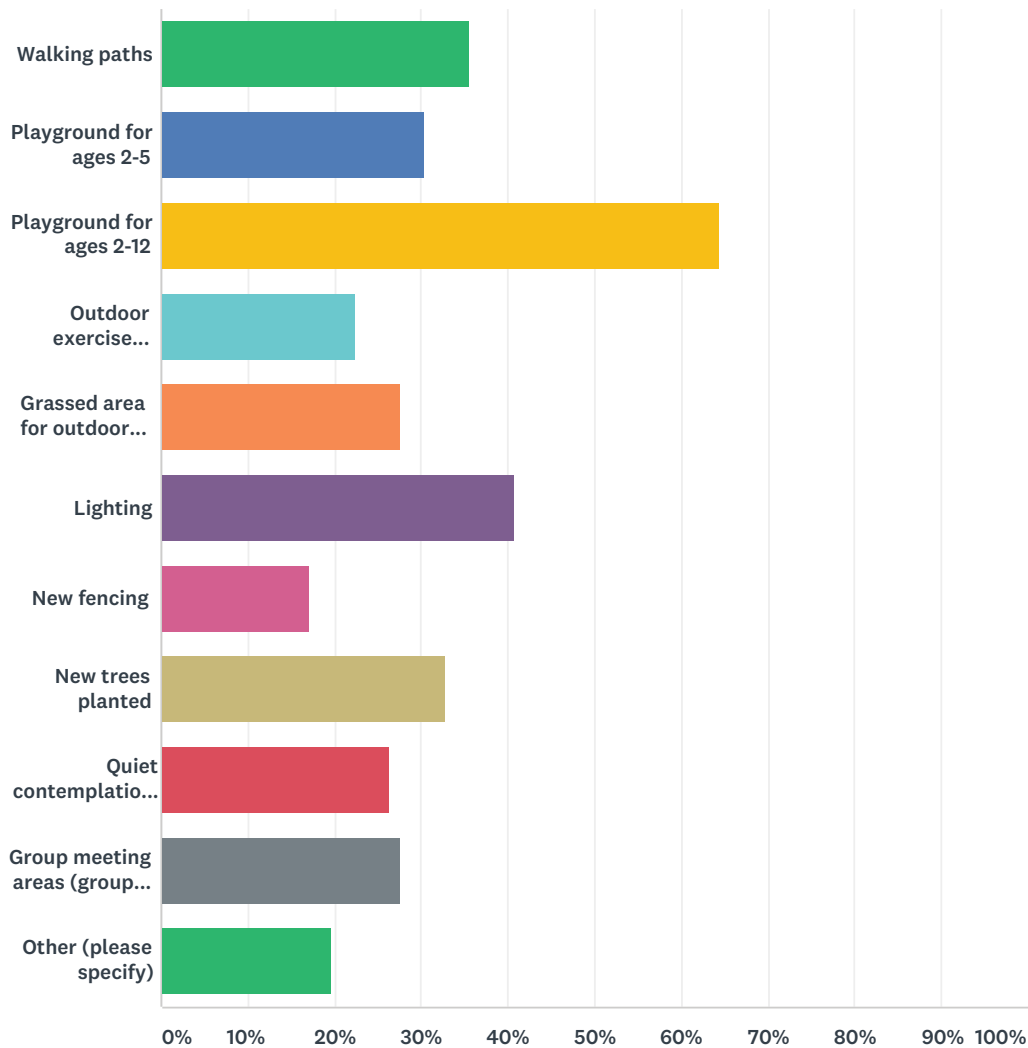
Q12 Are there any park issues that need to be addressed at Durham Park?

Answered: 25 Skipped: 58

#	RESPONSES	DATE
1	Lack of trees	5/2/2018 6:40 AM
2	No fence	4/30/2018 3:18 PM
3	Cleanliness and grass area	4/30/2018 3:10 PM
4	Yes, it is not an off leash park and residents continue to allow their dogs to run at large .	4/30/2018 1:11 PM
5	Lack of play ground , not entertaining enough for kids	4/26/2018 9:46 AM
6	Play equipment needs replacement. Swings are alright, but new slide and climber would be fantastic. It doesn't have any seating - bench or picnic table.	4/25/2018 8:47 PM
7	No	4/24/2018 5:20 PM
8	Enhance it. Make it unique. We have no skate park in the area for kids to ride bmx bikes and skateboards safely.	4/24/2018 4:47 PM
9	YES! Park has old swings and slide. No play structures.No picnic table, no bench. A huge grass park that could be more useful for sports of some kind.	4/23/2018 8:32 PM
10	Everything. The park is not enjoyable for kids and there are many children in this neighborhood	4/23/2018 7:49 PM
11	The dandelions that show up every year	4/21/2018 9:17 PM
12	The play equipment needs replacing. It is dated and unsafe. We do not have benches to sit on.	4/19/2018 4:41 PM
13	The teeter totter needs work. My kids love it.	4/17/2018 8:56 AM
14	The slide is tilted and the climber is ancient and not really worth keeping. A recycle everywhere bin would be great. It is also very dark	4/16/2018 6:32 PM
15	Aged equipment	4/16/2018 1:38 AM
16	Lighting, paths no good	4/15/2018 7:17 PM
17	Equipment needs updating	4/15/2018 11:29 AM
18	Updated equipment. Equipment aimed at older children	4/14/2018 6:54 PM
19	A safer play ground/structure for kids 2-12 with different activities for them	4/14/2018 4:48 PM
20	lighting	4/14/2018 4:47 PM
21	Maybe add something pre teens would enjoy	4/14/2018 4:00 PM
22	This is a well-hidden area great for some uses but also means abused. Needs more frequent oversight to ensure the latter isn't becoming dominant factor.	4/13/2018 9:49 AM
23	Equipment not suitable for young children. Sand not clean, slide / climber not safe	4/12/2018 9:46 PM
24	better playground, swings area is run down, more shade near playground	4/12/2018 4:12 PM
25	newer structures, better lighting, appropriate structures for pre-teens	4/12/2018 12:14 PM

Q13 What type of active amenities would you like to see added or enhanced in Durham Park? (Please select your top three)

Answered: 76 Skipped: 7



ANSWER CHOICES	RESPONSES	
Walking paths	35.53%	27
Playground for ages 2-5	30.26%	23
Playground for ages 2-12	64.47%	49
Outdoor exercise equipment	22.37%	17
Grassed area for outdoor sport	27.63%	21
Lighting	40.79%	31
New fencing	17.11%	13
New trees planted	32.89%	25
Quiet contemplation/reading areas (single benches)	26.32%	20

Windsor Park Neighbourhood Parks Redevelopment

Group meeting areas (groups of benches/picnic tables)	27.63%	21
Other (please specify)	19.74%	15
Total Respondents: 76		

#	OTHER (PLEASE SPECIFY)	DATE
1	Improve north / south path connection across the park	5/2/2018 6:40 AM
2	not sure what's appropriate for this park	5/1/2018 8:22 AM
3	Though I live in Windsor Park I am far enough from Durham Park that I should let other residents vote on what they would like to see there. I don't know the space or how it is used well enough to provide input here. Your question required an answer so there you go.	4/30/2018 8:54 PM
4	None.	4/30/2018 3:42 PM
5	An on leash off leash dog area at east end. Durham park has the room for one	4/30/2018 1:11 PM
6	We do not use Durham Park	4/28/2018 8:16 PM
7	N/a	4/28/2018 3:00 PM
8	splash pad	4/26/2018 11:41 AM
9	Splash pad Play ground multiple slides and tunnels bridges covered areas of the play ground. Outdoor gym Track for rollerblading laps	4/26/2018 9:46 AM
10	2. Skate park 3. Obstacle course	4/24/2018 4:47 PM
11	swing for children with disabilities like other area parks! There is lots of room here. NO sandbox's too many cats loose in area.	4/23/2018 8:32 PM
12	Garden areas with indigenous plants for pollinators	4/21/2018 3:50 PM
13	Native wildflower/grasses area accompanying the park benches mentioned above.	4/20/2018 10:41 AM
14	The same as for Agate.	4/19/2018 10:33 AM
15	Spray pad like island lakes??	4/17/2018 8:56 AM

Q14 Do you have anything else you would like to add?

Answered: 33 Skipped: 50

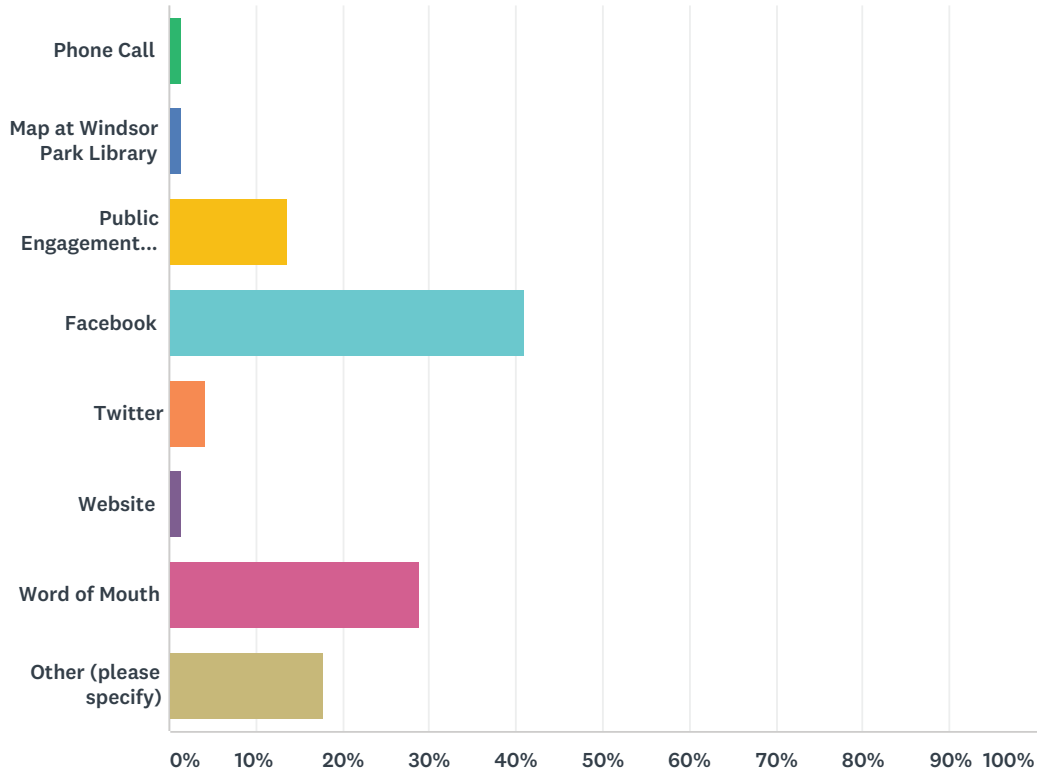
#	RESPONSES	DATE
1	there are a number of daycare's that use agate park on a consistent basis, and there is a turnover of residents with young children in the area so it would be a great benefit to see new play equipment here as what exists now is in bad need of replacement. "build it and they will come"	5/1/2018 8:25 AM
2	Please consider putting swings/slide in Fontaine park	4/30/2018 9:39 PM
3	Our focus is on a fence, a play structure for children 2-12, as well as an updated swing set. Outside of those 3 top priorities more walking trails, trees, benches.	4/30/2018 3:43 PM
4	Agathe really needs to be updated. That side of windsor park really has nothing.	4/30/2018 3:19 PM
5	Again i am tired of seeing residents allowing their dogs running loose in durham park. We have a dog, our yard backs onto durham park and we don't allow him to run frèely in durham park. In fact these people have no consideration for our dog in his fenced in yard. Only one sign is visable. The other one is on someones back fence .	4/30/2018 1:14 PM
6	Really hoping Agate gets the updating it desperately needs. My kids and I would love this to happen, we need a better park that is in walking distance.	4/29/2018 7:38 PM
7	Would love to see more families use the park areas :)	4/29/2018 12:19 PM
8	Very cool that you have set up this survey	4/28/2018 3:00 PM
9	No	4/27/2018 4:36 PM
10	splash pads	4/26/2018 11:42 AM
11	Nope	4/26/2018 9:47 AM
12	Excited to see the upgrades!	4/25/2018 8:47 PM
13	like to see some playgrounds stuff for older kids just not structures maybe a 1/2 basketball court or a form of a skate park	4/25/2018 12:58 PM
14	No	4/25/2018 11:01 AM
15	My son has autism so sensory objects would be very beneficial to him and lots of other children! He loves the rock climbing walls!	4/24/2018 5:21 PM
16	We need some middle grounds for kids into alternative sports.	4/24/2018 4:49 PM
17	Wood chips would be preferred if grass is to be replaces. Accessible parks in Minneapolis have rubber surfaces for children's parks.	4/23/2018 8:33 PM
18	I am a broken record, but if you're interested in learning more about registered monarch way stations, check out the link or give me a shout. My yard is one! https://www.monarchwatch.org/waystations/	4/20/2018 10:42 AM
19	Happy to see this happening.	4/19/2018 10:34 AM
20	I'm so happy that the city has started rejuvenating our parks. We have a young family and use them frequently in the warmer months.	4/17/2018 8:57 AM
21	This is a very pleasant surprise and I know of many parents that will be over joyed that the parks are getting a much needed facelift	4/16/2018 6:33 PM
22	We use and appreciate many of the play areas in the neighbourhood. We miss the little park between Baudoux and Bernier.	4/16/2018 1:42 AM
23	No	4/15/2018 7:17 PM
24	Would you consider adding Fermor bike path accessibility from behind Penfold/Lochmore residences?	4/15/2018 3:45 PM

Windsor Park Neighbourhood Parks Redevelopment

25	I think it's unfortunate that the library has been moved, it was a nice place to be able to walk to from almost any where in WP. It was nice for the community and the new library doesn't have enough parking. Was WP residence asked about it as you are currently doing with these parks?	4/15/2018 2:53 PM
26	N/a	4/15/2018 11:29 AM
27	Agate bay park is a one minute walk from our place. I'd love to see this green space updated and revived to make it more welcoming and safe for our neighbourhood	4/15/2018 1:17 AM
28	A splash pad for this side of Windsor park. I feel it would attract more families in the area.	4/14/2018 4:49 PM
29	I played in Durham park as a child and it makes me very happy to see money put towards improving it for the next generation of children.	4/14/2018 4:48 PM
30	Need something to spruce up Windsor park A water park in Winnipeg would be nice	4/14/2018 4:00 PM
31	Would like to see long-term commitment to maintaining assets instead of letting them fall into disrepair. Creates headaches/expense down the road otherwise.	4/13/2018 9:50 AM
32	Have a separate off leash dog park so people have somewhere to take their dogs and they don't poop in all the other parks where my kids play	4/12/2018 9:47 PM
33	Thank you for asking our opinion.	4/12/2018 12:57 PM

Q15 How did you hear about this project? (Check all that apply)

Answered: 73 Skipped: 10



ANSWER CHOICES	RESPONSES
Phone Call	1.37% 1
Map at Windsor Park Library	1.37% 1
Public Engagement Newsletter	13.70% 10
Facebook	41.10% 30
Twitter	4.11% 3
Website	1.37% 1
Word of Mouth	28.77% 21
Other (please specify)	17.81% 13
Total Respondents: 73	

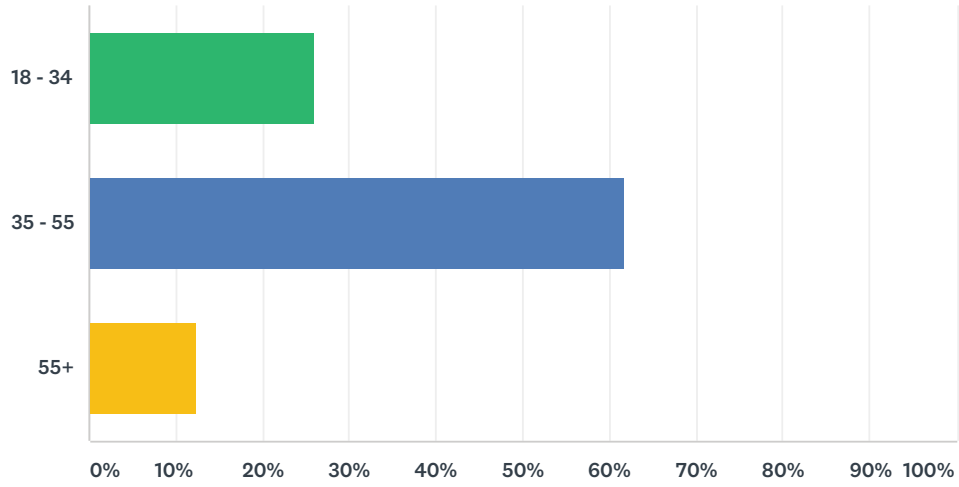
#	OTHER (PLEASE SPECIFY)	DATE
1	From my husband	4/30/2018 9:49 PM
2	work place	4/30/2018 7:09 PM
3	Library, local daycare	4/30/2018 4:08 PM
4	My kids preschool	4/30/2018 3:08 PM
5	Through child's school	4/28/2018 3:01 PM
6	A teacher at my child's school	4/28/2018 2:45 PM

Windsor Park Neighbourhood Parks Redevelopment

7	City invite	4/24/2018 4:50 PM
8	Facebook via Matt Allard	4/21/2018 10:23 PM
9	flyer in my mailbox	4/21/2018 9:18 PM
10	e-mail	4/16/2018 1:43 AM
11	email	4/13/2018 9:51 AM
12	City of Winnipeg email	4/13/2018 6:41 AM
13	COW email	4/12/2018 9:47 PM

Q16 What is your age?

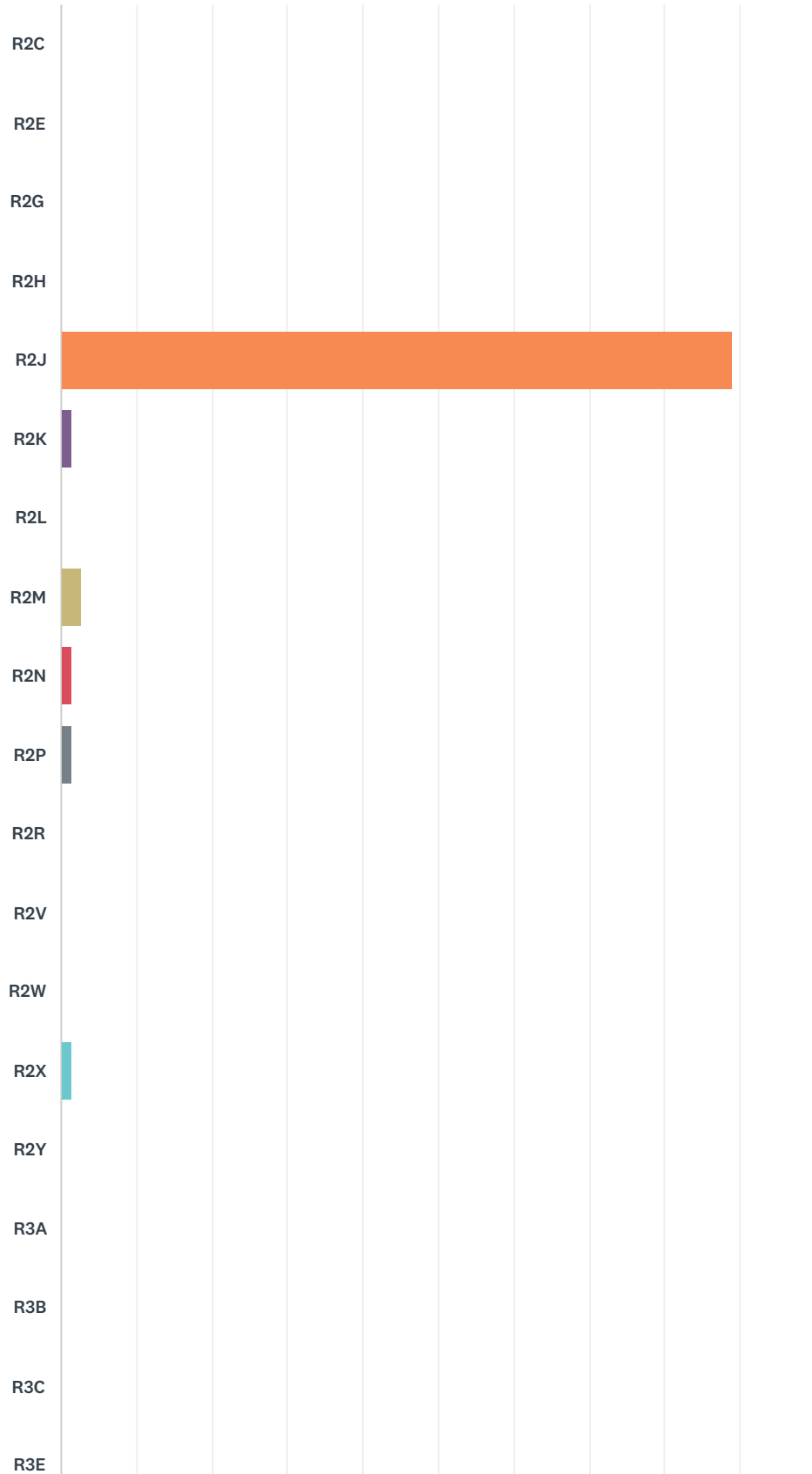
Answered: 73 Skipped: 10



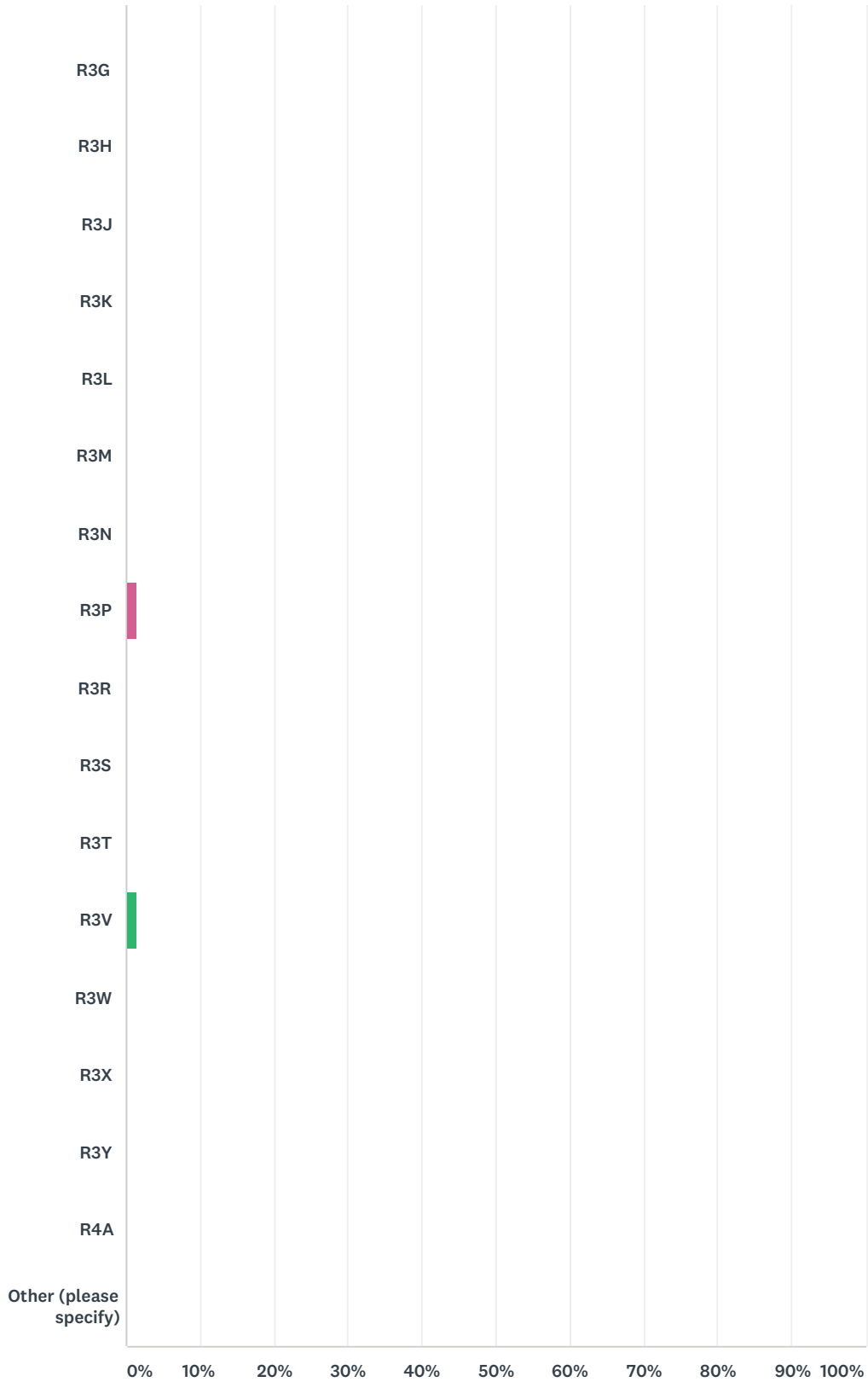
ANSWER CHOICES	RESPONSES	
18 - 34	26.03%	19
35 - 55	61.64%	45
55+	12.33%	9
TOTAL		73

Q17 Please provide the first three characters of your postal code.

Answered: 72 Skipped: 11



Windsor Park Neighbourhood Parks Redevelopment



ANSWER CHOICES	RESPONSES
R2C	0.00% 0
R2E	0.00% 0
R2G	0.00% 0

Windsor Park Neighbourhood Parks Redevelopment

R2H	0.00%	0
R2J	88.89%	64
R2K	1.39%	1
R2L	0.00%	0
R2M	2.78%	2
R2N	1.39%	1
R2P	1.39%	1
R2R	0.00%	0
R2V	0.00%	0
R2W	0.00%	0
R2X	1.39%	1
R2Y	0.00%	0
R3A	0.00%	0
R3B	0.00%	0
R3C	0.00%	0
R3E	0.00%	0
R3G	0.00%	0
R3H	0.00%	0
R3J	0.00%	0
R3K	0.00%	0
R3L	0.00%	0
R3M	0.00%	0
R3N	0.00%	0
R3P	1.39%	1
R3R	0.00%	0
R3S	0.00%	0
R3T	0.00%	0
R3V	1.39%	1
R3W	0.00%	0
R3X	0.00%	0
R3Y	0.00%	0
R4A	0.00%	0
Other (please specify)	0.00%	0
TOTAL		72

Windsor Park Neighbourhood Parks Redevelopment

#	OTHER (PLEASE SPECIFY)	DATE
	There are no responses.	

Date	Activity	Participation Level
Launched on April 12, 2018	Website	612 page views
April 12 – May 3, 2018	Online survey	83 completed surveys
April 12 – April 26	Pin board	Hosted at the Windsor Park Library. 17 pins and notes placed.
April 26, 2018	Public workshop	20 participants

What We Heard – requested elements	How It Was Considered*
New playground equipment that benefits children of all abilities.	<p>New play structures for children ages 2-12 will be incorporated into both park renovations.</p> <p>An accessible swing will be added to each park.</p> <p>Playground equipment will have a variety of components that support the following experiences: social / interpersonal interaction and cooperative play, imaginative/cognitive play, equipment to build/support the development of gross and fine motor skills, and components that include motion.</p> <p>Playgrounds will be designed for inclusive play using Universal Design principles include: tactile and auditory play experiences, integration of wheelchair accessible components to promote inclusive play, and appropriate layout for persons with visual impairment.</p>
Seating areas and benches	<p>Benches and picnic tables will be located in both parks in designated seating areas.</p> <p>A quiet seating area will be included at Agate Park.</p>
Pathway upgrades	<p>Agate Park will include an accessible concrete curb cut and sidewalk in the right of way and an accessible granular pathway to the play structure and seating area.</p> <p>Durham Park will include an accessible granular path to the play structure, seating areas, and a pathway through the centre of the park. In addition, the concrete sidewalk will be replaced between Durham Park and Durham Bay.</p>
Fencing	<p>A post and rail wood fence will be added to Agate Park to act as a visual barrier separating the park from the informal path and train tracks beyond the property line.</p>
Plant biodiversity	<p>Flowering shrubs are included in the design around the quiet seating area in Agate Park, to attract and support pollinators and increase biodiversity.</p> <p>One tree will be added to Durham Park, adjacent to the new play</p>