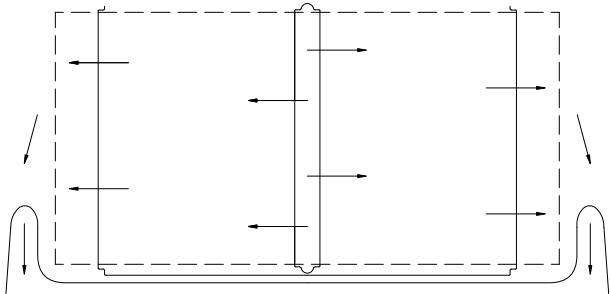
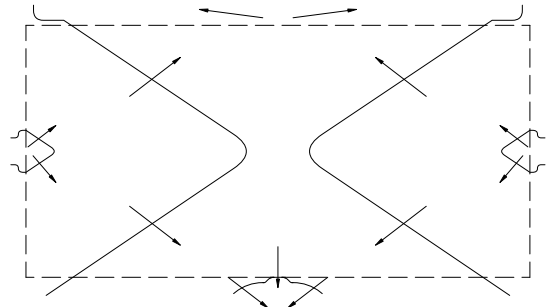


# Optimal Drainage Patterns For Sports Fields

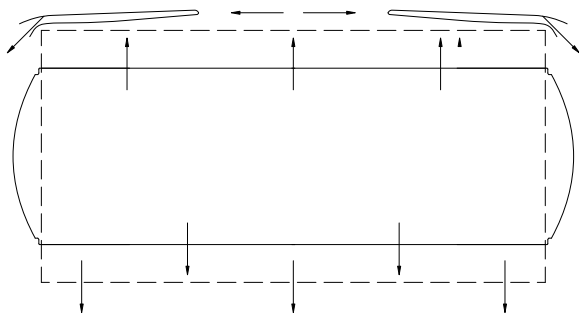
## SCD-306



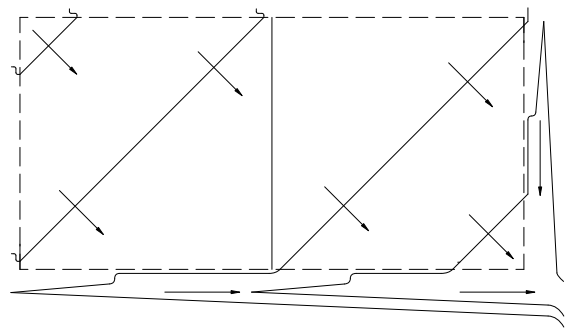
END



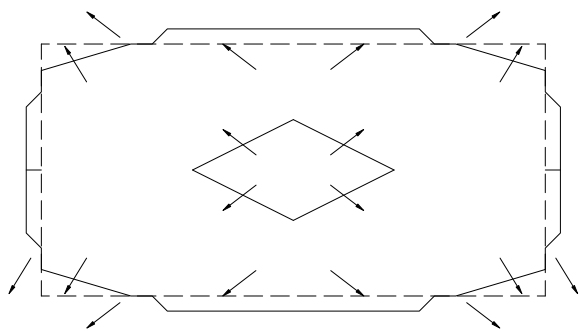
RIDGE



RIDGE


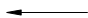



CORNER PITCH



HIGH POINT

### LEGEND

-  SPORTS FIELD
-  DIRECTION OF SURFACE DRAINAGE
-  GRAPHIC REPRESENTATION OF CONTOUR LINE (NO SCALE)

NOTE:  
 ATHLETIC FIELDS, GRASSED: MAX. SLOPE 1.75%; MIN. SLOPE 1%; PREFERRED SLOPE 1.5%.

Revision:

DATE: Nov 16, 2020

SCALE: N.T.S.

DRAWN BY: GZ

The City of Winnipeg  
 Planning, Property and Development Department  
 Urban Planning and Design Division  
 Unit 15 - 30 Fort Street, Winnipeg, MB, R3C 4X5

