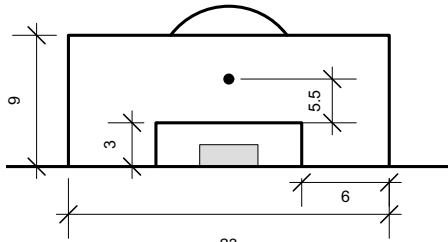


Drawing Title:

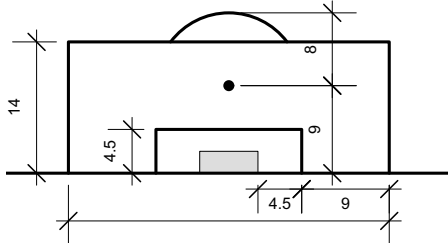
STANDARD SOCCER FIELD

Drawing No:

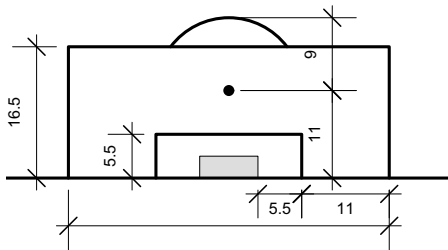
SCD-370



U9 - U10 PENALTY AREA



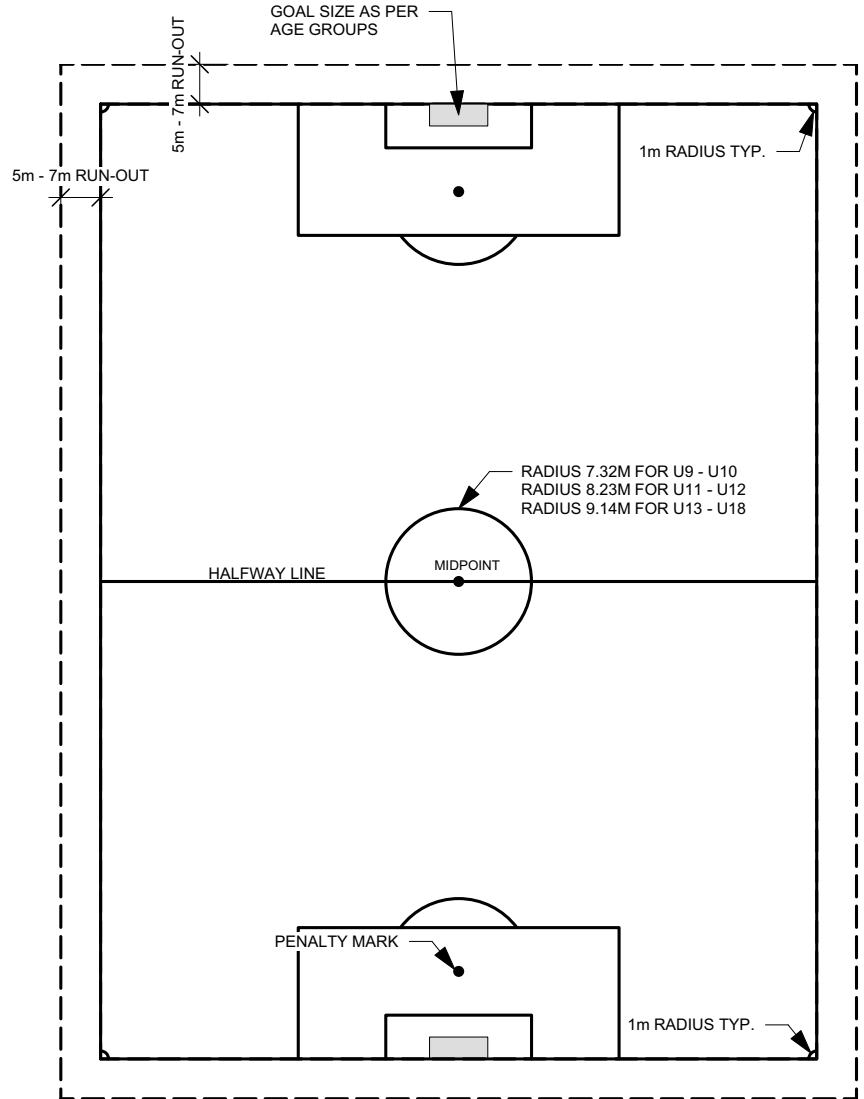
U11 - U12 PENALTY AREA



U13 - U18 PENALTY AREA

U9 TO U10		
MIN/MAX WIDTH	MIN/MAX LENGTH	GOAL SIZE
30m (98') to 36m (118')	40m (130') to 55m (180')	1.83m (6') X 4.88m (16')
U11 TO U12		
MIN/MAX WIDTH	MIN/MAX LENGTH	GOAL SIZE
41.75m (137') to 54.86m (180')	59.74m (196') to 75 m (246')	2.13m (7') X 5.48m (18')
U13 TO U18		
MIN/MAX WIDTH	MIN/MAX LENGTH	GOAL SIZE
45.72m (150') to 91.44m (300')	91.44m (300') to 119m (390')	2.44m (8') X 7.32m (24')

STANDARD FIELD SIZES PER AGE GROUP



STANDARD SOCCER FIELD
NOT TO SCALE

NOTES:

1. FIELD MARKING LINES TO BE OF A CONSISTENT WIDTH, MIN. 100mm & MAX. 120mm.
2. FIELD & RUN-OUT ZONES SHALL BE CONSISTENTLY GRADED AND FREE FROM UNDULATIONS AND PONDING WATER.
3. FIELD SLOPES TO BE MIN. 1% TO MAX. 1.75%.
4. REFER TO SCD-306 FOR FIELDS DRAINAGE PATTERNS.

Revision: R1
 DATE: Nov 16, 2020
 SCALE: N.T.S.
 DRAWN BY: GZ

The City of Winnipeg
 Planning, Property and Development Department
 Planning and Land Use Division
 Unit 15 - 30 Fort Street, Winnipeg, MB, R3C 4X5

