

Drawing Title:

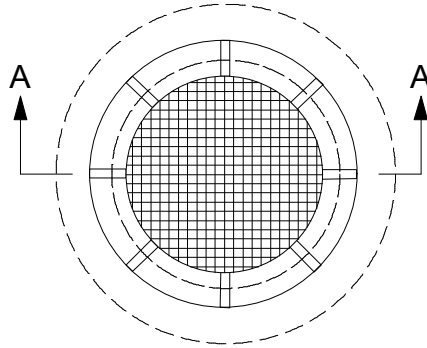
Drawing No:

STANDARD PRE-CAST CONCRETE CATCH PIT

SCD - 613

GENERAL NOTES:

1. EXCAVATION BEDDING AND BACKFILL AS PER CW 2030.
2. GRAVITY SEWERS AS PER CW 2130.
3. ADJUSTMENT OF PAVEMENT AND BOULEVARD STRUCTURES AS PER CW 3210.



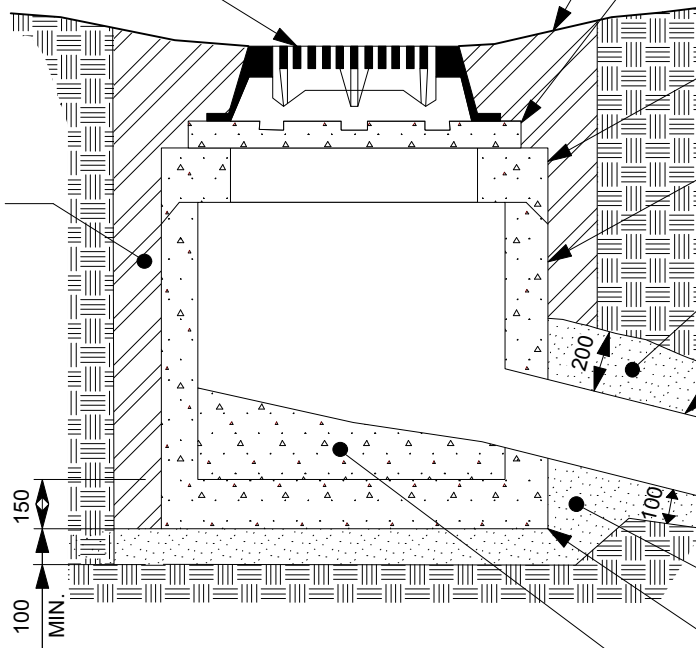
PLAN

CATCH PITS CAN ONLY BE USED WHEN CONNECTED TO A CATCH BASIN BEFORE CONNECTING TO THE MAIN LAND DRAINAGE SEWER LINE.

USE PRE-FORMED BITUMINOUS GASKET BETWEEN REDUCER AND BARREL SECTION.

STANDARD FRAME (AP-006) AND STANDARD GRATED COVER (AP-008)

SPECIFIED BACKFILL IN ACCORDANCE WITH CW 2030 and SD-002



SECTION A - A

FINISHED GRADE

MAXIMUM 2-750 DIA. PRECAST CONCRETE ADJUSTING RINGS OR 1 LAYER CONCRETE BRICK AND GROUT AS REQUIRED TO MAKE WATER TIGHT

900 DIA. X 750 DIA. PRECAST CONCRETE REDUCER

900 DIA. X 460 PRECAST CONCRETE CATCH PIT SECTION TO ASTM C 478 AND C76 CL II

INITIAL BACKFILL IN ACCORDANCE WITH CW 2030 AND SD-001

MINIMUM 250 DIA. LEAD TO CATCH BASIN

BEDDING IN ACCORDANCE WITH CW 2030 AND SD-001

PRECAST CONCRETE BASE

GROUT TO SLOPE IN FIELD

DIMENSIONS SHOWN ARE IN MILLIMETRES UNLESS OTHERWISE SPECIFIED

DATE: October 5, 2016
 SCALE: NTS
 DRAWN BY: HF

The City of Winnipeg
 Planning, Property and Development Department
 Planning and Land Use Division
 Unit 15 - 30 Fort Street, Winnipeg, MB, R3C 4X5

