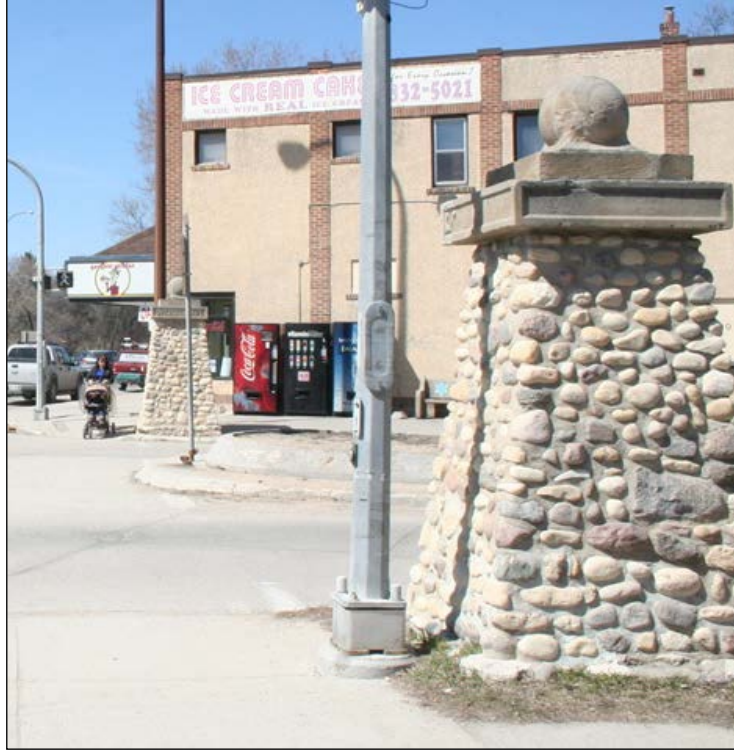


OVERDALE STREET AT PORTAGE AVENUE – STREET PILLARS

Unknown, 1911



These concrete and stone pillars, located on the northeast and northwest corners of Portage Avenue and Overdale Street, are unique in the City of Winnipeg and are reminders of the early 20th century residential development in the St. James region.

The post-European contact history of St. James includes the settling of the Parish by ex-fur traders and their families along the Assiniboine River on long, thin strips of land known as River Lots. After the Province of Manitoba was created, municipalities were created, including the Rural Municipality of Assiniboia in 1880, located on both sides of the river.

For the area, the extension of the streetcar lines to Deer Lodge in 1903 and the opening of City Park (now Assiniboine Park) in 1904 brought heightened contact of and interest in the area. Real

estate firm George A. Glines and Company sought to take advantage of this interest by creating a new subdivision, Oakdale Park, north of Portage Avenue. Overdale Street, with its wide well-treed boulevard, was the central thoroughfare.

The developer delineated the subdivision by constructing five pairs of stone and concrete pillars. The five sets were built in 1911 on the north side of Portage Avenue at the corners of Overdale Street, Winchester Street (one block east) and one on the west side of Linwood Street (one block further east). The pairs were comprised of a larger pillar at the street, with a cement cap with ball and carved signage. Smaller pillars were built on the other side of the sidewalk. Only the large Overdale Street pillars remain from the original 10 elements and the original lettering “OAKDALE PARK” has been replaced by “OVERDALE AVE.”.

It is unknown who designed and built the pillars but the construction was overseen by Frederick H. Stewart, a partner of Glines and Company.

Any alteration or repairs to the two pillars would require design approval and a heritage permit.