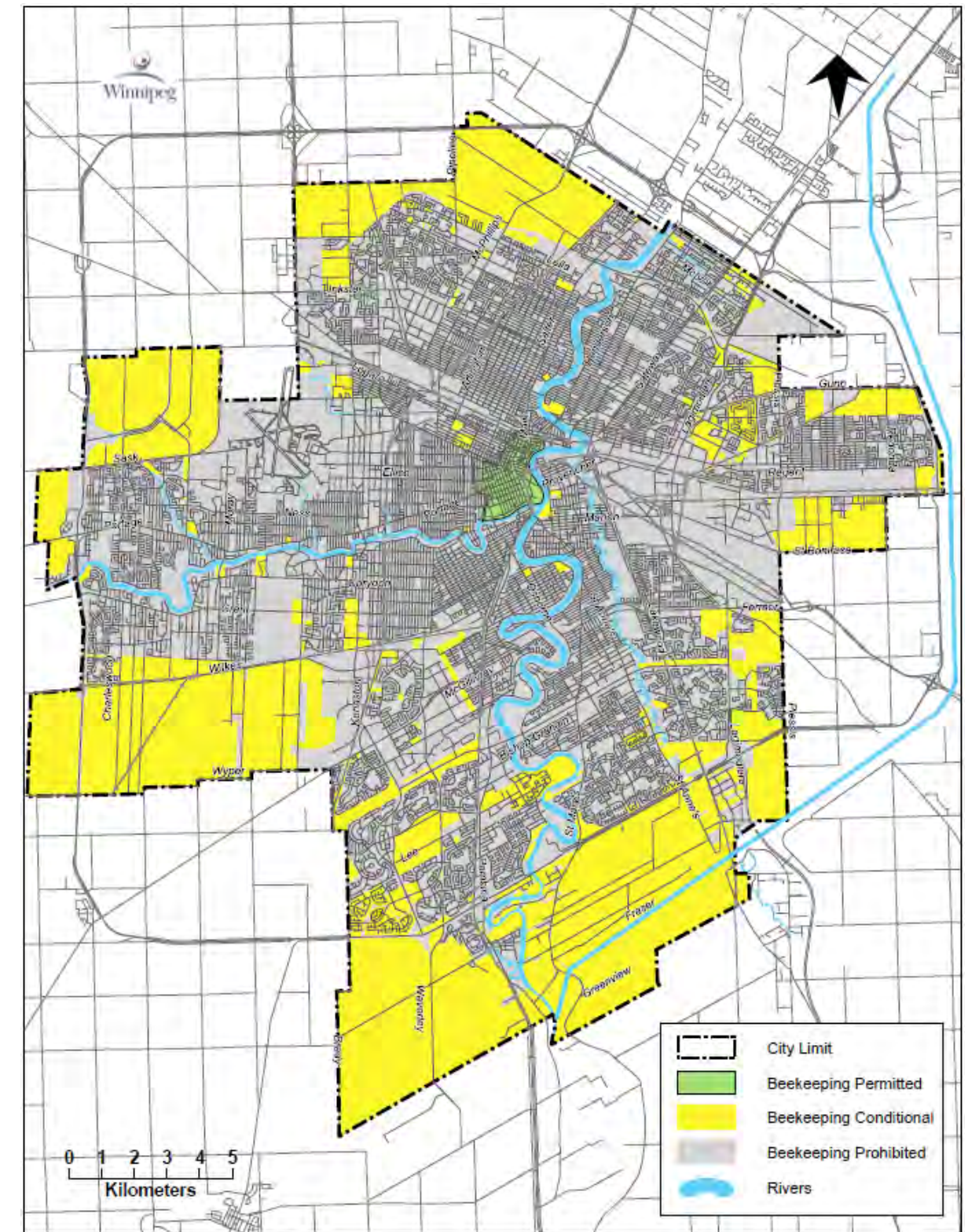


# Bees in Winnipeg

The City of Winnipeg is looking at expanding opportunities for urban beekeeping through by-law amendments.

- Beekeeping is currently permitted downtown and is also possible in agricultural and institutionally zoned areas through conditional use and a public hearing.
- It is currently prohibited in residential, commercial and industrial areas.
- Bees in nature (bumble bees, mason bees, leafcutter bees) are not regulated and live throughout our City.
- Under the *Bee Act of Manitoba*, the province registers all commercial, educational and hobby beehives, including those in Winnipeg.



The City of Winnipeg has developed the following guidelines for downtown beekeeping:

## *Best Practice*

- Urban beekeeping is discouraged before completing a recognized course in beekeeping and/or seeking membership in a local bee club.
- All beekeepers shall register with the provincial apiarist and shall comply with the *Manitoba Bee Act* wherever required.
- Every beekeeper shall adhere to good management and husbandry practices and maintain bees in such condition as to prevent swarming, aggressive behaviour and disease.
- Indications of disease should be reported to the provincial apiarist.

## *Planning and Design Standards*

- Maximum number of hives on a downtown site is four plus one nucleus hive.
- Ensure the following beehives requirements are met:
  - Located to ensure adequate sun exposure and airflow for the health of the bees.
  - Hive openings are oriented away from nearby public spaces, balconies, terraces or elevated patios.
  - A constant source of water is provided at all times for hives starting before the snow melts in the spring and continuing late into fall.
- Hives must be within a secure fenced enclosure. Hives should be set back at least 20 feet (6 metres) from the edge of a permeable fence.
- No setback is required if it is a solid fence or includes a vegetative obstruction at least 5 feet (1.5 metres) tall.

# Why allow more beekeeping?

Urban beekeeping is a growing trend across Canada and internationally for the following reasons:

- *Biodiversity* – bees are part of a balanced ecosystem;
- *Bee population* – bee numbers have been declining in recent years;
- *Interest and education* – beekeeping provides opportunities to learn about science and nature, fostering environmental stewardship;
- *Local food production* – one bee hive can produce 100 pounds of honey in a year and is part of the small-business economy;
- *Pollination* – one third of food crops require pollination, and bees are responsible for the majority of pollination.

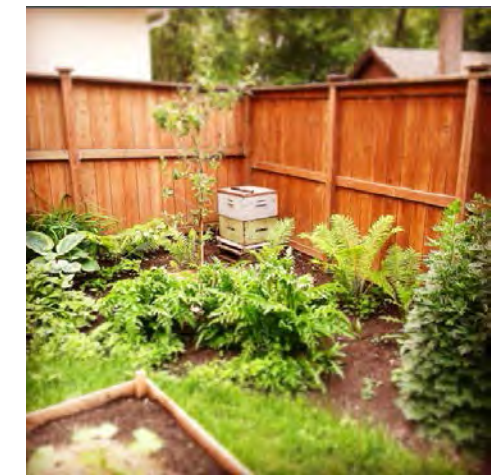
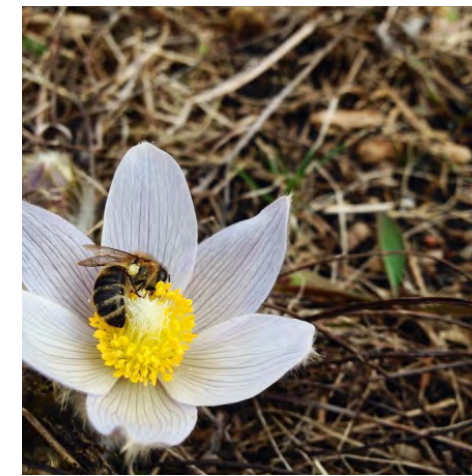


Photo credit: Beeproject Apiaries

# What do I need to know?

*Should we be concerned about bees becoming a nuisance?*

Honey bees are very docile, and are only interested in flowers. They don't congregate in one neighbourhood, but instead travel up to five kilometres in a day, seeking pollen. Unlike wasps, they are not attracted to food and drinks and avoid human contact.

*What if I have allergies?*

The City only regulates hives for one type of bee – the European Honey Bee. There are several species of bees that are native to Manitoba and live throughout our city, including bumble bees, mason bees and leafcutter bees. Since allergies can be quite serious, those with severe allergies must be proactive when spending time outdoors. Allergies to wasp stings are actually far more prevalent than allergies to bee stings.

*Is swarming a risk?*

Swarms are a natural occurrence that can happen when the bee population within a hive grows beyond capacity. Bees in a swarm may be discovered resting on a tree or other structure. Swarms are not aggressive and can easily be gathered and rehoused by notifying the provincial apiarist.



Photo credit:  
Beeproject Apiaries

*What about mosquito fogging?*

Bees do not forage at night, when mosquito fogging occurs. To help protect hives, the City will establish a 90 metre buffer zone around a registered beekeeping operation.

# Urban beekeeping in other cities

City	Permitted?	Provincial registration and inspection?	Notes
Vancouver	✓	✓	<ul style="list-style-type: none"> <li>The city has guidelines</li> </ul>
Calgary	✓	✓	<ul style="list-style-type: none"> <li>The city refers to industry guidelines</li> </ul>
Edmonton	✓ <i>At discretion of municipal Animal Control</i>	✓	<ul style="list-style-type: none"> <li>The city has guidelines, regulations and an approval process</li> <li>Public notification about a hive is required</li> <li>Inspections are made by municipal Animal Control</li> </ul>
Saskatoon	✓	✓	<ul style="list-style-type: none"> <li>The city requires proper maintenance and care of hives</li> </ul>
Toronto	✓	✓	<ul style="list-style-type: none"> <li>30 metre setback required under provincial act</li> </ul>
Ottawa/Gatineau	✗	✓	<ul style="list-style-type: none"> <li>Prohibited except in agricultural areas</li> </ul>



