

Background

The newly-named Gord Dong Park is located on green space west of the Exchange District along Ross Avenue between Ellen Street and Paulin Street. The south side of the site is currently used for community gardens. In the Fall of 2017, the City of Winnipeg (the City) worked with stakeholders and residents to determine future park enhancements. The park enhancement project and funding are subject to Council approval.

Engagement

The goal of the engagement process was to consult with stakeholders and the public to determine how to develop the green space to meet the needs of diverse users. A vision for the park was collected from attendees at a park dedication event on September 26, 2017. Following the park dedication, participants were given the opportunity to provide feedback through an online survey and at an in-person workshop.

Promotion

Public engagement opportunities were promoted using the following methods:

- City of Winnipeg website;
- News release on September 26, 2017;
- Facebook posts with 16,797 followers;
- Twitter posts with 78,700 followers;
- City of Winnipeg public engagement newsletter with over 5,300 recipients,
- Email invite to neighbourhood stakeholders promoting dedication event; and,
- Poster and emails promoting workshop.

What We Heard

Park Dedication Event

- During the September 26, 2017 event, 14 residents filled out a form asking them to finish the statement, "My vision for Gord Dong Park is...". The most common themes included:
 - A play structure/children's park (5 responses or 36%)
 - Fitness area (4 responses or 29%)
 - Sitting area (2 responses or 14%)

Public Workshop

- Participants recognized there are several playgrounds in close proximity to the park and expressed a desire to design the space for adult use.
- Several unofficial trails were identified across the green space, noting the park's common use as a cut through en route to other areas in the neighbourhood.
- Participants identified their top six enhancements and ranked in order of preference:
 1. Community garden with water hook up;
 2. Paths;
 3. A multi-use sports court;
 4. The addition of fruit bearing trees or edible plants;
 5. Gathering pavilion; and,
 6. Public art.

Online Survey

- Online the majority of respondents (59%) noted they did not visit the green space but results showed a strong preference develop the park with those who live in the area in mind.
- Of those respondents who do visit the park, benches were commonly (60%) requested, active amenities were rejected (40%), while

preservation of trees (40%) and additional lighting (40%) were valued. When asked if additional garden boxes would be used, visitors were split on yes (40%) or no (40%) with a few unsure (20%).

Date	Activity	Participation Level
Launched on Sept. 22, 2017	Website	126 page views
Sept. 22 – Oct. 23, 2017	Online survey	27 completed surveys
Sept. 26, 2017	Dedication event	14 completed visioning cards Event received media coverage by CBC, Canstar, CTV.
Oct. 19, 2017	Public workshop	14 participants

What We Heard – requested elements	How It Was Considered*
Play structure	Not included in the design due to close proximity of other playgrounds in the area.
Fitness area	Not included in design (cost and space considerations).
Sitting areas and benches	Several included throughout – formal and informal seating proposed for different sized groups.
Community garden with water hook up	Included in plan. The garden boxes are planned to increase in number and proposed to move to the north side of the park. The hope is that having a water source will increase demand for
Paths	Main paths are placed at or near existing informal paths.
A multi-use sports court	Not included in the design (cost and space considerations).
The addition of fruit bearing trees or edible plants	“Orchard area” included in the design. Edibles (blueberries, raspberries etc.) may be included in some of the planting areas.
Gathering pavilion	Included in the overall plan with a pergola-type shade structure.
Public art	A space has been set aside in the design as a “community node”, which could potentially house public art pieces
Lighting	Additional light standards are included.

*Elements noted are in the proposed design and may be subject to change depending on approvals and funding.

Next Steps

Using the feedback provided, the project team has proposed a park design that will serve as a community hub for planned events and informal gatherings. The design includes references to the history of the space with fruit trees planted in acknowledgment of the historic 'fruit row' sale district, and a gravel path following the approximate location of the former Brown's Creek. Outside the community gardens, programmed active amenities have not been included in the design but almost half of the space will remain an open lawn.

Additional design elements include:

- Space for the maker's market along the main path
- An entry plaza with sign/entry feature
- Compost area
- Accessible planters
- Barbecue pits with informal boulder seating
- A community oven

Approval and funding for this project is subject to Council consideration. The contract will be issued for tender in spring 2018. Construction is expected to start in spring/summer 2018.

See the conceptual design in Appendix A of this report.

- Appendix A – Conceptual design
- Appendix B – News release
- Appendix C – Workshop poster
- Appendix D – Visioning exercise results
- Appendix E – Workshop boards
- Appendix F – Workshop workbook
- Appendix G- Workshop results
- Appendix H- Exit survey
- Appendix I – Online survey results

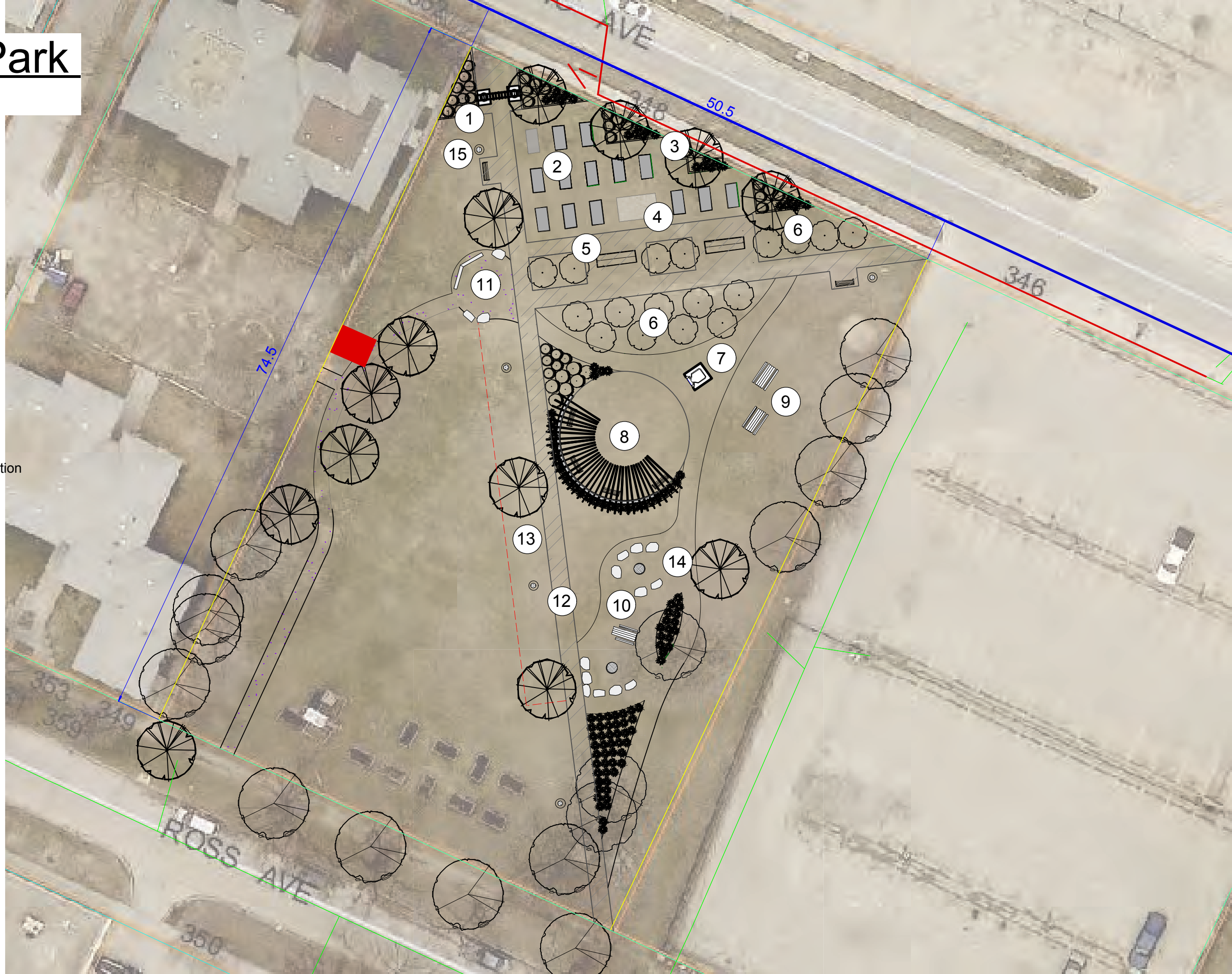
Appendix A

Conceptual Design

Gord Dong Park

Conceptual Design

- ① Entry Plaza with Sign
- ② Community Gardens
- ③ Water Service
- ④ Compost Area
- ⑤ Accessible Planters
- ⑥ Fruit Trees
- ⑦ Community Oven
- ⑧ Sunken Plaza w/ Pergola
- ⑨ Picnic Area
- ⑩ Barbecue Area
- ⑪ Community Node- Historical Information and Bulletin Board
- ⑫ Asphalt Path
- ⑬ Makers Market Area
- ⑭ Compacted Gravel Path
- ⑮ Light Standards (5)



Appendix B

News Release



INFORMATION - COMMUNIQUÉ

For Immediate Release
Tuesday, September 26, 2017

Pacific Avenue green space officially dedicated as Gord Dong Park

Winnipeg, MB – At an event this morning, Councillor Mike Pagtakhan and the community officially named a green space on Pacific Avenue Gord Dong Park, and invited the public to provide feedback on how the space should be developed.

“It’s an honour to name this park after Mr. Gord Dong, an important member of the community and a founding member of the Centennial Community Improvement Association,” said Councillor Pagtakhan, City Councillor for Point Douglas and Chair of the Standing Policy Committee on Protection, Community Services, and Parks. “I look forward to talking to the public to gather important feedback that will shape the park’s future and meet the needs of the community.”

The newly-named Gord Dong Park is located along Pacific Avenue between Ellen Street and Paulin Street. The south side of the park is currently used for community gardens. To add to the diverse recreational needs of site users, the City of Winnipeg is working with stakeholders and residents to determine future park enhancements. Early in the engagement process, stakeholders have proposed several ideas for the park space, including a community garden, a fitness trail, and a contemplative space. Over the coming months, input will be collected and these ideas and others will be explored for the development of the park.

The public can provide feedback on the future recreational use of Gord Dong Park through an online survey, or through in-person engagement sessions. The [online survey](#) will be open until October 13, 2017. The in-person public workshop will be held on Thursday, October 19 from 6 p.m. to 8 p.m. at the Winnipeg Chinese Cultural and Community Centre, 2nd Floor, [Dynasty Building - 180 King Street](#).

For more information on Gord Dong Park, please see winnipeg.ca/GordDongPark.

Media inquiries should be directed to the City of Winnipeg Media Inquiry Line at 204-986-6000 or via email at City-MediaInquiry@winnipeg.ca.

Follow us on Facebook: facebook.com/cityofwinnipeg

Follow us on Twitter: twitter.com/cityofwinnipeg

Appendix C

Poster

Gord Dong Park Redevelopment

To add to the diverse recreational needs of site users, the City wants to hear from you to help determine future park enhancements. We are asking for your ideas on services that will best meet the needs of the community, while also attracting new people to the space and setting the tone for future developments in the surrounding area.



Date: Thursday, October 19, 2017

Time: 6 p.m. - 8 p.m. *

Location: Winnipeg Chinese Cultural and Community Centre, 2nd Floor
Dynasty Building 180 King Street

If you would like to attend the workshop, please
[RSVP at \[winnipeg.ca/GordDongPark\]\(https://www.winnipeg.ca/GordDongPark\)](https://www.winnipeg.ca/GordDongPark)

Appendix D

Visioning Exercise

Gord Dong Park

Tactic: Visioning at naming ceremony

Action: Attendees at Sept. 26, 2017 event to unveil the park's new name were asked to write on a large cut out in the shape of a seed. They were to finish the statement. "My vision for Gord Dong Park is..." and to place their answers inside a gardening pot.

Results: A total of 14 people responded

Top answers included a play structure/children's park (5), fitness areas (4), and sitting areas (2).

- *Children's Park ect. swings, slide, sandbox, splash pad*
- *Giant oak tree!*
- *A little plaque describing who Gord is.*
- *Parkour/ fitness structure*
- *Parkour park*
- *A running track to encourage health life-style and activity*
- *A community garden with an accessible water source*
- *Sitting area*
- *Play structures*
- *Sitting areas*
- *Barbeques/ like at Assiniboine Park*
- *Kids playground*
- *Amphitheatre*
- *Play structure*
- *Sandbox*
- *Raccoon sanctuary*
- *To have more lights*
- *Trash cans*
- *A fun based exercise environment/equipment for older kids (younger ones have a good park nearby)*
- *Special needs play structures and swings*
- *Pool with ramps*

See image 1.



Image 1

Appendix E

Workshop Boards



GORD DONG PARK OPEN HOUSE - WELCOME

Welcome to the Open House on Gord Dong Park

Green space west of the Exchange District (Ross Avenue between Ellen Street and Princess Street) has become available to the City to develop as park space. The area sees a variety of uses and people — residents, students, entrepreneurs, churchgoers, and more. The City would like to consult with stakeholders and the public to determine how to develop the green space to meet the needs of diverse users. Early in the engagement process, stakeholders have proposed several ideas for the park space, including a community garden, a fitness trail, and a contemplative space.

Please participate today by:

1. Viewing the story boards about the park
2. Take a seat at a table to participate in the workshop activities
3. Provide feedback through a short exit survey

Thank-you!

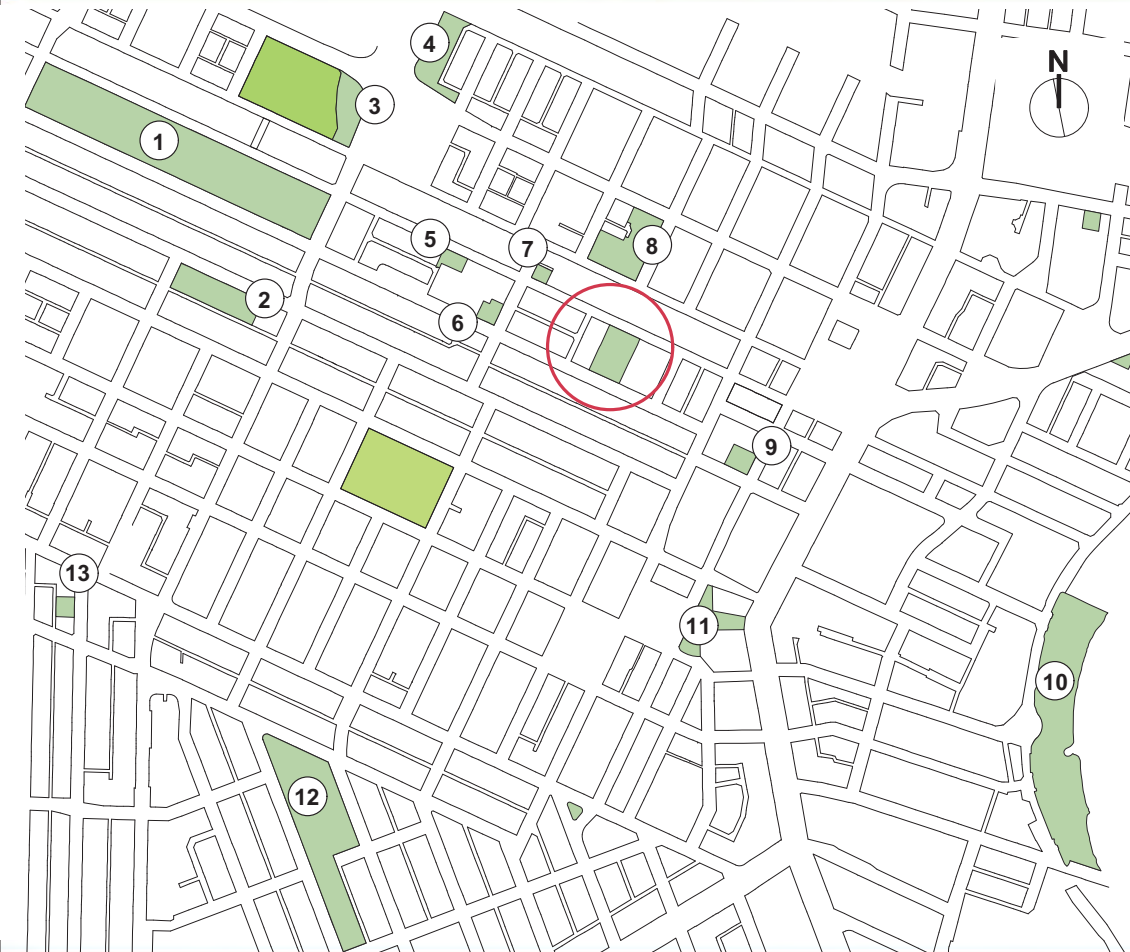
GORD DONG PARK OPEN HOUSE - SITE CONTEXT



- Park
- Red River College
- Planned Development
- Community Centre / Club
- City Hall
- Residential
- Health Care Facility
- School



GORD DONG PARK OPEN HOUSE - ADJACENT PARKS



- ① Freight House
Playground
Outdoor Pool
Skate Park
Basketball Courts
Baseball Fields
Splash Pad
 - ② Roosevelt Park
Playground
 - ③ Dufferin and Isabel Park
Sports Fields
 - ④ North Logan Park
Sitting Areas
Playgrounds
 - ⑤ Pacific Avenue Tot Lot
Playground
 - ⑥ Ross Ellen Playground
Playground
 - ⑦ Ellen and Pacific Tot Lot
 - ⑧ Lizzie Playground
Playground
Wading Pool
 - ⑨ Chinese Gardens
Sitting Areas
 - ⑩ Stephen Juba Park
Walking Paths
Sitting Areas
 - ⑪ Old Market Square
Public Events
Sitting Areas
Stage
 - ⑫ Central Park
Playground
Wading Pool
Sports Field
Splash Pad
 - ⑬ Spence Tot Lot
Playground
- School Greenspace



Freight House



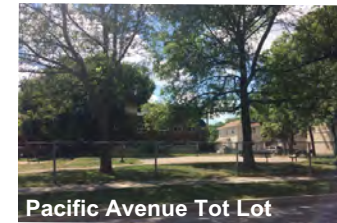
Lizzie Playground



North Logan Park



Ross Ellen Playground



Pacific Avenue Tot Lot



Chinese Gardens



Old Market Square



Roosevelt Park

GORD DONG PARK OPEN HOUSE - SITE HISTORY



Records from the early 1900s indicate that the area near the current Gord Dong Park site was a rapidly-changing, and predominantly made up of a mix of residences and businesses. Operating at this time were a **veterinary hospital** (350 Pacific Ave.) and the **Mattson John Sash Door Factory** (338-340 Pacific Ave.). Nearby and still within the blocks bounded by Ross Avenue and Pacific Avenue, Paulin Street and Ellen Street, were the **Metropole Hotel** (325-327-329 Ross Ave.) and two **Chinese laundries** (373 Ross Ave. and 390 Pacific Ave.). T.L. You is listed as operating the laundry at 373 Ross Ave., and Lee Sing is listed as operating the laundry at 390 Pacific Ave. (Source: Henderson Directories, circa 1905). The laundries were located directly north of the future park site and east of Ellen Street. In addition to these buildings, maps and other records show there was an additional street between Paulin Street and Ellen Street, Leonard Street, which was bounded by Ross Avenue and Pacific Avenue.

Council records from the 1970s and onwards indicate that multiple parties had an invested interest in the lands in and around the future park site. Given that the site was either directly or indirectly affected by development plans for the area, a complicated picture emerges. However, we can piece together the following:

1975 Paulin Chambers plans to expand operations and indicates to Council it would be interested in acquiring lands to the west of its property, an area roughly defined as being bounded by Pacific Avenue, Ross Street, Leonard Street and Paulin Street (Source: Minutes of the Board of Commissioners, 1975, No. 331). It appears these were Urban Renewal Partnership and City lands (Source: Referenced in Minutes of City Council, 1979, No. 1050).



1976 Council passes a by-law to close Leonard Street and Paulin Street, between Pacific Avenue and Ross Avenue and a public lane. Closures permit the proposed expansion of Paulin Chambers and a new plan for development of multiple-family housing by the Manitoba Housing and Renewal Corporation on the area roughly defined as "the property west of the Paulin Chambers expansion" (Source: Minutes of City Council, 1976, No. 1505, 1509, 1644, and By-law 1360/76). Note: Manitoba housing presently located east of the park site appears to date to 1977 and 1978.

1978? Plans to expand Paulin Chambers halts when the one of the Urban Renewal partners, the Central Mortgage and Housing Corporation, objects. (Source: Referenced in Minutes of City Council, 1979, No. 1050).

1979 Faced with ongoing issues with the proposed expansion of Paulin Chambers, City discusses re-opening Paulin Street (Source: Minutes of City Council, 1979, No. 1050).

1980 Faced with ongoing issues with the proposed expansion of Paulin Chambers, Finance Committee recommends purchasing land defined as parcel 14 (sketch plan no. C3327/1C) from the Urban Renewal Partnership to build a parking lot.

2012 The property receives interest from the Winnipeg Housing Rehabilitation Corporation. A building was never developed and the sale was rescinded.



Farmer's Market
Old Market Square



Paulin Chambers Co.
311 Ross Ave



Scott Fruit Co.
319 Elgin Ave.

Appendix F

Workshop Workbook

Gord Dong Park Redevelopment

Public Workshop



Thursday, October 19th, 2017

winnipeg.ca/GordDongPark



Workshop Purpose

To add to the diverse recreational needs of site users, the City wants to hear from you to help determine future park enhancements. We are asking for your ideas on services that will best meet the needs of the community, while also attracting new people to the space and setting the tone for future developments in the surrounding area.

Agenda

Activity	Details	Duration
Arrive and review information packages	Informal start to view information package	15 min
Project presentation	Project intent and additional details including quick overview of public input gathered so far.	10 min
Workshop introduction	Introduce format and activities	5 min
Activity 1: Recreation options in area	Group work activity	15 min
Activity 2: Gord Dong Park use and issues	Group work activity	15 min
Break (10 min)		
Activity 3: Park enhancements	Group work activity Report back	30 min 20 min
Activity 4: Enhancement ranking	Choose top three enhancements Voting	10 min
Closing remarks and exit survey	Please complete a survey to provide additional feedback	5 min

Instructions

- The workbook you have been provided includes four tasks:
 - Task 1: Discuss and map current recreational opportunities in the area.
 - Task 2: Discuss and map current use and any issues within Gord Dong Park.
 - Task 3: Develop and rank top enhancements desired in Gord Dong Park.
 - Task 4: Rank popular enhancements personally.

- Discussions will be facilitated in a group setting. Each group shall identify a recorder and someone to report back.
- The **recorder** will:
 - Record your group's ideas in point form on the maps
- The **reporter** will:
 - Use the maps to present key discussion points to the larger group at the end of task 4.
Ensure the group is staying on time to complete all parts of the activity before reporting back.

TASK 1: RECREATION OPTIONS IN AREA (15 min)

Goal: As a group, discuss the parks and recreational activities available in the area and mark up the map with recreational activities that are missing.

Instructions:

Step 1: Review the *Activity 1* map of *adjacent parks and current recreational opportunities* available in the area.

Step 2: Use the markers to write on maps to indicate park areas and recreation activities that are well used and why.

Step 3: Discuss and recreational activities that are missing from the area or that are difficult to access. Consider the following:

- Which groups of people should we be considering when developing new parks in this area?
- What amenities should commonly be available within a five to ten minute walking distance?
- Which area parks, if any, are in your mind overused?

Notes:

TASK 2: GORD DONG PARK USE AND ISSUES (15 min)

Goal: As a group, discuss current values and use of Gord Dong Park. Mark up the map with areas of current importance and any concerns with the park as it is right now.

Instructions:

Step 1: Review the *Activity 2: Gord Dong Park* map and reflect on the park as it is right now.

Step 2: Discuss and record on the map what you like about the park. Consider the following:

- What do you usually use the park for?
- What do you want to use the park for?
- What do you like about the way that people are currently using the park?

Step 3: Discuss and record on the map what you don't like about the park.

Notes:

TASK 3: PARK ENHANCEMENTS (30 min)

Goal: As a group suggest new park enhancements, keeping in mind the discussions from earlier about what is or isn't available in the area and who is mostly likely to use the park.

Instructions:

Step 1: Open the Activity 3 package to view images of possible park enhancements, if you would like to include one of these enhancements in the park place it on the map in the rough location of where you would like it to appear. Write any additional comments you may have about the addition on the enhancement's backside.

Step 2: Also provided is blank paper that can be cut into shapes. These can be used to add additional enhancements to the park. Describe the enhancement on one side, add comments it the backside and place it on the map.

Step 3: Discuss why you have not placed some of the possible park enhancements on the map. Add notes on the backside of these elements and place them back in the envelope.

Step 4: Ask a facilitator to photograph your completed map.

Notes:

At the end of the task, each group will present what they added to the map and summarize their discussions for the larger group (10 min).

TASK 4: ENHANCEMENT RANKING AND VOTING (10 min)

Goal: Choose top three enhancements as a group and vote for the park enhancements from all of the groups that you would like to see most.

Instructions:

Step 1: Each group will receive three flower pots with a blank label. Discuss park enhancements as a group to decide on the top three enhancements the group would like to see in Gord Dong Park the most. Label each one of the flower pots with one of your group's top three chosen enhancements.

Step 2: Bring the three labeled flower pots to a central location in the room.

Step 3: Each individual will be provided with five seeds.

Step 4: Each individual has five seeds to place five votes for the park enhancements decided on by all groups. Place the seeds in the pots of the enhancements you like best. You may split the seeds among different pots.

Notes:

Thank you for participating today!

Appendix G

Workshop Results

ACTIVITY 1: AREA RECREATION OPTIONS

NOTES



- 1 Freight House Playground
Outdoor Pool
Skate Park
Basketball Courts
Baseball Fields
Splash Pad
- 2 Roosevelt Park Playground
- 3 Dufferin and Isabel Park Sports Fields
- 4 North Logan Park Sitting Areas
Playgrounds
- 5 Pacific Avenue Tot Lot
- 6 Ross Ellen Playground Playground
- 7 Ellen and Pacific Tot Lot
- 8 Lizzie Playground Playground
Wading Pool
- 9 Chinese Gardens Sitting Areas
- 10 Stephen Juba Park Walking Paths
Sitting Areas
- 11 Old Market Square Public Events
Sitting Areas
Stage
- 12 Central Park Playground
Wading Pool
Sports Field
Splash Pad
- 13 Spence Tot Lot Playground

**LIZZIE WELL USED
ROOSEVELT WELL USED
SKATE PARK WELL USED**

**STUDY SPACE
PUBLIC GATHERING SPACE
* ADULT SPACE (ENOUGH KID SPACE NEAR)**

*** MULTI-USE SPACE
60-80' x 120-150' (URBAN POOL)
STUDENTS LIVE NEARBY**

**WAYFINDING
BENCHES + TABLES**

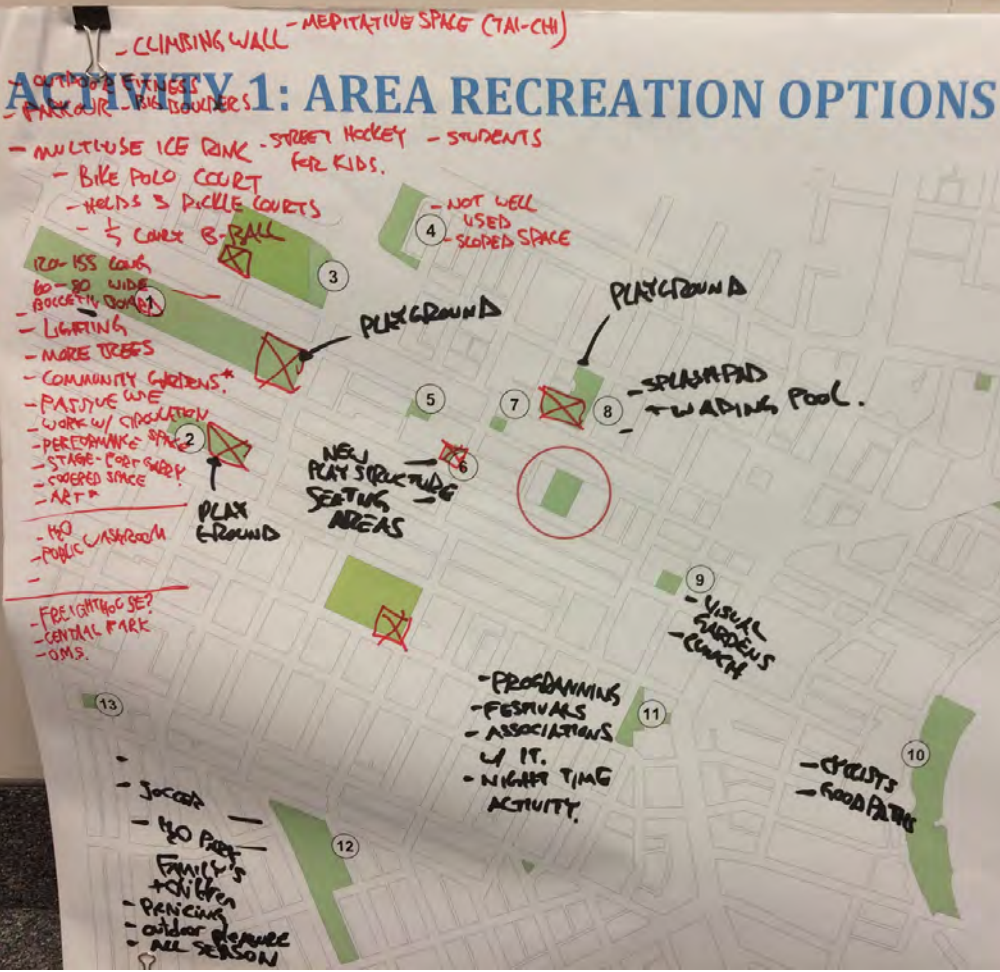
**OUTDOOR RINKS
- FREIGHTHOUSE/THE FORKS/
CENTRAL PARK**

FIREPITS?

**ACROSS BEHIND MIL. BRARY
- RUNNING TRACK
- WATER SOURCE FOR GARDENS
- FRUIT TREES
- FIRST NATIONS GARDENS
- WATER SOURCE**



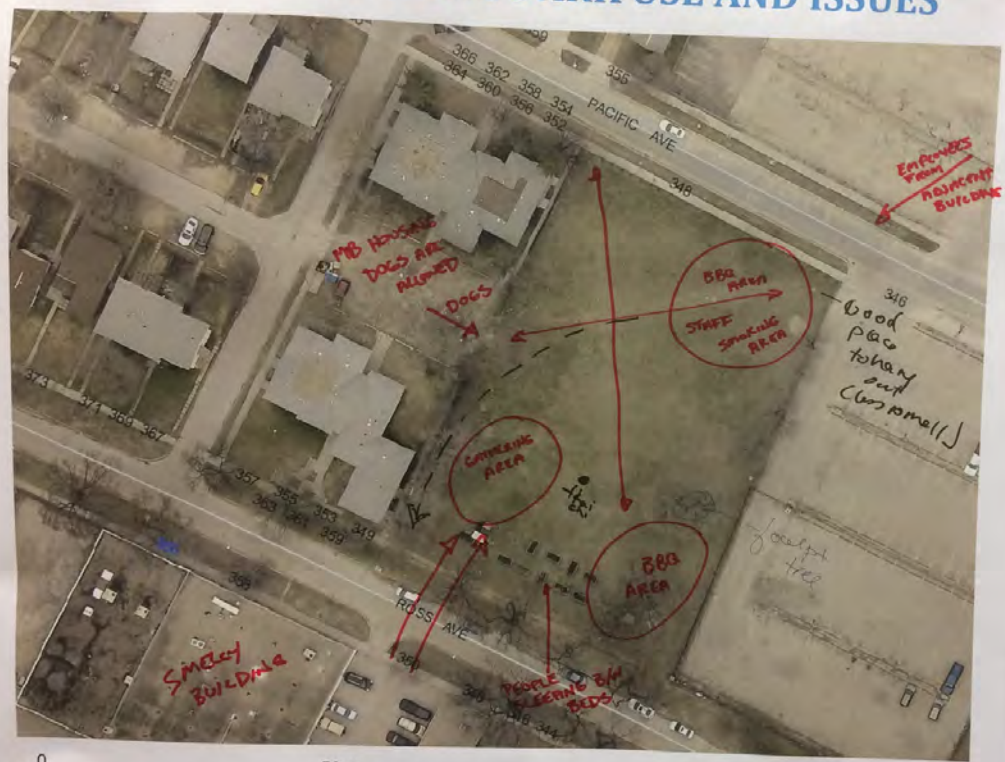
ACTIVITY 1: AREA RECREATION OPTIONS



- 1 Freight House Playground
Outdoor Pool
Skate Park
Basketball Courts
Baseball Fields
Splash Pad
- 2 Roosevelt Park Playground
- 3 Dufferin and Isabel Park Sports Fields
- 4 North Logan Park Sitting Areas
Playgrounds
- 5 Pacific Avenue Tot Lot
- 6 Ross Ellen Playground Playground
- 7 Ellen and Pacific Tot Lot
- 8 Lizzie Playground Playground
Wading Pool
- 9 Chinese Gardens Sitting Areas
- 10 Stephen Juba Park Walking Paths
Sitting Areas
- 11 Old Market Square Public Events
Sitting Areas
Stage
- 12 Central Park Playground
Wading Pool
Sports Field
Splash Pad
- 13 Spence Tot Lot Playground

School Greenspace

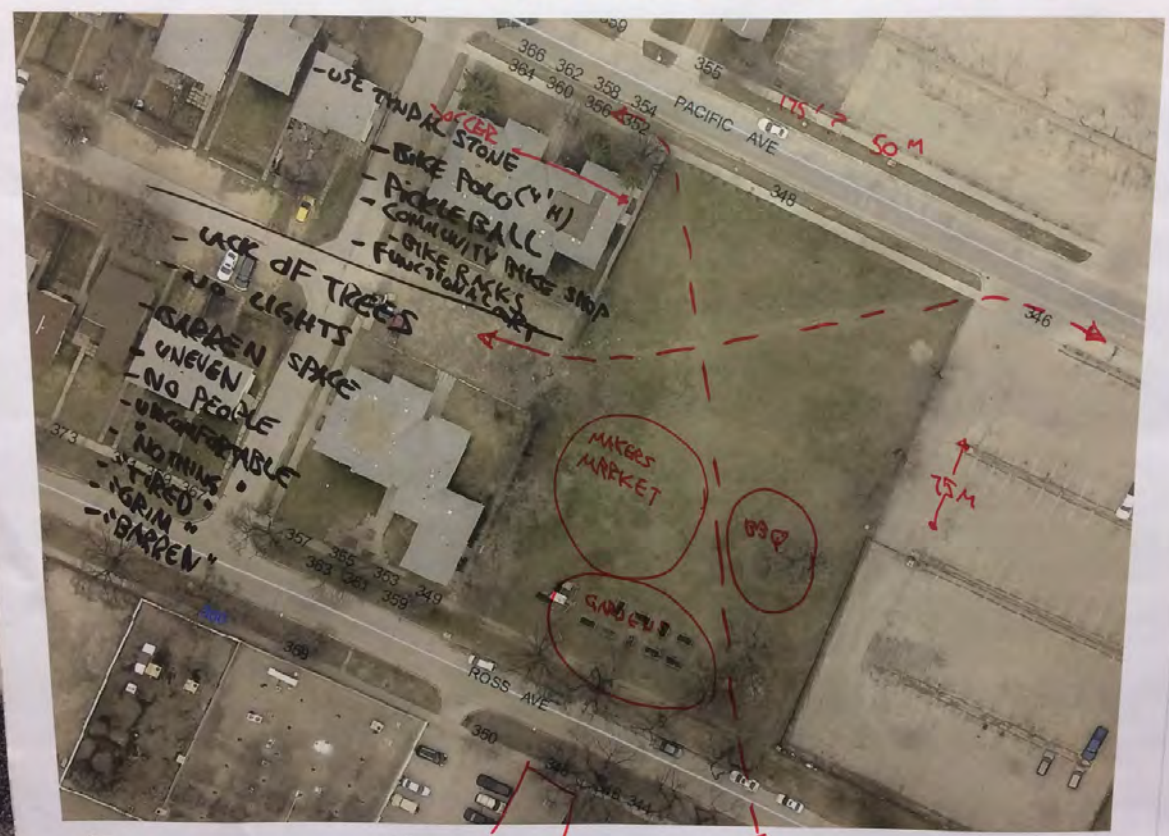
ACTIVITY 2: GORD DONG PARK USE AND ISSUES



- NOTES
- DOGS (SIGNAGE)
 - BAG DISPENSER
 - * GARBAGE CANS
 - TAI CHI
 - APPLICATION NOT ENOUGH TO FILL ALL BEDS
 - COMPOST
 - WATER
 - USERS:
 - DOG WALKERS
 - EMPLOYEES FROM NEARBY BUSINESSES



ACTIVITY 2: GORD DONG PARK USE AND ISSUES



ACTIVITY 3: GORD DONG PARK ENHANCEMENTS



1:250

NOTES

- BIKE RACKS
- MULTI-USE COURT
- FITNESS NODE?
- KEEP DESIRE PATHS
- SITE LINES
- LIGHTING



ACTIVITY 3: GORD DONG PARK ENHANCEMENTS



1:250

NOTES

- GARDEN
- SHELTER
- BBQ
- PIZZA OVEN
- FRUIT TREES
- RASPBERRIES
- BLUEBERRIES
- NATURAL MATTER
- MEDICINE GARDEN
- GARAGE CARS
- GROUP SEATING
- INDIVIDUAL SEAT
- GRANITE BENCH



Appendix H

Exit Survey

Exit Survey

Please take a moment to complete this exit survey and it in before you leave. We appreciate your participation and value your feedback.

1. How did you hear about this workshop? (check all that apply)

- | | | |
|---|---|---|
| <input type="checkbox"/> Email Invitation | <input type="checkbox"/> Postcard/Mail-drop | <input type="checkbox"/> News Story |
| <input type="checkbox"/> Twitter | <input type="checkbox"/> Facebook | <input type="checkbox"/> City of Winnipeg Website |
| <input type="checkbox"/> Word of Mouth | <input type="checkbox"/> Other: _____ | |

2. I found the information provided at this workshop helpful.

- Strongly Agree Agree Neutral Disagree Strongly Disagree

3. I had an opportunity to share my input on the project and have it documented.

- Strongly Agree Agree Neutral Disagree Strongly Disagree

4. What aspects of the workshop did you like?

5. What aspects of the workshop could be improved?

6. I understand the extent of this project and timeline.

- Strongly Agree Agree Neutral Disagree Strongly Disagree

7. Please rate your level of concern regarding this project.

- High Medium Low No concern

8. Please check all the boxes that best describe you:

- I am a resident in the project area I am a business owner in the project area
 I work in the project area I live/work outside of the project area but
am interested in the project
 I am part of a group/organization with
an interest in the project Other: _____

9. How often do you use the Gord Dong Park per month?

- 1-5 times 6-10 times 10+ times I have never used the Greenway

10. What is your age group?

- Under 18 18 – 24 25 – 40 41 – 60 Over 60

11. What is your primary language?

- English French Other: _____

Thank you for attending this workshop. Your input is important to us, so please remember to hand in your exit survey at the registration desk before you leave.

For more information, please visit: winnipeg.ca/GordDongPark

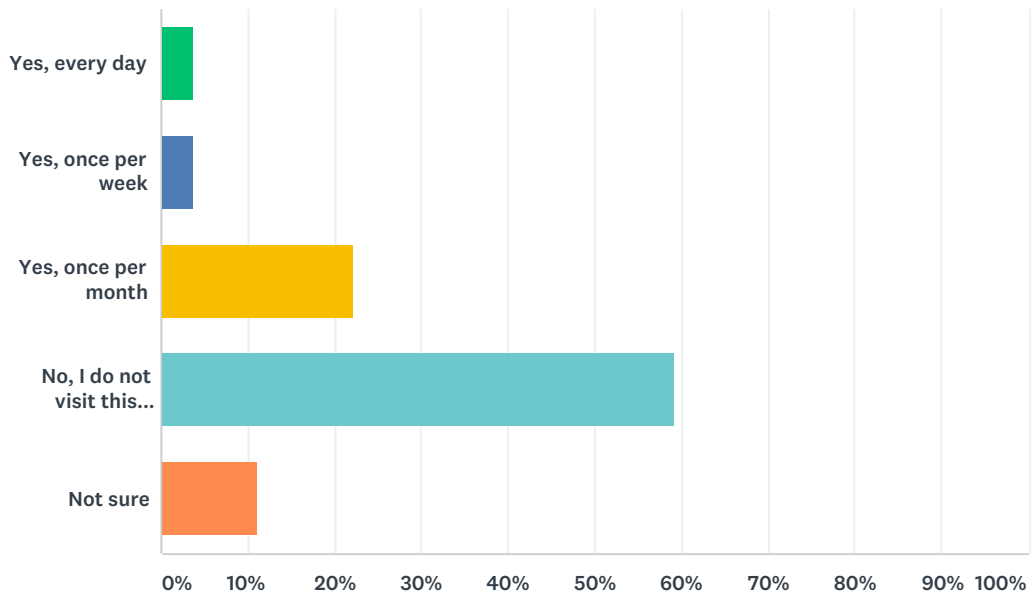
Your personal information is being collected under the authority of 36(1)(b) of The Freedom of Information and Protection of Privacy Act. This information will be used to contact you with project updates if you wish and will not be used or disclosed for any other purposes, except as authorized by law. Your contact information will not be made public. If you have any questions about the collection or use of this information, contact the Corporate FIPPA Coordinator by mail to City Clerk's Department, Administration Building, 510 Main Street, Winnipeg MB, R3B 1B9, or by telephone at 311.

Appendix I

Online Survey Results

Q1 Do you visit the green space along Ross Avenue between Ellen Street and Paulin Street now known as Gord Dong Park?

Answered: 27 Skipped: 0



ANSWER CHOICES	RESPONSES	
Yes, every day	3.70%	1
Yes, once per week	3.70%	1
Yes, once per month	22.22%	6
No, I do not visit this green space	59.26%	16
Not sure	11.11%	3
TOTAL		27

Q2 How do you currently use the park?

Answered: 4 Skipped: 23

#	RESPONSES	DATE
1	walk through	10/22/2017 5:19 PM
2	Community garden. Meeting place for community clean up/barbeque.	10/12/2017 8:17 PM
3	As a nice way to cut between sidewalks on the way to work - public space with trees is always nice.	10/7/2017 9:18 PM
4	Mostly just sit.	9/29/2017 7:25 PM

Q3 What do you like about this park?

Answered: 4 Skipped: 23

#	RESPONSES	DATE
1	I like that it doesn't have a lot of stuff cluttering it up.	10/22/2017 5:19 PM
2	Close to exchange with large footprint.	10/12/2017 8:17 PM
3	Adds to number of trees, and it's close to home.	10/7/2017 9:18 PM
4	It's at a place where by the time you get there you are ready to sit for a while.	9/29/2017 7:25 PM

Q4 Are there any park issues that need to be addressed at Gord Dong Park?

Answered: 4 Skipped: 23

#	RESPONSES	DATE
1	Yes, leave it the way it is, and certainly do not put a bench around the tree. People like to sit and lean on the trunk and read, a bench would ruin that.	10/22/2017 5:19 PM
2	Irresponsible dog owners not cleaning their dog droppings.	10/12/2017 8:17 PM
3	Maybe we could get more use out of it - size is good for small ice rink for winter, paved rink would lend itself to multiple use -- basketball, pickle ball, bike polo in summer	10/7/2017 9:18 PM
4	None	9/29/2017 7:25 PM

Q5 What outdoor activities would you like to see added to the area?

Answered: 16 Skipped: 11

#	RESPONSES	DATE
1	None	10/22/2017 5:23 PM
2	Bike Polo, pickle ball, ball hockey and basket ball	10/19/2017 5:08 PM
3	Fitness track. Podium with shelter	10/12/2017 8:23 PM
4	Bicycle polo, basketball, ice skating	10/11/2017 9:54 AM
5	Sports, gardening, gathering	10/10/2017 11:30 AM
6	Hardcourt bike polo - played on courts that can easily be used for skating/hockey in winter. Also could be used for basketball, pickle ball and ball hockey in summer.	10/7/2017 9:32 PM
7	Bike Polo!, Skating!, Basketball!	10/6/2017 4:20 PM
8	None	10/6/2017 4:07 PM
9	picnic area, play structure, cycle and walking paths, outdoor art gallery or installation area.	10/5/2017 1:56 PM
10	a dog park, activities for kids	10/5/2017 1:32 PM
11	Festivals, music, lawn bowling, ultimate frisbee	10/5/2017 1:22 PM
12	Soccer field!	9/30/2017 6:25 PM
13	None more benches, cheap benches	9/29/2017 7:37 PM
14	BBQ's, community gardens, seasonal skating rink, basketball hoops, beach volleyball court, table tennis outdoor - concrete tables done in Europe	9/27/2017 1:59 PM
15	A safe shaded space for children to climb and play	9/26/2017 10:36 PM
16	None. The city is broke.	9/26/2017 7:34 PM

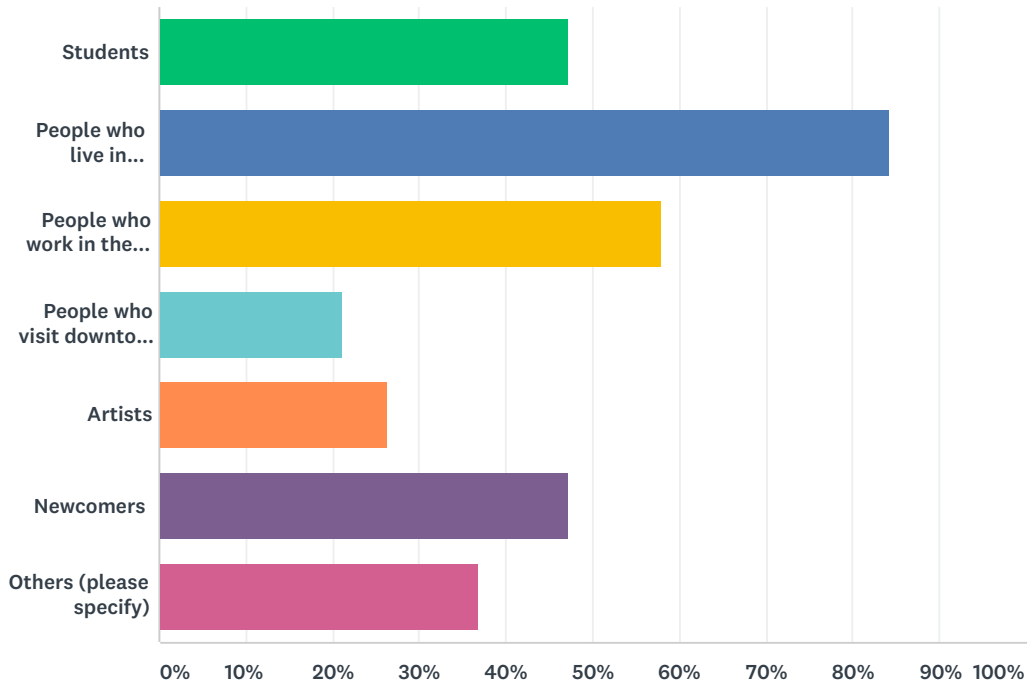
Q6 What outdoor activities would you not like to see in the area?

Answered: 12 Skipped: 15

#	RESPONSES	DATE
1	A bunch of clutter, that prevents kids from running and playing there.	10/22/2017 5:23 PM
2	Tennis	10/19/2017 5:08 PM
3	Basketball, tennis, skateboarding.	10/12/2017 8:23 PM
4	n/a	10/10/2017 11:30 AM
5	Expensive development	10/6/2017 4:07 PM
6	skate park	10/5/2017 1:56 PM
7	needles, garbage, people sleeping, tents	10/5/2017 1:32 PM
8	Drug dealing.	9/30/2017 6:25 PM
9	drug dealers and hookers	9/29/2017 7:37 PM
10	passive greenspace, playground	9/27/2017 1:59 PM
11	Unsure	9/26/2017 10:36 PM
12	Drugs.	9/26/2017 7:34 PM

Q7 Which groups should be considered when redeveloping the park? Please choose all that apply.

Answered: 19 Skipped: 8

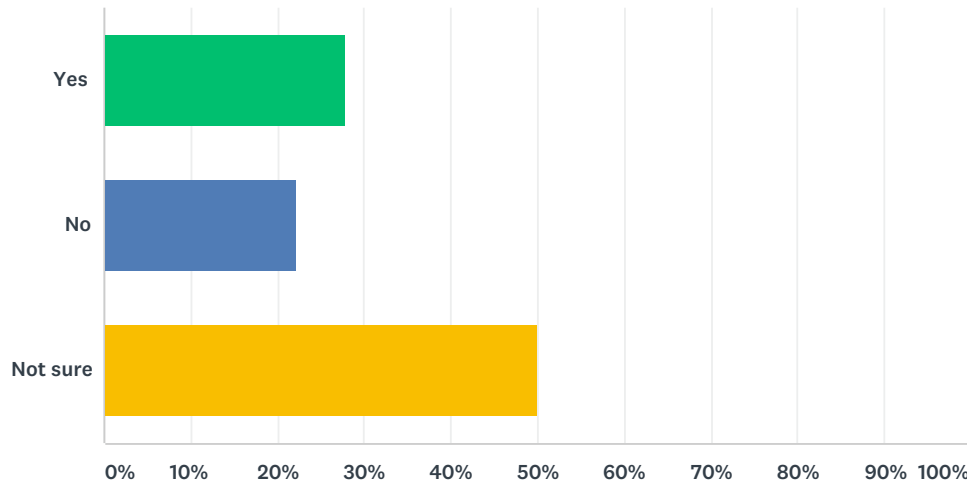


ANSWER CHOICES	RESPONSES
Students	47.37% 9
People who live in surrounding area	84.21% 16
People who work in the area	57.89% 11
People who visit downtown for restaurants and entertainment	21.05% 4
Artists	26.32% 5
Newcomers	47.37% 9
Others (please specify)	36.84% 7
Total Respondents: 19	

#	OTHERS (PLEASE SPECIFY)	DATE
1	People who already use the park.	10/22/2017 5:23 PM
2	city councillors	10/16/2017 9:28 AM
3	People who would come to the area for park activities	10/11/2017 9:54 AM
4	Community sporting groups aiming to make use of new facilities.	10/7/2017 9:32 PM
5	Since this is a public space the rest of the city should be apprised of this "redevelopment" as they will be paying for it.	9/29/2017 7:37 PM
6	Children	9/26/2017 10:36 PM
7	Taxpayers	9/26/2017 7:34 PM

Q8 There are currently several community garden boxes on the south side of this park. If additional garden boxes were made available in the park, do you think they would be used?

Answered: 18 Skipped: 9



ANSWER CHOICES	RESPONSES	
Yes	27.78%	5
No	22.22%	4
Not sure	50.00%	9
TOTAL		18

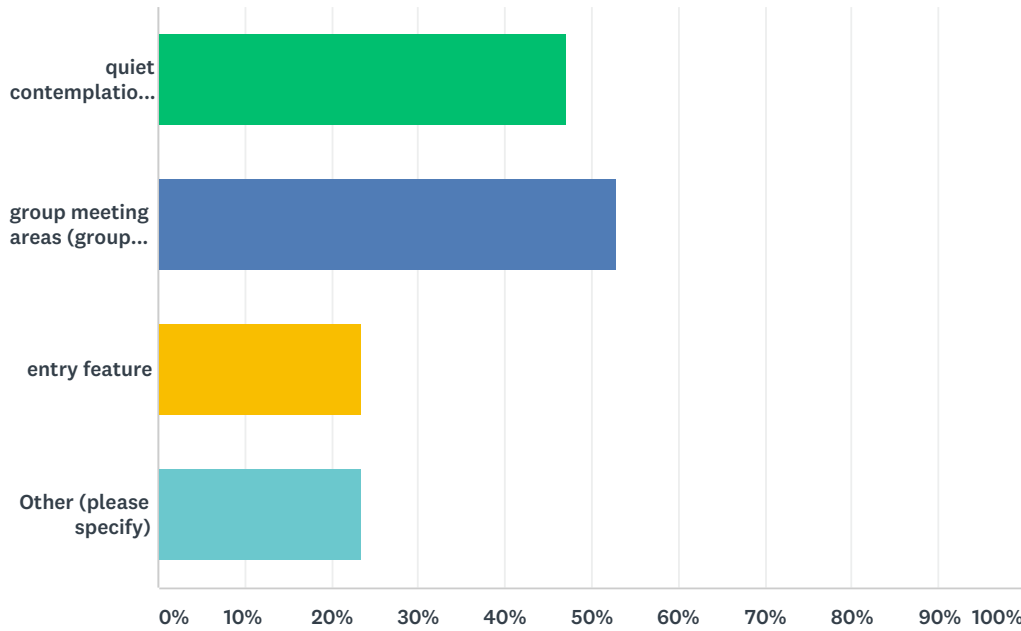
Q9 Do you have any suggestions for improving the community gardens in this park?

Answered: 13 Skipped: 14

#	RESPONSES	DATE
1	A water source, possibly. A cheap water source.	10/22/2017 5:23 PM
2	Not my area of expertise	10/19/2017 5:08 PM
3	YES, Make sure you have a city councillor that cares,we developed McGowan park, it took many many years,it was completed around 2003,we are now missing benches ,tables,playground equipment,Ross Eadie said he would not replace it because it will just get stolen again.	10/16/2017 9:28 AM
4	Need a water source.	10/12/2017 8:23 PM
5	Attract more people, especially in the evenings, to liven up the neighborhood	10/10/2017 11:30 AM
6	People shouldn't steal from gardens.	10/6/2017 4:07 PM
7	gardens need water and a mix of sun and shade. Some plants need no shade and some plants need lots of shade	10/5/2017 1:56 PM
8	community programming	10/5/2017 1:32 PM
9	Higher police presence on foot. Not rolling by in their cars	9/30/2017 6:25 PM
10	Is there a water arrangement where a hose could be attached to water the gardens. Do you charge to have a garden or can we just plant and harvest. There should be no charge. If you want to feed the poor here's your chance. This after ALL the streets have been repaired. And not all in the same 6 months, what were you thinking. You can't go anywhere in this city.	9/29/2017 7:37 PM
11	accessible planting beds raised, rainwater collection system, trellises,	9/27/2017 1:59 PM
12	No suggestions	9/26/2017 10:36 PM
13	Stop wasting money.	9/26/2017 7:34 PM

Q10 What types of resting features would you like to see added to the park?

Answered: 17 Skipped: 10

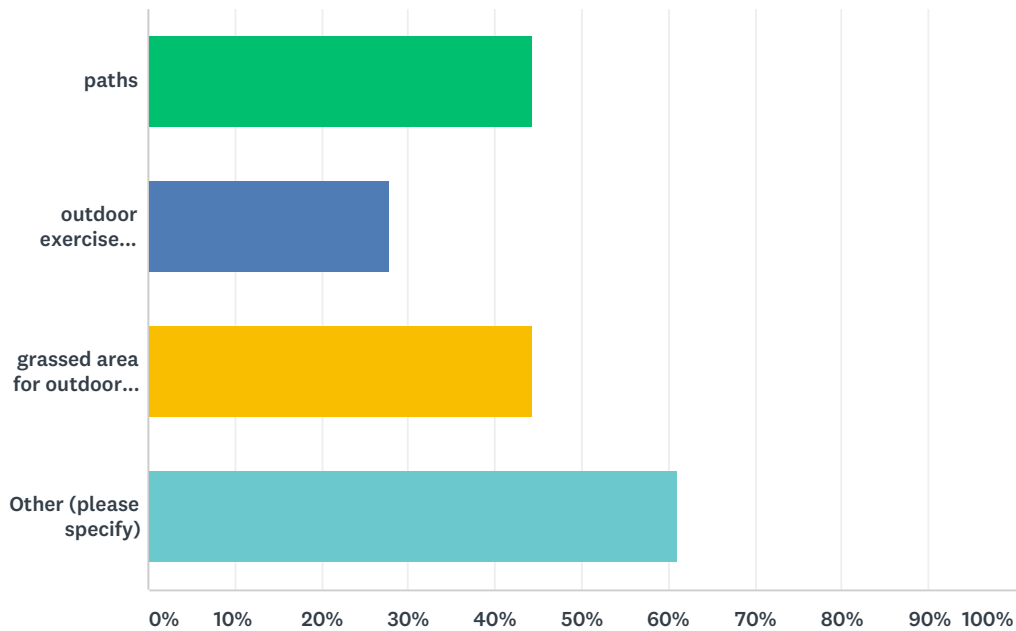


ANSWER CHOICES	RESPONSES
quiet contemplation/ reading areas (single benches)	47.06% 8
group meeting areas (groups of benches/ picnic tables)	52.94% 9
entry feature	23.53% 4
Other (please specify)	23.53% 4
Total Respondents: 17	

#	OTHER (PLEASE SPECIFY)	DATE
1	No wasteful entry feature. Possibly a bench on the perimeter. A cheap bench.	10/22/2017 5:23 PM
2	bathroom	10/5/2017 1:56 PM
3	Group benches, no picnic tables, some single benches but inexpensive ones and only after ALL the streets have been repaired	9/29/2017 7:37 PM
4	None. The city is broke.	9/26/2017 7:34 PM

Q11 What type of active amenities would you like to see added to the park?

Answered: 18 Skipped: 9

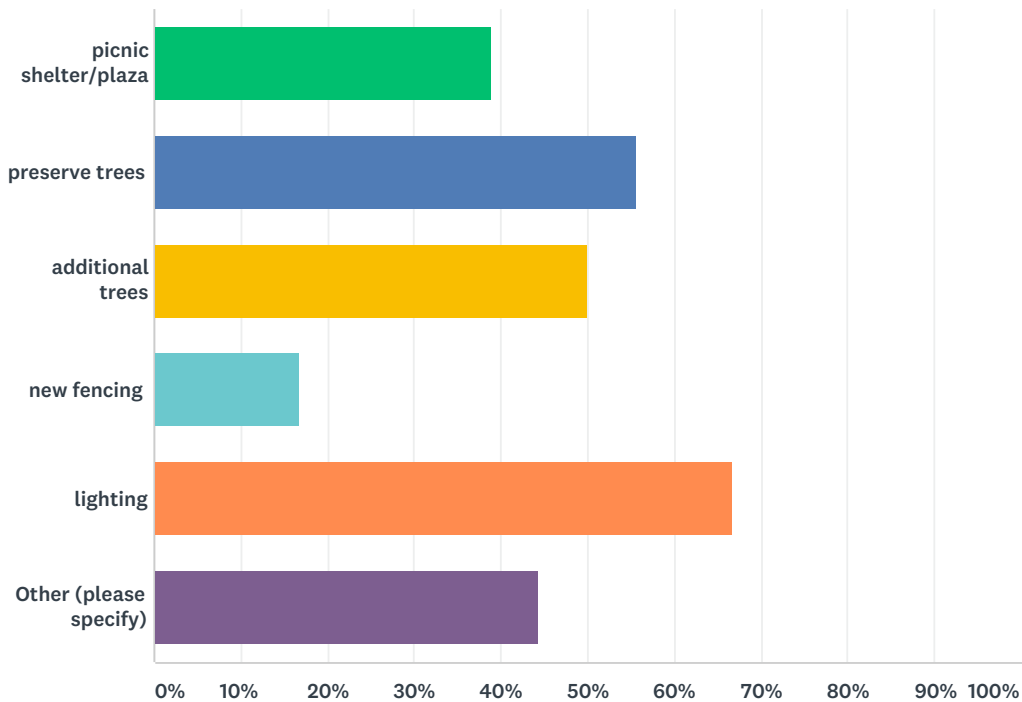


ANSWER CHOICES	RESPONSES	
paths	44.44%	8
outdoor exercise equipment	27.78%	5
grassed area for outdoor sport	44.44%	8
Other (please specify)	61.11%	11
Total Respondents: 18		

#	OTHER (PLEASE SPECIFY)	DATE
1	None	10/22/2017 5:23 PM
2	A fenced hard court for bicycle polo and basketball	10/11/2017 9:54 AM
3	Multiple use rink.	10/7/2017 9:32 PM
4	Sports courts to encourage outdoor activities	10/6/2017 4:20 PM
5	None. Keep it simple.	10/6/2017 4:07 PM
6	bathroom	10/5/2017 1:56 PM
7	off-leash area	10/5/2017 1:32 PM
8	No more amenities, just cheap benches. Sturdy cheap benches. And only if we can afford it. This isn't the type of thing you go into debt over.	9/29/2017 7:37 PM
9	skating rink	9/27/2017 1:59 PM
10	Natural playground	9/26/2017 10:36 PM
11	None. The city is broke.	9/26/2017 7:34 PM

Q12 What type of landscape features would you like to see added to the park?

Answered: 18 Skipped: 9

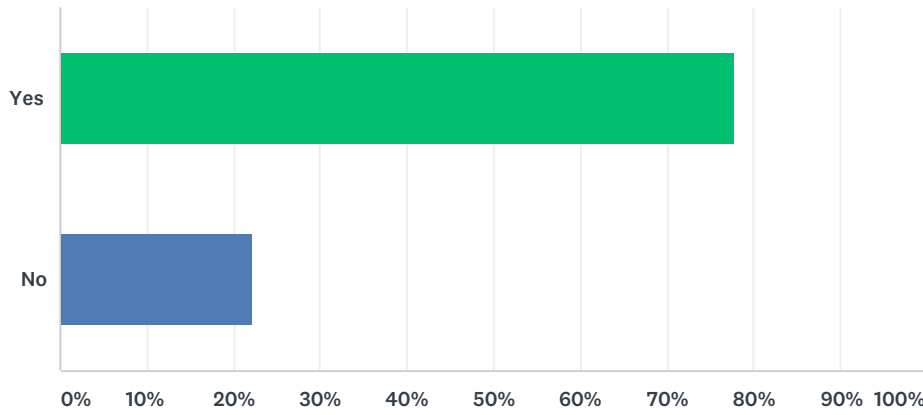


ANSWER CHOICES	RESPONSES
picnic shelter/plaza	38.89% 7
preserve trees	55.56% 10
additional trees	50.00% 9
new fencing	16.67% 3
lighting	66.67% 12
Other (please specify)	44.44% 8
Total Respondents: 18	

#	OTHER (PLEASE SPECIFY)	DATE
1	None	10/22/2017 5:23 PM
2	Fruit trees and bushes. Traditional aboriginal medicines (sage, sweetgrass, etc.)	10/12/2017 8:23 PM
3	None. Keep it simple.	10/6/2017 4:07 PM
4	hills, fruit trees, flowers (perennial - so they bloom on their own every year - to help bees!	10/5/2017 1:56 PM
5	Keep what we have and just keep it clean. You don't have to cover every inch with some toy like you are doing with city park. You are ruining city park don't do the same thing with this park.	9/29/2017 7:37 PM
6	landform artwork	9/27/2017 1:59 PM
7	Climbing rocks	9/26/2017 10:36 PM
8	None. The city is broke	9/26/2017 7:34 PM

Q13 Would you like to see art added to the park?

Answered: 18 Skipped: 9



ANSWER CHOICES	RESPONSES	
Yes	77.78%	14
No	22.22%	4
TOTAL		18

Q14 If yes, are there any themes you would like to explore through art?

Answered: 10 Skipped: 17

#	RESPONSES	DATE
1	NO	10/22/2017 5:23 PM
2	Community and history.	10/19/2017 5:08 PM
3	Long-term history of the spot and surrounding area.	10/7/2017 9:32 PM
4	History of Manitoba	10/6/2017 4:20 PM
5	community, empathy, compassion, understanding through communication	10/5/2017 1:56 PM
6	contemporary art - it could become 'the' contemporary art park in winnipeg	10/5/2017 1:32 PM
7	Not aboriginal focused. A giant maple leaf fountain.	9/30/2017 6:25 PM
8	themes should be community driven - community working with artist - WITHART Program - Winnipeg Arts Council	9/27/2017 1:59 PM
9	Nature, community, peace, unity,	9/26/2017 10:36 PM
10	City of Winnipeg corruption.	9/26/2017 7:34 PM

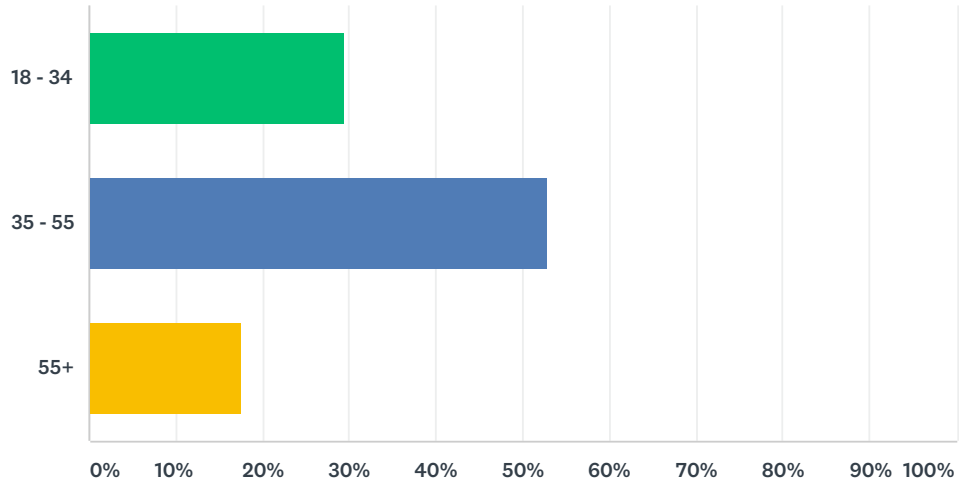
Q15 Do you have anything else you would like to add?

Answered: 8 Skipped: 19

#	RESPONSES	DATE
1	It would be nice if the City of Winnipeg could just keep it's paws off areas where people are already enjoying themselves, just to spend, spend, spend.	10/22/2017 5:23 PM
2	Bike polo is a fast growing sport across the globe. It would grow in Winnipeg if we had an appropriate facility.	10/19/2017 5:08 PM
3	Try to make it theft prove, make sure any equipment is bolted down and or too heavy to move,try to make it so that a vehicle can not enter (a locked gate) have electrical power available to the public (lock it up) with power you can have parties and the like with bouncy castle and other stuff without having to drag a generator around, do not landscape with bushes ,people will camp there and the city will eventually cut them out, if room permits put in an off leash area, have a group adopt the park so they can do stuff without jumping through the city's hoops.Have a nice day.	10/16/2017 9:28 AM
4	Make it accessible and friendly and safe.	10/12/2017 8:23 PM
5	Be financially responsible.	10/6/2017 4:07 PM
6	No thanks.	9/30/2017 6:25 PM
7	Yes, can we afford this? I would like to say that it is ludicrous that you are trying to fix all the streets in the last 6 months before election year. This should have been done on an ongoing basis. The city of Winnipeg is run by a crazy person.	9/29/2017 7:37 PM
8	Why was there such failure to involve the neighborhood on the Garden City Teakwood and Primrose parks?	9/26/2017 7:34 PM

Q16 What is your age?

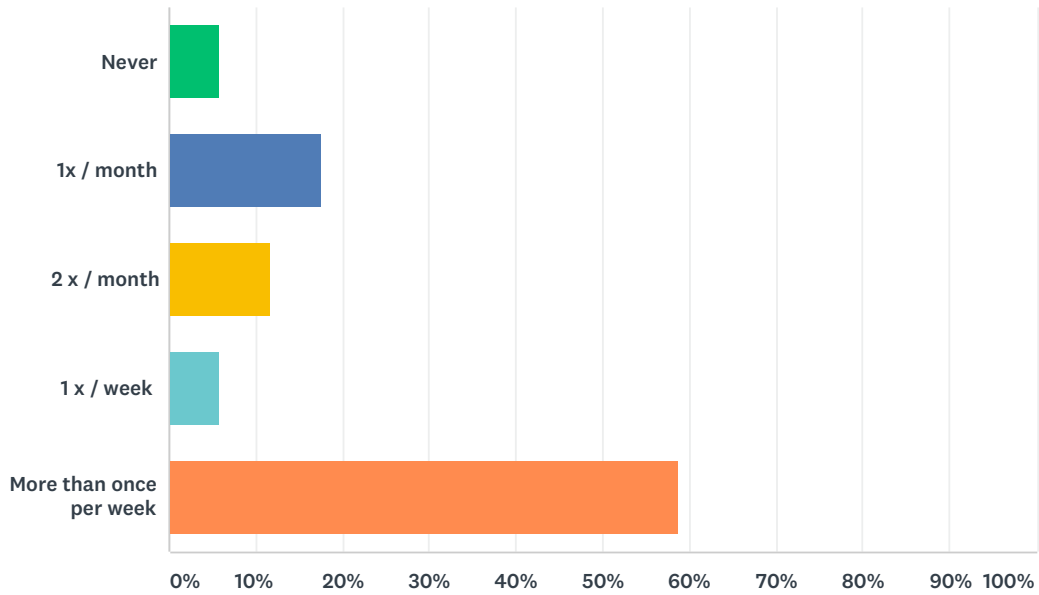
Answered: 17 Skipped: 10



ANSWER CHOICES	RESPONSES
18 - 34	29.41% 5
35 - 55	52.94% 9
55+	17.65% 3
TOTAL	17

Q17 How often are you within close proximity to Gord Dong Park?

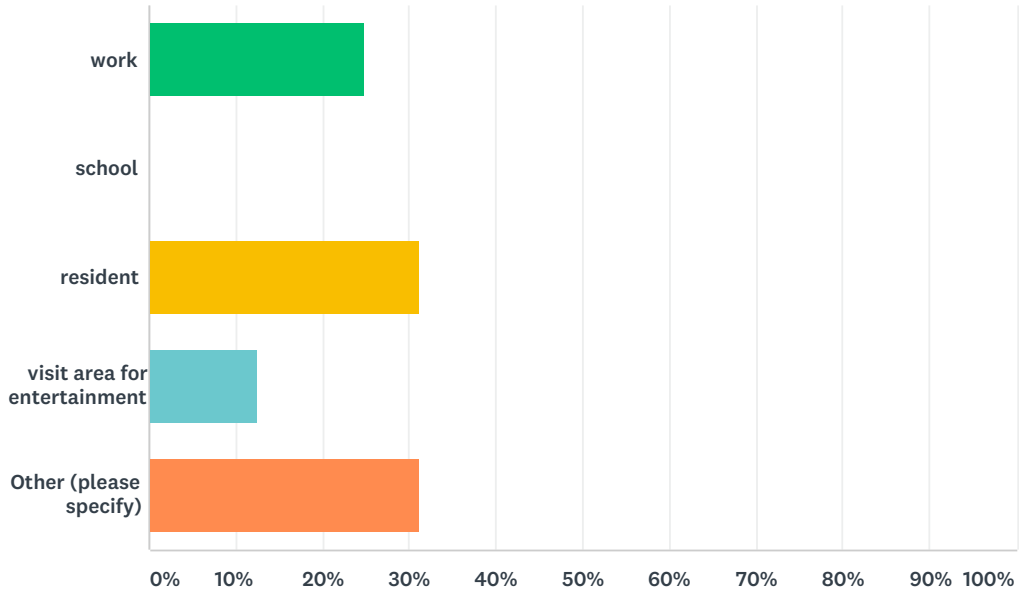
Answered: 17 Skipped: 10



ANSWER CHOICES	RESPONSES	
Never	5.88%	1
1x / month	17.65%	3
2 x / month	11.76%	2
1 x / week	5.88%	1
More than once per week	58.82%	10
TOTAL		17

Q18 What best describes the reason why you come near the park?

Answered: 16 Skipped: 11

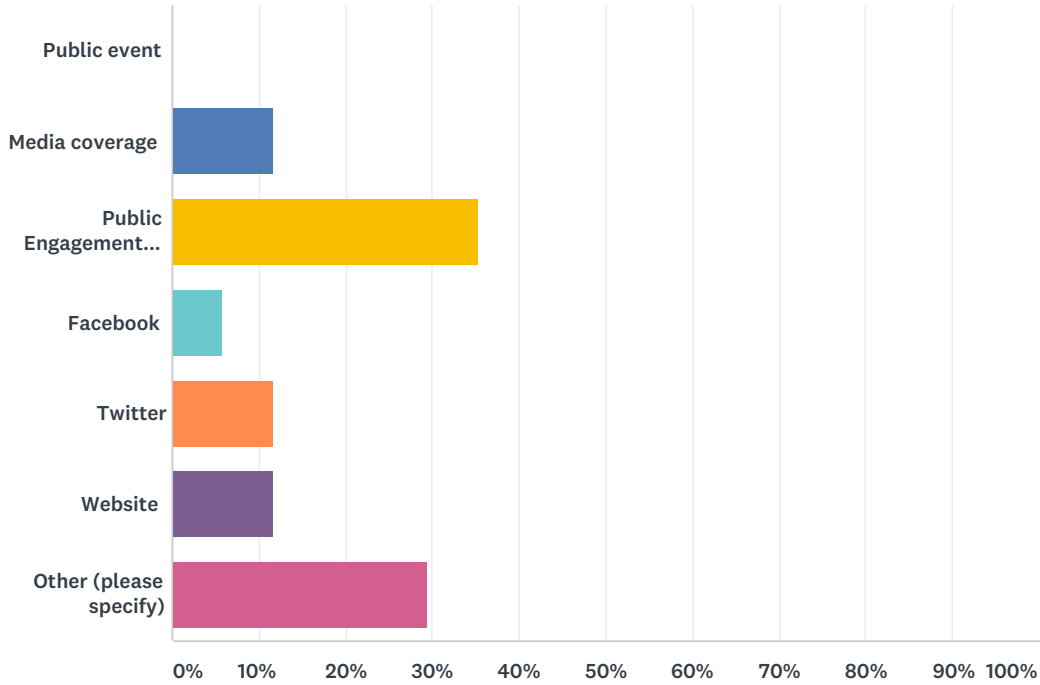


ANSWER CHOICES	RESPONSES	
work	25.00%	4
school	0.00%	0
resident	31.25%	5
visit area for entertainment	12.50%	2
Other (please specify)	31.25%	5
TOTAL		16

#	OTHER (PLEASE SPECIFY)	DATE
1	use it for access and to sit under the tree and read at lunch	10/22/2017 5:25 PM
2	cycling from one location to another	10/5/2017 1:57 PM
3	Baby Mama's Crib	9/30/2017 6:26 PM
4	visit the area for entertainment and school	9/29/2017 7:39 PM
5	I don't.	9/26/2017 7:35 PM

Q19 How did you hear about this project? Please check all that apply.

Answered: 17 Skipped: 10



ANSWER CHOICES	RESPONSES	
Public event	0.00%	0
Media coverage	11.76%	2
Public Engagement Newsletter	35.29%	6
Facebook	5.88%	1
Twitter	11.76%	2
Website	11.76%	2
Other (please specify)	29.41%	5
Total Respondents: 17		

#	OTHER (PLEASE SPECIFY)	DATE
1	A friend	10/19/2017 5:09 PM
2	Contacted by city Councillor.	10/12/2017 8:24 PM
3	Friends	10/11/2017 9:57 AM
4	Sports club	10/10/2017 11:32 AM
5	none	10/6/2017 4:08 PM

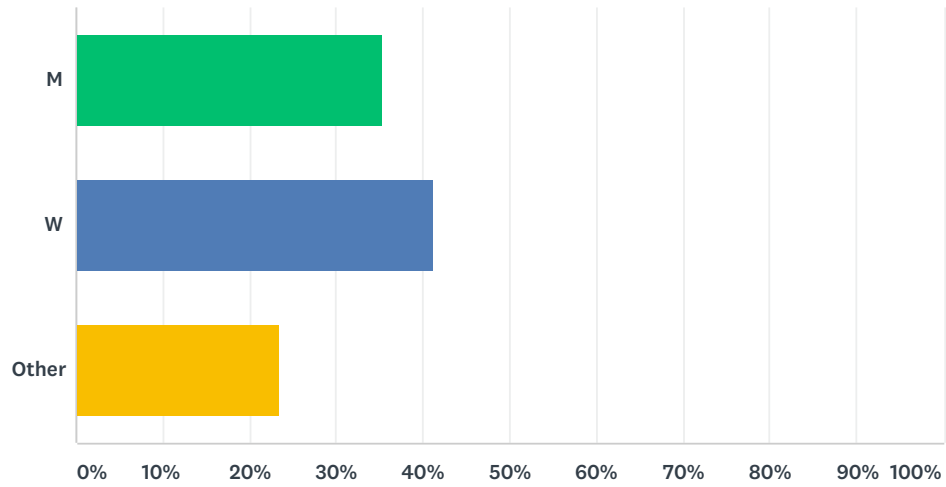
Q20 Please provide the first three characters of your postal code.

Answered: 16 Skipped: 11

#	RESPONSES	DATE
1	R3J	10/22/2017 5:25 PM
2	R3k	10/22/2017 12:58 PM
3	R3B	10/19/2017 5:09 PM
4	R3A	10/12/2017 8:24 PM
5	R3B	10/11/2017 9:57 AM
6	r2h	10/10/2017 11:32 AM
7	R3B	10/7/2017 9:33 PM
8	R3B	10/6/2017 4:21 PM
9	R2M	10/6/2017 4:08 PM
10	R3L	10/5/2017 3:41 PM
11	R3E	10/5/2017 1:57 PM
12	R3B	10/5/2017 1:32 PM
13	r3l	10/5/2017 1:22 PM
14	R3J	9/29/2017 7:39 PM
15	R1A	9/26/2017 10:39 PM
16	R2V	9/26/2017 7:35 PM

Q21 Please indicate your gender.

Answered: 17 Skipped: 10



ANSWER CHOICES	RESPONSES
M	35.29% 6
W	41.18% 7
Other	23.53% 4
TOTAL	17

#	OTHER	DATE
1	I don't know	10/10/2017 11:32 AM
2	Hipster	10/6/2017 4:08 PM
3	5th dimensional being.	9/30/2017 6:26 PM
4	Yes.	9/26/2017 7:35 PM