

Towards a Winnipeg Food Policy Council

May 30 and June 2, 2016

City of Winnipeg and Food Matters Manitoba



Outline

- Welcome and Introductions
- Formation and Governance
- Roles and Priority areas
- Next Steps



Welcome and Introduction

- What we want to learn from you
- Bathrooms
- Meeting preparation materials
- Introductions



Why we're here: Winnipeg Context

How can we create an effective Winnipeg Food Policy Council that uses existing municipal structures to respond to local food-related issues?



What is a Food Policy Council?

- Works within existing political processes
- Provides a forum to discuss issues
- Coordinates between sectors
- Researches, evaluates and influences policy
- Supports programs and services that address local needs

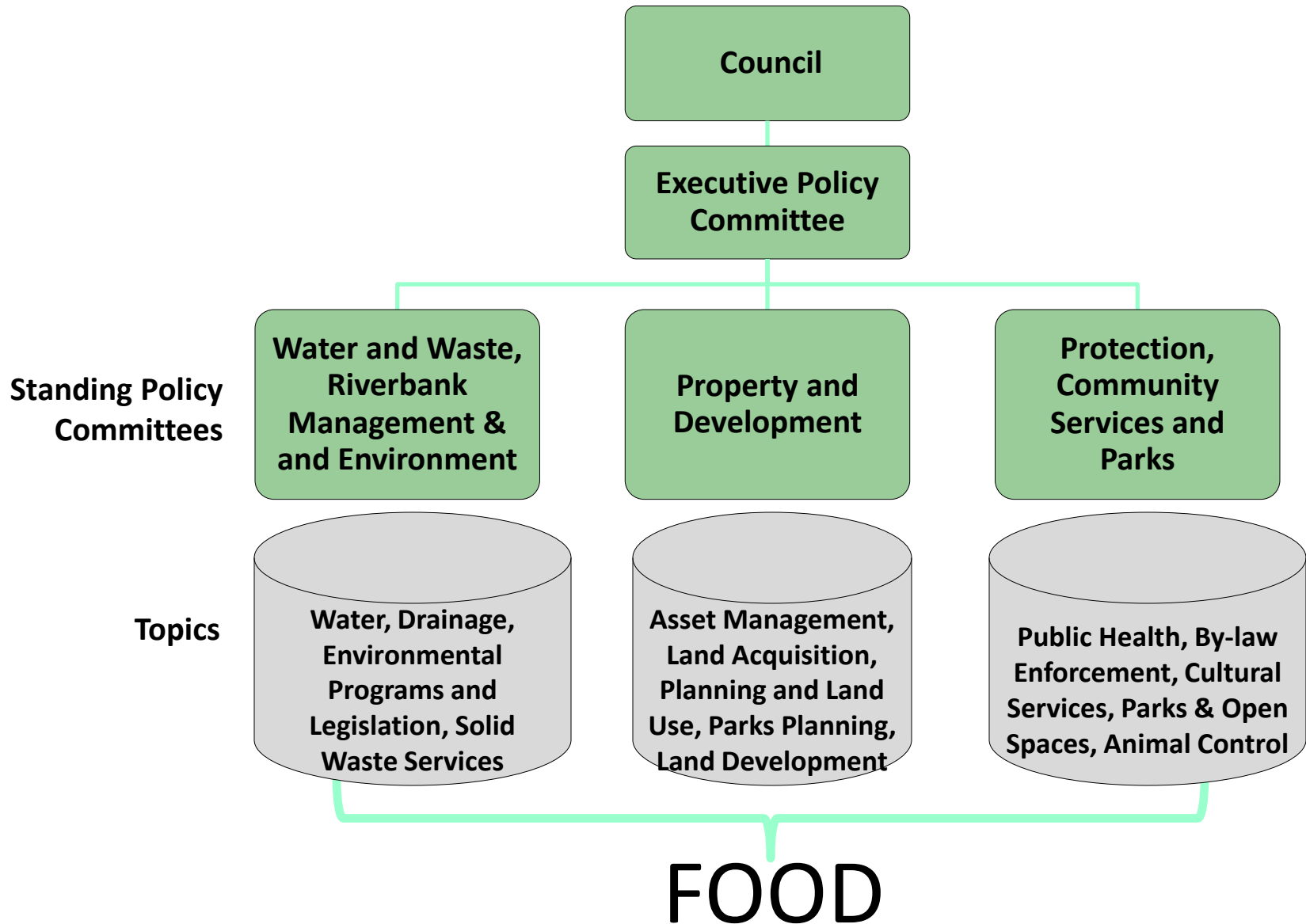


Formation and Governance

- Successful food councils have:
 - Well-structured access to Municipal Council
 - Reliable financing
 - Staff and other supports

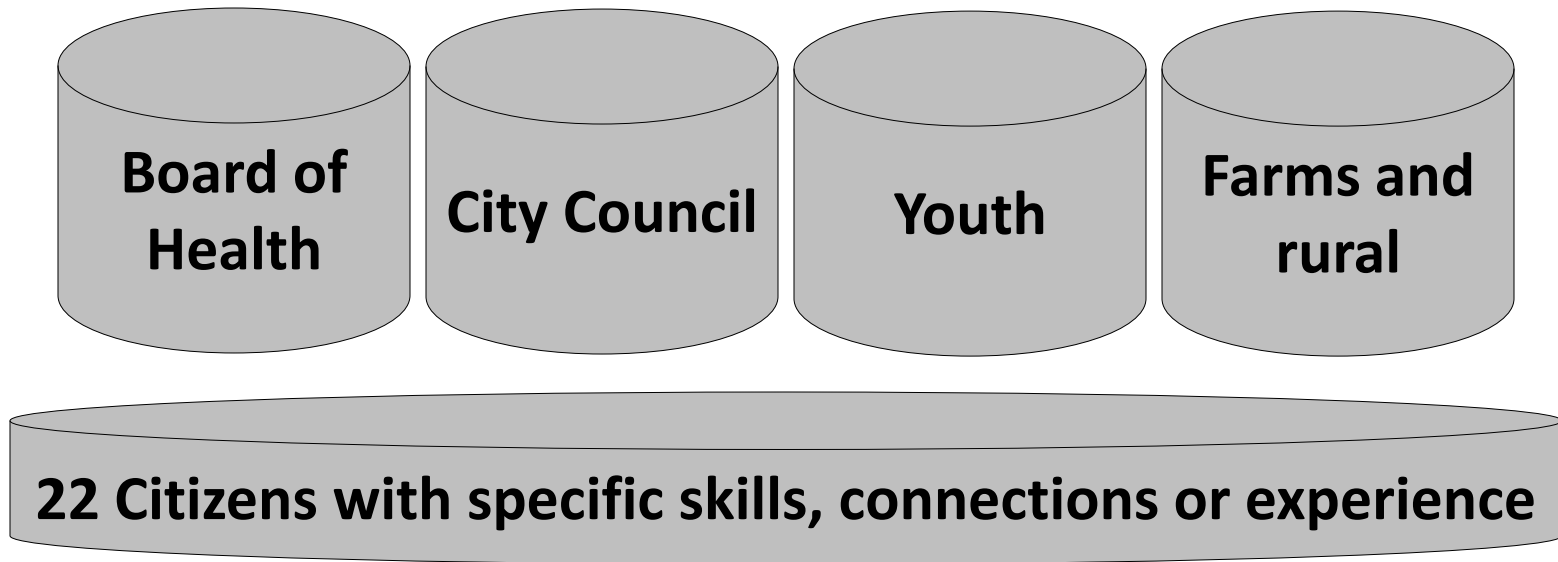


Formation and Governance



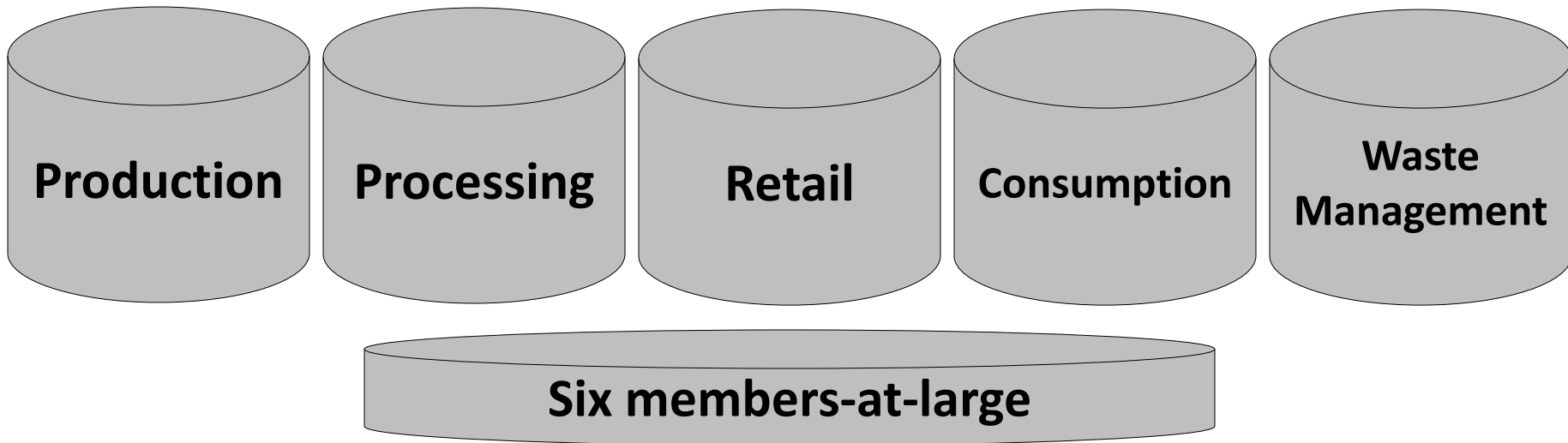
Formation and Governance

- Toronto



Formation and Governance

- Vancouver



Formation and Governance

- Edmonton

Production

Processing

Distribution

Buying and Selling

Eating and celebrating

Waste and recovery

Education

Government

Citizens and eaters

Various demographics

Members-at-large as needed

Formation and Governance

Access Advisory Committee (Ad Hoc)

Advises Mayor and Council on Accessibility issues

14 Members

- Mayor (ex-officio)
- 2 Councillors
- 1 Provincial rep
- 8 members with disabilities
- 2 citizens-at-large

Reports to:

EPC

Chair

Councillor
(elected)

Terms

2 year rotating for
citizen members

Resources/ Supports

Budget
Staff

City Clerk,
City Liaison

Formation and Governance

Assiniboine Park Conservancy (Board of Directors)

leads, manages, fund-raises, develops Assiniboine Park through a Management Agreement with City of Winnipeg

Members

- Originally 14, now 16 members

Reports to:

Council

Chair

Citizen

Terms

1 year

Resources/ Supports

Budget from fundraising?

City Clerk

Formation and Governance

Urban Design Advisory Committee (Advisory)

Recommends on whether to approve certain development applications

12 Members

- Chair
- 3 Architects
- 3 Landscape Architects
- 1 Planner
- 1 Dev't Industry
- 1 CentreVenture
- 2 Historical Bldgs Cttee

Reports to:

Director PPD

Chair

Citizen

Terms

2 year alternating

Resources/ Supports

City Clerk

Formation and Governance

Citizen Equity Committee (Ad Hoc)

Monitors policies, Advises on Equity and Diversity issues and trends

11-13 Members

- Mayor (ex-officio)
- 2 Councillors
- CAO or designate
- 7-9 from target group communities

Reports to:

EPC

Chair

Councillor;
Citizen Vice-chair

Terms

2 years for Citizens;
1 year Councillors

Resources/ Supports

Budget
Staff

City Clerk,
City Liaison

Formation and Governance

Winnipeg Committee for Safety (Ad Hoc)

Supports, assists, stimulates & mobilizes work of the Community on safety concerns

11 Members

- Mayor (ex-officio)
- 1 Councillor
- 1 Provincial representative
- 8 citizen members

Reports to:

EPC

Chair

Councillor
(appointed)

Terms

3-year rotating for citizens;
1 year Councillors

Resources/ Supports

Budget
Staff

City Clerk,
City Liaison

Questions/Clarification?

Instructions

- We'll have 15 minutes for discussion at your table based on the reflection questions.
- Please assign a person in your group to take notes. These notes will be compiled at the end of the session.
- There will be time to share back key points with the rest of the group.

Formation - Discussion

- There are different models that could be used: broad representation (like Toronto), representation from specific groups (like Edmonton) or somewhere in between (like Vancouver). What do you like about each of these models? What do you feel could be improved?
- What sectors, demographics, or other types of representation (e.g. geography) do you think should be part of a Winnipeg food policy council?
- Do you think specific organizations and/or positions should have a guaranteed place on a Winnipeg food policy council? If so, which ones?

For questions 2-3 think of filling in the “Build Your Own Committee” worksheet as a table

Committee Design

Winnipeg Food Policy Council

TBD

_____ Members

Specific organizational reps?

Specific reps because of their position?

Sectors/demographics
(use reverse side if needed)

Reports to:

Chair(s)

Terms

_____ rotating for
citizens;
_____ Councillors

Resources/
Supports

City Clerk

Role and Priority Areas

- Research
- Programming
- Advisory Support
- Policy Implementation
- Strategy Development

- Coordination and Networking
- Engagement and Education
- Advocacy
- Resourcing and support



Role and **Priority Areas**

- Access and Equity
- Economic Development
- Food Education
- Local and regional food

- Nutrition and public health
- Urban Agriculture
- Waste Management
- Land Use and Long Range Planning



Questions/Clarification?

Instructions

- We have 20 minutes for discussion about roles and priorities – take about 10 minutes each.
- Spend time discussing each topic in your group. Please have a recorder to take notes.
- At the end of the 20 minutes you will have a chance to name the most important roles and priorities. You will receive 3 dots for each category – come to the front and place your dots.
- We'll have some time to share thoughts with the whole group.

Role and Priority Areas - Discussion

- What are the most important roles for a Winnipeg food policy council? (*each person will get to name 3 in the dotmocracy exercise*)
- What priority areas would you see as being key components of a food policy council's mandate in Winnipeg? (*each person will get to name 3 in the dotmocracy exercise*)

Next Steps

Family Farm Report (June 2015)

Commence Research (July 2015)

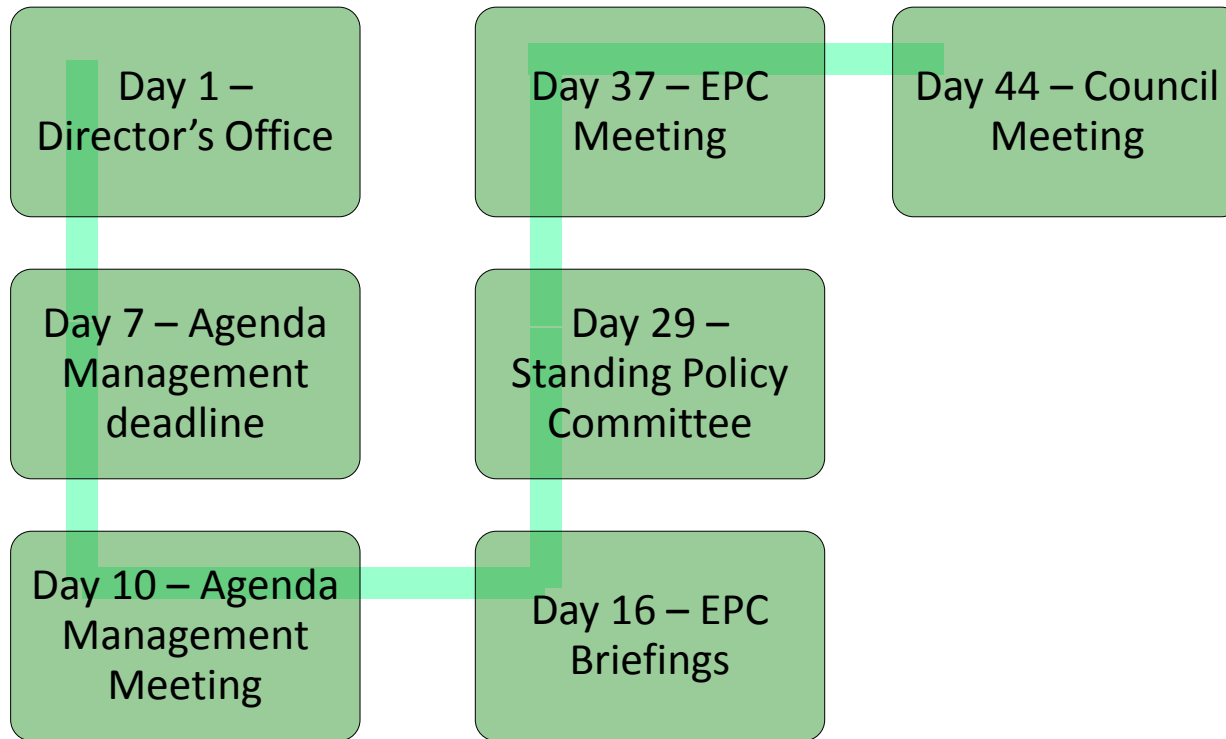
Stakeholder meetings (May-June 2016)

Online feedback, prepare draft report (potentially with draft by-law and Terms of Reference)
(Summer 2016)

Public Event (September 2016)

Prepare and submit final report (and potentially draft by-law and terms of reference (November 2016)

Next Steps



Questionnaire and Evaluation

Thank you!

