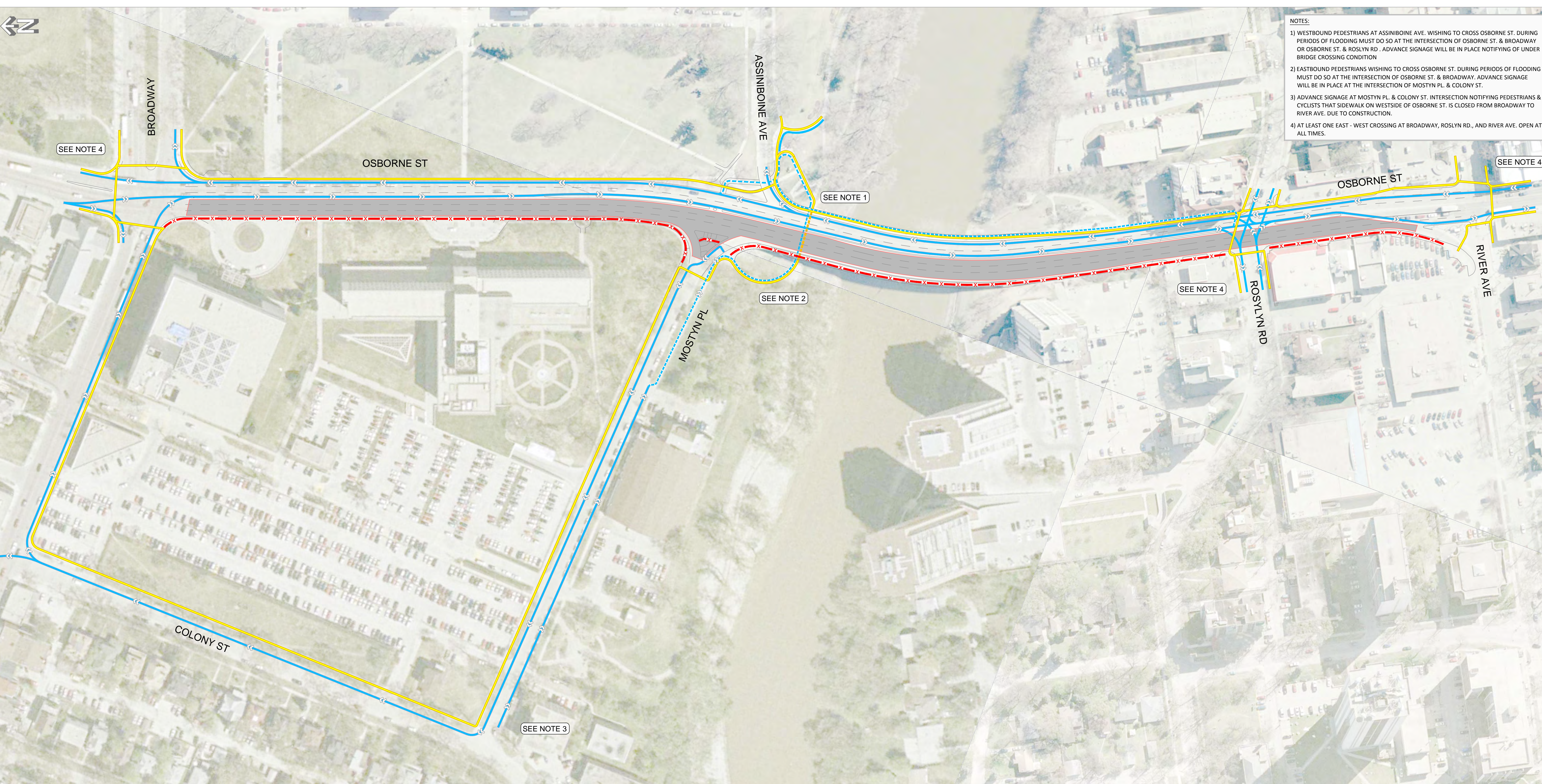




- NOTES:
- 1) WESTBOUND PEDESTRIANS AT ASSINIBOINE AVE. WISHING TO CROSS OSBORNE ST. DURING PERIODS OF FLOODING MUST DO SO AT THE INTERSECTION OF OSBORNE ST. & BROADWAY OR OSBORNE ST. & ROSLYN RD. ADVANCE SIGNAGE WILL BE IN PLACE NOTIFYING OF UNDER BRIDGE CROSSING CONDITION
 - 2) EASTBOUND PEDESTRIANS WISHING TO CROSS OSBORNE ST. DURING PERIODS OF FLOODING MUST DO SO AT THE INTERSECTION OF OSBORNE ST. & BROADWAY. ADVANCE SIGNAGE WILL BE IN PLACE AT THE INTERSECTION OF MOSTYN PL. & COLONY ST.
 - 3) ADVANCE SIGNAGE AT MOSTYN PL. & COLONY ST. INTERSECTION NOTIFYING PEDESTRIANS & CYCLISTS THAT SIDEWALK ON WESTSIDE OF OSBORNE ST. IS CLOSED FROM BROADWAY TO RIVER AVE. DUE TO CONSTRUCTION.
 - 4) AT LEAST ONE EAST - WEST CROSSING AT BROADWAY, ROSLYN RD., AND RIVER AVE. OPEN AT ALL TIMES.



OSBORNE STREET BRIDGE PROJECT
PHASE 2A - STAGE 2 - 2012
Pedestrian and Cyclist Facilities
Late April 2012 to Late June 2012

LEGEND

PEDESTRIANS		CYCLISTS	
UNDER BRIDGE PATHWAY		DISMOUNTED CYCLISTS	
NO PEDESTRIANS / CYCLISTS		CONSTRUCTION AREA	

