

Empress Corridor Design Study Wellington Avenue Improvements

Stakeholder meeting

July 22, 2024

Welcome!

Introductions

Damir Muhurdarević – Project Manager – City of Winnipeg

David Wiebe – Project Manager – Dillon Consulting

Ryan Segal – Stakeholder Engagement – Urban Systems

Meeting purpose

- Share study information
- Help in understanding how your property and property access will be affected by the design and through future construction
- Collect feedback to help us ensure that the proposed improvements align with your property and operational needs

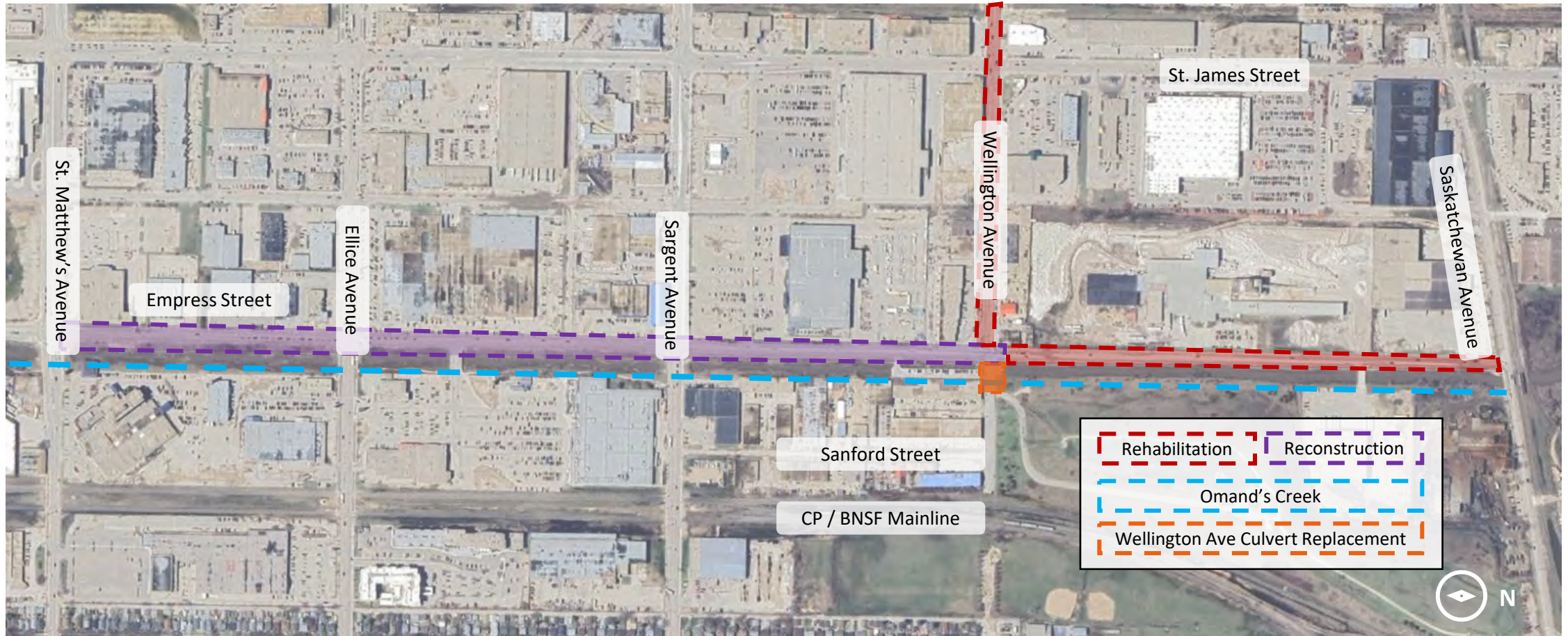
Meeting overview

Presentation

- Introductions and project background
- Conceptual design
- Next steps
- Questions

Review design and discussion with project team

Project area



Project scope

- Preliminary design of Empress corridor from St. Matthews Avenue to Saskatchewan Avenue
- Preliminary design of Wellington Avenue from Empress Street to Berry Street
- Omand's Creek bank stabilization and naturalization
- Pedestrian/cycling facility improvements and connections
- Improved Transit stop facilities
- Culvert replacement (Wellington Avenue)

Background – project timeline



We are here!

*There is currently only funding for the design study. There is no budget or timeline for more detailed planning or construction.

Existing conditions

There is a need for pedestrian & bicycle infrastructure.



Roadway pavements and sidewalks are in poor condition.



Omand's Creek bank stabilization will be required.

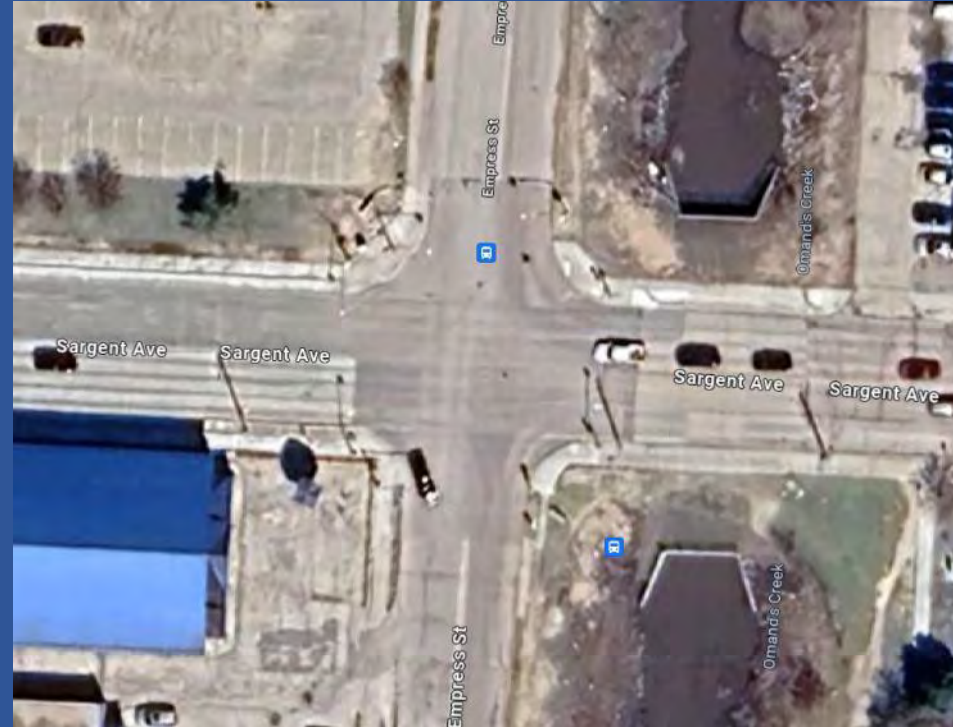


Existing conditions

Vehicle turning and access is challenging in some locations and intersections

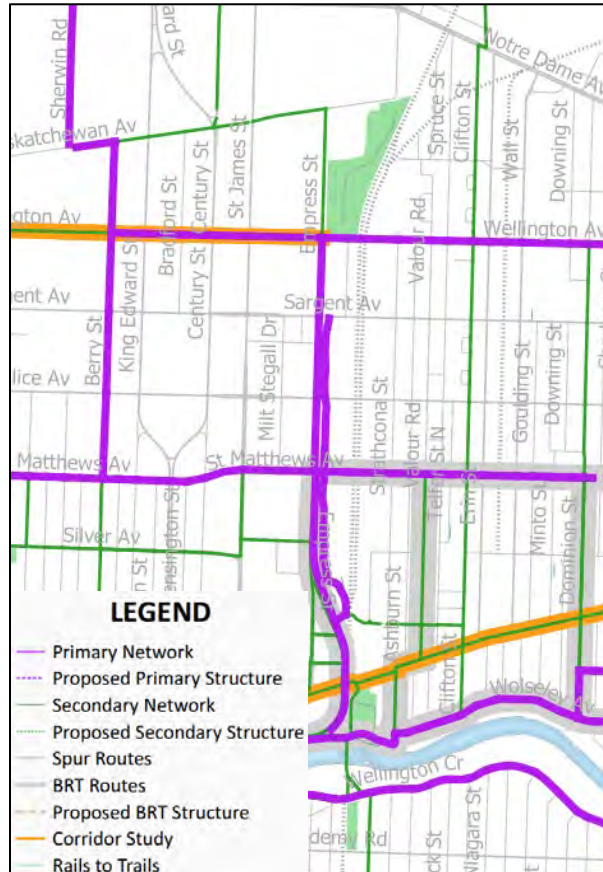


Walmart Entrance



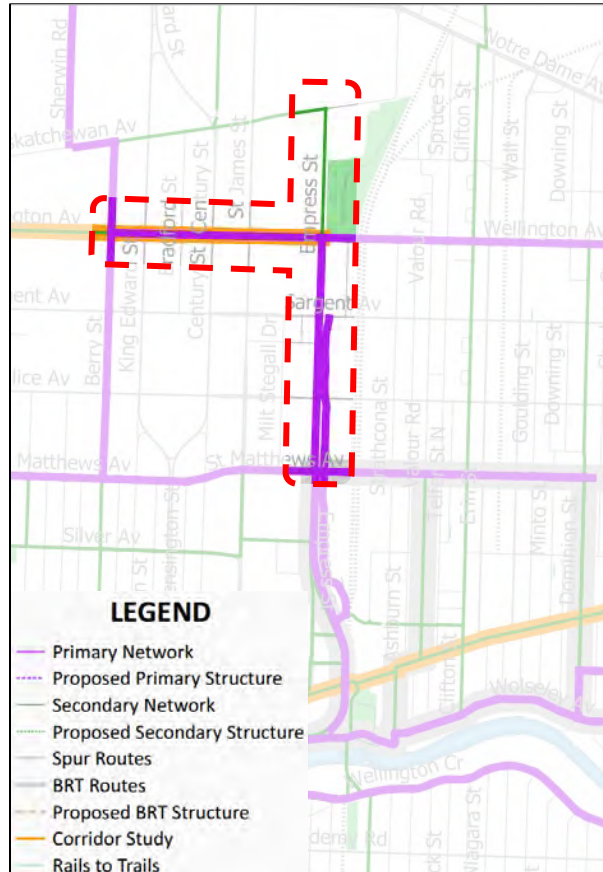
Sargent Avenue

Pedestrian and cycling network



- Identified in the Pedestrian and Cycling Strategies (2015)
- Design:
 - Connect to existing bicycle infrastructure on Empress
 - Connect to Wellington Avenue
 - Wellington Railway crossing – alternate route

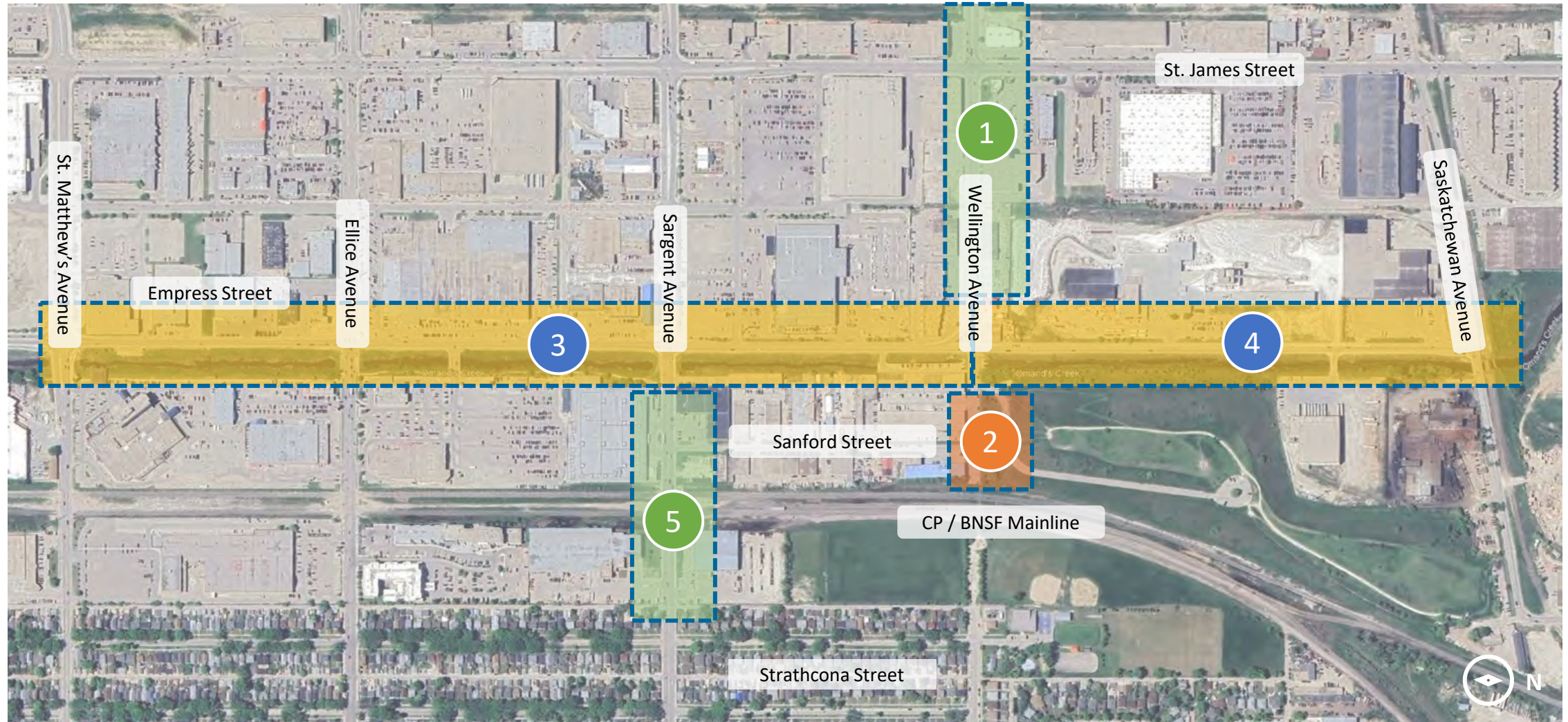
Pedestrian and cycling network



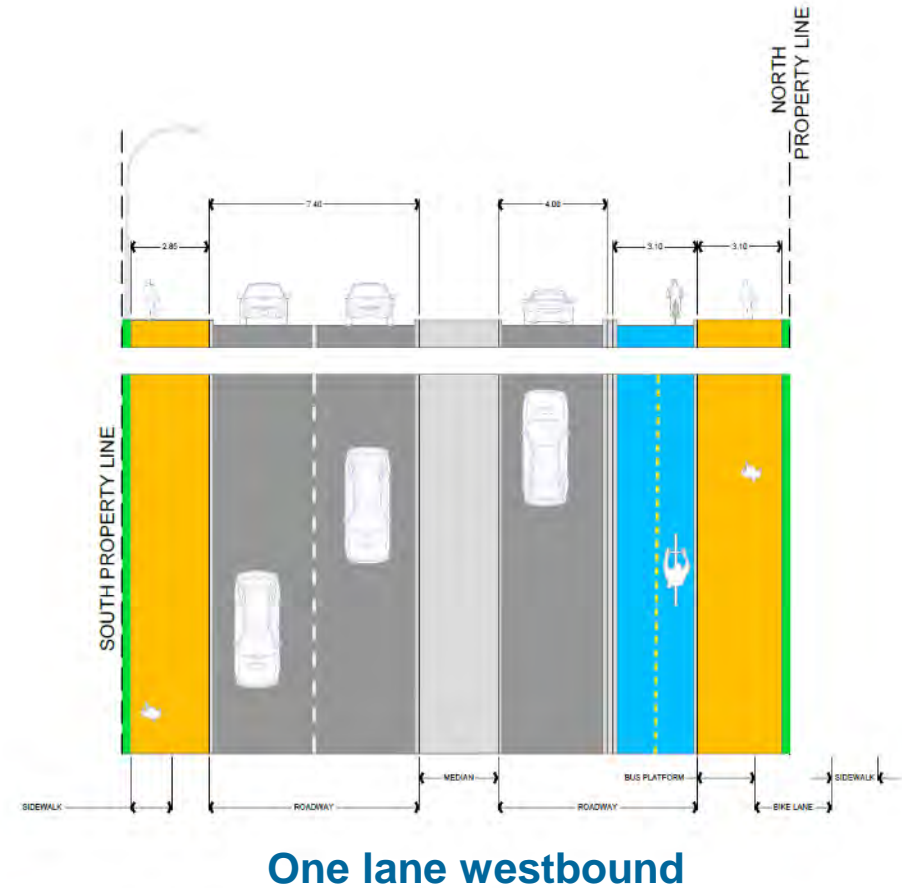
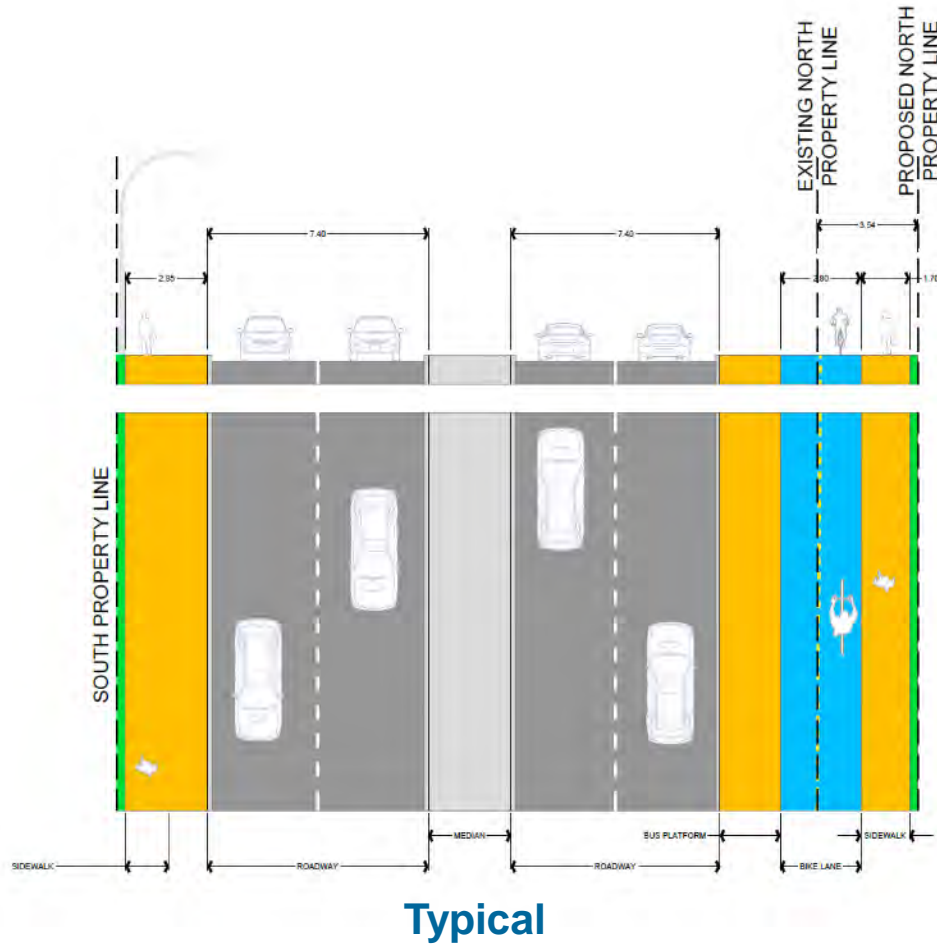
- Identified in the Pedestrian and Cycling Strategies (2015)
- Design:
 - Connect to existing bicycle infrastructure on Empress
 - Connect to Wellington Avenue
 - Wellington Railway crossing – alternate route

Conceptual design

Project area segments



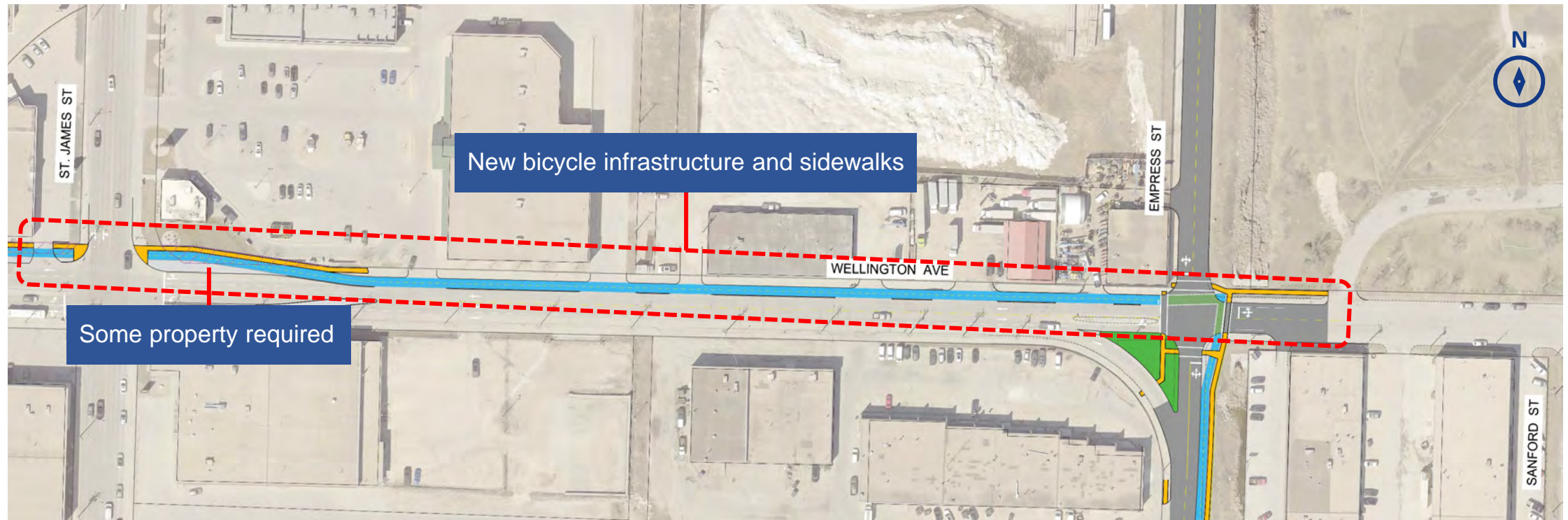
Roadway design – Wellington Avenue








- Sidewalk
- Bicycle infrastructure
- Roadway

Design overview

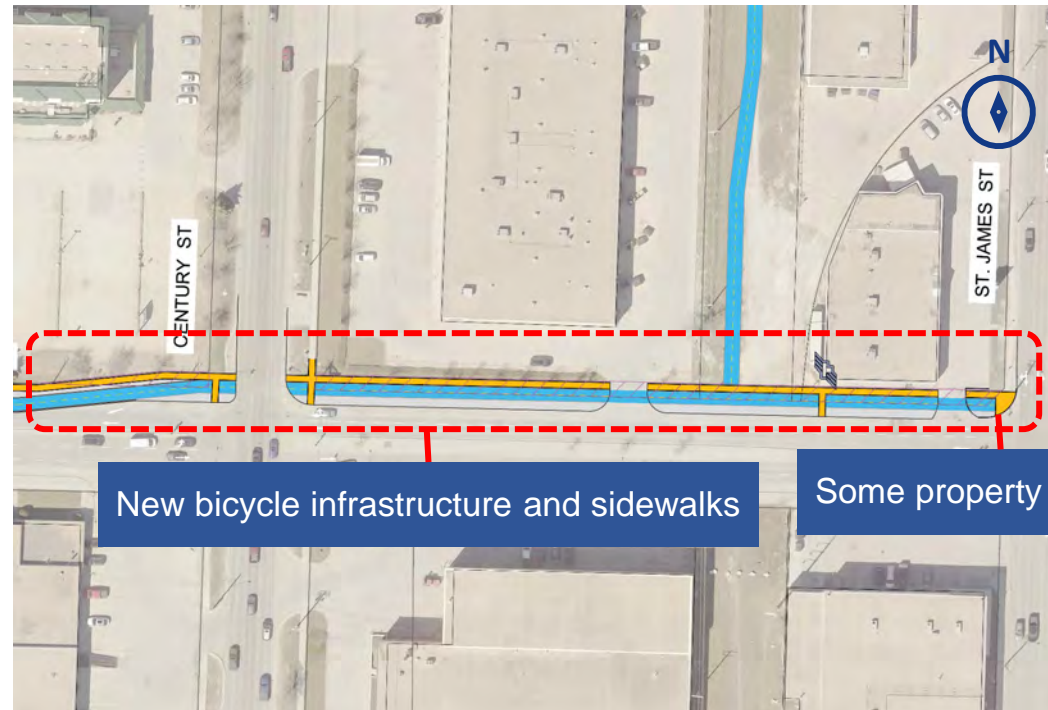
1 Wellington Avenue bicycle infrastructure



-  Sidewalk
-  Bicycle infrastructure
-  Intersection crossing
-  Existing sidewalk
-  Property requirements






Design overview

1 Wellington Avenue bicycle infrastructure



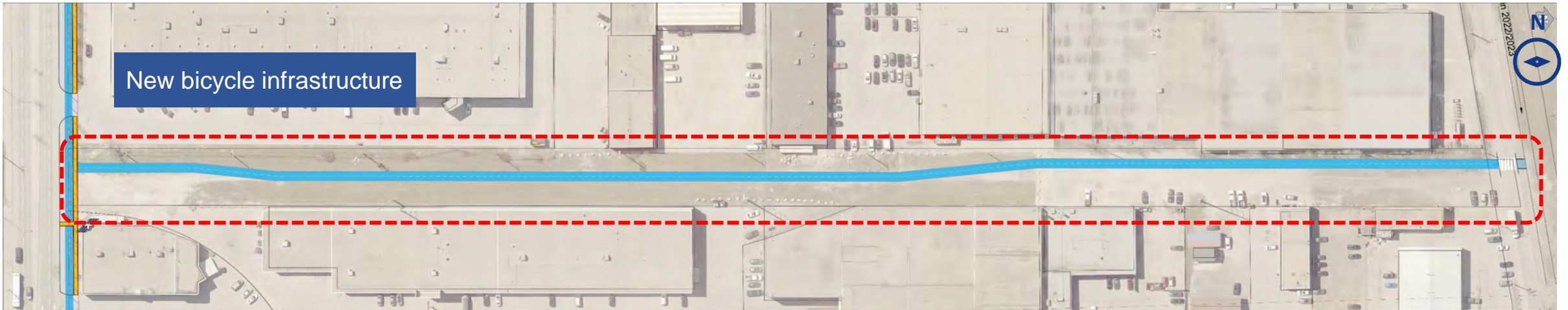
New bicycle infrastructure and sidewalks






Some property required

-  Sidewalk
-  Bicycle infrastructure
-  Intersection crossing
-  Existing sidewalk
-  Property requirements

Design overview

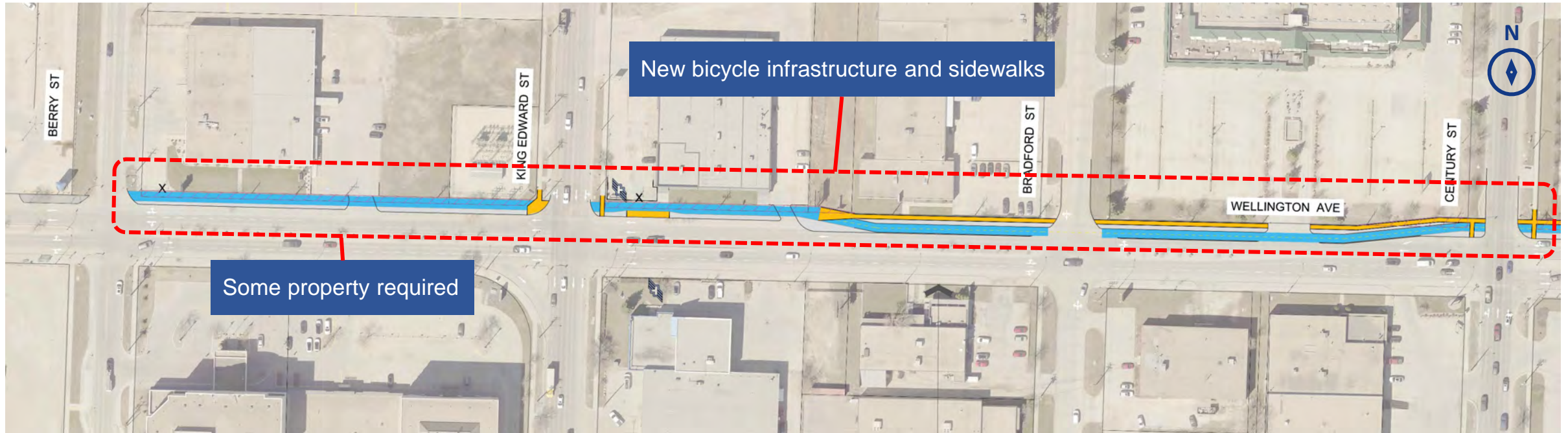
1 Wellington Avenue bicycle infrastructure








-  Sidewalk
-  Bicycle infrastructure
-  Intersection crossing
-  Existing sidewalk
-  Property requirements

Design overview

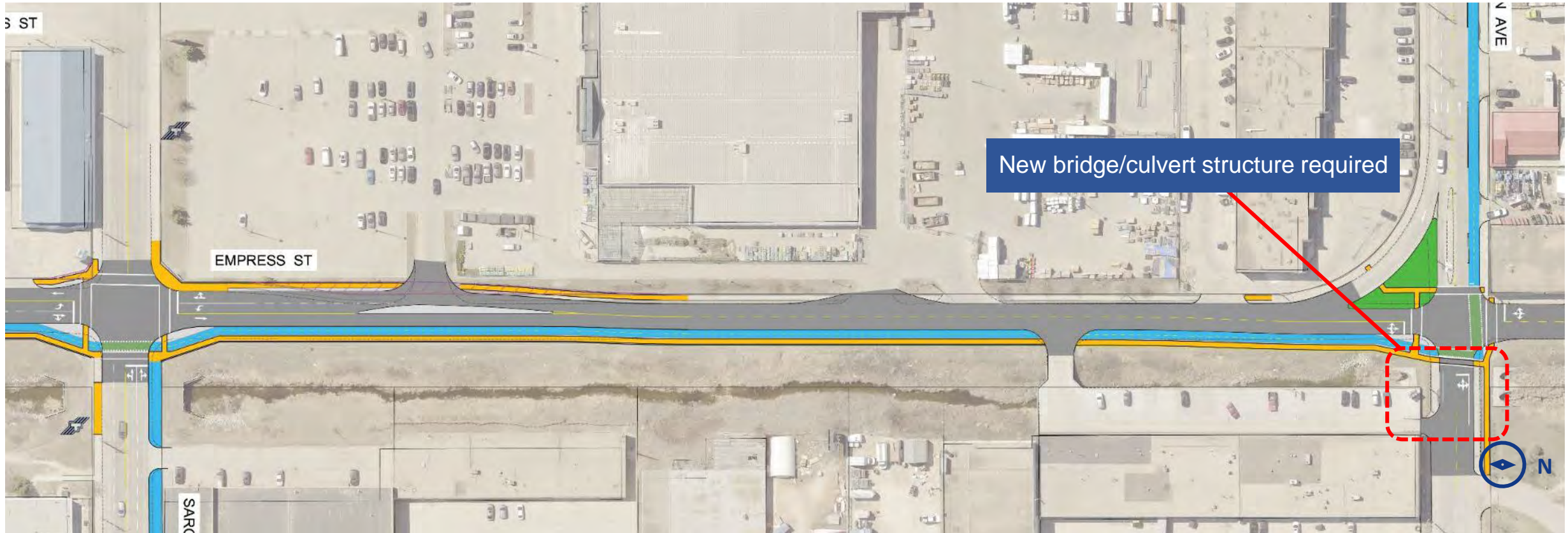
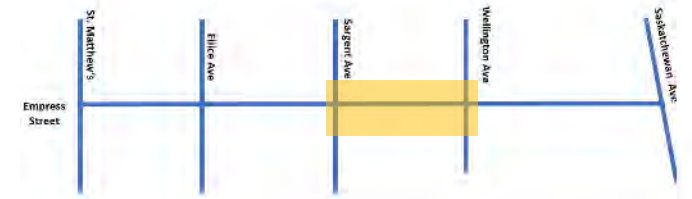
1 Wellington Avenue bicycle infrastructure









-  Sidewalk
-  Bicycle infrastructure
-  Intersection crossing
-  Existing sidewalk
-  Property requirements

Design overview

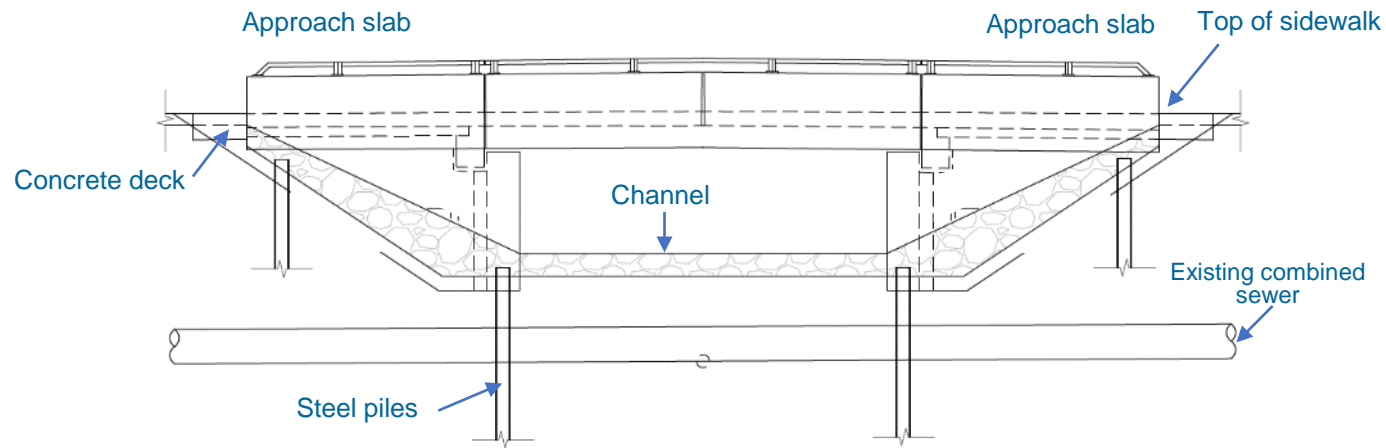
2 Empress Street at Wellington Avenue



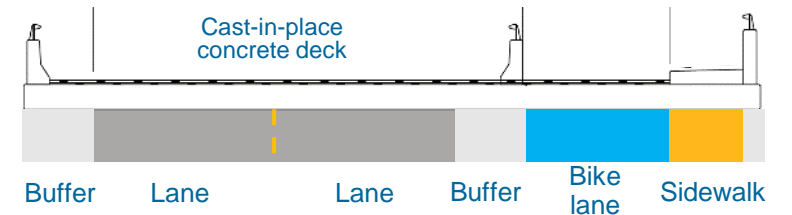
-  Sidewalk
-  Bicycle infrastructure
-  Intersection crossing
-  Roadway
-  Median / concrete boulevard
-  Existing sidewalk

Design overview

2 Option 1: Single-span bridge with cast-in-place deck



Elevation

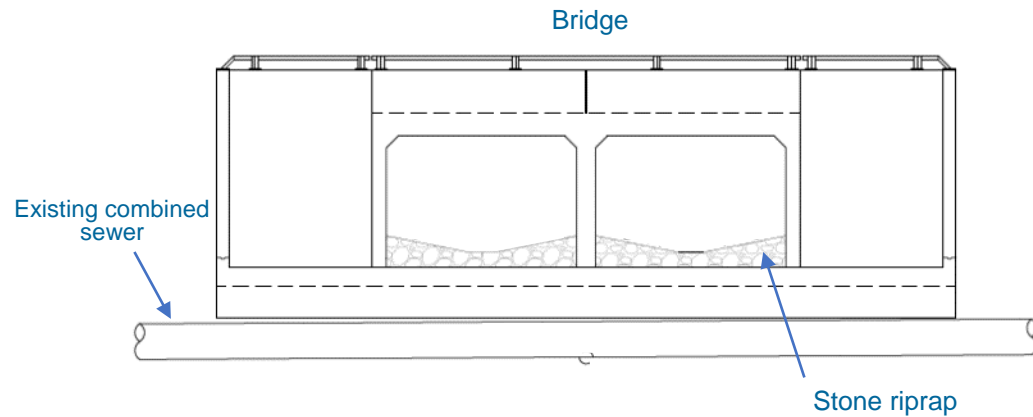


Section

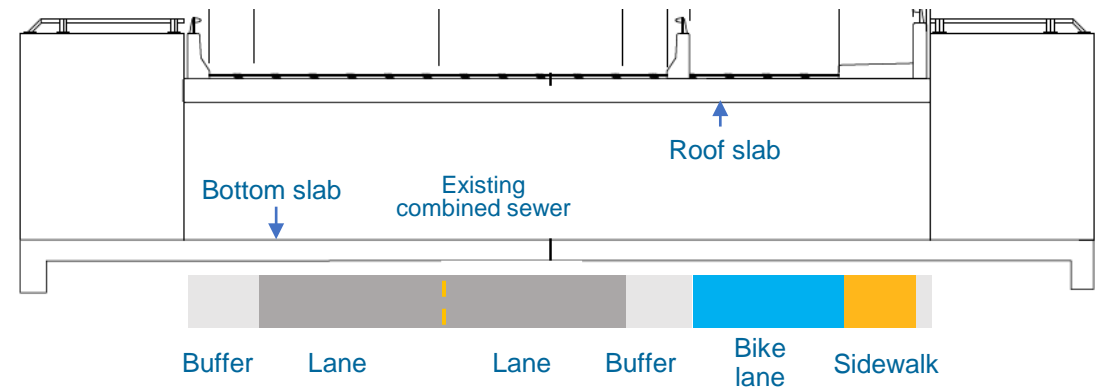


Design overview

2 Option 2 – Double cell cast-in-place concrete box culvert



Section

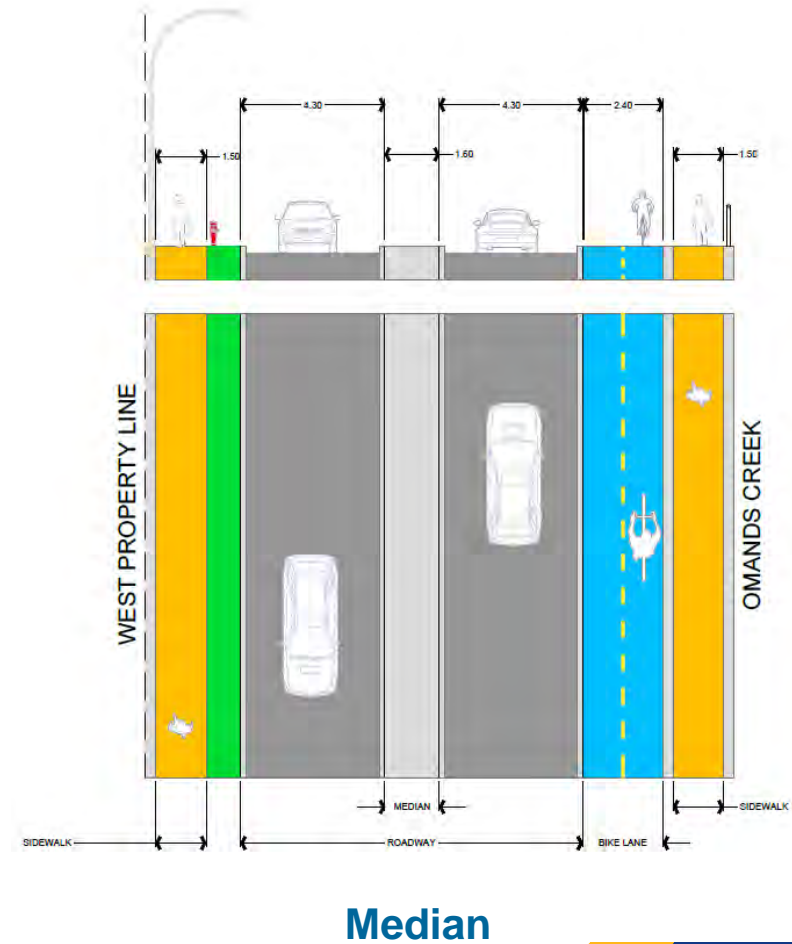
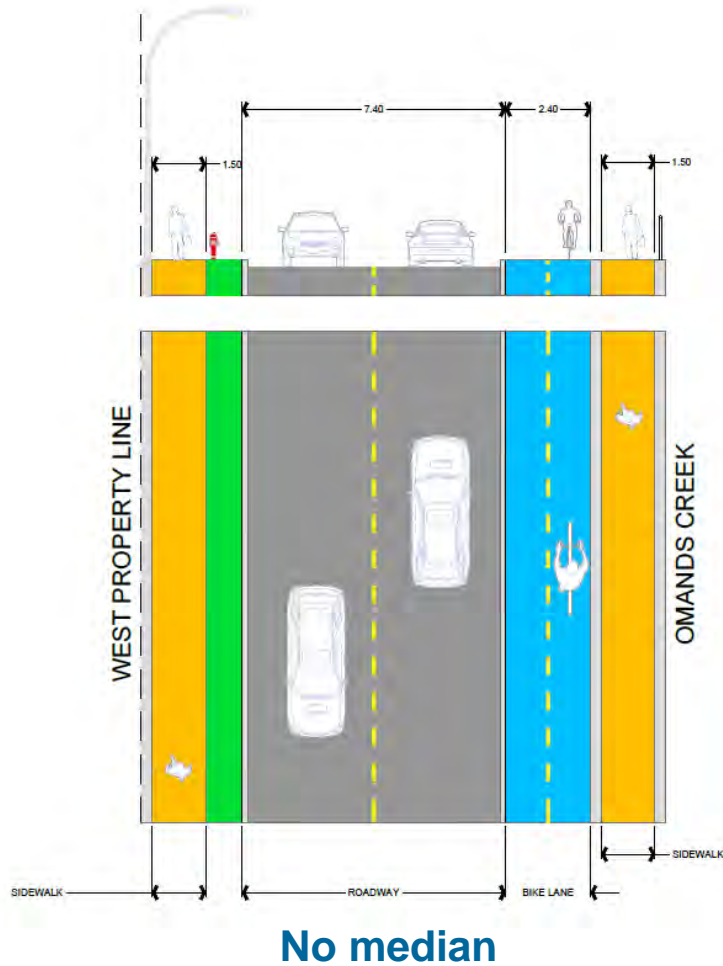


Elevation

(looking west)

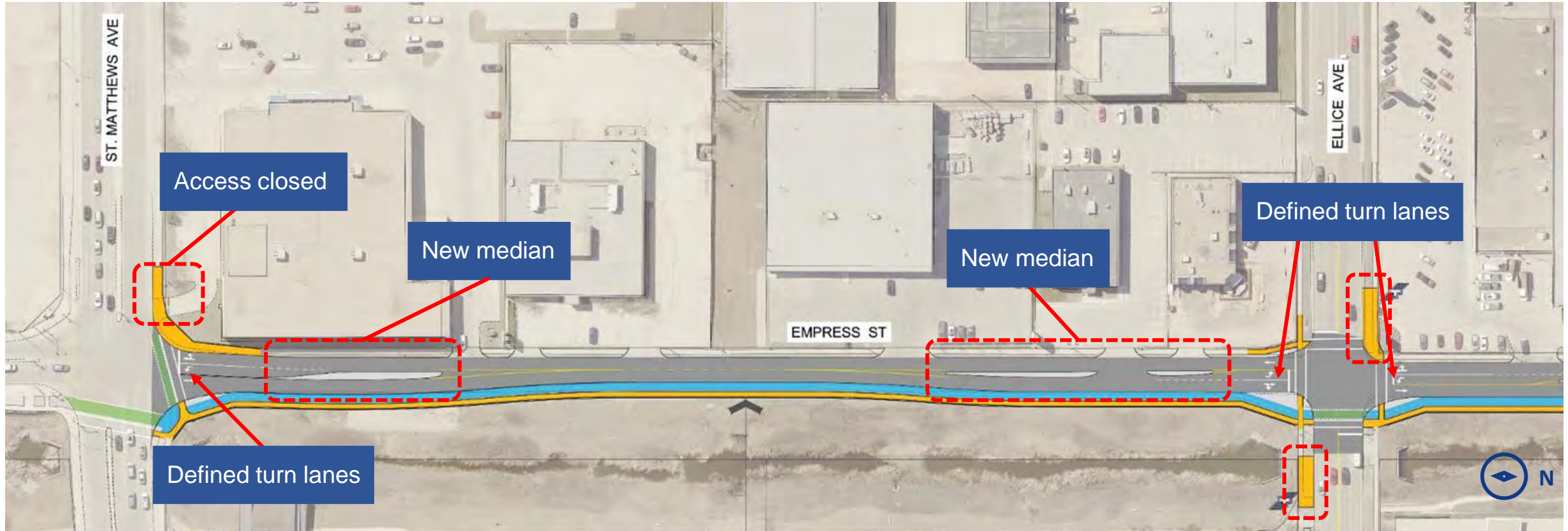
- Sidewalk
- Bicycle infrastructure
- Roadway
- Buffer







Roadway design – Empress Street



Design overview

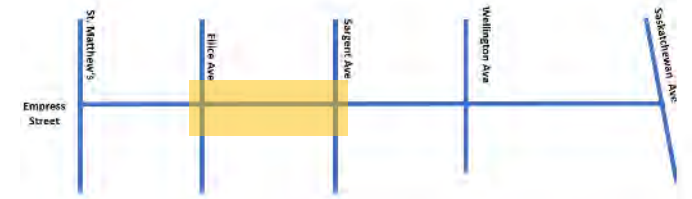
3 St. Matthews Avenue to Ellice Avenue









-  Sidewalk
-  Bicycle infrastructure
-  Intersection crossing
-  Roadway
-  Median / concrete boulevard
-  Existing sidewalk

Design overview

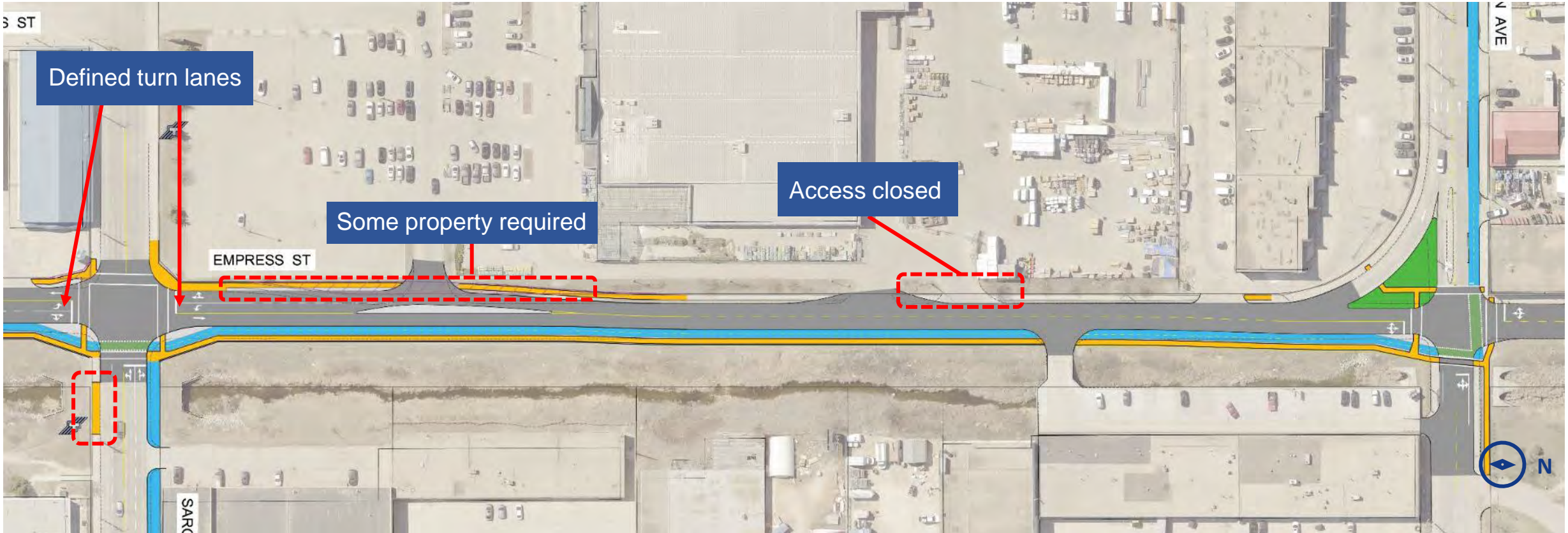
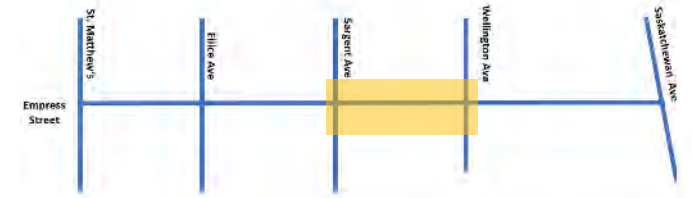
3 Ellice Avenue to Sargent Avenue





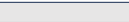



-  Sidewalk
-  Bicycle infrastructure
-  Intersection crossing
-  Roadway
-  Median / concrete boulevard
-  Existing sidewalk

Design overview

3 Sargent Avenue to Wellington Avenue





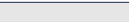



-  Sidewalk
-  Bicycle infrastructure
-  Intersection crossing
-  Roadway
-  Median / concrete boulevard
-  Existing sidewalk

Design overview

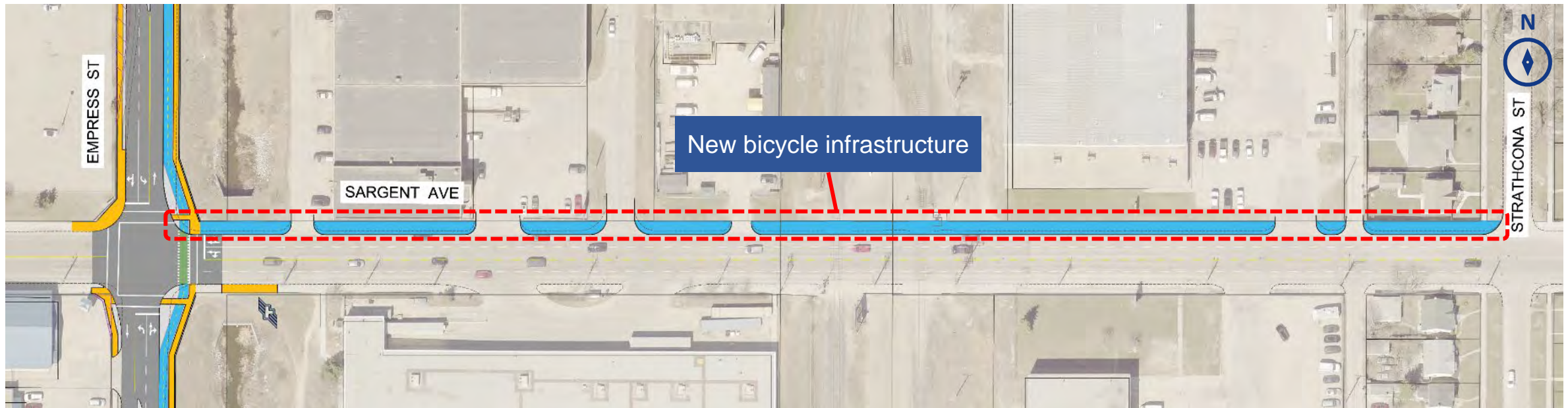
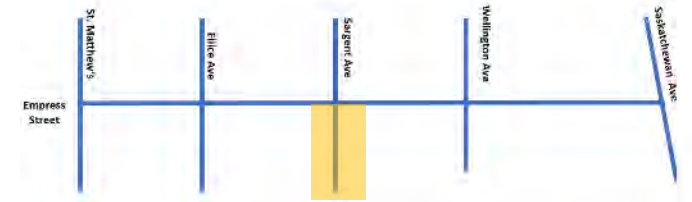
4 Wellington Avenue to Saskatchewan Ave







-  Sidewalk
-  Bicycle infrastructure
-  Intersection crossing
-  Roadway
-  Median / concrete boulevard
-  Existing sidewalk

Design overview

5 Sargent Avenue bicycle infrastructure



-  Sidewalk
-  Bicycle infrastructure
-  Intersection crossing
-  Existing sidewalk

Next steps



We are here!

Next Steps:

Preliminary design

&

Submit final preliminary design report

Thank you

Questions

Empress Corridor Design Study

rsegal@urbansystems.ca

204-259-3691

