



Welcome

William R. Clement Parkway Extension Functional & Preliminary Design Study

PUBLIC INFORMATION DISPLAY SESSION

March 19, 2015



Please use the sticky notes provided to post comments directly on the presentation boards.

Project staff are happy to answer your questions.

Please complete a comment sheet and submit it prior to leaving

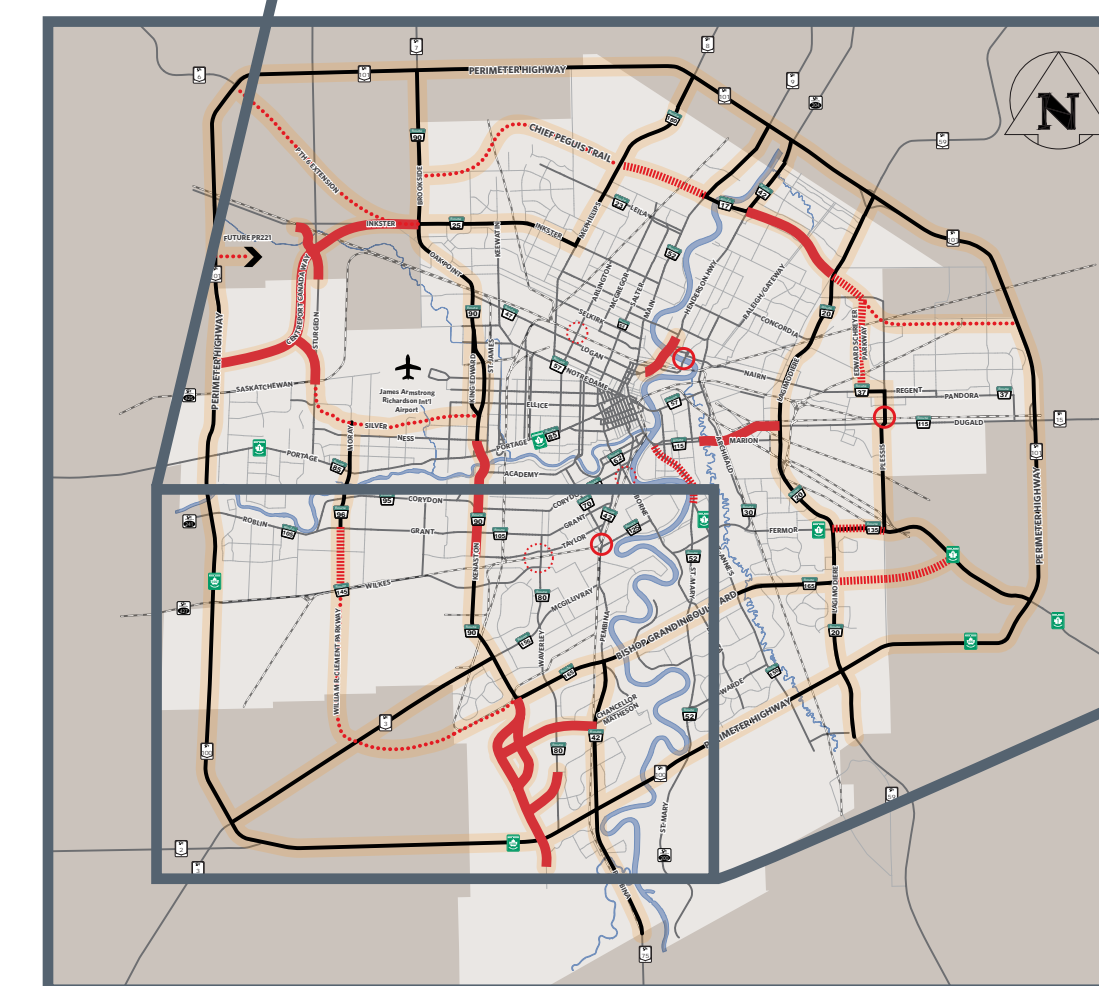
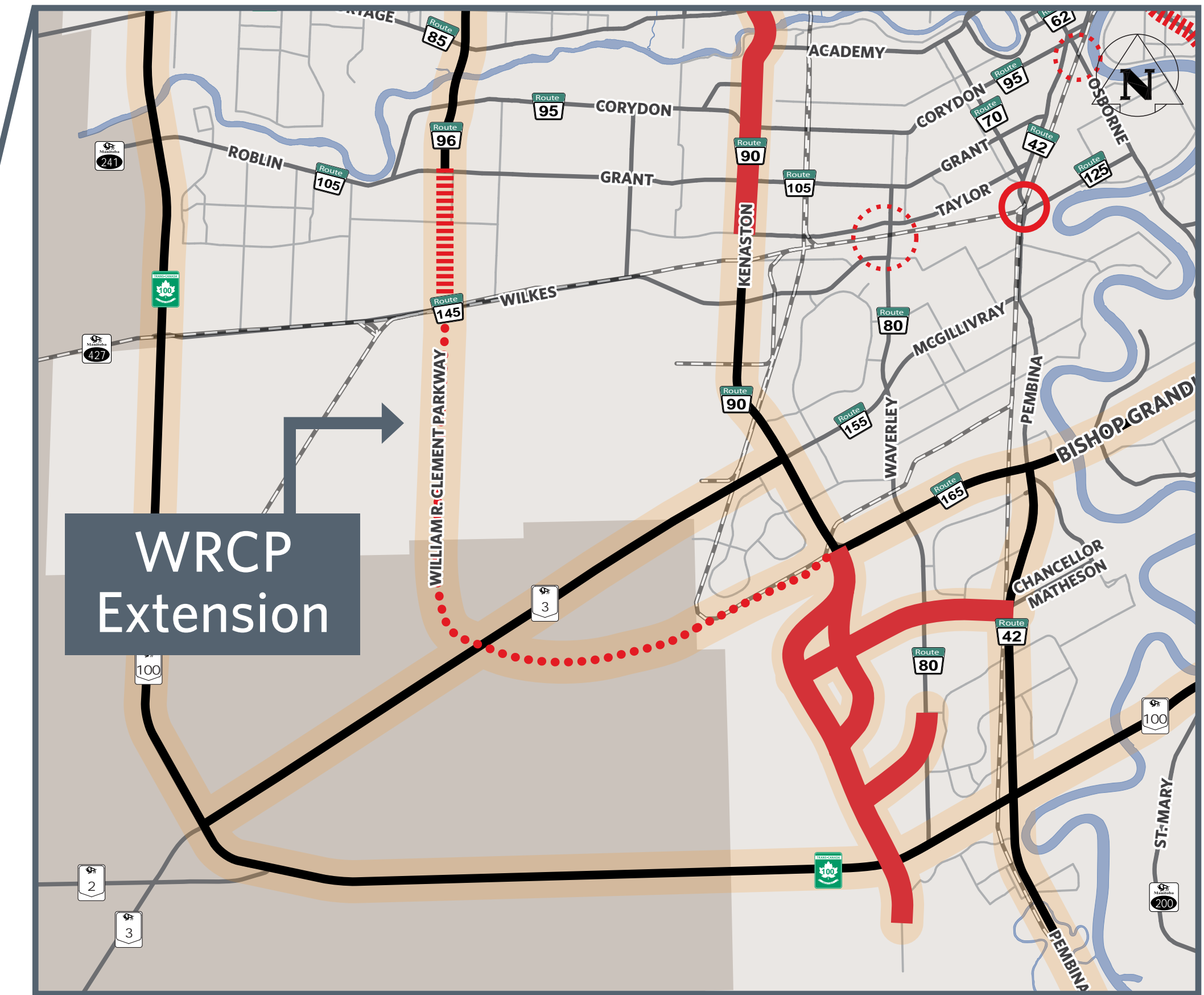
The William R. Clement Parkway (WRCPP) is:

- » An important component of the City's Strategic Road Network to accommodate the travel demand in west Winnipeg.
- » Intended to provide an important north-south link in west Winnipeg.
- » This project is an Engineering study, funding for construction is currently not in place.

Place Comments Here

The City of Winnipeg Transportation Master Plan (TMP) Recommends WRCP Extension

- » “The purpose of the TMP is to present a long-term strategy to guide the planning, development, renewal and maintenance of a multi-modal transportation system in a manner that is consistent with project needs, and aligned with the City’s growth and the overall vision for a sustainable Winnipeg and region.”
- » The WRCP Extension Study is identified as part of the TMP’s future Strategic Road Network.
- » On April 25, 2012 Winnipeg City Council approved an amendment to the TMP to change the WRCP Extension between Grant Ave. and Wilkes Ave. from a medium-term project to a short-term project.



City of Winnipeg
Transportation Master Plan
Road Implementation Network Map

Place Comments Here

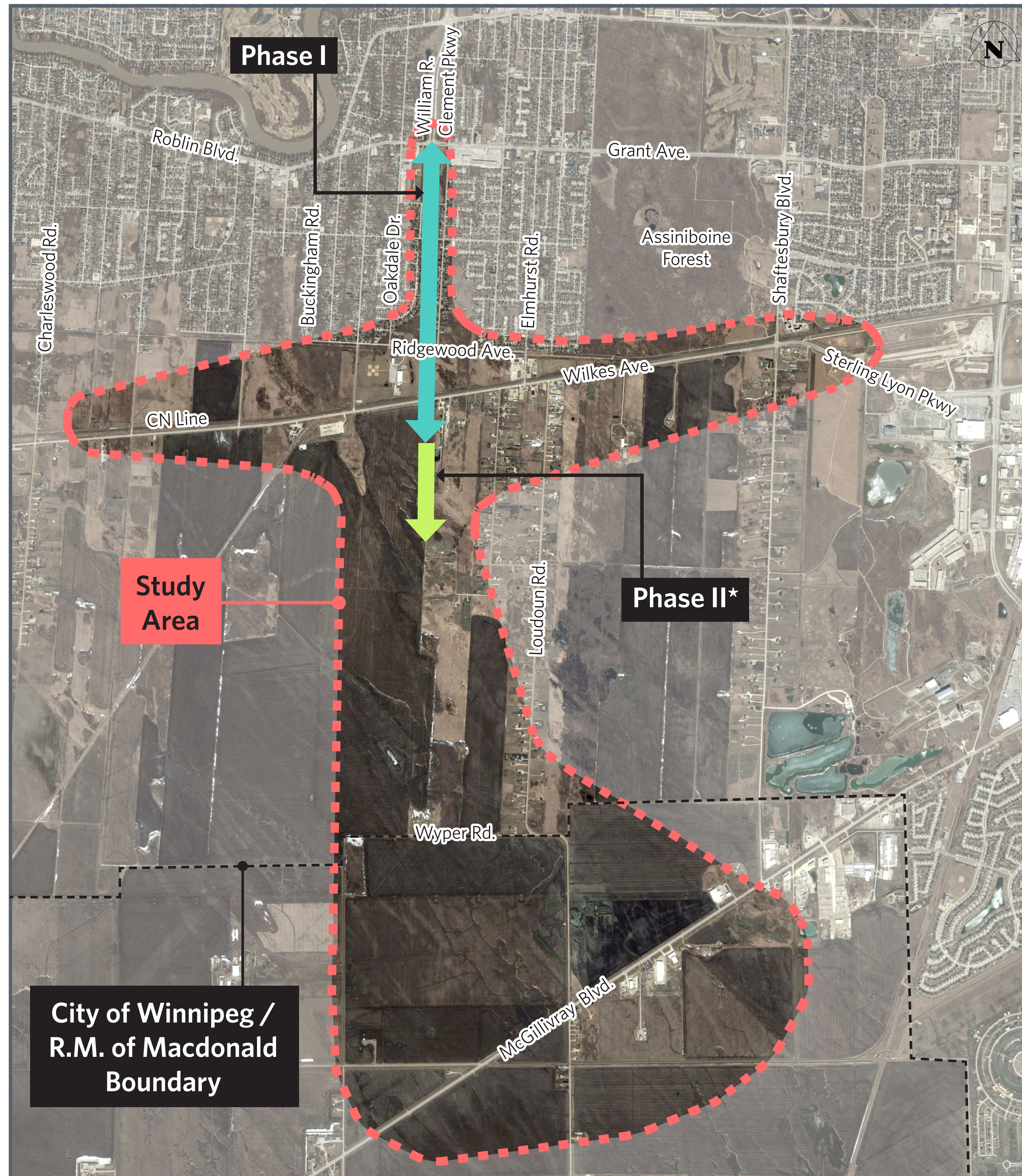
Project Study Area



Place Comments Here

- » Conduct a high-level functional design from Grant Ave. to McGillivray Blvd.
- » Conduct a more detailed preliminary design from Grant Ave. to Wilkes Ave.
- » Incorporate grade separation of WRCP Extension at the CN Main Line (North of Existing Wilkes Ave.).
- » Develop alternatives for the WRCP Extension connection to Wilkes Ave.
- » Twinning of Wilkes Ave. and develop realignment alternatives.
- » Develop alternatives for the Harte Trail crossing of the WRCP Extension.
- » Obtain Environmental Act Licencing for the WRCP Extension from Grant Ave. to Wilkes Ave.
- » Undertake conceptual Environmental Assessment Study for the long-term Extension of the WRCP from Wilkes Ave. to McGillivray Blvd.

Place Comments Here



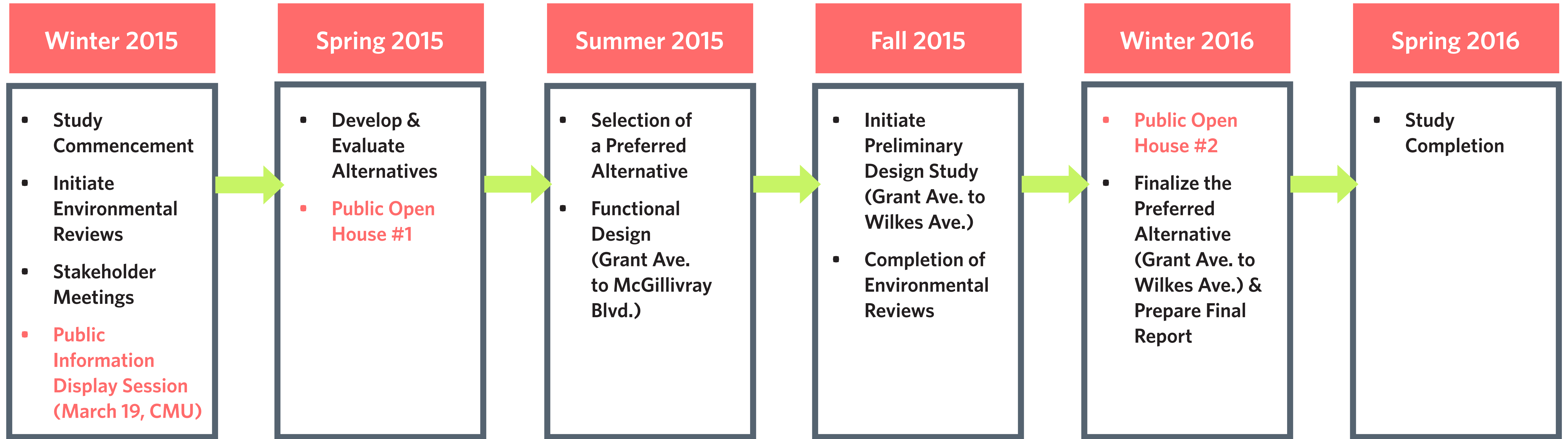
The WRCP Extension Includes two Phases:

- » Phase I - Short-term
 - » Extension from Grant Ave. to Wilkes Ave.
- » Phase II - Long-term*
 - » Future extension of WRCP from Wilkes Ave. to McGillivray Blvd.

Place Comments Here

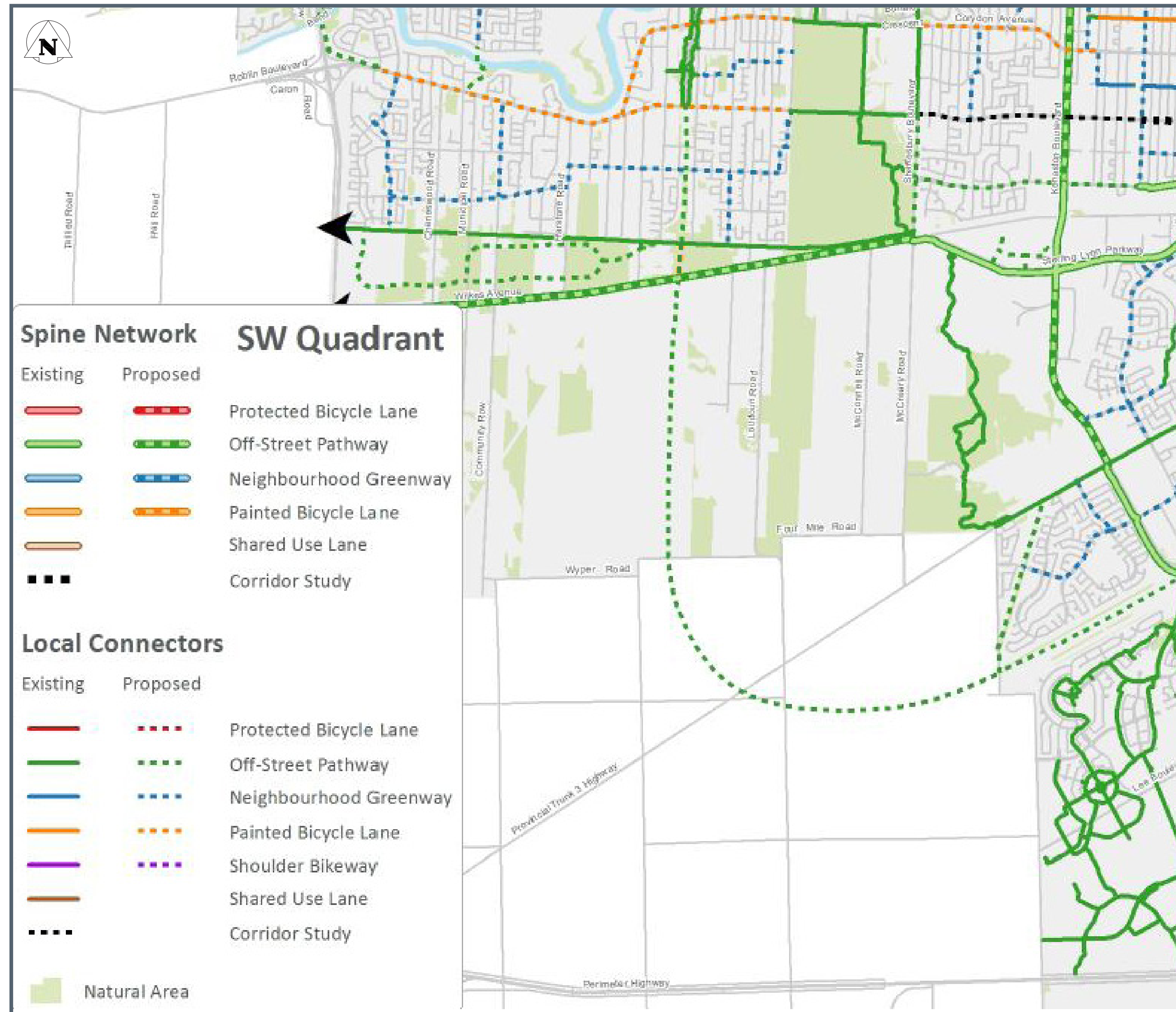
* As per the City of Winnipeg's Transportation Master Plan

Project Timeline



We Are Here

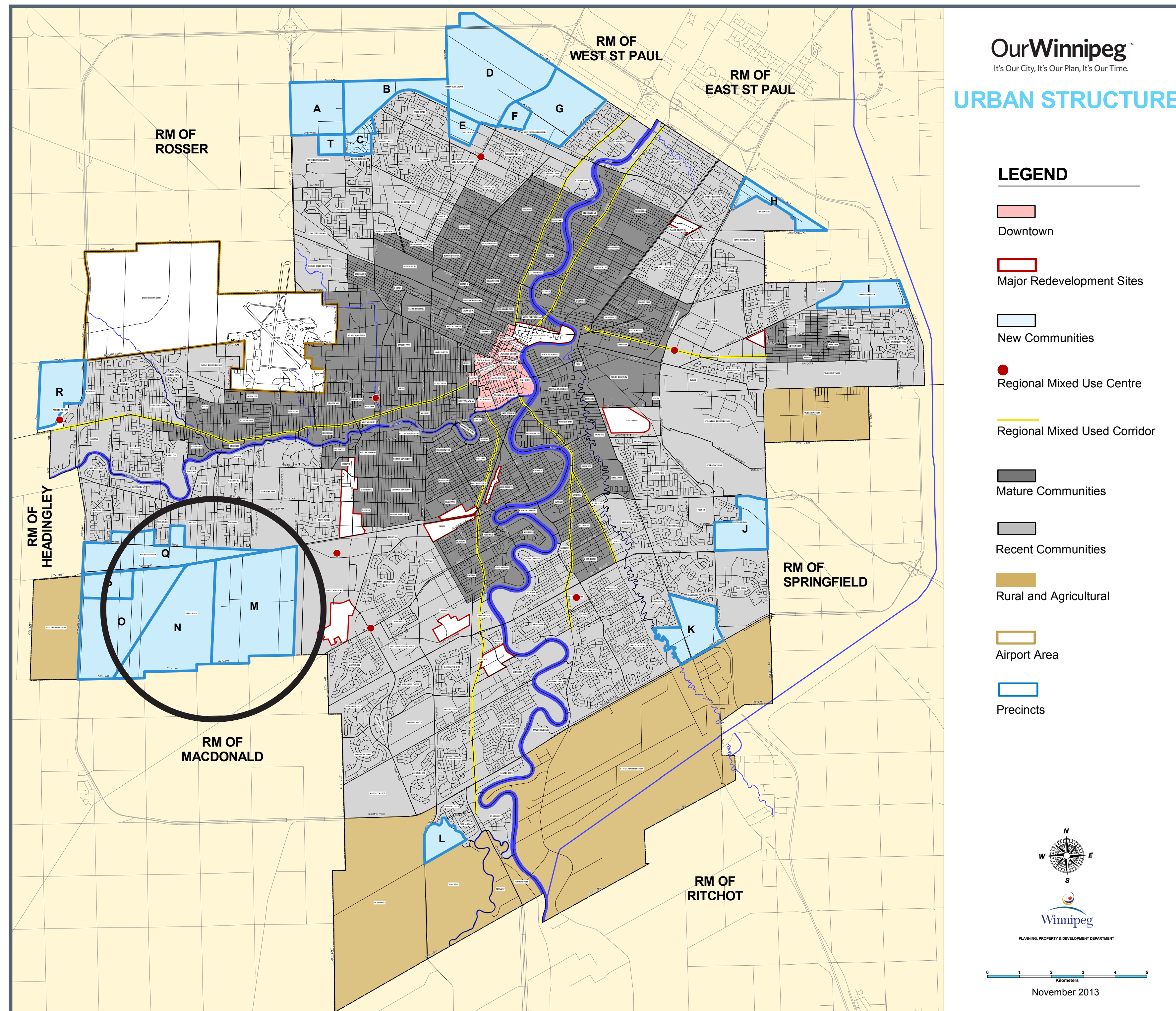
Place Comments Here



» Proposed Cycling Facilities from Pedestrian and Cycling Strategies Map (subject to Council approval)

Note: this document will supersede the pedestrian and cycling plan in the TMP, once approved by Council.

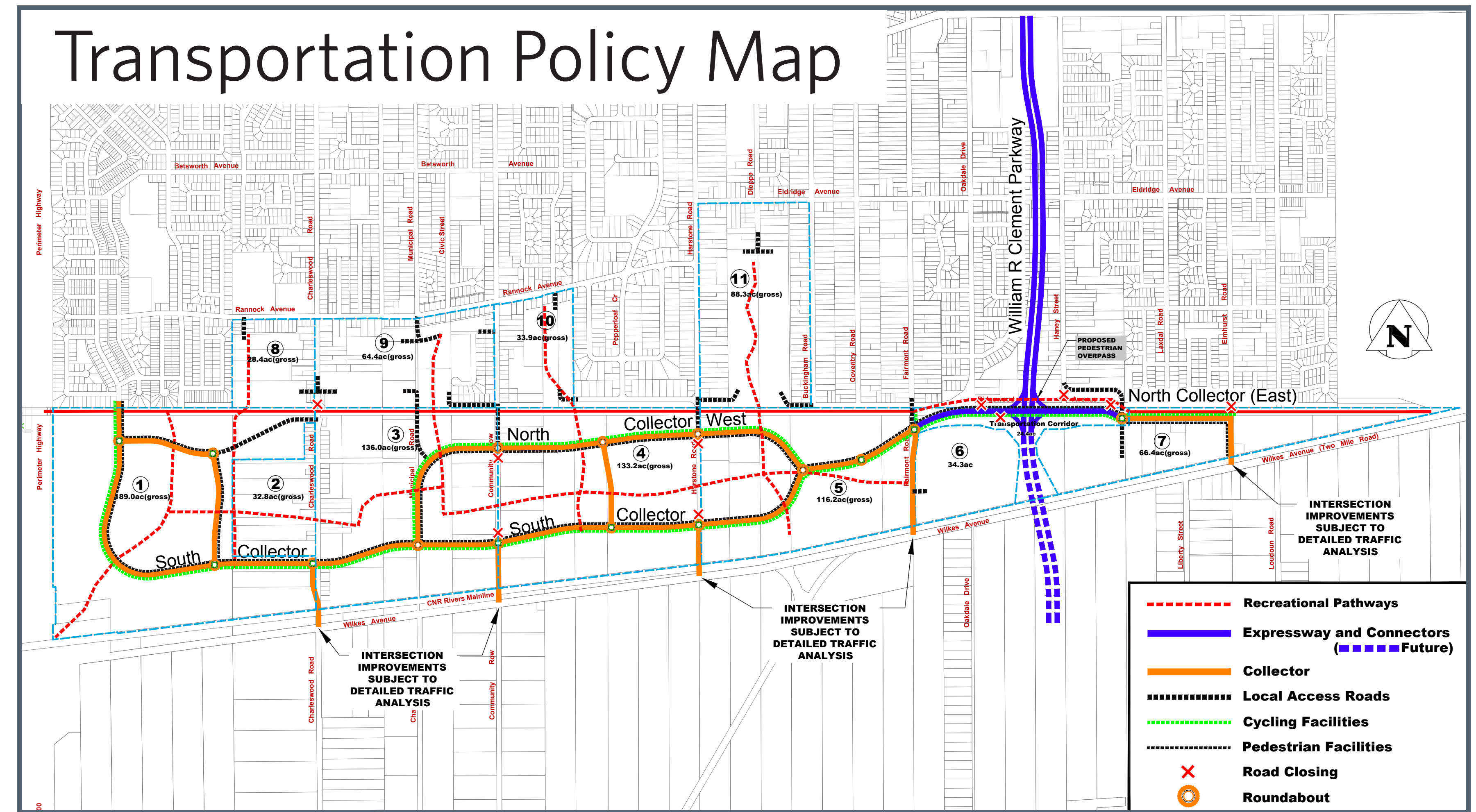
Place Comments Here



City of Winnipeg Complete Communities Directions Strategy

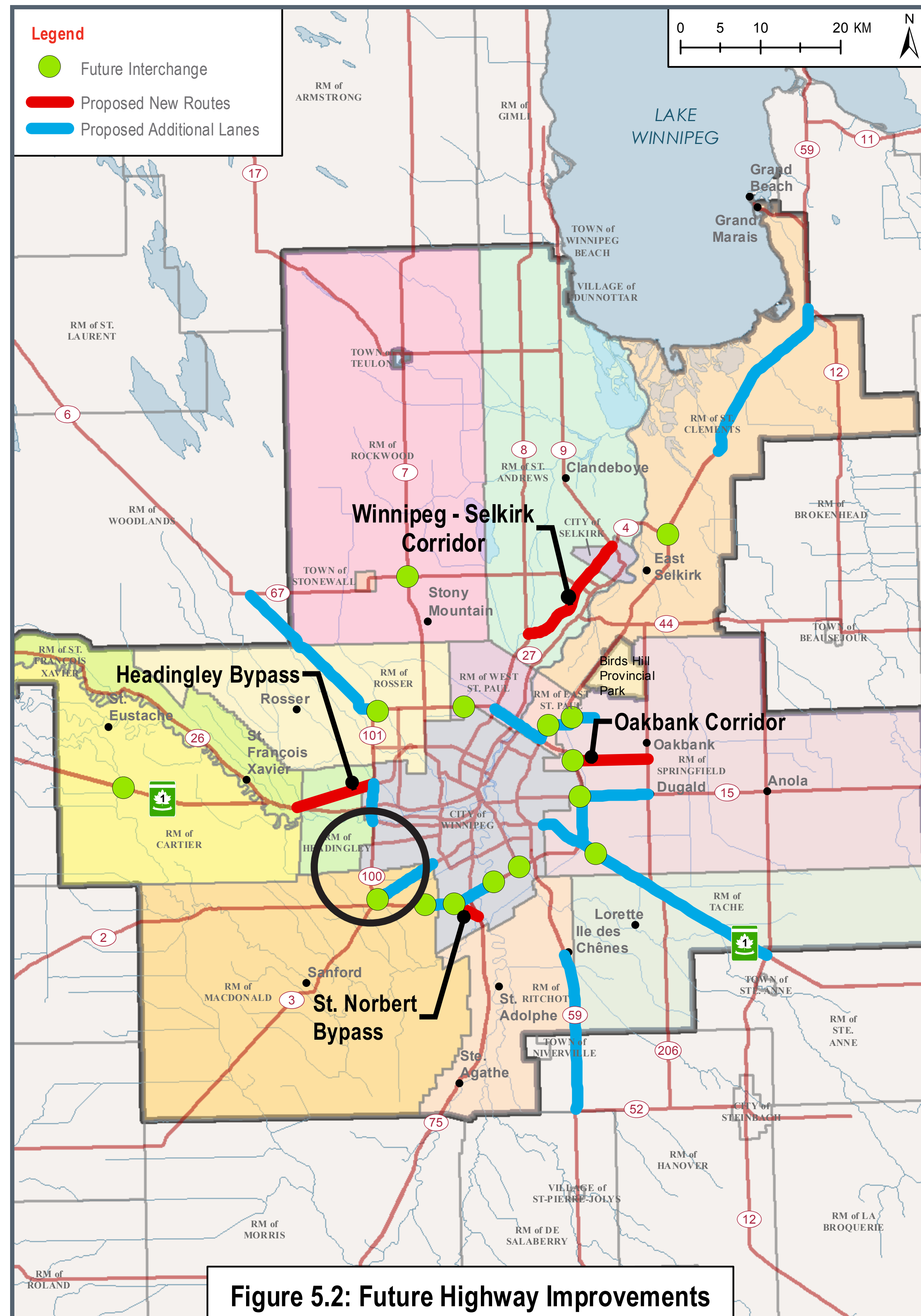
- » The WRCP Extension will pass through Recent Communities and New Communities known as Precincts (Q, N and/or M).
- » Precincts require a “Precinct Plan” to ensure organized development and transportation planning.
- » **New Communities** are large land areas identified for future urban development. These areas are not currently served by a full range of municipal services. Many of these lands were previously designated as Rural Policy Area in Plan Winnipeg 2020.
- » **Recent Communities** are areas of the city that were planned between the 1950s and the late 1990s. They are primarily low and medium density residential with some retail. The road network is a blend of modified grid and curvilinear, often without sidewalks or back lanes. These are typically stable residential communities with limited redevelopment potential over the next 30 years.

- » Precinct Q Plan approved as a by-law, now called Ridgewood, will be a new residential neighbourhood.
- » Development is commencing in Ridgewood and there will be associated intersection improvements at Wilkes Ave. and Charleswood Rd. this year.
- » Transportation plans in this by-law depict the WRCPC Extension as the main access in and out of the neighbourhood.
- » Grade separation is planned for the WRCPC and Harte Trail.



Ridgewood South Precinct Plan

Place Comments Here



- » The long-term WRCP Extension (Phase II) will be partially outside of the City's boundary and will require coordination with the Rural Municipality of Macdonald and Manitoba Infrastructure and Transportation (MIT).
- » The TMP calls for highway network improvements adjacent to the study area that will have to be considered. These include:
 - » Future interchanges on PTH 101 (Perimeter Highway).
 - » Future twinning of McGillivray Blvd.

Place Comments Here

Study Area Considerations

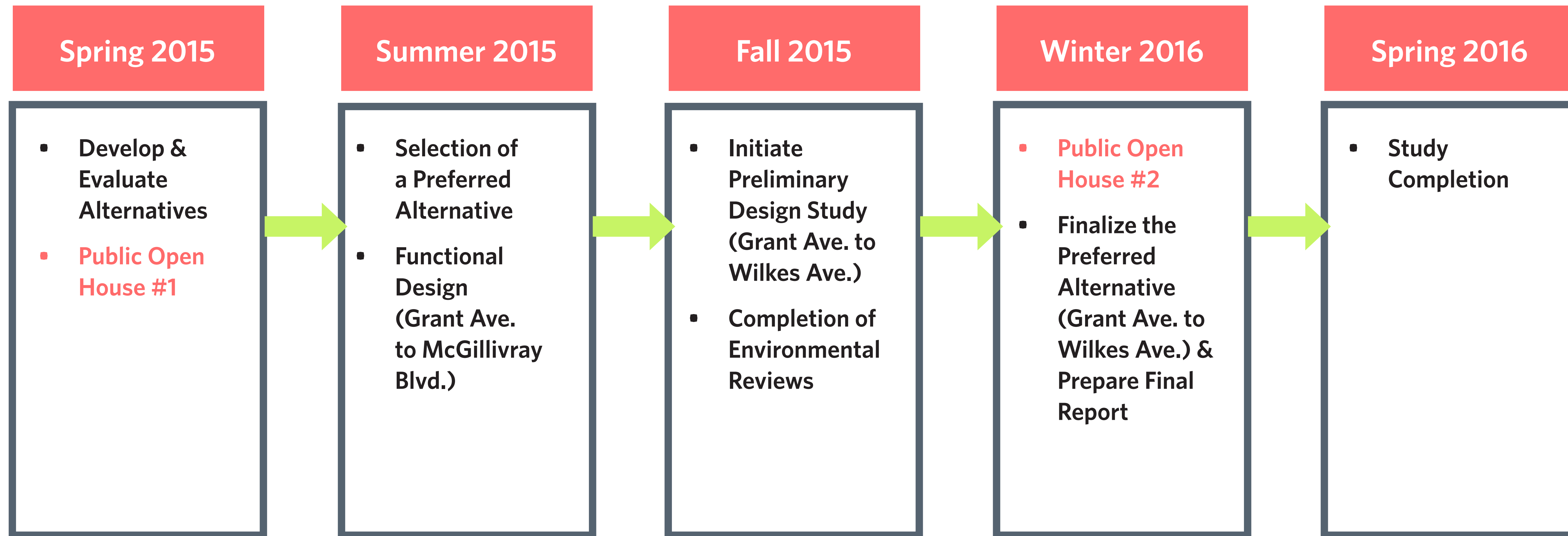


Place Comments Here

Grant Ave. to Wilkes Ave. - Existing Conditions



Place Comments Here



Next Step

Place Comments Here

If you would like to be notified personally of future events, please leave your name and email or mail address on your comment sheet.

On behalf of the Project Team, thank you for your attendance and participation. Please fill out a feedback form before you leave.

For more information, contact:

Chris Baker, MMM Group | bakerc@mmm.ca | 204.943.3178

Public Consultation Lead:

David Jopling, MMM Group | joplingd@mmm.ca | 204.943.3178

Project website:

<http://winnipeg.ca/WRCP-Extension>