

Brady Road Resource Management Facility

Community Liaison Committee
May 14th, 2025

Brady CLC

Landscaping and Long-term Site Planning

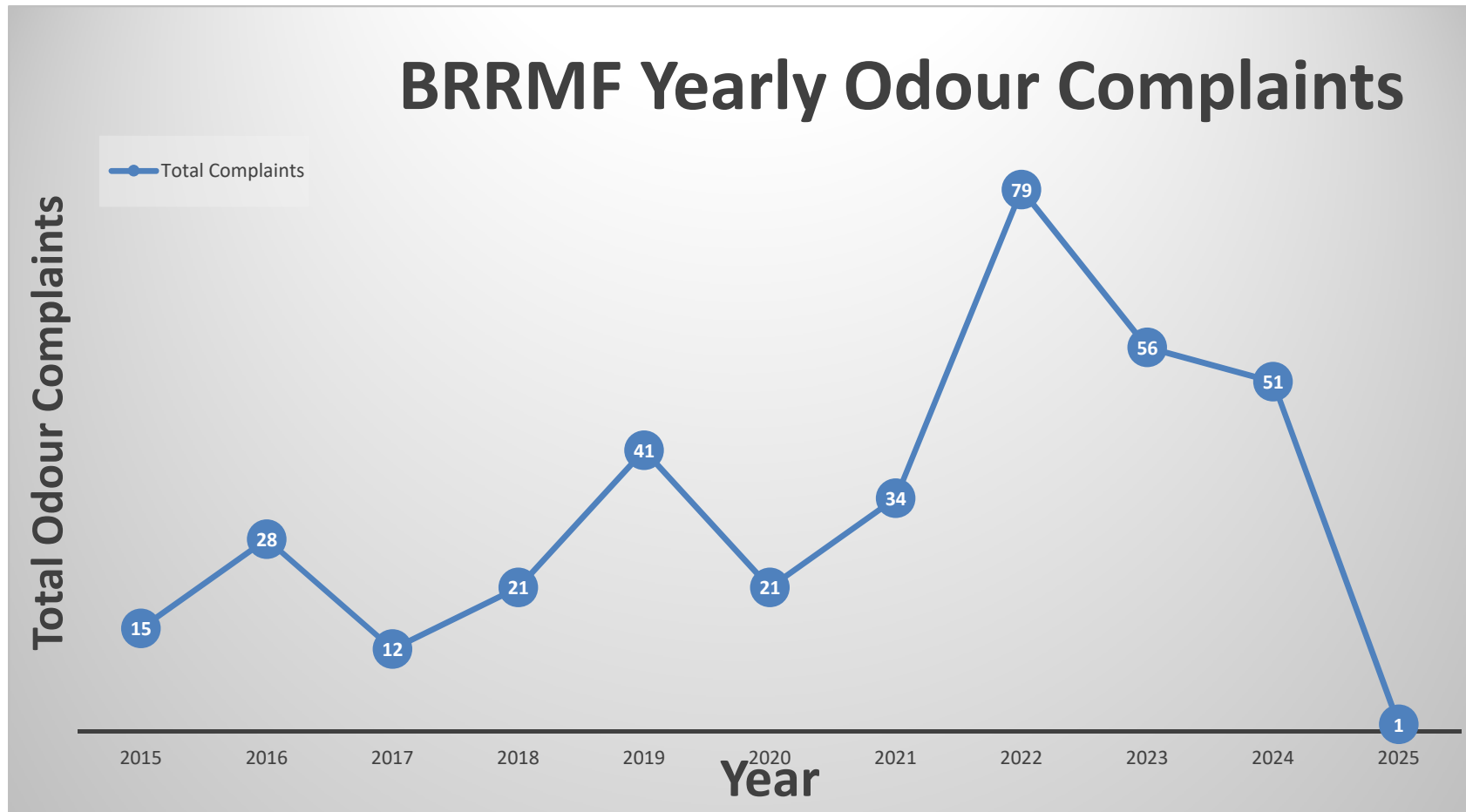
- Shelter belt planting of hybrid poplar and willows completed June 2024
- Look at planting options on Lime Mud berm

Brady CLC

Odour, Noise and Nuisance Management

- Received 11 odour complaints since our last meeting. Ten in 2024 and one in 2025 (next slide odour complaint trend graph)
- Litter control continues
 - Using wind fencing
 - New Directions and Siloam Mission helping with litter picking onsite
 - Trying some secondary fencing around the North side of Compost Facility

Brady CLC

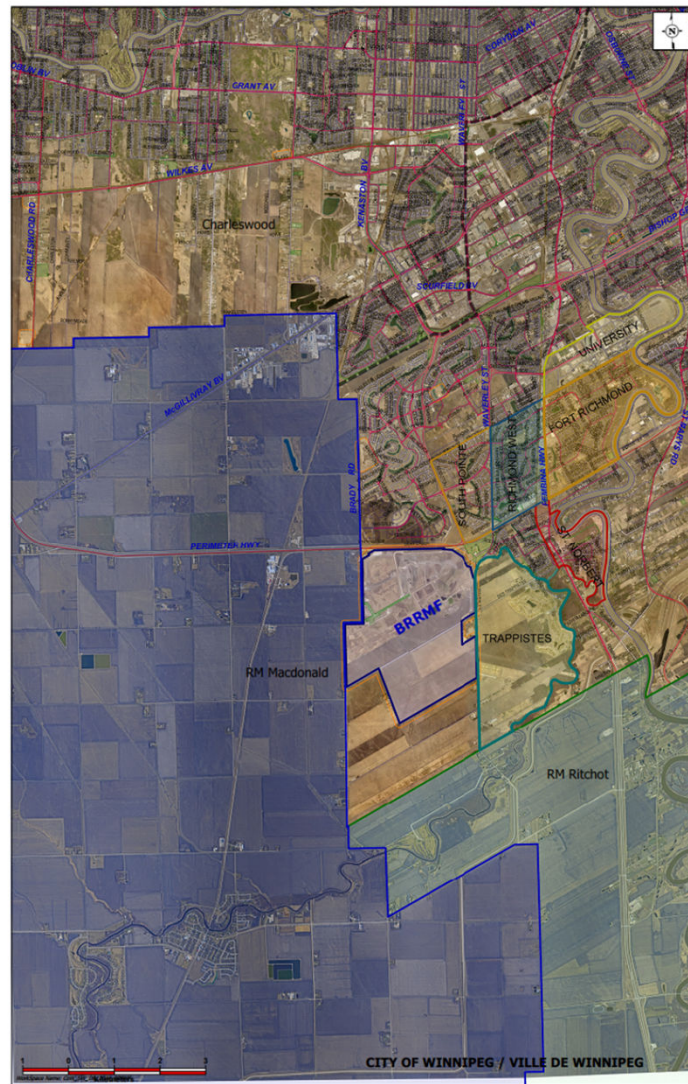


Brady CLC

Site Improvements, Seasonal & Project Activity

- 2025 curbside yard waste collection started April 28th for week A, May 5th for week B
- Extremely Dry conditions this year, only received 2.9 mm of rain in April
- We switched to summer hours of operation on May 5th, 2025
- Compost giveaway was May 9th to 11th, 2025. We gave away 1,500 cubic metres to approximately 10,000 customers.

Brady CLC



Brady CLC

New Business

- Cell 35 construction begins this year with the new cell opening fall of 2025. Going to be using Tire derived aggregate for some of the drainage blanket.
- New survey grade drone and software.
- Working on Public Awareness Program for lithium ion batteries.
- Pilot on real time methane monitoring sensors on Brady's North Slope.

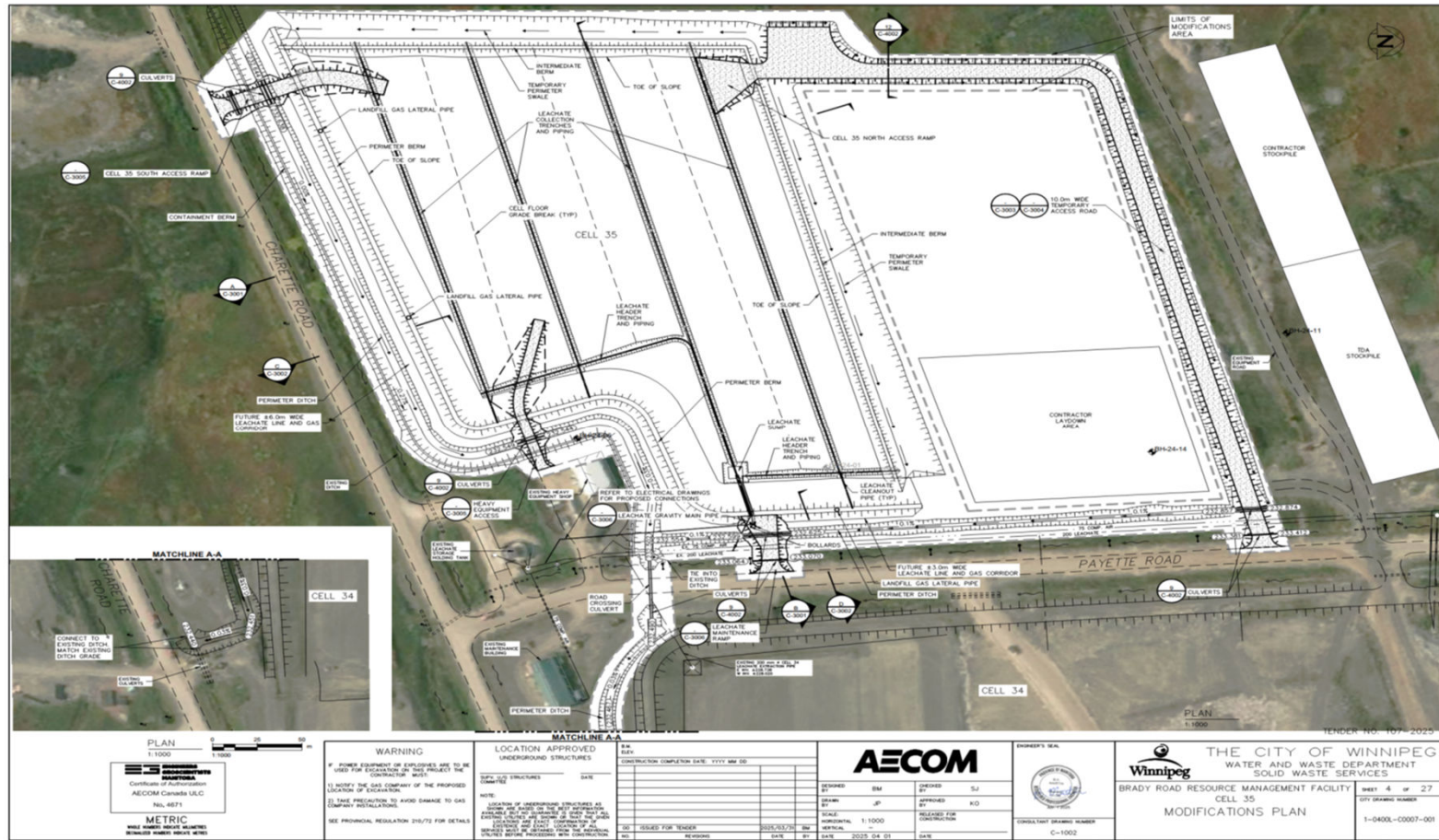
Brady CLC



winnipeg.ca/waterandwaste

Brady CLC





Brady CLC

Thank you

winnipeg.ca/waterandwaste

