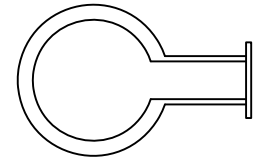
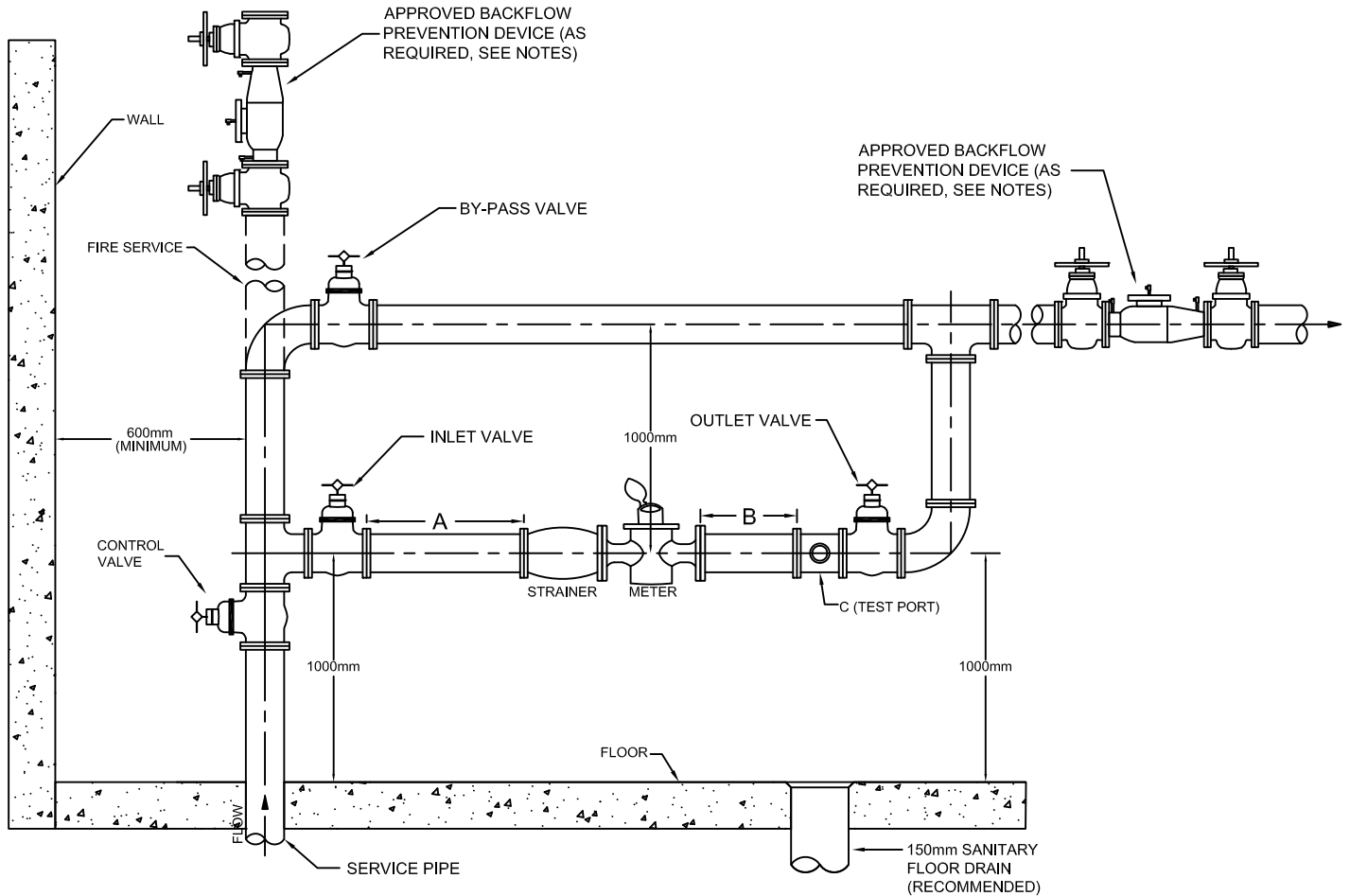


A - 5x STRAIGHT PIPE DIAMETER  
 B - 4x STRAIGHT PIPE DIAMETER  
 C - TEST PORT



C - TEST PORT

FLOOR



PROPOSED ADDITION TO THE CITY OF WINNIPEG STANDARD CONSTRUCTION SPECIFICATIONS



**THE CITY OF WINNIPEG**  
**WATER & WASTE DEPARTMENT**

INSTALLATION DETAILS FOR  
 COMPOUND, TURBINE OR ELECTROMAGNETIC  
 TYPE WATER METER IN BUILDINGS  
 75mm - 250mm COMBINED OR DOMESTIC  
 SERVICE PIPE


# INSTALLATION DETAILS FOR COMBINED OR DOMESTIC WATER SERVICE 75mm TO 250mm SERVICE PIPE WATER METER INSTALLATION NOTES

NOTES:

- 1) ALL WATER METERS MUST BE INSTALLED IN A HORIZONTAL POSITION
- 2) ALL VALVES MUST BE FULLY OPENING GATE OR BALL VALVES  
**BUTTERFLY OR ANGLE VALVES WILL NOT BE ACCEPTED**
- 3) BY-PASS PIPING MAY BE INSTALLED IN THE HORIZONTAL OR VERTICAL ORIENTATION AROUND THE WATER METER. THE INLET TEE MUST BE INSTALLED WITHIN 1000mm FROM THE FLOOR WHERE THE WATER SERVICE PIPE ENTERS THE BUILDING
- 4) ADEQUATE PIPE AND METER SUPPORT MUST BE PROVIDED.  
ELECTROMAGNETIC METERS MUST NOT BE DIRECTLY SUPPORTED. SUPPORT MUST BE PROVIDED IMMEDIATELY ADJACENT TO THE METER
- 5) WATER METER SIZE IS BASED ON FLOW DEMANDS SUPPLIED BY THE CUSTOMER. IF REQUIRED, CONCENTRIC PIPE REDUCERS MUST BE INSTALLED DIRECTLY TO THE INLET AND OUTLET VALVES. REDUCERS WILL ONLY BE REQUIRED IF THE WATER METER IS SIZED SMALLER THAN THE DOMESTIC SERVICE
- 6) PIPING, INCLUDING BY-PASS PIPING, MUST BE INSTALLED WITH A MINIMUM OF 600mm UNOBSTRUCTED CLEARANCE FROM ANY WALLS OR CEILINGS
- 7) METER ISOLATION VALVES (INLET AND OUTLET) MUST NOT BE USED TO THROTTLE FLOW TO THE PROPERTY
- 8) THE BY-PASS VALVE(S) MUST REMAIN CLOSED AT ALL TIMES AND MUST BE SEALED CLOSED BY THE WATER AND WASTE DEPARTMENT
- 9) A STRAINER WILL BE SUPPLIED AND INSTALLED WITH THE WATER METER AS REQUIRED. A STRAINER IS NOT REQUIRED WITH AN ELECTROMAGNETIC WATER METER
- 10) IF NECESSARY THE CITY WILL REMOVE OR REQUIRE THE REMOVAL OF INSULATION PREVENTING ACCESS TO THE METER
- 11) THE TEST PORT MUST BE EASILY ACCESSIBLE FOR THE PURPOSE OF CONNECTING A HOSE FROM THE PORT TO A PORTABLE TEST METER THEN TO THE FLOOR DRAIN. THE SOLE PURPOSE OF THIS PORT IS TO PERFORM A VOLUMETRIC ACCURACY TEST ON THE WATER METER IF REQUIRED
- 12) APPROVED BACKFLOW PREVENTION DEVICE, AS REQUIRED, IN ACCORDANCE WITH THE NATIONAL PLUMBING CODE (SPECIFIC HEIGHT REQUIREMENTS EXIST FOR BACKFLOW DEVICES WHICH DIFFER FROM THOSE SHOWN ON DRAWING)
- 13) ALL VALVES ON FIRE PROTECTION SYSTEMS MUST MEET CURRENT FIRE CODES AND REGULATIONS

RECOMMENDATIONS:

- 1) WATER METER TO BE INSTALLED IN CLOSE PROXIMITY TO A FLOOR DRAIN (150mm SANITARY FLOOR DRAIN
- 2) PROVIDING UNOBSTRUCTED SPACE OF 1000mm WIDE BY 1000mm DEEP BY 2000mm HIGH, CENTERED IN FRONT OF THE WATER METER, WILL BE DEEMED COMPLIANT WITH THE ACCESS REQUIREMENTS OF THE WATER BY-LAW

**PROPOSED ADDITION TO THE CITY OF WINNIPEG STANDARD CONSTRUCTION SPECIFICATIONS**



**THE CITY OF WINNIPEG**  
**WATER & WASTE DEPARTMENT**

INSTALLATION DETAILS FOR  
COMPOUND, TURBINE OR ELECTOMAGNETIC  
TYPE WATER METER IN BUILDINGS  
75mm - 250mm COMBINED OR DOMESTIC  
SERVICE PIPE
